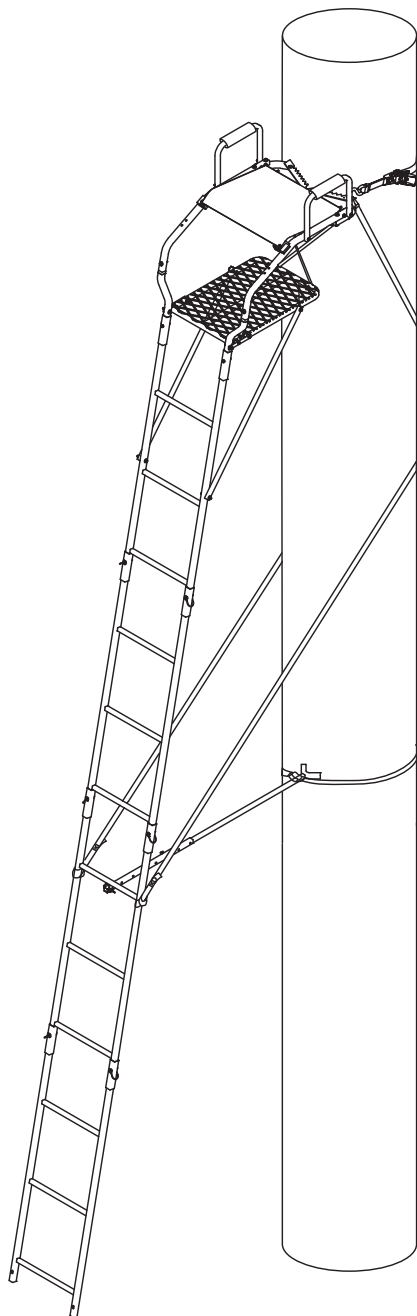




**WE ARE HUNTERS**



Operator's Manual

## **BOWMAN™** Ladder Stand

MODEL RE635

**Maximum Height**  
19' 9" to armrests

**Maximum Field Rating**  
300 lbs

**Tree Diameter Range**  
12" to 20"

**Wear Your Harness!**



PRODUCT MEETS  
INDUSTRY STANDARDS  
RECOGNIZED BY



PARTICIPATING MEMBER

Get parts online at  
**[www.HuntRiversEdge.com](http://www.HuntRiversEdge.com)**

© 2018 RETI  
All Rights Reserved

P/N: 15416  
REV7: 02/06/18

## INTRODUCTION

Rivers Edge® Treestands are engineered with you the hunter in mind. We appreciate your purchase of one of our world class treestands. Follow these few simple instructions and your stand will provide you many years of trouble-free pleasure. Instructions should be kept in a safe place and reviewed at least annually.

If for any reason you have a problem with your product, **DO NOT return to the retailer**, contact the Rivers Edge® customer service department at 800-450-EDGE (3343) for assistance.

## CONTENTS

Introduction/Warranty .....	2
Warnings.....	3-4
Inspection and Maintenance .....	4
Hardware Identification Chart.....	5
Tools Needed .....	5
Assembly Instructions .....	7-13
Warnings.....	14
Setup and Use Instructions.....	15-16
Finished Ladder.....	17
Illustrated Parts Breakdown.....	18-19

## WARRANTY

RETI offers a **one year warranty** for all components of the treestand. These warranties apply to the original owner with a proof of purchase. These warranties begin on the date of purchase by the first retail consumer and continue for the period specified above. These warranties apply to products that are not modified, abused or used in a manner that deviates from the product's intended usage. Minor fading in color is normal and is not covered by warranty. Any corrosion of painted surfaces that occurs as a result of paint being removed or damaged is also not covered by warranty. RETI offers no other warranty expressed or implied. Products for which warranty work has been approved must be sent directly to RETI and performed by RETI. **To obtain warranty service and/or replacement instructions, you must obtain prior approval from RETI before shipping your package to us by calling our customer service department at 800-450-3343 or by writing to: RETI, P.O. Box 755, 1160 Eighth Avenue, Cumberland, WI 54829 for a return material authorization number (RMA#).** All items must be shipped prepaid. RETI will, at no charge, repair or replace, in RETI's sole discretion, any product that satisfies the conditions stated above. RETI retains the right to change models, specifications and price without notice.

This equipment has been manufactured under strict quality and safety guidelines. As with any equipment of this type, full understanding of the instructions and its use is mandatory and imperative for the safety of its user. RETI is not responsible for any damages or injuries sustained due to improper use or modification of any of its products, or resulting from any use which deviates from the product's intended usage. RETI is not responsible for any injuries sustained due to failure to read and adhere to the instructions for use. Any misunderstanding or questions regarding the products of their use should be directed to RETI prior to any use. **All RETI treestands are sold with a full body harness ("Fall Arrest System") that meets standards set by the Treestand Manufacturer's Association ("TMA").** It is the owner's sole responsibility to inspect the product regularly for damage, improper installation, or conditions that could jeopardize the ultimate safety of the product. Failure to use or improper use of the provided Fall Arrest System may result in serious injury or death. **ALWAYS wear the provided Fall Arrest System while using this product. Owner is responsible to understand and follow product field weight rating and must never exceed maximum weight rating.** RETI is not responsible for any malfunction or injury resulting from normal wear and tear, damage caused by improper use, improper maintenance, negligence or accidents. This product, if used safely as intended, will provide trouble free service for the useful life of the product. We hope you will enjoy the quality of our products for years to come, and have a safe hunt.

**STOP**

## READ AND UNDERSTAND THE FOLLOWING WARNINGS BEFORE ASSEMBLY

### MODEL RE635

**MAXIMUM USE HEIGHT - 19' 9" TO ARMRESTS**

**MAXIMUM OCCUPANCY - ONE (1) PERSON**

**TOTAL WEIGHT LIMIT - 300 LB**

**TREE DIAMETER RANGE - 12" TO 20"**

### WARNING

- ⚠ This product carries strict height and weight restrictions. **Do Not** use this product if you exceed the total weight limit. Please note that the total weight limit includes the user(s) and their equipment.

### WARNING

- ⚠ **When hunting from a treestand falls can occur any time after leaving the ground causing injury or death.**
- ⚠ **Always** wear a Fall Arrest System (FAS) comprising a full body harness at all times after leaving the ground. You must stay connected at all times after leaving the ground while using climbing and hang-on treestands. Single safety belts and chest harnesses are no longer allowed and shall never be used. If you are not wearing a full body harness properly attached to the tree that is protecting you from a fall, do not leave the ground.
- ⚠ **Read and understand** all of the manufacturer's Warnings and Instructions and use all safety devices provided by the manufacturer. Contact the manufacturer for any questions. Failure to do so could result in injury or death.
- ⚠ **Never** exceed the total weight limit of the treestand.
- ⚠ **Never** use a treestand during inclement weather such as rain, lightning, windstorms or icy conditions and end your hunt and return to the ground if inclement conditions arise.
- ⚠ **Never** use a treestand while using drugs (even prescription drugs) or alcohol.
- ⚠ **Never** use a treestand while feeling ill, nauseous or dizzy, or if you have a prior medical condition that could cause a problem, that is, heart condition, joints that lock-up, spinal fusions, etc., or if you are not well rested. **Never** sleep in stand.
- ⚠ **Never** use a treestand on a dead, leaning, diseased or loose barked tree, or a utility pole. **Always** avoid electrical power lines.
- ⚠ **Never** rely on a tree branch for support.

### WARNING

- ⚠ **Never** jump or bounce on a treestand to seat it to the tree.
- ⚠ Pull up a bow, backpack, or firearm or other equipment only after being secure in the treestand and a firearm must be pulled up with it unloaded, chamber open, and muzzle down.
- ⚠ **Always** inform someone of the hunting location, where the treestand will be located and the expected duration of the hunt.
- ⚠ A signal device such as a mobile phone, radio, whistle, signal flare or personal locator device (PLD) must be on your person and readily available at all times.
- ⚠ Inspect the treestand and all safety devices each time before use and **Do Not** store a treestand outdoors when not in use.
- ⚠ **Never** modify your treestand in any way by making repairs, replacing parts, or altering it except if explicitly authorized in writing by the manufacturer.
- ⚠ Practice installing, adjusting and using your treestand at ground level prior to using it at elevated positions. Study your new stand to become familiar with all of its features and design. Doing so will confirm that the product is manufactured, assembled and installed correctly.
- ⚠ Instructions (written and video) shall be kept in a safe place and reviewed at least annually. It is the responsibility of the treestand owner to furnish the complete instructions to any person who borrows or purchases the treestand.
- ⚠ Use at least three (3) people to install or take down a ladder treestand.
- ⚠ The criss-cross straps/ropes and stabilization devices must be attached before climbing to the platform.
- ⚠ When installing a ladder stand, always bounce on the first rung to set the ladder into the ground according to manufacturer's instructions before proceeding to climb any higher.
- ⚠ Check every ladder section connection every time you use the stand before you leave the ground. If ladder sections are separating, do not use the stand.
- ⚠ Check the ground under the stand to make sure it is firm and level. Sloping ground or uneven surface (one side on a rock) can cause your ladder to tilt or shift off the tree as you climb.
- ⚠ **Always** maintain three (3) points of contact when climbing a ladder treestand. Proper three-point contact means having either two feet with one hand or one foot with two hands on the step portion of the ladder or climbing aid at all times.

## WARNING

- ▲ **Always** lean forward as you climb and attach your harness to the tree before securing the platform to the tree and stepping onto the platform.
- ▲ **Never** exceed the stated maximum use height.
- ▲ **Do Not** use this product until you have watched the included treestand safety DVD, understand it, and practiced the techniques for safe hunting discussed in this DVD.
- ▲ Read and perform all inspection and maintenance tasks before each and every use. Replace any questionable components immediately with RETI original replacement parts.
- ▲ **Do Not** crush tubing when tightening bolt assemblies! Identify and familiarize yourself with all parts before you start. Bolt identification chart can be found on the following page of the manual.
- ▲ Double check assembly steps to be certain you have correctly assembled this product.
- ▲ **Never** use any product that has not been maintained or inspected properly - Your life depends on it!
- ▲ Replace any and all treestand straps every two years or when any signs of damage or wear exist before.
- ▲ **Always** wear the appropriate footwear when using a ladder treestand. A good non-slip safety boot is important to your personal safety. Be especially careful that boot laces do not get hooked on the stand or any of its components (tuck shoelaces into boots before climbing).

## WARNING

- ▲ **Only** use approved RETI parts. Failure to do so may result in serious injury or death!

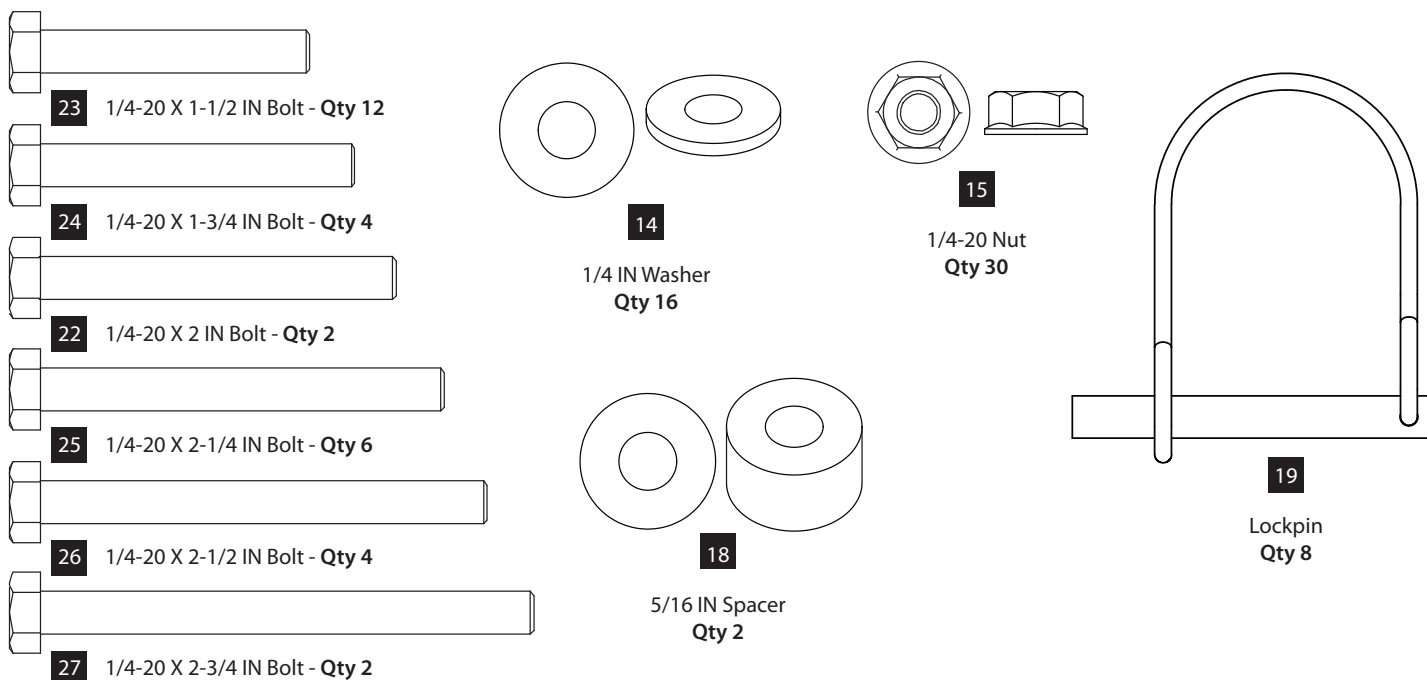
## INSPECTION AND MAINTENANCE

### BEFORE EACH USE PERFORM THE FOLLOWING:

- Inspect all webbing, rope, cord, and strap assemblies for wear or damage.
- Inspect cables and/or cable ends for damage or kinking.
- Inspect all hardware and chain components for damage or wear.
- Inspect for any structural damage to product. (If any exists stop use immediately and call RETI Customer Service.)
- Inspect all nut and bolt assemblies to be certain none are loose.
- Inspect for any missing parts.
- Lubricate all pivot and slide together points with powder graphite, petroleum jelly or silicone spray to prevent noise, wear and rust.
- Inspect entire product for any rust, corrosion, cracks, freezing, excessive heat or rotting damage that may effect the safety of your product. Discard any questionable product.
- Inspect entire product for any structural damage - pay close attention to all weld locations. (Discard product if any damage is found.)
- Using correct wrenches inspect all nut & bolt assembly locations and snug up any that may be loose. Be careful not to crush tubing when tightening!
- Inspect and check operation of all cables, cable ends, cord, rope, webbing, and strap or chain assemblies. Replace with RETI original replacement parts any item or assembly that shows signs of wear, damage, kinking, or functions incorrectly.
- Inspect seat for damage or wear. Replace any seat with factory new that shows signs of structural damage or wear.
- Never modify your stand in any way by making repairs, replacing parts, or altering by adding or attaching anything to it except if explicitly authorized in writing by the manufacturer.

## HARDWARE IDENTIFICATION CHART

Bolts shown are for size reference.  
Extra hardware may be included in the parts bag.



## TOOLS NEEDED





## ASSEMBLY INSTRUCTIONS

### IMPORTANT ASSEMBLY TIP:

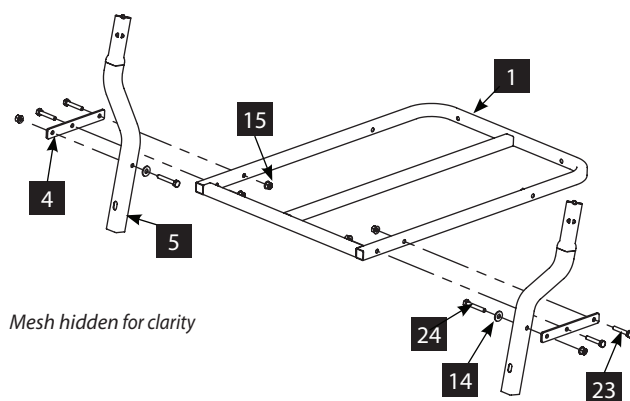
Do not tighten any nut and bolt combinations completely until all parts are assembled together! Finger tighten plus one turn of a wrench only! This will temporarily hold the lock-nut on the bolt while helping alignment of all parts! After all parts are assembled together, all nut and bolt combinations must be completely tightened.

**All assembly must be done in this order at ground level before uprighting.**

**Do not remove labels/warnings from product, they are there for your safety.**

**Recommended for adult use only.**

FIGURE 1



**NOTE: When selecting a tree to install the treestand in, never use a treestand on a dead, leaning, diseased or loose barked tree, or a utility pole. Always avoid electrical power lines.**

1. Attach the two flatbar tabs (4) to the platform (1) using four 1/4-20 X 1-1/2 IN bolts (23) and four 1/4-20 nuts (15). **SEE FIGURE 1.**

**NOTE: Do not tighten all nut and bolt assemblies completely!**

2. Attach the two flared rails (5) to the two flat bar tabs (4) using two 1/4-20 X 1-3/4 IN bolts (24), two washers (14) and two 1/4-20 nuts (15). **SEE FIGURE 1.**

3. Insert the crimped end of flared rails (5) into the side rails (7). Secure together using two 1/4-20 X 1-1/2 IN bolts (23), two washers (14) and two 1/4-20 nuts (15). **SEE FIGURE 2.**
4. Attach the tree blade (8) to the two side rails (7) using four 1/4-20 X 2-1/2 IN bolts (26), two washers (14), and two 1/4-20 nuts (15). **SEE FIGURE 2.**

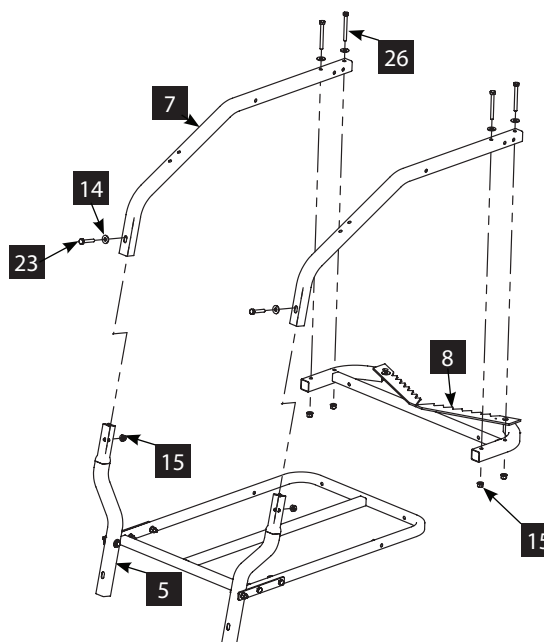
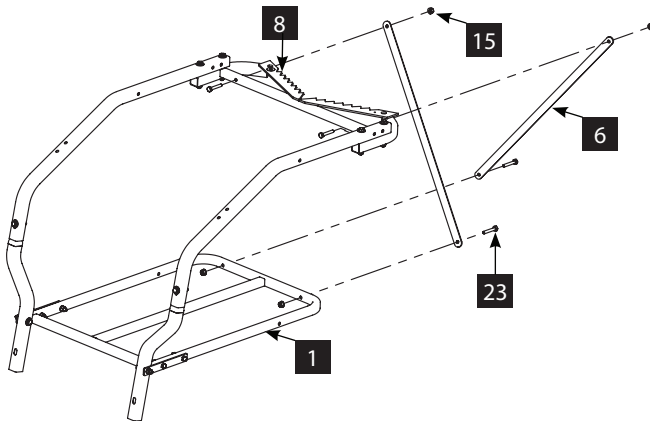


FIGURE 2

**FIGURE 3**



5. Attach the two flat bars (6) to the tree blade (8) and platform (1). Secure parts together using four 1/4-20 x 1-1/2 IN bolts (23) and 1/4-20 nuts (15). **SEE FIGURE 3.**

**NOTE:** The flat bars should cross each other during assembly forming an "X".



To view assembly video on the seat, visit [www.HuntRiversEdge.com](http://www.HuntRiversEdge.com)

6. Position the factory assembled mesh seat (10) upside down on a sturdy, hard surface. **SEE FIGURE 4A.**

7. Insert one 1/4-20 x 2-3/4 IN bolt (27) through the rear fixed brace (21) and side rail of mesh seat. Finger tighten with one 1/4-20 nut (15) (rear fixed brace nuts will need to be removed in order to attach finished seat to treestand later in assembly instructions). **SEE FIGURE 4B.**

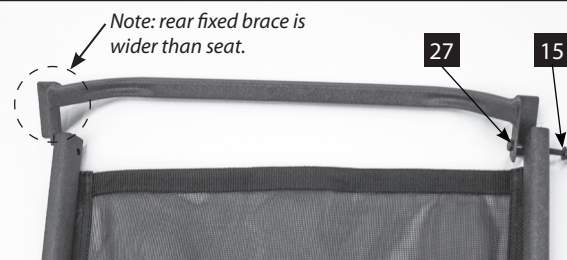
**NOTE:** The rear fixed brace is meant to be wider than the seat. The TearTuff material is extremely durable and is meant to stretch. **SEE FIGURE 4B.**

8. Angle the other side rail on seat assembly so it is outside of the rear fixed brace to align the bolt holes. **SEE FIGURE 4C.** Insert one 1/4-20 x 2-3/4 IN bolt (27) through the rear fixed brace and side rail (bolt will enter at an angle). **SEE FIGURE 4D.** Finger tighten with one 1/4-20 nut (15) to aid in further assembly. **SEE FIGURE 4E**

9. Rotate the rear fixed brace towards the seat to lock the brace in position. **SEE FIGURES 4F AND 4G.**



**FIGURE 4A**

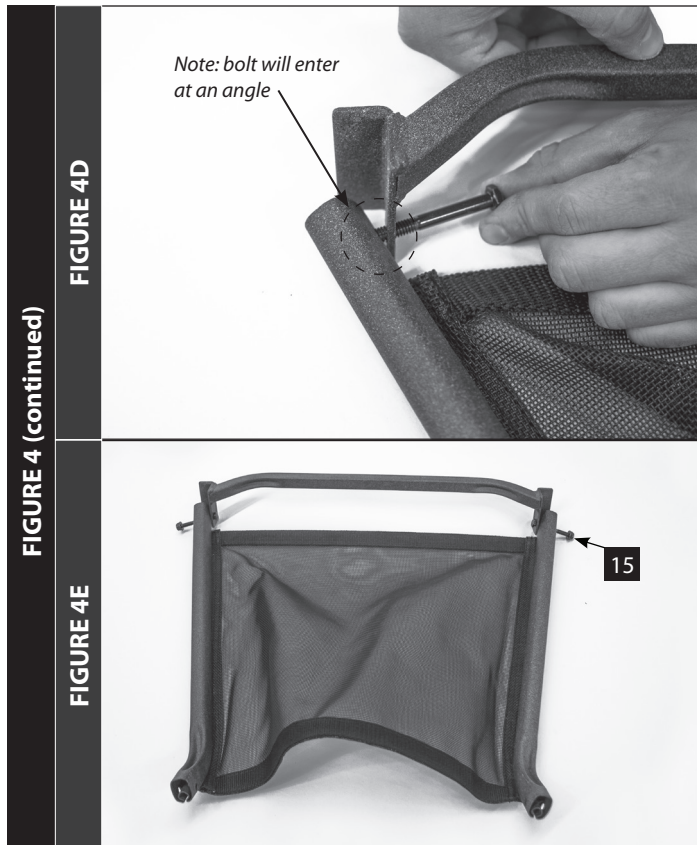


**FIGURE 4B**



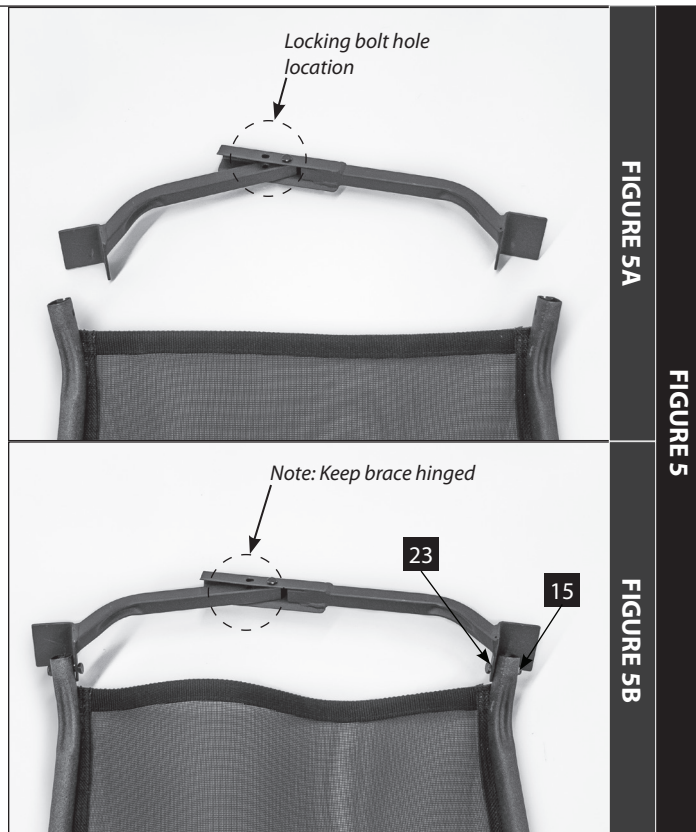
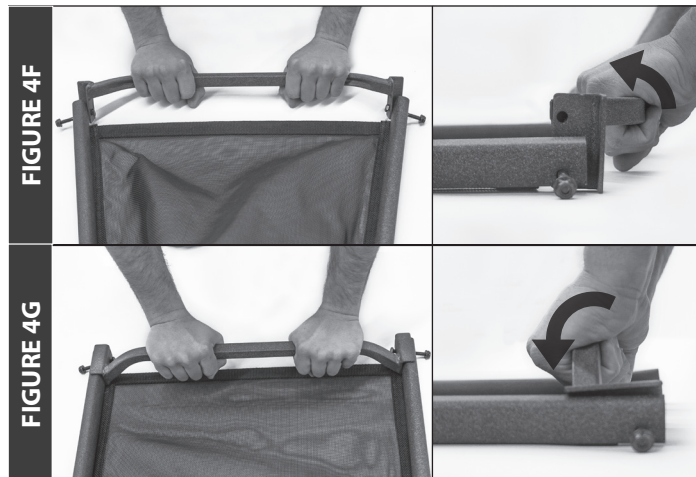
**FIGURE 4C**

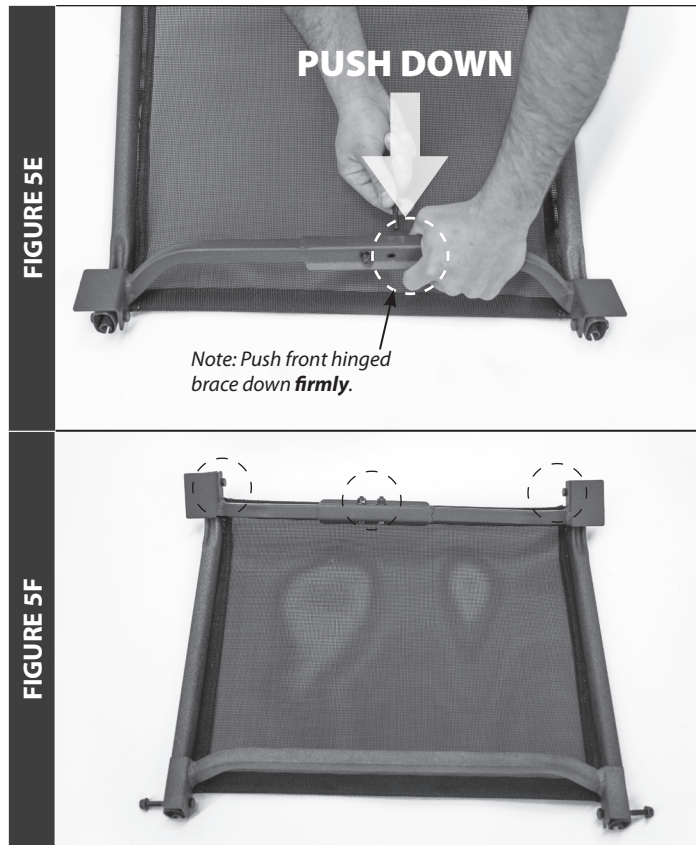
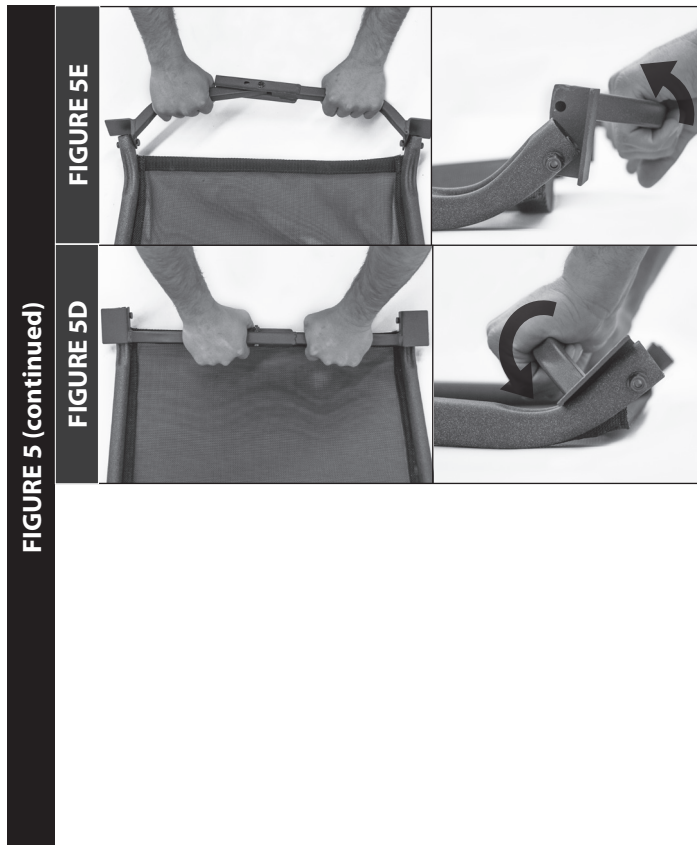




10. Remove the factory installed "locking" bolt and locknut from the front hinged brace (20), and set aside. Hinge the brace slightly to aid in assembly. **SEE FIGURE 5A.**
11. Insert (2) 1/4-20 x 1-1/2" bolts through the front hinged brace and each side rail, and finger tighten locknuts. **SEE FIGURE 5B.** Brace should remain hinged.
12. Rotate the front hinged brace towards the seat to lock the brace in position. **SEE FIGURES 5C AND 5D.**
13. Push down on the front hinged brace and install the previously removed bolt and locknut. **SEE FIGURE 5E.**
14. Tighten all (4) bolts and locknuts on the front hinged brace at this time. **SEE FIGURE 5F.** This will tighten up the side rails of the seat to the braces and square up the entire seat.

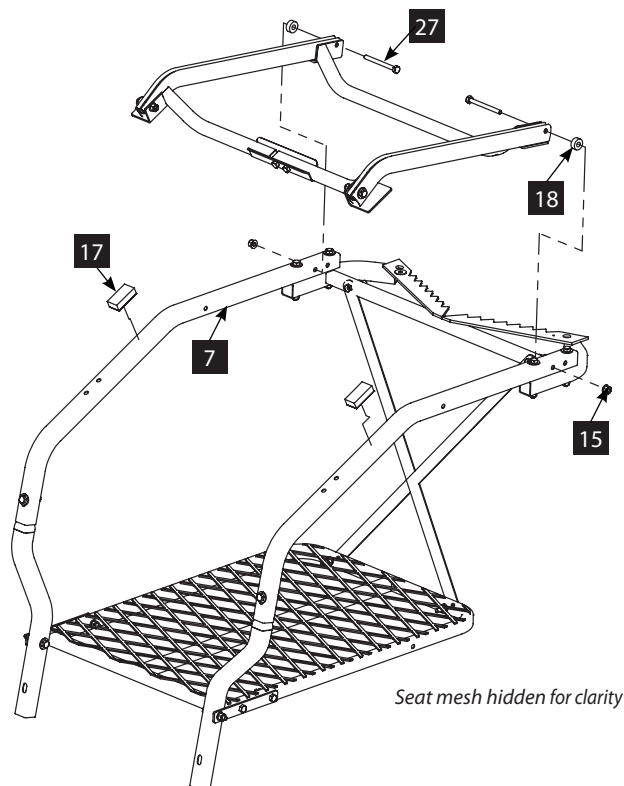
**NOTE: The rear fixed brace locknuts will need to be removed in order to attach finished seat and should not be tightened at this time.**



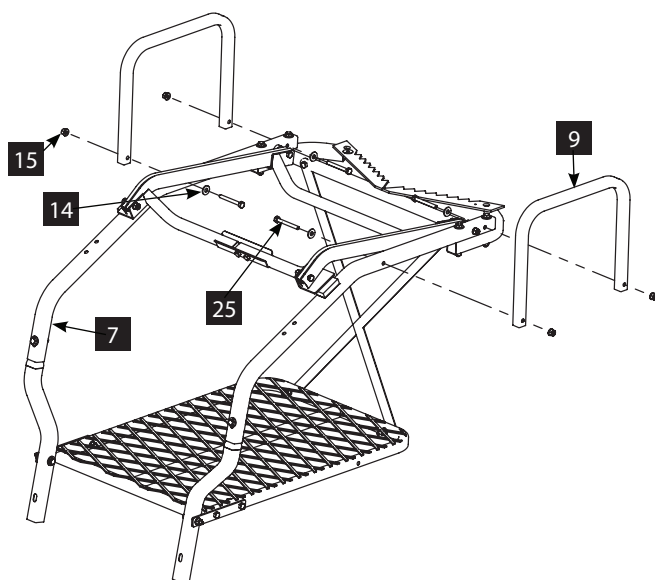


15. Attach seat assembly to the inside of the side rails (7) using two previously installed 1/4-20 X 2-3/4 IN bolts (27), two 5/16 IN spacers (18), and two 1/4-20 nuts (15). **SEE FIGURE 6.**
16. Attach the two bumper pads (17) to the top face of the side rails (7). **SEE FIGURE 6.**

**NOTE:** The pad bumpers should be placed so that the seat assembly rests on it during use.



**FIGURE 7**



*Seat mesh hidden for clarity*

17. Attach the two armrests (9) to the side rails (7) using four 1/4-20 X 2-1/4 IN bolts (25), two washers (14), and two 1/4-20 nuts (15).

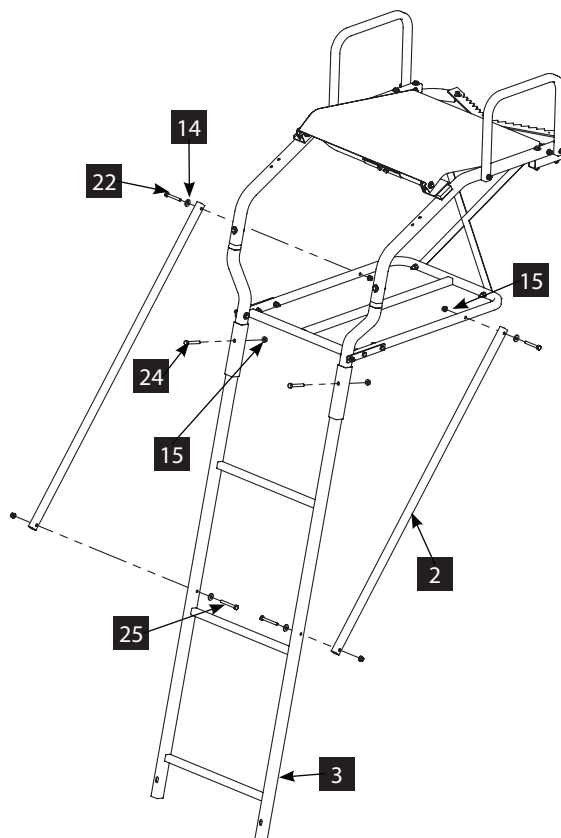
**SEE FIGURE 7.**

**NOTE: You must now tighten all nut and bolt assemblies. Be sure not to over tighten or crush tubing when tightening!**

18. Secure the top ladder section (3) to the assembled platform section with two 1/4-20 x 1-3/4 IN bolts (24) and 1/4-20 nuts (15).  
**SEE FIGURE 8.**

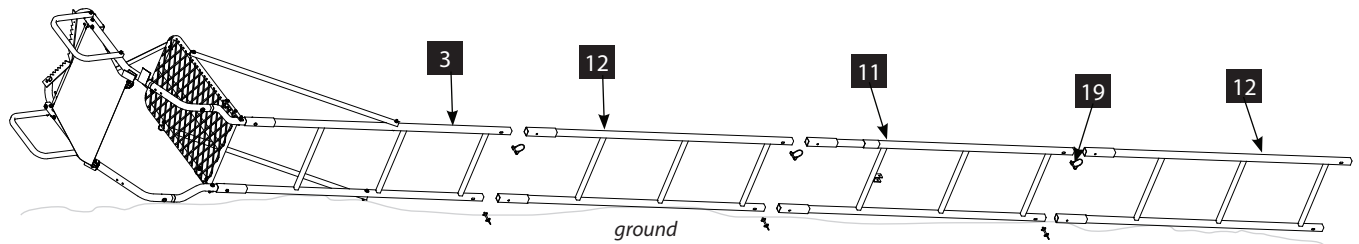
19. Attach two support braces (2) to the platform (1) and top ladder section (3) using two 1/4-20 x 2 IN bolts (22), two 1/4-20 x 2-1/4 IN bolts (25), four washers (14), and four 1/4-20 nuts (15).  
**SEE FIGURE 8.**

**NOTE: Tighten securely. Be sure not to overtighten or crush tubing when tightening!**



**FIGURE 8**

FIGURE 9



20. Sections are assembled on the ground in the following order: bottom ladder section (12), middle ladder section (11), bottom ladder section (12), top ladder section (3) and the top section (assembled top platform section). All parts must be connected with six lockpins (19) **SEE FIGURE 9.**

21. Attach the stabilizer bar extension tube (16) to the middle ladder section (11) through the mounting bracket with one lockpin (19). **SEE FIGURE 10.**
22. Slide the stabilizer bar (13) into the extension tube (16) and attach the two pieces together using one lockpin. The lockpin must go through both the extension tube (16) and stabilizer bar (13) at appropriate hole to achieve desired distance from tree. Adjustment in length may be needed when ladder is uprighted later in Setup and Use Instructions. **SEE FIGURE 10.**

**NOTE: Treestand should ALWAYS be fully assembled on the ground prior to mounting it in the tree.**

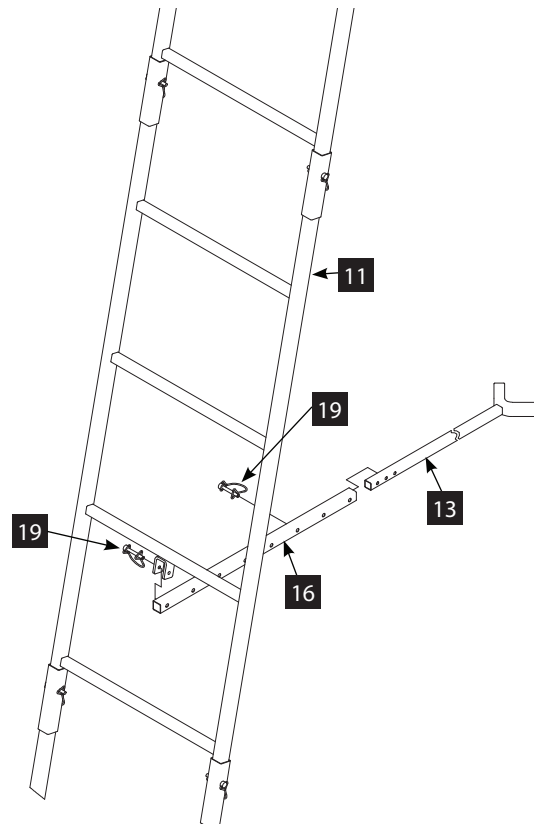
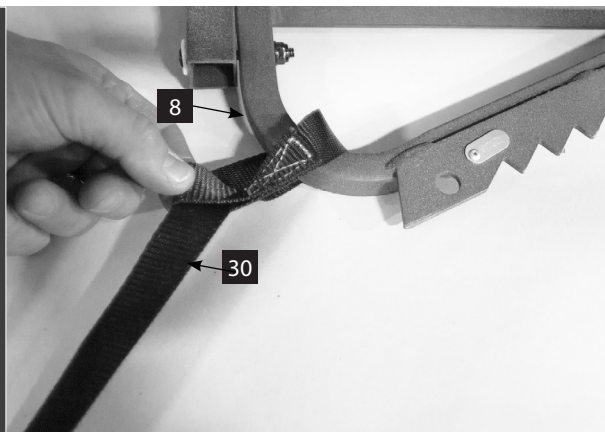


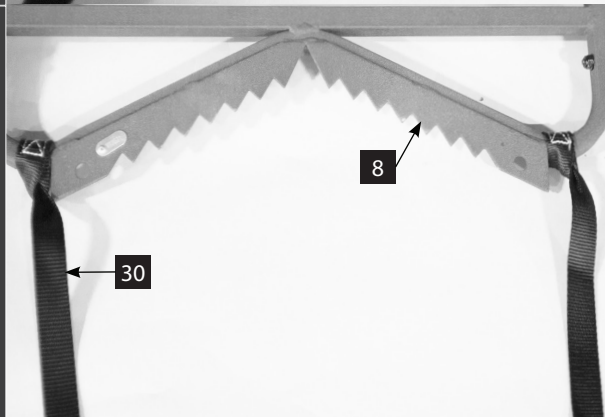
FIGURE 10

**FIGURE 11**

**FIGURE 11A**



**FIGURE 11B**



23. Attach the two provided 9 IN foam pads (32) to the armrests (9) by wrapping around tubing and attaching hook and loop together.
24. Attach the two long ends of the 16' criss-cross straps (30) to the tree blade (8). These long stabilizer straps should be attached by pulling the free end of the strap through the loop end of the strap to create a cinch knot around the frame tube. **SEE FIGURES 11A AND 11B.**



STOP

## READ AND UNDERSTAND THE FOLLOWING WARNINGS BEFORE SETUP AND USE

### WARNING

- ▲ Double check assembly steps to be certain you have correctly assembled this product.
- ▲ Study your new stand to become familiar with all of its features and design. At ground level, following provided use instructions, practice attaching stand to tree and removing stand from tree. Practice sitting, standing, and using this product before attaching overhead. Save these instructions for future reference. You must always use the provided Fall Arrest System (FAS) while using this product.
- ▲ **Always** use at least three (3) people to install or take down a ladder treestand. **Always** have two people stabilize the ladder before climbing to the platform the first time after every set-up.
- ▲ Be absolutely sure the tree blade(s) on stand and the stabilizer bar are contacting tree before climbing ladder.
- ▲ Stabilizer bar must always be correctly and securely attached to ladder and tree before climbing ladder.
- ▲ Make sure ladder bottom is firmly seated on dry, level ground. Attach your harness tether to the tree before securing the platform to the tree and stepping onto platform. Refer to the Full Body Harness instructions.
- ▲ **Never** ascend or descend ladder without criss-cross straps/ropes securely holding ladder to tree and stabilizer bar securely attached. Failure to correctly perform these steps can cause the ladder to collapse/buckle-over backwards during the initial ascent to attach ratchet strap resulting in serious injury or death.
- ▲ **Always** lean forward as you climb and attach your harness to the tree before securing the platform to the tree and stepping onto the platform.

### WARNING

- ▲ Bring ratchet strap(s) up with you in a pocket - **Do Not** carry in your hands!

### WARNING

- ▲ **Always** maintain three (3) points of contact when climbing a ladder treestand. Proper three-point contact means having either two feet with one hand or one foot with two hands on the step portion of the ladder or climbing aid at all times.
- ▲ **Always** wear the appropriate footwear when using a ladder treestand. A good non-slip safety boot is important to your personal safety. Be especially careful that boot laces do not get hooked on the stand or any of its components (tuck shoelaces into boots before climbing).
- ▲ **Never** stand on seat, it is designed for sitting only.
- ▲ **Do Not** allow excessive strap buildup in ratchet as this will prevent the ratchet teeth from engaging causing slippage.
- ▲ **Always** attach ratchet straps securely while using this product!
- ▲ If seat is removable, be certain it is securely attached when in use.
- ▲ Some models include a shooting rail. **Never** lean against, lean over, or sit on shooting rail. It is designed as a shooting rest only. **Always** be aware that the shooting rail can swing to one side or pivot up and down.
- ▲ Some models include a footrest, which is designed as a footrest only. **Never** stand on footrest! **Always** be fully aware of foot placement.
- ▲ Some models include a multi-piece stabilizer bar system. Be sure attachment hardware goes through both the extension tube and the stabilizer bar.

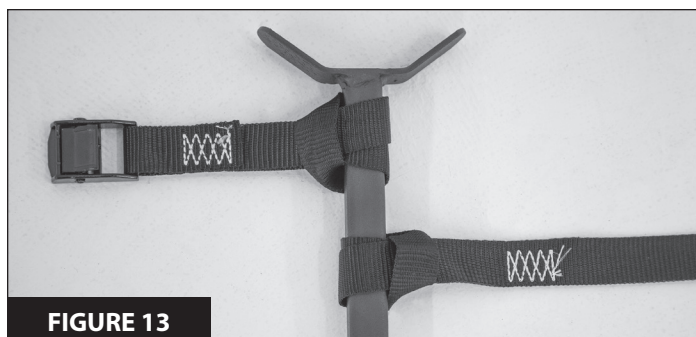
## SETUP AND USE INSTRUCTIONS

### ⚠ WARNING

- ⚠ **Never** use a treestand on a dead, leaning, diseased or loose barked tree, or a utility pole. **Always** avoid electrical power lines.
- ⚠ Bring ratchet strap(s) up with you in a pocket - **Do Not** carry in your hands!

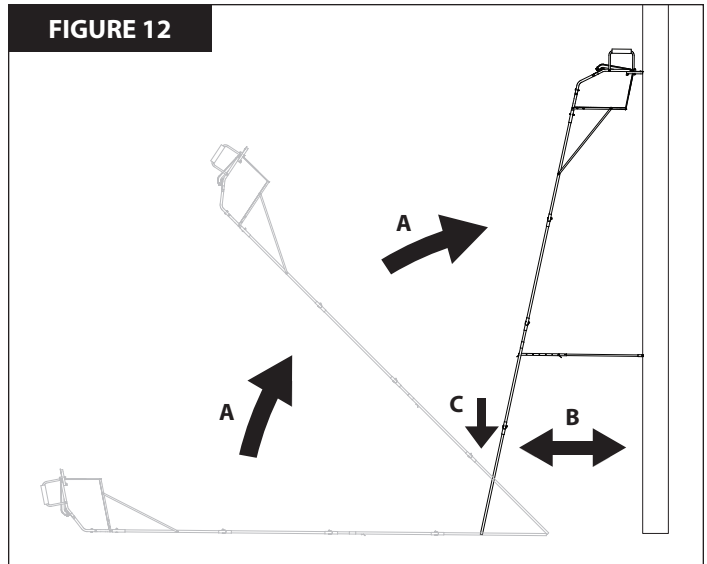
*During installation and removal of ladder treestands, you must always and properly use the included Full Body Harness (Fall Arrest System). Refer to the Full Body Harness instructions included with this product for proper use.*

1. Select a straight, healthy tree. Do Not attempt to install on a tree that is not healthy.
2. With assembled product lying on the ground, **position one person at bottom end of ladder lying on the ground**. This person has to prevent the ladder end from tilting up when platform end is lifted and prevent the ladder from skidding across ground.
3. a. Position two people at the platform end of the ladder, lift the platform end and continue uprighting by walking toward bottom end of ladder and moving hands along ladder legs. **Stand ladder up against chosen straight tree on dry, level ground**. Use caution when ladder comes over center against the tree. **SEE FIGURES 12A.**  
 b. Step back and look at the ladder top to see that it is level. Adjust as needed to achieve a level platform top. Make sure tree blade is contacting tree. **SEE FIGURES 12B.**  
 c. Step down hard on bottom step to push ladder legs into the ground. **SEE FIGURES 12C.**
4. While two people hold the stand in place, the third person should connect the horizontal stabilizer bar to the tree. Adjust the length of the stabilizer bar as need so it contacts the tree and is level to the ground. Then secure it to the tree with the 6' cam strap (31) by forming a cinch knot with both ends of the strap and running the long end of the strap through the cam buckle. **SEE FIGURES 13 and 14.**

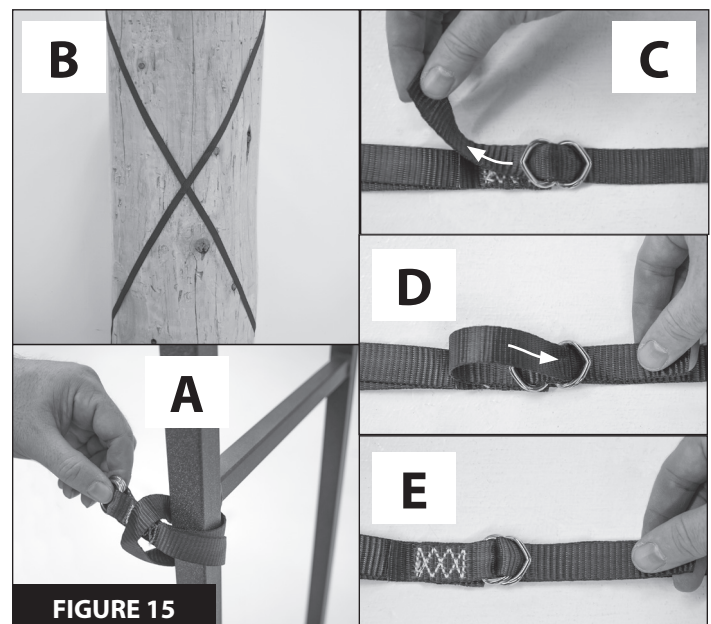


**FIGURE 13**

**FIGURE 12**



**FIGURE 14**



**FIGURE 15**

5. a. Loop the D-loop end of the two 16' criss cross straps (30) through the loop end to form a cinch knot around the ladder rail tube. Secure beneath a step rung, at the stabilizer bar height location. **SEE FIGURE 15A.**  
 b. With the stand level and being held in place by two people, the third person must cross one of the 16' criss cross straps (30) behind the tree and feed the free end through the opposite D-loop. **SEE FIGURE 15B-E.**  
 c. Criss cross the other 16' stabilizer strap (30), forming an "X" pattern on the of the tree and feed the free end through the opposite D-loop. **SEE FIGURE 15B-E.**
6. Make sure the criss cross straps and stabilizer bar strap are snug and the tree blade is still contacting the tree.

**NOTE: This ground level ladder-to-tree attachment will prevent the ladder from pulling away from the tree while ascending to the top for final 6' ratchet strap (28) attachment. The same holds true when the ladder is removed.**

7. **With two people securely holding the ladder,** use the three point contact climbing method to slowly climb the ladder and carefully keep a constant hand grip on the ladder at all times. Always lean forward, toward tree, to keep top section tree blades against the tree. **Be certain ladder bottom is firmly seated on dry, level ground. Attach your harness tether to the tree before securing the platform to the tree and stepping onto platform. Refer to the Full Body Harness instructions included with this product.**

**NOTE: Bring ratchet strap up with you in a pocket. DO NOT carry in your hand!**

8. a. Standing on ladder step, lean toward tree with ratchet strap now in hand, Hook "S" hook with long strap through hole provided on tree blade. Feed the long strap through the center (slot) of ratcheting mechanism and back around through tightening lever. **SEE FIGURES 16, 17A AND 17B.**

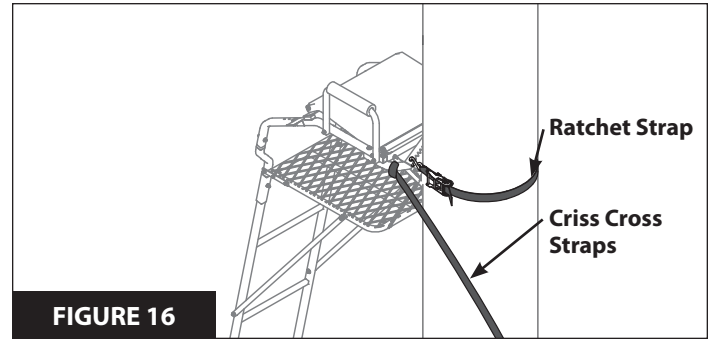
**NOTE: Be sure you feed the long strap correctly so there are no twists in the strap.**

b. Wrap entire ratchet assembly around tree and hook other "S" hook through opposite upper tree blade hole. Pull tail of long strap until most of the slack is taken out. Be sure entire strap is even and at the same level all around tree. "Ratchet" tight to tree, this will securely attach ladder to tree and prevent movement. **SEE FIGURES 17C.**

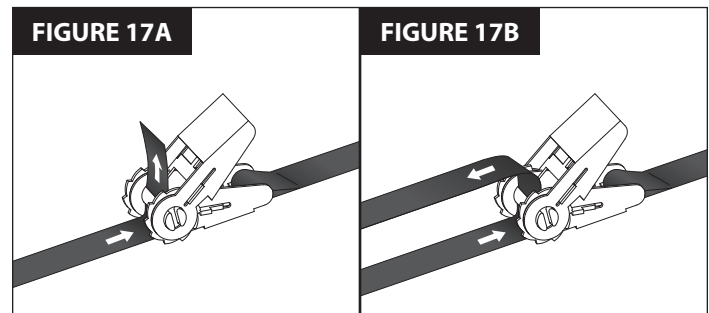
**NOTE: Make sure there is at least two full revolutions of strap on the ratchet spool before the strap tightens. Proper tension will ensure the stand is secured to the tree. Do not allow excessive strap to build up in the ratchet as this will prevent the ratchet teeth from engaging and can cause slippage.**

**To release ratchet, simply pull the release lever and open tightening lever wide open (flat). SEE FIGURE 17D.**

9. If necessary, re-check and adjust the 6' ratchet strap (28), 16' criss cross straps (30) and horizontal stabilizer bar assembly to securely attach the treestand to the tree. The tree blade must be touching the tree.
10. You are now ready to use your ladder stand.

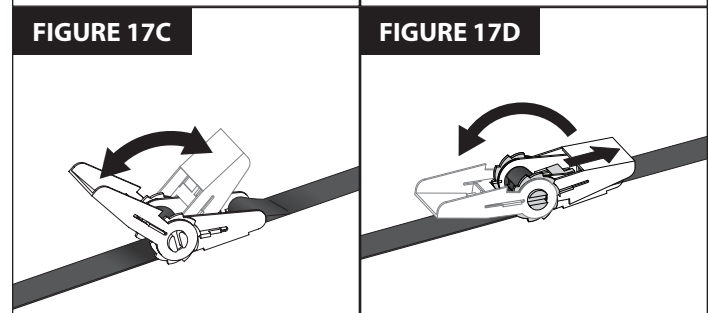


**FIGURE 16**



**FIGURE 17C**

**FIGURE 17D**

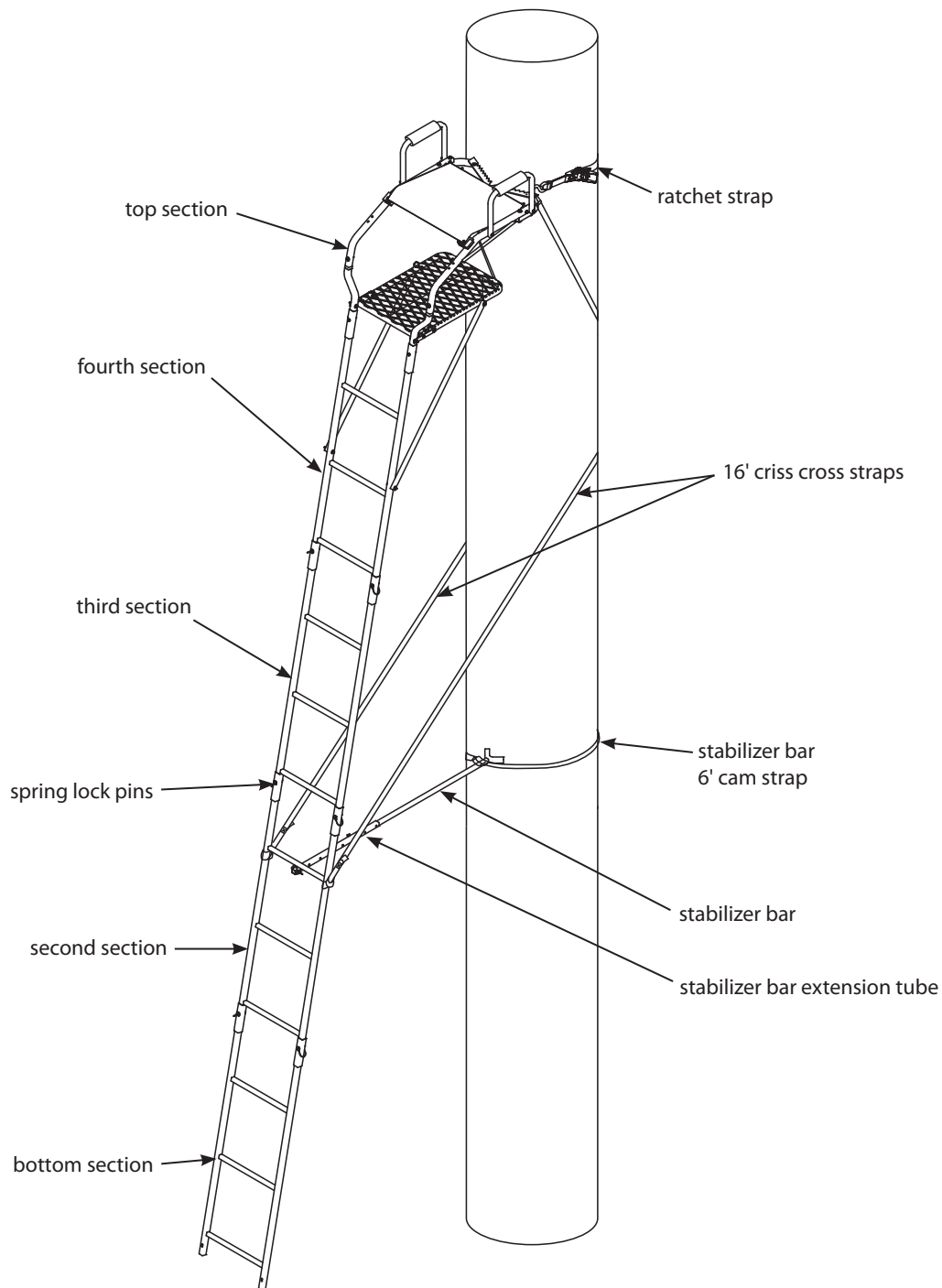


## IMPORTANT

- ⚠ Reverse the Set-Up and Use Instructions to take the ladder stand down.

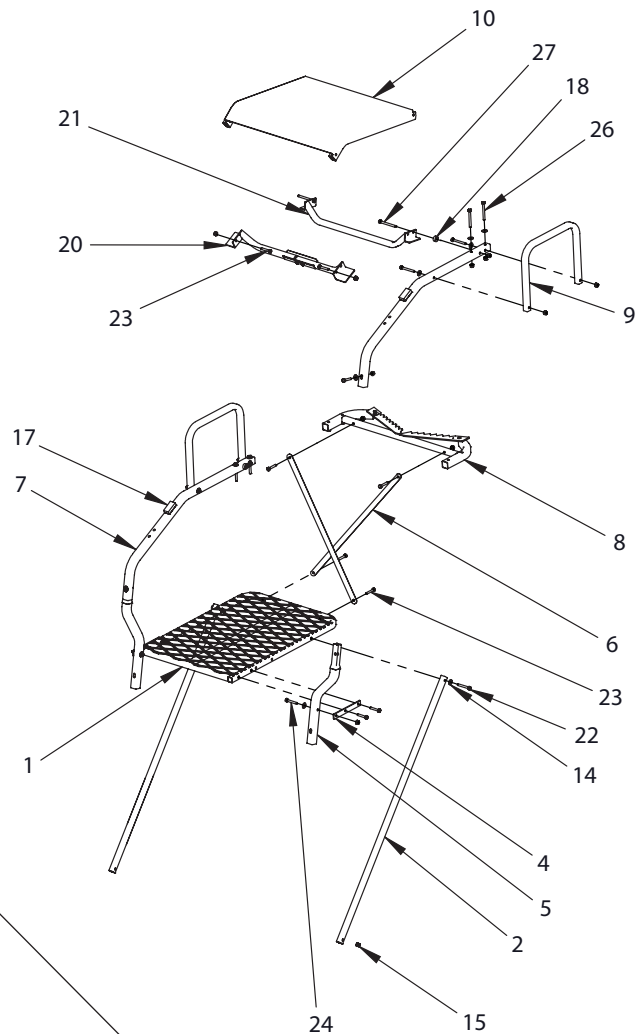


## FINISHED LADDER

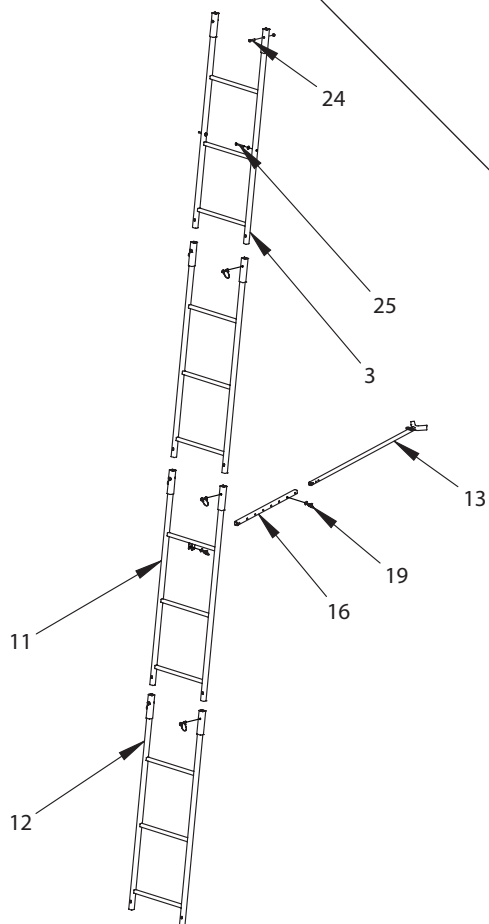


## ILLUSTRATED PARTS BREAKDOWN

### Platform Parts



### Ladder Parts



## PARTS LIST

ITEM #	PART #	DESCRIPTION	QTY.
1	15374	PLATFORM	1
2	15380	BRACE SUPPORT	2
3	15381	TOP LADDER SECTION	1
4	15383	FLATBAR TAB	2
5	15384	FLARED RAIL	2
6	15385	FLATBAR SUPPORT	2
7	15386	SIDE RAIL	2
8	15387	TREE BLADE	1
9	15398	ARMREST	2
10	15401	SEAT ASSEMBLY	1
11	15404	MIDDLE LADDER SECTION W/ STABILIZER SLOT	1
12	15406	BOTTOM LADDER SECTION	2
13	27397	STABILIZER BAR	1
14	48261B	WASHER 1/4 IN	16
15	48752B	NUT 1/4-20	30

**NO EXTENSIONS AVAILABLE FOR THIS MODEL.  
NEVER MODIFY OR EXCEED ORIGINAL STATED USE HEIGHT!**

ITEM #	PART #	DESCRIPTION	QTY.
16	1ML23	STABILIZER SUPPORT	1
17	48102	BUMPER PAD	2
18	48639	SPACER 5/16 IN	2
19	19847	LOCKPIN 1/4 X 1-3/4 IN	8
20	410112	SEAT SPACER FRONT	1
21	410122	SEAT SPACER REAR	1
22	48153B	BOLT 1/4-20 X 2 IN	2
23	48240B	BOLT 1/4-20 X 1-1/2 IN	12
24	48250B	BOLT 1/4-20 X 1-3/4 IN	4
25	48271B	BOLT 1/4-20 X 2-1/4 IN	6
26	48270B	BOLT 1/4-20 X 2-1/2 IN	4
27	67540B	BOLT 1/4-20 X 2-3/4 IN	2

### ITEMS BELOW ARE NOT SHOWN

28	48415	RATCHET STRAP	1
29	10531	FULL BODY HARNESS (FAS)	1
30	MK034-4511	CRISS CROSS STRAP 3/4 X 16 FT ASSEMBLY	2
31	MK021-1402	CAM STRAP W/LOOPS 1 IN X 6 FT ASSEMBLY	1
32	48736	SLEEVE WITH FOAM 9 IN	2
33	48800	DVD TREESTAND SAFETY	1



**WE ARE HUNTERS**

**Rivers Edge® Treestands, Inc.**

1160 Eighth Avenue, PO Box 755  
Cumberland, WI 54829

Phone: 800-450-EDGE (3343)

Fax: 715-822-2124

[www.HuntRiversEdge.com](http://www.HuntRiversEdge.com)

\*All weights, specifications and features are approximate and are subject to change without notice. Due to continuous product improvements, product images may not be exact. Warning labels in some product images may have been removed for photography purposes only. Props shown in photos not included. Some assembly may be required.