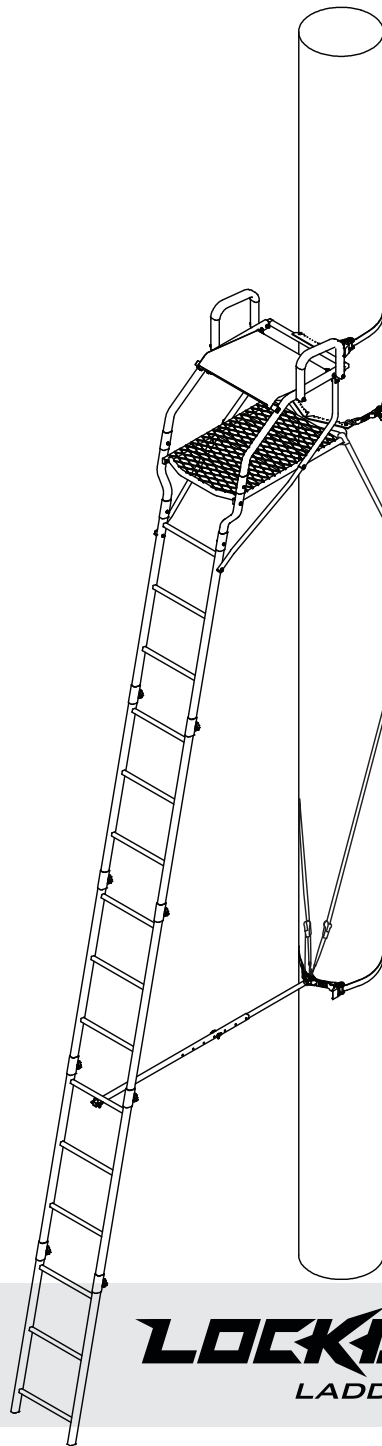




WE ARE HUNTERS



LOCKDOWN™
LADDER STANDS

PRODUCT MEETS
INDUSTRY STANDARDS
RECOGNIZED BY



PARTICIPATING MEMBER

Operator's Manual

LOCKDOWN™
BOW PRO
1-MAN
Ladder Stand

MODEL RE653

Maximum Height

19' 11" to seat

Maximum Field Rating

300 lbs

Tree Diameter Range

12" to 20"

Wear Your Harness!



Get parts online at
www.HuntRiversEdge.com

© 2018 RETI
All Rights Reserved

P/N: 29454
REV2: 2/20/18

INTRODUCTION

Rivers Edge® Treestands are engineered with you the hunter in mind. We appreciate your purchase of one of our world class treestands. Follow these few simple instructions and your stand will provide you many years of trouble-free pleasure. Instructions should be kept in a safe place and reviewed at least annually.

If for any reason you have a problem with your product or are missing any parts, **DO NOT return to the retailer**, contact Rivers Edge® Customer Service Department at 800-450-EDGE (3343) for assistance.

CONTENTS

Introduction/Warranty	2
Warnings.....	3-4
Inspection and Maintenance	4
Hardware Identification Chart.....	5
Assembly Instructions	7-11
Warnings.....	12
Setup and Use Instructions.....	13-14
Finished Ladder.....	15
Illustrated Parts Breakdown.....	16-17

WARRANTY

RETI offers a **one-year warranty** for all components of the treestand. These warranties apply to the original owner with a proof of purchase. These warranties begin on the date of purchase by the first retail consumer and continue for the period specified above. These warranties apply to products that are not modified, abused or used in a manner that deviates from the product's intended usage. Minor fading in color is normal and is not covered by warranty. Any corrosion of painted surfaces that occurs as a result of paint being removed or damaged is also not covered by warranty. RETI offers no other warranty expressed or implied. Products for which warranty work has been approved must be sent directly to RETI and performed by RETI. **To obtain warranty service and/or replacement instructions, you must obtain prior approval from RETI before shipping your package to us by calling our customer service department at 800-450-3343 or by writing to: RETI, P.O. Box 755, 1160 Eighth Avenue, Cumberland, WI 54829 for a return material authorization number (RMA#).** All items must be shipped prepaid. RETI will, at no charge, repair or replace, in RETI's sole discretion, any product that satisfies the conditions stated above. RETI retains the right to change models, specifications and price without notice.

This equipment has been manufactured under strict quality and safety guidelines. As with any equipment of this type, full understanding of the instructions and its use is mandatory and imperative for the safety of its user. RETI is not responsible for any damages or injuries sustained due to improper use or modification of any of its products, or resulting from any use which deviates from the product's intended usage. RETI is not responsible for any injuries sustained due to failure to read and adhere to the instructions for use. Any misunderstanding or questions regarding the products of their use should be directed to RETI prior to any use. **All RETI treestands are sold with a full body harness ("Fall Arrest System") that meets standards recognized by the Treestand Manufacturer's Association ("TMA").** It is the owner's sole responsibility to inspect the product regularly for damage, improper installation, or conditions that could jeopardize the ultimate safety of the product. Failure to use or improper use of the provided Fall Arrest System may result in serious injury or death. **ALWAYS wear the provided Fall Arrest System while using this product. Owner is responsible to understand and follow product field weight rating and must never exceed maximum weight rating.** RETI is not responsible for any malfunction or injury resulting from normal wear and tear, damage caused by improper use, improper maintenance, negligence or accidents. This product, if used safely as intended, will provide trouble free service for the useful life of the product. We hope you will enjoy the quality of our products for years to come, and have a safe hunt.

STOP

READ AND UNDERSTAND THE FOLLOWING WARNINGS BEFORE ASSEMBLY

MODEL RE653

MAXIMUM USE HEIGHT - 19' 11" TO SEAT
MAXIMUM OCCUPANCY - ONE (1) PERSON
TOTAL WEIGHT LIMIT - 300 LB
TREE DIAMETER RANGE - 12" TO 20"

WARNING

- ▲ This product carries strict height and weight restrictions. **Do Not** use this product if you exceed the total weight limit. Please note that the total weight limit includes the user(s) and their equipment.

WARNING

- ▲ **When hunting from a treestand falls can occur any time after leaving the ground causing injury or death.**
- ▲ **Always** wear a Fall Arrest System (FAS) comprising of a full body harness at all times after leaving the ground. You must stay connected at all times after leaving the ground while using climbing and hang-on treestands. Single safety belts and chest harnesses are no longer allowed and shall never be used. If you are not wearing a full body harness properly attached to the tree that is protecting you from a fall, do not leave the ground.
- ▲ **Read and understand** all of the manufacturer's Warnings and Instructions and use all safety devices provided by the manufacturer. Contact the manufacturer for any questions. Failure to do so could result in injury or death.
- ▲ **Never** exceed the total weight limit of the treestand.
- ▲ **Never** use a treestand during inclement weather such as rain, lightning, windstorms or icy conditions and end your hunt and return to the ground if inclement conditions arise.
- ▲ **Never** use a treestand while using drugs (even prescription drugs) or alcohol.
- ▲ **Never** use a treestand while feeling ill, nauseous or dizzy, or if you have a prior medical condition that could cause a problem, that is, heart condition, joints that lock-up, spinal fusions, etc., or if you are not well rested. **Never** sleep in stand.
- ▲ **Never** use a treestand on a dead, leaning, diseased or loose barked tree, or a utility pole. **Always** avoid electrical power lines.
- ▲ **Never** rely on a tree branch for support.
- ▲ **Never** jump or bounce on a treestand to seat it to the tree.

WARNING

- ▲ Pull up a bow, backpack, or firearm or other equipment only after being secure in the treestand and a firearm must be pulled up with it unloaded, chamber open, and muzzle down.
- ▲ **Always** inform someone of the hunting location, where the treestand will be located and the expected duration of the hunt.
- ▲ A signal device such as a mobile phone, radio, whistle, signal flare or personal locator device (PLD) must be on your person and readily available at all times.
- ▲ Inspect the treestand and all safety devices each time before use and **Do Not** store a treestand outdoors when not in use.
- ▲ **Never** modify your treestand in any way by making repairs, replacing parts, or altering it except if explicitly authorized in writing by the manufacturer.
- ▲ Practice installing, adjusting and using your treestand at ground level prior to using it at elevated positions. Study your new stand to become familiar with all of its features and design. Doing so will confirm that the product is manufactured, assembled and installed correctly.
- ▲ Instructions (written and video) shall be kept in a safe place and reviewed at least annually. It is the responsibility of the treestand owner to furnish the complete instructions to any person who borrows or purchases the treestand.
- ▲ Use at least three (3) people to install or take down a ladder treestand.
- ▲ The criss-cross straps/ropes and stabilization devices must be attached before climbing to the platform.
- ▲ When installing a ladder stand, always bounce on the first rung to set the ladder into the ground according to manufacturer's instructions before proceeding to climb any higher.
- ▲ Check every ladder section connection every time you use the stand before you leave the ground. If ladder sections are separating, do not use the stand.
- ▲ Check the ground under the stand to make sure it is firm and level. Sloping ground or uneven surface (one side on a rock) can cause your ladder to tilt or shift off the tree as you climb.
- ▲ **Always** maintain three (3) points of contact when climbing a ladder treestand. Proper three-point contact means having either two feet with one hand or one foot with two hands on the step portion of the ladder or climbing aid at all times.

⚠ WARNING

- ⚠ **Always** lean forward as you climb and attach your harness to the tree before securing the platform to the tree and stepping onto the platform.
- ⚠ **Never** exceed the stated maximum use height.
- ⚠ **Do Not** use this product until you have watched the included treestand safety DVD, understand it, and practiced the techniques for safe hunting discussed in this DVD.
- ⚠ Read and perform all inspection and maintenance tasks before each and every use. Replace any questionable components immediately with RETI original replacement parts.
- ⚠ **Do Not** crush tubing when tightening bolt assemblies! Identify and familiarize yourself with all parts before you start. Bolt identification chart can be found on the following page of the manual.
- ⚠ Double check assembly steps to be certain you have correctly assembled this product.
- ⚠ **Never** use any product that has not been maintained or inspected properly - Your life depends on it!
- ⚠ Replace any and all treestand straps every two years or when any signs of damage or wear exist before.
- ⚠ **Always** wear the appropriate footwear when using a ladder treestand. A good non-slip safety boot is important to your personal safety. Be especially careful that boot laces do not get hooked on the stand or any of its components (tuck shoelaces into boots before climbing).

⚠ WARNING

- ⚠ **Only** use approved RETI parts. Failure to do so may result in serious injury or death!

INSPECTION AND MAINTENANCE

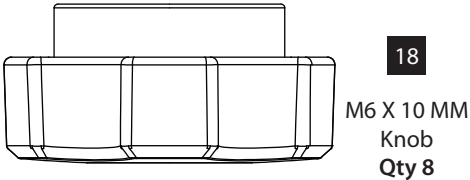
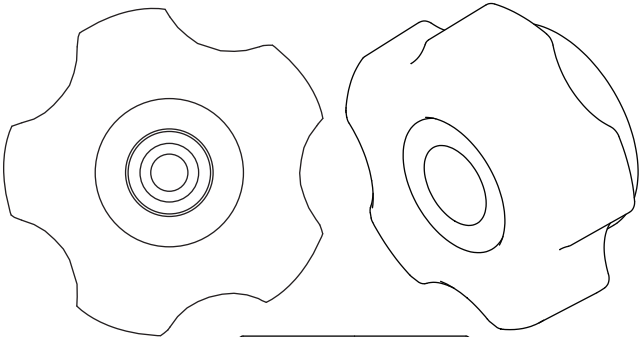
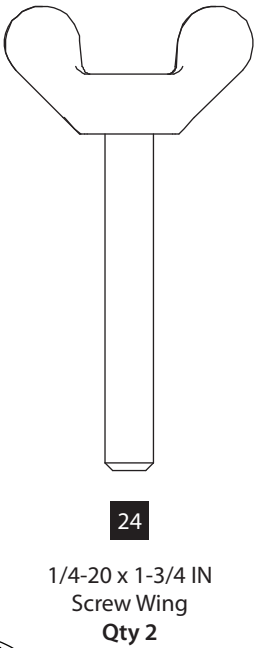
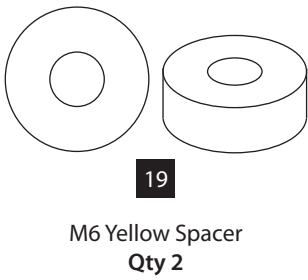
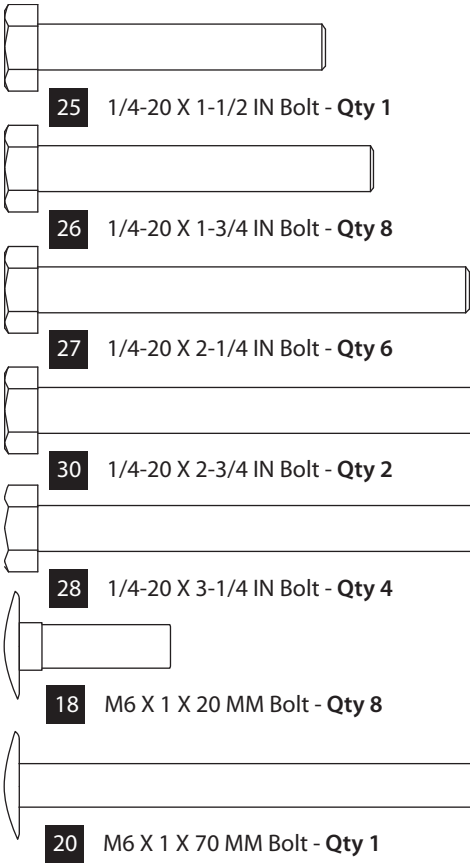
BEFORE EACH USE PERFORM THE FOLLOWING:

- Inspect all webbing, rope, cord, and strap assemblies for wear or damage.
- Inspect cables and/or cable ends for damage or kinking.
- Inspect all hardware and chain components for damage or wear.
- Inspect for any structural damage to product. (If any exists stop use immediately and call RETI Customer Service.)
- Inspect all nut and bolt assemblies to be certain none are loose.
- Inspect for any missing parts.
- Lubricate all pivot and slide together points with powder graphite, petroleum jelly or silicone spray to prevent noise, wear and rust.
- Inspect entire product for any rust, corrosion, cracks, freezing, excessive heat or rotting damage that may effect the safety of your product. Discard any questionable product.
- Inspect entire product for any structural damage - pay close attention to all weld locations. (Discard product if any damage is found.)
- Using correct wrenches inspect all nut & bolt assembly locations and snug up any that may be loose. Be careful not to crush tubing when tightening!
- Inspect and check operation of all cables, cable ends, cord, rope, webbing, and strap or chain assemblies. Replace with RETI original replacement parts any item or assembly that shows signs of wear, damage, kinking, or functions incorrectly.
- Inspect seat for damage or wear. Replace any seat with factory new that shows signs of structural damage or wear.
- Never modify your stand in any way by making repairs, replacing parts, or altering by adding or attaching anything to it except if explicitly authorized in writing by the manufacturer.

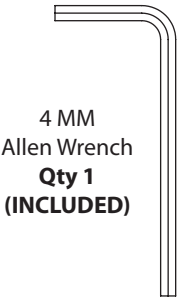
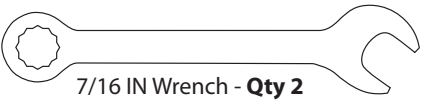
HARDWARE IDENTIFICATION CHART

Bolts shown are for size reference.
Extra hardware may be included in the parts bag.

Quick Tip: Cut page out to use as a reference tool while following assembly instructions



TOOLS FOR ASSEMBLY (NOT TO SCALE)



ASSEMBLY INSTRUCTIONS

IMPORTANT ASSEMBLY TIP:

Do not tighten any nut and bolt combinations completely until all parts are assembled together! Finger tighten plus one turn of a wrench only! This will temporarily hold the lock-nut on the bolt while helping alignment of all parts! After all parts are assembled together, all nut and bolt combinations must be completely tightened.

All assembly must be done in this order at ground level before uprighting.

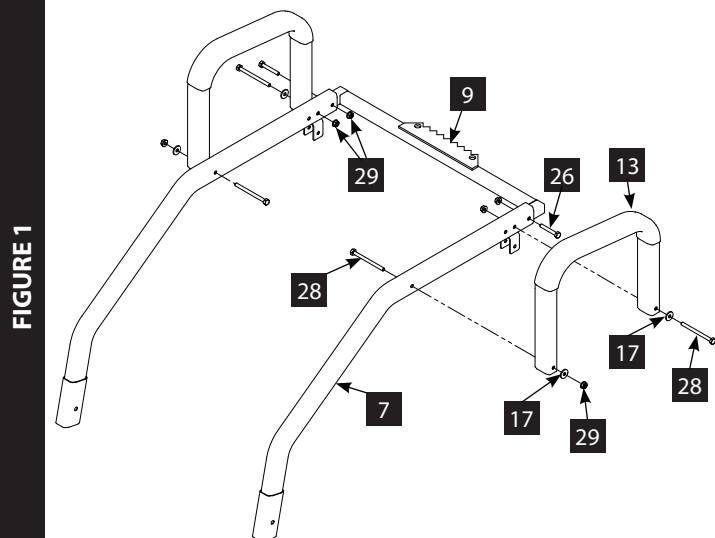
Do not remove labels/warnings from product, they are there for your safety.

Recommended for adult use only.

NOTE: When selecting a tree to install the treestand in, never use a treestand on a dead, leaning, diseased or loose barked tree, or a utility pole. Always avoid electrical power lines.

1. Take the two seat side rails (7), two armrests (13) and the top tree blade (9) and connect them together as shown in **FIGURE 1**. Locate the two 1/4-20 X 1-3/4 IN bolts (26) and two 1/4-20 nuts, these will be used in the holes closest to the tree blade, **SEE FIGURE 1**. Then use two 1/4-20 X 3-1/4 IN bolts (28), two yellow plastic washers (17) and two 1/4-20 nuts (29) to secure the rear of the armrests (13) to the seat side rails (7) and top tree blade (9) as shown in **FIGURE 1**.
2. Attach the front side of the armrests (13) to the seat side rails (7) with two 1/4-20 X 3-1/4 IN bolts (28), two yellow plastic washers (17) and two 1/4-20 nuts (29). **SEE FIGURE 1**.

NOTE: Be sure to install hardware in order and direction as shown in ensure proper fit and function.



3. Screw the M6 x 70 MM bolt (20) into the opposite end of the front seat tensioner (8) until snug. **SEE FIGURE 2A**
4. Slide the front seat tensioner (8) assembly from figure 2A through the open tube mount on the lower front edge of the seat assembly (14) such that the bolt end of the front seat tensioner bumps up against the closed end of the other tube mount. Make sure the bolt holes line up in the open tube mount. **SEE FIGURE 2**
5. Secure the front seat tensioner (8) to the open tube mount of the seat assembly (14) using a 1/4-20 x 1-1/2 IN bolt (25) and a 1/4-20 nut (29). Push a 22 MM square end plug (16) into the outside of the open tube mount. **SEE FIGURE 2**
6. Using the provided 4 MM allen wrench, rotate the M6 x 70 MM bolt (25) counter-clockwise, through the cap hole, to create tension in the TearTuff seat (14). Do not over tension the seat because it could cause the seat tensioner (8) to bow and the bolt (25) to strip. **SEE FIGURE 2**

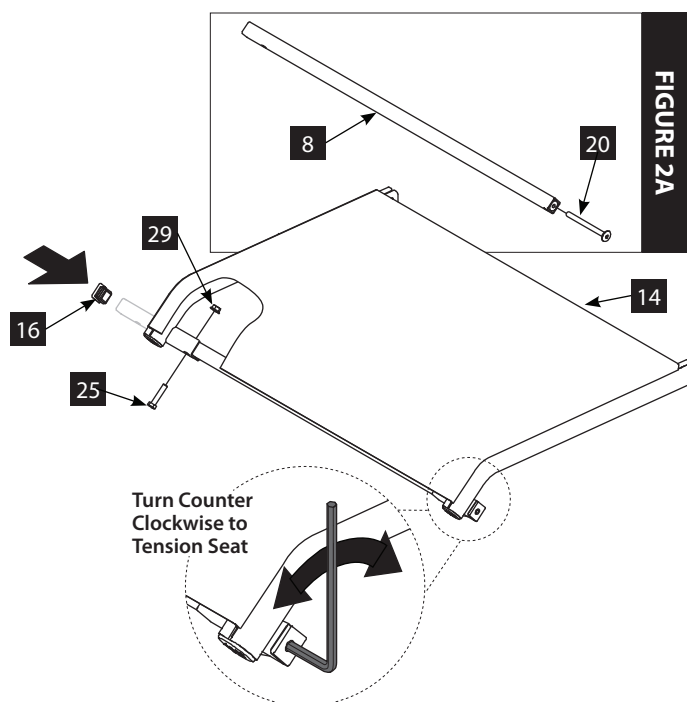
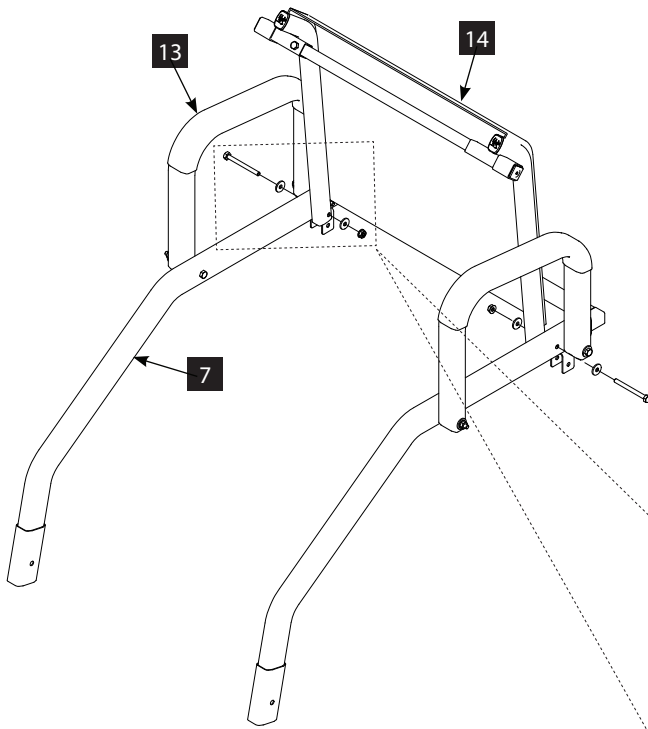


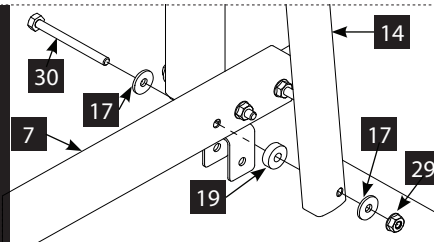
FIGURE 3



7. With the seat assembled, secure the rear of seat assembly (14) to each side seat supports (7) as shown in **FIGURE 3A**, using two $\frac{1}{4}$ -20 X 2-3/4 IN bolts (30), four yellow plastic washers (17), two plastic spacers (19) and two $\frac{1}{4}$ -20 nuts (29).

NOTE: The order of the hardware is imperative for proper assembly and function please reference **FIGURE 3B**, it shows detail of the left side of the seat assembly, and the correct hardware order.

FIGURE 3A



8. Take the two rear seat supports (12) and connect them to the brackets on side seat rails (7) using two $\frac{1}{4}$ -20 X 1-3/4 IN bolts (26) and two $\frac{1}{4}$ -20 nuts (29) as shown in **FIGURE 4**. Also attach the two flared platform rails (6) to the lower ends of each seat side rail (7), using two $\frac{1}{4}$ -20 X 1-3/4 IN bolts (26) and two $\frac{1}{4}$ -20 nuts (29) as shown in **FIGURE 4**.

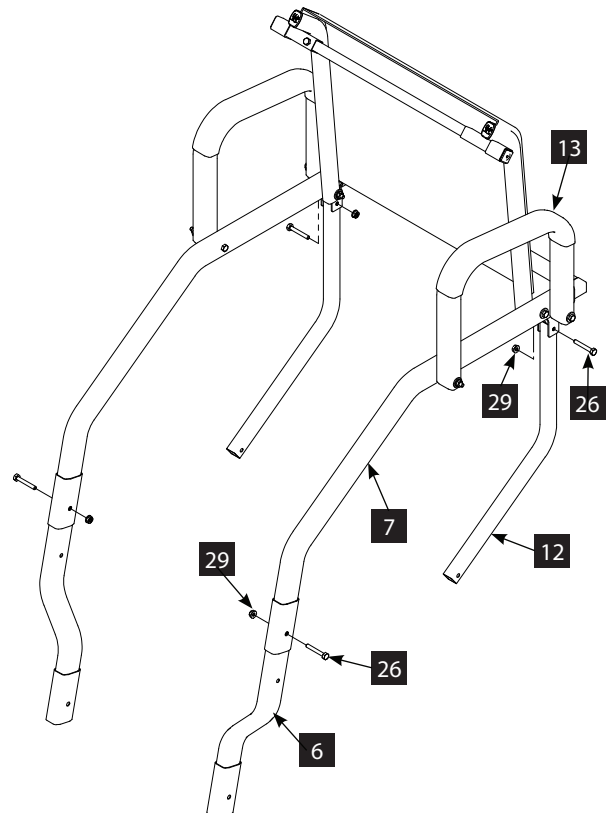
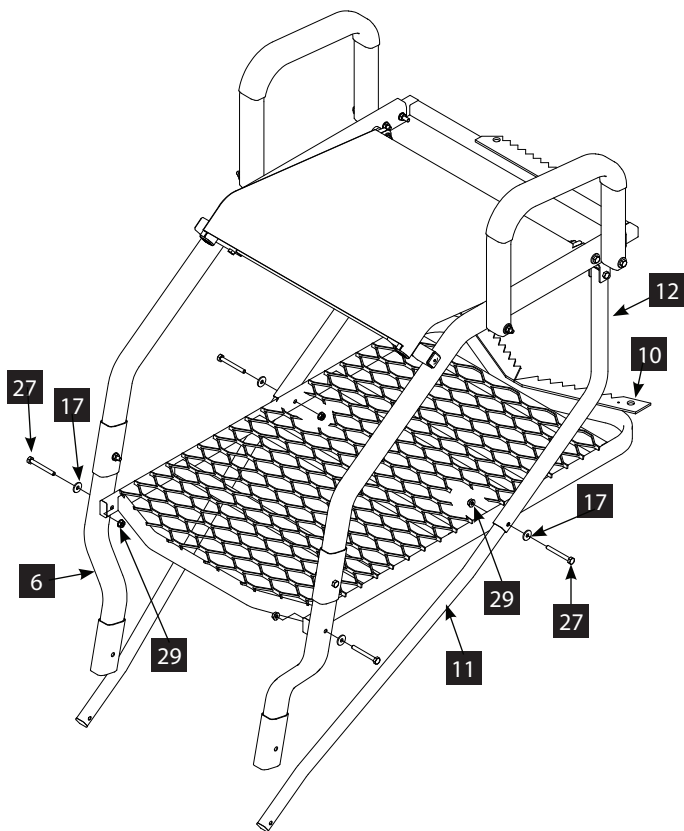


FIGURE 4

FIGURE 5


9. Take foot platform (10) and attach the front two corners of the platform to flared platform rails (6) as shown in **FIGURE 5**, using two 1/4-20 X 2-1/4 IN bolts (27), two yellow plastic washers (17) and two 1/4-20 nuts (29). Take loose ends of rear seat supports (12) and mate with end of platform braces (11), align holes in both, and attach to outer edge of foot platform (10). Secure with two 1/4-20 X 2-1/4 IN bolts (27), two yellow plastic washers (17) and two 1/4-20 nuts (29) as shown in **FIGURE 5**.

NOTE: After the assembly step has been completed, the 18 MM square end plugs (21) and 30 MM square end plugs (22) can be inserted into the end tubes of the foot platform (10) and the ends of the platform braces (11).

10. Take first ladder section (2) and connect to the flared platform rails (6) and secure with two 1/4-20 X 1-3/4 IN bolts (26) and two 1/4-20 nuts (29) as shown in **FIGURE 6**. Secure ends of platform braces (11) to the outer edge of first ladder section (2) with two 1/4-20 X 2-1/4 IN bolts (27), two yellow plastic washers (17) and two 1/4-20 nuts (29) as shown in **FIGURE 6**.

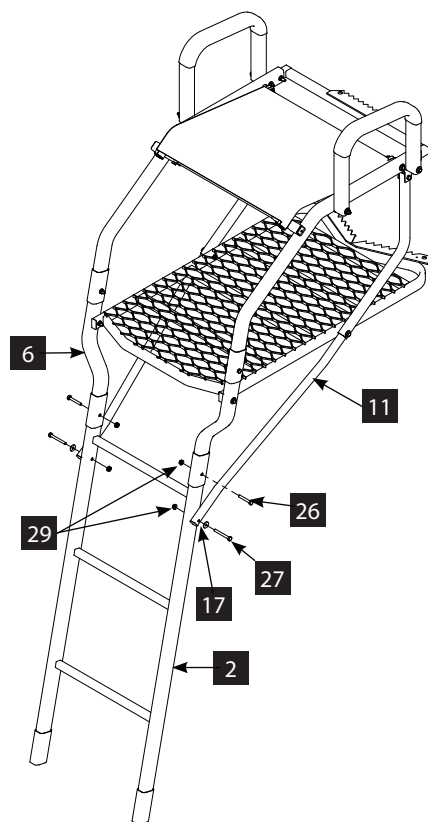
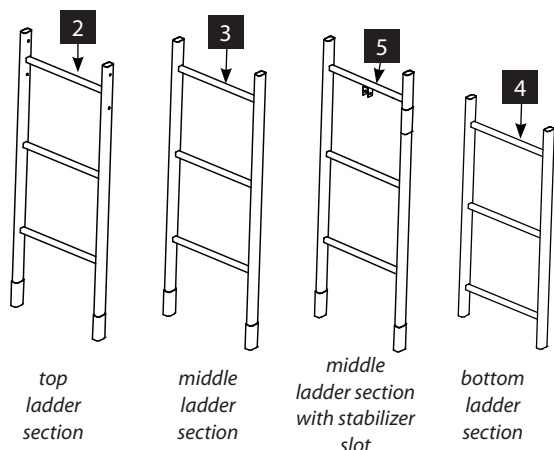
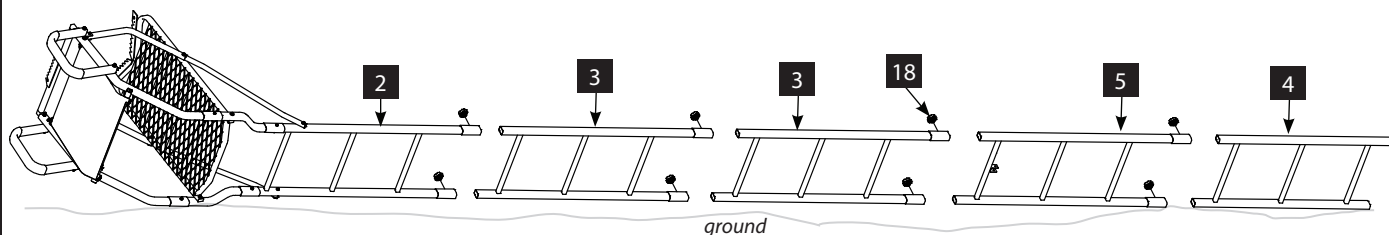

FIGURE 6

FIGURE 7A



11. Ladder sections are assembled on the ground in the following order: bottom ladder section (4), middle ladder section with stabilizer slot (5), two middle ladder sections (3), and the platform ladder section (2) with the treestand top assembly. Connect all sections together using the six silent knob assemblies (18). **SEE FIGURES 7 AND 7A**



12. Slide the stabilizer bar (1) into the stabilizer support tube (15) and secure using a 1/4-20 x 1-3/4 IN wing screw (24) and a wing nut (23). Make sure the screw passes through the support tube AND the stabilizer bar at the appropriate hole to achieve the desired distance from the tree. Adjustment in length may be needed when ladder is uprighted later in the Setup and Use Instructions.
13. Connect the stabilizer bar assembly (1) through the middle ladder section with stabilizer slot (5). These components will be connected using one 1/4-20 x 1-3/4 IN wing screw (24) and one wing nut (23). **SEE FIGURE 8**

NOTE: Treestand should ALWAYS be fully assembled on the ground prior to mounting it in the tree.

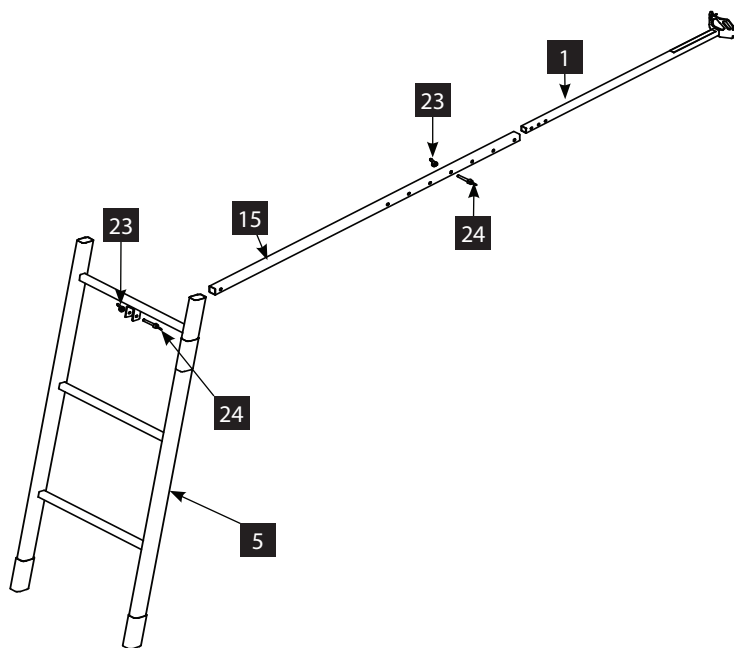
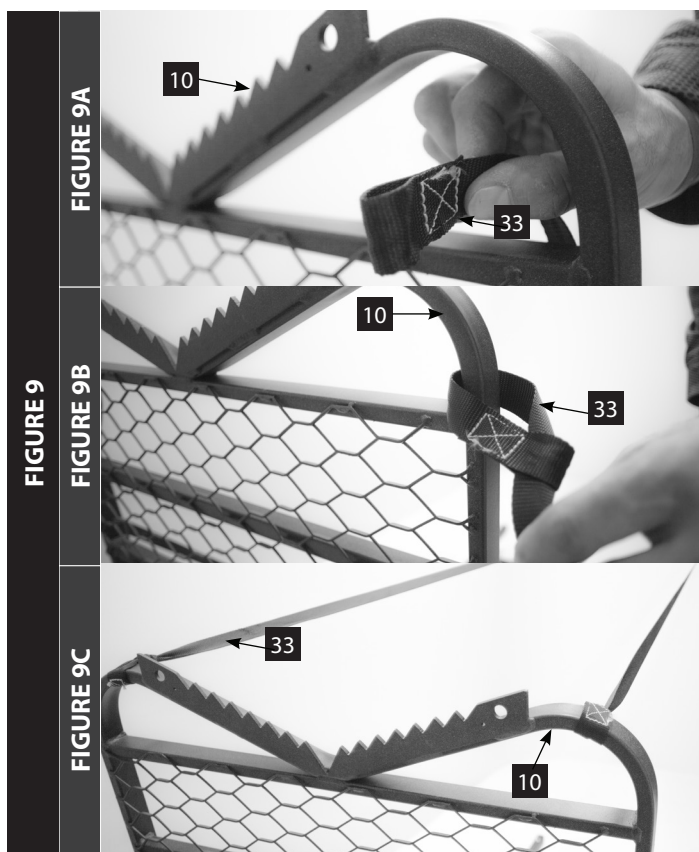


FIGURE 8



LONG CRISS-CROSS RATCHET STRAPS (33)

14. Attach the two long straps of the criss-cross ratchet straps (33) to the rear of the foot platform (10) near the lower tree blade.
 - a. Wrap sewn loop of each strap around each side of the platform and feed the loose end through the sewn loop. **SEE FIGURES 9A AND 9B**
 - b. Pull tight, forming a cinch knot. This permanently attaches the long straps to the platform. **SEE FIGURES 9B AND 9C**

NOTE: The ratchet portion of the long straps will be used later during Setup and Use Instructions.

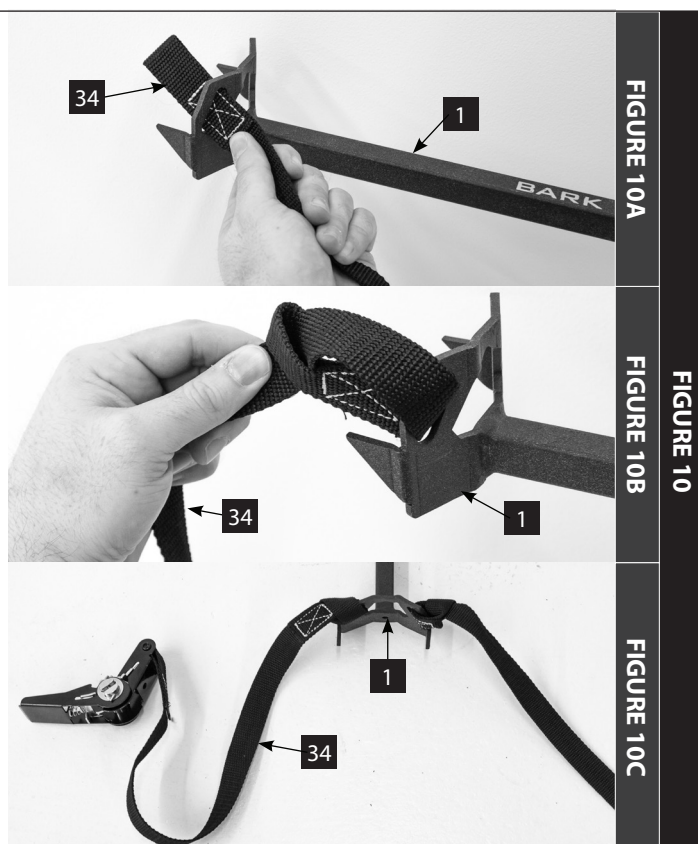
STABILIZER BAR RATCHET STRAP (34)

15. Attach the straps of the stabilizer bar ratchet assembly (34) to the stabilizer bar bark biting plate, which is part of the stabilizer bar (1).
 - a. Feed the sewn loop of the long strap through either side slot in the bark biting plate and then feed the loose end through the sewn loop. **SEE FIGURES 10A AND 10B**
 - b. Pull tight, forming a cinch knot. This permanently attaches the long strap to the stabilizer bar. **SEE FIGURES 10B AND 10C**
 - c. Feed the sewn loop of the ratchet buckle strap through the opposite side slot in the bark biting plate and then feed the ratchet buckle through the sewn loop.
 - d. Pull tight, forming a cinch knot. This permanently attaches the ratchet buckle strap to the stabilizer bar. **SEE FIGURE 10C.**

LARGE RATCHET STRAPS (32)

The large ratchet straps (32) that secure the platform and tree blades to the tree will be used later during the Setup and Use Instructions, after uprighting the stand.

NOTE: Make sure to bring ratchet straps up with you in a pocket. Never carry in your hands!



STOP

READ AND UNDERSTAND THE FOLLOWING WARNINGS BEFORE SETUP AND USE

WARNING

- ▲ Double check assembly steps to be certain you have correctly assembled this product.
- ▲ Study your new stand to become familiar with all of its features and design. At ground level, following provided use instructions, practice attaching stand to tree and removing stand from tree. Practice sitting, standing, and using this product before attaching overhead. Save these instructions for future reference. You must always use the provided Fall Arrest System (FAS) while using this product.
- ▲ **Always** use at least three (3) people to install or take down a ladder treestand. **Always** have two people stabilize the ladder before climbing to the platform the first time after every set-up.
- ▲ Be absolutely sure the tree blade(s) on stand and the stabilizer bar are contacting tree before climbing ladder.
- ▲ Stabilizer bar must always be correctly and securely attached to ladder and tree before climbing ladder.
- ▲ Make sure ladder bottom is firmly seated on dry, level ground. Attach your harness tether to the tree before securing the platform to the tree and stepping onto platform. Refer to the Full Body Harness instructions.
- ▲ **Never** ascend or descend ladder without criss-cross straps/ropes securely holding ladder to tree and stabilizer bar securely attached. Failure to correctly perform these steps can cause the ladder to collapse/buckle-over backwards during the initial ascent to attach ratchet strap resulting in serious injury or death.
- ▲ **Always** lean forward as you climb and attach your harness to the tree before securing the platform to the tree and stepping onto the platform.

WARNING

- ▲ Bring ratchet strap(s) up with you in a pocket - **Do Not** carry in your hands!

WARNING

- ▲ **Always** maintain three (3) points of contact when climbing a ladder treestand. Proper three-point contact means having either two feet with one hand or one foot with two hands on the step portion of the ladder or climbing aid at all times.
- ▲ **Always** wear the appropriate footwear when using a ladder treestand. A good non-slip safety boot is important to your personal safety. Be especially careful that boot laces do not get hooked on the stand or any of its components (tuck shoelaces into boots before climbing).
- ▲ **Never** stand on seat, it is designed for sitting only.
- ▲ **Do Not** allow excessive strap buildup in ratchet as this will prevent the ratchet teeth from engaging causing slippage.
- ▲ **Always** attach ratchet straps securely while using this product!
- ▲ If seat is removable, be certain it is securely attached when in use.
- ▲ Some models include a shooting rail. **Never** lean against, lean over, or sit on shooting rail. It is designed as a shooting rest only. **Always** be aware that the shooting rail can swing to one side or pivot up and down.
- ▲ Some models include a footrest, which is designed as a footrest only. **Never** stand on footrest! **Always** be fully aware of foot placement.
- ▲ Some models include a multi-piece stabilizer bar system. Be sure attachment hardware goes through both the extension tube and the stabilizer bar.

SET UP AND USE INSTRUCTIONS

During installation and removal of ladder treestands, you must always and properly use the included Full Body Harness (Fall Arrest System). Refer to the Full Body Harness instructions included with this product for proper use.

1. Select a straight, healthy tree. Do Not attempt to install on a tree that is not healthy.
2. Place the assembled product lying on the ground in front of the tree with the bottom ladder section approximately five feet away from the base of tree.
3. Position one person at bottom end of ladder. This person has to prevent the ladder end from tilting up and from skidding across the ground when platform end is lifted.
4. Position two people at the platform end of the ladder, lift the platform end and continue uprighting by walking toward bottom end of ladder while moving hands along ladder legs. **Stand ladder up against chosen tree on dry, level ground. Use caution when ladder comes over center against the tree. SEE FIGURE 11 (A)**
5. Once elevated completely, carefully slide the base so that the sitting and standing platforms are parallel to the ground. **SEE FIGURE 11 (B)**
6. Step back and look at the ladder top to see that both the lower platform tree blade and upper tree blade are contacting the tree. Adjust as needed so both of the tree blades are contacting tree.
7. Step down hard on bottom step to push ladder legs into the ground. **SEE FIGURE 11 (C)**
8. Adjust length of stabilizer bar assembly so the bark biting teeth of the stabilizer bar contact the tree. Stabilizer bar should be parallel to the ground. Do Not bow ladder in or out to achieve contact with the tree. Maintain tree blade contact.
9. With the stabilizer bar ratchet strap (34) now in hand, wrap the strap around the tree and feed the long strap through the center slot of ratcheting mechanism. Pull tail of long strap until most of the slack is taken out and ratchet tight so the teeth of the stabilizer bar dig into the tree. **SEE FIGURES 12A, 12B, 12C AND 13**

NOTE: Be sure to feed the long strap correctly so there are no twists in the strap.

WARNING

- ▲ **Never** use a treestand on a dead, leaning, diseased or loose barked tree, or a utility pole. **Always** avoid electrical power lines.
- ▲ Bring ratchet strap(s) up with you in a pocket - **Do Not** carry in your hands!

FIGURE 11

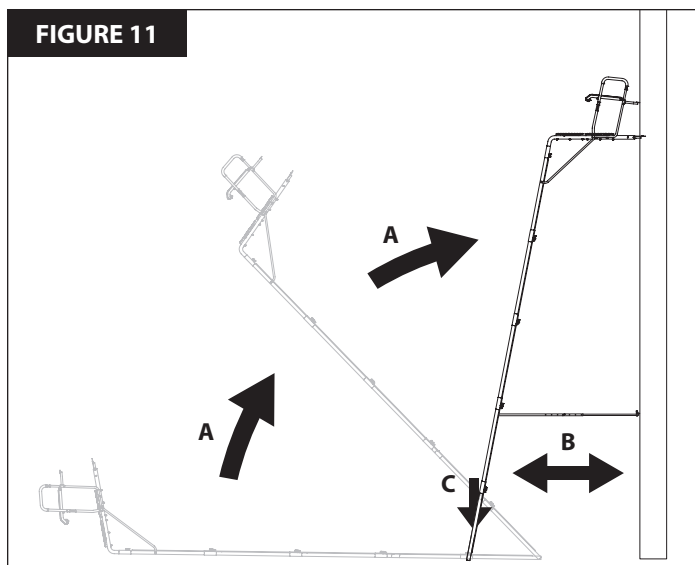


FIGURE 12A

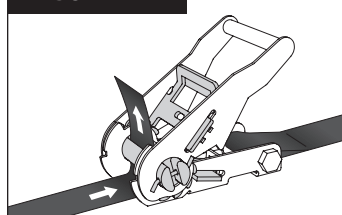


FIGURE 12B

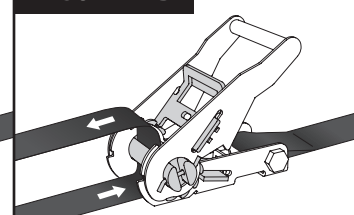


FIGURE 12C

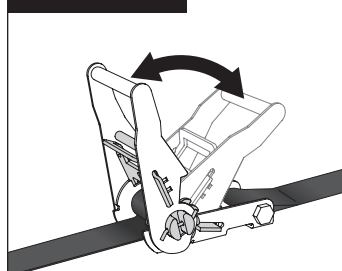


FIGURE 12D

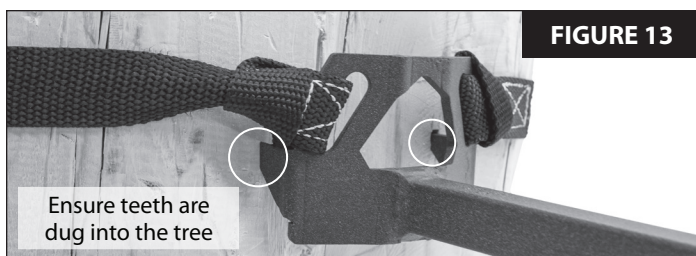
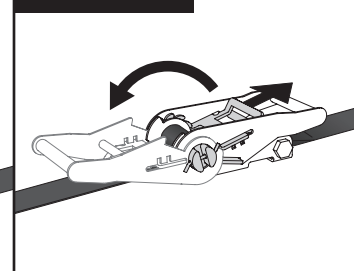


FIGURE 13

Ensure teeth are dug into the tree

10. Locate the two ratchet portions with S-hooks for the criss-cross straps (33).
 - a. With one ratchet portion of the criss-cross strap (33) now in hand, feed one long strap hanging down from platform through the center slot of ratcheting mechanism and back around through tightening lever. **SEE FIGURES 12A AND 12B**
 - b. While maintaining contact between long criss-cross strap and the tree surface, wrap entire ratchet strap assembly around back side of tree and hook S-hook to the middle opening of stabilizer bar bark biting plate. **SEE FIGURE 14A**
 - c. Pull the tail of the long strap until most of the slack is taken out. Be sure entire strap is evenly wrapped around tree and ratchet tight to tree. This will securely attach the first of two long ratchet straps to tree. **SEE FIGURES 12B AND 12C**
 - d. Repeat for attachment of the second criss-cross strap. **SEE FIGURES 14B AND 15**

NOTE: It is extremely critical that the criss-cross ratchet straps are attached to the stabilizer bar bark biting plate in opposite directions of each other forming a "criss-cross" behind the tree. This ground level ladder-to-tree attachment will prevent the ladder from pulling away from the tree while ascending to the top for final ratchet strap attachment. The same holds true when ladder removal is necessary. SEE FIGURE 15

LARGE RATCHET STRAPS (32)

10. With two people securely holding the base of the ladder, use the three point contact climbing method to slowly climb the ladder and carefully keep a constant hand grip on the ladder at all times. Always lean forward, towards the tree, to keep tree blades against the tree. **Be certain ladder bottom is firmly seated on dry, level ground. Attach your harness tether to the tree before securing the platform to the tree and stepping onto platform. Refer to the Full Body Harness instructions included with this product.**

NOTE: Bring large ratchet straps up with you in a pocket. DO NOT carry in your hands!

11. Once platform is reached, hook S-hook with long strap through hole provided in upper tree blade frame. Feed the long strap through the center slot of ratcheting mechanism and back around through tightening lever. **SEE FIGURES 12A, 12B AND 16**
12. Wrap the ratchet assembly around the tree and hook other S-hook through opposite tree blade hole. Pull tail of long strap until most of the slack is taken out. Be sure entire strap is even and at the same level all around tree. "Ratchet" tight to tree. This will securely attach only the seat portion to the tree and prevent movement. **SEE FIGURES 12C AND 16**

NOTE: To release ratchet, simply pull the release lever and open tightening lever wide open (flat). SEE FIGURE 12D

13. Repeat previous two steps for the platform tree blade attachment. Place S-hook through holes provided on bottom tree blade.
14. You are now ready to use your ladder stand!



FIGURE 14A

FIGURE 14B

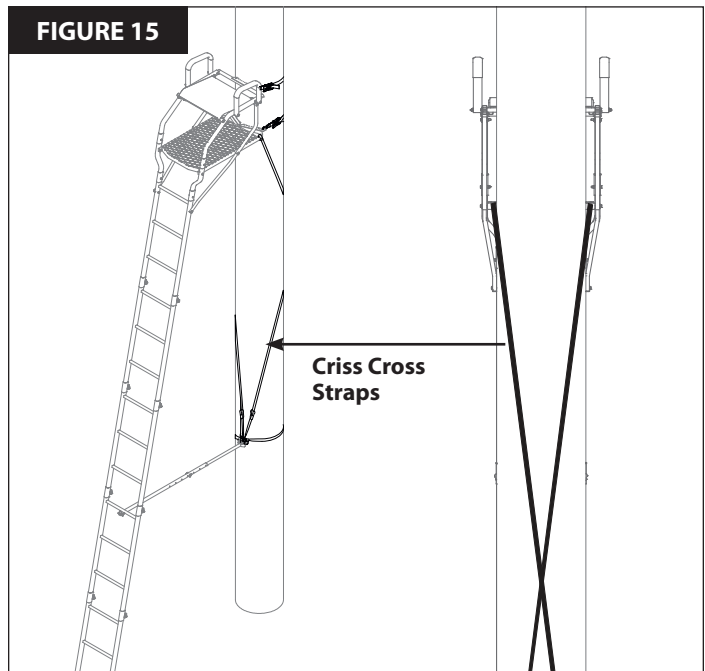


FIGURE 15

Criss Cross Straps

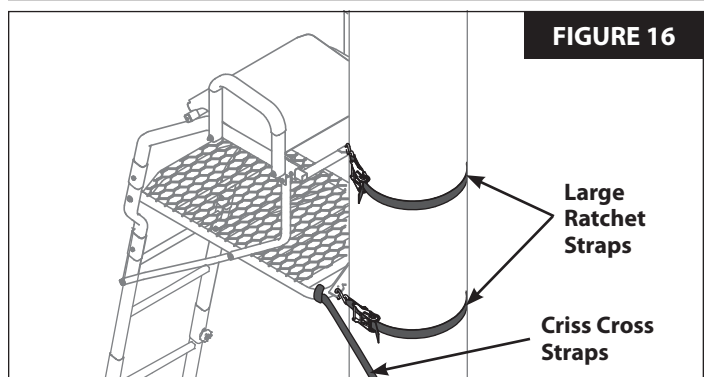


FIGURE 16

Large Ratchet Straps

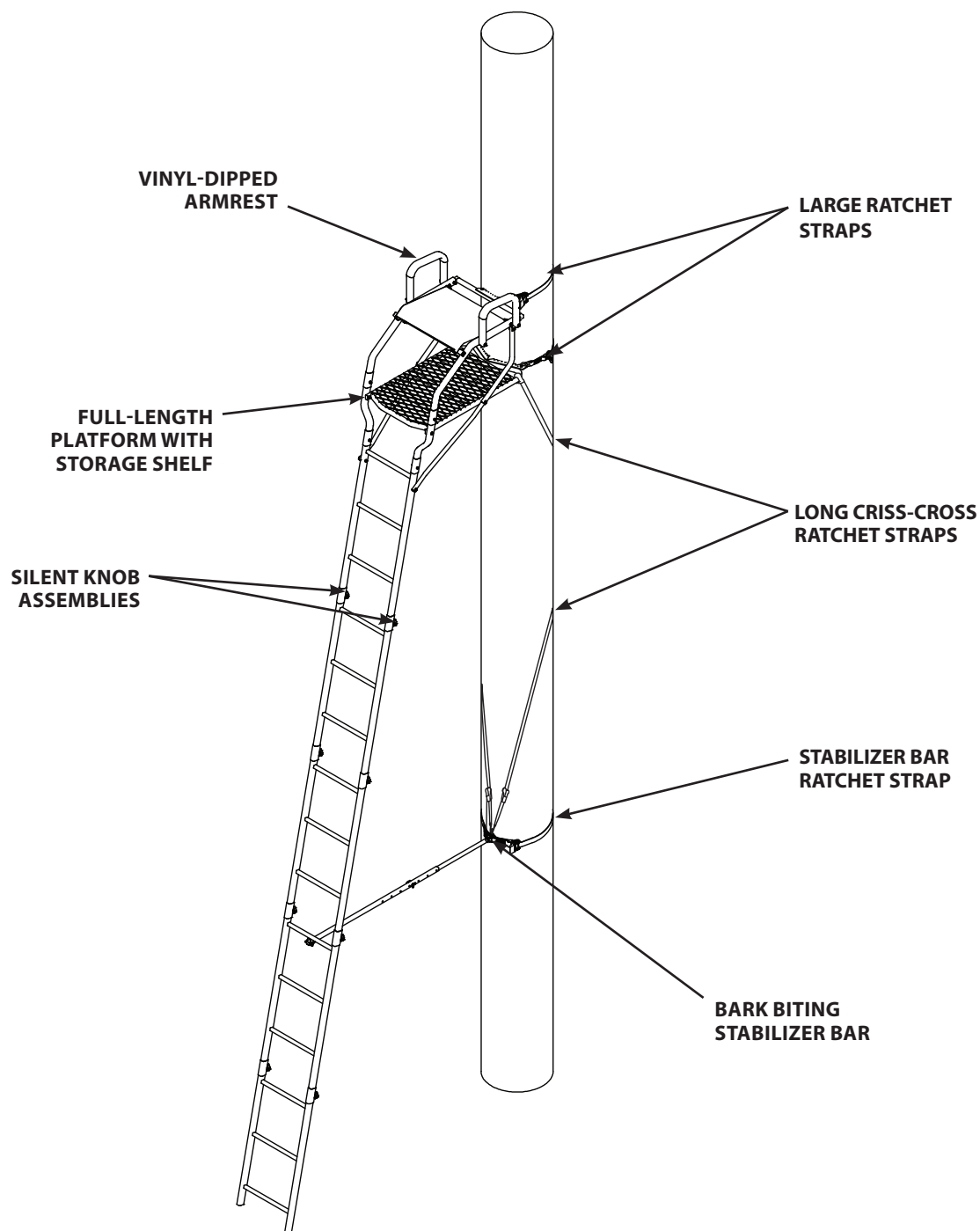
Criss Cross Straps

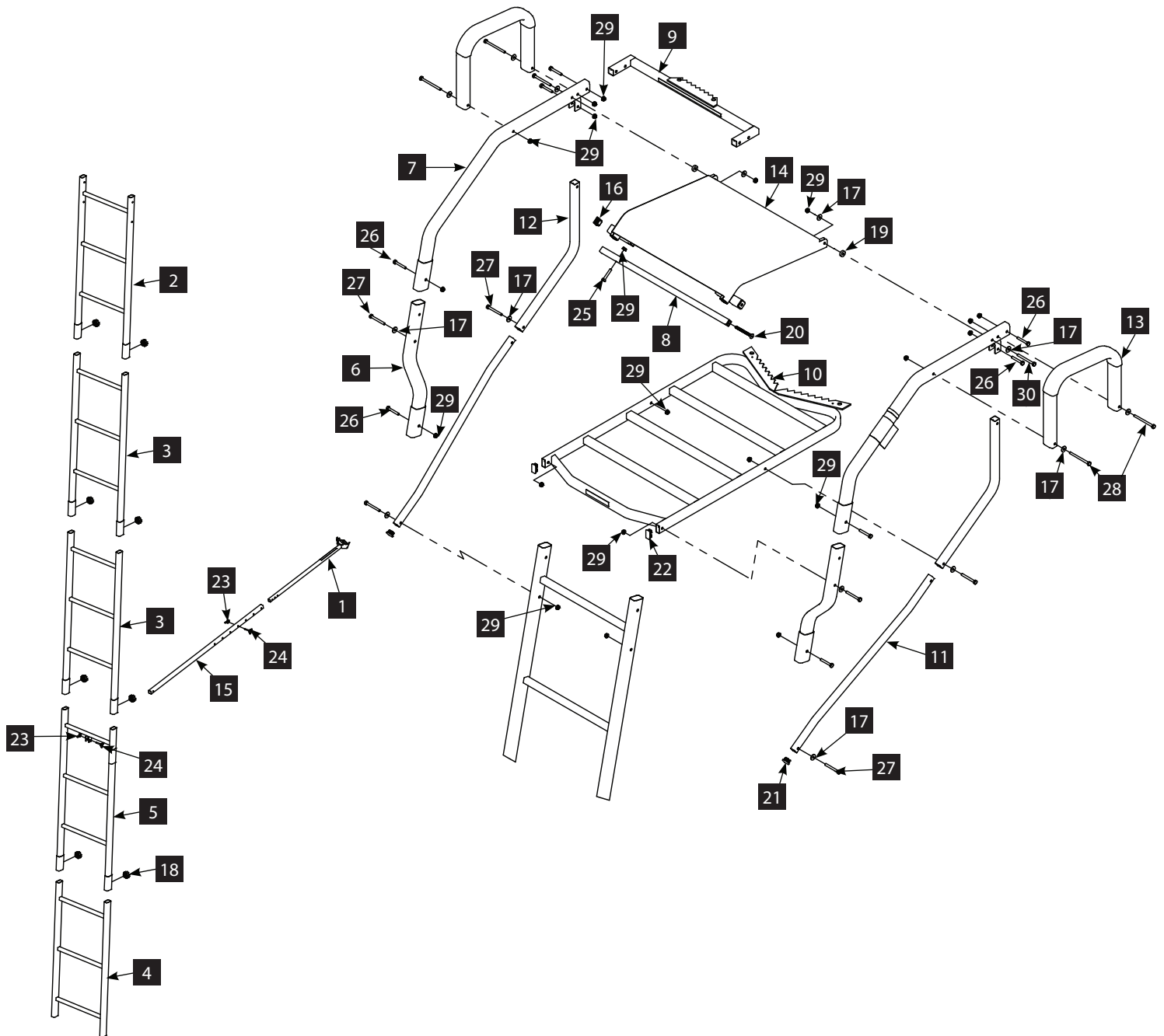


IMPORTANT

- ▲ Reverse the Set-Up and Use Instructions to take the ladder stand down.

FINISHED LADDER





PARTS LIST

ITEM #	PART #	DESCRIPTION	QTY.
1	23775	STABILIZER BAR 27 IN	1
2	29322	TOP LADDER SECTION	1
3	29324	MIDDLE LADDER SECTION	2
4	29326	BOTTOM LADDER SECTION	1
5	29348	MIDDLE LADDER SECTION WITH STABILIZER SLOT	1
6	29461	PLATFORM RAIL	2
7	29462	SEAT SIDE RAIL	2
8	29465	FRONT SEAT TENSIONER	1
9	29467	TOP TREE BLADE	1
10	29469	FOOT PLATFORM	1
11	29472	PLATFORM BRACE	2
12	29473	REAR SEAT SUPPORT	2
13	29734	ARMREST	2
14	29735	TEARTUFF SEAT	1
15	48053	STABILIZER SUPPORT BAR	1
16	23439	PLUG SQ END 22MM	1
17	23572	YELLOW WASHER M6	14
18	23603	KNOB SILENT LADDER	8
19	26913	YELLOW SPACER M6	2
20	26959	BOLT M6 X 1 X 70MM	1
21	29714	PLUG SQ END 18MM	2
22	29738	PLUG SQ END 30MM	2
23	48042B	WING NUT 1/4-20	2
24	48044B	SCREW WING 1/4-20 X 1-3/4 IN	2
25	48240B	BOLT 1/4-20 X 1-1/2 IN	1
26	48250B	BOLT 1/4-20 X 1-3/4 IN	8
27	48271B	BOLT 1/4-20 X 2-1/4 IN	6
28	48273B	BOLT 1/4-20 X 3-1/4 IN	4
29	48752B	NUT 1/4-20	21
30	67540B	BOLT 1/4-20 X 2-3/4 IN	2

ITEMS BELOW ARE NOT SHOWN

31	10531	SAFETY HARNESS / FALL ARREST SYSTEM	1
32	23610	STRAP 1-1/2 IN W/ RATCHET & S HOOKS	2
33	15034	STRAP RATCHET CRISS-CROSS	2
34	11058	STRAP RATCHET STABILIZER BAR	1
35	48800	TREE STAND SAFETY DVD	1
36	29459	HARDWARE BAG - BOLTS	1
37	29460	HARDWARE BAG - NUTS AND WASHERS	1
38	29739	HARDWARE BAG - SILENT POCKETS	1
39	27477	ALLEN WRENCH 4 MM	1

**NO EXTENSIONS AVAILABLE FOR THIS MODEL.
NEVER MODIFY OR EXCEED ORIGINAL STATED USE HEIGHT!**

NOTES:

This image shows a single sheet of white paper with horizontal ruling lines. The lines are evenly spaced and run across the width of the page. There are no margins, text, or other markings on the paper.

OTHER GREAT PRODUCTS BY RIVERS EDGE TREESTANDS



LANDMARK
 PERMANENT BLINDS

Portable ground blinds take a beating from the sun, wind, rain and snow. Colors fade, materials rot, poles break and fabric tears. The Landmark Permanent Blind was designed and constructed to resist the elements year after year. The durable steel frame is covered in marine-grade reinforced synthetic tarpaulin, made from the same rugged materials used in pick-up truck tonneau covers. The window configuration allows you to precisely control gap vertically, horizontally or both. If you're looking for an affordable year-round hunting blind with enough room for group hunts and archers, the Landmark Permanent Blind is for you.

BigFoot™ CLIMBING AIDS



All climbing aids are not created equal. For starters, Bigfoot Climbing Aids feature extra-large rungs that a hunter can place 2 feet on the same level. Next we use a permanent anti-slip coating called Tractionite. Our assortment of climbing aids securely attach to the tree using a cam straps or ratchet straps. We take immense pride and satisfaction in knowing that our designs consistently gain praise from hunters and outfitters who recognize the little differences. A big hunt should never be ruined over a little climb!

BigFoot™ HANG-ONS



Nothing attaches to a tree tighter than a Big Foot™ Treestand! Our line of lever-action hang-on stands bite into the tree eliminating the need for a second strap. Other treestands use small ratchet straps that are not as secure once installed. Perfect for sitting on a tree at ground level or higher up when paired with our climbing aids. Feel the stability of a Big Foot™ Treestand for yourself!

LOCKDOWN™

LADDER STANDS

by



WE ARE HUNTERS

Rivers Edge® Treestands, Inc.

1160 Eighth Avenue, PO Box 755
Cumberland, WI 54829

Phone: 800-450-EDGE (3343)

Fax: 715-822-2124

www.HuntRiversEdge.com

*All weights, specifications and features are approximate and are subject to change without notice. Due to continuous product improvements, product images may not be exact. Warning labels in some product images may have been removed for photography purposes only. Props shown in photos not included. Some assembly may be required.