

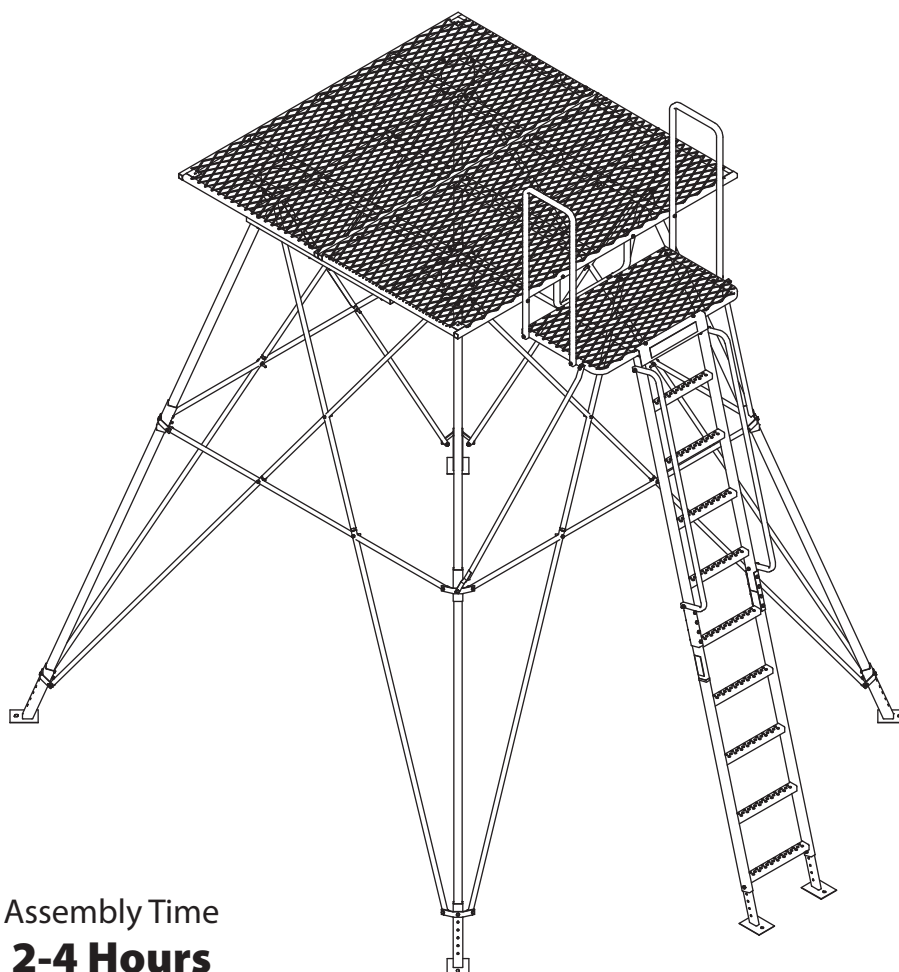
LANDMARKTM

PERMANENT BLINDS

Operator's Manual

LM620

LandmarkTM
10' Tower



Assembly Time
2-4 Hours



Get parts online at
www.HuntRiversEdge.com



PRODUCT MEETS
INDUSTRY STANDARDS
RECOGNIZED BY



PARTICIPATING MEMBER

P/N: 24080
REV2: 05/19/17
© 2017 RETI
All Rights Reserved



INTRODUCTION

We appreciate your purchase of one of our world class products. Follow these few simple instructions and this product will provide you many years of trouble-free pleasure. Instructions should be kept in a safe place and reviewed at least annually.

If for any reason you have a problem with your product, **DO NOT return to the retailer**, contact the RETI customer service department at 800-450-3343 for assistance.

CONTENTS

Introduction/Warranty	2
Warnings.....	3-4
Inspection and Maintenance Schedule.....	4
Assembly Instructions	5-24
Warnings.....	25
Parts Breakdown and Parts List	26-27

WARRANTY

RETI offers a one year warranty for all components of the treestand. These warranties apply to the original owner with a proof of purchase. These warranties begin on the date of purchase by the first retail consumer and continue for the period specified above. These warranties apply to products that are not modified, abused or used in a manner that deviates from the product's intended usage. Minor fading in color is normal and is not covered by warranty. Any corrosion of painted surfaces that occurs as a result of paint being removed or damaged is also not covered by warranty. RETI offers no other warranty expressed or implied. Products for which warranty work has been approved must be sent directly to RETI and performed by RETI. **To obtain warranty service and/or replacement instructions, you must obtain prior approval from RETI before shipping your package to us by calling our customer service department at 800-450-3343 or by writing to: RETI, P.O. Box 755, 1160 Eighth Avenue, Cumberland, WI 54829 for a return material authorization number (RMA#).** All items must be shipped prepaid. RETI will, at no charge, repair or replace, in RETI's sole discretion, any product that satisfies the conditions stated above. RETI retains the right to change models, specifications and price without notice.

This equipment has been manufactured under strict quality and safety guidelines. As with any equipment of this type, full understanding of the instructions and its use is mandatory and imperative for the safety of its user. RETI is not responsible for any damages or injuries sustained due to improper use or modification of any of its products, or resulting from any use which deviates from the product's intended usage. RETI is not responsible for any injuries sustained due to failure to read and adhere to the instructions for use. Any misunderstanding or questions regarding the products of their use should be directed to RETI prior to any use. It is the owner's sole responsibility to inspect the product regularly for damage, improper installation, or conditions that could jeopardize the ultimate safety of the product. **Owner is responsible to understand and follow product field weight rating and must never exceed maximum weight rating.** RETI is not responsible for any malfunction or injury resulting from normal wear and tear, damage caused by improper use, improper maintenance, negligence or accidents. This product, if used safely as intended, will provide trouble free service for the useful life of the product. We hope you will enjoy the quality of our products for years to come, and have a safe hunt.

If you choose to attach a blind type structure on this product, only use RETI original designed structures to do so.*Using man-made structures or structures not manufactured by RETI will void your warranty and waive any and all claims for liability against the manufacturer RETI.



MODEL LM620

MAXIMUM USE HEIGHT - 10' TO PLATFORM

TOTAL WEIGHT LIMIT - 800 LB (300 lb Per Person Max)



WARNING

- ▲ This product carries strict height and weight restrictions. **Do Not** use this product if you exceed the total weight limit. Please note that the total weight limit includes the user(s) and their equipment.



WARNING

- ▲ **When hunting from a treestand or free standing platform stand falls can occur any time after leaving the ground causing injury or death.**
- ▲ **Read and understand** all of the manufacturer's Warnings and Instructions and use all safety devices provided by the manufacturer. Contact the manufacturer for any questions. Failure to do so could result in injury or death.
- ▲ **Never** exceed the total weight limit of the treestand or free standing platform stand.
- ▲ **Never** use a treestand or free standing platform stand during inclement weather such as rain, lightning, windstorms or icy conditions and end your hunt and return to the ground if inclement conditions arise.
- ▲ **Never** use a treestand or free standing platform stand while using drugs (even prescription drugs) or alcohol.
- ▲ **Never** use a treestand or free standing platform stand while feeling ill, nauseous or dizzy, or if you have a prior medical condition that could cause a problem, that is, heart condition, joints that lock-up, spinal fusions, etc., or if you are not well rested. **Never** sleep in stand.
- ▲ **Always** avoid electrical power lines.
- ▲ **Never** rely on a tree branch for support.
- ▲ **Never** jump or bounce on a treestand or free standing platform stand to seat it to the tree or ground.
- ▲ Pull up a bow, backpack, or firearm or other equipment only after being secure in the treestand or free standing platform stand and a firearm must be pulled up with it unloaded, chamber open, and muzzle down.
- ▲ **Always** inform someone of the hunting location, where the treestand or free standing platform stand will be located and the expected duration of the hunt.



WARNING

- ▲ A signal device such as a mobile phone, radio, whistle, signal flare or personal locator device (PLD) must be on your person and readily available at all times.
- ▲ Inspect the treestand or free standing platform stand and all safety devices each time before use and **Do Not** store a treestand or free standing platform stand outdoors when not in use.
- ▲ **Never** modify your treestand or free standing platform stand in any way by making repairs, replacing parts, or altering it except if explicitly authorized in writing by the manufacturer.
- ▲ Practice installing, adjusting and using your treestand or free standing platform stand at ground level prior to using it at elevated positions. Study your new stand to become familiar with all of its features and design. Doing so will confirm that the product is manufactured, assembled and installed correctly.
- ▲ Instructions (written and video) shall be kept in a safe place and reviewed at least annually. It is the responsibility of the treestand or free standing platform stand owner to furnish the complete instructions to any person who borrows or purchases the treestand or free standing platform stand.
- ▲ **Always** use at least five (5) people to install or take down a free standing platform stand.
- ▲ Stabilization devices must be attached before climbing to the platform.
- ▲ When installing a ladder stand or free standing platform stand, always bounce on the first rung to set the ladder into the ground according to manufacturer's instructions before proceeding to climb any higher.
- ▲ Check every ladder/leg section connection every time you use the stand before you leave the ground. If ladder/leg sections are separating, do not use the stand.
- ▲ Check the ground under the stand to make sure it is firm and level. Sloping ground or uneven surface (one side on a rock) can cause your ladder or free standing platform stand to tilt or shift off as you climb.
- ▲ **Always** maintain three (3) points of contact when climbing a ladder treestand or free standing platform stand. Proper three-point contact means having either two feet with one hand or one foot with two hands on the step portion of the ladder or climbing aid at all times.
- ▲ **Always** lean forward as you climb ladder or climbing aid.
- ▲ **Never** exceed the stated maximum use height.



WARNING

- ▲ **Do Not** use this product until you have watched the included treestand safety DVD, understand it, and practiced the techniques for safe hunting discussed in this DVD.
- ▲ Read and perform all inspection and maintenance tasks before each and every use. Replace any questionable components immediately with RETI original replacement parts.
- ▲ **Do Not** crush tubing when tightening bolt assemblies! Identify and familiarize yourself with all parts before you start. Bolt identification chart can be found in the back.
- ▲ Double check assembly steps to be certain you have correctly assembled this product.
- ▲ **Never** use any product that has not been maintained or inspected properly - Your life depends on it!
- ▲ **Always** wear the appropriate footwear when using a free standing platform stand. A good non-slip safety boot is important to your personal safety. Be especially careful that boot laces do not get hooked on the stand or any of its components (tuck shoelaces into boots before climbing).
- ▲ Do not position this product on a slope, unlevel, or wet ground. It may tip over and serious injury or death may occur.
- ▲ Ground must be free of rocks and debris so stakes can be driven into ground through holes provided in foot pads. This will help prevent tower from tipping over in strong winds.
- ▲ Contacting buried utilities may result in serious injury or death! Before digging always call 811 or you local One-Call system to prevent person injury, interruption of service, environmental accidents or project delays.
- ▲ Heavy product, **Always** use at least five (5) people to install or take down a free standing platform stand. **Do Not** let someone with a history of back problems help.

INSPECTION AND MAINTENANCE SCHEDULE

BEFORE EACH USE PERFORM THE FOLLOWING:

- Inspect all webbing, rope, cord, and strap assemblies for wear or damage.
- Inspect cables and/or cable ends for damage or kinking.
- Inspect all hardware and chain components for damage.
- Inspect for any structural damage to product. (If any exists call RETI customer service.)
- Inspect all nut and bolt assemblies to be certain none are loose.
- Inspect for any missing parts.
- Lubricate all pivot and slide together points with powder graphite, petroleum jelly or silicone spray to prevent noise, wear and rust.
- Inspect entire product for any rust, corrosion, cracks, freezing, excessive heat or rotting damage that may effect the safety of your product. Discard any questionable product.
- Inspect entire product for any structural damage - pay close attention to all weld locations. (Return to factory for repair or discard product if any damage is found.)
- Using correct wrenches inspect all nut & bolt assembly locations and snug up any that may be loose. Be careful not to crush tubing when tightening!
- Inspect and check operation of all cables, cable ends, cord, rope, webbing, and strap or chain assemblies. Replace with factory new any item or assembly that shows signs of wear, damage, kinking, or functions incorrectly.
- Inspect seat. Replace any seat with factory new that shows signs of structural damage or wear.
- Inspect all hardware for wear or damage, also be sure you have no missing parts.
- Never modify your stand in any way by making repairs, replacing parts, or altering adding or attaching anything to it except if explicitly authorized in writing by the manufacturer.



ASSEMBLY INSTRUCTIONS

Tools needed: two 13mm wrenches, one 7mm wrench, large hammer or mallet (to drive ground stakes into ground) and tape measure.



WARNING

⚠ **Only** use approved RETI parts. Failure to do so may result in serious injury or death!

All assembly must be done completely in this order before use.

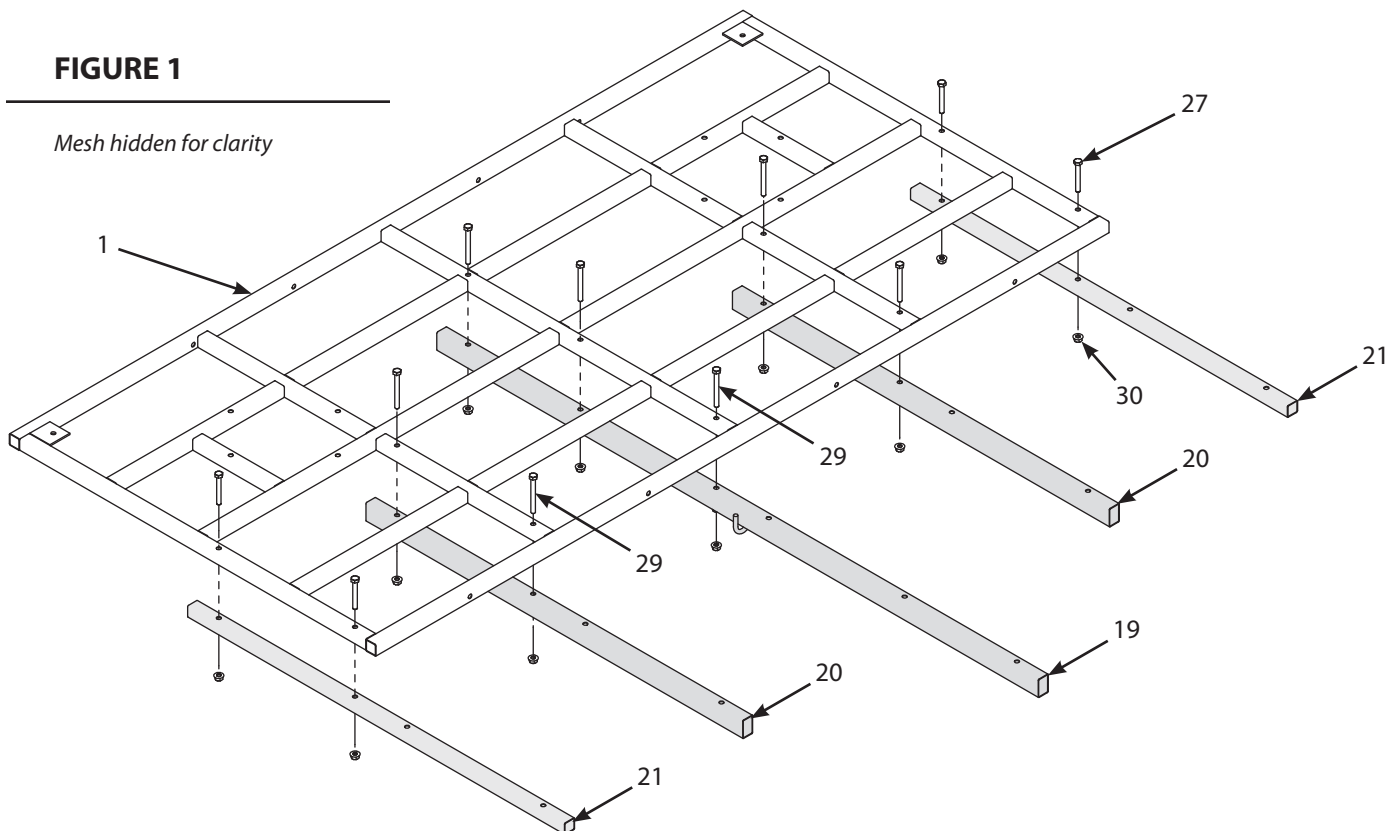
Measure out assembly/intended use location, assembled footprint of product is 10' x 12'. Allow additional room for assembly.

Do not remove labels/warnings from product, they are there for your safety.

Recommended for adult use only.

FIGURE 1

Mesh hidden for clarity

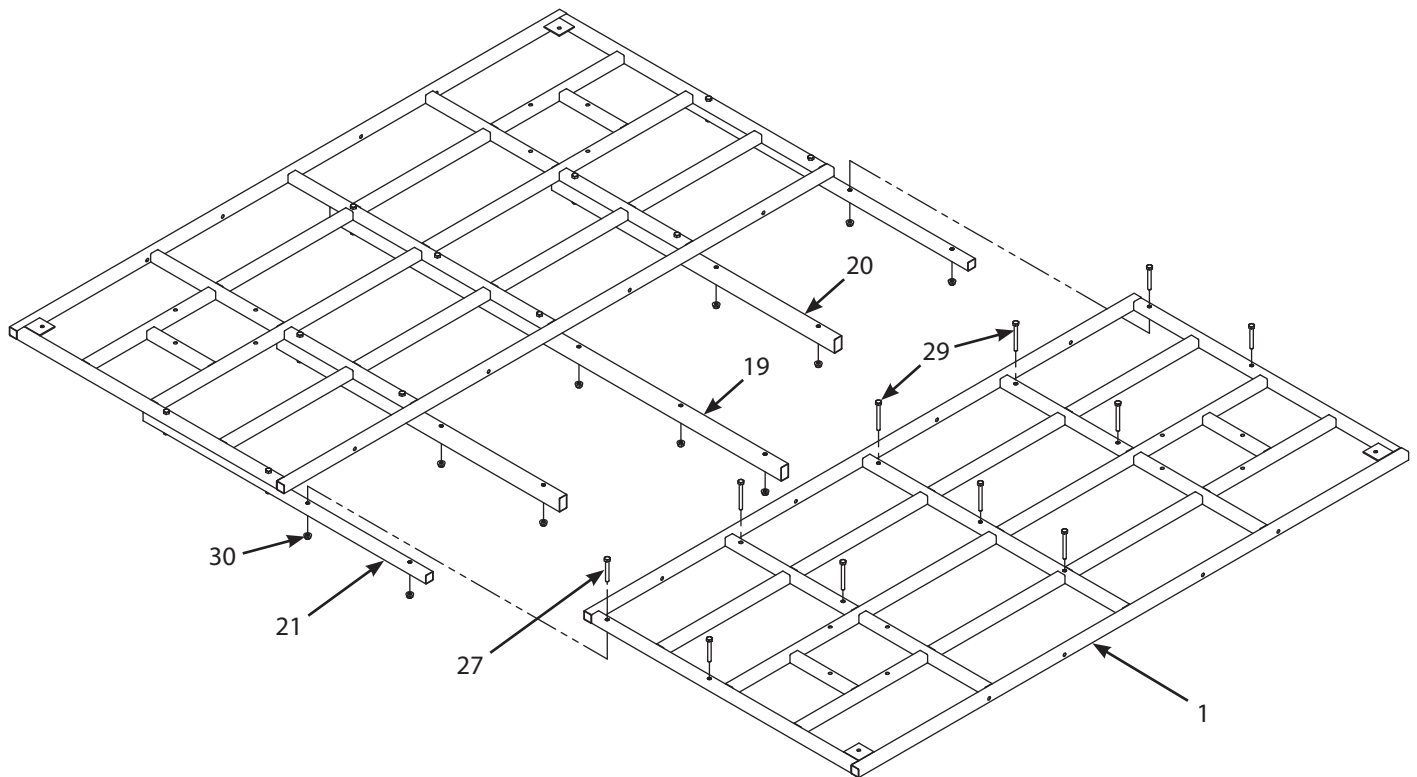


1. Attach two, square, outside platform braces (21) to the bottom of one platform (1) using two M8x60mm bolts (27) and nuts (30) for each brace. **SEE FIGURE 1.**
2. Attach two, rectangular platform braces (20) to the bottom of same platform using two M8x75mm bolts (29) and nuts (30). **SEE FIGURE 1.**
3. Attach center, rectangular, platform brace (19) to the bottom, center of same platform using three M8x75mm bolts (29) and nuts (30). Make sure welded on rod is oriented down (away) from platform. **SEE FIGURE 1.**



FIGURE 2

Mesh hidden for clarity

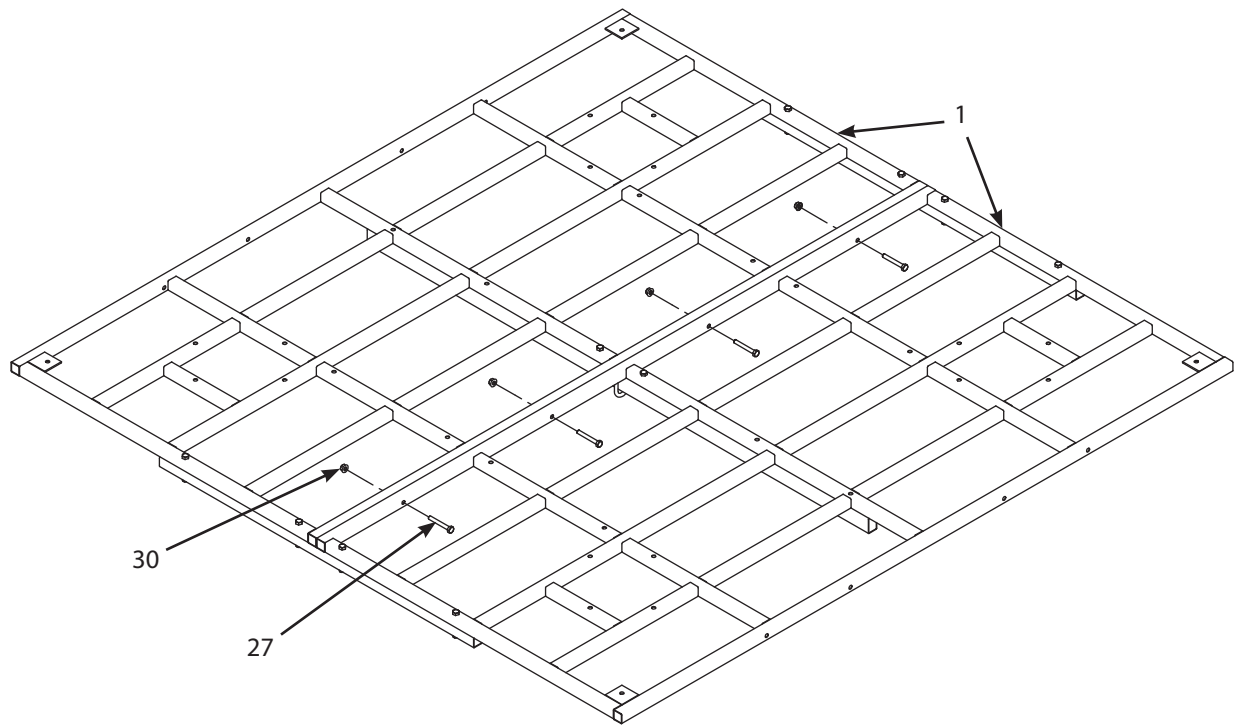


4. Attach second platform (1) to all five platform braces (19, 20, 21) using four M8x60mm bolts (27) on the two outside, square, platform braces (21), seven M8x75mm bolts (29) on the three inside, rectangular, platform braces (19, 20), and nuts (30). Tighten all loose hardware securely at this time. **SEE FIGURE 2.**



FIGURE 3

Mesh hidden for clarity

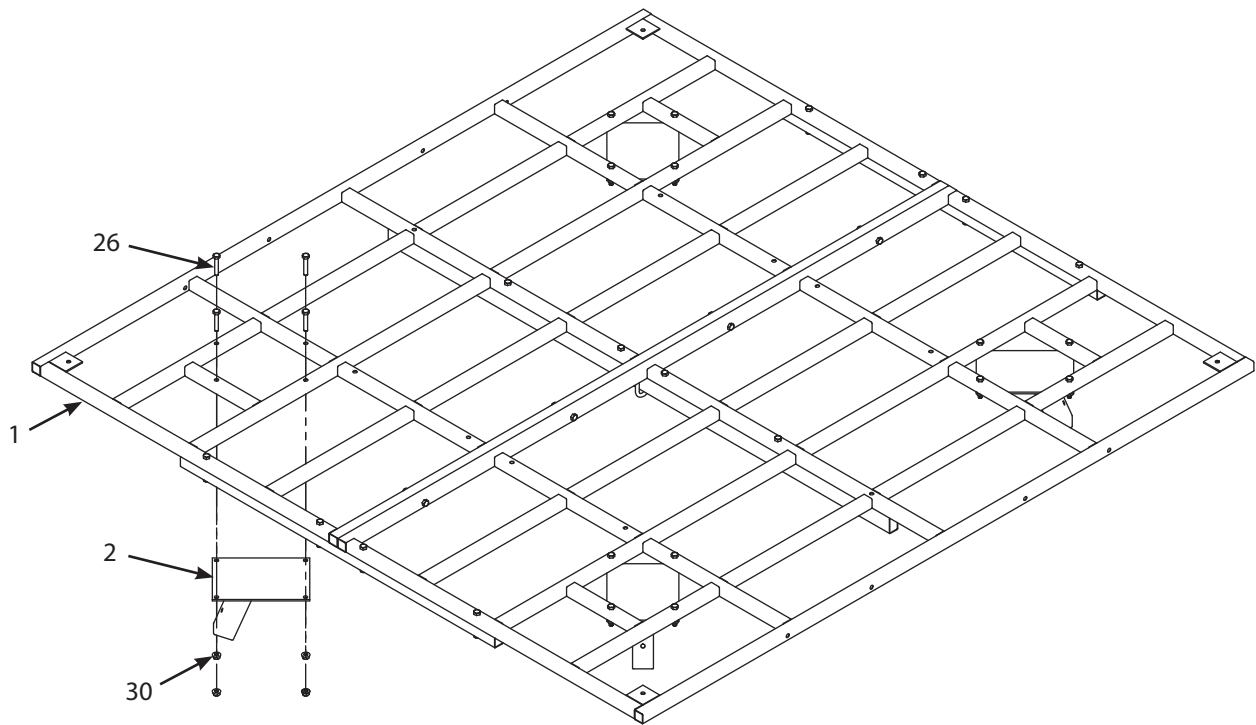


5. With platforms and braces partially assembled, secure the two platforms (1) together using four M8X60mm bolts (27) and nuts (30). Securely tighten all loose platform hardware at this time. **SEE FIGURE 3.**



FIGURE 4

Mesh hidden for clarity



6. Attach the four leg brackets (2) to the bottom of assembled platforms (1) using sixteen M8x45mm bolts (26) and nuts (30). Make sure brackets are oriented so they all point “outward” towards the outer corners of assembled platforms. Tighten all loose hardware securely at this time. **SEE FIGURE 4.**



FIGURE 6

Mesh hidden for clarity

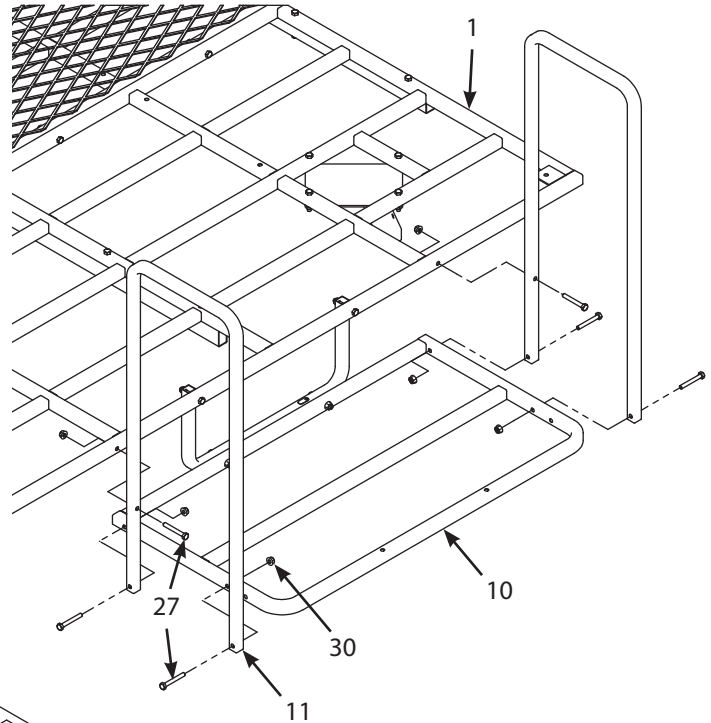
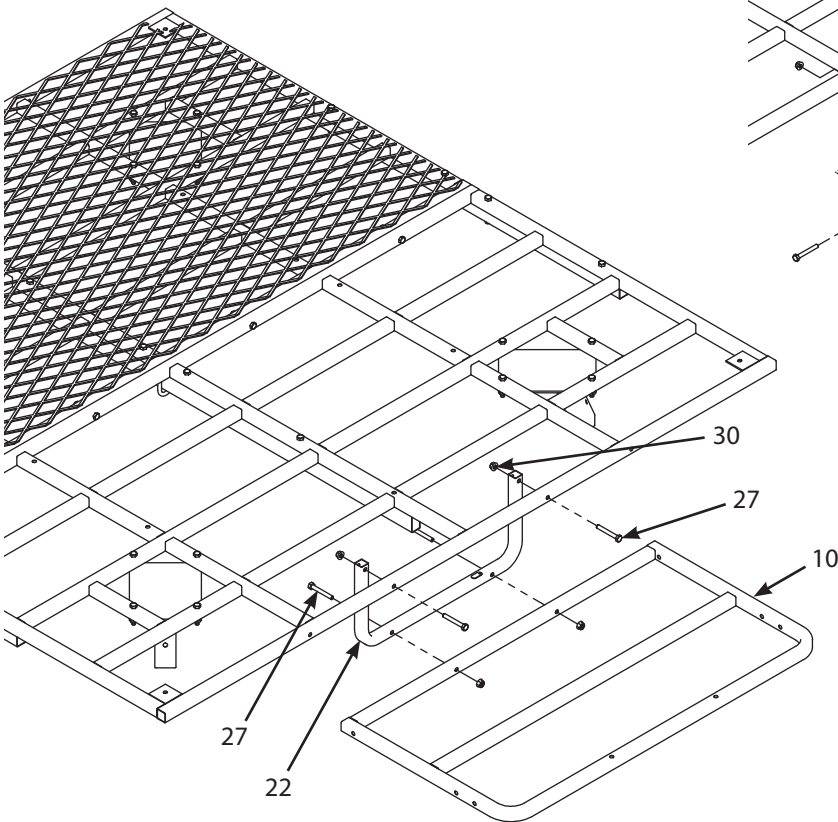


FIGURE 5

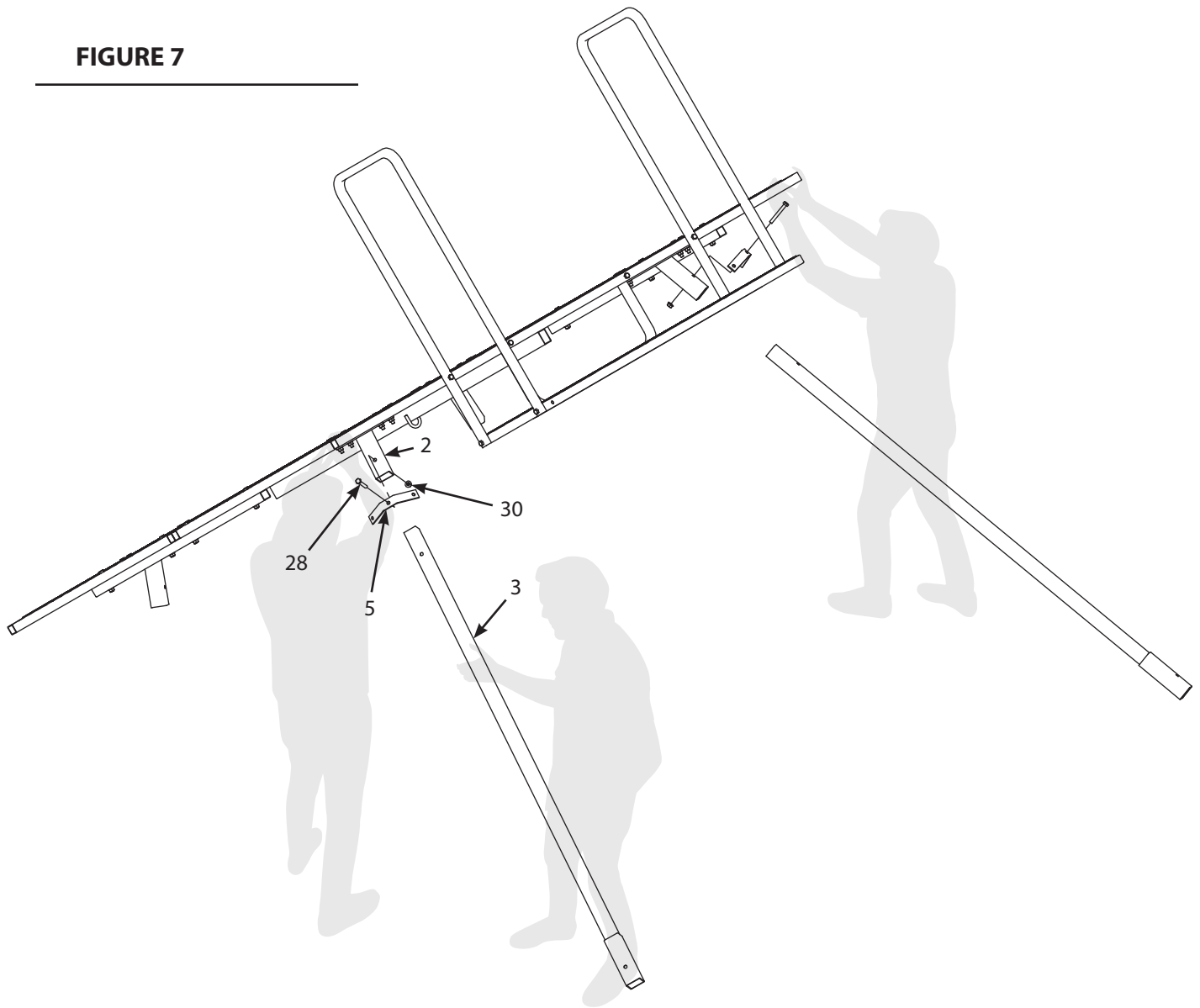
Mesh hidden for clarity



7. Attach entry platform rear brace (22) to either platform (1) underneath the mesh using two M8x60mm bolts (27) and nuts (30). **SEE FIGURE 5.**
8. Attach entry platform (10) to the entry platform rear brace (22) using two M8x60mm bolts (27) and nuts (30). **SEE FIGURE 5.**
9. Attach entry platform hand rails (11) to the entry platform (10) and platform (1) using six M8x60mm bolts (27) and nuts (30). Tighten all loose hardware securely at this time. **SEE FIGURE 6.**



FIGURE 7

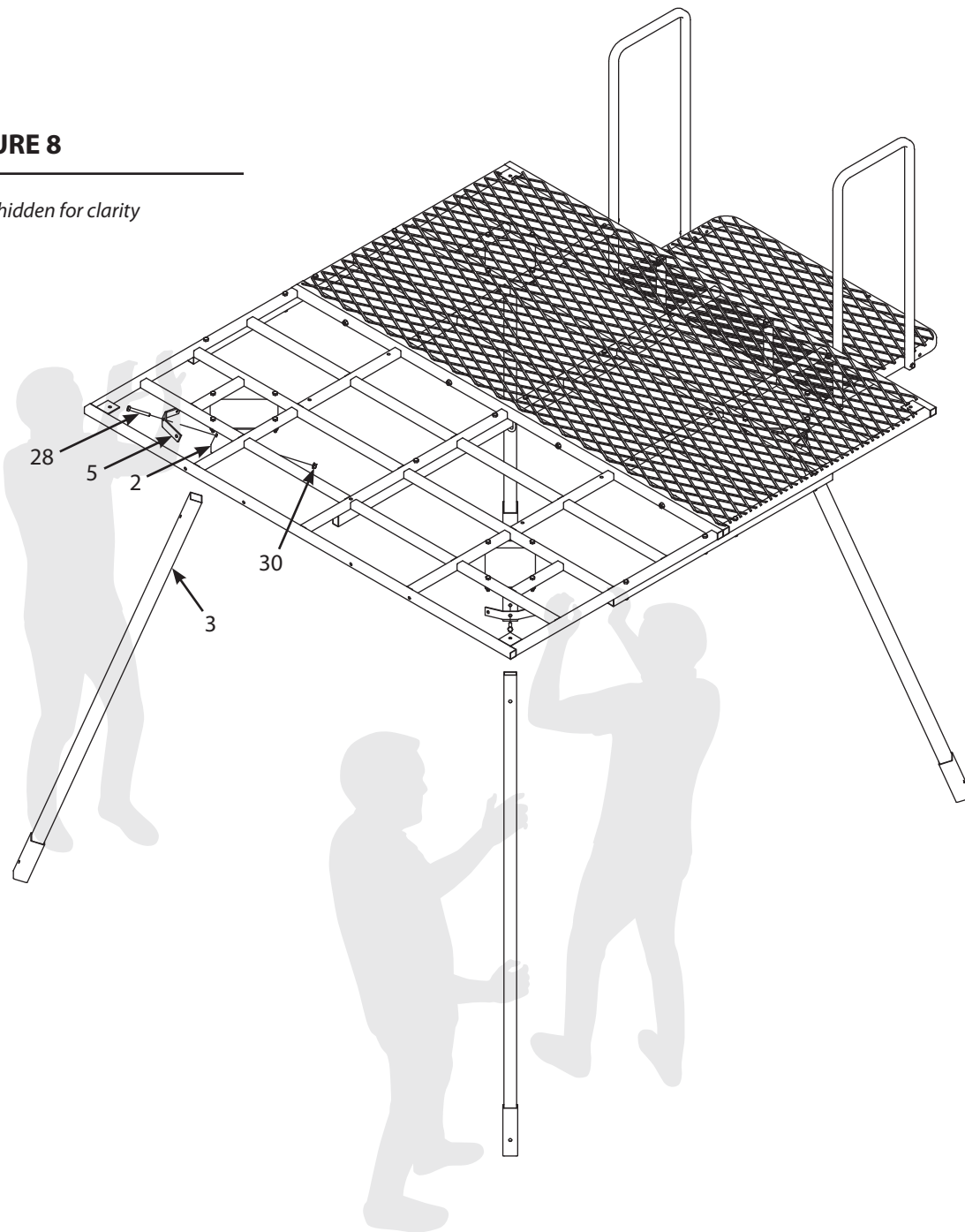


10. With the help of two people, tip assembled platform onto the back side by lifting on the entry platform side and inserting two upper legs (3) into leg brackets (2). Attach brace attachment bracket (5) to each leg bracket (2) and secure together using two M8x65mm bolts (28) and nuts (30). Bolts must go through all components. **SEE FIGURE 7.**



FIGURE 8

Mesh hidden for clarity

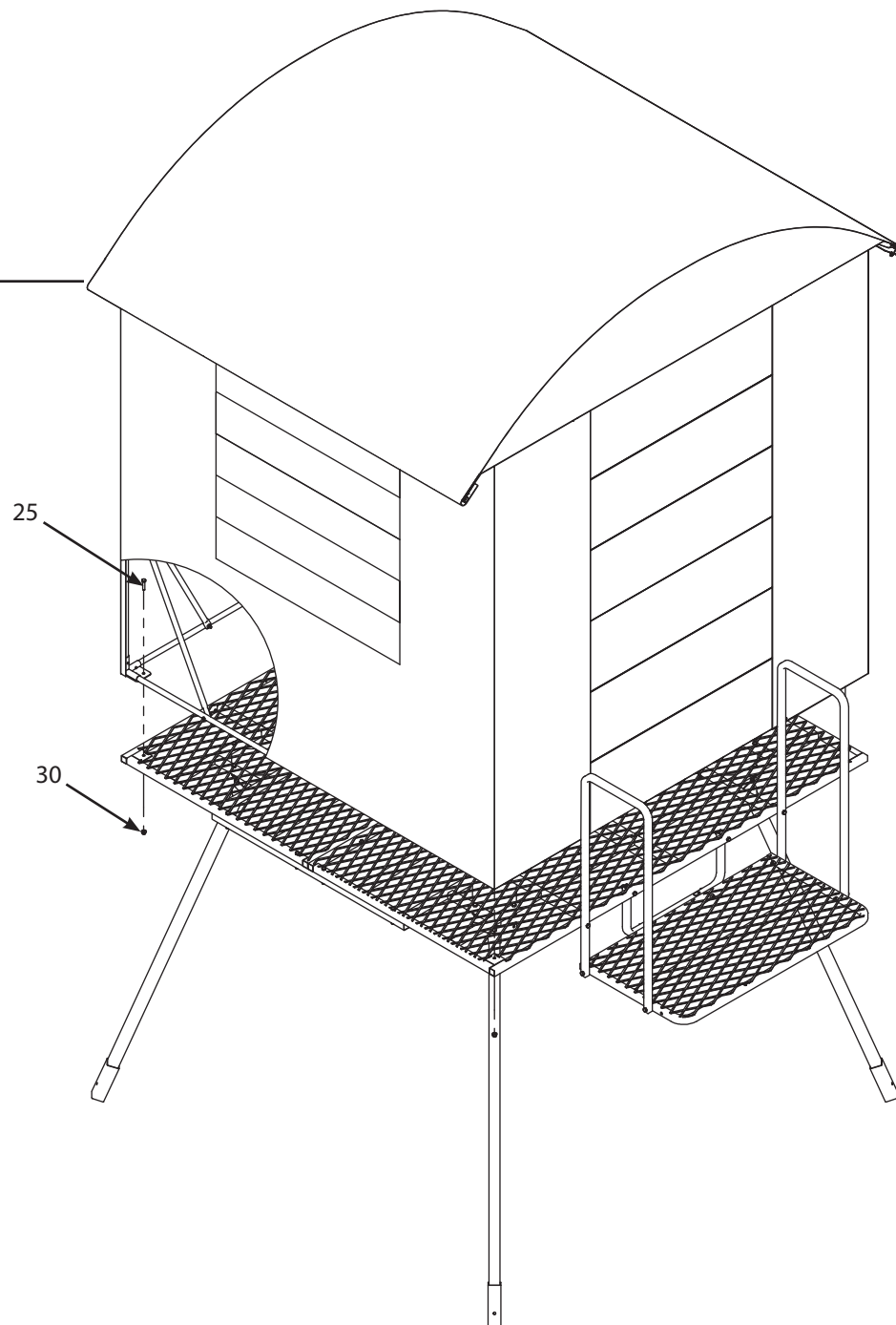


11. With the help of two people, lift rear of platform up and insert two upper legs (3) into leg brackets (2). Attach brace attachment bracket (5) to each leg bracket (2) and secure together using two M8x65mm bolts (28) and nuts (30). Bolts must go through all components. Tighten all nuts and bolts securely. Tighten all loose hardware securely at this time. **SEE FIGURE 8.**



FIGURE 9

*Blind removed for
clarity moving forward*

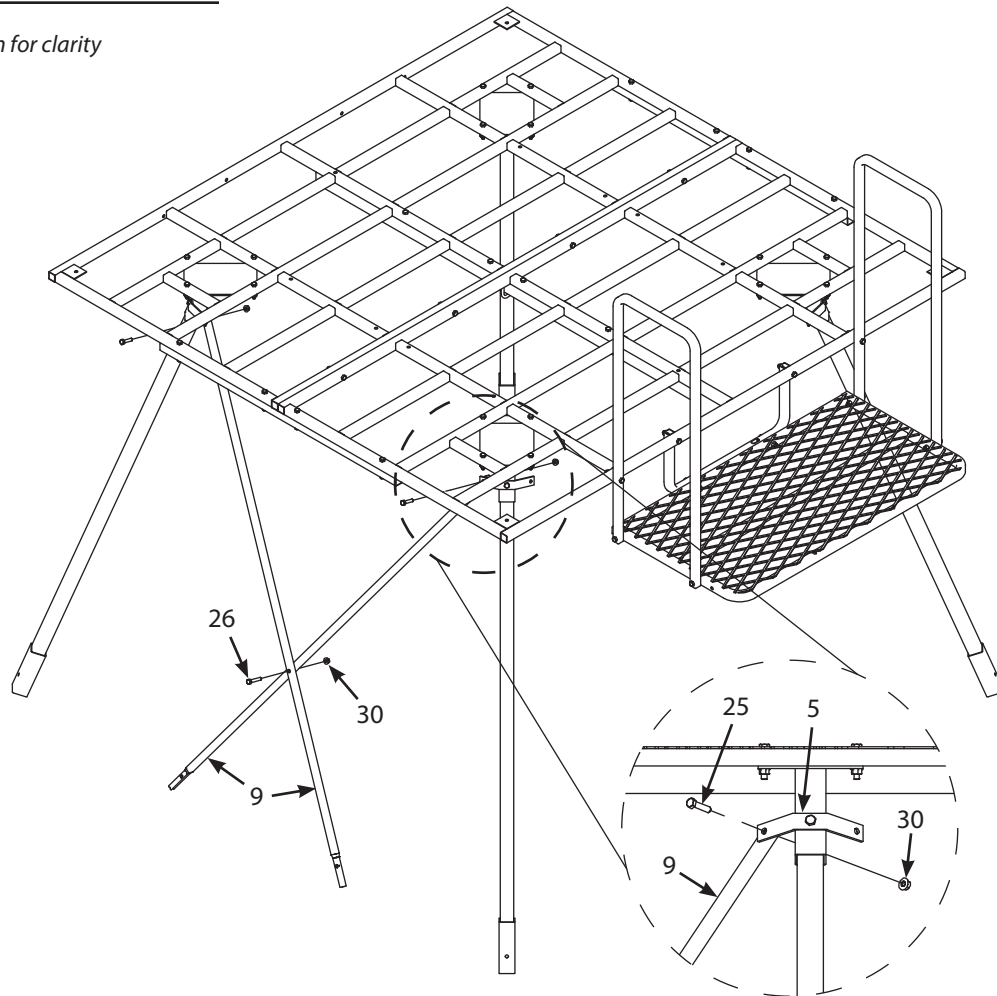


12. If you have purchased a Landmark Permanent Blind, now is the time to attach the assembled blind to the top of partially erected platform. Once Landmark Permanent Blind is properly assembled per the instructions that were provided with it, it can be lifted off the ground and set on top of the partially erected platform with the help of three other people (four total persons; one in each corner). You must make sure blind entry door is orientated on the side of platform that has the entry platform. Secure assembled blind to the platform using four M8x35mm bolts (25) and nuts (30). Tighten all loose hardware securely at this time. **SEE FIGURE 9.**



FIGURE 10

Mesh hidden for clarity

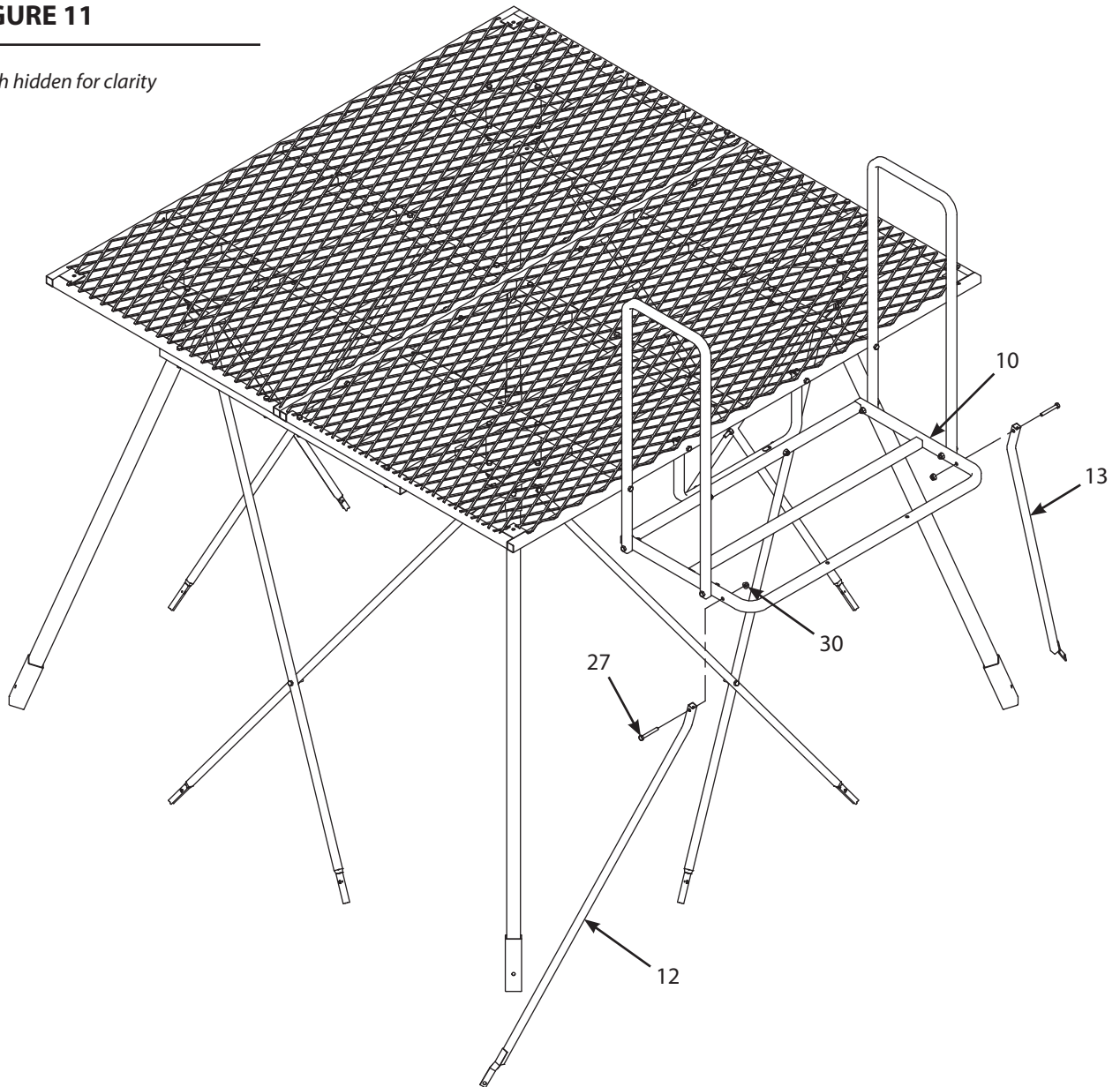


13. Attach eight upper angled braces (9) to the inside of previously assembled brace attachment brackets (5) using one M8x35mm bolt (25) and nut (30) for each brace. **SEE FIGURE 10.**
14. Attach the previously assembled upper angled braces (9) to each other forming an "X" using one M8x45mm bolt (26) and nut (30) for each "X". Tighten all loose hardware securely at this time. **SEE FIGURE 10.**



FIGURE 11

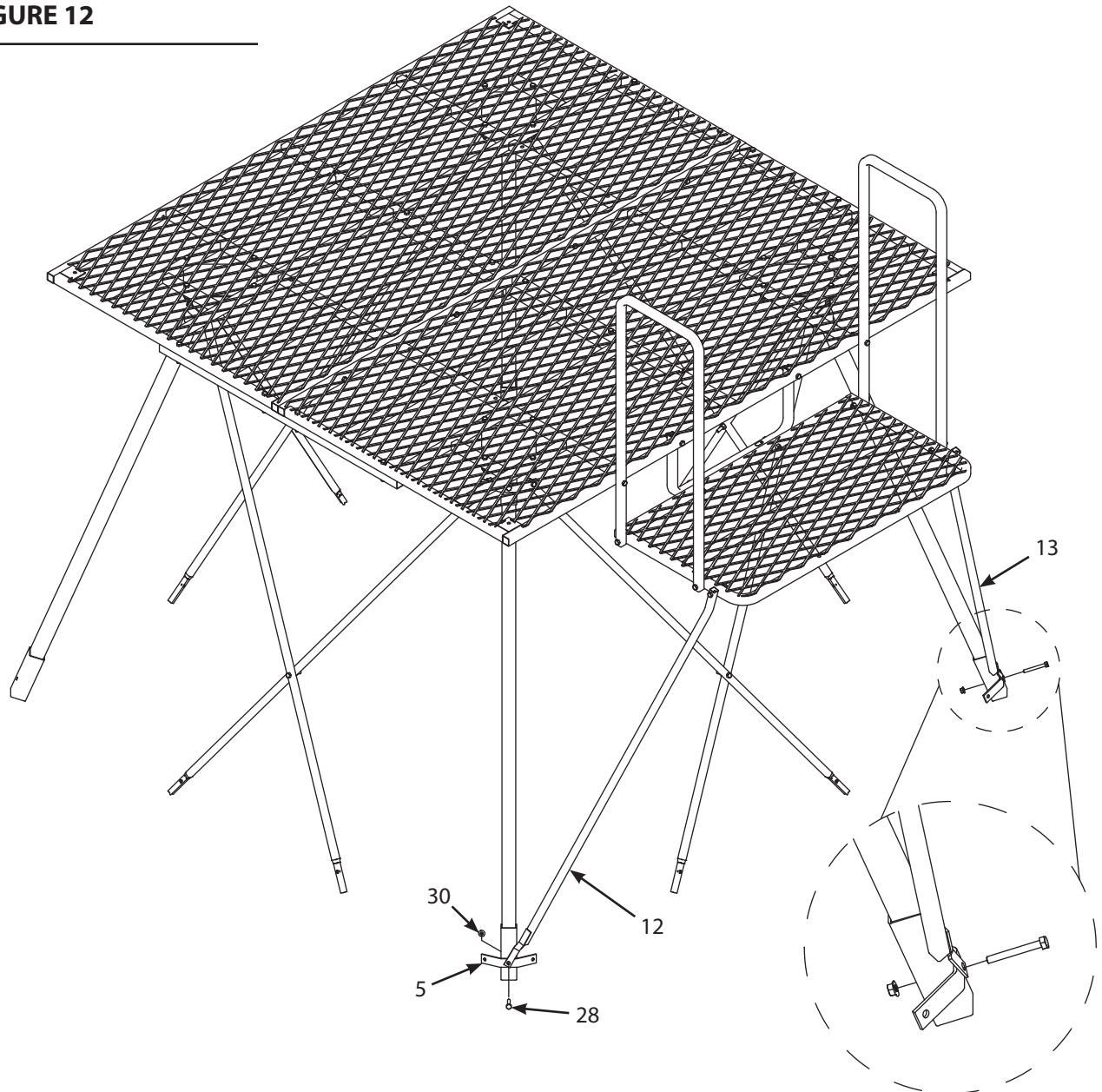
Mesh hidden for clarity



15. Attach the left entry platform brace (12) and the right entry platform brace (13) to the entry platform (10) using two M8x60mm bolts (27) and nuts (30). Make sure you have the left and right pieces oriented correctly so welded on twist bracket aligns with upper leg! Tighten all loose hardware securely at this time. **SEE FIGURE 11.**



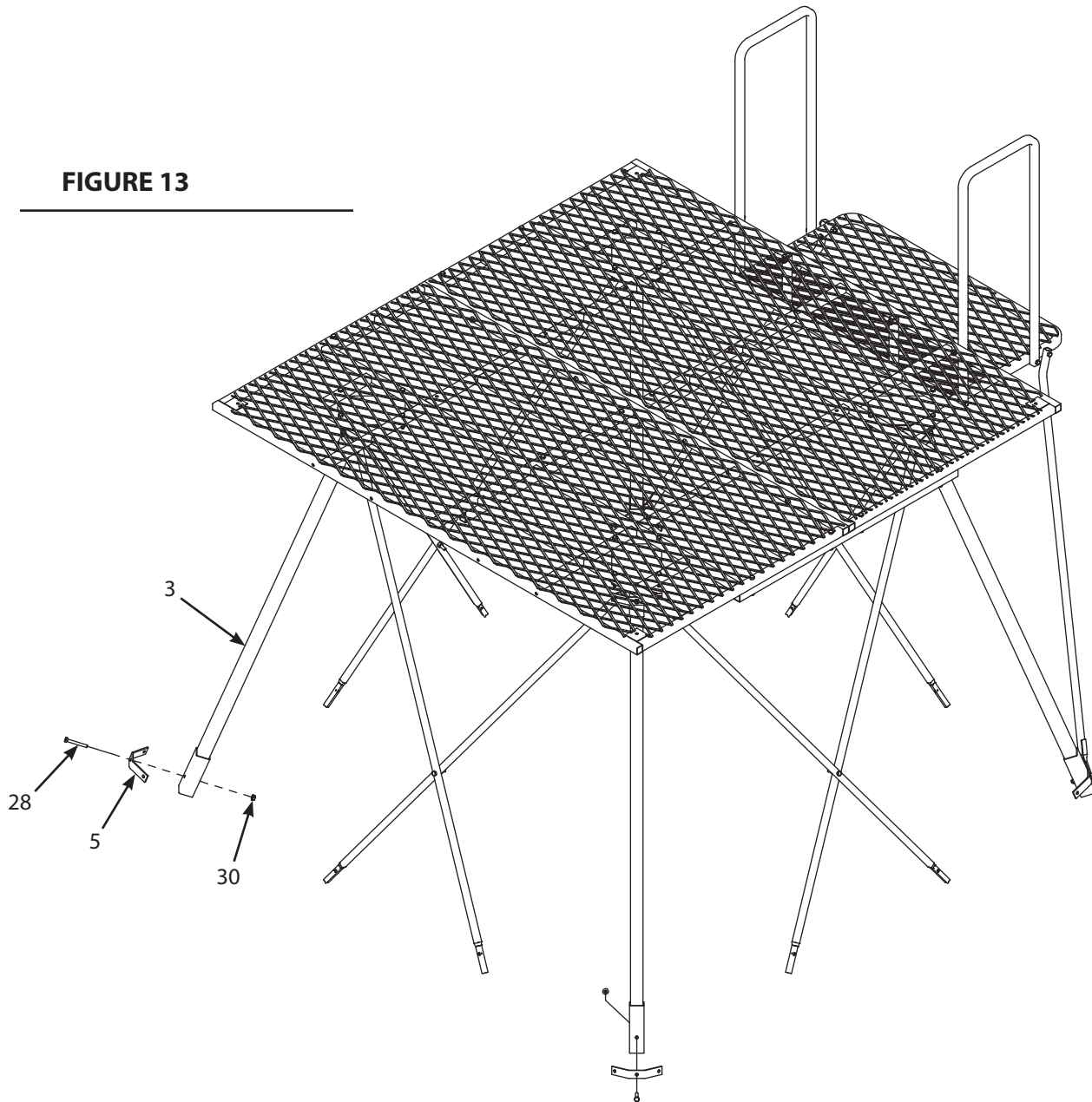
FIGURE 12



16. Temporarily attach the opposite ends of left and right entry platform braces (12, 13) and two brace attachment brackets (5) to the upper legs (3) by inserting two M8x65mm bolts (28) and nuts (30). These bolts will be removed later in assembly to allow lower legs to be attached, then re-inserted and used so you should not tighten these two bolts at this time. Make sure left and right pieces are oriented correctly so welded on twist bracket aligns with upper leg and brace attachment bracket. Bolts must pass through all three parts with the attachment bracket in the middle. **SEE FIGURE 12.**



FIGURE 13



17. Temporarily attach two brace attachment brackets (5) to the remaining two upper legs (3) by inserting two M8x65mm bolts (28) and nuts (30). These bolts will be removed later in assembly to allow lower legs to be attached, then reinserted and used so you should not tighten at this time. **SEE FIGURE 13.**



FIGURE 14

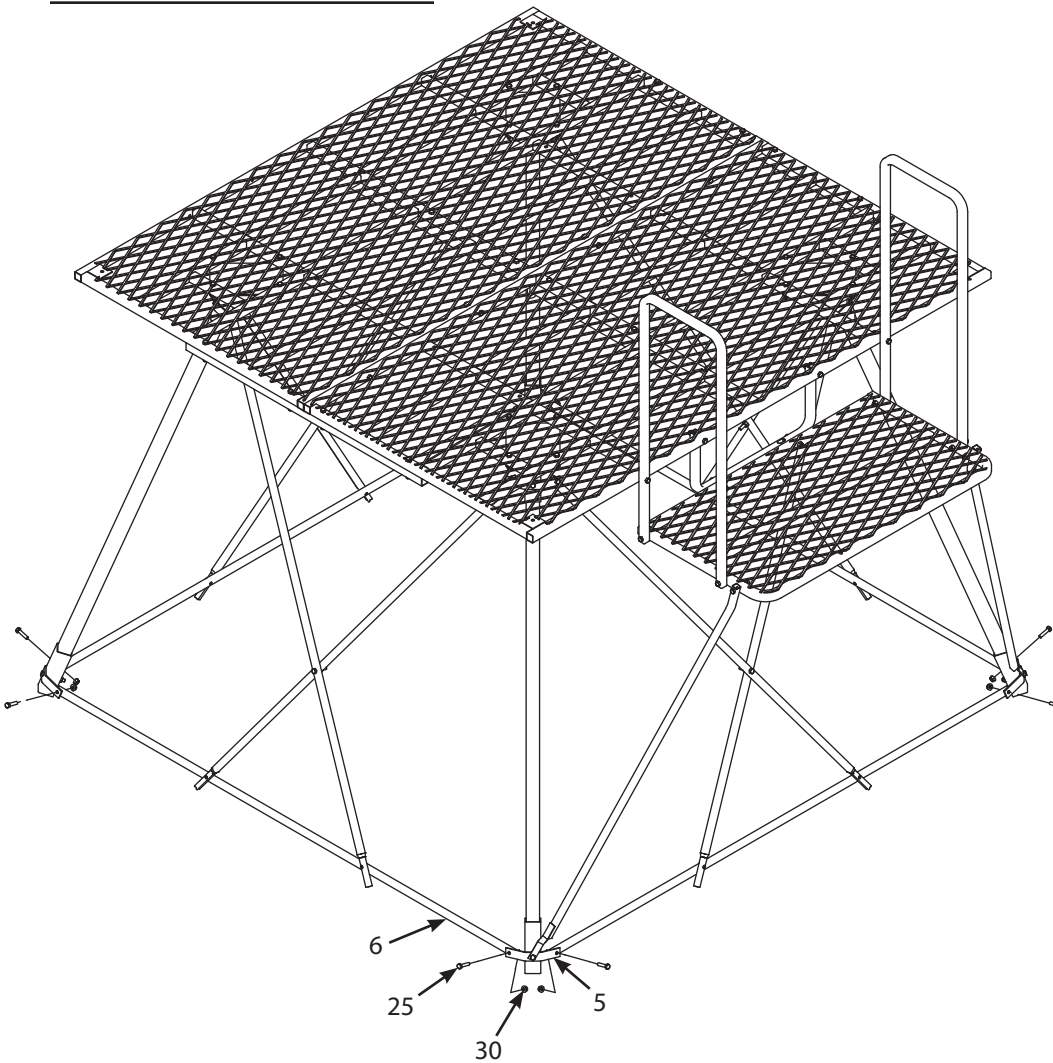
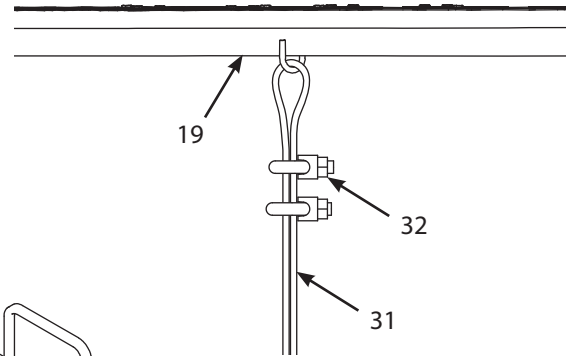


FIGURE 15



18. Attach four horizontal cross braces (6) to brace attachment brackets (5) using eight M8x35mm bolts (25) and nuts (30). Tighten securely these eight pieces of hardware at this time. **SEE FIGURE 14.**

19. Attach cable (31) and two cable clamps (32) to center platform brace (19) by feeding cable through welded on loop and tighten securely with two cable clamps. **SEE FIGURE 15.**



FIGURE 17

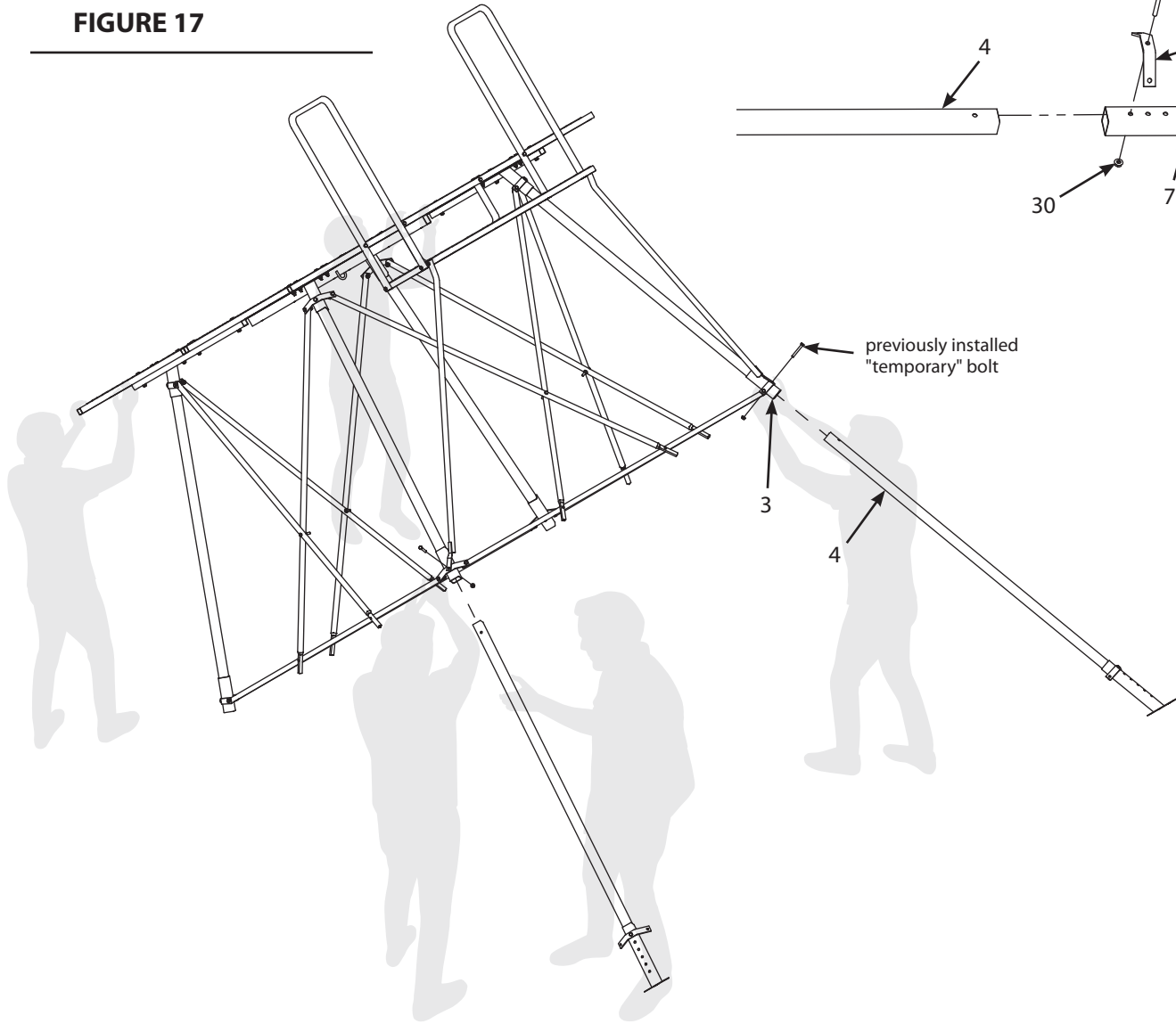


FIGURE 16

20. Slide one foot (7) onto each lower leg (4). Attach brace attachment brackets (5) to each of the feet (7) using four M8x65mm bolts (28) and nuts (30). Make sure the bolt passes through both the lower leg (4) and the foot (7). **SEE FIGURE 16.**
21. With two people positioned on front side of partially erected tower and two other people on backside, slowly tip the partially erected tower over far enough for the two people on the opposite side to catch the tower at the edge of the platform and prevent it from tipping over completely on its side. Once these four people have the tower balanced securely, a fifth person should insert two lower legs (4) into upper legs (3). In order to do this, the fifth person must also remove the previously installed "temporary" bolts and then quickly re-insert them after legs are slid together. Make sure feet pads are pointing outward. **SEE FIGURE 17.**



FIGURE 18

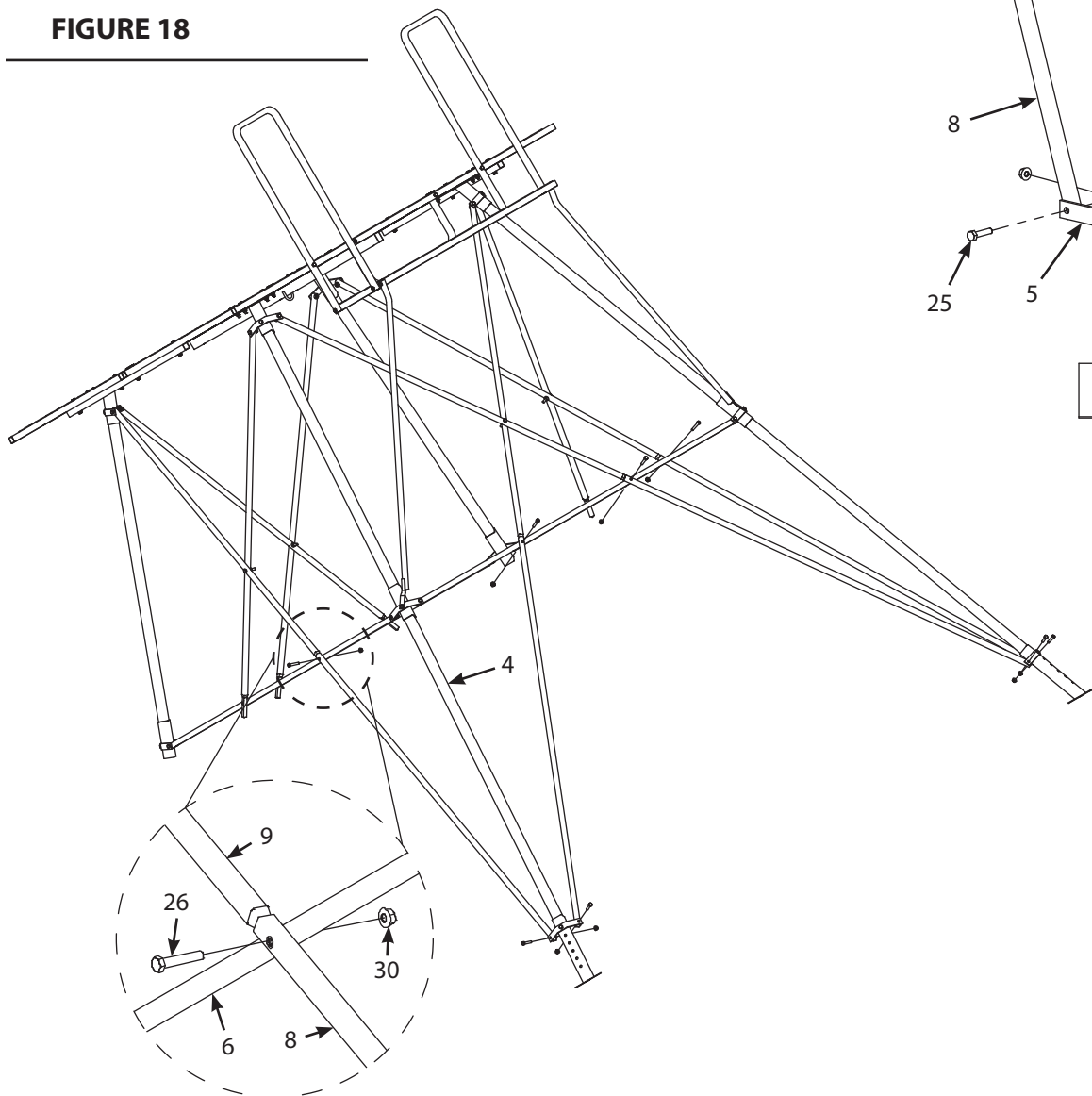
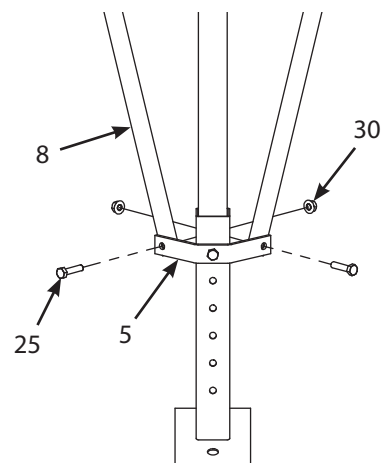


FIGURE 19

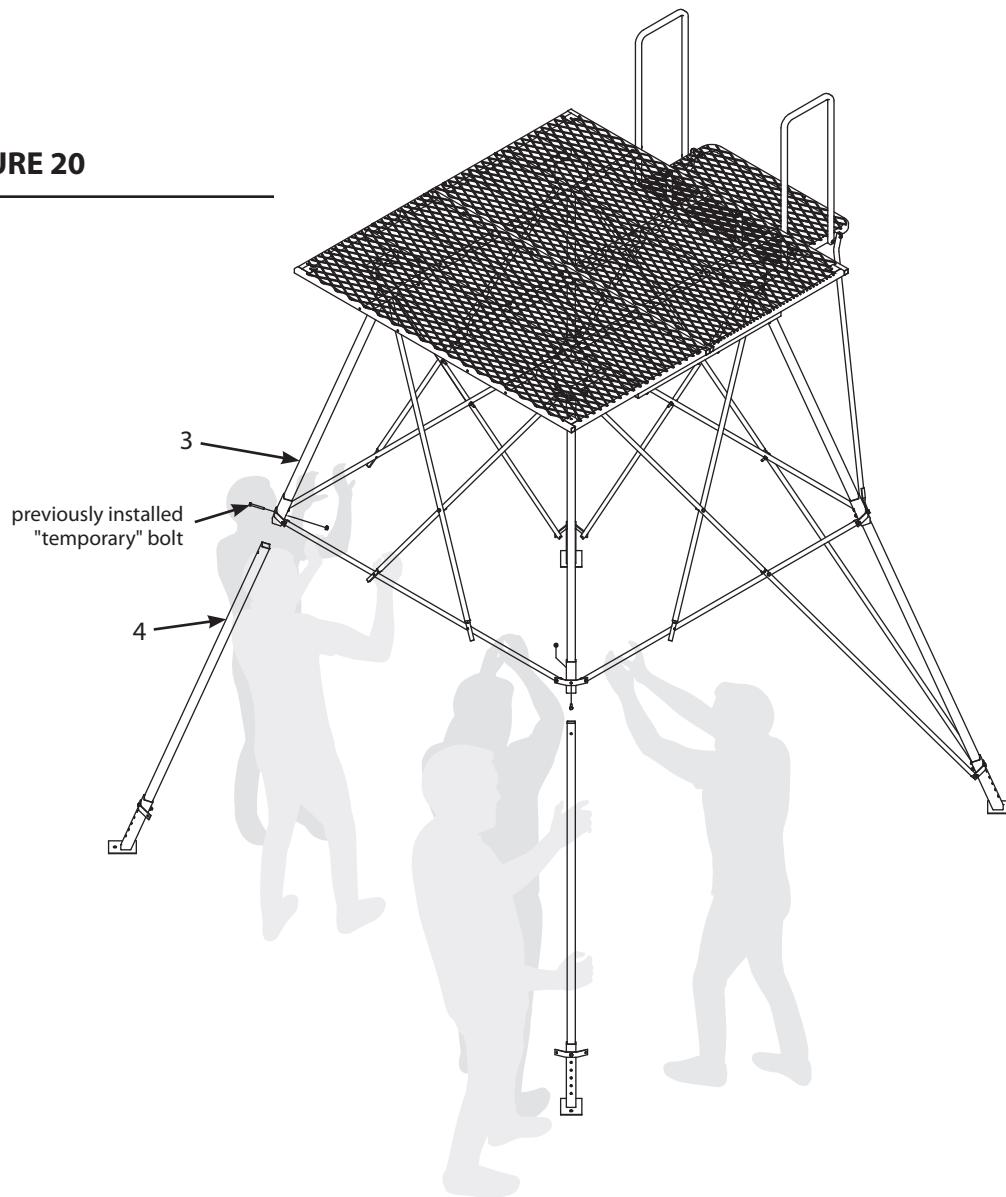


22. On the side with the two attached lower legs (4), insert four upper angled braces (9) into lower angle braces (8) and secure to horizontal cross brace (6) using four M8x45mm bolts (26) and nuts (30). Make sure each bolt passes through all three braces. **SEE FIGURE 18.**

23. Attach lower angle braces (8) to the attachment brackets (5) using four M8x35mm bolts (25) and nuts (30). Tighten all loose hardware securely at this time. **SEE FIGURE 19.**



FIGURE 20



24. With two people in each rear corner (four people total) lift platform end up. Once these four people have the tower balanced securely a fifth person should insert two lower legs (4) into upper legs (3). In order to do this, the fifth person must also remove the previously installed "temporary" bolts and then quickly re-insert them after legs are together. Make sure feet pads are pointing outward. **SEE FIGURES 20.**



FIGURE 21

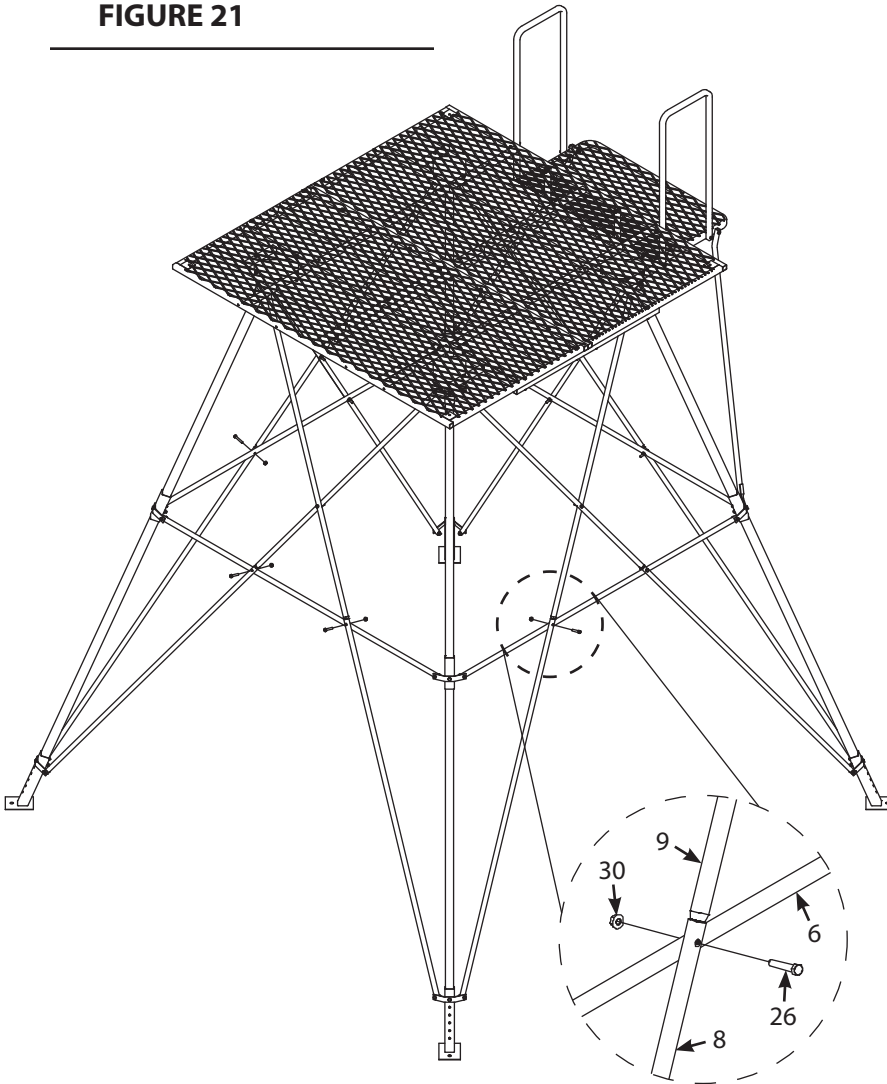
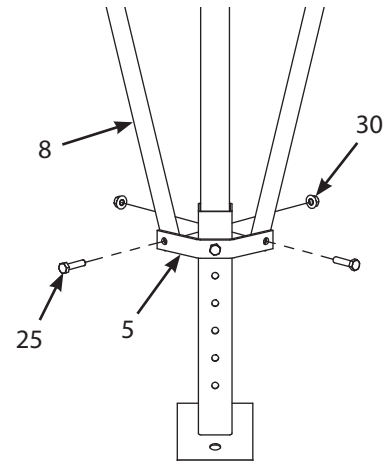


FIGURE 22



25. Insert remaining four upper angle braces (9) into lower angle braces (8) and secure to horizontal cross brace (6) using four M8x45mm bolts (26) and nuts (30). Tighten all loose hardware securely at this time. **SEE FIGURE 21.**

26. Attach all previously assembled lower angle braces (8) to the attachment brackets (5) using four M8x35mm bottles (25) and nuts (30). Tighten all loose hardware securely at this time. **SEE FIGURE 22.**



FIGURE 23

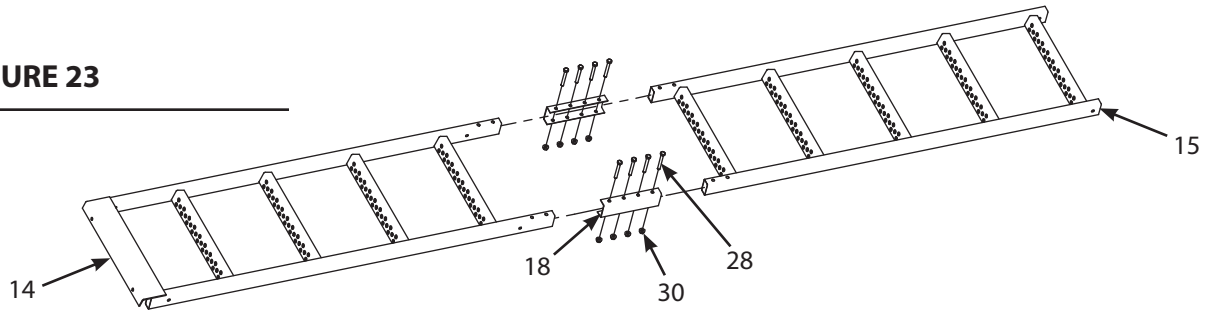


FIGURE 24

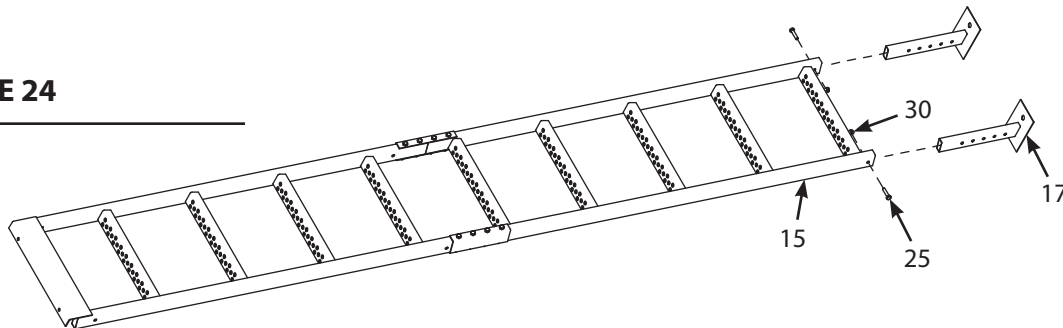
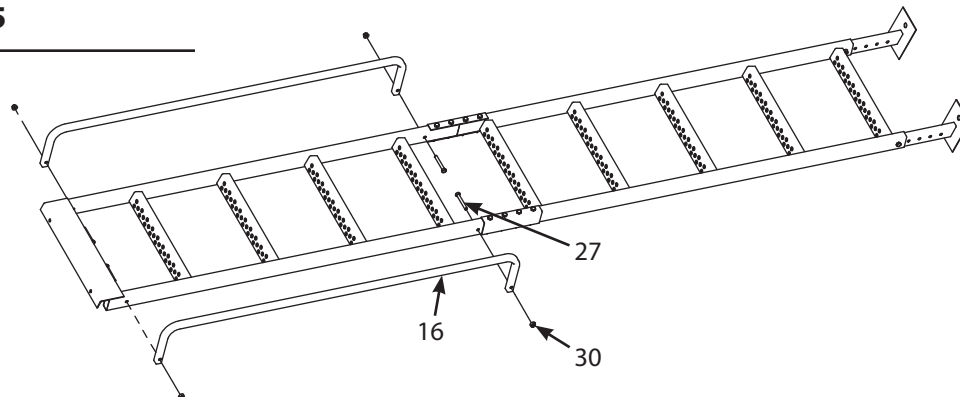


FIGURE 25



27. Using at least four people (one at each leg), carefully pick up assembled tower slightly off ground and move/shift into desired location. Once in position, inspect each foot location to ensure all feet are solidly on ground. If ground is uneven and adjustment in foot height is necessary, remove the nut/bolt on foot/leg/bracket and adjust foot height to proper setting. Once setting is chosen, re-insert the bolt and attach nut. Tighten securely.

NOTE: DO NOT lift tower by cross braces as you could bend or damage them. Lift by legs only.

28. Attach the top ladder (14), bottom ladder (15) and ladder connector brackets (18) together using eight M8x65mm bolts (28) and nuts (30). **SEE FIGURE 23.**

29. Attach two ladder feet (17) by sliding inside bottom ladder (15) and securing using two M8x35mm (25) bolts and nuts (30). Do not tighten nuts and bolts at this time as adjustment in height may be needed later in instructions. **SEE FIGURE 24.**

30. Attach two hand rails (16) to ladder assembly using four M8x60mm bolts (27) and nuts (30). Tighten all loose hardware securely at this time. **SEE FIGURE 25.**



FIGURE 26

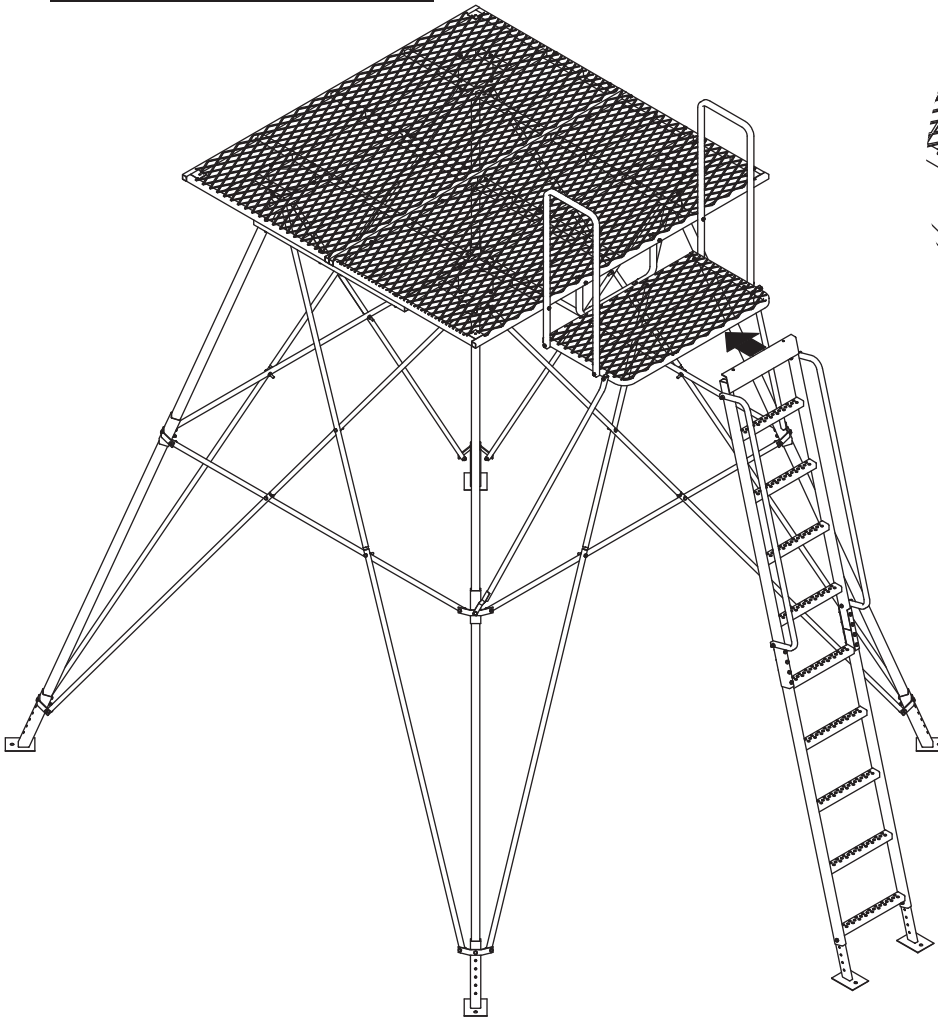
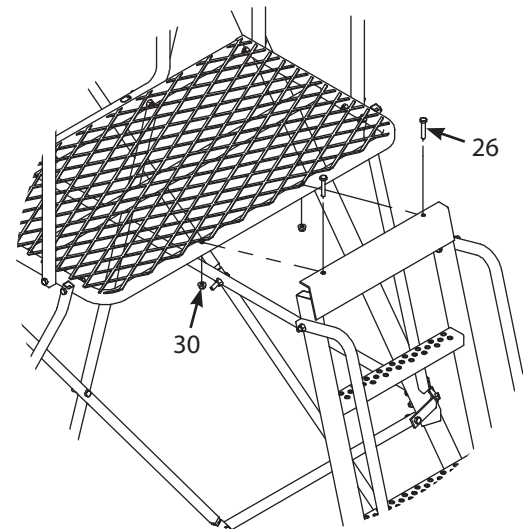


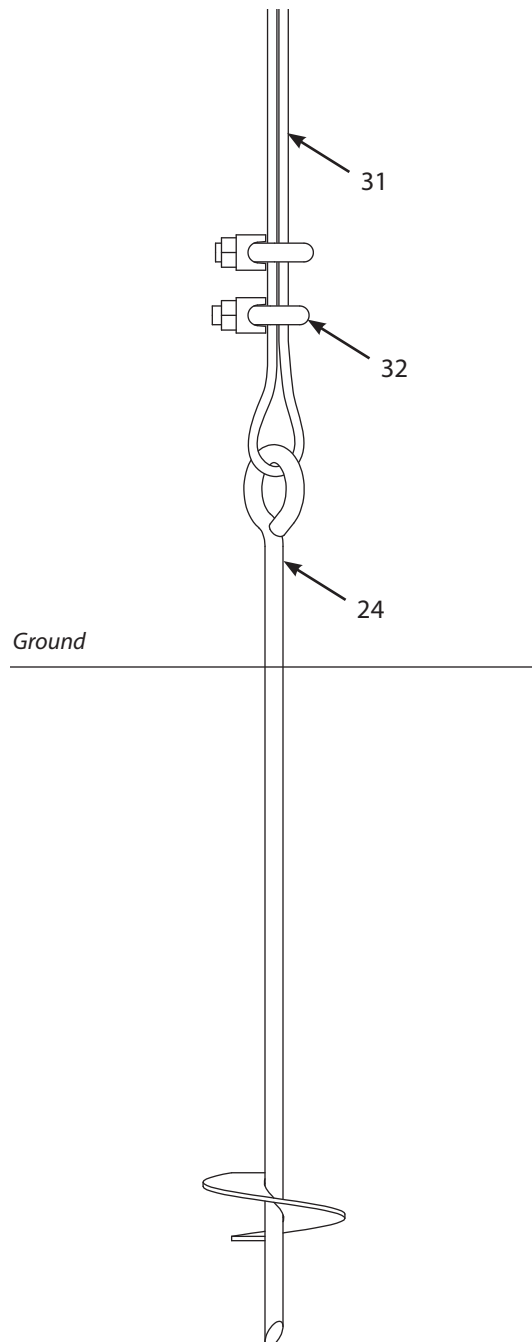
FIGURE 27



31. Take assembled ladder and place lip found on top end and position it on the front edge of entry platform. Determine if the adjustable ladder feet need to be lengthened or shortened. Adjust as necessary and tighten these nuts and bolts securely at this time. **SEE FIGURE 26.**
32. With two people securely holding ladder, a third person must now slowly and carefully climb the ladder using the three point contact climbing method. Do Not climb with anything in your hands, hardware and tools must be in your pockets. Make sure to keep a constant hand grip on the ladder/hand rails at all times. Always lean forward, toward the ladder to keep the top lip against entry platform. Only climb the ladder high enough that you can comfortably reach the top of ladder.
33. While two people continue to hold ladder, secure the top of ladder to entry platform using two M8x45mm bolts (26) and nuts (30). Tighten these nuts and bolts securely at this time. **SEE FIGURE 27.**



FIGURE 28



34. Screw the provided auger (24) into the ground at the center location, directly under center of platform, using one of the ground stakes provided as a "T" handle (through loop in end of auger).

NOTE: Leave approximately 6" of the auger above the ground at this time.

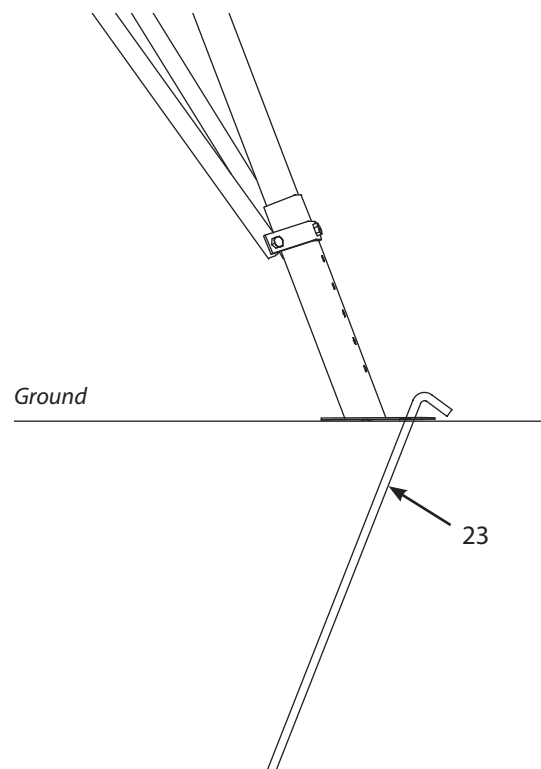
35. Attach cable (31) and two cable clamps (32) to auger (24) by feeding cable through auger loop, pulling up on the cable end so it is tight (no slack) and tighten securely with two cable clamps. **SEE FIGURE 28.**
36. Screw the auger further into the ground until the cable is pulling down tightly on the platform.

NOTE: DO NOT over tighten cable, damage or distortion to the platform may occur.

37. Using a mall, drive the four provided ground stakes (23) at an angle other than perpendicular into the ground (through the ground pads at base of the platform leg feet). **SEE FIGURE 29.**

NOTE: Drive stakes completely into ground so that the head of the stakes rests on the feet ground pads.

FIGURE 29





WARNING

- ▲ Double check assembly steps to be certain you have correctly assembled this product.
- ▲ Study your new stand to become familiar with all of its features and design. Save these instructions for future reference.
- ▲ **Be Sure** assembly area is open, flat, level, and dry with no power lines near!
- ▲ **Always** use at least five (5) people to install or take down a free standing platform.
- ▲ **Do Not** use any type of motorized vehicle to upright/assemble this free standing platform stand. You could cause unnecessary damage to this product. Upright by hand only using five people.
- ▲ Some models include a shooting rail. **Never** lean against, lean over, or sit on shooting rail. It is designed as a shooting rest only. On models that have a non-fixed shooting rail, be sure shooting rail is flipped back or swung to the side when ascending or descending ladder.
- ▲ Periodic tensioning of the cable/auger may be required as stand settles. Check tension each time before using stand.

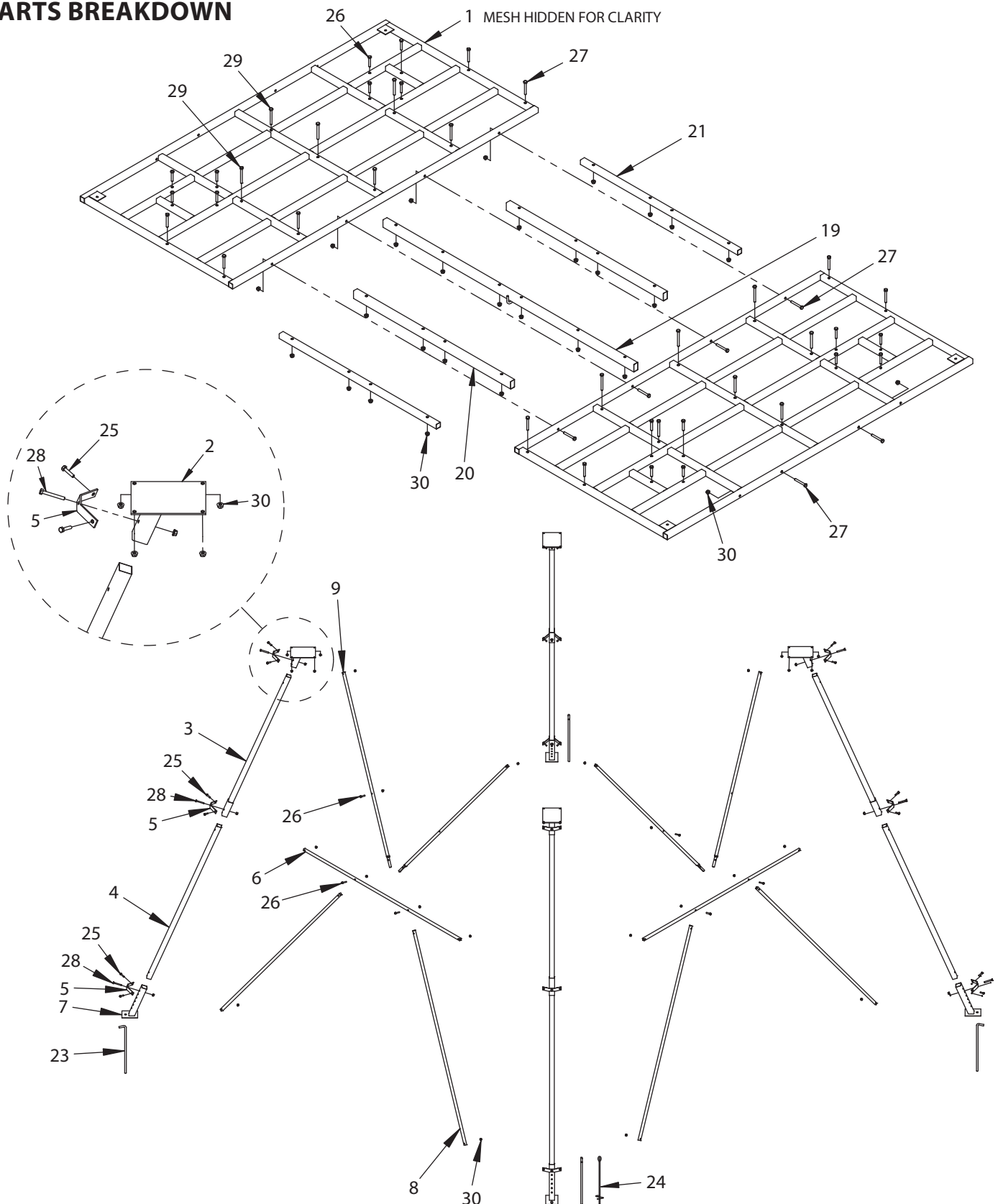


WARNING

- ▲ **Never** have two people on entry platform at the same time.
- ▲ Be sure only one person ascends or descends ladder at a time. The entry platform is part of the ladder. Be certain first person is fully off of the ladder/entry platform and positioned safely on tower platform or ground before second person ascends or descends ladder.
- ▲ **Never** have two people on one side of the platform. Keep weight evenly distributed on platform.
- ▲ **Always** be aware of the other person's position. Use extreme caution when weapons are used to prevent personal injury.
- ▲ **Always** lean forward as you climb ladder or climbing aid.
- ▲ **Always** maintain three (3) points of contact when climbing a ladder treestand or free standing platform stand. Proper three-point contact means having either two feet with one hand or one foot with two hands on the step portion of the ladder or climbing aid at all times.
- ▲ **Always** wear the appropriate footwear when using a free standing platform stand. A good non-slip safety boot is important to your personal safety. Be especially careful that boot laces do not get hooked on the stand or any of its components (tuck shoelaces into boots before climbing).

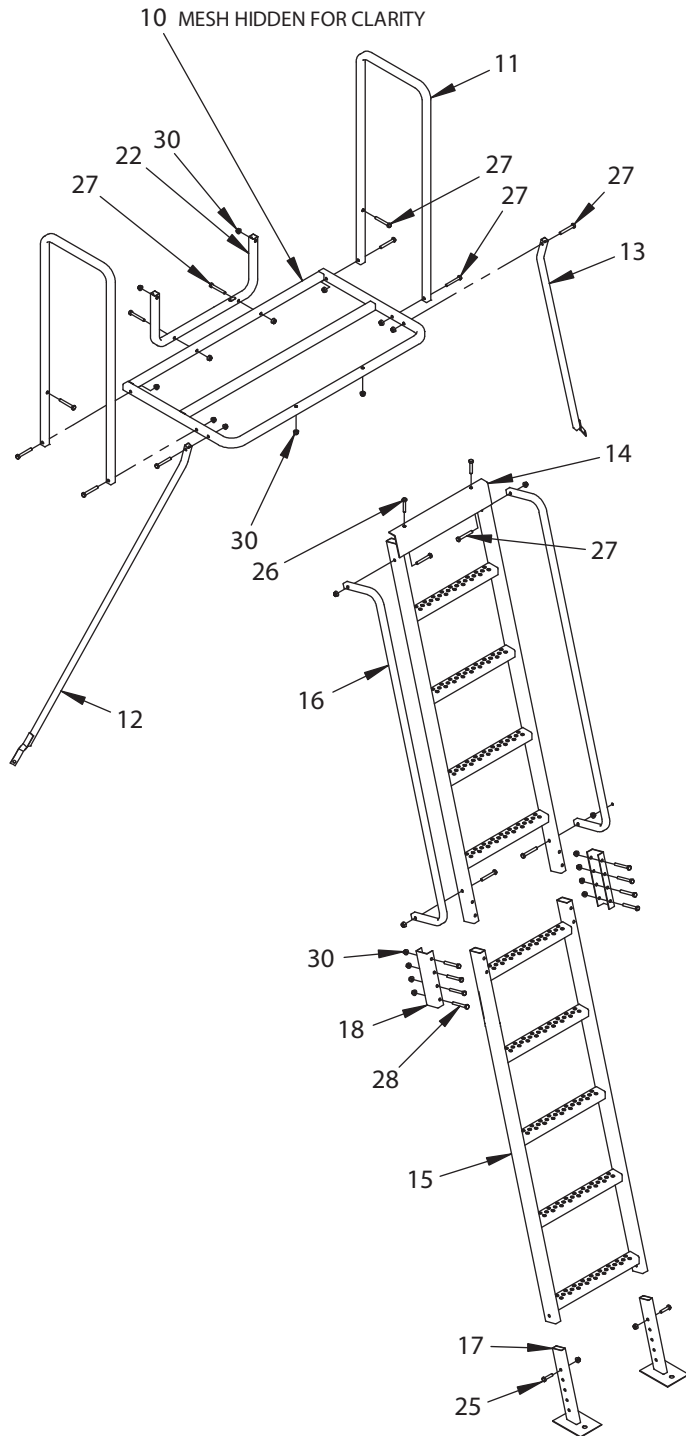


PARTS BREAKDOWN





PARTS BREAKDOWN



PARTS LIST

KEY #	PART #	DESCRIPTION	QTY.
1	24056	PLATFORM	2
2	24049	LEG ATTACHMENT BRACKET	4
3	24046	FTS UPPER LEG	4
4	24045	FTS LOWER LEG	4
5	24041	ATTACHMENT BRACKET BRACE	12
6	24044	FTS CROSS BRACE	4
7	24038	FOOT	4
8	24042	FTS LOWER ANGLED BRACE	8
9	24043	FTS UPPER ANGLED BRACE	8
10	24071	ENTRY PLATFORM	1
11	24073	ENTRY PLATFORM HAND RAIL	2
12	24068	ENTRY PLATFORM BRACE LEFT	1
13	24069	ENTRY PLATFORM BRACE RIGHT	1
14	24062	TOP LADDER SECTION	1
15	24059	BOTTOM LADDER SECTION	1
16	24064	FTS LADDER HAND RAIL	2
17	24040	LADDER FOOT	2
18	24060	LADDER CONNECTOR BRACKET	2
19	24051	PLATFORM CENTER BRACE	1
20	24975	FTS PLATFORM BRACE RECTANGLE	2
21	24050	FTS PLATFORM BRACE	2
22	24072	FTS ENTRY PLATFORM BRACE REAR	1
23	24099	GROUND STAKE 12.7MM X 610MM	4
24	24100	GROUND STAKE AUGER 24 IN	1
25	22551	M8 X 35MM BOLT	26
26	22549	M8 X 45MM BOLT	30
27	22336	M8 X 60MM BOLT	28
28	23564	M8 X 65MM BOLT	20
29	24977	M8 X 75MM BOLT	14
30	22339	M8 NUT	118
ITEMS NOT SHOWN			
31	24103	TIE DOWN CABLE	1
32	48650	1/8 IN CABLE CLAMP	4

LANDMARKTM
PERMANENT BLINDS



LandmarkTM by RETI
1160 Eighth Avenue, PO Box 755
Cumberland, WI 54829
800-450-3343 | Fax 715-822-2124
Email: info@huntriversedge.com