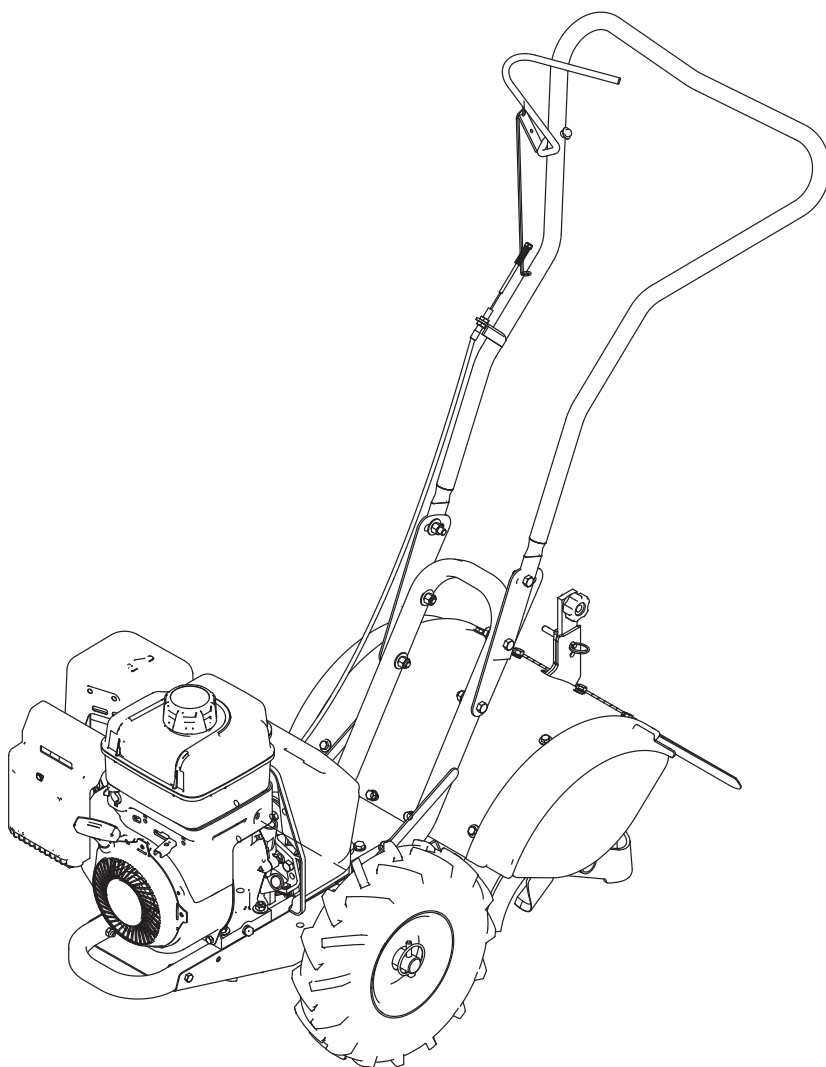




Operator's Manual
Original Operating Instructions

**6015 Series
CRT Rototiller**



Product #'s:

6015B (Shown)

6015BCE

6015V

Get parts online at
www.getearthquake.com



P/N: 13594
ECN: 9543
Rev. 08/22/12
© 2012 Ardisam, Inc.
All Rights Reserved

INTRODUCTION

Congratulations on your investment in quality. Thank you for purchasing a 6015 Series CRT Rototiller from Earthquake™. We have worked to ensure that this tiller meets the highest standards for usability and durability. With proper care, your tiller will provide many years of service.

Please read this entire manual before installation and use. Earthquake reserves the right to change, alter or improve the product and this document at any time without prior notice.

CONTENTS

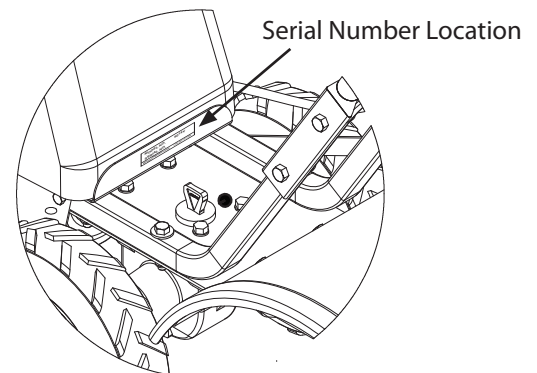
Registration	2
Safety	3-5
Unpacking & Assembly	6-7
Features	8
Operation	9-14
Maintenance	15-18
Troubleshooting	19
Parts.....	20-28
Warranty	30-31

FEDERAL EMISSION INFORMATION

Earthquake warrants to the retail purchaser, that this CRT tiller was designed, built and equipped to conform at the time of initial sale to all applicable regulations of the U.S. Environmental Protection Agency (EPA).

REGISTRATION AND SERVICE

Record the engine model number and serial number in the space provided for easy reference when ordering parts or requesting technical support. Excluding emissions-related warranty items, the warranty is valid only if the completed registration is received by Ardisam within 30 days of purchase. **(SEE WARRANTY SECTION FOR MORE INFORMATION.)** You can register your warranty online by visiting www.getearthquake.com, or by mailing it to: Ardisam, 1160 Eighth Avenue, Cumberland, WI 54829. If you do not have a computer, call our customer service department at (800) 345-6007 Mondays through Fridays from 8 a.m. to 5 p.m. CST.



OWNERSHIP RECORDS		
Owner's Name:		
Owner's Address:		
City:	State/Province:	Zip Code/Postal Code:
Model Number:	Serial Number:	
Date of Purchase:		
Notes:		

This manual may contain information for several models. Read and keep this manual for future reference. This manual contains important information on SAFETY, ASSEMBLY, OPERATION, AND MAINTENANCE. The owner must be certain that all the product information is included with the unit. This information includes the MANUAL, the REPLACEMENT PARTS and the WARRANTIES. This information must be included to make sure state laws and other laws are followed. This manual should remain with the engine even if it is resold.

SAFETY

OWNER'S RESPONSIBILITY

Accurate assembly, and safe and effective use of the rototiller is the owner's responsibility.

- Read and follow all safety instructions.
- Carefully follow all assembly instructions.
- Maintain the tiller according to directions and schedule included in this Earthquake operator's manual.
- Ensure that anyone who uses the tiller is familiar with all controls and safety precautions.

SPECIAL MESSAGES

Your manual contains special messages to bring attention to potential safety concerns, machine damage as well as helpful operating and servicing information. Please read all the information carefully to avoid injury and machine damage.

NOTE: *General information is given throughout the manual that may help the operator in the operation or service of the machine.*

IMPORTANT SAFETY PRECAUTIONS

Please read this section carefully. Operate the tiller according to the safety instructions and recommendations outlined here and inserted throughout the text. Anyone who uses this tiller must read the instructions and be familiar with the controls. Your tiller is equipped with a safety device that enables you to stop the wheels and tines quickly in an emergency. Learn how the drive safety control lever operates and how to control the tiller at all times.



This symbol points out important safety instructions which if not followed could endanger your personal safety. Read and follow all instructions in this manual before attempting to operate this equipment.

- Do not allow children to operate this rototiller. Keep small children away from the area being tilled. Do not allow adults to operate the tiller without proper instruction.

PREPARATION

- Dress appropriately when operating the tiller. Always wear sturdy footwear. Never wear sandals, sneakers or open shoes, and never operate the tiller with bare feet. Do not wear loose clothing that might get caught in moving parts.
- Carefully inspect the area to be tilled and remove all foreign objects. Do not till above underground water lines, gas lines, electric cables, or pipes. Do not operate the tiller in soil with large rocks and foreign objects which can damage the equipment.
- Leave control lever in the neutral position before starting the engine.

DANGER

DANGER INDICATES A SERIOUS INJURY OR FATALITY WILL RESULT IF THE SAFETY INSTRUCTIONS THAT FOLLOW THIS SIGNAL WORD ARE NOT OBEYED.

WARNING

WARNING INDICATES A SERIOUS INJURY OR FATALITY COULD RESULT IF THE SAFETY INSTRUCTIONS THAT FOLLOW THIS SIGNAL WORD ARE NOT OBEYED.

CAUTION

CAUTION INDICATES YOU CAN OR YOUR EQUIPMENT CAN BE HURT IF THE SAFETY INSTRUCTIONS THAT FOLLOW THIS SIGNAL WORD ARE NOT OBEYED.

IMPORTANT

IMPORTANT INDICATES HELPFUL INFORMATION FOR PROPER ASSEMBLY, OPERATION, OR MAINTENANCE OF YOUR EQUIPMENT.

WARNING

YOU MUST READ, UNDERSTAND AND COMPLY WITH ALL SAFETY AND OPERATING INSTRUCTIONS IN THIS MANUAL BEFORE ATTEMPTING TO SETUP AND OPERATE YOUR ROTOTILLER.

FAILURE TO COMPLY WITH ALL SAFETY AND OPERATING INSTRUCTIONS CAN RESULT IN LOSS OF MACHINE CONTROL, SERIOUS PERSONAL INJURY TO YOU AND/OR BYSTANDERS, AND RISK OF EQUIPMENT AND PROPERTY DAMAGE. THE TRIANGLE IN THE TEXT SIGNIFIES IMPORTANT CAUTIONS OR WARNINGS WHICH MUST BE FOLLOWED.

CALIFORNIA PROPOSITION 65 WARNING

ENGINE EXHAUST FROM THIS PRODUCT CONTAINS CHEMICALS KNOWN TO THE STATE OF CALIFORNIA TO CAUSE CANCER, BIRTH DEFECTS, OR OTHER REPRODUCTIVE HARM.

- Handle fuel with care; it is highly flammable.
 - a. Use an approved fuel container.
 - b. Never add fuel to a running engine or hot engine.
 - c. Fill fuel tank outdoors with extreme care. Never fill fuel tank indoors.
 - d. Replace gasoline cap securely and clean up spilled fuel before restarting.
- Never attempt to make any adjustments while the engine is running.

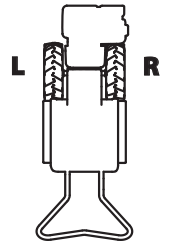
OPERATION

- Never operate the tiller without guards, covers and hoods in place.
- Never start the engine or operate the tiller with the wheels in the free-wheel position. Make sure the wheel lock pins are engaged through the wheel hubs and wheel axle. The wheels act as a brake to keep the tiller at a controlled speed. Disengage wheel lock pins to permit free-wheeling only when engine is stopped.
- Keep hands, feet and clothing away from rotating parts. Keep clear of tiller tines at all times.
- Tines and wheels rotate when the drive safety control lever is pulled toward the handlebar (**FORWARD** position). Releasing the drive safety control lever to the **NEUTRAL** position stops the wheels and tines. If the unit does not stop when the lever is in the **NEUTRAL** position an adjustment of the drive control linkage, the belt alignment or the belt guides is required.
- Use extreme caution when operating on or crossing gravel drives, walks or roads. Stay alert for hidden hazards or traffic.
- After striking a foreign object, stop the engine, remove the wire from the spark plug, thoroughly inspect the tiller for any damage and repair the damage before restarting and operating the tiller.
- If vegetation clogs the tines **STOP THE ENGINE AND DISCONNECT THE SPARK PLUG WIRE** before removing vegetation by hand.
- Engine muffler will be hot from operation. Do not touch it with bare skin or a severe burn may result.
- If the unit should start to vibrate abnormally, stop the engine and check immediately for the cause. Vibration is generally a warning of trouble.
- Do not run the engine indoors; exhaust fumes are deadly.
- Do not overload the machine capacity by attempting to till too deep at too fast a rate.
- Never operate the machine at high transport speeds on slippery surfaces. Look behind and use care when backing.
- Never allow bystanders near the unit.
- Use only attachments and accessories approved by the manufacturer of the tiller.
- Never operate the tiller without good visibility or light.
- Be careful when tilling in hard ground. The tines may catch in the ground and propel the tiller backward. If this occurs, let go of the handlebars and do not restrain the machine.
- Take all possible precautions when leaving the machine unattended. Disengage all control levers, stop the engine,

IMPORTANT

THE RIGHT AND LEFT SIDES OF YOUR ROTOTILLER ARE DETERMINED FROM THE OPERATING POSITION AS YOU FACE THE DIRECTION OF FORWARD TRAVEL.

ENGINE IS SHIPPED FROM FACTORY WITHOUT OIL. YOU MUST ADD ENGINE OIL BEFORE STARTING ENGINE.



IMPORTANT

NEVER START THE ENGINE OR OPERATE THE TILLER WITH THE WHEELS IN THE FREE-WHEEL POSITION. MAKE SURE THE WHEEL LOCK PINS ARE ENGAGED THROUGH THE WHEEL HUBS AND WHEEL AXLE. THE WHEELS ACT AS A BRAKE TO KEEP THE TILLER AT A CONTROLLED SPEED. DISENGAGE WHEEL LOCK PINS TO PERMIT FREE-WHEELING ONLY WHEN ENGINE IS STOPPED.

wait for all moving parts to stop and make certain guards and shields are in place.

- When leaving the operating position for any reason:
 - shut off the engine.
 - wait for all moving parts to stop.

MAINTENANCE AND STORAGE

- Keep machine, attachments and accessories in safe working condition.
- Check shear bolts, engine mounting bolts and other bolts at frequent intervals for proper tightness to be sure the equipment is in safe working condition.
- To prevent accidental starting, always disconnect and secure the spark plug wire from the spark plug before performing tiller maintenance.
- Never run the engine indoors. Exhaust fumes are deadly.
- Always allow muffler to cool before filling fuel tank.
- Never store equipment with gasoline in the tank inside of a closed building where fumes may reach an open flame or spark. Allow the engine to cool before storing in any building.
- Always refer to the operator's guide instructions for important details if the tiller is to be stored for an extended period.
- Add a fuel stabilizer to gas tank and run for 10-15 minutes to prevent fuel from gumming up during an extended storage period.

SAFETY DECALS

This rototiller unit has been designed and manufactured to provide you with the safety and reliability you would expect from an industry leader in outdoor power equipment manufacturing.

Although reading this manual and the safety instructions it contains will provide you with the necessary basic knowledge to operate this equipment safely and effectively, we have placed several safety labels on the tiller to remind you of this important information while you are operating the unit.

These important safety labels are illustrated below, and are shown here to help familiarize you with the location and content of the safety messages you will see as you perform normal tilling operations. Please, review these decals now, and if you have any questions regarding their meaning or how to comply with these instructions, reread the complete safety instruction text in this manual. For additional questions European customers may contact their local dealer and US customers must call Earthquake customer service.

Should a decal become unreadable because of being worn, faded, or otherwise damaged during the use of your powerhead, use the part number information provided to order a replacement label. European customers can order from their local authorized dealer and US customers can order online or by calling Earthquake customer service.

The safety labels are easily applied, and will act as a constant visual reminder to you and others who may use the equipment. Follow the safety instructions necessary for safe, effective operation of your rototiller.

ADDITIONAL SAFETY INFORMATION (CE UNITS ONLY)

This rototiller unit has been tested and verified to be within the acceptable level of noise range for CE compliance at 80dB Lpa.

This rototiller unit has been tested and verified to be within the acceptable level of vibration for CE compliance at 6.2 m/s².

For the health and safety of the consumer it is recommended that this product be used for no more than two consecutive hours in any given 12 hour period.

<p>⚠ WARNING</p> <p>AVOID SERIOUS INJURY</p> <p>Read operator's manual(s). Know the location and function of all controls. Keep all shields and guards in place and working while running. Never operate tiller when children are around. Dress appropriately and wear sturdy footwear. Carefully inspect area to be tilled -- remove large rocks and other foreign objects. DO NOT till above underground electric, water, gas, or other utility lines and pipes. STOP THE ENGINE AND DISCONNECT THE SPARK PLUG WIRE before removing debris or servicing unit. When leaving the operating position for any reason: - shut off the engine - wait for all moving parts to stop</p>	<p>⚠ WARNING</p> <p>LOCK-IN WHEELS</p> <p>Never start or operate tiller with wheels in the Free-Wheel position. Make sure wheel lockouts are engaged through wheel hubs and axle. To operate, tiller wheels must be locked in. Disengage wheel lockouts ONLY when engine is stopped.</p> <p>OPERATION</p> <p>REFER TO OPERATOR'S MANUAL FOR DETAILED OPERATING INSTRUCTIONS TO START:</p> <ol style="list-style-type: none"> 1. Release drive control levers to neutral position. 2. Lower the drag bar so that tines do not touch the ground. 3. Check position of wheels and wheel lockouts. 4. Slide choke control to choke position. 5. Move throttle control lever to fast position. 6. Pull starter rope.
---	--

Part No. LBL516AA
WARNING INSTRUCTIONS
Hood Decal

⚠ WARNING!

DO NOT START ENGINE UNLESS BELT COVER IS ATTACHED. KEEP HANDS, FEET, AND CLOTHING AWAY FROM MOVING BELTS AND PULLEYS. FAILURE TO COMPLY COULD RESULT IN INJURY. SEE OWNER'S MANUAL FOR FULL SAFETY INSTRUCTIONS.

Part No. LBL516C
WARNING
Belt Cover Decal

LWA

80

dB

Part No. LBLCENOISE80
Decibel Level Decal

⚠ DANGER




AVOID INJURY FROM ROTATING TINES!

Keep hands, feet, and clothing away.

- Tines rotate when tiller is engaged in forward or reverse.
- Tines and wheels rotate when drive control levers are pulled toward the handle bar. Do not operate both drive control levers at the same time.
- In reverse, tines and wheels rotate when the reverse control lever is pulled up
- Releasing the drive control levers to the neutral position stops the wheels and tines.


Part No. LBL516J
TINES DANGER
Hood Flap Decal

ARDISAM, INC. 
1160 8th Avenue | Cumberland, WI 54829 | USA

Serial No. _____

Earthquake 6015BCE Rear Tine Tiller
Year: **2010** Mass: **67 kg**
Max. Eng. Operating Speed: **3600 rpm**
Nominal Power Rating: **3.61 kW**

Part No. LBLINFO6015BCE
Name Plate
Tine Shield Decal

ARDISAM, INC. 
1160 8th Avenue | Cumberland, WI 54829 | USA

Serial No. _____

Earthquake 6015VCE Rear Tine Tiller
Year: **2010** Mass: **65.6 kg**
Max. Eng. Operating Speed: **3600 rpm**
Nominal Power Rating: **4.476 kW**

Part No. LBLINFO6015VCE
Name Plate
Tine Shield Decal

UNPACKING AND ASSEMBLY

Your rototiller comes fully assembled except for a few parts. The following instructions will help you unpack your tiller and assemble and adjust your tiller's depth regulator lever, cable tension and handlebar height. You will need 2- 9/16" wrenches.

UNPACK

1. Open top of carton and remove handlebar assembly.
2. Find parts packet. Parts packet contains:
 - 2 - 3/8-16 x 1" hex head bolts*
 - 4 - 3/8-16 x 1-3/4" hex head bolts
 - 6 - 1/4-20 x 3/4" hex head bolts
 - 6 - 1/4-20 nylock nuts
 - 6 - 3/8-16 nylock nuts**
 - 1- detent pin
 - 12 - 1/4" flat washers
 - 6 - 3/8" flat washers***
 - 2- Handlebar extensions (part# 13285)
 - 2- Handlebar extensions (part# 31329)***

NOTE: Parts packet also includes Engine Manual, Warranty Card and this Operator's Manual.

3. Cut open seams of carton, exposing all contents and remove machine by:
 - a. Attaching loose wheels in box onto machine with lock pin in free-wheel position. (SEE PAGE 12)
 - b. Roll tiller from carton.

* CE (European Version) includes (4) 3/8-16 x 1 hex head bolts

** CE includes (8) 3/8"-16 nylock nuts and (8) 3/8" flat washers

*** Only CE model includes second set of handlebar extensions

ATTACH HANDLEBAR (6015V AND 6015B, U.S.)

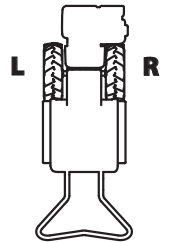
1. Locate handlebar extensions. (SEE FIGURE 1)
2. Place handlebar extensions on outside of lower handlebar mount. Line up the handlebar extension pieces with the lower handlebar mount as shown in the decal located on the lower handlebar mount next to the mounting location. (SEE PAGE 20)
3. Insert one 3/8-16 x 1 3/4" bolt for each side in lower holes of the extension pieces. The bolts will pass through the lower hole of the lower handlebar mount. Put 3/8" flat washers onto bolts.
4. Hand tighten 3/8-16 nuts on each bolt.
5. Now assemble the handlebar to the handlebar extensions. Note: Handlebar goes to the outside of the handlebar extensions.
6. Insert one 3/8-16 x 1-3/4" bolt for each side in lower holes of the handlebar. Note: Bolts will be going through the upper holes of the lower handlebar mount along with the middle holes of the extensions. Put 3/8" flat washers onto bolts.

IMPORTANT

THE RIGHT AND LEFT SIDES OF YOUR ROTOTILLER ARE DETERMINED FROM THE OPERATING POSITION AS YOU FACE THE DIRECTION OF FORWARD TRAVEL.

ENGINE IS SHIPPED FROM FACTORY WITHOUT OIL. YOU MUST ADD ENGINE OIL BEFORE STARTING ENGINE.

TILLER TRANSMISSION IS SHIPPED FROM FACTORY WITH THE PROPER AMOUNT OF GEAR LUBE.



CAUTION

DO NOT TRY TO LIFT THE ROTOTILLER FROM THE CARTON.

DO NOT ADD ENGINE OIL INTO GEAR CASE DIPSTICK HOLE.

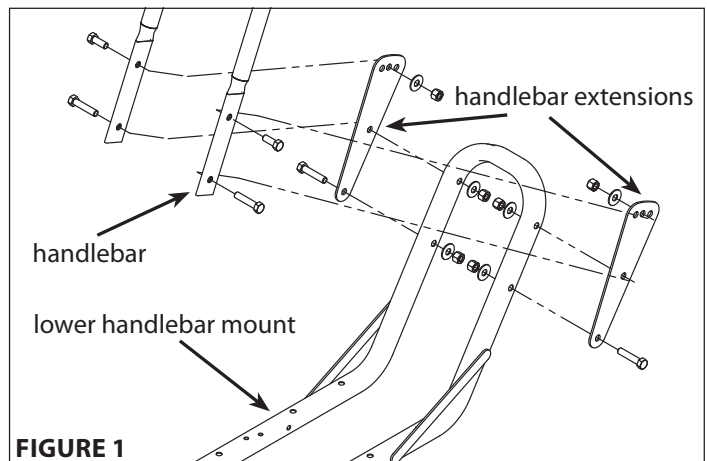


FIGURE 1

7. Hand tighten 3/8-16 nuts on each bolt.
8. Insert one 3/8-16 x 1 bolt for each side in upper holes of the handlebar. Bolts will pass through upper holes of the extensions. Put 3/8" flat washers onto bolts.
9. Hand tighten 3/8-16 nuts on each bolt.
10. Tighten 3/8-16 nuts on each of the 6 bolts connecting the handlebar, handlebar extensions and handlebar mount together.

ATTACH HANDLEBAR (6015BCE, EUROPE)

1. Locate handlebar extensions. (SEE FIGURE 2)
2. Place handlebar extensions on outside of lower handlebar mount. Line up the handlebar extension pieces with the lower handlebar mount as shown in the decal located on the lower handlebar mount next to the mounting location. (SEE PAGE 21)
3. Insert one 3/8-16 x 1 3/4" bolt for each side in lower holes. Put 3/8" flat washers onto bolts.
4. Start 3/8-16 nuts on each bolt.
5. Insert one 3/8-16 x 1-3/4 bolt for each side in upper holes. Put 3/8" flat washers onto bolts.
6. Start 3/8-16 nuts on each bolt.
7. Tighten 3/8-16 nuts on each of the 4 bolts connecting the handlebar extensions to the lower handlebar.
8. Handlebar extensions should now be securely assembled to the lower handlebar mount.
9. Now assemble the handlebar to the handlebar extensions. Note: Handlebar goes to the outside of the handlebar extensions.
10. Insert one 3/8-16 x 1 bolt for each side in lower holes.
11. Start 3/8-16 nuts on each bolt.
12. Insert one 3/8-16 x 1 bolt for each side in upper holes.
13. Start 3/8-16 nuts on each bolt.
14. Tighten 3/8-16 nuts on each of the 4 bolts connecting the handlebar to the handlebar extension.

NOTE: Handlebar extensions 13285 and 31329 can be used together on European models.

ATTACH TINE SIDE SHIELDS

1. Locate side shields. (SEE PAGE 26)
2. Take one side shield, raise it up against one side of the tine guard and hold in place.
3. Place a 1/4" flat washer onto three 1/4-20 x 3/4" bolts. Insert these three bolts in each of the three holes of the tine guard, making sure they also pass through the side shield. Put an additional 1/4" flat washers onto the underside of the bolts.

NOTE: The side shield needs to be below the tine hood when they are attached together.

4. Hand tighten 1/4-20 nuts on each bolt.
5. Tighten 1/4-20 nuts on each of the three bolts connecting the two side shields to the tine guard.
6. Repeat steps 2-4 for the second side shield.

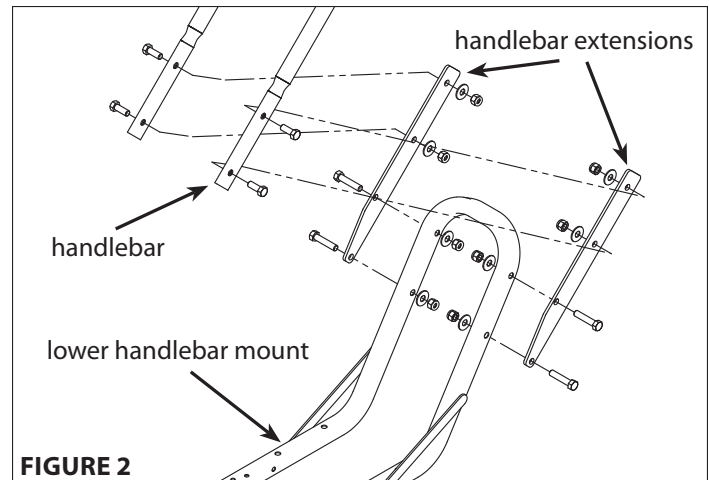
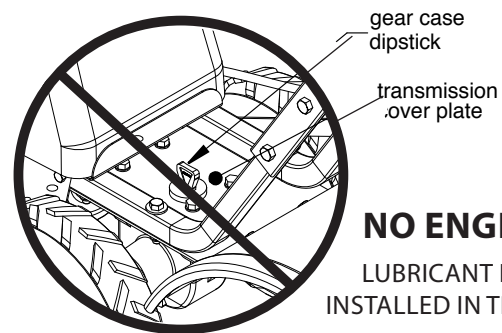


FIGURE 2

IMPORTANT

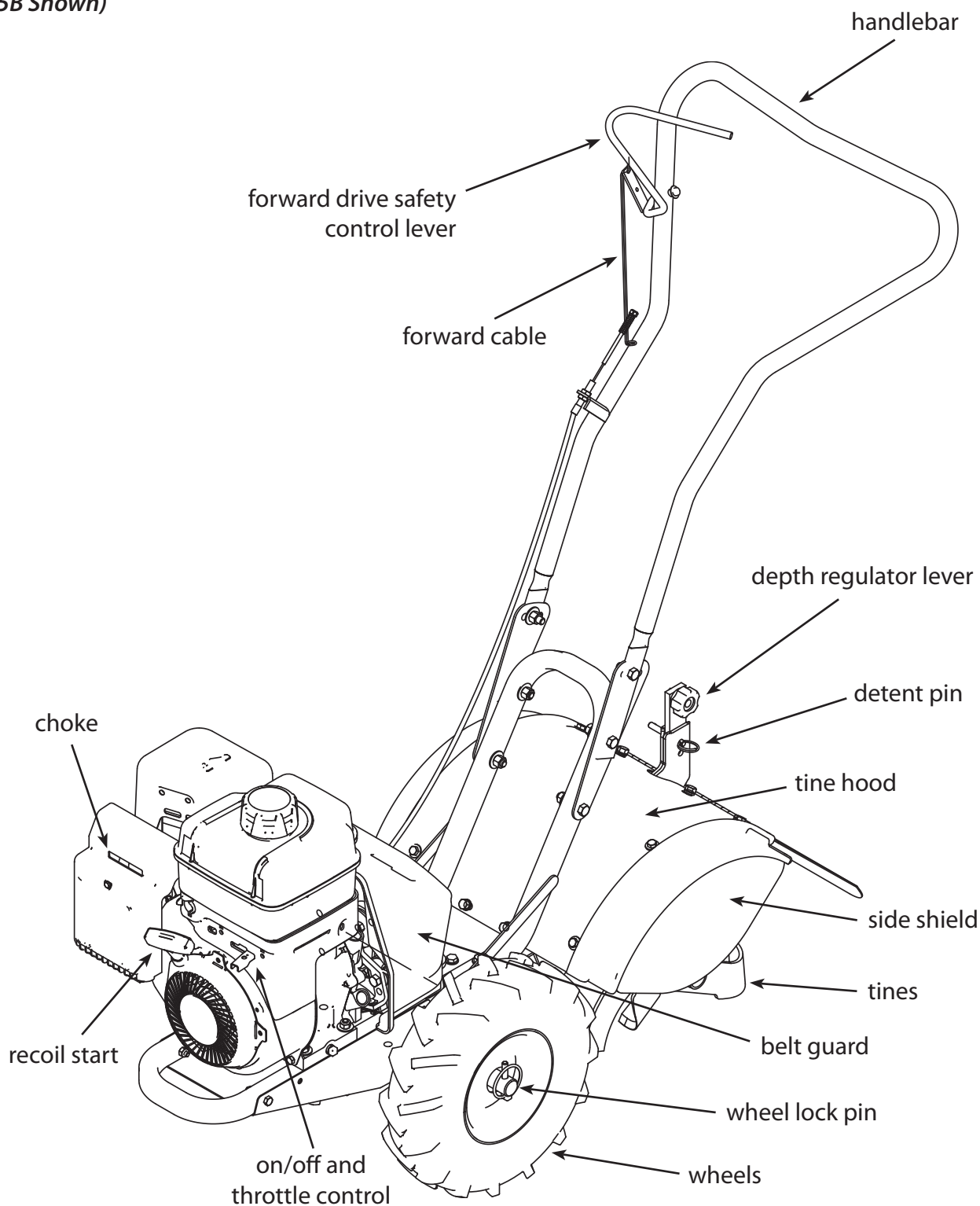


FILL ENGINE CRANKCASE

1. Add oil according to engine manual. **Do not overfill.** Use a clean, high quality detergent oil. Use no special additives with recommended oils. **Do not mix oil with gasoline.** Oil level must be full. Check the oil level by removing oil fill plug. Oil level should be up to the bottom of the fill plug opening.
2. Always check oil level before starting engine. Refer to engine manual for capacity and type of oil to use.

FEATURES

(6015B Shown)



OPERATION

PRE-START INSPECTION

1. Make sure all safety guards are in place and all nuts and bolts are secure.
2. Check oil level in engine crankcase. See your engine manual for procedure and specifications.
3. Inspect air cleaner for cleanliness. See your engine manual for procedure.
4. Check the fuel supply. Fill the fuel tank no closer than 1 inch from top of tank to provide space for expansion. See your engine manual for fuel recommendations.
5. Be sure spark plug wire is attached and spark plug is tightened securely.
6. Check position of wheels and wheel lock pins.
7. Check depth regulator lever position.
8. Examine underneath and around engine for signs of oil or fuel leaks.
9. Inspect fuel hoses for tightness and fuel seepage.
10. Look for signs of engine damage.
11. Remove excessive debris from muffler area and recoil starter.

CAUTION

PLEASE DO NOT START YOUR TILLER UNTIL YOU HAVE READ THE MANUAL THAT CAME WITH YOUR ENGINE, AND THE SECTIONS IN THIS MANUAL TITLED CONTROLS, ADJUSTMENTS AND SAFETY. IF YOU HAVE READ THESE, FOLLOW THE STEPS BELOW TO START YOUR TILLER. ALWAYS PERFORM THIS PRE-START CHECKLIST BEFORE STARTING THE ENGINE.

WARNING

GASOLINE IS HIGHLY FLAMMABLE AND MUST BE HANDLED WITH CARE. NEVER FILL THE TANK WHEN THE ENGINE IS HOT OR RUNNING. ALWAYS MOVE OUTDOORS TO FILL THE TANK.

WHEELS MUST ALWAYS BE LOCKED IN THE TILLING POSITION WHEN ENGINE IS RUNNING. DO NOT OPERATE THE TILLER WITH THE WHEEL LOCKOUTS UNLOCKED. ALWAYS SET THE WHEELS IN TILLING POSITION BEFORE STARTING ENGINE.

ALWAYS PUT THE DEPTH REGULATOR LEVER IN THE TRANSPORT POSITION BEFORE STARTING ENGINE. TINES SHOULD CLEAR THE GROUND.

IMPORTANT

ENGINE IS SHIPPED FROM FACTORY WITHOUT OIL. YOU MUST ADD ENGINE OIL BEFORE STARTING ENGINE.

START-UP

The controls required to start and run the rototiller are located on the engine and are the choke and throttle levers. The choke lever is marked on one end with **CHOKE** and on the other with **RUN**. The throttle lever is marked on one end with a **STOP** icon and on the other with a **FAST** icon. There is also a **SLOW** icon next to **STOP** to indicate a low throttle position.

NOTE: The 6015V does not have the stop function on the throttle lever and instead has an ON/OFF switch located near the recoil start.

A more detailed description of engine operation and all related precautions and procedures can be found in the engine manufacturer's manual that accompanies each tiller.

COLD STARTS

1. Turn ON/OFF switch to the **ON** position, if equipped.
2. Move choke lever to **CHOKE** position.
3. Move throttle lever to half way between **SLOW** and **FAST**.
4. Pull starting rope out slowly one time and allow to return normally.
5. Pull starting rope out rapidly, and allow rope to return normally.
6. When engine starts, gradually move choke lever to **RUN** position and move throttle lever to **FAST** position for tilling.

RESTARTING A WARM ENGINE

Restarting an engine that is already warm from previous running does not normally require use of the choke.

1. Move throttle lever to half way between **SLOW** and **FAST**.
2. Pull starting rope out rapidly, and allow rope to return normally. Repeat until engine starts.
3. Adjust throttle speed to **FAST** position for tilling.

DANGER

ALWAYS KEEP HANDS AND FEET CLEAR OF ROTATING MACHINE PARTS.

IMPORTANT



STOP



SLOW



FAST

IDLE SPEED

Use the **SLOW** position or a position between **SLOW** and **FAST** on the throttle lever to reduce stress on the engine when tilling is not being performed. Lowering the engine speed to "idle" will help extend the life of the motor, as well as conserve fuel and reduce the noise level of the equipment.

OPERATING SPEED

For tilling, set the throttle lever to **FAST** position.

DRIVE SAFETY CONTROL LEVER

Pull the drive safety control lever toward the handlebar to the **FORWARD** position to engage the wheels and tines. Releasing the lever into the **NEUTRAL** position stops the wheels and tines and brings the tiller to a complete stop. (SEE FIGURE 3)

TILLING

1. Adjust the depth regulator lever to desired tilling depth.

NOTE: Raise depth regulator lever up one hole at a time, testing tiller operation after each raise. Raising depth regulator lever too high can result in loss of control of tiller!

2. Move the throttle control to **FAST** position.
3. Place the tiller in **FORWARD** by pulling the drive safety control lever toward the handlebar, this will engage the wheels and tines.

NOTE: You can slow the tiller's forward advance at any time by putting downward pressure on the handlebars. You can stop the tiller by releasing the drive safety control levers to the **NEUTRAL** position.

SHUTTING DOWN

To stop the engine at any time, move throttle lever to **STOP** position. To stop wheels and tines at any time release drive safety control levers to **NEUTRAL** position. (SEE FIGURE 3)

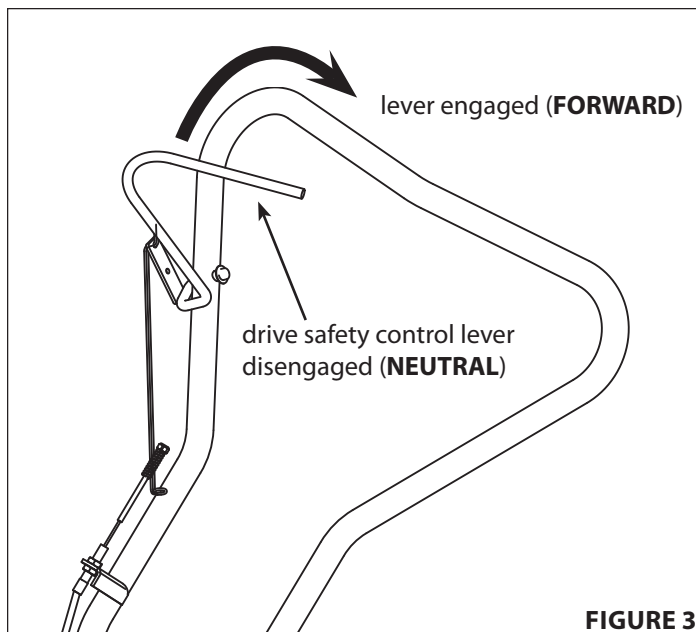


FIGURE 3

⚠ WARNING

TEMPERATURE OF MUFFLER AND NEARBY AREAS MAY EXCEED 150° F. AVOID THESE AREAS.

DO NOT MOVE CHOKE CONTROL TO CHOKE TO STOP ENGINE. BACKFIRE OR ENGINE DAMAGE MAY OCCUR.

TO STOP WHEELS AND TINES AT ANY TIME, RELEASE DRIVE SAFETY CONTROL LEVERS TO NEUTRAL POSITION.

ALWAYS RELEASE DRIVE SAFETY CONTROL LEVERS TO NEUTRAL POSITION BEFORE ADJUSTING THE DEPTH OF THE REGULATOR LEVER.

⚠ DANGER

ENGINE AND SURROUNDING PARTS BECOME EXTREMELY HOT DURING NORMAL USE AND WILL CAUSE SERIOUS BURN INJURIES IF TOUCHED BEFORE THE ENGINE HAS COOLED.

ALLOW ENGINE TO COOL COMPLETELY BEFORE TOUCHING THESE HOT SURFACES.

IMPORTANT

PRACTICE OPERATING THE CONTROLS AND TILLER WITH TINES OUT OF GROUND BEFORE BEGINNING TO TILL. IT IS IMPORTANT THAT YOU KNOW HOW TO USE THE TILLER PROPERLY, KEEP CONTROL AT ALL TIMES, STOP THE TINES AND WHEELS FROM TURNING, AND STOP THE ENGINE IF NECESSARY. IF YOU DO NOT KNOW HOW TO DO THESE THINGS, READ THE CONTROLS, ADJUSTMENTS AND SAFETY SECTIONS BEFORE PROCEEDING.

WHEEL LOCK PINS

To place wheels in free-wheel position:

This allows wheels to turn freely on the axle for easy transportation.

1. Remove lock pin. Slide wheel inward toward machine.
(SEE FIGURE 4)
2. Insert lock pin through the axle hole only, fold lock ring to secure pin to axle.
3. Repeat for other wheel.

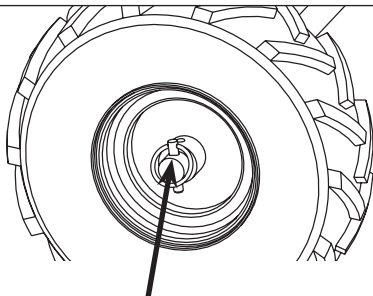
Place wheels in tilling position:

This locks wheels to the axle so they are able to propel the machine forward while in use.

1. Remove lock pin. Slide wheel slightly outward away from machine. Align hole in axle with hole in wheel hub.
(SEE FIGURE 5)
2. Insert lock pin through both holes, fold lock pin ring to secure pin to axle.
3. Repeat for other wheel.

NOTE: Always have both wheel lock pins in or out. Do not operate tiller with only one wheel locked.

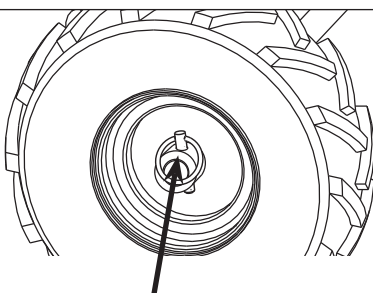
Free-Wheel Position



Wheel lock pin in free-wheel position.
(axle hole only)

FIGURE 4

Tilling Position



Wheel lock pin in tilling position.
(axle hole and wheel hole)

FIGURE 5

⚠ CAUTION

THIS INFORMATION IS PROVIDED HERE ONLY TO INTRODUCE THE CONTROLS. DO NOT START THE ENGINE AT THIS TIME. STARTING AND OPERATING INSTRUCTIONS ARE GIVEN ON PAGE 8. PLEASE READ THIS SECTION AND ALL OPERATING AND SAFETY INSTRUCTIONS BEFORE STARTING YOUR TILLER.

- AS A SAFETY PRECAUTION, THE DRIVE SAFETY CONTROL LEVER WILL NOT LOCK IN THE FORWARD POSITION.
- TO STOP THE WHEELS AND TINES AT ANY TIME RELEASE THE DRIVE SAFETY CONTROL LEVER.

⚠ WARNING

ENGINE SHOULD BE OFF BEFORE ADJUSTING ANY CONTROLS.

⚠ WARNING

NEVER START ENGINE OR OPERATE TILLER WITH WHEELS IN FREE-WHEEL POSITION. THE FREE-WHEEL POSITION IS FOR TRANSPORTING THE TILLER LONG DISTANCES OVER LEVEL GROUND-DO NOT ATTEMPT TO MOVE THE TILLER UP OR DOWN STEEP GRADES IN THE FREE-WHEEL POSITION.

⚠ DANGER



DEPTH REGULATOR LEVER

Tilling depth is controlled by the height of the depth regulator lever.

To adjust tilling depth. (SEE FIGURE 6)

1. Remove detent pin.
2. Raise the depth regulator lever to position tines at chosen tilling depth.
3. Align hole in depth regulator lever with hole in depth regulator bracket and insert detent pin.

Depth Regulator Lever Down = Shallower tilling. Place the detent pin in the top hole of the depth regulator lever for shallowest tilling.

Depth Regulator Lever Up = Deeper tilling. Place the detent pin in the bottom hole of the depth regulator lever for deepest tilling.

BELT TENSION ADJUSTMENT

Proper belt tension is critical to good performance. After 1/2 hour of operation, all cables may have to be adjusted due to initial stretch. Thereafter, check tension after every 2 hours of operation. Proper tension is achieved when the spring compresses 1/4" when drive lever is engaged.

To increase belt tension:

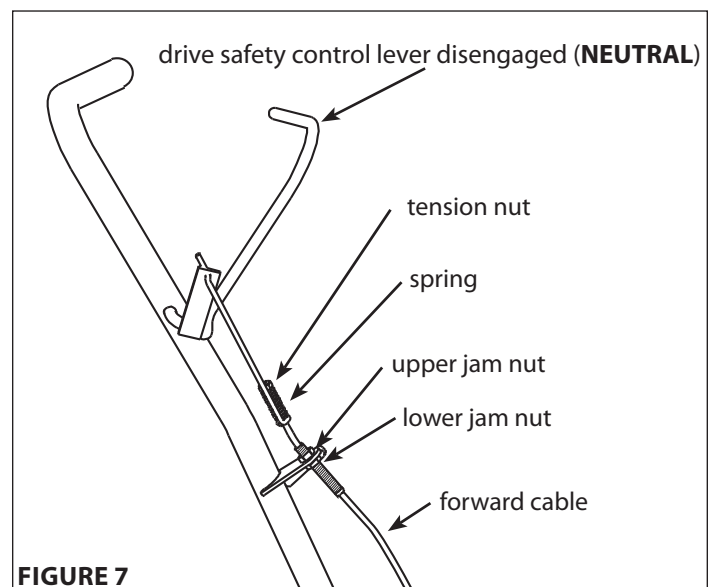
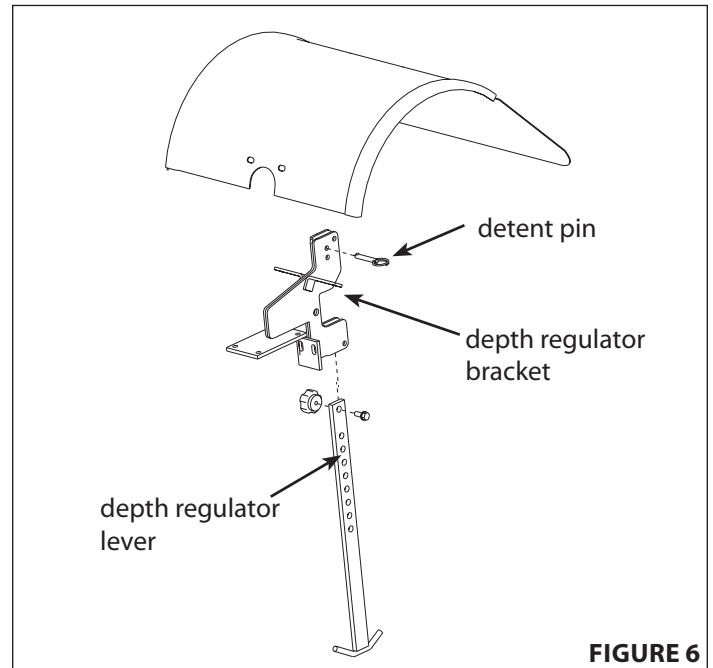
1. Loosen upper jam nut. (SEE FIGURE 7)
2. Tighten the lower jam nut in 1/8" increments, making sure not to over adjust the tension.
3. Check adjustment by measuring spring compression when drive lever is engaged. (Proper spring compression 1/4")
4. When proper adjustment is achieved, tighten upper jam nut.

This procedure can be repeated until conduit adjustment bolts are fully adjusted. If no more adjustment can be made, belt may need to be replaced.

⚠ WARNING

DO NOT ADJUST TILLING DEPTH UNLESS DRIVE SAFETY CONTROL LEVER IS RELEASED TO NEUTRAL POSITION.

ALWAYS SET THE DEPTH REGULATOR LEVER IN THE TRANSPORT POSITION BEFORE STARTING ENGINE, THAT IS, PLACE THE DETENT PIN IN THE HIGHEST HOLE OF THE DEPTH REGULATOR LEVER.



TILLING TIPS

The key to successful tilling is to begin with a shallow cut on the first pass, and then work an inch or two deeper on each successive pass.

- Tilling depth will vary with ground conditions.
- When beginning to till in unbroken ground or in extremely hard soil, set the detent pin in the highest hole of the depth regulator lever (**SEE PAGE 11**). This will allow for shallow tilling. With the depth regulator lever in this position, make several light passes over the area to be tilled. Reset for deeper depths with successive passes.
- If tiller jumps or skids uncontrollably, lower the depth regulator lever by placing the detent pin in a higher hole. This will allow for shallower tilling. Hold firmly to the handlebars to control sudden lurches.

*Immediately release the drive control lever if the tines jam or you strike a foreign object. With drive control lever in neutral position, push throttle control to **stop** position to stop the engine. Disengage the spark plug wire. When tines have stopped, remove foreign objects and check for damage.*

CULTIVATING TIPS

If you plan to use your tiller for cultivating:

- Plant rows on 20" - 22" centers for ease of turning.
- Set the depth regulator lever with the detent pin in one of the higher holes. This will allow for shallow cultivation necessary to turn over weeds, and break up and aerate the soil.

WARNING

EXTREME CAUTION MUST BE TAKEN IN SELECTING TILLING DEPTH. IF YOU ATTEMPT TO TILL TOO DEEPLY FOR SOIL CONDITIONS, THAT IS, WITH THE DEPTH REGULATOR LEVER IN TOO HIGH A POSITION, LOSS OF CONTROL COULD RESULT.

IF REMOVING MATERIAL FROM THE TINES BY HAND, STOP ENGINE AND REMOVE SPARK PLUG WIRE FIRST.

MAINTENANCE

MAINTENANCE SCHEDULE

Your rototiller has been designed and produced by the industry's leading manufacturer of outdoor power equipment to provide you years of reliable operation.

Keeping your tiller in top running condition will prolong its life, and help you obtain optimum performance.

Please read this normal care schedule, and note the recommended care operating intervals to extend the life of your unit.

Maintenance Operation	Page	Before Each Use	50 hours or Every Season
Change forward belt	16		X
Engine maintenance	17	X	X
Check or fill engine crankcase	17 ,EM	X	X*
Check tiller transmission grease	17		X
Check tire pressure	17	X	
Lubrication	17	X	
Clean tine axle shaft	17	X	
Lubricate wheel axle shaft	18		X

EM = See engine manual

* Change oil after first 5-8 hours of use, then after every 50 hours or every season. Change oil every 25 hours when operating under heavy load or in high temperatures.

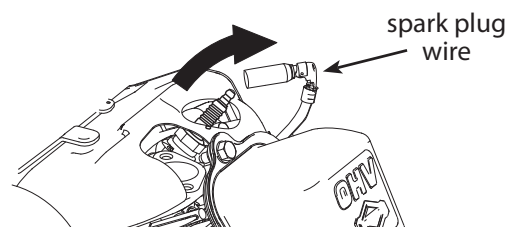
SERVICING THE ROTOTILLER

The following information will help you make the necessary checks and perform the procedures required to follow the normal care recommendations made for your rototiller.

If you prefer, your local authorized dealer can make these checks and perform the required procedures for you.

WARNING

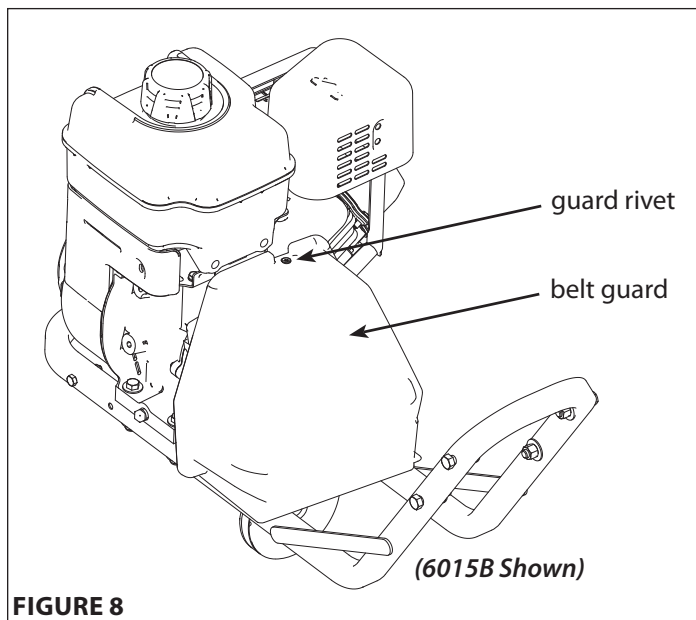
To prevent accidental starting:



Engine must be turned off and cool, and spark plug wire must be removed and secured from spark plug before checking and adjusting engine or equipment.

CHANGE FORWARD BELT

1. Turn off engine. Engine must be cool.
2. Remove spark plug wire and secure from spark plug.
3. Remove belt guard: **(SEE FIGURE 8)**
 - unscrew and remove guard rivet.
 - pull belt guard from machine.
4. Remove forward belt from engine pulley: **(SEE FIGURE 9)**
 - gently pull the engine recoil rope to rotate the pulley.
 - with the pulley turning, force the forward belt out of the V-groove.
 - slide the belt free of the engine pulley.
 - pull the forward belt down and out of the way.
5. Install new forward belt:
 - place forward belt in transmission pulley groove.
 - gently pull the engine recoil rope to rotate the pulley while forcing the forward belt into the V-groove.
6. Re-attach belt guard.
7. Attach spark plug wire.



⚠ CAUTION

DO NOT OPERATE TILLER BEFORE READING THE ENGINE MANUAL PROVIDED IN THE PARTS PACKET.

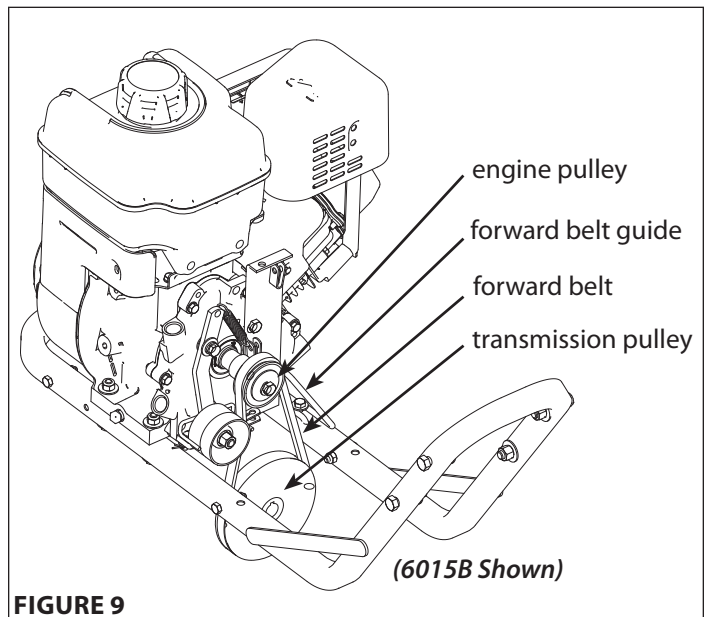
⚠ WARNING

TEMPERATURE OF MUFFLER AND NEAR BY AREAS MAY EXCEED 150° F. AVOID THESE AREAS.

IMPORTANT

ENGINE CAN OVERHEAT AND BECOME DAMAGED IF DEBRIS BLOCKS THE COOLING SYSTEM OR ROTATING SCREEN.

NEVER RUN ENGINE WITHOUT COMPLETE AIR CLEANER INSTALLED ON ENGINE.



BELT REPLACEMENT PART #'S:

31315 (forward belt)

ENGINE MAINTENANCE

Refer to the engine manual included in your parts packet for information on engine maintenance. Your engine manual provides detailed information and a maintenance schedule for performing the following tasks:

1. Check oil level before each use or after every 8 hours of operation.
2. Change oil after first 5-8 hours of operation. Change oil while engine is warm. Refill with new oil of recommended grade.
4. Check spark plug yearly or every 100 hours of operation.
5. Service air cleaner.
6. Keep engine and parts clean.
7. Check engine and equipment often for loose nuts and bolts, keep these items tightened.

CHECK OR FILL ENGINE CRANKCASE

1. Add oil according to engine manual. **Do not overfill.** Use a clean, high quality detergent oil. Use no special additives with recommended oils. **Do not mix oil with gasoline.** Oil level must be full. Check the oil level by removing oil fill plug. Oil level should be up to the bottom of the fill plug opening.
2. Always check oil level before starting engine. Refer to engine manual for capacity and type of oil to use.

CHECK TILLER TRANSMISSION GREASE

Check the grease level annually. To check the grease level:

1. Move tiller to level ground, making sure the transmission cover plate is level.
2. Remove gear case dipstick located between the handlebar mounts on the engine mount. Correct grease level is indicated between the high and low levels on the dipstick. **(SEE FIGURE 10)**
3. Replace grease level dipstick in the filler hole.

NOTE: The front wheel transmission and rear tine transmission share a common reservoir. When you add to the front transmission, you must wait a short period of time for the grease to flow rearward and equalize in both front and rear. The dipstick will read correctly on level ground for both gear units. (Use Mystic 00, or equivalent, transmission grease. Do not use 80W, 90W or 85-140.)

CHECK TIRE PRESSURE

Recommended tire pressure is 20 PSI. If tires do not have equal pressure, tiller will pull to one side.

IMPORTANT

ENGINE IS SHIPPED FROM FACTORY WITHOUT OIL. YOU MUST ADD ENGINE OIL BEFORE STARTING ENGINE.

IMPORTANT

TILLER TRANSMISSION IS SHIPPED FROM FACTORY WITH THE PROPER AMOUNT OF LIQUID GREASE.

WHEN REPLACING GREASE, THE TILLER TRANSMISSION HOLDS 18-22 OUNCES. DO NOT OVERFILL.

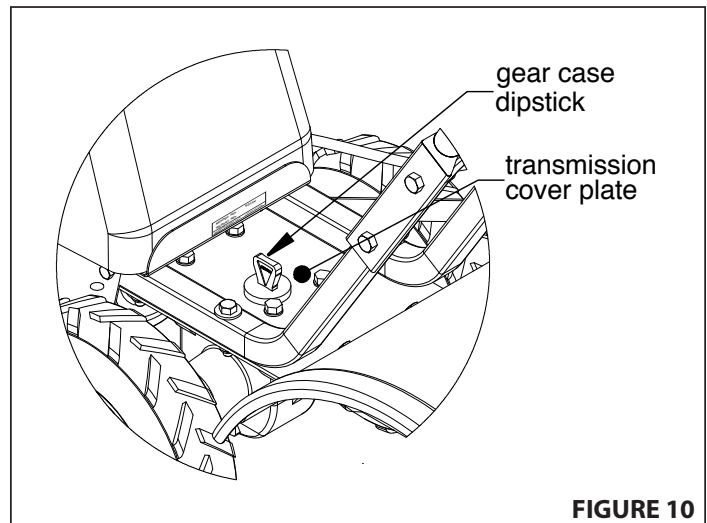


FIGURE 10

LUBRICATION

Proper lubrication of moving mechanical parts is critical for proper care and maintenance. Oil the moving parts at 10 hour intervals using a 30 weight oil.

CLEAN TINE AXLE SHAFT

1. Turn off engine. Engine must be cool.
2. Remove spark plug wire and secure from spark plug.
3. Tip the tiller forward. Block the tiller in position so that it rests on the engine mount and the tines are exposed.
4. Remove all vegetation, string, wire, and other material that may have accumulated on the axle between the inside set of tines and the seal on the transmission housing.
5. Tip the tiller back to a level position.
6. Replace spark plug wire.

STORAGE

PREPARE FOR STORAGE

Follow the steps below to prepare your tiller for storage. Read your engine manual for detailed instructions on preparing the engine for storage.

1. Protect wheels and axles from rust:
 - Remove lock pin and slide wheel off hub.
 - Coat the axles lightly with axle grease.
 - Slide wheel back on hub and insert lock pin.
2. Drain fuel system completely following engine manufacturer's instructions or add fuel stabilizer to prevent fuel from gumming up during extended storage period.
3. While engine is still warm, drain the oil from the engine. Refill with fresh oil of the recommended grade.
4. Clean external surfaces, engine and cooling fan.
5. Spark plug preparation:
 - Remove spark plug, pour one ounce of SAE 30 oil into spark plug hole.
 - Plug hole and pull starter cord slowly to distribute oil evenly in cylinder head area.
 - Reinstall spark plug.
6. Transport unit to a suitable storage location. If you have chosen to use a fuel stabilizer and have not drained the fuel system, follow all safety instructions storage precautions in this manual to prevent the possibility of fire from the ignition of gasoline fumes. Remember, gasoline fumes can travel to distant sources of ignition and ignite, causing risk of explosion and fire.
7. If there is any possibility of unauthorized use or tampering, remove the spark plug and store it in a safe place before storing the rototiller unit. Be sure to plug the spark plug hole to prevent foreign material from entering.

WARNING

DO NOT STORE TILLER IN AN UNVENTILATED AREA WHERE FUEL FUMES MAY REACH FLAME, SPARKS, PILOT LIGHTS OR AN IGNITED OBJECT. DRAIN FUEL OUTDOORS AWAY FROM ANY IGNITION SOURCES. USE ONLY APPROVED FUEL CONTAINERS.

TROUBLESHOOTING

TROUBLESHOOTING GUIDE

While normal care and routine maintenance will extend the life of your rototiller, prolonged or constant use may eventually require that service be performed to allow it to continue operating properly. The troubleshooting guide below lists the most common problems, causes and remedies.

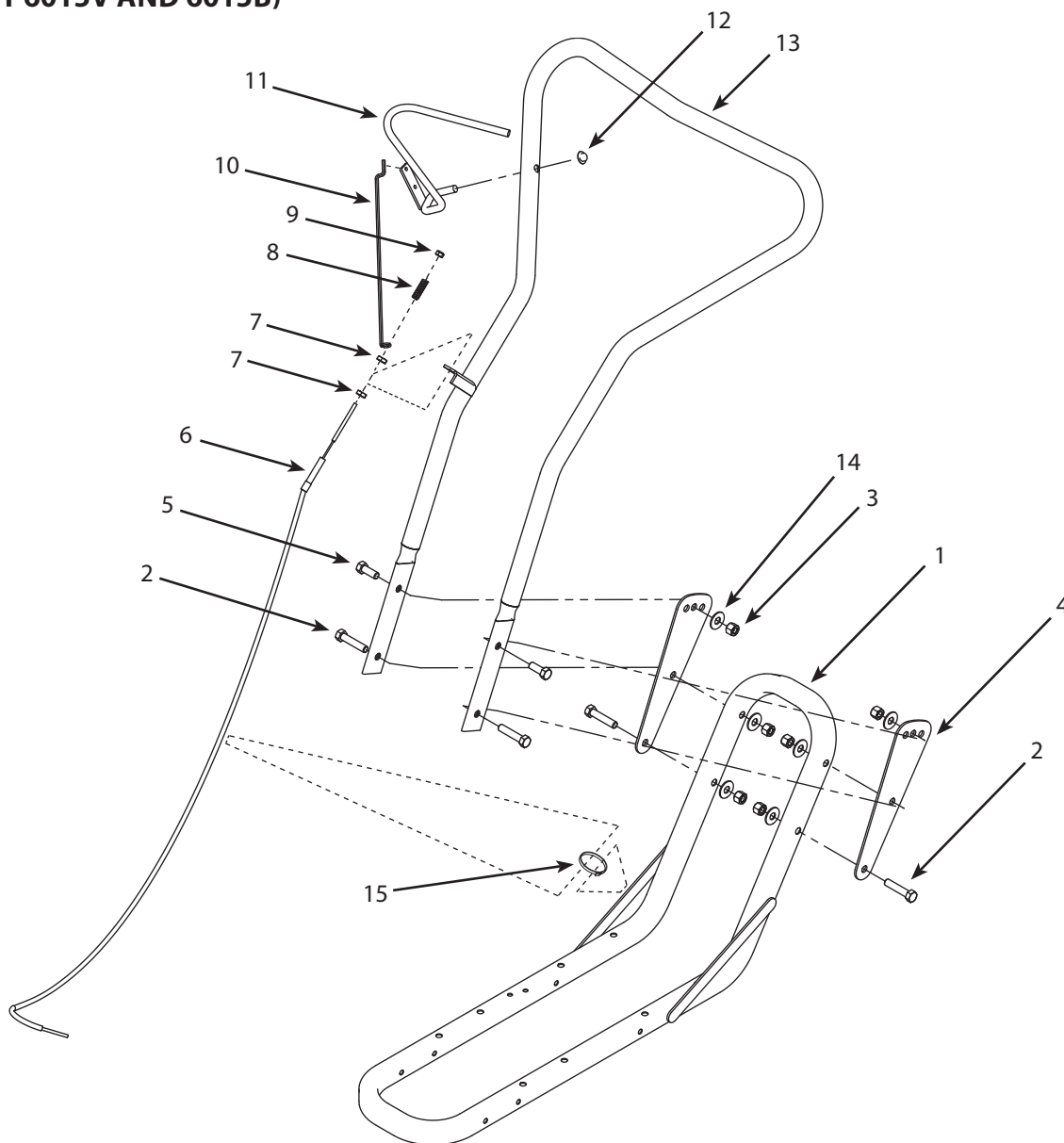
WARNING

PRACTICE SAFETY AT ALL TIMES. ENGINE MUST BE TURNED OFF AND ALLOWED TO COOL, AND SPARK PLUG WIRE MUST BE DISCONNECTED AND SECURED BEFORE ATTEMPTING ANY MAINTENANCE OR REPAIR.

FAILURE TO COMPLY WITH THIS SAFETY REQUIREMENT CAN RESULT IN SERIOUS PERSONAL INJURY TO YOU OR BYSTANDERS.

PROBLEM	REMEDY/ACTION
Engine will not start	<ul style="list-style-type: none"> Add gas to gas tank. (Make sure fuel lever is set to ON position) Connect spark plug wire to spark plug Throttle must be positioned at choke for a cold start
Engine runs rough, floods during operation	<ul style="list-style-type: none"> Clean or replace air cleaner
Engine is hard to start	<ul style="list-style-type: none"> Drain old fuel and replace with fresh. Use gas stabilizer at end of season Make sure spark plug wire is securely attached to spark plug Drive safety control levers must be released to neutral position to start the engine
Engine misses or lacks power	<ul style="list-style-type: none"> Raise the tines for shallow tilling by lowering the depth regulator lever Remove and clean fuel tank Clean or replace air cleaner Improper carburetor adjustment, take to authorized engine service center Replace spark plug and adjust gap Drain and refill gas tank and carburetor
Engine will not stop when throttle control is positioned at stop	<ul style="list-style-type: none"> See engine manual to check and adjust throttle linkage
Tiller moves forward during starting	<ul style="list-style-type: none"> Drive safety control levers must be released to neutral position to start the engine
Tiller is difficult to control when tilling (machine jumps or lurches forward)	<ul style="list-style-type: none"> Lock wheels in tilling position Raise tines for shallower tilling by lowering the depth regulator lever
Tines turn, wheels do not turn	<ul style="list-style-type: none"> Lock wheels in tilling position Internal transmission failure, see your dealer
Tines turn, wheels turn, tiller does not move	<ul style="list-style-type: none"> Lower the tines for deeper tilling by raising the depth regulator lever
Belts squeal in neutral	<ul style="list-style-type: none"> Adjust forward belt guide: <ul style="list-style-type: none"> turn engine off and allow muffler to cool disconnect spark plug wire and secure from spark plug remove belt guard pull down on drive safety control lever manually bend forward belt guide so there is 1/16 inch or less clearance between belt guide and belt replace belt guard and spark plug wire
Excessive heat build up in transmission/tine area during tilling	<ul style="list-style-type: none"> Remove vegetation by following instructions in Clean Tine Axle Shaft of Normal Care section. FOLLOW ALL SAFETY INSTRUCTIONS Check transmission fluid and fill if needed

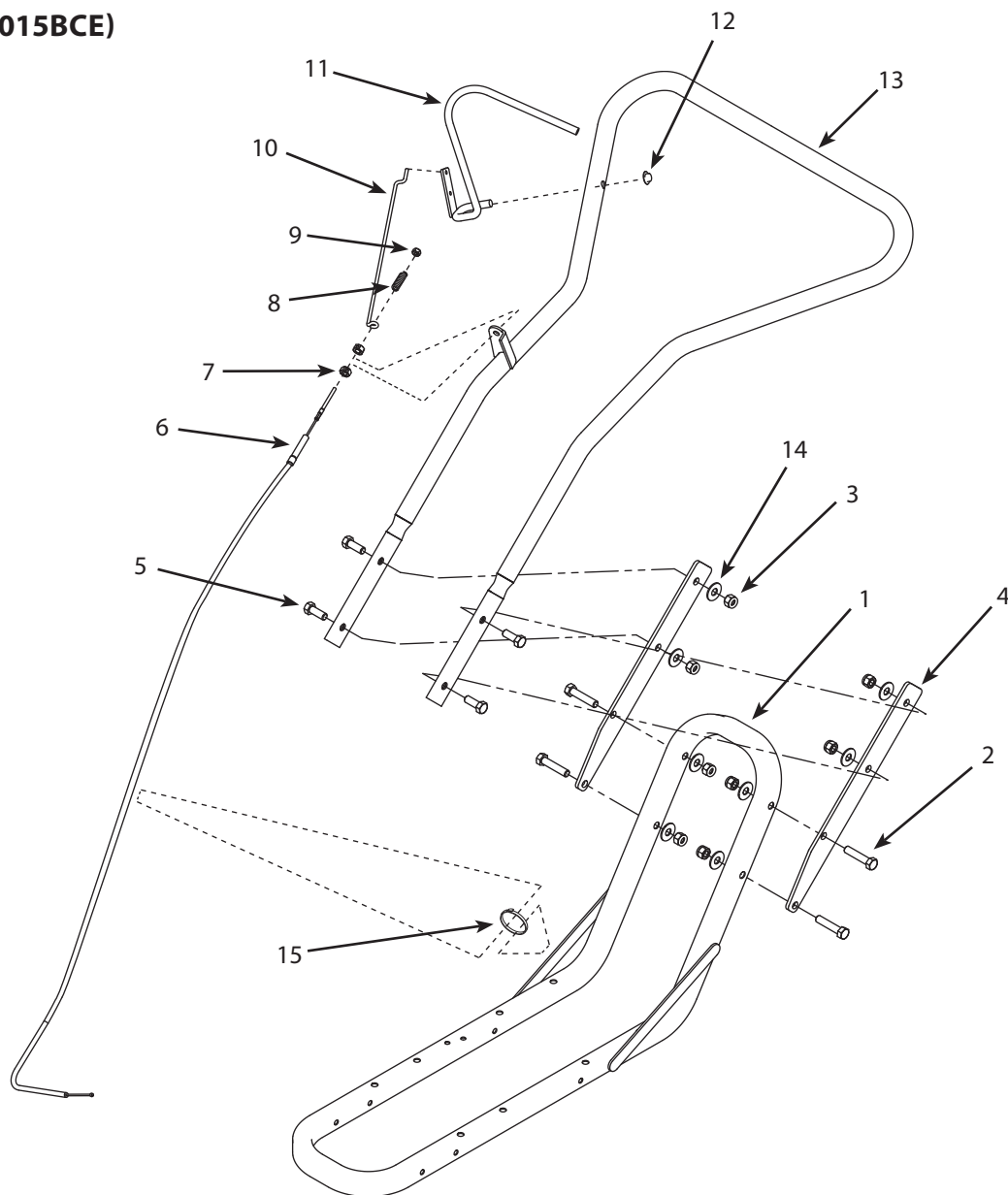
CRT HANDLEBAR AND HOOD PARTS AND PARTS LIST (PRODUCT 6015V AND 6015B)



REF. NO.	PART #	DESCRIPTION	QTY.
1	31305	WELDMENT, ENGINE/HANDLE MOUNT	1
2	2001	BOLT 3/8-16 X 1/34 HH GR5 ZN	4
3	1662	NUT 3/8-16 NYLOCK	6
4	13285	HANDLEBAR EXTENSION	2
5	2102	BOLT 3/8-16 X 1 HH GR5 ZN	2
6	53630	CABLE, REAR TINE 39" SHEATH	1
7	53607	NUT 5/16-24 HEX JAM	2
8	53620	COMPRESSION SPRING	1

REF. NO.	PART #	DESCRIPTION	QTY.
9	53606	NUT 10-24 HNYLK ZN	1
10	53613	LINK 9 1/2" LONG	1
11	3262	DEADMAN WELDMENT	1
12	3170	NUT-PUSH 3/8" W/SAFETY WASHER	1
13	31313	WELDMENT, HANDLE BAR LOOP REAR TINE	1
14	WF38	WASHER, FLAT 3/8 STANDARD	6
15	—	ZIP TIE	1

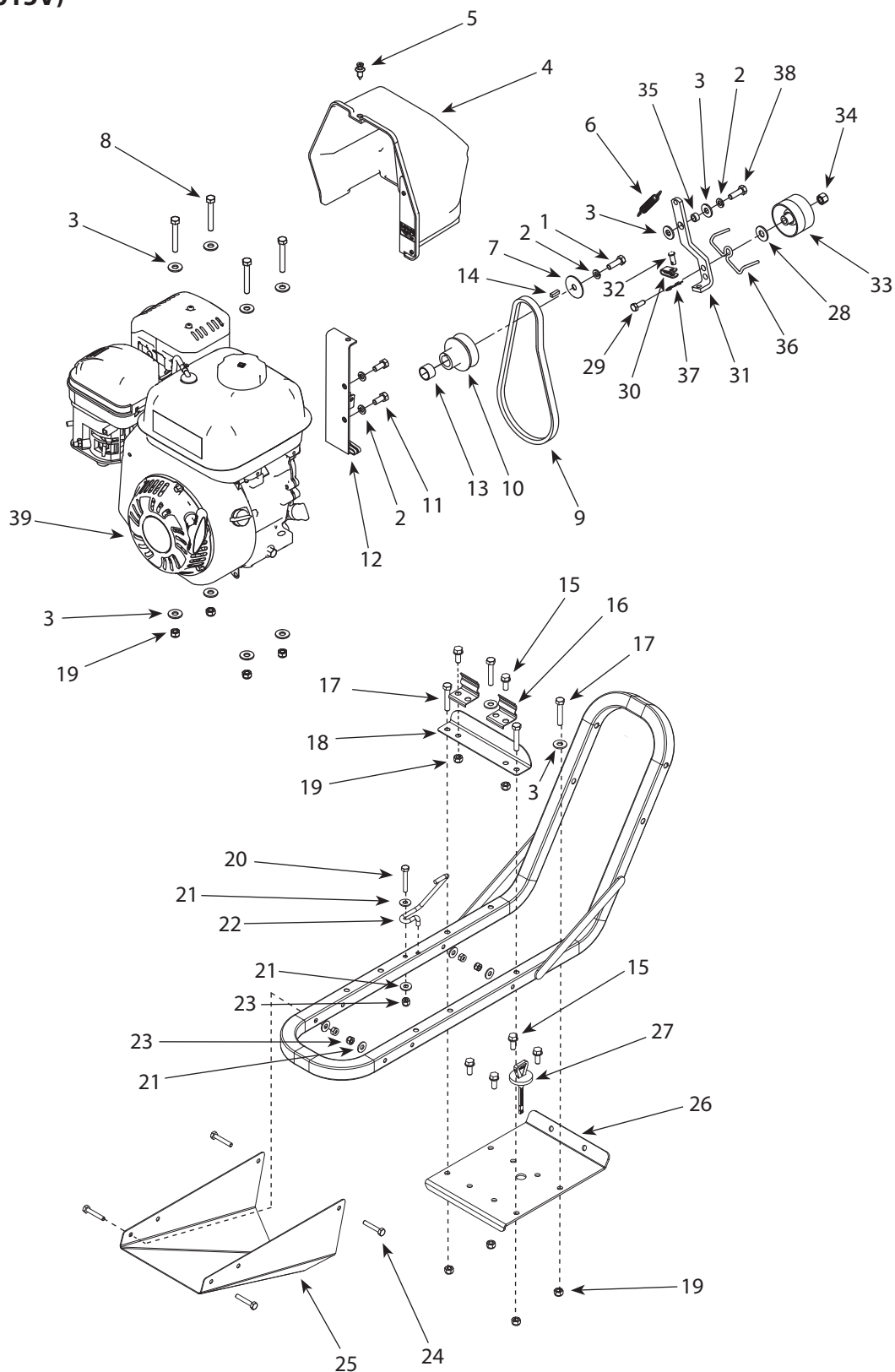
CRT HANDLEBAR AND HOOD PARTS AND PARTS LIST (PRODUCT 6015BCE)



REF. NO.	PART #	DESCRIPTION	QTY.
1	31305	WELDMENT, ENGINE/HANDLE MOUNT	1
2	2001	BOLT 3/8-16 X 1/34 HH GR5 ZN	4
3	1662	NUT 3/8-16 NYLOCK	8
4	31329	HANDLE BAR EXTENSION CE	2
5	2102	BOLT 3/8-16 X 1 HH GR5 ZN	4
6	31335	CABLE, REAR TINE FOR CE	1
7	53607	NUT 5/16-24 HEX JAM	2
8	53620	COMPRESSION SPRING	1

REF. NO.	PART #	DESCRIPTION	QTY.
9	53606	NUT 10-24 HNYLK ZN	1
10	53613	LINK 9 1/2" LONG	1
11	3262	DEADMAN WELDMENT	1
12	3170	NUT-PUSH 3/8" W/SAFETY WASHER	1
13	31313	WELDMENT, HANDLE BAR LOOP REAR TINE	1
14	WF38	WASHER, FLAT 3/8 STANDARD	8
15	—	ZIP TIE	1

CRT MOTOR MOUNT PARTS (PRODUCT 6015V)



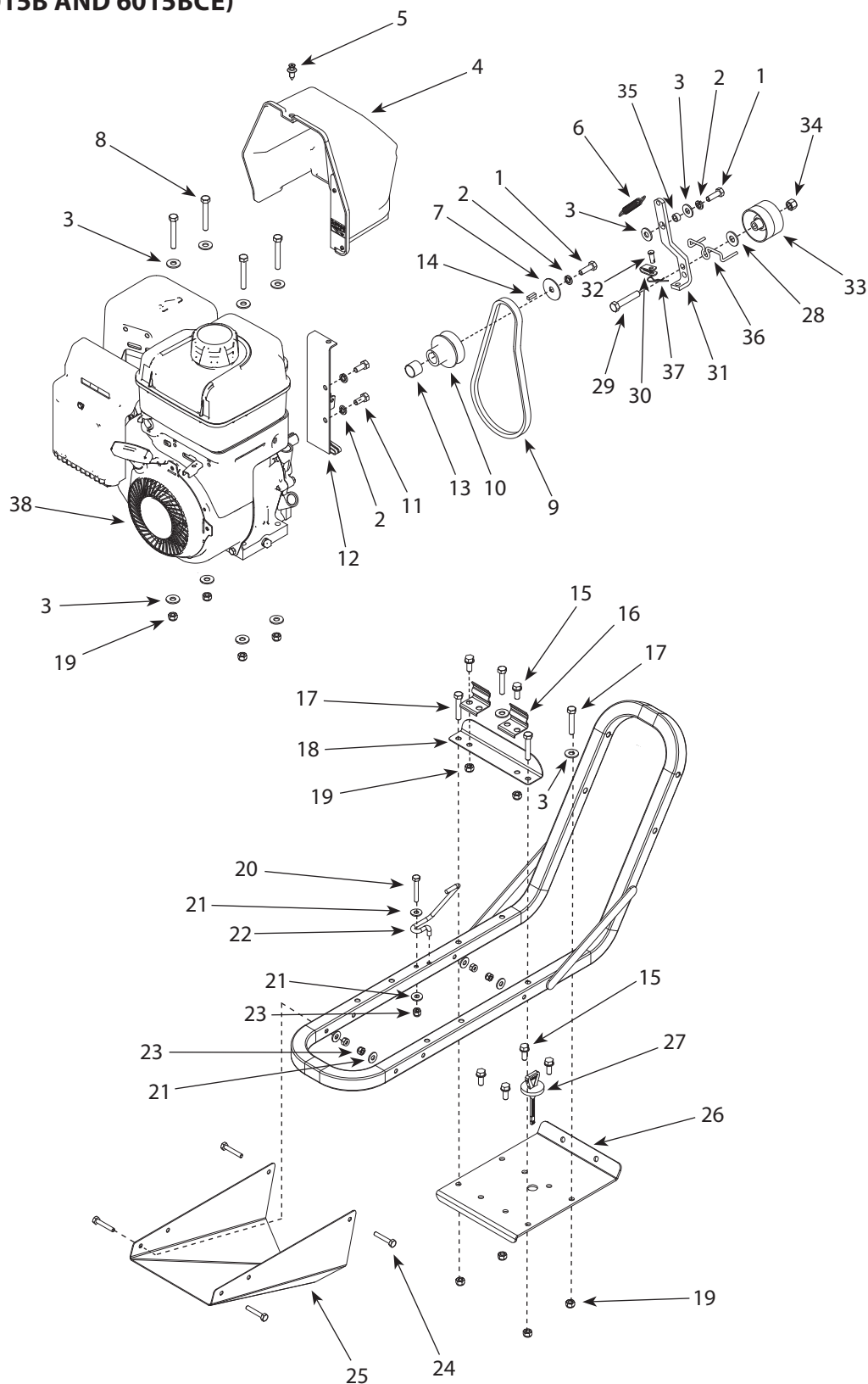
CRT MOTOR MOUNT PARTS LIST (PRODUCT 6015V)

REF. NO.	PART #	DESCRIPTION	QTY.
1	810	BOLT, 5/16-24 X 1 HH GR5	1
2	504	LOCKWASHER SPRING 5/16"	4
3	WF516	WASHER, FLAT 5/16" STANDARD ZN	12
4	13453	GUARD, BELT REAR TINE	1
5	53638	RIVET, PLASTIC PUSH IN REAR TINE, 12/05	1
6	1407	SPRING FORWARD ARM	1
7	803	WASHER, 5/16"ID X 1-1/2"OD FLAT 16 GA.	1
8	48300	BOLT, 5/16-18 X 2-1/4 HHCS GR5 ZN	4
9	31315	BELT, DRIVE L4 POWER RATED	1
10	3178	PULLEY, SINGLE GROOVE ENGINE	1
11	18106	BOLT, M8 -1.25 X 20 HH	2
12	53622	WELDMENT, CABLE PULL PLATE RT, 12/05	1
13	742	SPACER, DRIVE PULLEY .550"	1
14	3364	KEY	1
15	1501	BOLT, 5/16-18 X 3/4 SFHH GR5 ZN	6
16	53618	CLIP, BELT GUARD TILLERS, 12/05	2
17	8655	BOLT, 5/16-18 X 1-3/4 HH	4
18	31306	TAB, BELT GUARD SUPPORT SMALL REARTINE	1
19	60G5NY	NUT, 5/16-18 NYLOC	10
20	48250	BOLT, 1/4-20 X 1-3/4 HHCS GR5 ZN	1
21	48261	WASHER, 1/4 FLAT ZINC	5
22	53633	GUIDE BELT REAR TINE	1
23	67538	NUT, 1/4-20 HNYLK ZN	5
24	48240	BOLT, 1/4-20 X 1-1/2 HHCS GR5 ZN	4
25	31302	PAN, LOWER	1
26	31301	PLATE, TRANNY COVER/HOOD MOUNT	1
27	53413	DIPSTICK	1

REF. NO.	PART #	DESCRIPTION	QTY.
28	WF38	WASHER, FLAT 3/8 STANDARD ZINC	1
29	48144	BOLT, 3/8-16 X 2 HHCS GR5 ZN	1
30	53596B	YOKE, ZINC PLATED CLEVIS	1
31	53617	ARM, FORWARD REAR TINE, 12/05	1
32	1416	PIN CLEVIS	1
33	1408	PULLEY, IDLER FORWARD	1
34	2104	NUT, 3/8-16 HLKBW ZN	1
35	53637	BUSHING, FORWARD ARM REAR TINE, 12/05	1
36	739	BELT GUIDE, REVERSE	1
37	1418	PIN COTTER SIZE 2	1
38	64617	BOLT, M8 - 1.25 X 25 HH	1
39	*	ENGINE 212CC 4-CYCLE VIPER	1

* See Viper engine manual for additional information

CRT MOTOR MOUNT PARTS (PRODUCT 6015B AND 6015BCE)



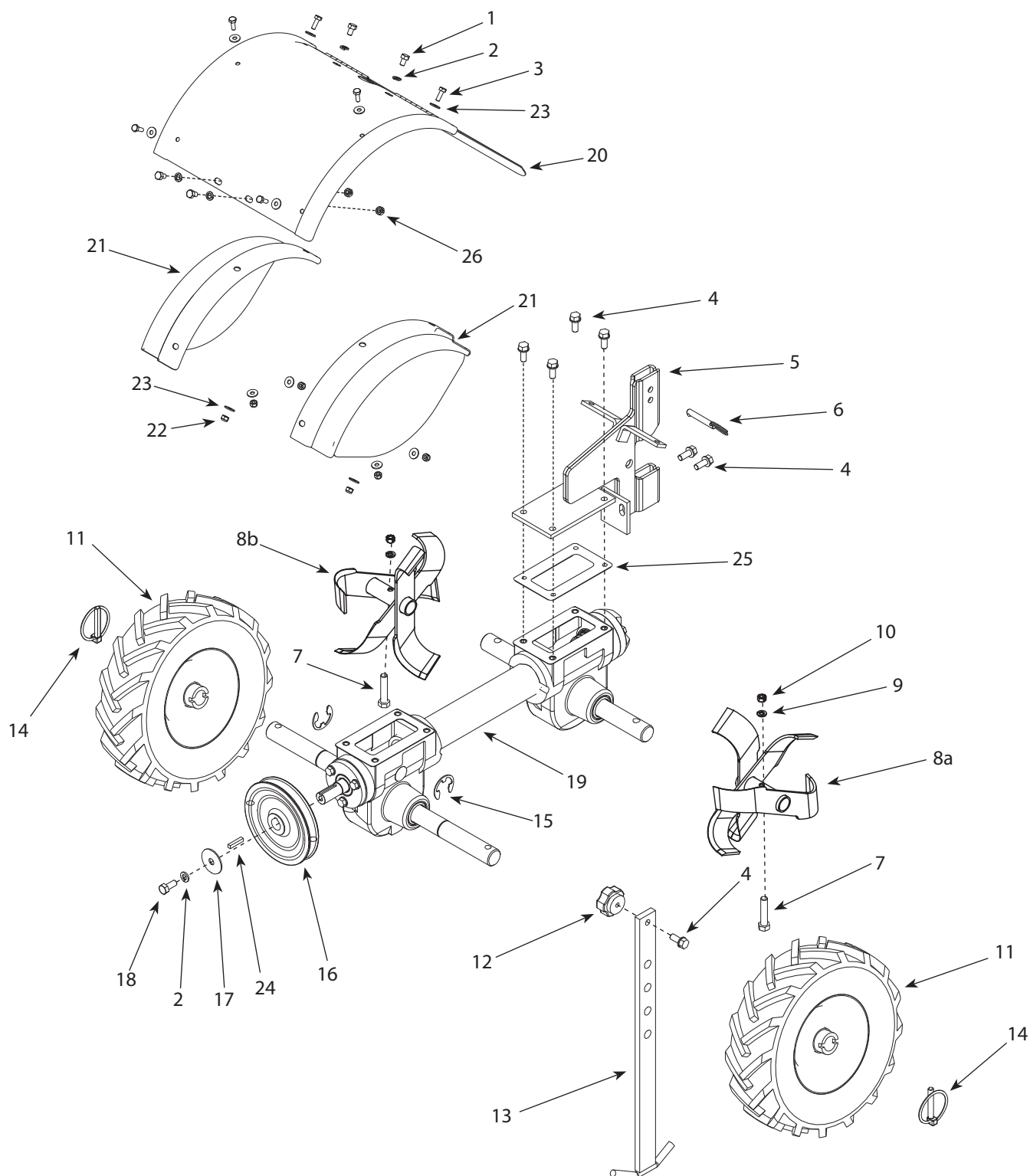
CRT MOTOR MOUNT PARTS LIST (PRODUCT 6015B AND 6015BCE)

REF. NO.	PART #	DESCRIPTION	QTY.
1	810	BOLT, 5/16-24 X 1 HH GR5	2
2	504	LOCKWASHER SPRING 5/16"	4
3	WF516	WASHER, FLAT 5/16" STANDARD ZN	12
4	13453	GUARD, BELT REAR TINE	1
5	53638	RIVET, PLASTIC PUSH IN REAR TINE, 12/05	1
6	1407	SPRING FORWARD ARM	1
7	803	WASHER, 5/16"ID X 1-1/2"OD FLAT 16 GA.	1
8	48300	BOLT, 5/16-18 X 2-1/4 HHCS GR5 ZN	4
9	31315	BELT, DRIVE L4 POWER RATED	1
10	3178	PULLEY, SINGLE GROOVE ENGINE	1
11	802	BOLT, 5/16-24 X 3/4 HH GR5 ZN	2
12	53622	WELDMENT, CABLE PULL PLATE RT, 12/05	1
13	755	SPACER, DRIVE PULLEY .700"	1
14	3364	KEY	1
15	1501	BOLT, 5/16-18 X 3/4 SFHH GR5 ZN	6
16	53618	CLIP, BELT GUARD TILLERS, 12/05	2
17	8655	BOLT, 5/16-18 X 1-3/4 HH	4
18	31306	TAB, BELT GUARD SUPPORT SMALL REARTINE	1
19	60G5NY	NUT, 5/16-18 NYLOC	10
20	48250	BOLT, 1/4-20 X 1-3/4 HHCS GR5 ZN	1
21	48261	WASHER, 1/4 FLAT ZINC	5
22	53634	GUIDE BELT REAR TINE	1
23	67538	NUT, 1/4-20 HNYLK ZN	5
24	48240	BOLT, 1/4-20 X 1-1/2 HHCS GR5 ZN	4
25	31302	PAN, LOWER	1
26	31301	PLATE, TRANNY COVER/HOOD MOUNT	1
27	53413	DIPSTICK	1

REF. NO.	PART #	DESCRIPTION	QTY.
28	WF38	WASHER, FLAT 3/8 STANDARD ZINC	1
29	48144	BOLT, 3/8-16 X 2 HHCS GR5 ZN	1
30	53596B	YOKE, ZINC PLATED CLEVIS	1
31	53617	ARM, FORWARD REAR TINE, 12/05	1
32	1416	PIN CLEVIS	1
33	1408	PULLEY, IDLER FORWARD	1
34	2104	NUT, 3/8-16 HLKBW ZN	1
35	53637	BUSHING, FORWARD ARM REAR TINE, 12/05	1
36	739	BELT GUIDE, REVERSE	1
37	1418	PIN COTTER SIZE 2	1
38	*	ENGINE 800 SERIES BRIGGS (CE)	1

* See Briggs and Stratton engine manual for additional information. The CE Briggs engine has additional decals to meet regulations.

CRT TINES & HOOD PARTS (PRODUCT 6015V, 6015B AND 6015BCE)

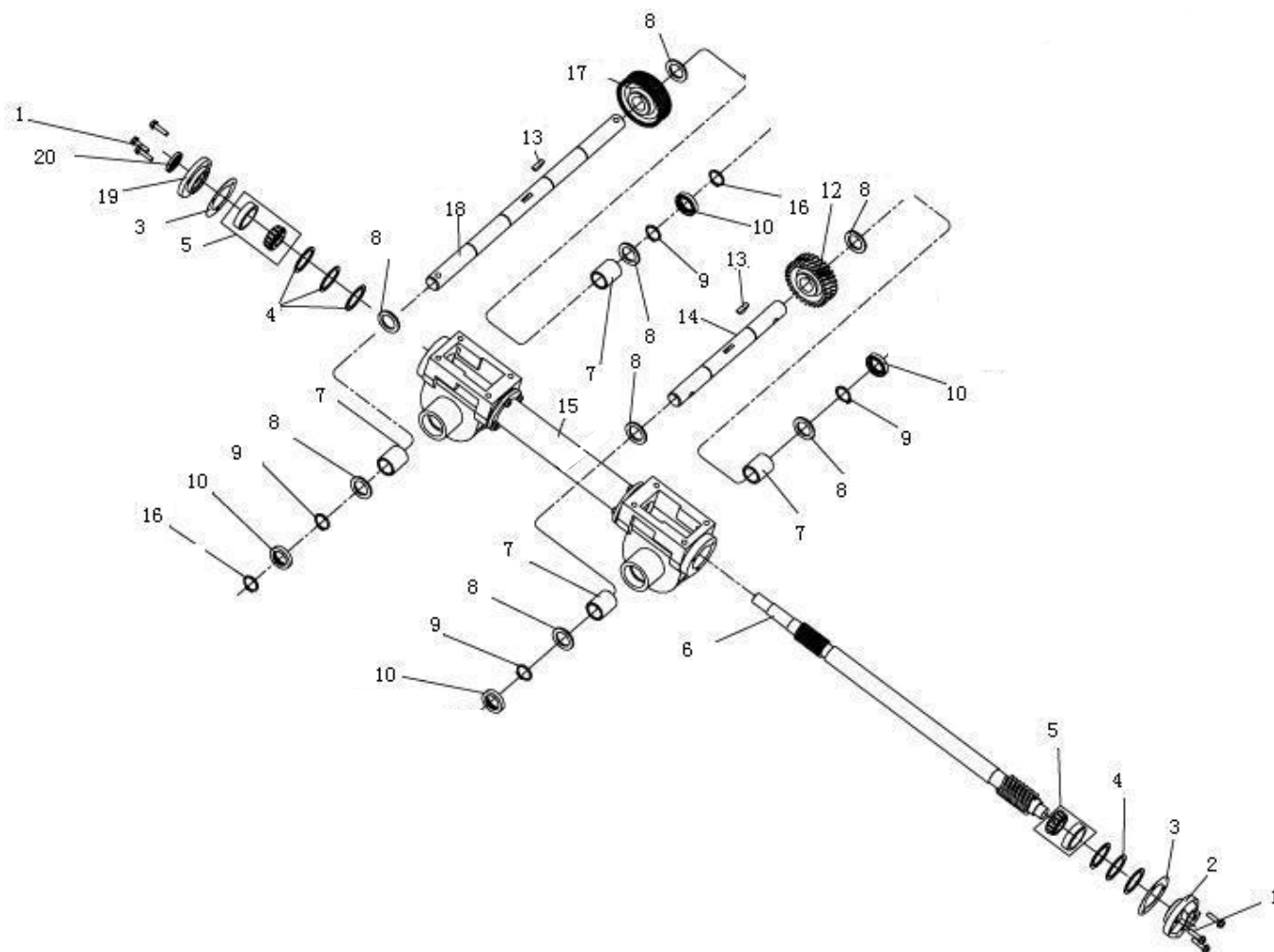


CRT TINES & HOOD PARTS LIST (PRODUCT 6015V, 6015B AND 6015BCE)

REF. NO.	PART #	DESCRIPTION	QTY.
1	417	BOLT, 5/16-18 X 1/2 HH GR5	4
2	504	LOCKWASHER, SPRING 5/16"	5
3	8930	BOLT, 1/4-20 X 3/4 HH GR5 ZN	6
4	1501	BOLT, 5/16-18 X 3/4 HH GR5 ZN	7
5	53660	WELDMENT, TAIL MOUNT REAR TINE, 12/05	1
6	69170	DETENT, PIN 5/16 X 2 ZN	1
7	2001	BOLT, 3/8-16 X 1-3/4 HH GR5 ZN	2
8a	1900LCRT	TINE SET ASSEMBLY LS-CRT RS-SRT	1
8b	1900RCRT	TINE SET ASSEMBLY RS-CRT LS-SRT	1
9	719	WASHER, 3/8" SPRING LOCK ZINC	2
10	2104	NUT, 3/8-16 HLKBW ZN	2
11	1101A	WHEEL TIRE ASSEMBLY/LOCKPIN	2
12	48406	KNOB, 5/15-18, BLACK FIVE STAR	1
13	53655	WELDMENT, DRAG STAKE CRT TILLER, 12/05	1
14	1103	LOCK PIN, 5/16 X 1-3/4 LYNCH PIN 1010 MA	2
15	1710	SNAP RING, EXTERNAL RET.	2
16	31314*	PULLY, TRANSMISSION SMALL REAR TINE	1
17	803	WASHER, 5/16"ID X 1-1/2"OD FLAT 16 GA.	1
18	802	BOLT, 5/16-24 X 3/4 HH GR5 ZN	1
19	1500CRT7	TRANSMISSION ASSY SHORT CRT LOCKPIN LG WH	1
20	31334	WELDMENT, HOOD WITH EXTENSION HOLES	1
21	31332	WELDMENT, SIDE SHIELD	2
22	67538	NUT 1/4-20 HNYLK ZN	6
23	48261	WASHER 1/4" FLAT ZINC	12
24	3364	KEY	1
25	1504	GASKET-TRANS. & TIL. HOUS COVER S-8091	2
26	60G56	NUT, LOC 5/16-18 BI-WAY ZN	2

* On the 6015V the pulley is reversed, putting the short shoulder towards engine.

CRT WHEEL & TILLER SHAFT PARTS & PARTS LIST (PRODUCT 6015V, 6015B AND 6015BCE)



REF. NO.	PART #	DESCRIPTION	QTY.
1	331063	BOLT, M6 X 25MM	6
2	1508	COVER, REAR TRANSMISSION	1
3	1507	GASKET, FRONT & REAR TRANSMISSION COVER	2
4	-	SHIM, DRIVE SHAFT	6
5	1601	BEARING, TAPERED ROLLER	2
6	1500CRT606	SHAFT, DRIVE CRT	1
7	-	BUSHING, TINE & WHEEL SHAFT	4
8	-	SHIM, TINE & WHEEL SHAFT	8
9	1810	RING, RETAINER INTERNAL	4
10	1506	SEAL, GREASE TINE & WHEEL SHAFT	4
12	1500CRT512	GEAR, WORM TINE CRT	1

REF. NO.	PART #	DESCRIPTION	QTY.
13	1500P113	KEY, WOODRUFF	2
14	-	SHAFT, TINE	1
15	-	HOUSING, TRANSMISSION	1
16	1710	RING, RETAINER EXTERNAL	2
17	1500P117	GEAR, WORM WHEEL CRT	1
18	-	SHAFT, WHEEL	1
19	1514	COVER, FRONT TRANSMISSION	1
20	1515	SEAL, GREASE INPUT	1
21	1690	TRANSMISSION LUBE 00 1 QT	1 QT

NOTES

[illegible]



6015 SERIES CRT ROTOTILLERS

Warranty Terms and Conditions

PRODUCT WARRANTY: 1-YEAR LIMITED WARRANTY

Ardisam, Inc., a manufacturing company, warrants this **EARTHQUAKE CRT ROTOTILLER** to be free from defects in the material or workmanship for a period of one year from the date of purchase. During the one-year warranty of this product, Ardisam will furnish, at their discretion, parts and labor to correct any defect caused by faulty material or workmanship. Any unit used in a commercial application is covered for a period of 90 days after purchase. This warranty applies to the original owner with a proof of purchase and is not transferable. For the warranty to be valid, the product must be registered online, or the warranty card must be filled out and received by Ardisam, Inc., within 30 days of purchase.

6015V ENGINE WARRANTY: 2-YEAR LIMITED EMISSIONS CONTROL WARRANTY (SEE EXPLANATION OF EMISSIONS CONTROL WARRANTY PROVISIONS FOR DETAILS)

Ardisam, Inc., a manufacturing company warrants its Viper® Engines under a two-year limited emissions control warranty to be free from defects in materials and workmanship for the service life of the product not to exceed twenty-four consecutive months from the date of purchase for consumer applications.

*These warranties apply only to products which have not been subjected to negligent use, misuse, alteration, accident, unauthorized parts, failure to use proper fuel and oil, or if repairs have been performed at non-authorized service centers. These warranties supersede all other warranties either expressed or implied and all other obligations or liabilities on our part. Ardisam, does not assume, and does not authorize any other person to assume for us, any liability in connection with the sale of our products. **To be at "No Charge," warranty work must be sent directly to Ardisam, Inc. or one of our authorized service centers and performed by them.** To obtain warranty service and/or replacement instructions, contact our customer service department. If you choose to ship your product to Ardisam for warranty repair, you must first have prior approval from Ardisam by calling our customer service department for a return material authorization number (RMA#). Under these circumstances, all items must be shipped prepaid. Ardisam will at no charge, repair or replace, at their discretion, any defective part which falls under the conditions stated above. Ardisam retains the right to change models, specifications and price without notice.

Earthquake™, Division of Ardisam, Inc.
1160 Eighth Avenue; P.O. Box 666
Cumberland, Wisconsin 54829
800-345-6007 · Fax (715) 822-4180
E-mail: info@ardisam.com

Explanation of Emissions Control (6015V)**Warranty Provisions**

Viper® Engines are designed, built and equipped to meet all EPA requirements. It warrants that it is free from defects in material and workmanship that could cause failure to the warranted part; and that it is identical in all material respects to the engine described in the manufacturer's application for certification. When a warrantable condition exists, Ardisam will repair your engine at no cost to you, including parts and labor. The engine emissions label will indicate certification information. Purchasers located more than 100 miles from a Viper® authorized repair center in need of warrantable repair should contact customer service. If it is determined that warranted repair is indeed necessary, Ardisam, Inc., will cover the cost of shipping to an authorized Viper® repair center. All such requests must first be pre-approved by customer service prior to shipping.

Listed below are the parts covered by the emissions control systems warranty. Some parts listed below may require scheduled maintenance and are warranted up to the first scheduled replacement point for that part. See maintenance schedule in Maintenance and Storage section of manual for more details. Coverage under this warranty includes only the parts listed below (the emission and evaporation control systems) if so equipped:

- Air Filter Assembly (only to the first scheduled replacement point)
- Fuel Filter (only to the first scheduled replacement point)
- Carburetor
- Fuel Lines, Fuel Line Fittings and Clamps
- Fuel Metering Valve (if equipped)
- Evaporative System (if equipped)
 - Canister (if equipped)
 - Canister filter (if equipped)
 - Vapor hose (if equipped)
 - Orifice connector (if equipped)
 - Fuel tank
 - Fuel cap
 - Primer bulb canister (if equipped)
- Spark Plugs
- Magneto Ignition System
- Muffler Assembly

LIMITATIONS

The Emission Control Systems Warranty shall not cover any of the following:

- a) Repair or replacement required because of misuse or neglect, improper maintenance, repairs improperly performed or replacements not conforming to Ardisam, Inc., specifications that adversely affect performance and/or durability and alterations or modifications not recommended or approved in writing by Ardisam, Inc.
- b) Replacement of parts and other services and adjustments necessary for required maintenance at or after the first scheduled replacement point;
- c) Consequential damages such as loss of time, inconvenience, loss of use of the engine or equipment, etc.
- d) Diagnosis and inspection fees that do not result in eligible warranty service being performed; and
- e) Any add-on or modified part, or malfunction of authorized parts due to the use of add-on or modified parts.

These items will be covered for a period of **two years** from the date of the original purchase. Viper warrants that: the components are designed, built and equipped so as to conform with all applicable regulations adopted by the EPA; that they are free from defects in material and workmanship that could cause failure to the engine or other; and that the components used are identical in all material respects to the engine described in the manufacturer's application for certification. The warranty period begins on the date the engine is originally purchased.

MAINTENANCE AND REPAIR REQUIREMENTS

The owner is responsible for the proper use and maintenance of the engine. Ardisam, Inc. recommends that all receipts and records covering the performance of regular maintenance be retained in case questions arise. If the engine is resold during the warranty period, the maintenance records should be transferred to each subsequent owner. Ardisam, Inc. reserves the right to deny warranty coverage if the engine has not been properly maintained; however, Ardisam, Inc. may not deny warranty repairs solely because of failure to keep maintenance records.

Normal maintenance replacement or repair of emission control devices and systems may be performed by any repair establishment or individuals; however, warranty repairs must be performed by an Ardisam authorized service center. Any replacement parts or service that is equivalent in performance and durability may be used in non-warranty maintenance or repairs, and shall not reduce the warranty obligations of the engine manufacturer.

The warranty on emissions-related parts is as follows:

- Any warranted part that is not scheduled for replacement as required maintenance in the owner's manual supplied, is warranted for the warranty period stated above. If any such part fails during the period of warranty coverage, that part will be repaired or replaced at no charge to the owner. Any such part repaired or replaced under the warranty will be warranted for the remaining warranty period.
- Any warranted part that is scheduled only for regular inspection in the owner's manual supplied, is warranted for the warranty period. Any such part repaired or replaced under warranty will be warranted for the remaining warranty period.
- Any warranted part that is scheduled for replacement as required maintenance in the owner's manual supplied, is warranted for the period of time prior to the first scheduled replacement point for that part. If the part fails prior to the first scheduled replacement, the part will be repaired or replaced at no charge to the owner. Any such part repaired or replaced under warranty will be warranted for the remainder of the period prior to the first scheduled replacement point for the part.
- Add on or modified parts that are not exempted by the Air Resources Board may not be used. The use of any nonexempted add on or modified parts by the owner will be grounds for disallowing a warranty claim. The manufacturer will not be liable to warrant failures of warranted parts caused by the use of a nonexempted add on or modified part.



Earthquake™, Division of Ardisam, Inc.
1160 8th Avenue, PO Box 666
Cumberland, WI 54829
800-345-6007 | Fax 715-822-2223
E-mail: info@ardisam.com

All weights, specifications and features are approximate and are subject to change without notice. Due to continuous product improvements, product images may not be exact. Items used for props not included. Some assembly may be required.

Check for parts online at www.getearthquake.com or call 800-345-6007 M-F 8-5