



Illustrated Parts Breakdown

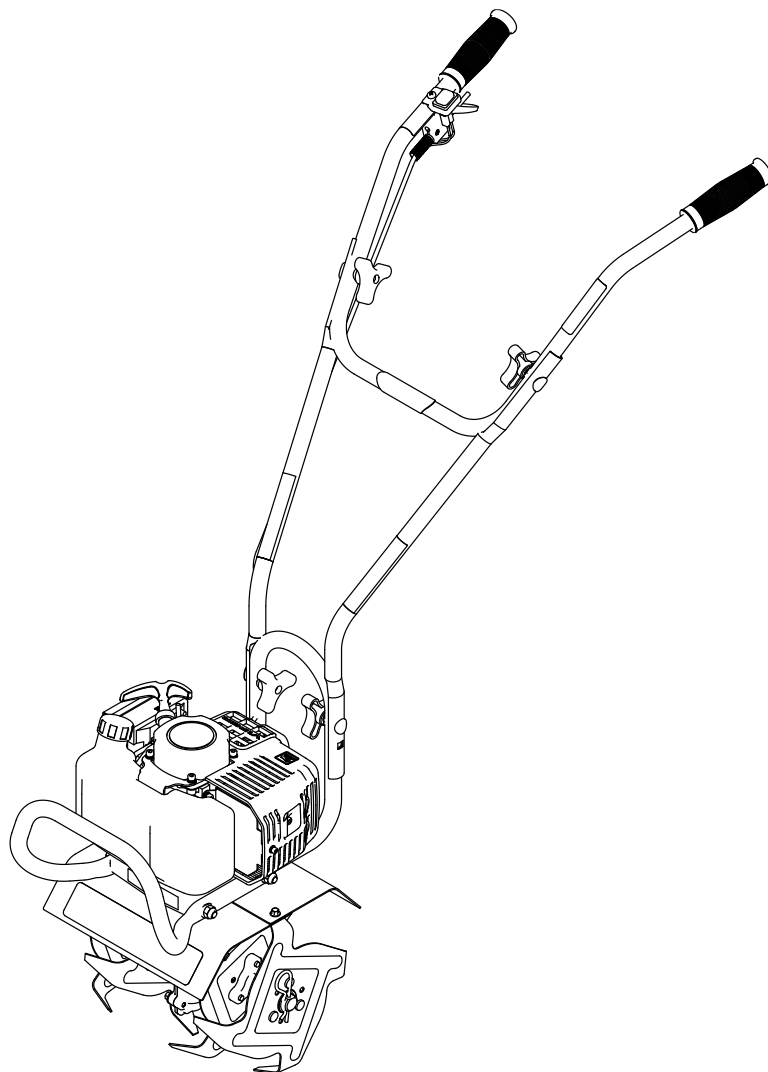
MAC
33cc 2-Cycle Cultivator

Model #: 31452

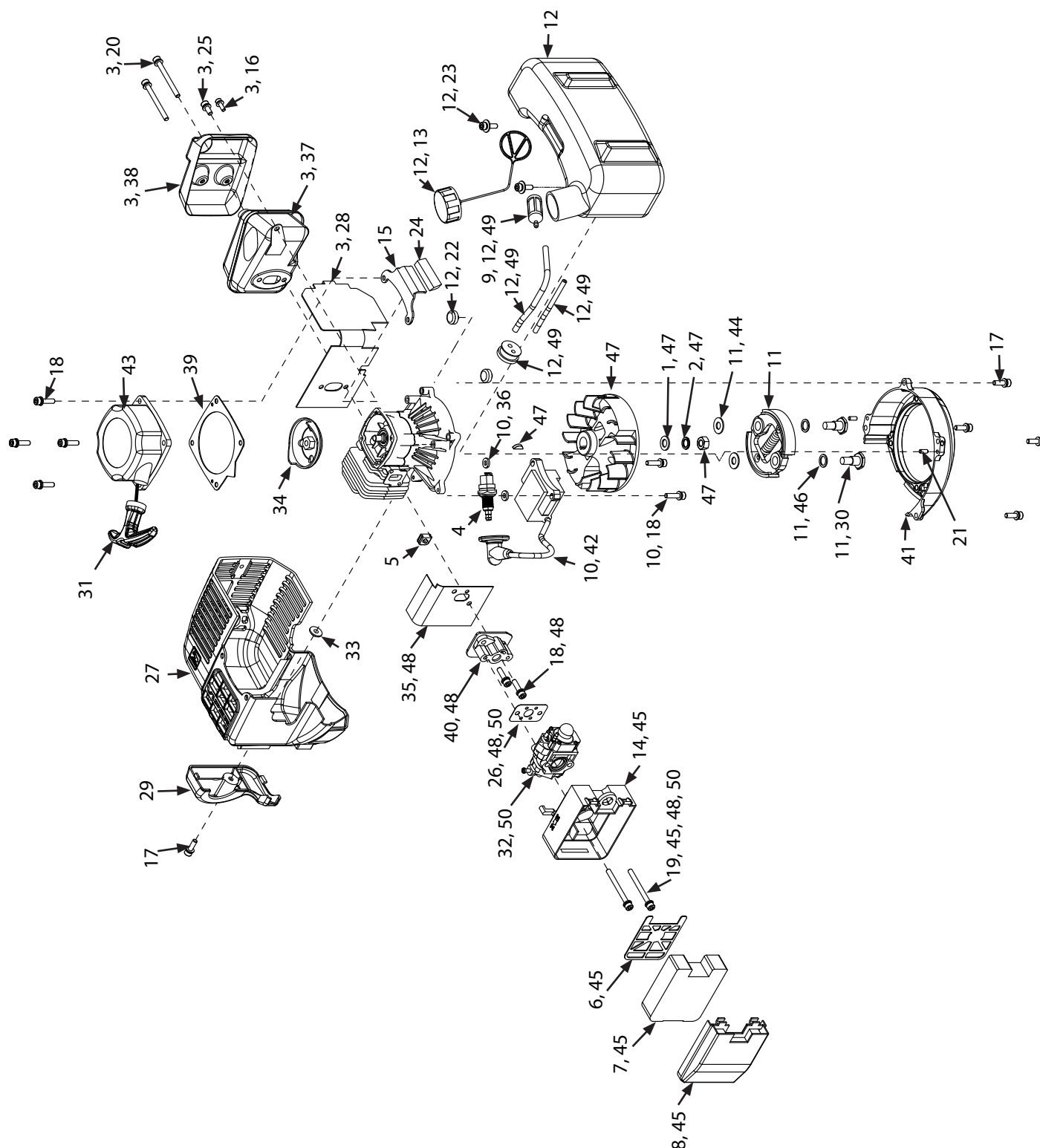
ENGLISH

FRENCH

S/N



ILLUSTRATED PARTS BREAKDOWN: Engine Assembly

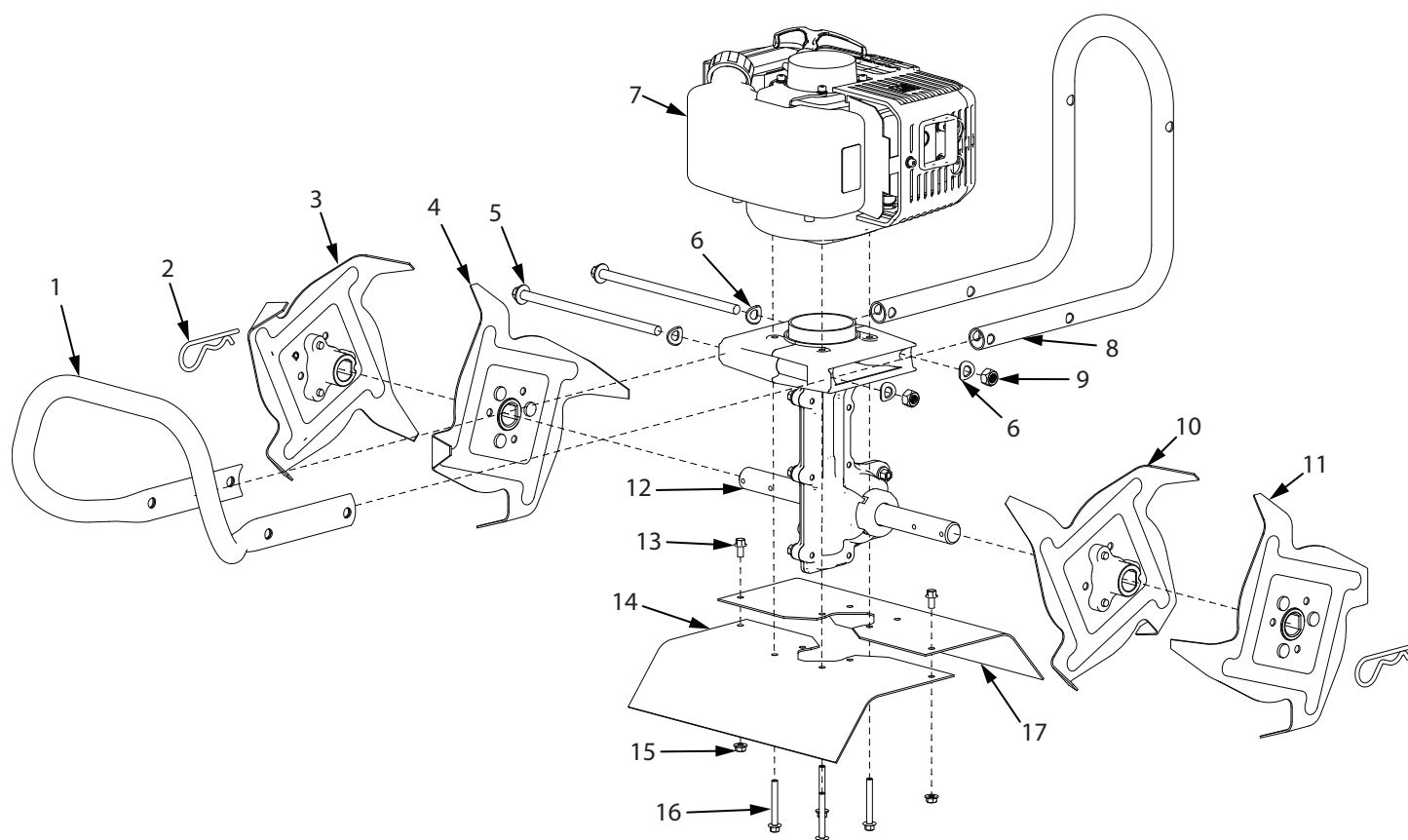


ILLUSTRATED PARTS LIST: Handlebar Assembly

ITEM #	PART #	DESCRIPTION	QTY
N.º DE ELEMENTO	N.º DE PIEZA	DESCRIPCIÓN	CANT.
1	20143	WASHER M8 X 1.6 X 1.5 MM	1
2	21640	WASHER M8 X 1.95 X 1.6 MM	1
3	31852	KIT MUFFLER	1
4	26102	SPARK PLUG L8RTC	1
5	26103	GROMMET SPARK PLUG	1
6	26114	AIR FILTER FRAME	1
7	26116	AIR FILTER BLOCK FOAM	1
8	26119	AIR FILTER COVER	1
9	26122	FUEL FILTER	1
10	31860	KIT IGNITION COIL	1
11	31856	KIT CLUTCH	1
12	31854	KIT GAS TANK	1
13	26128	GAS CAP	1
14	26138	AIR FILTER BASE ASSY	1
15	31835	GAS TANK BRACKET MOUNT	1
16	26202	BOLT M4 X 12 MM	1
17	26205	BOLT M5 X 16 MM	5
18	26207	BOLT M5 X 20 MM	8
19	26209	BOLT M5 X 55 MM	2
20	26210	BOLT M5 X 55 MM BLK OX	2
21	26212	STUD 4 X 8 MM	2
22	26215	SPACER 15 X 10 MM	2
23	23227	BOLT M5 X 16 MM	2
24	26121	BOOT FUEL TANK MOUNT	1
25	26867	BOLT M5 X 12 MM	1
26	31842	CARB GASKET	1
27	31796	ENGINE SHROUD	1
28	31797	MUFFLER HEAT SHIELD	1
29	31798	CAP ENGINE SHROUD	1
30	31799	BOLT M8 X 21.5 MM BLK OX	2
31	31800	RECOIL HANDLE	1
32	31801	CARBURETOR	1
33	31802	SPACER CAP ENGINE SHROUD	1
34	31806	RECOIL DRUM	1
35	31807	GASKET INTAKE	1
36	31808	SPACER IGNITION COIL	2

ITEM #	PART #	DESCRIPTION	QTY
N.º DE ELEMENTO	N.º DE PIEZA	DESCRIPCIÓN	CANT.
37	31810	MUFFLER	1
38	31811	COVER MUFFLER	1
39	31843	RECOIL SPACER	1
40	31821	WINDPIPE INTAKE	1
41	31822	SHROUD FLYWHEEL	1
42	31823	IGNITION COIL	1
43	31826	RECOIL ASSY	1
44	31827	WASHER M8 X 18 X 1.2 MM	2
45	31853	KIT AIR CLEANER	1
46	31831	WASHER WAVE 11 ID X 15 OD	2
47	31834	KIT FLYWHEEL	1
48	31866	KIT INTAKE MANIFOLD	1
49	27131	KIT FUEL LINE	1
50	31851	KIT CARBURETOR	1

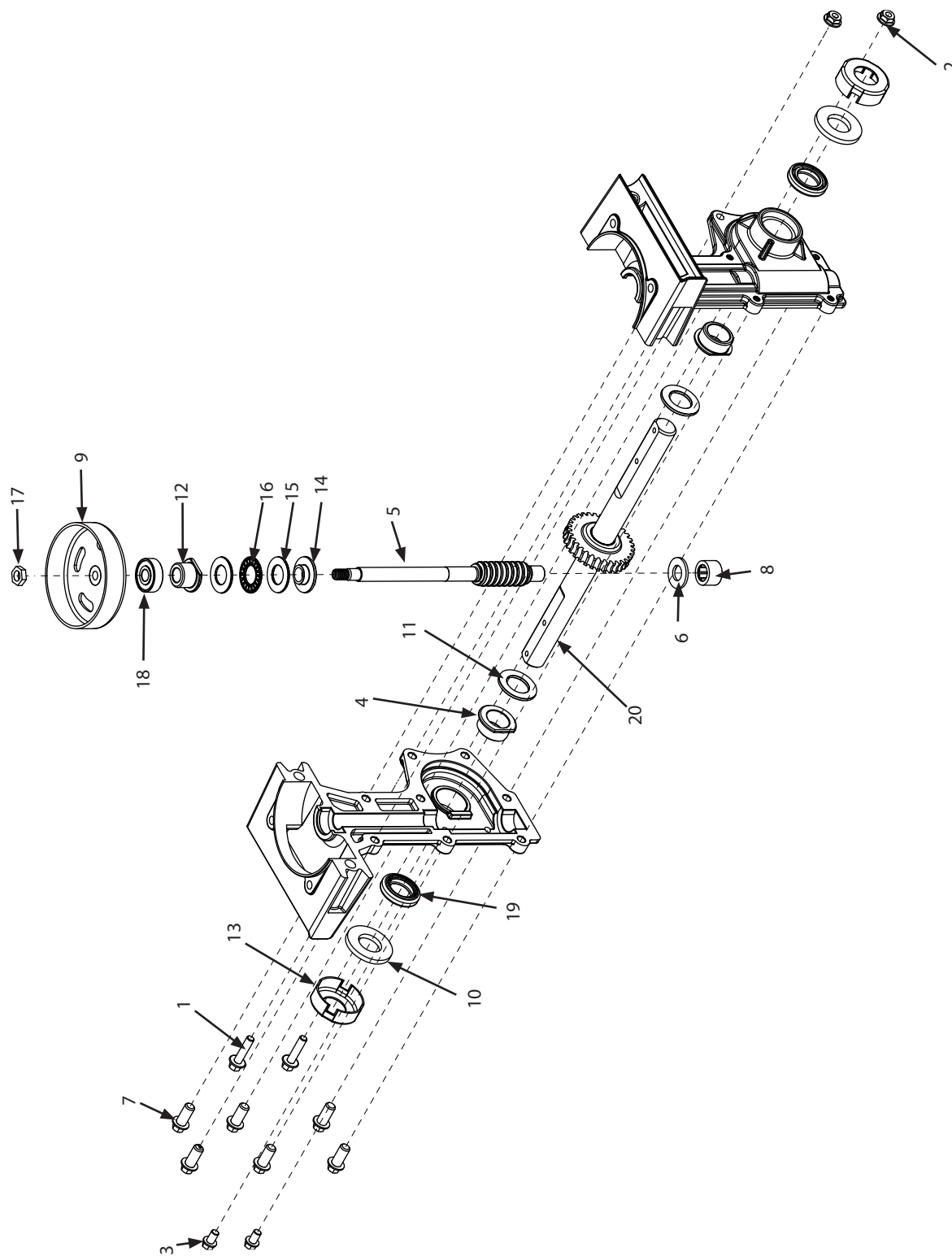
ILLUSTRATED PARTS BREAKDOWN: Hood & Tines Assembly



ILLUSTRATED PARTS LIST: Hood & Tines Assembly

ITEM #	PART #	DESCRIPTION	QTY
N.º DE ELEMENTO	N.º DE PIEZA	DESCRIPCIÓN	CANT.
1	24808	FRONT BUMPER BLACK	1
2	4652	COTTER PIN 5/8 X 3/4 IN	2
3	4604	TINE "D" ASSEMBLY	1
4	4602	TINE "C" ASSEMBLY	1
5	24513	BOLT M8 X 1.25 X 165 HEX HEAD	2
6	31560	WASHER M8 CURVED	4
7	31464	ENGINE 33CC VIPER	1
8	26794	HANDLEBAR LOWER BLACK	1
9	400023	NUT M8 X 1.25 NYLOCK	2
10	4603	TINE "B" ASSEMBLY	1
11	4601	TINE "A" ASSEMBLY	1
12	31544	TRANSMISSION ASSEMBLY	1
13	176	BOLT M5 X 0.8 X 10 HEX FLANGE	2
14	32218	TINE SHIELD FRONT	1
15	400020	NUT M5 X 0.8 NYLOCK FLANGE	2
16	25188	BOLT M5 X 0.8 X 40 HEX FLANGE	4
17	32219	TINE SHIELD BACK	1

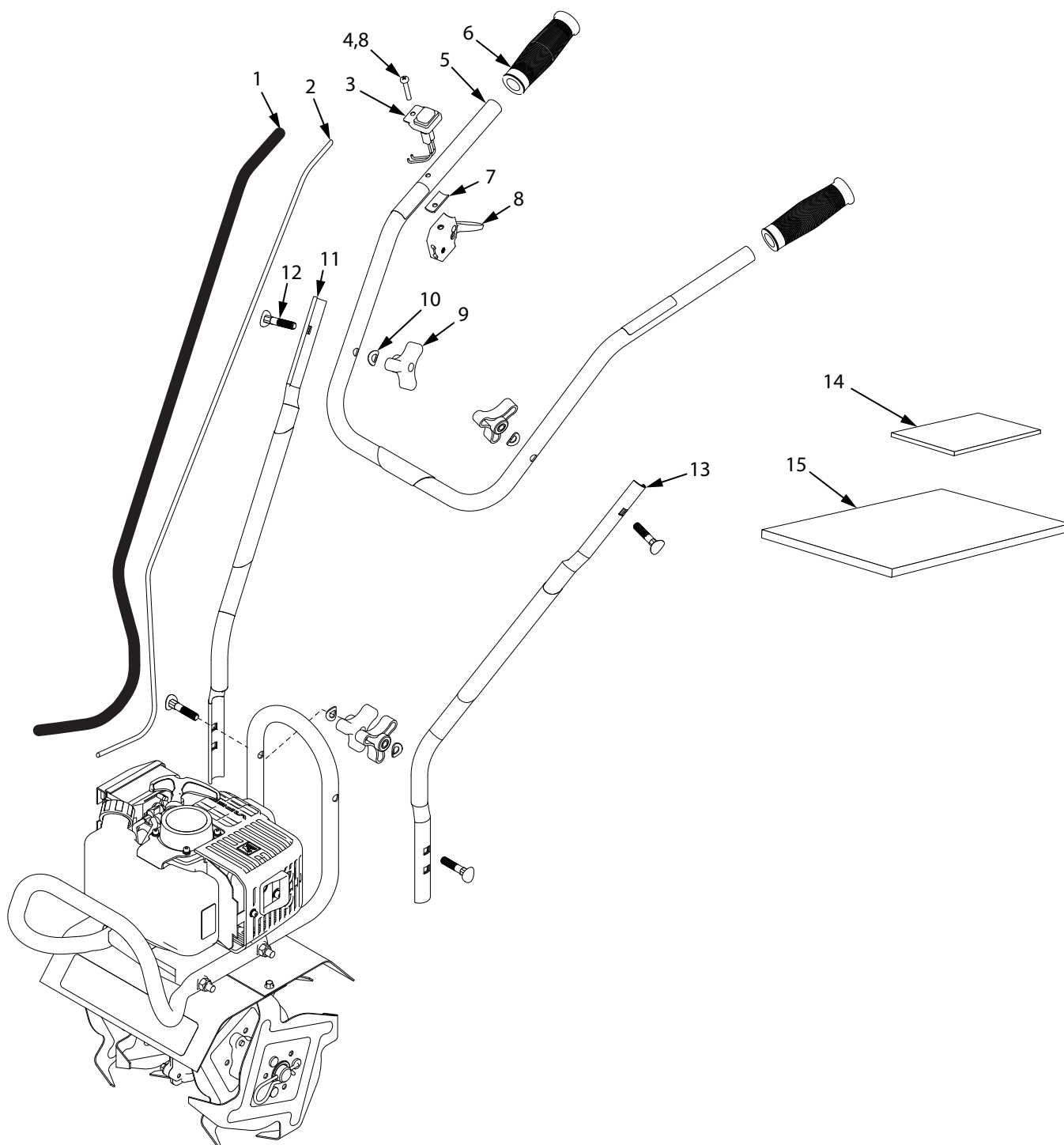
ILLUSTRATED PARTS BREAKDOWN: Transmission Assembly



ILLUSTRATED PARTS LIST: Transmission Assembly

ITEM #	PART #	DESCRIPTION	QTY
N.º DE ELEMENTO	N.º DE PIEZA	DESCRIPCIÓN	CANT.
1	13600	BOLT M6 X 25 MM GR8.8	2
2	4650	NUT M6	2
3	6263	BOLT M6 X 10	2
4	25159	BUSHING M19 ID X 25.5 OD	2
5	32015	WORM GEAR AND SHAFT	1
6	32016	SPACER BEARING 24 X 12 X 2 MM	1
7	32053	BOLT M6 X 18 MM GR8.8	6
8	32055	NEEDLE ROLLER BEARING 19 OD X 13 ID X 12	1
9	32077	CLUTCH DRUM ASSY 78 ID	1
10	4606	WASHER FIBER 19 X 38 X 4 MM	2
11	4610	SHIM TINE SHAFT 32 X 19 X 2.2 MM	2
12	4614	BUSHING M11 ID X 19 OD	1
13	46144	DUST CAP	2
14	4617	BEARING THRUST REDUCER M11 X 15 OD	1
15	4618	WASHER 15 X 28 X 1.5 MM	2
16	4619	BEARING THRUST 28 X 15 X 2 MM	1
17	4620	NUT M8	1
18	4623	BEARING BALL 9 X 26 MM DOUBLE SEALED	1
19	4646	SEAL SHAFT 19 MM	2
20	4651	SHAFT TINE ASSY	1

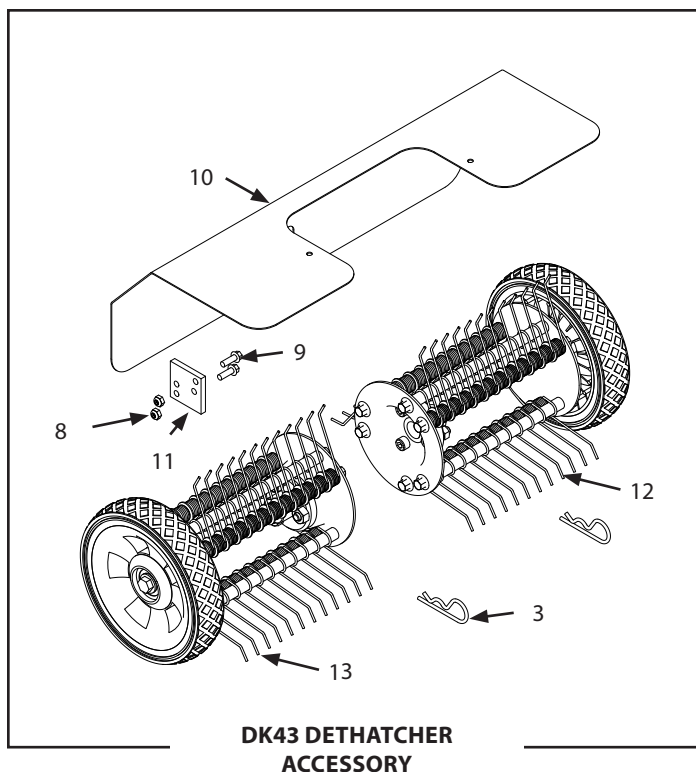
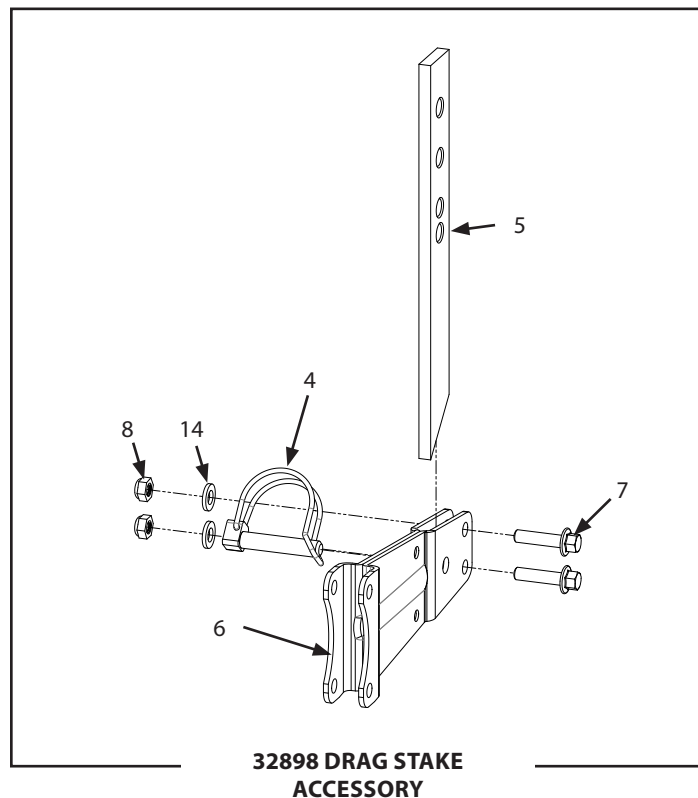
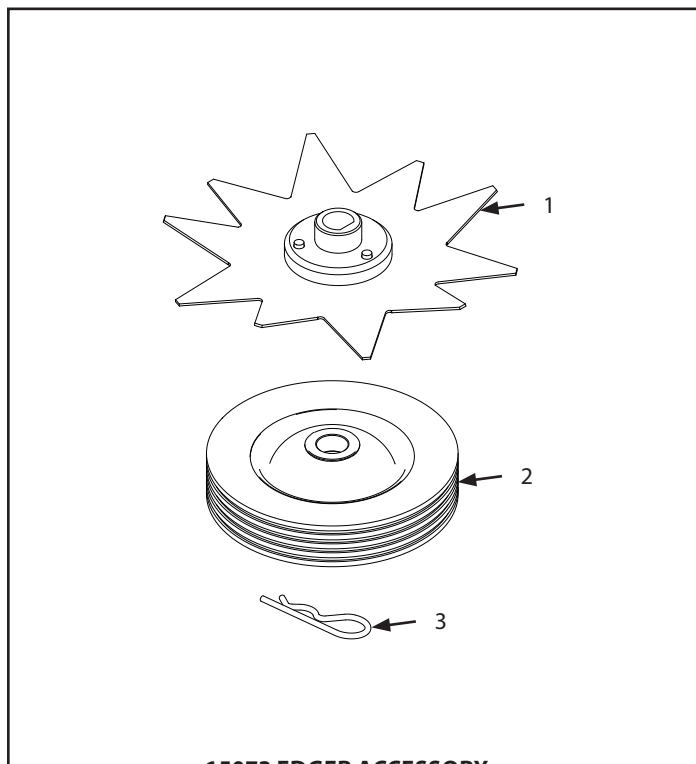
ILLUSTRATED PARTS BREAKDOWN: Handlebar Assembly



ILLUSTRATED PARTS LIST: Handlebar Assembly

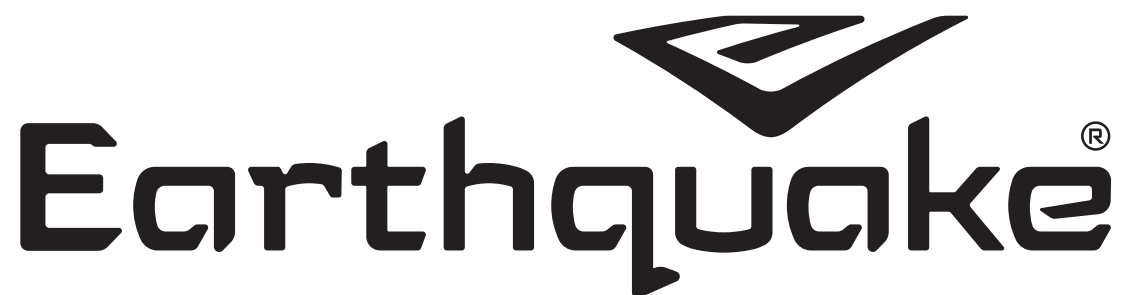
ITEM #	PART #	DESCRIPTION	QTY
N.º DE ELEMENTO	N.º DE PIEZA	DESCRIPCIÓN	CANT.
1	25440	SLEEVE CABLE PROTECTION	1
2	14645	THROTTLE CABLE SWIVEL FERRULE	1
3	26166	ON/OFF SWITCH ASSEMBLY	1
4	10888	BOLT M5 X 0.8 X 30 MM PHILLIPS	1
5	27136	KIT HANDLEBAR UPPER WITH WARNINGS	1
6	4639	HANDLEBAR GRIP 19.5 X 110 MM	2
7	12633	RUBBER PAD 15 X 29 MM	1
8	25988	KIT TRIGGER LONG THROW ASSEMBLY	1
9	25622	KNOB M8 X 1.25 THREE ARM BLACK	4
10	31560	WASHER M8 CURVED	4
11	24883	HANDLEBAR MIDDLE RIGHT BLACK	1
12	31565	BOLT M8 X 1.25 X 35 SADDLE HEAD	4
13	24884	HANDLEBAR MIDDLE LEFT BLACK	1
14	31566	PARTS BAG HARDWARE	1
15	31469	PARTS BAG MANUAL	1

ILLUSTRATED PARTS BREAKDOWN: Optional Accessories



ITEM #	PART #	DESCRIPTION	QTY
N.º DE ELEMENTO	N.º DE PIEZA	DESCRIPCIÓN	CANT.
1	15009	BORDER EDGER TINE	1
2	46131	BORDER EDGER WHEEL	1
3	46134	HAIRPIN	3
4	18039	LOCKPIN 8 X 40 MM	1
5	4600	DRAG STAKE	1
6	31657	DRAG STAKE MOUNT	1
7	4649	BOLT M6 X 1 X 25 MM HEX	2
8	4650	NUT M6 NYLOCK	4
9	4647	BOLT M6 X 1 X 18 MM HEX	2
10	4710	DETHATCHER SHIELD	1
11	4676	EXTENSION PLATE	1
12	4707	DETHATCHER ASSY LEFT	1
13	4708	DETHATCHER ASSY RIGHT	1
14	26651	WASHER M6 X 12 X 1.6 MM	2

This image shows a single sheet of white paper with horizontal ruling lines. The lines are evenly spaced and run across the width of the page. There are no margins, text, or other markings on the paper.



ARDISAM, INC.
1160 Eighth Avenue
PO Box 755
Cumberland, WI 54829

Phone: (800) 345-6007
Fax: (715) 822-2124
www.GetEarthquake.com