



Illustrated Parts Breakdown

M200
String Mower

Model #: M200

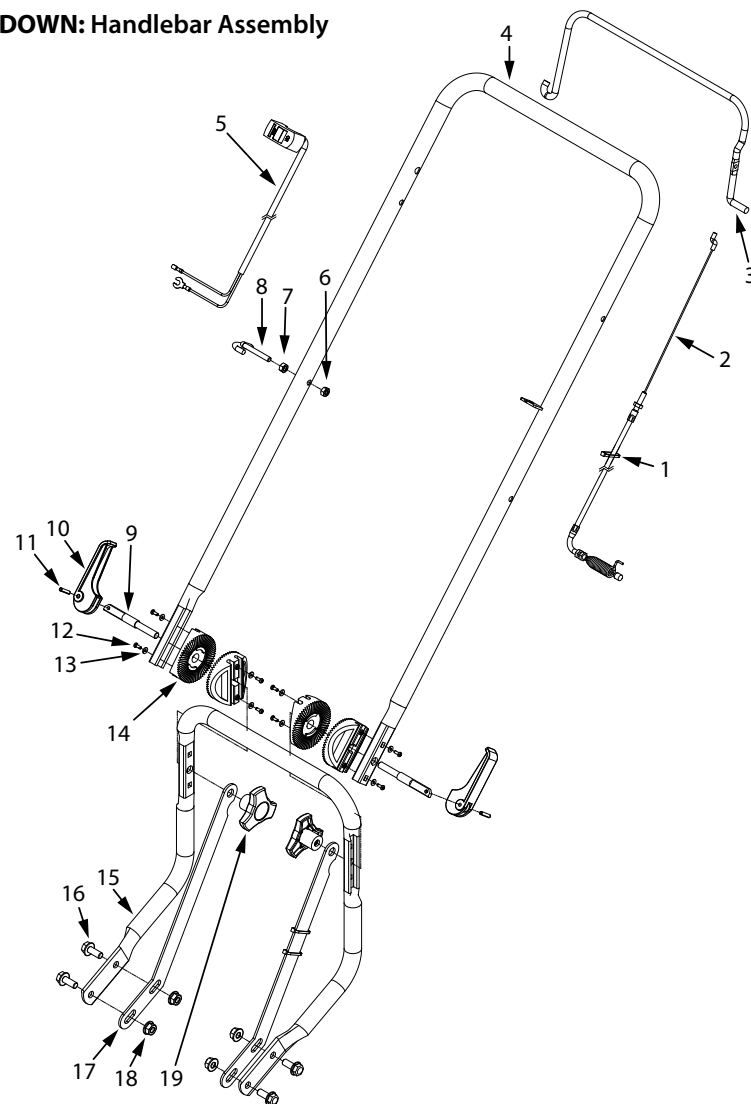
ENGLISH

FRENCH

S/N



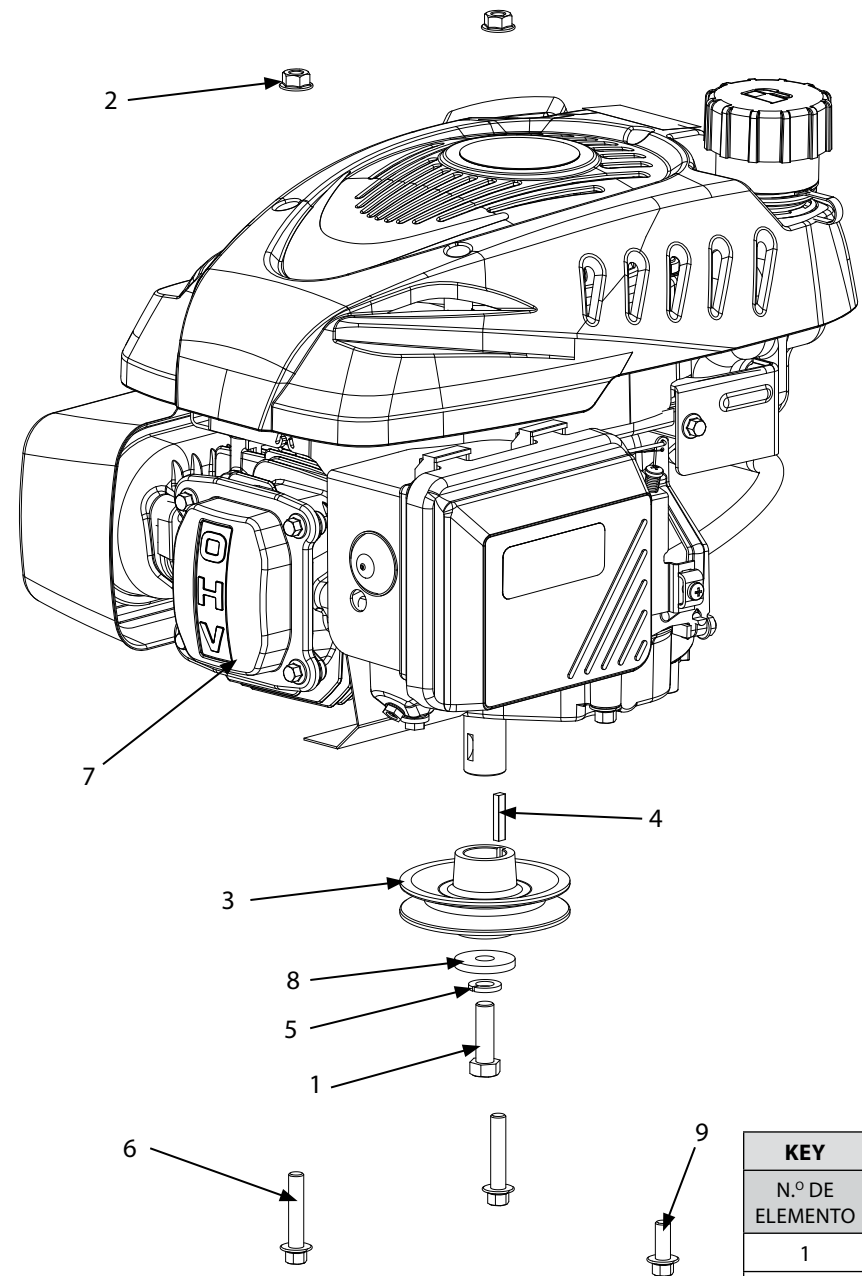
ILLUSTRATED PARTS BREAKDOWN: Handlebar Assembly



KEY	PART #	DESCRIPTION	QTY.
N.º DE ELEMENTO	N.º DE PIEZA	DESCRIPCIÓN	CANT.
1	106	ZIP TIE 5.75 INCH	3
2	17527	CLUTCH CABLE STRING MOWER	1
3	17528	CONTROL LEVER	1
4	17526	UPPER HANDLEBAR	1
5	17471	ON/OFF SWITCH STRING MOWER	1
6	W1265V0913	NUT M6	1
7	19939	NUT M6	1
8	19902	ROPE GUIDE M6 X 1.0 OPEN EYE	1

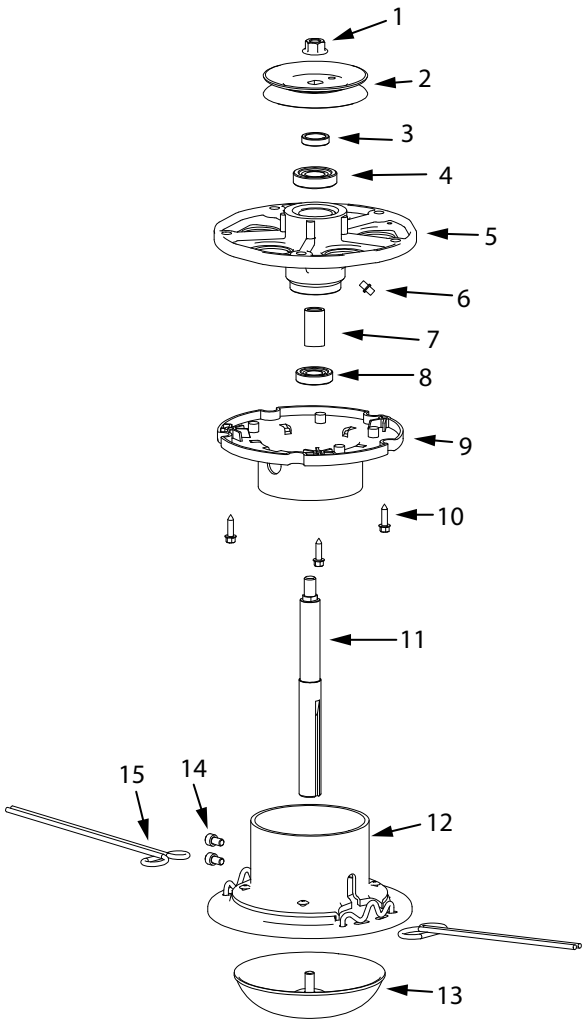
KEY	PART #	DESCRIPTION	QTY.
N.º DE ELEMENTO	N.º DE PIEZA	DESCRIPCIÓN	CANT.
9	16311	HANDLE ADJUST BOLT M8	2
10	19972	CAM LEVER	2
11	19973	RIVET M4 X 20	2
12	16397	SCREW M3 X 10	8
13	16360	WASHER M3	8
14	19912	HANDLE PIVOT	4
15	19941	LOWER HANDLEBAR	1
16	19945	BOLT M8 X 20	4
17	18893	HANDLEBAR BRACE	2
18	64132	NUT M8	4
19	13601	KNOB M8 THREE STAR	2

ILLUSTRATED PARTS BREAKDOWN: Engine and Pulley Assembly



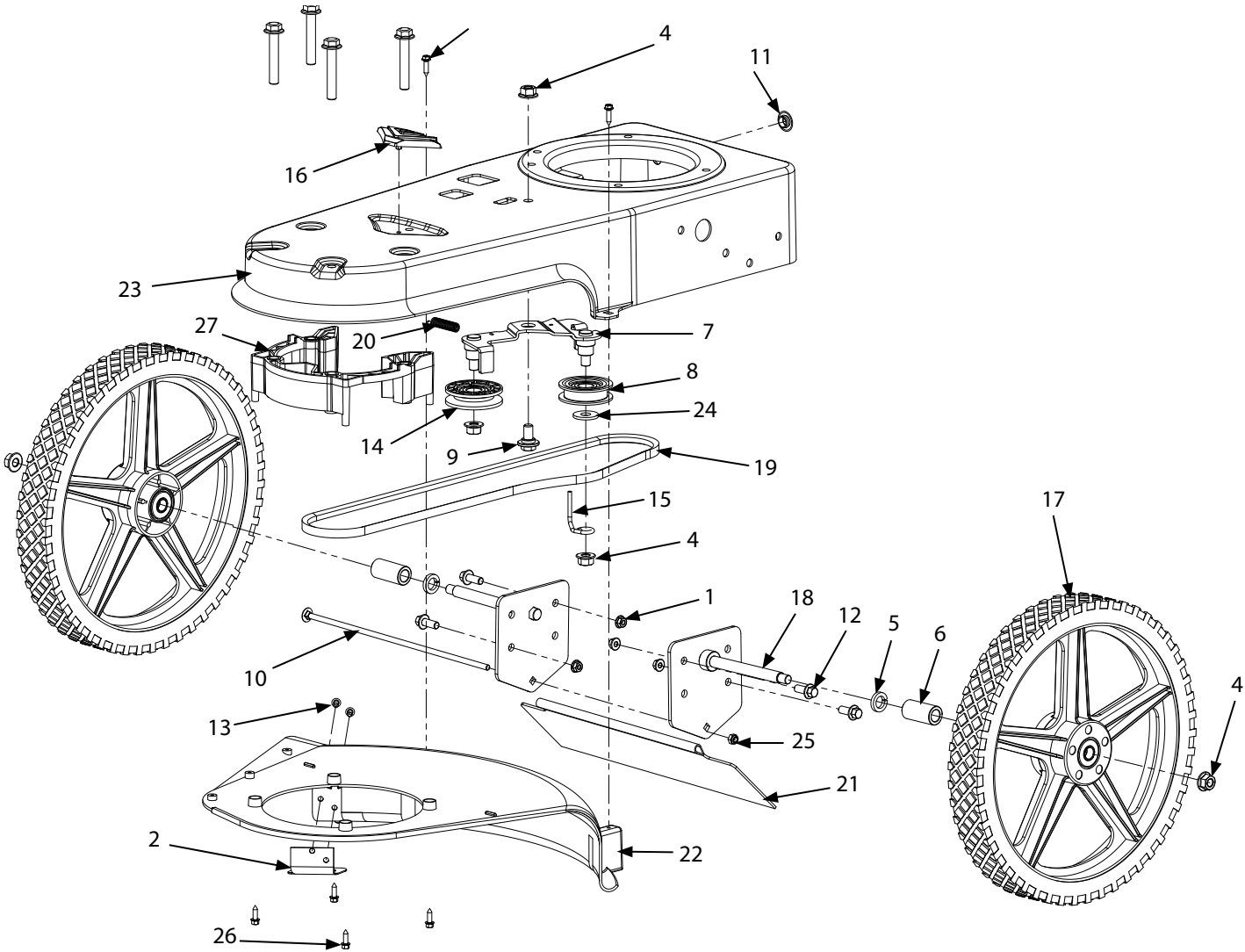
KEY	PART #	DESCRIPTION	QTY.
N.º DE ELEMENTO	N.º DE PIEZA	DESCRIPCIÓN	CANT.
1	1426	BOLT 3/8-16 X 1-1/4	1
2	16400	NUT M8	3
3	29610	ENGINE PULLEY	1
4	16602	KEY 4M X 5M	1
5	1916965	WASHER 3/8 IN	1
6	19922	BOLT M8 X 40	2
7	186000	ENGINE 173CC RV170	1
8	331040	WASHER M10	1
9	19945	BOLT M8 X 20	1

ILLUSTRATED PARTS BREAKDOWN: Mower Head - Standard Version



KEY	PART #	DESCRIPTION	QTY.
N.º DE ELEMENTO	N.º DE PIEZA	DESCRIPCIÓN	CANT.
1	16903	NUT M10	1
2	16595	PULLEY	1
3	19925	SPACER M17.5 X 23.5 X 6	1
4	19966	BEARING 17 X 40 X 12 MM	1
5	16317	JACKSHAFT HOUSING	1
6	16598	GREASE FITTING M6 X 1.0	1
7	19960	JACKSHAFT SPACER	1
8	19959	BEARING 17 X 35 X 10 MM	1
9	16337	WEED WRAP GUARD	1
10	16779	BOLT M5 X 20	3
11	19928	JACKSHAFT	1
12	19924	CUTTER HEAD	1
13	19923	BUMP HEAD	1
14	19919	BOLT M6 X 10	2
15	21884	LINE 0.155 INCH	1

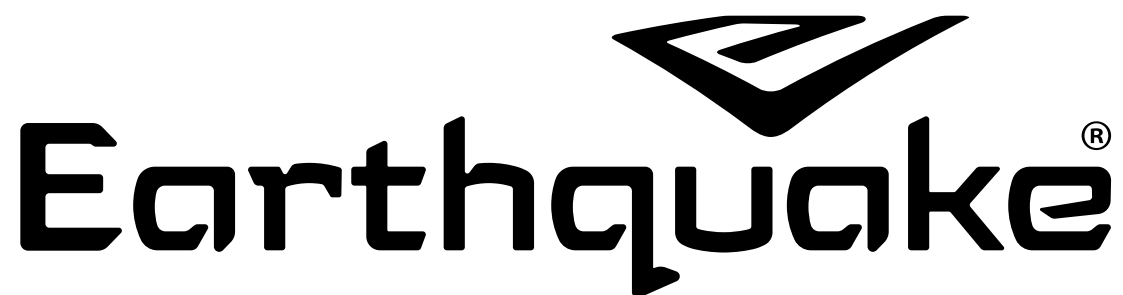
ILLUSTRATED PARTS BREAKDOWN: Base Unit



KEY	PART #	DESCRIPTION	QTY.
N.º DE ELEMENTO	N.º DE PIEZA	DESCRIPCIÓN	CANT.
1	16400	NUT M8	4
2	16540	LINE CUTTER	1
3	16889	SCREW 4.8-1.6 X 20	2
4	16903	NUT M10	5
5	18898	WASHER M14	2
6	19904	WHEEL SPACER	2
7	19932	IDLER PULLEY BRACKET	1
8	19934	PULLEY	1
9	19936	BOLT M10 X 20	1
10	19937	BOLT M6 X 285	1
11	19944	BUSHING	1
12	19945	BOLT M8 X 20	4
13	19953	RIVET M5 X 10	2
14	19968	IDLER PULLEY	1
15	25038	BELT GUIDE	1
16	30995	EARTHQUAKE E BADGE	1
17	18773	WHEEL	2
18	19938	AXLE	2
19	60005003	BELT 10 X 1160 TYPE 3L	1
20	60005008	SPRING	1
21	60005018	TRAILING SHIELD	1
22	60005021	SHIELD	1
23	60005058	DECK	1
24	W1200126	WASHER M10	1
25	W1265V0913	NUT M6 X 1.0 HNYLK GR8.8 ZN	1
26	19931	SCREW M5 X 15	4
27	16318	JACKSHAFT SPACER	1

NOTES:

This image shows a single sheet of white paper with horizontal blue or grey ruling lines. The lines are evenly spaced and run across the width of the page. There are approximately 20 lines visible. The paper has a slight shadow on the right side, suggesting it's resting on a surface. There is no handwriting or other markings on the paper.



ARDISAM, INC.
1160 Eighth Avenue
PO Box 755
Cumberland, WI 54829

Phone: (800) 345-6007
Fax: (715) 822-2124
www.GetEarthquake.com