

# VIPER<sup>®</sup>

## ENGINES

Illustrated Parts Breakdown

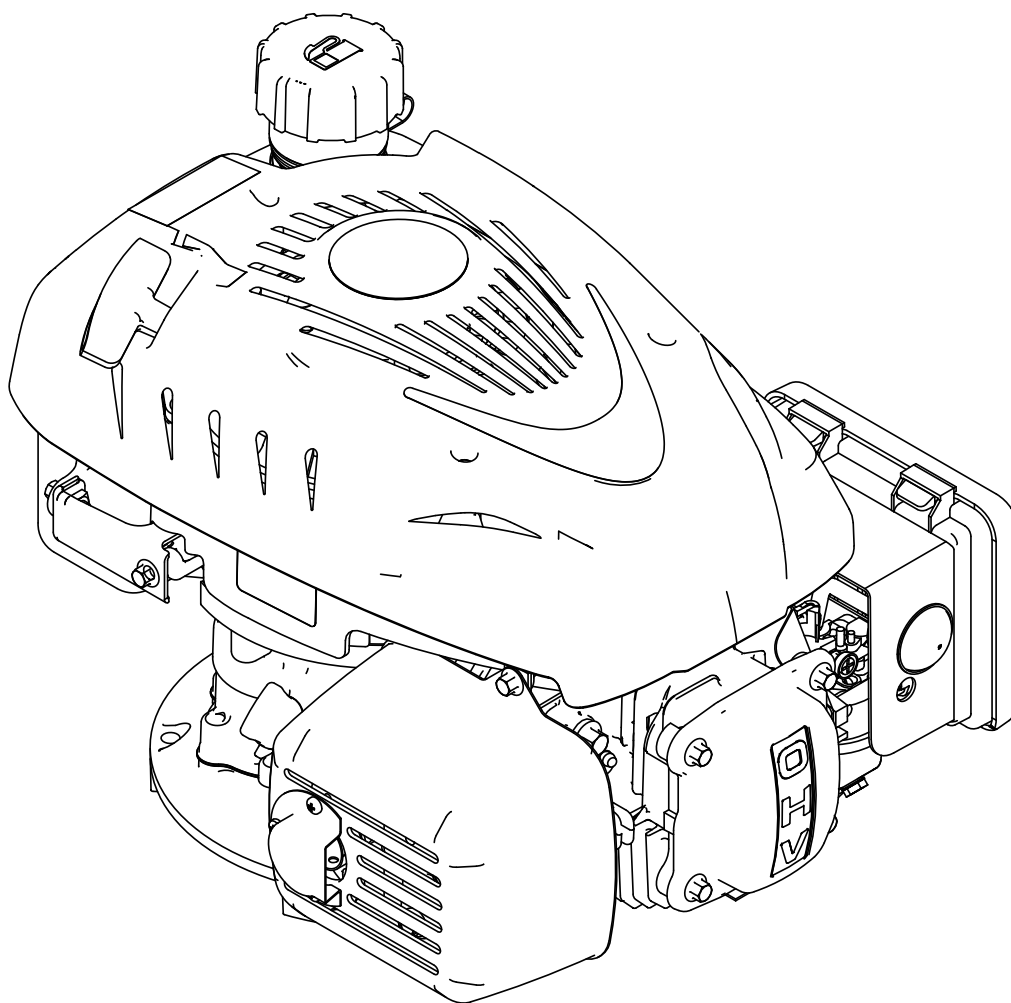
**173CC 4-CYCLE**  
Viper Engine

**Model #: 186000**

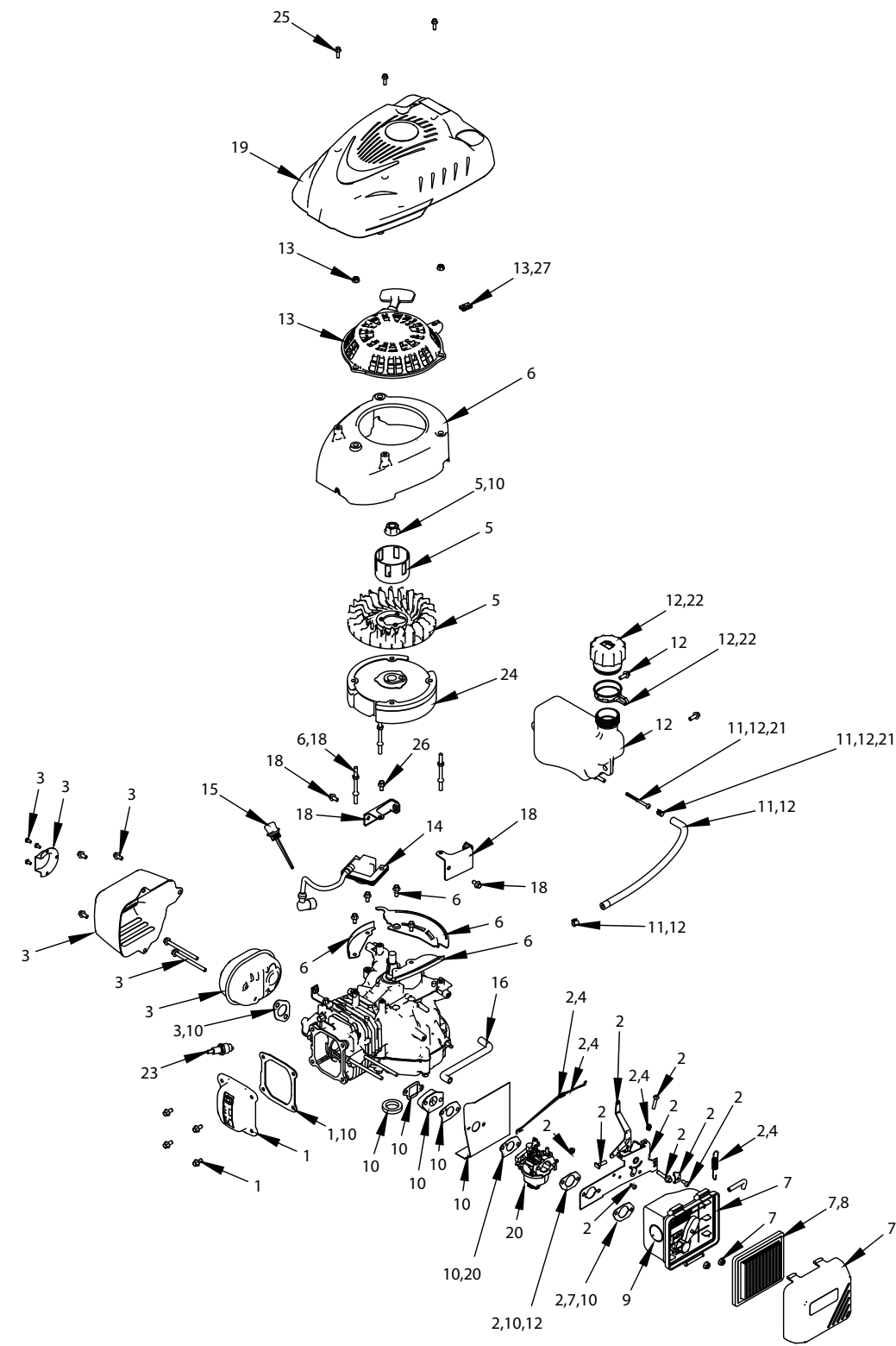
ENGLISH

FRENCH

S/N



ILLUSTRATED PARTS BREAKDOWN



REF NO.	PART NO.	DESCRIPTION	QTY.
N.º DE ELEMENTO	N.º DE PIEZA	DESCRIPCIÓN	CANT.
1	11211	KIT VALVE COVER	1
2	11228	KIT THROTTLE REPLACEMENT	1
3	11989	KIT MUFFLER	1
4	11216	KIT THROTTLE CONTROL SPRINGS	1
5	11217	KIT STARTER CUP AND FAN	1
6	11218	KIT BLOWER HOUSING	1
7	11993	KIT AIR CLEANER COMPLETE	1
8	10905	FILTER ELEMENT AIR CLEANER	1
9	11933	PRIMER BULB	1
10	11225	KIT ENGINE GASKETS	1
11	11226	KIT FUEL LINE AND FILTER	1
12	11935	KIT FUEL TANK REPLACEMENT	1
13	11366	KIT RECOIL AND HARDWARE	1
14	10915	IGNITION COIL	1
15	11051	DIPSTICK WITH SEAL	1
16	11009	BREATHER TUBE	1
18	11232	KIT MOUNTING BRACKETS AND RODS	1
19	10871	ENGINE SHROUD	1
20	11987	KIT CARBURETOR REPLACEMENT	1
21	11008	FUEL FILTER	1
22	11910	FUEL CAP EPA III COMPLIANT	1
23	11994	SPARK PLUG DK7RTC	1
24*	--	FLYWHEEL	
25*	--	BOLT M5 X 0.8 X 16 MM HHF GR8.8 ZN	
26*	--	BOLT M6 X 1.0 X 12 HHF GR8.8 ZN	
27*	--	CLIP NUT	
28	14615	ALTITUDE KIT 3,000-6,000 FT	1
29	14616	ALTITUDE KIT 6,000-8,000 FT	1
30	186000	ENGINE 173CC VERTICAL SHAFT	1

\* Parts not available for service

# **VIPER<sup>®</sup>**

## **ENGINES**

**ARDISAM, INC.**  
1160 Eighth Avenue  
PO Box 755  
Cumberland, WI 54829

Phone: (800) 345-6007  
Fax: (715) 822-2124  
[www.Ardisam.com](http://www.Ardisam.com)