



Illustrated Parts Breakdown

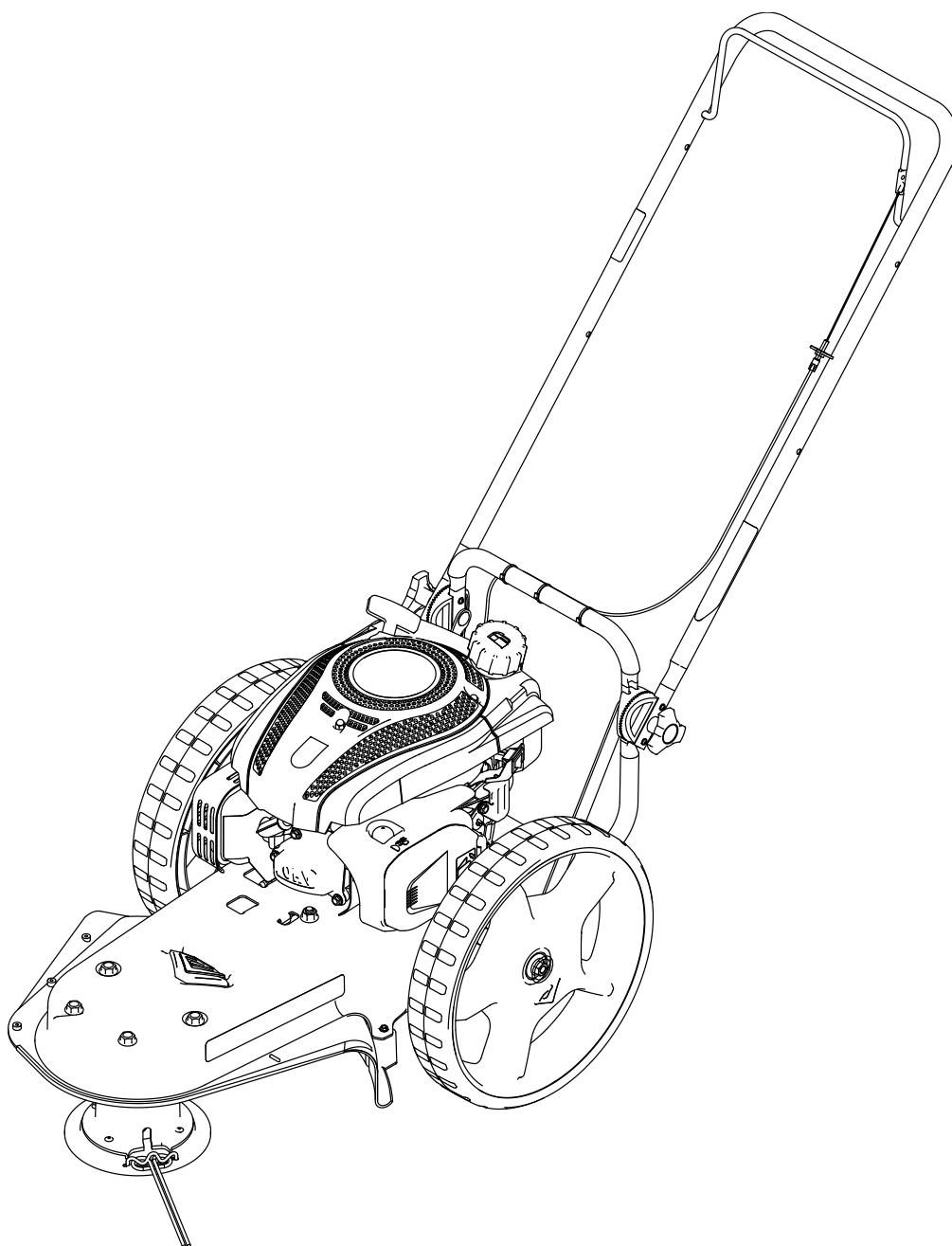
28463
String Mower

Model #: 28463

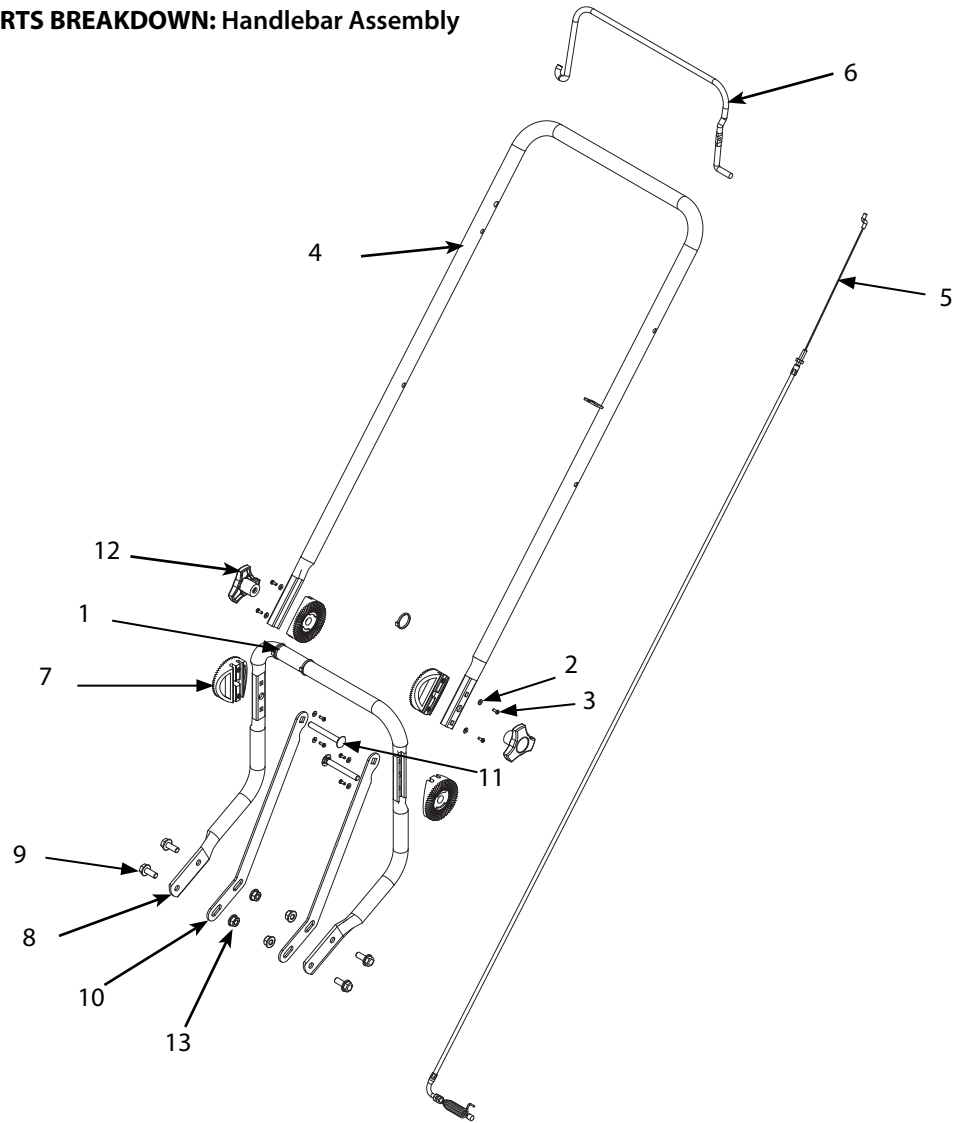
ENGLISH

FRENCH

S/N



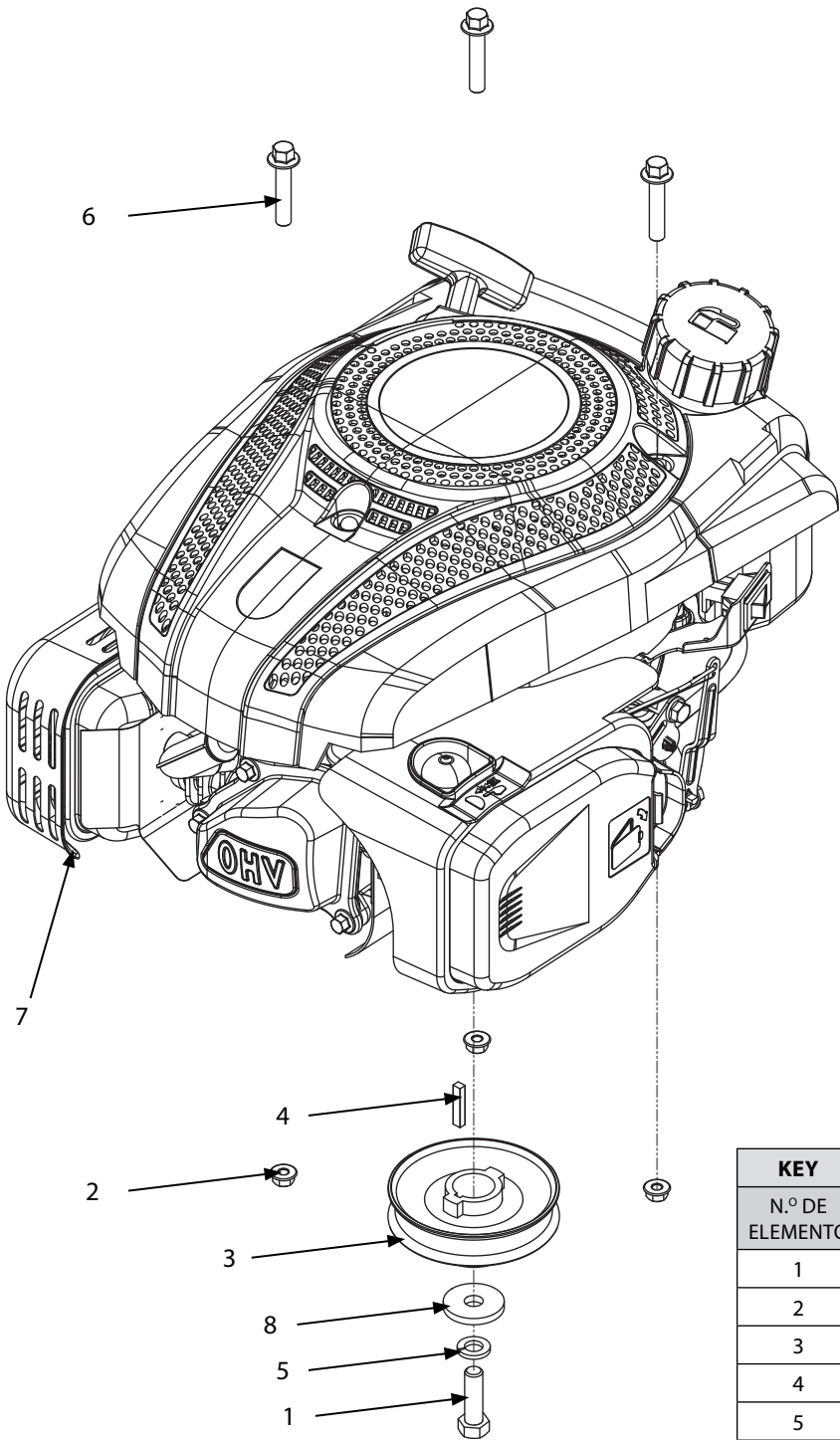
ILLUSTRATED PARTS BREAKDOWN: Handlebar Assembly



KEY	PART #	DESCRIPTION	QTY.
N.º DE ELEMENTO	N.º DE PIEZA	DESCRIPCIÓN	CANT.
1	106	ZIP TIE 5.75 IN	3
2	16360	WASHER M3	8
3	16397	SCREW M3-10	8
4	17526	UPPER HANDLEBAR	1
5	17527	CABLE	1
6	17528	ENGAGEMENT LEVER	1
7	19912	HANDLE PIVOT	4
8	19941	LOWER HANDLEBAR	1

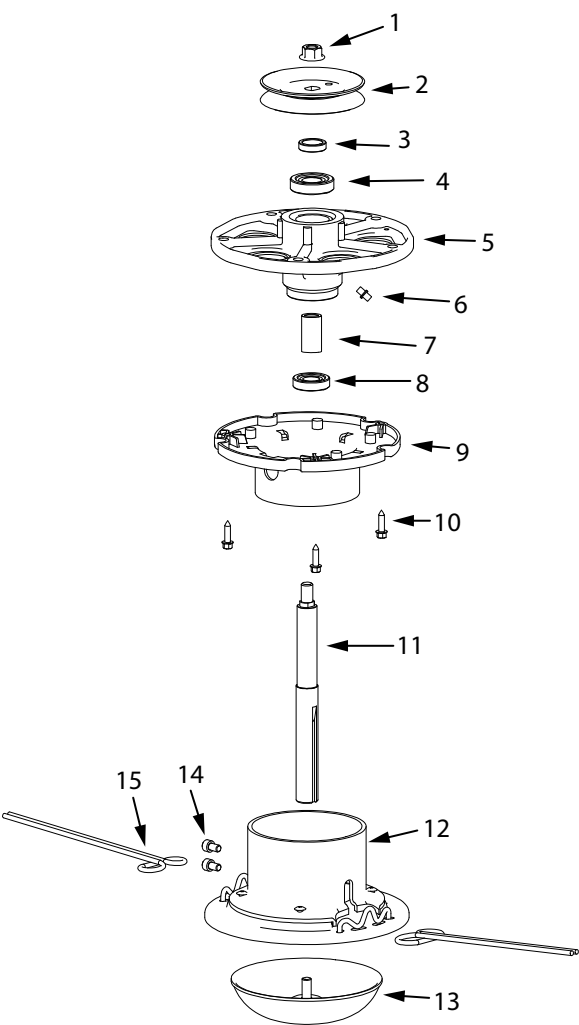
KEY	PART #	DESCRIPTION	QTY.
N.º DE ELEMENTO	N.º DE PIEZA	DESCRIPCIÓN	CANT.
9	19945	BOLT M8 X 20	4
10	27683	HANDLEBAR BRACE	2
11	27800	BOLT M8 X 65	2
12	28354	KNOB	2
13	64132	NUT M8	4

ILLUSTRATED PARTS BREAKDOWN: Engine and Pulley Assembly



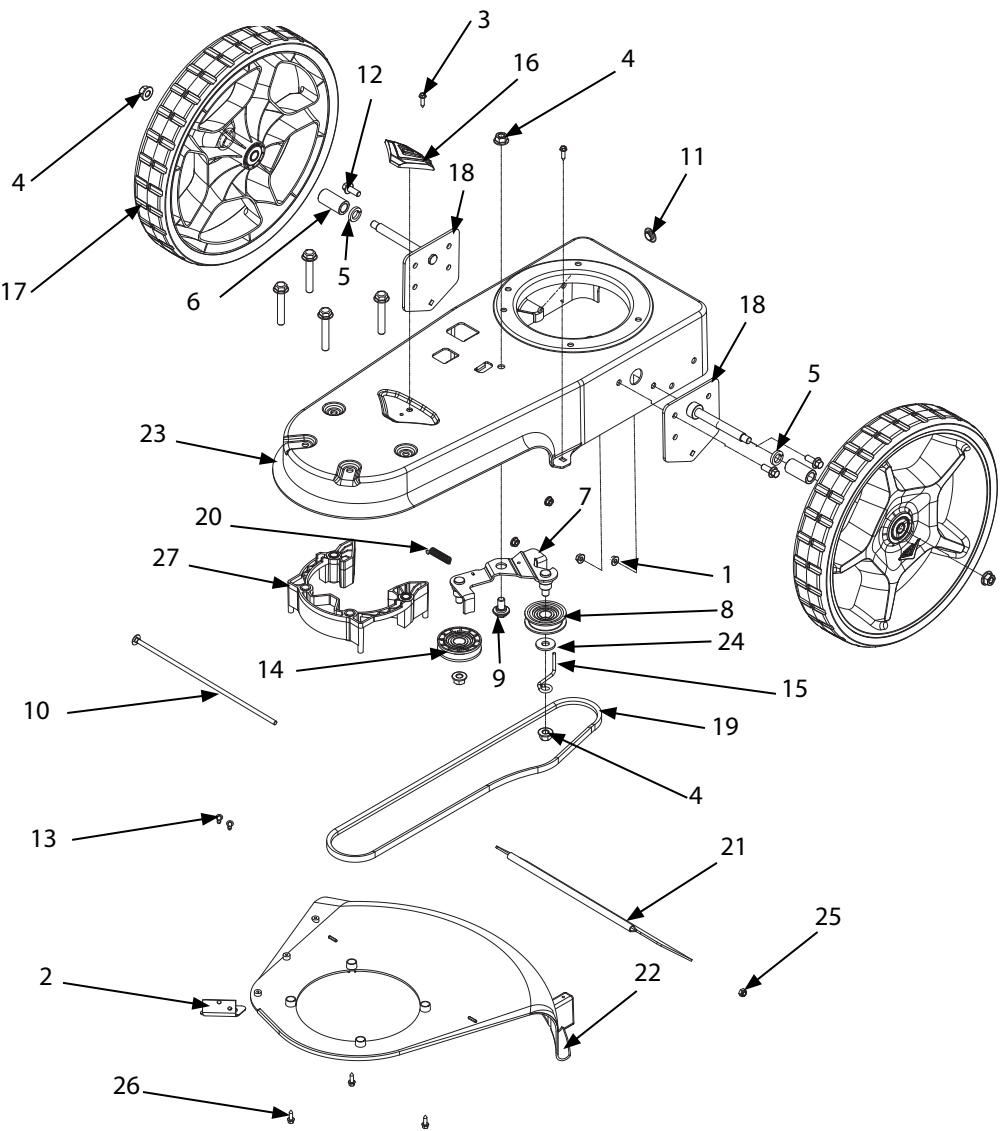
KEY	PART #	DESCRIPTION	QTY.
N.º DE ELEMENTO	N.º DE PIEZA	DESCRIPCIÓN	CANT.
1	1426	BOLT 3/8-16 X 1-1/4	1
2	16400	NUT M8	3
3	29610	ENGINE PULLEY	1
4	16602	KEY 4M X 5M	1
5	1916965	WASHER 3/8 IN	1
6	19922	BOLT M8 X 40	3
7	27787	ENGINE 150CC RV150	1
8	331040	WASHER M10	1

ILLUSTRATED PARTS BREAKDOWN: Mower Head



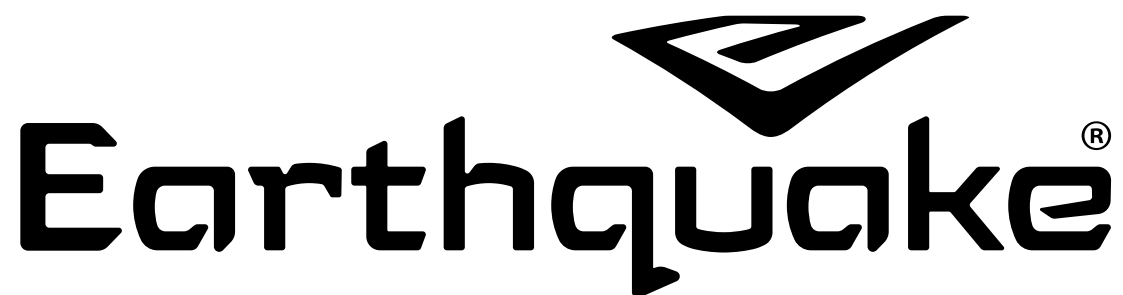
KEY	PART #	DESCRIPTION	QTY.
N.º DE ELEMENTO	N.º DE PIEZA	DESCRIPCIÓN	CANT.
1	16903	NUT M10	1
2	16595	PULLEY	1
3	19925	SPACER M17.5 X 23.5 X 6	1
4	19966	BEARING 17 X 40 X 12 MM	1
5	16317	JACKSHAFT HOUSING	1
6	16598	GREASE FITTING M6 X 1.0	1
7	19960	JACKSHAFT SPACER	1
8	19959	BEARING 17 X 35 X 10 MM	1
9	16337	WEED WRAP GUARD	1
10	16779	BOLT M5 X 20	3
11	19928	JACKSHAFT	1
12	19924	CUTTER HEAD	1
13	19923	BUMP HEAD	1
14	19919	BOLT M6 X 10	2
15	21884	LINE 0.155 INCH	1

ILLUSTRATED PARTS BREAKDOWN: Base Unit



Earthquake®

This image shows a single sheet of white paper with horizontal ruling lines. The lines are evenly spaced and run across the width of the page. There are no margins, text, or other markings on the paper.



ARDISAM, INC.
1160 Eighth Avenue
PO Box 755
Cumberland, WI 54829

Phone: (800) 345-6007
Fax: (715) 822-2124
www.GetEarthquake.com