

## Tow Bar Kit Installation Instructions:

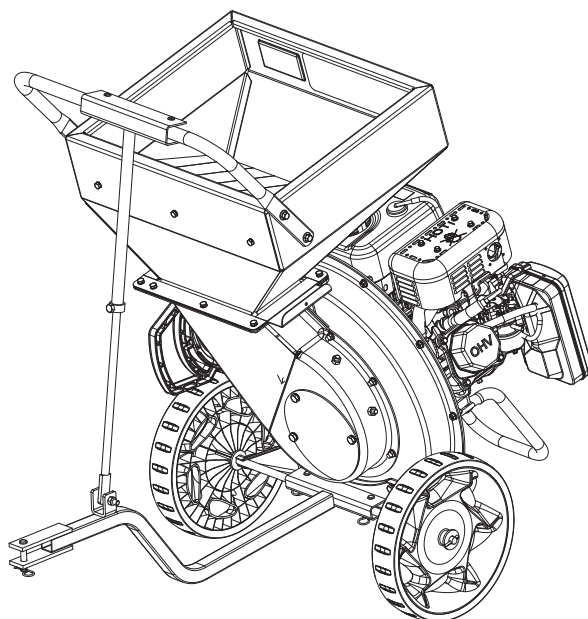
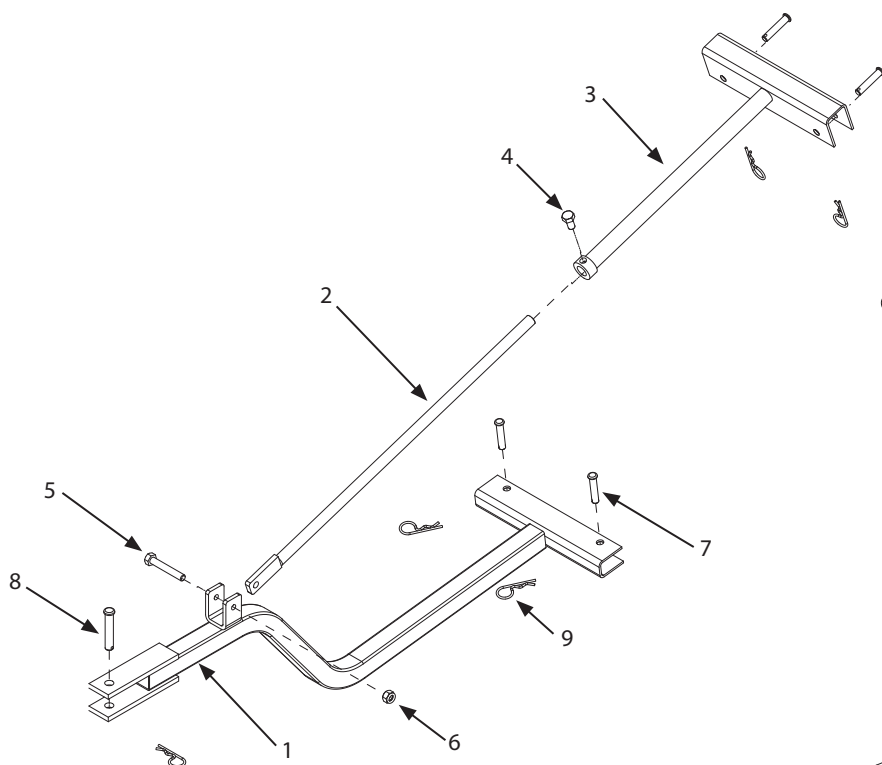
1. Position item 3 over handle and install two lock pins (7) and two hair pins (9).
2. Adjust length of item 2 by loosening item 4 to allow rod to slide freely.
3. Position item 1 over axle and install two lock pins (7) and two hair pins (9).
4. Fix length of item 2 by tightening item 4.



### CAUTION

FOR THE SAFETY OF THE USER, AND TO MAXIMIZE THE LIFE OF THE ENGINE, NEVER OPERATE OR ALLOW ENGINE TO RUN WHILE TOW BAR IS CONNECTED TO THE TOW VEHICLE. DOING SO CAN CAUSE ENGINE TO BE DAMAGED FROM LACK OF OIL.

CHIPPER MUST BE OPERATED ON LEVEL GROUND ONLY.



| ITEM # | PART #  | DESCRIPTION                          | QTY. |
|--------|---------|--------------------------------------|------|
| 1      | 1713352 | BENT ARM ASSEMBLY, TOW BAR           | 1    |
| 2      | 1713414 | ROD ASSEMBLY-TOW VAR SWING ARM       | 1    |
| 3      | 1713357 | ROD HOLDER ASSY-TOW BAR              | 1    |
| 4      | 1925205 | BOLT 5/16-18 5/8 HHCS GR5            | 1    |
| 5      | 1423B   | BOLT 5/16-18 X 2 HHCS GR5 BLK ZN     | 1    |
| 6      | 1919438 | NUT 5/16-18 NYLOCK BLK ZN            | 1    |
| 7      | 1710726 | PIN-CLEVIS .308DIA X 1.500LG .438DIA | 4    |
| 8      | 118053  | PIN-RND HD DRILLED .375 X 2.000      | 1    |
| 9      | 1918196 | PIN-QUICK .091DIA WIRE 1.875LG       | 5    |

P/N: 1713362

ECN: 10854

REV4: 06/02/15

© 2015 Ardisam, Inc.  
All Rights Reserved