

INSTALLATION

1. Remove the rotor housing cover, retain the bolts. **FIGURE 1**
2. Replace the cover with the adapter (1) using the bolts removed in step one and the washers (13). **FIGURE 1**
3. Twist the coupler (2) onto the end of the hose (4), insert the coupler into the adapter by aligning the arrows (or seams) running along the top of the coupler with those on the adapter. Push fully in and turn until it snaps into place. **FIGURE 1**

NOTE: Insert plug (3) into adapter when vacuum attachment is not in use. **FIGURE 1**

4. Connect the handle to the nozzle (6) using the bolt (10), two washers (11) and nut (12). **FIGURE 1**
5. Thread the nozzle (6) to the hose. **FIGURE 1**
6. Close damper at the base of the hopper. **FIGURE 3**
7. Secure the cone cover over the cone opening. **FIGURE 2**

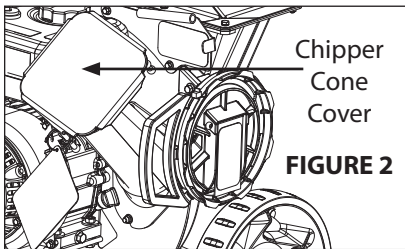


FIGURE 2

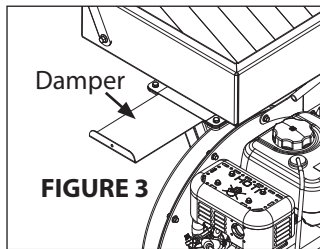


FIGURE 3

| ITEM # | PART # | DESCRIPTION | QTY. |
|--------|---------|--|------|
| 1 | 1021100 | ADAPTER 4IN VAC COL HOSE | 1 |
| 2 | 1023100 | COUPLER VAC COL HOSE TO ADAPTER 2C 3 | 1 |
| 3 | 1025100 | CAP PLUG 4IN VOL HOSE 2C HOSE 2C 3C 5C | 1 |
| 4 | 1035100 | HOSE VAC COL 4.00DIA X 10 FT LG 5C | 1 |
| 6 | 1030100 | NOZZLE VAC COL FOR 5C CHIPPERS | 1 |
| 7 | 1024100 | RING PLASTIC 5IN DIA 3IN LG NOTCHED | 1 |
| 8 | 1026100 | HANDLE VAC COL 0.75IN DIA TUBE | 1 |
| 9 | 1028100 | GRIP HANDLE 10IP BLACK VINYL 3/4 | 1 |
| 10 | 6041612 | BOLT 1/4-20 X 1-1/2 PTH ZN | 1 |
| 11 | 1921319 | WASHER 1/4 0.27 ID X 0.620DX.05THK | 2 |
| 12 | 1960294 | NUT 1/4-20 HSFBW BLK ZN | 1 |
| 13 | 1919326 | WASHER-0.312 0.34ID X 0.75ODX 0.06THK | 3 |

! WARNING

TURN OFF THE ENGINE, LET THE ROTOR COME TO A COMPLETE STOP AND DISCONNECT THE SPARK PLUG WIRE BEFORE ASSEMBLING OR DISASSEMBLING THE VACUUM KIT OR CHANGING ATTACHMENTS.

! WARNING

NEVER REMOVE ADAPTER FROM THE BACK OF THE MACHINE WHILE THE MACHINE IS RUNNING OR THE ROTOR IS TURNING. THE ROTOR IS SPINNING JUST INCHES AWAY FROM THE ADAPTER INLET. SERIOUS INJURY WILL RESULT IF YOU PUT YOUR FINGERS OR FOOT IN THE ADAPTER INLET WHILE THE ROTOR IS TURNING

! WARNING

NEVER OPERATE THE MACHINE WITHOUT THE COUPLER/HOSE ASSEMBLY OR PLUG CONNECTED TO THE ADAPTER.

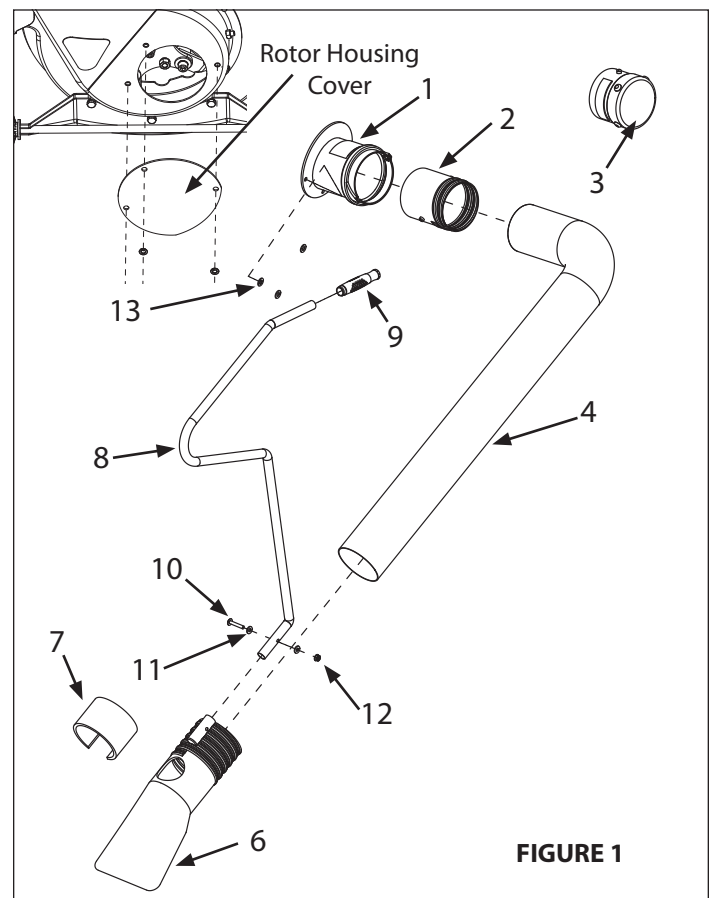


FIGURE 1