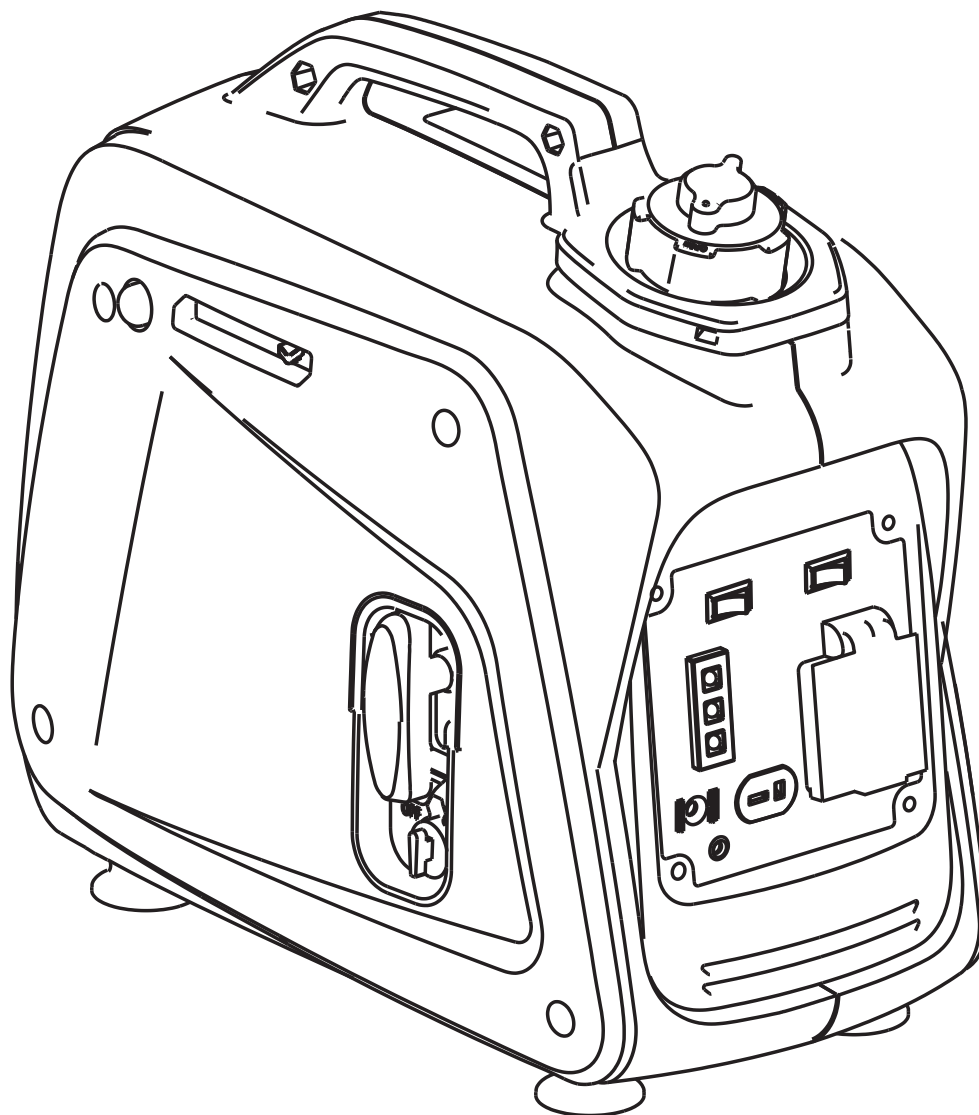




Operator's Manual
**800 Watt
Inverter Generator**

SN



Model #: IG800W

Get parts online at
www.getearthquake.com



P/N: 21377
ECN: 10650
REV1: 11/15/14
© 2014 Ardisam, Inc.
All Rights Reserved

INTRODUCTION

Congratulations on your investment in quality. Thank you for purchasing an IG800W Inverter Generator from Earthquake. We have worked to ensure that the IG800W meets the highest standards for usability and durability. With proper care, your generator will provide many years of service.

Please read this entire manual before use. Earthquake reserves the right to change, alter or improve the product and this document at any time without prior notice.

CONTENTS

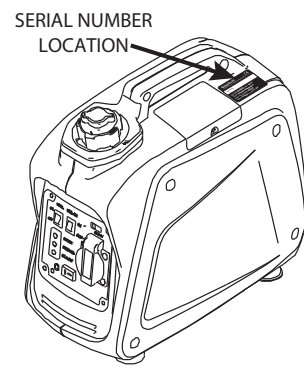
Registration	2
Warnings & Safety Precautions	3-7
Safety Decals	8-9
Features & Controls	10-11
Specifications	12
Pre-Operation Check	12
Operation	13-14
Maintenance	14-17
Transport & Storage	18
Troubleshooting & Repair	18-19
Electrical Wire Diagram	20
Illustrated Parts Breakdown	21-23
Warranty	25-27

Federal Emissions Information

Earthquake warrants to the retail purchaser, that this small, off-road engine was designed, built and equipped to conform at the time of initial sale to all applicable regulations of the U.S. Environmental Protection Agency (EPA).

Registration and Service

Record the model number and serial number in the space provided for easy reference when ordering parts or requesting technical support. Excluding emissions-related warranty items, the warranty is valid only if the completed registration is received by Ardisam within 30 days of purchase. **(SEE WARRANTY SECTION FOR MORE INFORMATION.)** You can register your warranty online by visiting www.GetEarthquake.com, or by mailing it to: Ardisam, 1160 Eighth Avenue, Cumberland, WI 54829. For additional information, call Earthquake customer service at (800) 345-6007 Mondays through Fridays from 8 a.m. to 5 p.m. CST.



OWNERSHIP RECORDS		
Owner's Name:		
Owner's Address:		
City:	State/Province:	Zip Code/Postal Code:
Model Number:	Serial Number:	
Date of Purchase:		
Notes:		

Read and keep this manual for future reference. This manual contains important information on SAFETY, ASSEMBLY, OPERATION, AND MAINTENANCE. The owner must be certain that all the product information is included with the unit. This information includes the MANUAL, the REPLACEMENT PARTS and the WARRANTIES. This information must be included to make sure state laws and other laws are followed. This manual should remain with the product even if it is resold.

WARNINGS & SAFETY PRECAUTIONS

Owner's Responsibility

Accurate assembly and safe and effective use of the machine is the owner's responsibility.

- Read and follow all safety instructions.
- Carefully follow the pre-operation check instructions.
- Maintain the machine according to directions and schedule included in this Earthquake operator's manual.
- Ensure that anyone who uses the machine is familiar with all controls and safety precautions.

Special Messages

Your manual contains special messages to bring attention to potential safety concerns, machine damage as well as helpful operating and servicing information. Please read all the information carefully to avoid injury and machine damage.

NOTE: General information is given throughout the manual that may help the operator in the operation or service of the machine.



THIS SYMBOL POINTS OUT IMPORTANT SAFETY INSTRUCTIONS WHICH IF NOT FOLLOWED COULD ENDANGER YOUR PERSONAL SAFETY OR THE SAFETY OF YOUR EQUIPMENT. READ AND FOLLOW ALL INSTRUCTIONS IN THIS MANUAL BEFORE ATTEMPTING TO OPERATE THIS EQUIPMENT.

Before Operating Engine:

Please read this section carefully. Read entire operating and maintenance instructions for this product. Failure to follow instructions could result in serious injury or death. Operate the machine according to the safety instructions outlined here and inserted throughout the text. Anyone who uses this machine must read the instructions and be familiar with the controls.

Intended Use / Foreseeable Misuse



IMPORTANT: This is a motorized inverter generator that processes DC energy into smooth AC power. It is a pedestrian-use product, with a gasoline-fueled internal combustion engine to generate usable power. It shall not be used for any other purpose.



WARNING

WARNING INDICATES A HAZARD WHICH, IF NOT AVOIDED, COULD RESULT IN DEATH OR SERIOUS INJURY AND/OR PROPERTY DAMAGE.



CAUTION

CAUTION INDICATES YOU CAN BE HURT OR YOUR EQUIPMENT DAMAGED IF THE SAFETY INSTRUCTIONS THAT FOLLOW THIS SIGNAL WORD ARE NOT OBEYED.



IMPORTANT

INDICATES HELPFUL INFORMATION FOR PROPER ASSEMBLY, OPERATION, OR MAINTENANCE OF YOUR EQUIPMENT.



WARNING

CALIFORNIA PROPOSITION 65 WARNING

ENGINE EXHAUST FROM THIS PRODUCT CONTAINS CHEMICALS KNOWN TO THE STATE OF CALIFORNIA TO CAUSE CANCER, BIRTH DEFECTS, OR OTHER REPRODUCTIVE HARM.



WARNING

YOU MUST READ, UNDERSTAND AND COMPLY WITH ALL SAFETY AND OPERATING INSTRUCTIONS IN THIS MANUAL BEFORE ATTEMPTING TO SETUP AND OPERATE YOUR MACHINE.

FAILURE TO COMPLY WITH ALL SAFETY AND OPERATING INSTRUCTIONS CAN RESULT IN LOSS OF MACHINE CONTROL, SERIOUS PERSONAL INJURY TO YOU AND/OR BYSTANDERS, AND RISK OF EQUIPMENT AND PROPERTY DAMAGE. THE TRIANGLE IN THE TEXT SIGNIFIES IMPORTANT CAUTIONS OR WARNINGS WHICH MUST BE FOLLOWED.

GENERAL SAFETY RULES

Read, understand, and follow all instructions on the machine and in the manual(s). Be thoroughly familiar with the controls and the proper use of the machine before starting.

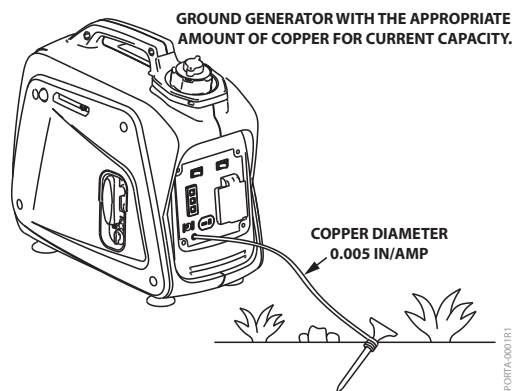
- Use this equipment for its intended purpose only.
- Familiarize yourself with all of the safety and operating decals on this equipment and on any of its attachments or accessories.
- Never operate in an enclosed area, in a vehicle or indoors even if doors and windows are open.
- Only allow responsible individuals who are familiar with the instructions to operate the machine. Do not allow children to operate this machine. Do not allow adults to operate the machine without proper instruction.
- Operate generator only on level surfaces and where it will not be exposed to excessive moisture, dirt, dust or corrosive vapors.
- Keep hands, feet, clothing, etc., away from drive belts, fans and other moving parts. Never remove any fan guard or shield while the unit is operating.
- Do not operate the machine without proper guards or other safety protective devices in place.
- See manufacturer's instructions for proper operation and installation of accessories. Only use accessories approved by the manufacturer.
- Do not operate or work on this product when fatigued or under the influence of alcohol, drugs or other medication which can cause drowsiness or affect your ability to operate this machine safely.
- Do **NOT** operate generator in rain or snow.
- If the equipment should start to vibrate abnormally, stop the engine (motor). Push the **STOP** position on the RUN/STOP switch. Check immediately for cause. Vibration is generally a warning of trouble. If the noise or vibrations of the machine increase, stop immediately and perform an inspection.
- Never leave the machine unattended when the engine is running. Push the **STOP** position on the RUN/STOP switch. Regularly inspect the machine. Make sure parts are not damaged or loose.
- Certain parts of the generator get extremely hot during operation. Avoid severe burns, keep clear of the generator until it has cooled.

- Do not alter the construction of the generator or change controls which might create an unsafe operating condition.
- Keep all screws, nuts and bolts tight.
- Do not transport the machine from one place to another with the engine running.
- Never use the generator or any of its parts as a step. Stepping on the unit can stress and break parts and may result in dangerous operating conditions from leaking exhaust gases, fuel leakage, oil leakage, etc.
- When moving the packaged machine, always do so with a partner.
- Check local regulations for any restrictions on the use of this machine.

Product-Specific Safety Rules

- The generator produces dangerously high voltage when in operation. Avoid contact with bare wires, terminals, connections, etc., while the unit is running, even on equipment connected to the generator. Ensure all appropriate covers, guards and barriers are in place before operating the generator.
- Never handle any kind of electrical cord or device while standing in water, while barefoot or while hands or feet are wet. **DANGEROUS** electrical shock may result.
- The generator must be earth grounded in accordance with all relevant electrical codes and standards before operating. A 10 gauge copper wire should be used to connect the ground terminal of the generator to a grounding rod. A wire too thin may not provide sufficient electrical current carrying capacity to be an adequate ground path.
- Use a ground fault circuit interrupter in any damp or highly conductive area (such as metal decking or steel work).
- Do not use worn, bare, frayed or otherwise damaged electrical cord sets with the generator.
- In case of accident caused by electric shock, immediately shut down the source of electrical power. If this is not possible, attempt to free the victim from the live conductor. **AVOID** direct contact with the victim. Use a non-conducting implement, such as a rope or board, to free the victim from the live conductor. If the victim is unconscious, apply first aid and get immediate medical help.

⚠ WARNING



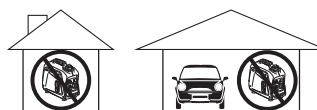
⚠ WARNING

ENGINES GIVE OFF CARBON MONOXIDE, AN ODORLESS, COLORLESS, POISONOUS GAS. CARBON MONOXIDE MAY BE PRESENT EVEN IF YOU DO NOT SMELL OR SEE ANY ENGINE EXHAUST. BREATHING CARBON MONOXIDE CAN CAUSE NAUSEA, FAINTING OR DEATH, IN ADDITION TO DROWSINESS, DIZZINESS AND CONFUSION.

IF YOU EXPERIENCE ANY OF THESE SYMPTOMS, SEEK FRESH AIR AND MEDICAL ATTENTION IMMEDIATELY.

⚠ WARNING

USING A GENERATOR INDOORS CAN KILL YOU IN MINUTES DUE TO CARBON MONOXIDE.



NEVER USE INSIDE A HOME OR GARAGE.



ONLY USE OUTSIDE, FAR AWAY FROM WINDOWS, DOORS AND VENTS.

Preventing Carbon Monoxide Poisoning

- Always start and run engine outdoors. Do not start or run engine in an enclosed area, even if doors or windows are open.
- Never try to ventilate engine exhaust indoors. Carbon monoxide can reach dangerous levels very quickly.
- Never run engine outdoors where exhaust fumes may be pulled into a building.
- Never run engine outdoors in a poorly ventilated area where the exhaust fumes may be trapped and not easily taken away. (Examples include: in a large hole or areas where hills surround your working area.)
- Never run engine in an enclosed or partially enclosed area. (Examples include: buildings that are enclosed on one or more sides, under tents, car ports or basements.)
- Always run the engine with the exhaust and muffler pointed in the direction away from the operator.
- Never point the exhaust muffler towards anyone. People should always be many feet away from the operation of the engine and its attachments.
- Do not change the engine governor settings or over-speed the engine.

ENGINE SAFETY PRECAUTIONS

Warning Carbon Monoxide Poisoning

Engines give off carbon monoxide, an odorless, colorless, poisonous gas. Carbon monoxide may be present even if you do not smell or see any engine exhaust. Breathing carbon monoxide can cause nausea, fainting or death, in addition to drowsiness, dizziness and confusion. If you experience any of these symptoms, seek fresh air and medical attention immediately.

If your product comes with a separate engine manual, be sure to read and follow all safety and warning precautions outlined there, in addition to any in this manual.

Gasoline Fires and Handling Fuel Safely

Use extra care in handling gasoline and other fuels. They are flammable and vapors are explosive.

- When storing extra fuel be sure that it is in an appropriate container and away from any fire hazards.
- Prevent fire and explosion caused by static electric discharge. Use only nonmetal, portable fuel containers approved by the Underwriter's Laboratory (U.L.) or the American Society for Testing & Materials (ASTM).
- Always fill fuel tank outside in a well ventilated area. Never fill your fuel tank with fuel indoors. (Examples include: basement, garage, barn, shed, house, porch, etc.) Never fill tank near appliances with pilot lights, heaters, or other ignition sources. If the fuel has to be drained, this should be done outdoors. The drained fuel should be stored in a container specifically designed for fuel storage or it should be disposed of carefully.
- Never remove the fuel cap or add fuel with the engine running. Stop engine and allow to cool before filling.
- Never drain fuel from engine in an enclosed area.
- Always wipe up excess (spilled) fuel from engine before starting. Clean up spilled fuel immediately. If fuel is spilled, do not start the engine but move product and fuel container from area. Clean up spilled fuel and allow to evaporate and dry after wiping and before starting.
- Allow fuel fumes/vapors to escape from the area before starting engine.
- Test the fuel cap for proper installation before starting and using engine.
- Always run the engine with fuel cap properly installed on the engine.
- Never smoke while refilling or draining engine fuel tank.
- Do not store engine with fuel in fuel tank indoors. Fuel and fuel vapors are highly explosive.
- Never pour fuel from engine fuel tank.
- Never siphon fuel by mouth to drain fuel tank.
- Always have an adult fill the fuel tank and never allow children to fill the engine.
- Never allow an adult or anyone under the influence of drugs or alcohol to fill engine.
- When storing gasoline or equipment with fuel in the tank, store away from furnaces, stoves, water heaters or other appliances that have a pilot light or other ignition source because they can ignite gasoline vapors.



CAUTION

HOT GASES ARE A NORMAL BY-PRODUCT OF A FUNCTIONING INTERNAL COMBUSTION ENGINE. FOLLOW ALL SAFETY INSTRUCTIONS TO PREVENT BURNS AND FIRES.

DO NOT ALTER/MODIFY ENGINE:

NEVER ALTER OR MODIFY THE ENGINE FROM THE FACTORY. SERIOUS INJURY OR DEATH MAY OCCUR IF ENGINE IS MODIFIED OR ALTERED.

WHEN WORKING ON OR REPLACING PARTS FOR THE ENGINE OR PRODUCT, YOU MUST ALWAYS PUSH THE RUN/STOP SWITCH TO THE OFF POSITION.

Burns and Fires

The muffler, muffler guard and other parts of the engine become extremely hot during the operation of the engine. These parts remain extremely hot after the engine has stopped.

Prevention of Burns and Fires

- Never remove the muffler guard from the engine.
- Never touch the muffler guard because it is extremely hot and will cause severe burns.
- Never touch parts of the engine that become hot after operation.
- Always keep materials and debris away from muffler guard and other hot parts of the engine to avoid fires.

Children and bystanders

Tragic accidents can occur if the operator is not alert to the presence of children and/or bystanders. Never assume that others will remain where you last saw them.

- Keep the area of operation clear of all persons, especially small children and pets. Keep children under the watchful care of a responsible adult.
- Never allow children to operate the machine.

Service

- Always stop the engine whenever you leave the equipment, before cleaning, repairing or inspecting the unit. Engine should be turned off and cool. Never make adjustments or repairs with the engine (motor) running. Push the **STOP** position on the RUN/STOP switch to prevent accidental starting.
- Always wear eye protection when you make adjustments or repairs.

- Keep all nuts and bolts tight and keep equipment in good condition.
- Never tamper with safety devices. Check their proper operation regularly.
- When servicing or repairing the machine, do not tip the machine over or up unless specifically instructed to do so in this manual. Service and repair procedures can be done with the machine in an upright position. Some procedures will be easier if the machine is lifted on a raised platform or working surface.
- To reduce fire hazard, keep machine free of grass, leaves or other debris build-up. Clean up oil or fuel spillage. Allow machine to cool before storing.
- Clean and replace safety and instruction decals as necessary.
- To guard against engine over-heating, always have engine filters mounted and clean.
- Inspect machine before storage. When not in use, push the **STOP** position on the RUN/STOP switch. Store indoors in a dry, securely locked location inaccessible to children.
- Use only original equipment parts from Earthquake including all nuts and bolts.
- Avoid connecting the generator to commercial power outlets.
- Avoid connecting the generator in parallel with any other generator.

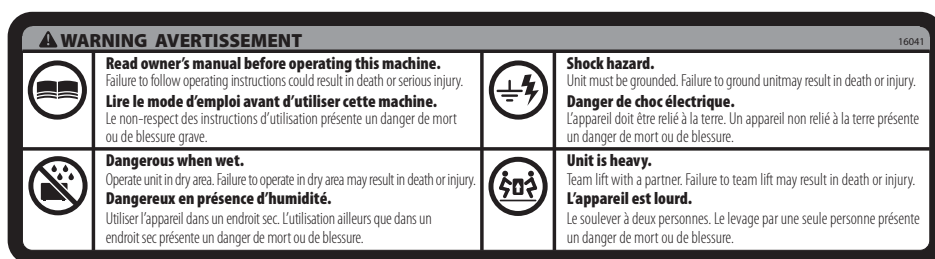
SAFETY DECALS

This IG800W Inverter Generator has been designed and manufactured to provide you with the safety and reliability you would expect from an industry leader in powered chore equipment manufacturing.

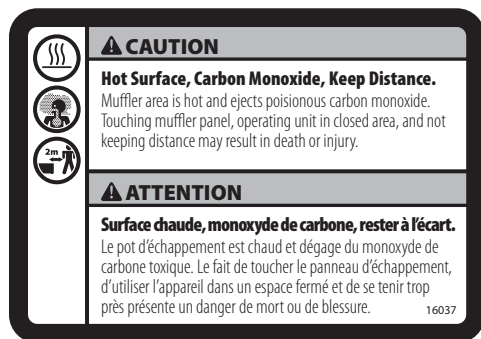
Reading this manual and the safety instructions it contains will provide you with the necessary basic knowledge to operate this equipment safely and effectively. We have placed a safety decal on the generator to remind you of some of this important information while you are operating the unit.

These important safety decals are illustrated below, and are shown here to help familiarize you with the location and content of the safety messages you will see as you perform normal operations. Please review these decals now, and if you have any questions regarding its meaning or how to comply with these instructions, reread the complete safety instruction text in this manual. For additional questions European customers may contact their local dealer and US customers must call Earthquake customer service.

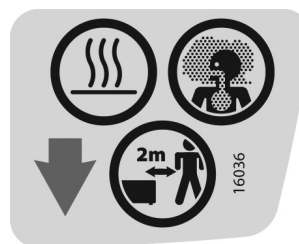
Should a decal become unreadable because of being worn, faded, or otherwise damaged during the use of your IG800W, please use the part number information provided to order a replacement label. European customers can order from their local authorized dealer and US customers can order by calling Earthquake customer service. These decals are easily applied, and will act as a constant visual reminder to you, and others who may use the equipment, to follow the safety instructions necessary for safe, effective operation of your inverter generator.



(Part # 16041)
IG800W MULTI WARNING DECAL
Read Manual, Dangerous when Wet, Shock Hazard Unit is Heavy.



(Part # 16037)
IG800W MULTI
WARNING DECAL 2
Hot Surface, Carbon
Monoxide, Keep
Distance



(Part # 16036)
IG800W EXHAUST
WARNING DECAL
Hot Surface, Carbon
Monoxide, Keep
Distance



Serial No.

16044

Model: **IG800W** Year: **2014**
Type: **Inverter Generator**
Max. AC Output: **800 W**
Mass: **9.5 kg** L_{WA} (dBA): **58**

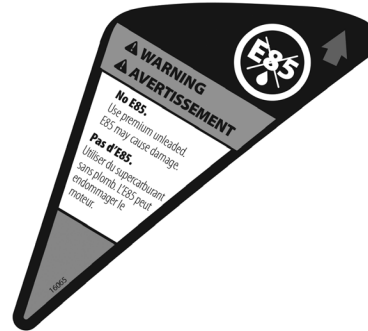
(Part # 16044)
IG800W SERIAL
NUMBER DECAL
Product Name Plate
with Serial Number

(Part # 16045)
IG800W NO OIL
WARNING TAG
Add Specified
Engine Oil

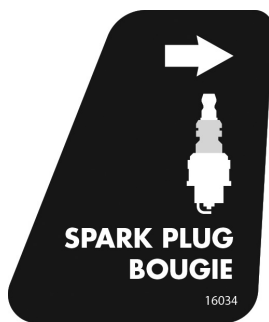




(Part #16042)
IG800W FIRE HAZARD
WARNING DECAL
Engine Fuel is Flammable



(Part # 16065)
IG800W NO E85
WARNING DECAL
Use Premium
Unleaded Gasoline

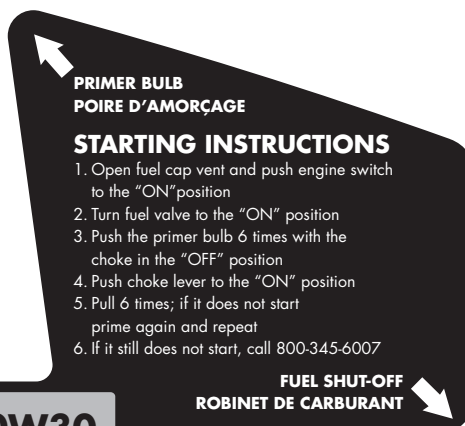


(Part # 16034)
IG800W SPARK PLUG
ACCESS DECAL
Spark Plug Location



(Part # 16035)
IG800W FUEL
ON-OFF DECAL
Fuel Valve ON and Off

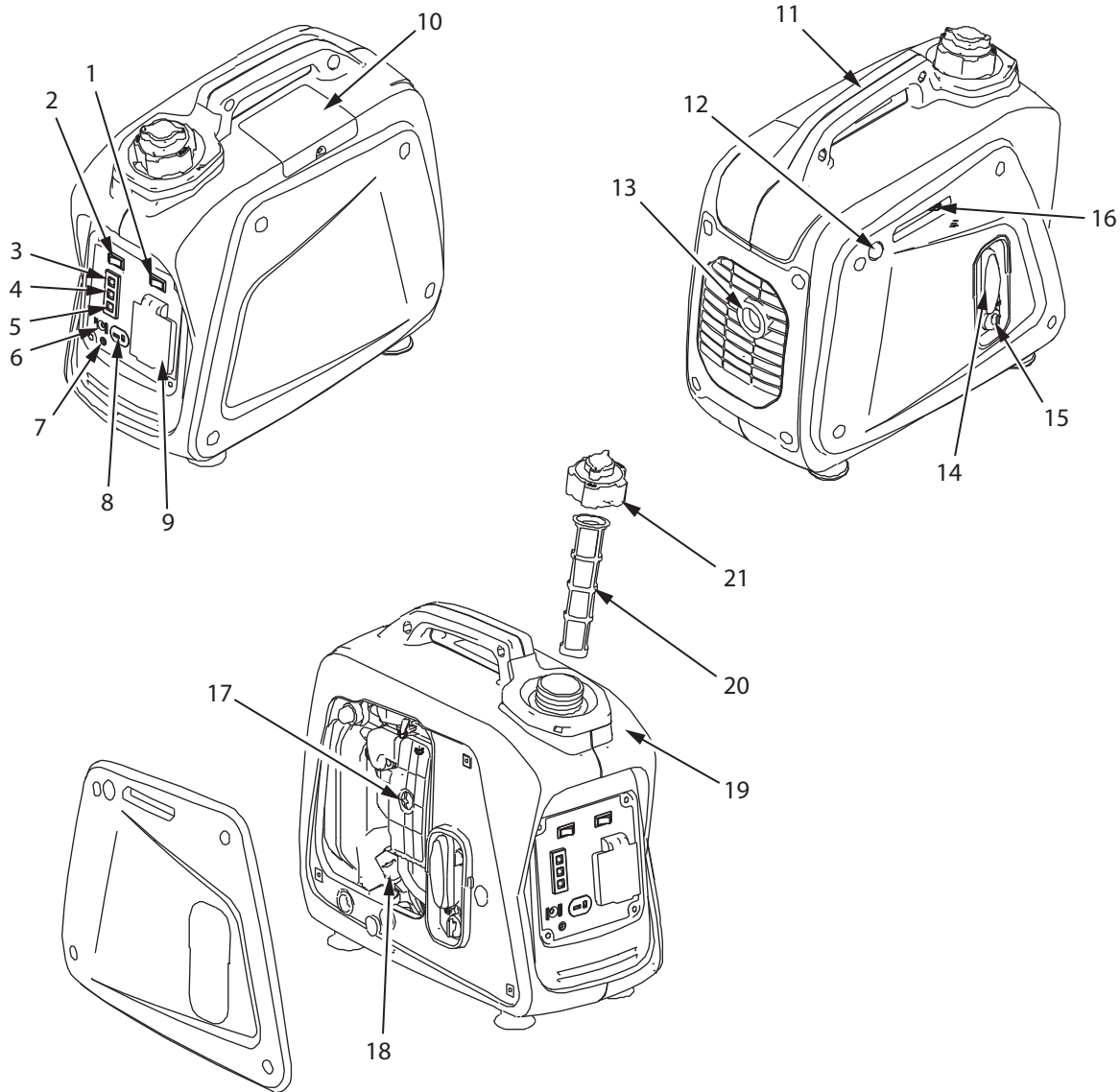
(Part # 16040)
IG800W STARTING
PROCEDURE DECAL
Starting Instructions
and Engine Oil Type



(Part # 16061)
IG800W CHOKE
GENERATOR DECAL
*Run and Choke



Features & Controls



LEGEND:

- | | | |
|-----------------------------|--------------------|----------------------|
| 1. ENGINE SWITCH | 8. DC RECEPTACLE | 15. FUEL VALVE |
| 2. ECONOMY CONTROL SWITCH | 9. AC RECEPTACLE | 16. CHOKE LEVER |
| 3. OUTPUT LIGHT | 10. SPARK PLUG | 17. AIR FILTER COVER |
| 4. OVERLOAD INDICATOR LIGHT | 11. CARRY HANDLE | 18. OIL FILLER CAP |
| 5. OIL WARNING LIGHT | 12. PRIMER BULB | 19. FUEL TANK |
| 6. DC PROTECTOR | 13. MUFFLER | 20. FUEL STRAINER |
| 7. GROUND (EARTH) TERMINAL | 14. RECOIL STARTER | 21. FUEL TANK CAP |

PORTA-003R1

Oil Warning System

When the oil level reaches a low level, the engine will stop automatically. In order to restart the engine, the oil must be refilled.

Engine Switch

The engine switch must be in the **RUN** position to start and run the generator. Push the engine switch to the **STOP** position to stop the generator. **SEE FIGURE 1**

NOTE: It is recommended to keep the engine switch in the **STOP** position while the generator is not in use.

Economy Control Switch

When the economy control switch is in the **ON** position, the economy control unit controls the engine speed according to the connected load. The results are better fuel usage and lower noise levels. **SEE FIGURE 1**

NOTE: When starting the generator, and while plugging in and starting connected devices, make sure the economy control switch is in the **OFF** position. When all units are running smoothly, push the economy switch to the **ON** position.

DC Circuit Protector

The DC circuit protector turns off automatically when the load exceeds the generator's rated output. **SEE FIGURE 1**

NOTE: If generator turns off due to excess load, reduce the load to within specific generator rated output levels.

Fuel Tank Cap Air Vent

The fuel tank cap is provided with an air vent knob to stop air flow. The air vent knob must be turned clockwise to the **OPEN** position to run the generator. This will allow for fuel flow in the engine. When the generator is not in use, turn the air vent knob counterclockwise to the **CLOSED** position. This will block air flow to the fuel tank. **SEE FIGURE 2**

Fuel Valve

The fuel valve must be in the **ON** position to run the generator. When the generator is not in use, turn the fuel valve to the **OFF** position. **SEE FIGURE 2**

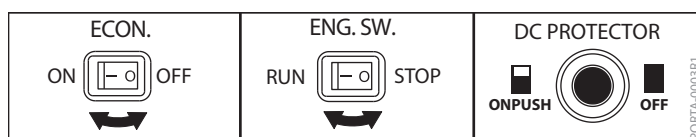


FIGURE 1

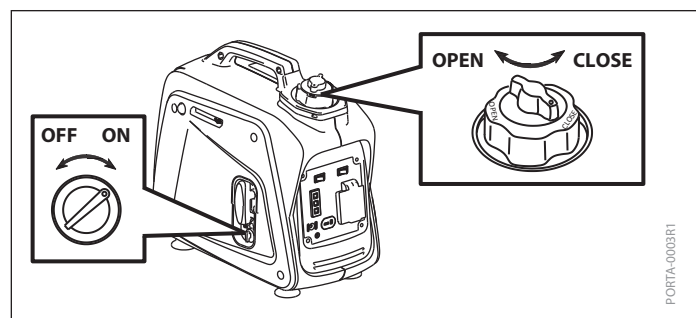


FIGURE 2

SPECIFICATIONS

Ac Voltage	60Hz - 120V
Max Output	800 watts
Rated Output	700 watts
Dc Output	12V / 4.5A
Engine Displacement	40cc
Engine Type	4-cycle
Noise Level (@7M)	58 dB
Fuel Tank Capacity	0.55 gallons (2.1 liters)
Recommended Fuel Type	Minimum 87 octane gasoline with NO ethanol content NOTE: If using an ethanol blended fuel, a fuel stabilizer, mixed to manufacturer specifications, is recommended.
Run Time (25% Load)	8.2 hours
Oil Tank Capacity	11.8 ounces (.35 liter)
Oil Type	10W-30 (SJ, SL or better)
Spark Plug	CMR6A (TORCH)
Spark Plug Gap	0.6 - 0.7 mm
Weight Of Unit	20 lb
Unit Size L X W X H (Inches)	15.6 x 8.2 x 14.0

WARNING

DO NOT REFILL TANK WHILE ENGINE IS RUNNING OR HOT. ALWAYS CLOSE FUEL VALVE BEFORE REFUELING.
BE CAREFUL NOT TO ALLOW DUST, DIRT, WATER OR OTHER FOREIGN OBJECTS INTO FUEL.
DO NOT FILL ABOVE THE TOP OF THE FUEL STRAINER OR IT MAY OVERFLOW WHEN THE FUEL EXPANDS.
KEEP AWAY FROM OPEN FLAMES.

CAUTION

ENGINE IS SHIPPED FROM FACTORY WITHOUT OIL. YOU MUST ADD ENGINE OIL BEFORE STARTING ENGINE. IF ENGINE IS STARTED WITHOUT OIL, ENGINE MAY BE DAMAGED BEYOND REPAIR AND WILL NOT BE COVERED BY WARRANTY.
NEVER STORE ENGINE WITH FUEL IN THE TANK INDOORS. FUEL AND FUEL VAPORS ARE HIGHLY FLAMMABLE.
AN ADULT ONLY MUST ALWAYS HANDLE AND FILL THE ENGINE WITH FUEL.
ALWAYS HANDLE FUEL IN A WELL VENTILATED AREA, OUTDOORS, AWAY FROM FLAMES OR SPARKS.
DO NOT START ENGINE IF FUEL IS SPILLED. WIPE OFF EXCESS FUEL AND ALLOW TO DRY. REMOVE ENGINE FROM AREA TO AVOID SPARKS.

IMPORTANT

DO NOT SPRAY WATER ON OR NEAR THE ELECTRONICS OF THE GENERATOR AS THIS MAY RESULT IN DAMAGE TO THE ELECTRICAL COMPONENTS.

PRE-OPERATION CHECK

NOTE: Pre-Operation checks should be made each time the generator is used.

Check Fuel

- Make sure there is sufficient fuel in the tank. It is recommended to use a minimum 87 octane gasoline. If ethanol gas is used, a fuel stabilizer should be mixed to manufacturers specifications.
- Be sure to use the fuel filter screen on the fuel strainer neck.
- Fuel tank capacity is 0.55 gallons.

Filling Fuel Tank:

1. Make sure the generator is not running and is completely cool before refilling the fuel tank.
2. Move to a well ventilated area, outdoors, away from flames and sparks.

3. Clean debris from area around the fuel cap.
4. Loosen fuel cap slowly. Prevent the cap from coming in contact with dirt or debris.
5. Carefully add fuel without spilling.
6. Do not fill fuel tank completely full, allow space for fuel to expand.
7. Immediately replace fuel cap and tighten. Wipe off spilled fuel and allow to dry before starting engine.

Check Engine Oil

Make sure the engine oil is at the upper level of the oil fill hole. Add oil as necessary.

To add/check the engine oil:

1. Be sure the generator is located on a level surface before checking or refilling the oil.
2. Remove the side panel on the engine recoil side of the generator. Four screws must be removed, one from each corner of the side panel.

NOTE: Included in the box is a Phillips head screwdriver.

3. Clean around oil fill area.
4. Unscrew dipstick and wipe clean with cloth.
5. Reinsert dipstick without tightening. **SEE FIGURE 3**
6. If oil level is below the lower level line, refill with 10W-30 (SJ, SL or better) oil to upper level line (capacity 11.8 ounces).

NOTE: Change oil if contaminated.

Ground Generator

Make sure to properly ground the generator. The generator must be on a firm, level surface with at least five feet of clearance on all sides.

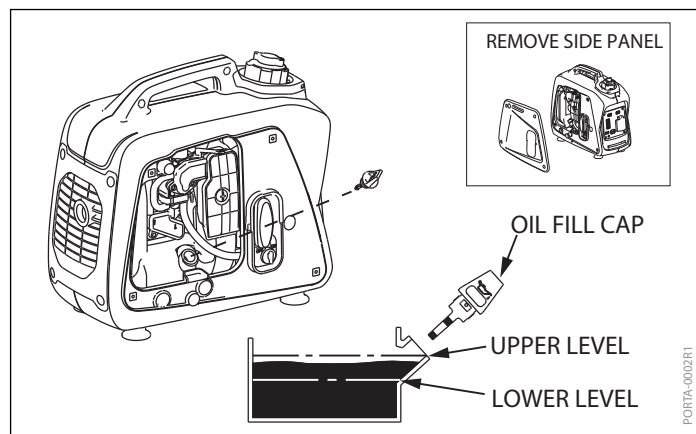


FIGURE 3

⚠ CAUTION

- IF ENGINE FAILS TO START AFTER FOLLOWING STARTING PROCEDURES, PLEASE CONTACT OUR CUSTOMER SERVICE DEPARTMENT AT 800-345-6007.
- STARTER ROPE CAN CAUSE AN UNANTICIPATED JERK TOWARDS ENGINE. PLEASE FOLLOW INSTRUCTIONS TO AVOID INJURY.
- NEVER LEAVE ENGINE RUNNING WHILE UNATTENDED. TURN OFF AFTER EVERY USE.
- NEVER CARRY GENERATOR FROM ONE LOCATION TO ANOTHER WHILE ENGINE IS RUNNING.
- ALWAYS WEAR A PROTECTIVE HEARING DEVICE.
- DO NOT START ENGINE IF FUEL IS SPILLED. WIPE OFF EXCESS FUEL AND ALLOW TO DRY.
- STARTING THE GENERATOR WITH ELECTRICAL DEVICES CONNECTED COULD DAMAGE THE GENERATOR AND THE CONNECTED DEVICES.

OPERATION

Starting Generator

Before starting make sure nothing is connected to the generator and it is in a stable position. The economy control switch should be in the **OFF** position until the generator and the later connected devices are running smoothly.

1. Turn the fuel tank cap air vent to the **OPEN** position. **SEE FIGURE 4**
2. Turn the fuel valve to the **ON** position. **SEE FIGURE 4**
3. Push engine switch to the **RUN** position. **SEE FIGURE 5**
4. Press the primer bulb six times with the choke in the **RUN** position. **SEE FIGURE 6**

NOTE: Priming the engine should only be necessary for cold starts and after refueling.

5. Move choke lever to the **CHOKE** position. **SEE FIGURE 6**

NOTE: The choke is not necessary if the engine is warm.

⚠ WARNING

MAKE SURE THE UNIT IS IN A STABLE POSITION BEFORE PULLING THE STARTER HANDLE.

6. Use one hand to securely hold the carrying handle of the generator. With the other hand pull the starter handle slowly until resistance is felt (this is the "compression" point). Return the handle to its original position and then pull swiftly. Do not fully extend the rope. After starting, slowly return the starter handle to its original position.

NOTE: If the engine does not start prime again and repeat.

7. Allow the engine to warm up.
8. Move choke lever back to **RUN** position. **SEE FIGURE 6**
9. Allow for the engine to run without a load for a few minutes.

NOTE: For cold weather operation, store the unit in a cool environment. Transferring the unit from a cold to a warm place can cause the build up of harmful condensation.

To Stop The Generator

1. Disconnect any electrical devices.
2. Put the engine switch in the **STOP** position.
SEE FIGURE 5
3. Turn the fuel valve to the **OFF** position. **SEE FIGURE 4**
4. Turn the fuel tank cap air vent counterclockwise to the **CLOSED** position. **SEE FIGURE 4**

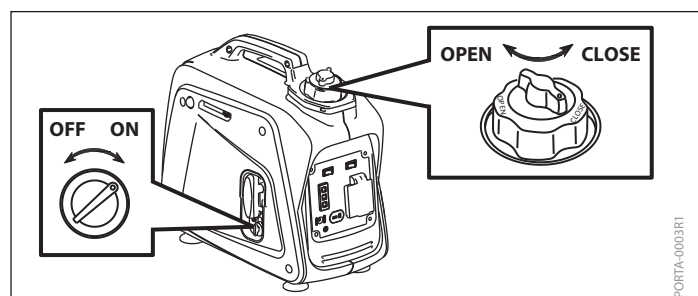


FIGURE 4

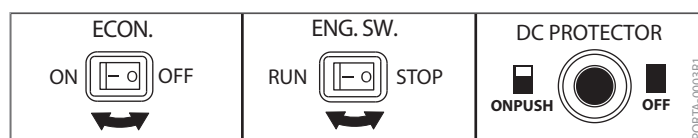


FIGURE 5

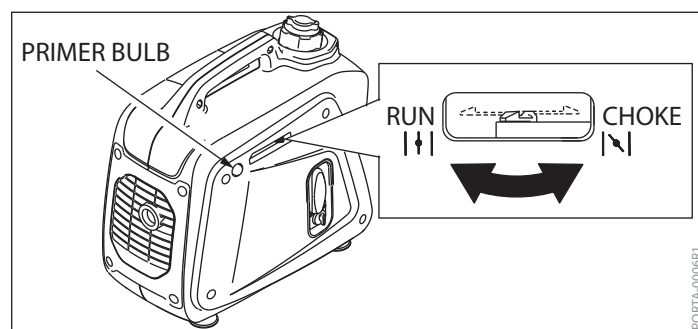


FIGURE 6



WARNING

DONOT USE WORN, BARE, FRAYED OR OTHERWISE DAMAGED ELECTRICAL CORD SETS WITH THE GENERATOR. DO NOT HANDLE ANY KIND OF ELECTRICAL DEVICE WHILE STANDING IN WATER, WHILE BAREFOOT OR WHILE HANDS OR FEET ARE WET.



CAUTION

- **BE SURE THE ELECTRICAL DEVICE(S) IS(ARE) TURNED OFF BEFORE PLUGGING IN.**
- **BE SURE THAT THE TOTAL LOAD IS WITHIN GENERATOR RATED OUTPUT.**
- **BE SURE THE SOCKET LOAD CURRENT IS WITHIN THE SOCKET RATED CURRENT.**
- **THE ECONOMY CONTROL SWITCH MUST BE TURNED TO THE OFF POSITION WHEN USING ELECTRIC DEVICES THAT REQUIRE A LARGE STARTING CURRENT.**
- **THE AC OUTPUT OF THE GENERATOR AUTOMATICALLY RESETS WHEN THE ENGINE IS STOPPED AND THEN RESTARTED.**
- **THE OVERLOAD INDICATOR LIGHT MAY COME ON FOR A FEW SECONDS AT FIRST WHEN USING ELECTRIC DEVICES THAT REQUIRE A LARGE STARTING CURRENT.**
- **BE SURE THE ECONOMY CONTROL SWITCH IS IN THE OFF POSITION WHILE CHARGING BATTERIES WITH THE DC APPLICATION.**

USING ELECTRICAL POWER

AC Application:

1. Turn off the switch(es) of the electrical device(s) before connecting to the generator.
2. Insert the plug(s) of the electrical device(s) into the receptacle.
3. Start electrical device(s). Let run for a few moments and then push the economy control switch to the **ON** position.

Overload Indicator Light:

The overload indicator light comes on when an overload of a connected electrical device is detected, the inverter unit overheats or the AC output voltage rises. The electronic breaker will then activate, stopping power to the generator in order to protect the generator and any connected electric devices. The output light (green) will flicker and the overload indicator light (red) will turn on, then the engine will stop running. If so please follow the following steps:

1. Turn off any connected electric devices.
2. Reduce the total wattage of connected electric devices to be within the generators range.
3. If total wattage is within range, check for blockages in the cooling air inlet and around the control unit. If any blockages are found, remove.

NOTE: The AC output of the generator automatically resets when the engine is stopped and then restarted.

4. Restart engine. Make sure to follow starting instructions.

DC Application (Option):

This usage is applicable to 12V battery charging only. **Make sure that the economy control switch is in the off position while charging the battery.**

1. Connect the battery charging cable to DC receptacle on the generator.

NOTE: A battery charging cable is included in the box.

2. Connect to the battery terminals using the charging leads. Make sure the red lead is going to the positive (+) post of the battery and the black lead is going to the negative (-) post of the battery.
3. Once the connection is confirmed make sure the DC circuit protector is in the **ON** position.

MAINTENANCE

Generator Maintenance

Please read the maintenance schedule and observe these recommendations to extend the life of your generator.

Good maintenance is essential for safe, economical, and trouble-free operation. It will also help reduce air pollution. To help you properly care for your generator, the following pages include a maintenance schedule, routine inspection procedures, and simple maintenance procedures using basic hand tools. Other service tasks that are more difficult, or require special tools, are best handled by professionals and are normally performed by a technician or other qualified mechanic.

Maintenance, replacement or repair of the emissions control devices and systems may be performed by any non-road engine repair establishment or individuals. However, items must be serviced by an authorized dealer to obtain "no charge" emissions control service.

The maintenance schedule applies to normal operating conditions. If you operate your engine under unusual conditions, such as sustained high-load or high-temperature operation, or use in unusually wet or dusty conditions, consult your servicing dealer for recommendations applicable to your individual needs and use.

MAINTENANCE SCHEDULE

Maintenance Item	Remarks	Pre-operation check (daily)	Initial month or 20 hrs	Every 3 months or 50 hrs	Every 6 months or 100 hrs	Every 12 months or 300 hrs
Spark Plug - Type: TORCH CMR6A (NGK 1223) Gap: 0.6 - 0.7 mm	Check condition, adjust gap and clean. Replace if necessary.			X		
Engine Oil	Check oil level.		X			
	Replace.		X		X	
Air Filter	Clean. Replace if necessary.			X		
Fuel Strainer	Clean fuel strainer. Replace if necessary.				X	
Choke	Check choke operation.	X				
Valve Clearance - Intake: 0.15mm (0.006") Exhaust: 0.20mm (0.008")	Check and adjust when engine is cold.					X
Fuel / Oil Lines	Check hoses for crack or damage. Replace if necessary.	X				
Exhaust System	Check for leakage. Retighten if necessary.	X				
	Check muffler screen. Clean/replace if necessary					X
Starting System	Check recoil starter operation.	X				
Screws / Fasteners	Check that all hardware is secure. Correct if necessary.				X	
Generator	Check the output light comes on.	X				

⚠ CAUTION

ENGINE MUST BE TURNED OFF AND COOL BEFORE CHECKING AND ADJUSTING ENGINE OR EQUIPMENT.

TEMPERATURE OF MUFFLER AND NEARBY AREAS MAY EXCEED 150° F (65° C). AVOID THESE AREAS.

NEVER STORE ENGINE WITH FUEL IN THE TANK INSIDE A BUILDING. POTENTIAL SPARKS MAY BE PRESENT FOR IGNITION OF FUEL AND FUEL VAPORS.

AN ADULT ONLY MUST DO MAINTENANCE AND REPAIR ON GENERATOR.

ENGINE MUST BE TURNED OFF AND COOL BEFORE ANY REPAIR OR MAINTENANCE CAN BE DONE.

DO NOT OVER FILL THE ENGINE CRANKCASE WITH OIL. HIGH OIL PRESSURE MAY RESULT, CAUSING PREMATURE ENGINE WEAR AND DAMAGE.

⚠ CAUTION

BE SURE NO FOREIGN MATERIAL ENTERS THE CRANKCASE WHEN ADDING OR CHANGING OIL.

DO NOT TILT GENERATOR WHEN ADDING OIL. THIS COULD RESULT IN OVERFILLING AND DAMAGE.

THE ENGINE SHOULD NEVER RUN WITHOUT THE AIR FILTER; EXCESSIVE PISTON AND/OR CYLINDER WEAR MAY RESULT.

⚠ CAUTION

TO AVOID INJURY OR DEATH, NEVER SIPHON FUEL BY MOUTH.

NEVER STORE GENERATOR WITH FUEL IN THE FUEL TANK INSIDE AN ENCLOSED AREA OR BUILDING.

⚠ IMPORTANT

NEVER TWIST AIR FILTERS WHEN CLEANING. ALWAYS PRESS.

Steps For Working On Equipment

1. Push the engine switch to the **STOP** position.
2. Replace or repair the part on the IG800W.
3. Check all parts that were repaired, or removed during repair, that they are secure and fit correctly.

NOTE: Only use approved Earthquake spare parts. Never replace parts that are not specifically designed for the generator.

Oil Maintenance

After the first twenty hours of operating a new Viper engine the oil should be replaced, and every 100 hours of operating time thereafter. The oil should be changed every 50 hours if used under severe conditions, such as in high temperatures or under heavy loads. Check oil periodically; do not overfill!

Engine oil Replacement

1. Place the machine on a level surface and warm up the engine for several minutes. Then stop the engine and turn the fuel valve to the **OFF** position and the fuel tank cap air vent to the **CLOSED** position.
2. Remove the side panel on the starter handle side of the generator by loosening the four screws holding it in place.
3. Remove the oil fill cap.
4. Place an oil pan under the engine. Tilt the generator to drain the oil completely. Once oil has been removed return the generator to the level surface.
5. Add engine oil, 10W-30 (API Service SJ, SL or better). Fill to the upper level. For extreme high and low temperature conditions refer to SAE chart. **SEE FIGURE 7**
6. Install the oil fill cap back in place.
7. Reconnect the side panel to the generator and tighten the four screws.

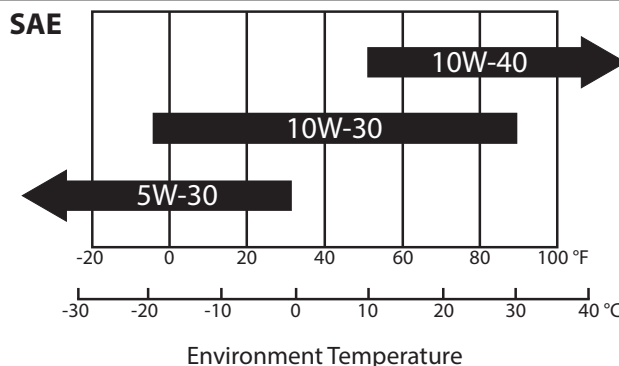


FIGURE 7

Air Filter

Maintaining an air filter cleaner in proper condition is very important. Dirt induced through improperly installed, improperly serviced, or inadequate filters damages and wears out engines. Keep the filter clean.

Cleaning / Replacing Air Filter:

1. Remove the side panel on the starter handle side of the generator by loosening the four screws holding it in place. **SEE FIGURE 8**
2. Remove the air filter cover by loosening the one screw holding it in place and then remove the air filter.
3. Replace with a new oiled filter, or wash the current filter with warm water and mild soap. Remember to thoroughly oil the foam filter with 30 or 40 weight motor oil and squeeze out any excess oil before reinstalling it.

NOTE: Make sure to press the filter evenly into place to ensure that the foam is fully seated into its sealed position.

4. Reconnect the air filter cover and secure it with the screw.
5. Reconnect the side panel, securing with the four screws.

Fuel Tank Strainer

Cleaning / Replacing:

1. Remove the fuel tank cap and strainer. **SEE FIGURE 9**
2. Clean the strainer with solvent. If damaged, replace.
3. Wipe the strainer and reinsert it.

NOTE: Make sure the tank cap is tightened securely.

Spark Arrester

Cleaning / Replacing:

1. Remove the muffler shroud. **SEE FIGURE 10**
2. Remove muffler clamp using a flathead screwdriver to remove the spark arrester.
4. Remove the carbon deposits on the spark arrester using a wire brush. If damaged, replace.
5. Reinstall the spark arrester.
6. Reinstall the muffler shroud.

Spark Plug

The recommended spark plug is a Torch CMR6A (NGK 1223). For maintenance and care of the spark plug go online to www.getearthquake.com for instructions or call Earthquake customer service.

Carburetor

Never tamper with factory setting of the carburetor.



WARNING

ALWAYS BE SURE THE TANK CAP IS TIGHTENED SECURELY TO PREVENT FUEL SPILLS.

THE ENGINE AND MUFFLER WILL BE VERY HOT AFTER THE ENGINE HAS BEEN RUNNING. ALLOW ENGINE TO COOL BEFORE CLEANING/REPLACING PARTS.

AVOID TOUCHING THE ENGINE OR MUFFLER WHILE THEY ARE STILL HOT WITH ANY PART OF YOUR BODY OR CLOTHING DURING INSPECTION OR REPAIR.

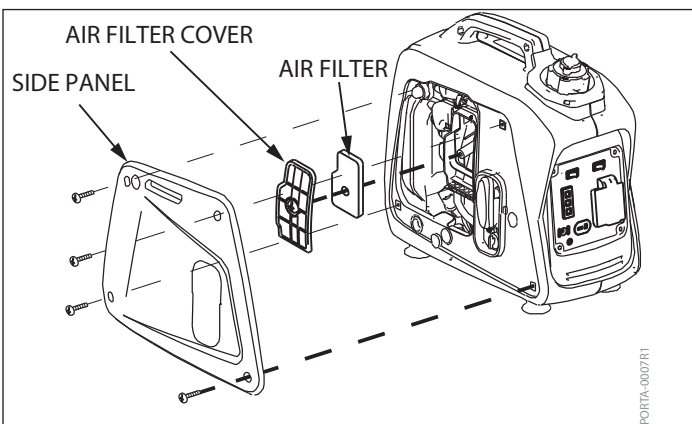


FIGURE 8

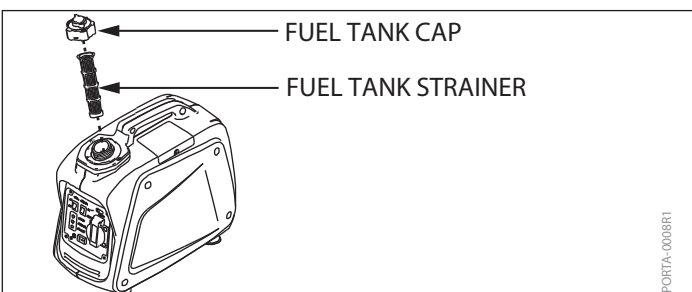


FIGURE 9

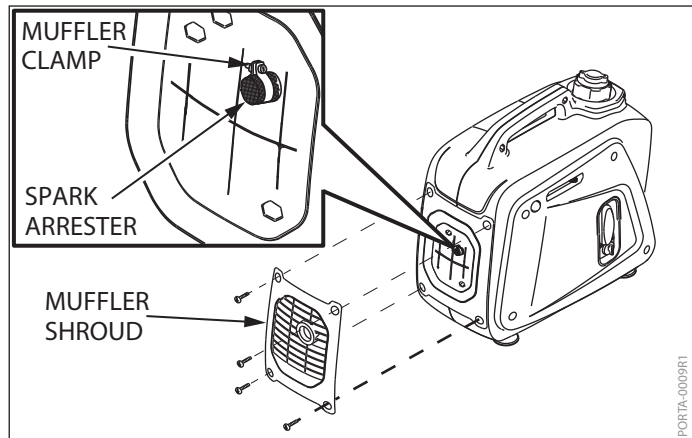


FIGURE 10

TRANSPORT & STORAGE



WARNING

DO NOT TRANSPORT GENERATOR INSIDE AN ENCLOSED SPACE OR WITHIN A VEHICLE. FUEL OR FUEL VAPORS MAY IGNITE CAUSING SERIOUS INJURY OR DEATH.

Transporting Your Generator

1. After using the generator, and before transporting it, make sure:
 - the fuel cap is screwed on tightly (clockwise),
 - the fuel cap vent is closed,
 - the fuel valve is off.
2. If fuel is present in the fuel tank, transport in an open vehicle in an upright position.
3. If an enclosed vehicle must be used, allow generator to cool completely and then remove fuel into an approved red fuel container. **DO NOT siphon by mouth.**
4. Wipe away any spilled fuel and allow to dry.
5. Run engine to use up the fuel in the carburetor and fuel tank. Always run engine in a well ventilated area.
6. Fuel cap should be screwed down tightly, fuel cap vent closed and fuel valve off before transporting your generator in a vehicle.

Long-Term Storage

It is important to prevent gum deposits from forming in essential fuel system parts such as the carburetor, fuel hose or tank during long-term storage. It is recommended to use a minimum 87 octane gasoline. If ethanol gas is used, a fuel stabilizer should be mixed to manufacturers specifications. If your generator will not be used for more than one month, prepare it for long-term storage.

Steps for Long-Term Storage

1. Allow generator to cool completely and then remove all of the fuel from the fuel tank into an approved fuel container. Discard appropriately.
2. Start and run engine to use up the fuel in the carburetor and fuel tank. Be sure to close the fuel valve once complete.
3. After the engine cools down, drain oil from crankcase. Refill with recommended grade.
4. Remove spark plug. Pour about 1/2 ounce (15 ml) of engine oil into the cylinder (the spark plug location). Cover spark plug hole with rag. Pull the starting rope several times to coat the cylinder wall with engine oil.

5. Install and tighten the spark plug.
6. Clean the generator outer surfaces. Check that cooling air slots and openings on generator are open and unobstructed.
7. Store the unit in a clean, dry place.

NOTE: Do not store gasoline from one season to another. If possible, store the unit indoors and cover it to give protection from dust and dirt.

TROUBLESHOOTING & REPAIR

At Earthquake, we build quality and durability into the design of our products; but no amount of careful design by us, and careful maintenance by you, can guarantee a repair-free life for your Earthquake Inverter Generator. Most repairs will be minor, and easily fixed by following the suggestions in the troubleshooting guide in this section.

The guide will help you pinpoint the causes of common problems and identify remedies.

For more complicated repairs, you may want to rely on your retailer, an authorized service center or Earthquake customer service. Earthquake will make the necessary repairs if a service center is not available. A parts breakdown is located toward the end of this manual.

We will always be glad to answer any questions you have, or help you find suitable assistance. To order parts or inquire about warranty, call or e-mail us using the contact information found in this section.

Ordering Replacement Parts

To order replacement parts visit www.GetEarthquake.com or call Earthquake customer service at 1-800-345-6007.

For other general questions, you can e-mail us at info@ardisam.com.

Please include the following information with your order:

- 1) Part numbers
- 2) Part description
- 3) Quantity
- 4) Model number and serial number

Spare Parts

Only use approved Earthquake spare parts.

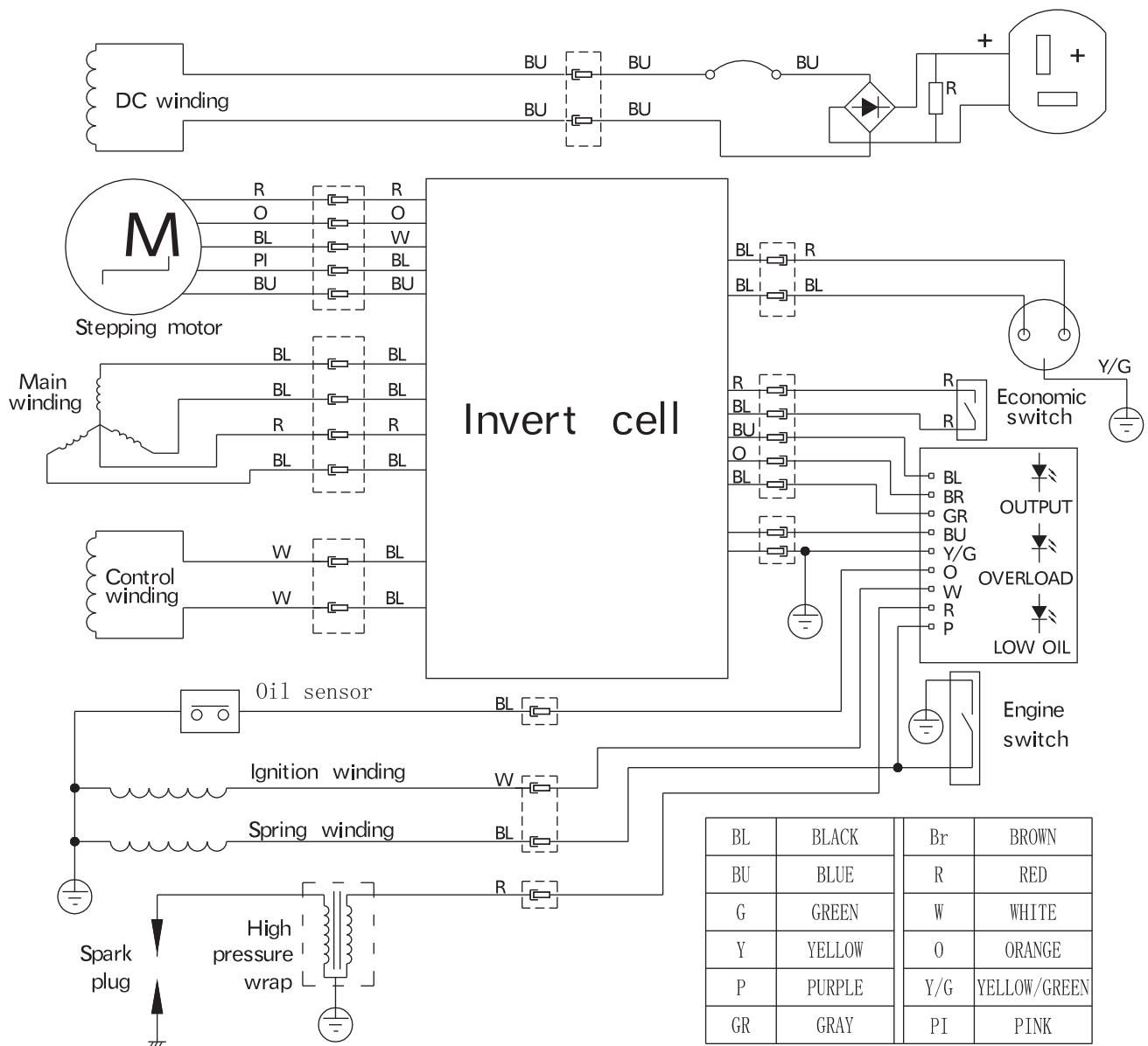
TROUBLESHOOTING GUIDE

PROBLEM	POSSIBLE CAUSE	REMEDY/ACTION
Engine will not start	1. Engine switch in STOP position	1. Push engine switch to RUN position
	2. Out of fuel	2. Refuel
	3. Fuel valve in OFF position	3. Turn fuel valve to ON position
	4. Spark plug wire disconnected	4. Connect spark plug wire to spark plug
	5. Spark plug wet, faulty or improperly gapped	5. Clean, replace or gap spark plug
	6. Economy switch in ON position	6. Push economy switch to the OFF position; Once generator is running push to the ON position
	7. Fuel tank cap air vent in CLOSED position	7. Turn to OPEN position
Engine starts, then runs rough	1. Dirty air filter	1. Clean or replace air filter
	2. Choke partially engaged	2. Turn off choke
	3. Defective or dirty spark plug	3. Clean or replace spark plug
	4. Economy switch is defective	4. Replace economy switch
	5. Carburetor out of adjustment	5. Call Earthquake Customer Service
Engine is hard to start	1. Stale fuel	1. Drain old fuel and replace with fresh. Use fuel stabilizer at end of season
	2. Spark plug wire loose	2. Make sure spark wire is securely attached to spark plug
	3. Dirty carburetor	3. Clean carburetor, use fuel stabilizer, new fuel can
Engine misses or lacks power	1. Clogged fuel tank	1. Remove and clean fuel tank
	2. Clogged air filter	2. Clean or replace air filter
	3. Carburetor out of adjustment or bad	3. Call Earthquake Customer Service
	4. Spark plug wet, faulty or improperly gapped	4. Clean, replace or gap spark plug
Engine runs, then quits	1. Fuel tank cap air vent in CLOSED position	1. Turn to OPEN position
	2. Low fuel level	2. Add fuel to tank
	3. Incorrect engine oil level	3. Check engine oil level, add or drain as needed
	4. Contaminated fuel	4. Remove and replace contaminated fuel; Clean or replace fuel strainer
	5. Defective low oil level switch	5. Replace low oil level switch
	6. Defective ignition coil	6. Replace ignition coil
Engine revs too high	1. Carburetor out of adjustment	1. Call Earthquake Customer Service

Engine speed increases and decreases, this is normal as the generator starts up and as loads vary.

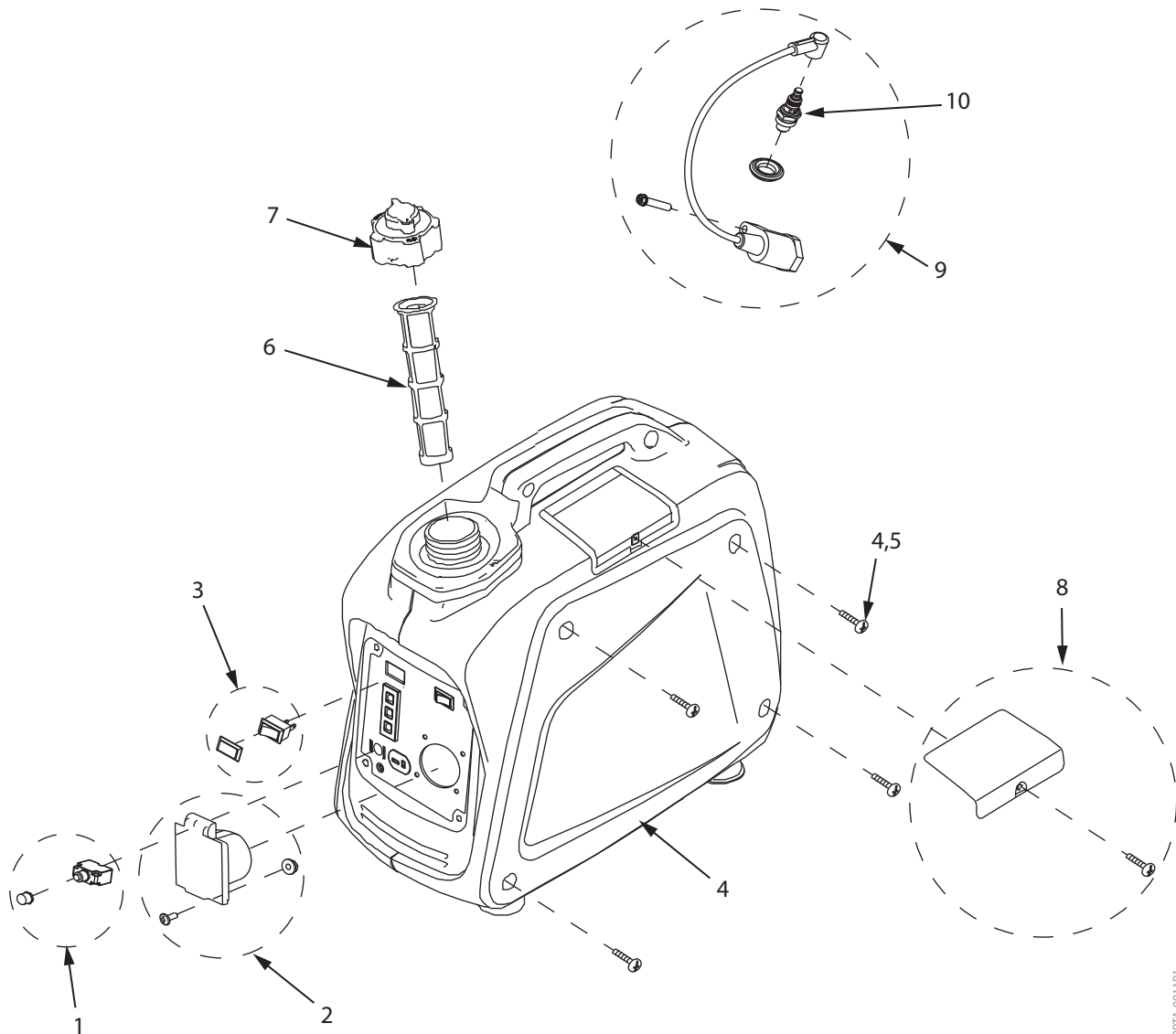
Contact Earthquake customer service at 800-345-6007 if additional assistance is needed.

ELECTRICAL WIRE DIAGRAM



PORTA-0010R1

ILLUSTRATED PARTS BREAKDOWN



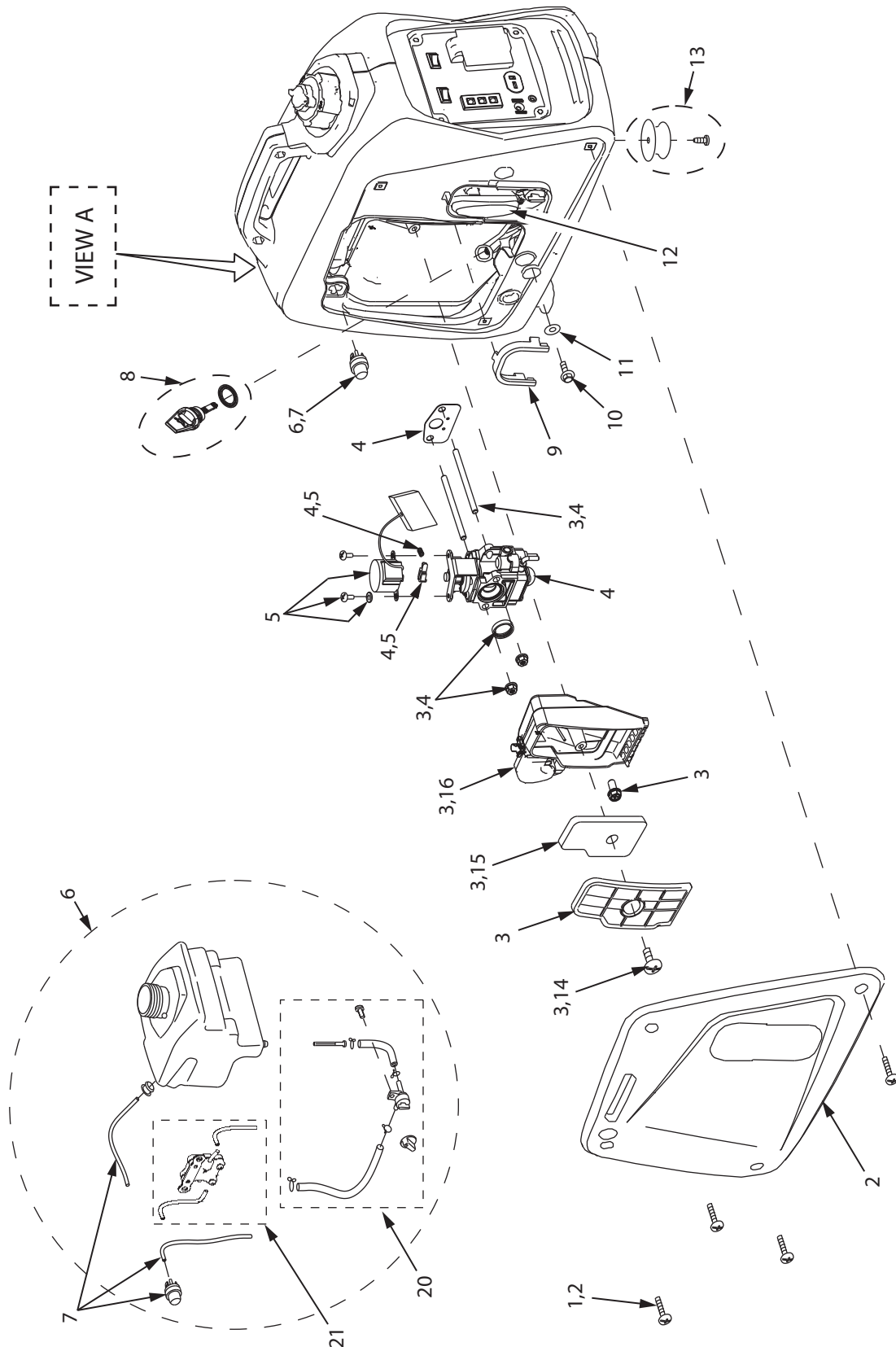
PORTA-0011R1

KEY	PART #	DESCRIPTION	QTY.
1	16116	KIT, CIRCUIT BREAKER 4.5 AMP	1
2	16118	KIT, US OUTLET/SOCKET 110VAC	1
3	16117	KIT, I-O SWITCH WITH COVER	2
4	16113	KIT, PANEL S PLUG PANEL SIDE W/ SCREWS	1
5	16072	SCREW M4.8 X 13 PPHB GR8.8 BLK OX T/F	4

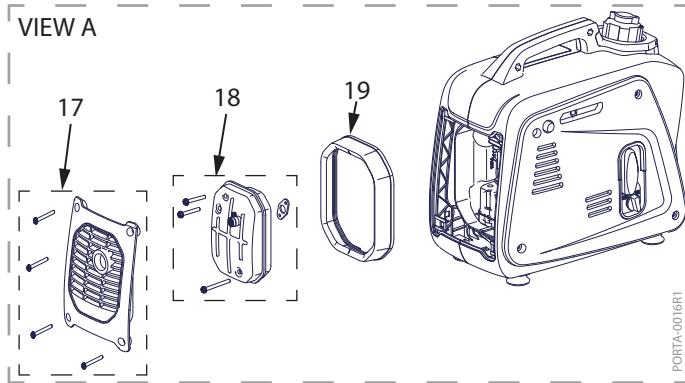
KEY	PART #	DESCRIPTION	QTY.
6	15993	FUEL FILL STRAINER	1
7	15992	CAP, FUEL MANUAL VENT	1
8	16110	KIT, SPARK PLUG ACCESS PANEL	1
9	16107	KIT, 40CC 4-CYCLE COIL W/ SPARK PLUG	1
10	13243	SPARK PLUG TORCH CMR6A (NGK 1223)	1

ILLUSTRATED PARTS BREAKDOWN

PORTA-0012R1



ILLUSTRATED PARTS BREAKDOWN



KEY	PART #	DESCRIPTION	QTY.
1	16072	SCREW (M4.8 X 13 PPHB GR8.8 BLK OX T/F)	4
2	16111	KIT, RECOIL PANEL SIDE W/ SCREWS	1
3	16086	KIT, AIR FILTER ASSEMBLY WITH CHOKE	1
4	16087	KIT, CARBURETOR REPLACEMENT	1
5	16115	KIT, THROTTLE CONTROL	1
6	16108	KIT, FUEL SYSTEM	1
7	16109	KIT, REMOTE PRIMER BULB W/ 2.5MM LINES	1
8	13393	KIT, OIL CAP WITH O-RING	1
9	16024	RECOIL ROPE GUARD	1
10	6272	BOLT (M6 X 1.0 X 12 HHFCS GR8.8 ZN)	1
11	16146	WASHER M6 X 13 X 2 FLAT ALUM	1
12	16101	KIT, RECOIL ASSEMBLY	1
13	16114	KIT, RUBBER FEET W/ SCREWS X4	1
14	16070	SCREW M5-0.8 X 12 PTHMS ZN 2MM SHLDR	1
15	15963	AIR FILTER, (XY139F-6)	1
16	15964	KIT, AIR BOX ASSEMBLY WITH CHOKE	1
17	20351	KIT, MUFFLER SHROUD IG800W	1
18	16166	MUFFLER 40CC 4-CYCLE	1
19	16176	GASKET, MUFFLER IG800W	1
20	20368	KIT, FUEL PETCOCK IG800W	1
21	20998	KIT, FUEL PRESSURE PUMP	1

[illegible]



IG800W Inverter Generator

Warranty Terms and Conditions

PRODUCT WARRANTY: 1-YEAR LIMITED WARRANTY

Ardisam, Inc., a manufacturing company, warrants this IG800W Earthquake Inverter Generator to be free from defects in the material or workmanship for a period of one year from the date of purchase. During the one-year warranty of this product, Ardisam will furnish, at their discretion, parts and labor to correct any defect caused by faulty material or workmanship. Any unit used in a commercial application is covered for a period of 90 days after purchase. This warranty applies to the original owner with a proof of purchase and is not transferable. For the warranty to be valid, the product must be registered online, or the warranty card must be filled out and received by Ardisam, Inc., within 30 days of purchase.

ENGINE WARRANTY: 2-YEAR LIMITED EMISSIONS CONTROL WARRANTY

(SEE FEDERAL EMISSION CONTROL WARRANTY STATEMENT FOR DETAILS)

Ardisam, Inc., a manufacturing company warrants its Viper® Engines under a two-year limited emissions control warranty to be free from defects in materials and workmanship for the service life of the product not to exceed twenty-four consecutive months from the date of purchase for consumer applications.

*These warranties apply only to products which have not been subjected to negligent use, abuse, misuse (including the use of this pump in place of your well or water utility), overload, improper installation, alteration, accident, acts of God (or other events beyond Ardisam's control), unauthorized parts, failure to use proper fuel and oil, or if repairs have been performed at a non-authorized service facility. These warranties shall not cover damage from normal wear and tear, normal maintenance parts and services, lightning; nor improper installation, operation, storage, or maintenance; nor operating the equipment above recommended maximums as stated in this manual and the accompanying engine manual. These warranties supersede all other warranties either expressed or implied and all other obligations or liabilities on the part of Ardisam. Ardisam, does not assume, and does not authorize any other person to assume for Ardisam, any liability in connection with the sale of Ardisam products. To be at "No Charge," warranty work must be sent directly to and performed by Ardisam or an Ardisam Authorized Warranty Service Facility. To obtain warranty service and/or replacement instructions, contact the Ardisam Customer Service Department at 800-345-6007. Ardisam will cover the cost of shipping only for purchasers located more than 100 miles from an Ardisam Authorized Warranty Service Facility if it is determined that warranted repair is indeed necessary. If you choose to ship your product to Ardisam for warranty repair, you must first have prior approval from Ardisam by calling the Ardisam Customer Service Department for a return material authorization number (RMA#). Under these circumstances, all items must be shipped prepaid. Ardisam will at no charge, repair or replace, at the discretion of Ardisam, any defective part which falls under the conditions stated above. Ardisam retains the right to change models, specifications and price without notice. Ardisam shall not be obligated to ship any repair or replacement product to any location outside of the United States of America or Canada. Some states and countries do not allow the limitations on how long an implied warranty lasts, or the exclusion or limitation of incidental or consequential damages, so the above limitation may not apply to you. This warranty gives you specific legal rights, and you may also have other rights which vary from state to state and country to country.

Earthquake™

A Division of Ardisam, Inc.
1160 Eighth Avenue; P.O. Box 666
Cumberland, Wisconsin 54829
800-345-6007 • Fax (715) 822-4180
E-mail: info@GetEarthquake.com

COMBINED EXHAUST AND EVAPORATIVE EMISSIONS CONTROL WARRANTY STATEMENT

Your Warranty Rights And Obligations

The California Air Resources Board, the United States Environmental Protection Agency and Ardisam, Inc. (Ardisam), are pleased to explain the emission control system warranty on your 2014-2015 model year small off-road engine/equipment. In the United States and California, new small off-road engine/equipment must be designed, built and equipped to meet the State's stringent anti smog standards. Ardisam must warrant the emission control system on your small off-road engine/equipment for the periods of time listed below provided there has been no abuse, neglect or improper maintenance of your small off-road engine/equipment.

Your emission control system may include parts such as the carburetor or fuel injection system, the ignition system, catalytic converter, fuel tanks, fuel lines, fuel caps, valves, canisters, filters, vapor, hoses, clamps, connectors, and other associated components. For engines less than or equal to 80 cc, only the fuel tank is subject to the evaporative emission control warranty requirements of this section. (California only)

Where a warrantable condition exists, Ardisam will repair your small off-road engine/equipment at no cost to you including diagnosis, parts and labor.

Manufacturer's Warranty Coverage:

This emissions control system is warranted for two years. If any emission-related part on your equipment is defective, the part will be repaired or replaced by Ardisam.

Owner's Warranty Responsibilities:

As the small off-road engine/equipment owner, you are responsible for the performance of the required maintenance listed in your owner's manual. Ardisam recommends that you retain all receipts covering maintenance on your small off-road engine/equipment, but Ardisam cannot deny warranty for the lack of receipts or for your failure to ensure the performance of all scheduled maintenance.

As the small off-road engine/equipment owner, you should however be aware that Ardisam may deny you warranty coverage if your small off-road engine/equipment or a part has failed due to abuse, neglect, improper maintenance or unapproved modifications.

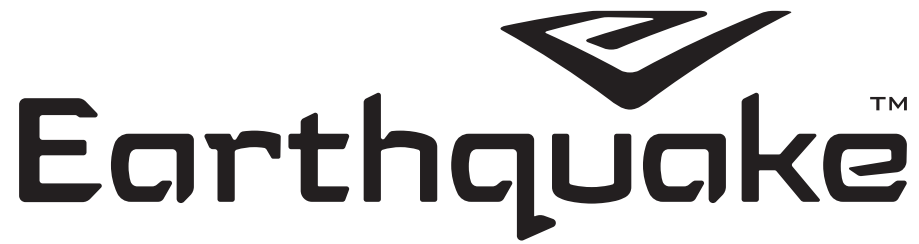
You are responsible for presenting your small off-road engine/equipment to a Ardisam distribution center as soon as a problem exists. The warranty repairs should be completed in a reasonable amount of time, not to exceed 30 days.

If you have any questions regarding your warranty rights and responsibilities, you should contact Ardisam at 1-800-345-6007 or E-mail: info@ardisam.com.

Defects Warranty Requirements:

- (A) The warranty period begins on the date the engine/equipment is delivered to an ultimate purchaser.
- (B) General Emissions Warranty Coverage. Ardisam warrants to the ultimate purchaser and each subsequent owner that the engine/equipment is:
 - (1) Designed, built, and equipped so as to conform with all applicable regulations adopted by the Air Resources Board; and
 - (2) Free from defects in materials and workmanship that causes the failure of a warranted part for a period of two years.
- (C) The warranty on emissions-related parts will be interpreted as follows:
 - (1) Any warranted part that is not scheduled for replacement as required maintenance in the written instructions required by subsection (D) must be warranted for the warranty period defined in subsection (B)(2). If any such part fails during the period of warranty coverage, it must be repaired or replaced by Ardisam according to subsection (4) below. Any such part repaired or replaced under the warranty must be warranted for the remaining warranty period.
 - (2) Any warranted part that is scheduled only for regular inspection in the written instructions required by subsection (D) must be warranted for the warranty period defined in subsection (B)(2). A statement in such written instructions to the effect of "repair or replace as necessary" will not reduce the period of warranty coverage. Any such part repaired or replaced under warranty must be warranted for the remaining warranty period.
 - (3) Any warranted part that is scheduled for replacement as required maintenance in the written instructions required by subsection (D) must be warranted for the period of time prior to the first scheduled replacement point for that part. If the part fails prior to the first scheduled replacement, the part must be repaired or replaced by Ardisam according to subsection (4) below. Any such part repaired or replaced under warranty must be warranted for the remainder of the period prior to the first scheduled replacement point for the part.

- (4) Repair or replacement of any warranted part under the warranty must be performed at no charge to the owner at a warranty station.
 - (5) Notwithstanding the provisions of subsection (4) above, warranty services or repairs must be provided at all Ardisam distribution centers that are franchised to service the subject engine/equipment.
 - (6) The owner must not be charged for diagnostic labor that leads to the determination that a warranted part is in fact defective, provided that such diagnostic work is performed at a warranty station.
 - (7) Ardisam is liable for damages to other engine/equipment components proximately caused by a failure under warranty of any warranted part.
 - (8) Throughout the emissions warranty period defined in subsection (B)(2), Ardisam must maintain a supply of warranted parts sufficient to meet the expected demand for such parts.
 - (9) Any replacement part may be used in the performance of any warranty maintenance or repairs and must be provided without charge to the owner. Such use will not reduce the warranty obligations of Ardisam.
 - (10) Add-on or modified parts that are not exempted by the Air Resources Board may not be used. The use of any non-exempted add-on or modified parts will be grounds for disallowing a warranty claim. Ardisam will not be liable to warrant failures of warranted parts caused by the use of a non-exempted add-on or modified part.
 - (11) Ardisam issuing the warranty shall provide any documents that describe that manufacturer's warranty procedures or policies within five working days of request by the Air Resources Board.
- (D) Emission Warranty Parts List.
- (1) Fuel Metering System
 - (i) Carburetor and internal parts (and/or pressure regulator or fuel injection system).
 - (ii) Air/fuel ratio feedback and control system.
 - (iii) Cold start enrichment system.
 - (iv) Fuel Tank.
 - (2) Air Induction System
 - (i) Controlled hot air intake system.
 - (ii) Intake manifold.
 - (iii) Air filter.
 - (3) Ignition System
 - (i) Spark Plugs.
 - (ii) Magneto or electronic ignition system.
 - (iii) Spark advance/retard system.
 - (4) Exhaust Gas Recirculation (EGR) System
 - (i) EGR valve body, and carburetor spacer if applicable.
 - (ii) EGR rate feedback and control system.
 - (5) Air Injection System
 - (i) Air pump or pulse valve.
 - (ii) Valves affecting distribution of flow.
 - (iii) Distribution manifold.
 - (6) Catalyst or Thermal Reactor System
 - (i) Catalytic converter.
 - (ii) Thermal reactor.
 - (iii) Exhaust manifold.
 - (7) Particulate Controls
 - (i) Traps, filters, precipitators, and any other device used to capture particulate emissions.
 - (8) Miscellaneous Items Used in Above Systems
 - (i) Electronic controls.
 - (ii) Vacuum, temperature, and time sensitive valves and switches.
 - (iii) Hoses, belts, connectors, and assemblies.
- Ardisam will furnish with each new engine/equipment written instructions for the maintenance and use of the engine/equipment by the owner.



Earthquake™, Division of Ardisam, Inc.
1160 8th Avenue, PO Box 666
Cumberland, WI 54829
800-345-6007 | Fax 715-822-2223
E-mail: info@Ardisam.com

All weights, specifications and features are approximate and are subject to change without notice. Due to continuous product improvements, product images may not be exact. Items used for props not included. Some assembly may be required.

Check for parts online at www.getearthquake.com or call 800-345-6007 M-F 8-5