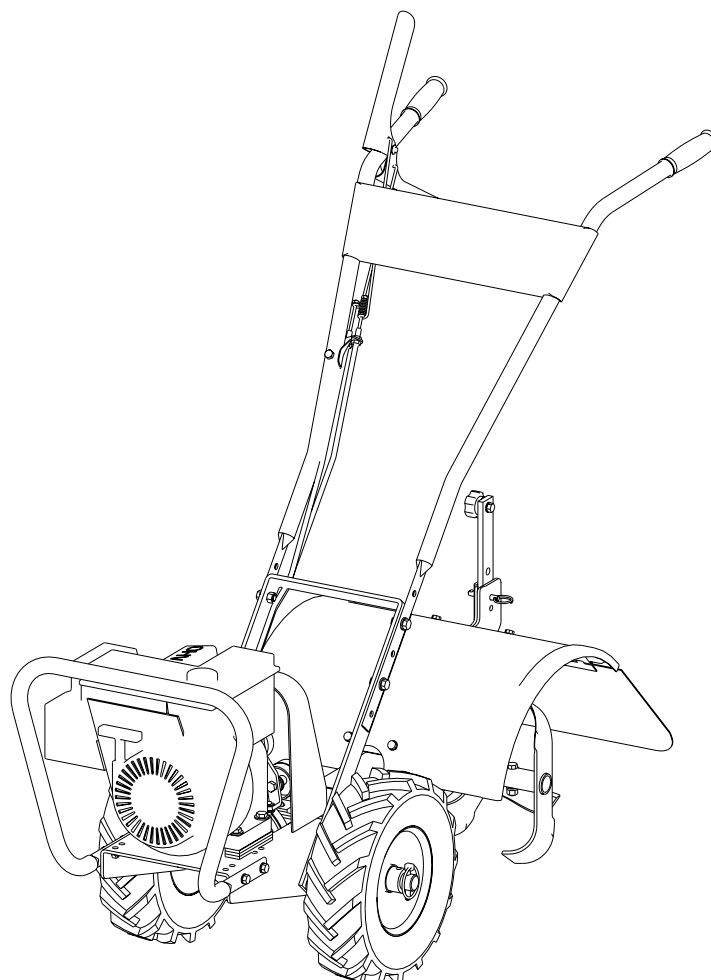


# Earthquake®

## **OPERATING & PARTS MANUAL**

**7055, 7055E, 7155, 7155E  
SRT Rototiller**



**Ardisam, Inc.**  
**1690 Elm Street, Cumberland, Wisconsin 54829**  
**(715)822-2415 • Fax (715)822-4180**

**800-345-6007**

**www.ARDISAM.COM**

OMSRT06

Rev.2/06

© Copyright 2006 Ardisam, Inc.  
All Rights Reserved. Printed in USA.





# MODEL IDENTIFICATION

<b>MODEL IDENTIFICATION</b> .....	3	Depth Regulator Lever .....	13
<b>WARRANTY</b> .....	4	Belt Tension Adjustment .....	13
<b>SAFETY RULES</b> .....	5	<b>OPERATION</b> .....	14
Owner's Responsibility .....	5	Pre-Start Inspection .....	14
General .....	5	Start-up .....	14
Preparation .....	5	Shutting Down .....	15
Operation .....	6	Tilling .....	15
Maintenance & Storage .....	6	<b>TIPS</b> .....	16
Safety Decals .....	7	Tilling Tips .....	16
<b>FEATURES</b> .....	8	Cultivating Tips .....	16
<b>UNPACKING AND ASSEMBLY</b> .....	9	<b>NORMAL CARE</b> .....	17
Unpack Tiller .....	9	Schedule .....	17
Attach Handlebar To Tiller .....	9	Servicing The Rototiller .....	17-20
Fill Engine Crankcase .....	10	<b>STORAGE</b> .....	21
<b>CONTROLS</b> .....	11	Prepare For Storage .....	21
Drive Safety Control Levers .....	11	<b>TROUBLESHOOTING AND REPAIR</b> .....	22
Reverse Handle .....	11	Troubleshooting Guide .....	22-23
<b>ADJUSTMENTS</b> .....	12	Parts Listings .....	24-32
Wheel Lockpins .....	12		
Handlebar Height Adjustment .....	12		

## MODEL IDENTIFICATION

Record your model number, manufacturer number and serial number in the space provided for easy reference. The model and manufacturer numbers can be found on the unit I.D. plate. Refer to the Engine Owner's Manual for location of engine serial number.

If you have a service problem requiring special assistance, contact a local dealer for help.

### **WARNING**

You must read, understand and comply with all safety and operating instructions in this manual before attempting to setup and operate your rototiller.

Failure to comply with all safety and operating instructions can result in loss of machine control, serious personal injury to you and/or bystanders, and risk of equipment and property damage. The triangle in the text signifies important cautions or warnings which must be followed.

### ROTOTILLER REFERENCE DATA

Model Description/Number

M/N (Manufacturer's Number)

S/N (Serial Number)

Dealer Name

Date Purchased

### ENGINE REFERENCE DATA

Engine Make/Model

Engine ID/Serial Number

### **WARNING**

Engine exhaust from this product contains chemicals known, in certain quantities, to cause cancer, birth defects, or other reproductive



# WARRANTY

## **Thank You . . .**

*for purchasing an Earthquake® forward rotating rear-tine rototiller. We guarantee that this rear-tine rototiller conforms to applicable North American safety standards, and we have worked to ensure that it will meet your exacting standards for usability and durability. With proper care, your rototiller will provide many years of service.*

*Please take time to read this manual carefully to learn how to operate and service your rototiller correctly. Failure to do so could result in personal injury or equipment damage. This manual should be considered a permanent part of your rototiller. Congratulations on your investment in quality.*

## **ONE YEAR LIMITED WARRANTY**

The Ardisam, Inc., Manufacturing Company warrants this rototiller to be free from defects in material or workmanship. Conditions of this warranty include:

### **What is covered under warranty:**

For the first year from the date of purchase, Ardisam will furnish 100% parts and labor to correct any defect caused by faulty material or workmanship. All repairs made under warranty must have prior approval from Ardisam, Inc. Items subject to normal wear and tear, such as belts, batteries, tines, shear bolts and tires, due to the nature of their function are not covered under this warranty. Any unit used in a commercial application is covered for a period of 90 days after purchase. The engine is covered under a separate warranty issued by the engine manufacturer as stated in the engine manual.

### **What is not covered under warranty:**

This warranty applies only to products which have not been repaired or altered outside our factory. It covers only defects resulting from normal use, and does not cover defects arising from misuse, alteration, negligence, or accident. This warranty applies only to the original purchaser, and is not transferable.

*This warranty supersedes all other warranties either expressed or implied and all other obligations or liabilities on our part. Ardisam, Inc., does not assume, and does not authorize any other person to assume for us, any liability in connection with the sale of our products. This guarantee is void unless the warranty card is properly filled out and returned to Ardisam, Inc., Cumberland, Wisconsin, within two weeks of the purchase date.*



## **ARDISAM, INC.**

1690 Elm Street; P.O. Box 666  
Cumberland, Wisconsin 54829  
Phone (715) 822-2415 Fax (715) 822-4180

**1-800-345-6007**

WWW.ARDISAM.COM




# SAFETY RULES

## OWNER'S RESPONSIBILITY

*Safe and effective use of the rototiller is the owner's responsibility.*

1. Read and follow all safety instructions.
2. Maintain the tiller according to directions and schedule included.
3. Ensure that anyone who uses the tiller is familiar with all controls and safety precautions.

## GENERAL

 The Safety Alert symbol shown here is used to alert you to important safety information that must be read, fully understood, and followed at **all** times when handling, transporting, operating, servicing, or storing your rototiller unit.

Each safety alert symbol is followed by a "signal word" that advised you of the relative intensity, or level, of the hazard the safety alert instructions pertain to.

The following list of signal words is being provided to help you understand the intensity levels associated with each signal word used in this manual.

### DANGER

The signal word "DANGER" is used when a serious injury or fatality will result if the safety instructions that follow this signal word are not obeyed.

### WARNING

The signal word "WARNING" is used when a serious injury or fatality could result if the safety instructions that follow this signal word are not obeyed.

### CAUTION

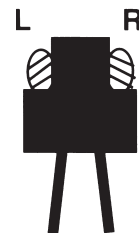
The signal word "CAUTION" is used when personal injury, or property or equipment damage could result if the safety instructions that follow this signal word are not obeyed.

## CAREFULLY READ THIS MANUAL AND FOLLOW ALL INSTRUCTIONS.

- Be familiar with all controls before operating the tiller. Your tiller is equipped with a safety device that enables you to stop the wheels and tines quickly in an emergency. Learn how the drive safety control lever works and how to control the tiller at all times.
- Never allow children to operate the tiller. Keep small children away from the area being tilled. Do not allow adults to operate the tiller without proper instruction.

### IMPORTANT

The right and left sides of your rototiller are determined from the operating position as you face the direction of forward travel.



## PREPARATION

- Dress appropriately when operating the tiller. Always wear sturdy footwear. Never wear sandals, sneakers, or open shoes, and never operate the tiller with bare feet. Do not wear loose clothing that might get caught in moving parts.
- Carefully inspect the area to be tilled, and remove all foreign objects. Do not till above underground water lines, gas lines, electric cables, or pipes. Do not operate the tiller in soil with large rocks and foreign objects which can damage the equipment.
- Disengage all clutches and leave all control levers in the neutral position before starting the engine.
- Handle fuel with care; it is highly flammable.
  - a. Use an approved fuel container.
  - b. Never add fuel to a running engine or hot engine.
  - c. Fill fuel tank outdoors with extreme care. Never fill fuel tank indoors.
  - d. Replace gasoline cap securely and clean up spilled fuel before restarting.
- Never attempt to make any adjustments while the engine is running.

### IMPORTANT

**Engine is shipped from factory without oil. You must add engine oil before starting engine.**



# SAFETY RULES

---

## OPERATION

- Never operate the tiller without guards, covers, and hoods in place.
- Never start the engine or operate the tiller with the wheels in the free-wheel position. Make sure the wheel lockpins are engaged through the wheel hubs and wheel axle. The wheels act as a brake to keep the tiller at a controlled speed. Disengage wheel lockpins to permit free-wheeling only when engine is stopped.
- Keep hands, feet, and clothing away from rotating parts. Keep clear of tiller tines at all times.
- Tines and wheels rotate when tiller is engaged in **forward** or **reverse**-- in **forward**, tines and wheels rotate when the drive safety control lever, labeled "**FORWARD**", is pulled toward the handlebar. In **reverse**, wheels and tines rotate when the drive safety control lever, labeled "**REVERSE**" is pulled toward the handlebar. Releasing the drive safety control levers to the **neutral** position stops the wheels and tines. Do not operate both drive safety control levers at the same time.
- Be extremely cautious when operating in **reverse**. Take extra care to avoid slipping or falling, and to keep feet clear of tines.
- Exercise extreme caution when operating on or crossing gravel drives, walks, or roads. Stay alert for hidden hazards or traffic.
- After striking a foreign object, stop the engine, remove the wire from the spark plug, thoroughly inspect the tiller for any damage, and repair the damage before restarting and operating the tiller.
- If vegetation clogs the tines, raise the handlebars to elevate the tines, and run the tiller in **reverse**. If this does not clean clogged vegetation from the tines, **STOP THE ENGINE AND DISCONNECT THE SPARK PLUG WIRE** before removing vegetation by hand.
- Engine muffler will be hot from operation. Do not touch it with bare skin or a severe burn may result.
- If the unit should start to vibrate abnormally, stop the engine and check immediately for the cause. Vibration is generally a warning of trouble.
- Do not run the engine indoors; exhaust fumes are dangerous.
- Do not overload the machine capacity by attempting to till too deep at too fast a rate.
- Never operate the machine at high transport speeds on slippery surfaces. Look behind and use care when backing.
- Never allow bystanders near the unit.

- Use only attachments and accessories approved by the manufacturer of the tiller.
- Never operate the tiller without good visibility or light.
- Be careful when tilling in hard ground. The tines may catch in the ground and propel the tiller backward. If this occurs, let go of the handlebars and do not restrain the machine.
- Take all possible precautions when leaving the machine unattended. Disengage all controls levers, stop the engine, wait for all moving parts to stop, and make certain guards and shields are in place.
- When leaving the operating position for any reason:
  - shut off the engine.
  - wait for all moving parts to stop.

## MAINTENANCE AND STORAGE

- Keep machine, attachments, and accessories in safe working condition.
- Check shear bolts, engine mounting bolts, and other bolts at frequent intervals for proper tightness to be sure the equipment is in safe working condition.
- To prevent accidental starting, always disconnect and secure the spark plug wire from the spark plug before performing tiller maintenance.
- Never run the engine indoors. Exhaust fumes are deadly.
- Always allow muffler to cool before filling fuel tank.
- Never store equipment with gasoline in the tank inside a closed building where fumes may reach an open flame or spark. Allow the engine to cool before storing in any building.
- Always refer to the operator's guide instructions for important details if the tiller is to be stored for an extended period.



# SAFETY RULES

## SAFETY DECALS

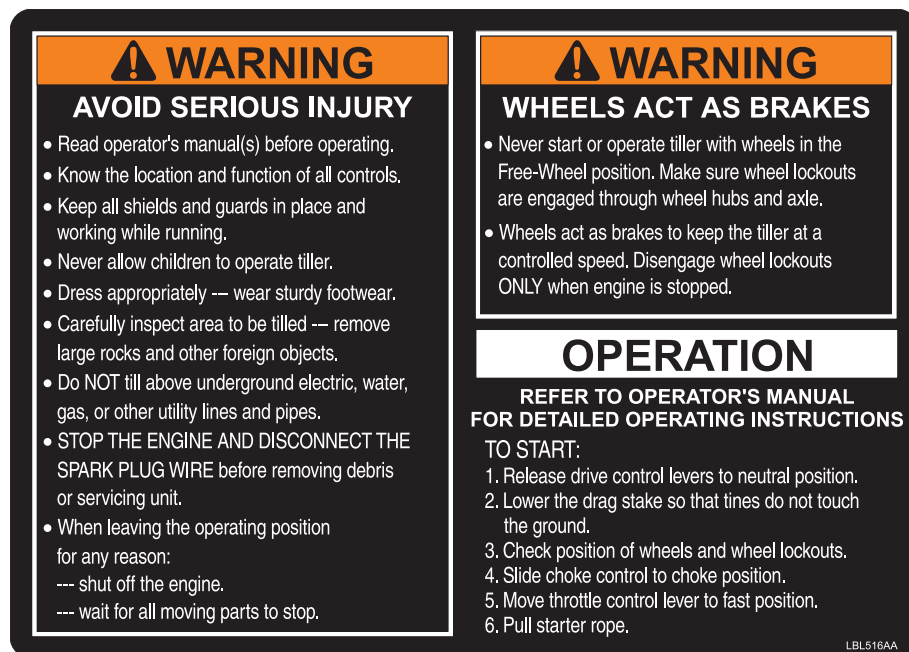
This rototiller unit has been designed and manufactured to provide you with the safety and reliability you would expect from an industry leader in outdoor power equipment manufacturing.

Although reading this manual and the safety instructions it contains will provide you with the necessary basic knowledge to operate this equipment safely and effectively, we have placed several safety labels on the tiller to remind you of this important information while you are operating the unit.

These important safety labels are illustrated below, and are shown here to help familiarize you with the location and content of the safety messages you will see as you perform normal tilling operations. Please review these labels now, and if you have any questions regarding their meaning or how to comply with these instructions, reread the complete safety instruction text on the preceding pages, or contact your local dealer.

Should any of these labels become unreadable because of being worn, faded, or otherwise damaged during the use of your tiller, please use the part number information provided to order a replacement label from your local authorized dealer.

These labels are easily applied, and will act as a constant visual reminder to you, and others who may use the equipment, to follow the safety instructions necessary for safe, effective operation of your rototiller.



**Part No. LBL516AA**  
**WARNING INSTRUCTIONS**  
**Hood Decal**



**Part No. LBL516J**  
**TINES DANGER**  
**Hood Flap Decal**



**Part No. LBL516C**  
**WARNING**  
**Belt Cover Decal**

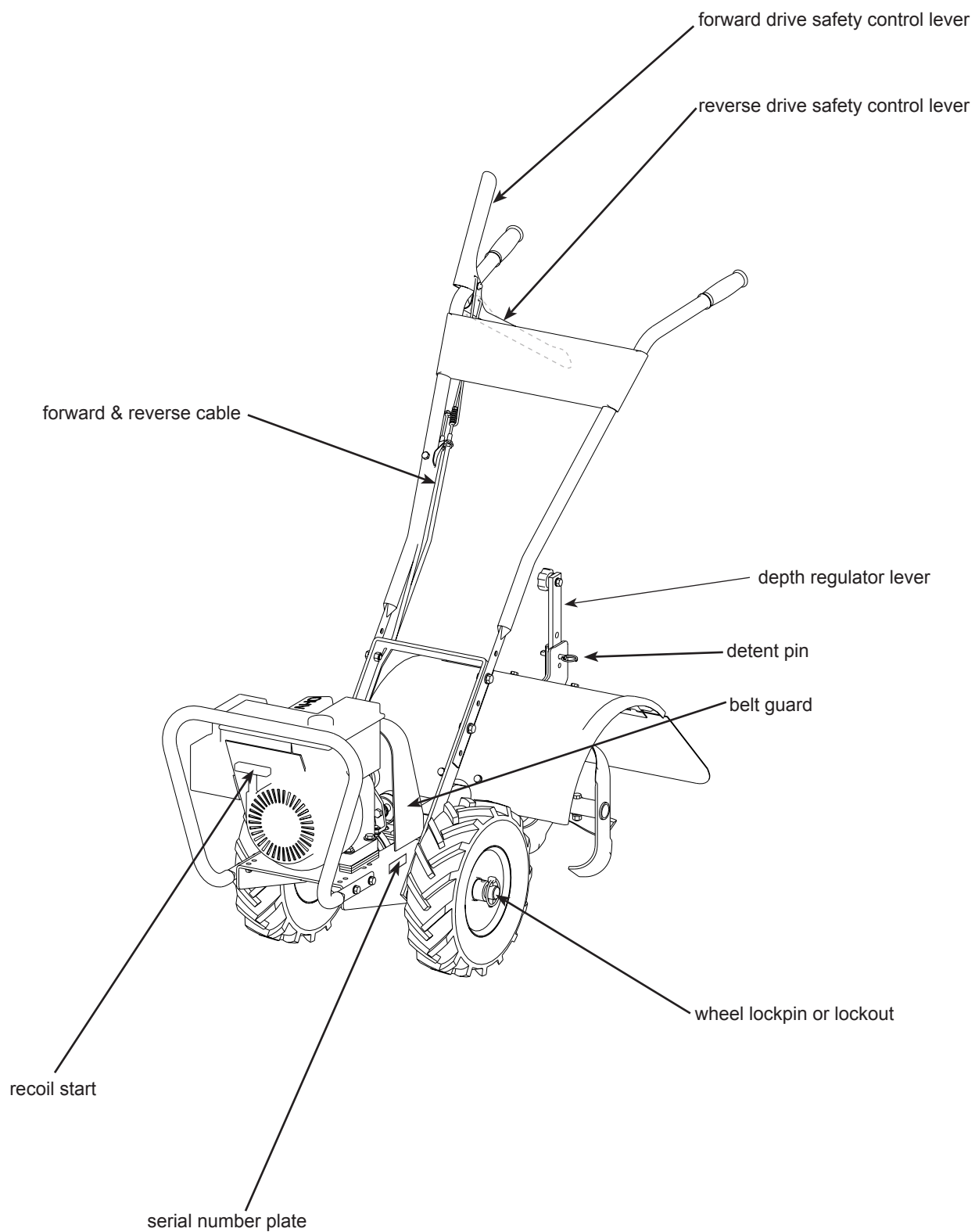


**Part No. LBL516F**  
**FREE HAND HERE**  
**Bumper Guard Decal**



# FEATURES

## ALL SRT MODELS





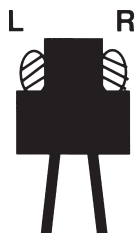


# UNPACKING AND ASSEMBLY

Your rototiller comes fully assembled except for a few parts. The following instructions will help you unpack your tiller and assemble and adjust your tiller's depth regulator lever, cable tension and handlebar height. You will need 2- 9/16" wrenches.

## IMPORTANT

The right and left sides of your rototiller are determined from the operating position as you face the direction of forward travel.



## UNPACK TILLER

1. Open top of carton and remove handlebar assembly.



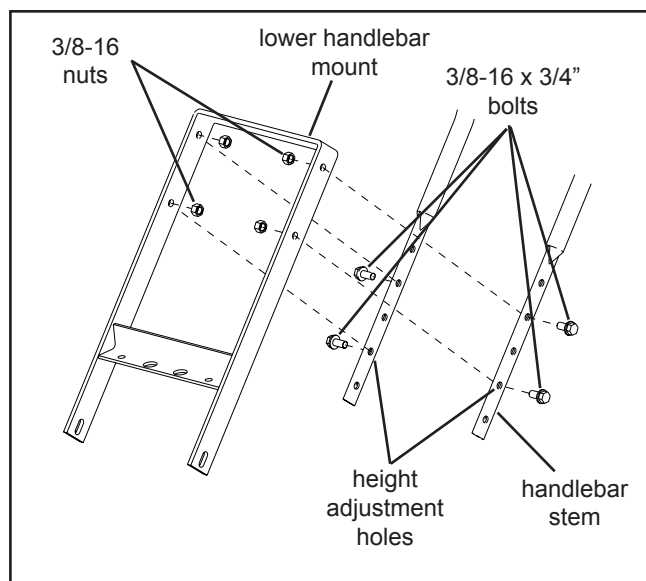
## CAUTION

Do not try to lift the rototiller from the carton.

2. Find parts packet. Parts packet contains:
  - 4- 3/8-16 x 3/4" hex head bolts
  - 4- 3/8-16 locknuts
  - 1- 5/16-18 x 3/4" hex head bolt
  - 1- detent pin
  - 1- five star knob
3. Cut open end of carton and remove machine by:
  - a. Removing lockpins on wheels.
  - b. Roll tiller from carton.

## ATTACH HANDLEBAR TO TILLER

1. Place handlebar stems on outside of lower handle bar mount and align lower holes.
2. Insert one 3/8-16 x 3/4" bolt for each side in lower holes at the desired handlebar height.
3. Start 3/8-16 nuts on each bolt.
4. Insert one 3/8-16 x 3/4" bolt for each side in upper holes.
5. Tighten all 3/8-16 nuts.





# UNPACKING AND ASSEMBLY

## FILL ENGINE CRANKCASE

### IMPORTANT

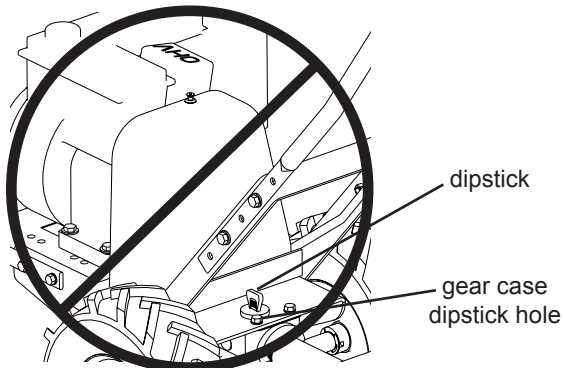
Engine is shipped from factory without oil. You must add engine oil before starting engine.

1. Add oil according to engine manual. **Do not overfill.** Use a clean, high quality detergent oil. Container must be marked A.P.I. Service SF - SJ. Use no special additives with recommended oils. **Do not mix oil with gasoline.** Oil level must be full. Check the oil level by removing oil fill plug. Oil level should be up to the bottom of the fill plug opening.
2. Always check oil level before starting engine. Refer to engine manual for capacity and type of oil to use.



### CAUTION

Do not add engine oil into gear case dipstick hole.



**NO ENGINE OIL!**



# CONTROLS

## DRIVE SAFETY CONTROL LEVERS

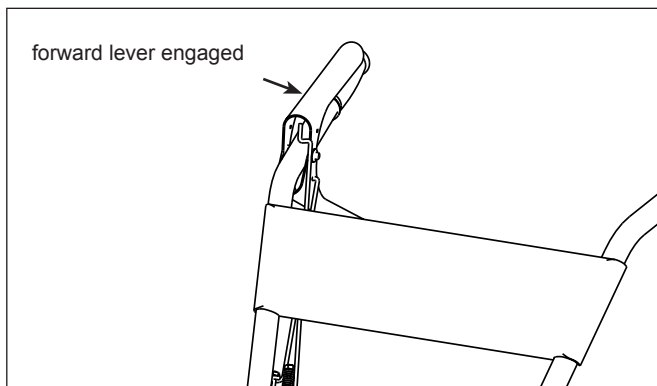
### FORWARD LEVER

*Engages wheels and tines into forward.*

Pulling the drive safety control lever labeled (FORWARD) toward the handlebar engages the wheels and tines. Releasing the lever stops the wheels and tines and brings the tiller to a complete stop.

#### CAUTION

Do not operate both “FORWARD” and “REVERSE” drive safety control levers at the same time.



#### CAUTION

This information is provided here only to introduce the controls. **DO NOT START THE ENGINE AT THIS TIME.** Starting and operating instructions are given on page 14. Please read this section and all operating and safety instructions before starting your tiller.

#### WARNING

ENGINE SHOULD BE OFF BEFORE ADJUSTING ANY CONTROLS.

#### CAUTION

- ❖ As a safety precaution, the drive safety control levers will not lock in the forward or reverse position.
- ❖ To stop the wheels and tines at any time release the drive safety control levers.

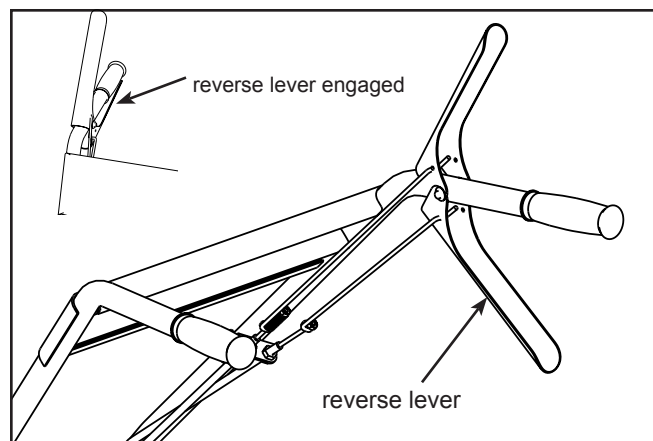
### REVERSE LEVER

*Engages wheels and tines into reverse.*

Pulling the drive safety control lever labeled (REVERSE) toward the handlebar reverses tiller. Releasing the lever stops the wheels and tines.

#### CAUTION

Do not operate both “FORWARD” and “REVERSE” drive safety control levers at the same time.



#### WARNING

Extreme caution should be used when operating rototiller in the reverse direction.



#### CAUTION

- ❖ As a safety precaution, the reverse drive safety control lever will not lock in reverse.
- ❖ To stop the wheels and tines at any time, release the reverse handle.
- ❖ Do not operate both the reverse and forward drive safety control levers at the same time.

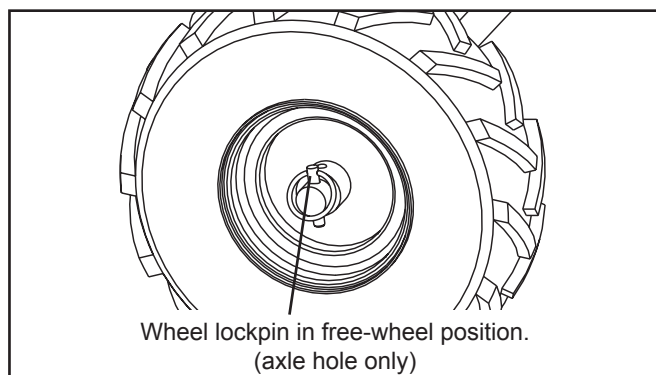


# ADJUSTMENTS

## WHEEL LOCKPINS (7055, 7055E)

*Place wheels in tilling position.*

1. Remove lockpin. Align hole in axle with hole in wheel hub.
2. Insert lockpin through holes, fold lockpin ring to secure pin to axle.
3. Firmly lock wheel and axle together before tilling.
4. Repeat for other wheel.



**NOTE: Always have both wheel lockpins in or out. Do not operate tiller with only one wheel locked.**

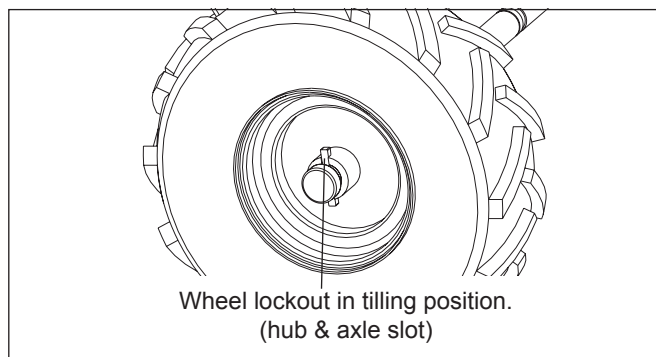
*To place wheels in free-wheel position.*

1. Remove lockpin. Slide wheel inward toward machine.
2. Insert pin in axle only.
3. Wheel should turn freely on axle.

## WHEEL LOCKOUTS (7155, 7155E)

*Place wheels in tilling position.*

1. Pull knob in center of wheel out, away from machine.
2. Rotate knob and lockout to align with slot on axle, release knob. Rotate wheel to align slot in wheel hub with lockout.
3. Firmly lock wheel and axle together before tilling.
4. Repeat for other wheel.



**NOTE: Always have both wheel lockouts in or out. Do not operate tiller with only one wheel locked.**

*To place wheels in free-wheel position.*

1. Pull knob in center of wheel out, away from machine.
2. Rotate knob and lockout to align lockout with detent in end of axle. Release knob.
3. Wheel should turn freely on axle.

## ⚠ WARNING

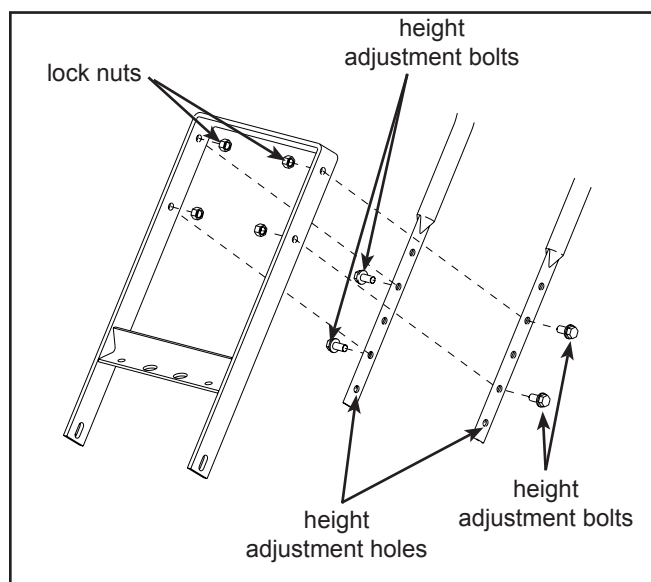
**Never start engine or operate tiller with wheels in free-wheel position. The free-wheel position is for transporting the tiller long distances over level ground--do not attempt to move the tiller up or down steep grades in the free-wheel position.**

## HANDLEBAR HEIGHT ADJUSTMENT

*Adjust handlebar height.*

The ideal height of the handlebar varies with operator height and the depth of tilling. To adjust handlebar height:

1. Unscrew nuts and remove top and bottom bolts on each side.
2. Align handlebar to desired holes on the lower handlebar mount.
3. Install bolts and nuts. Retighten.





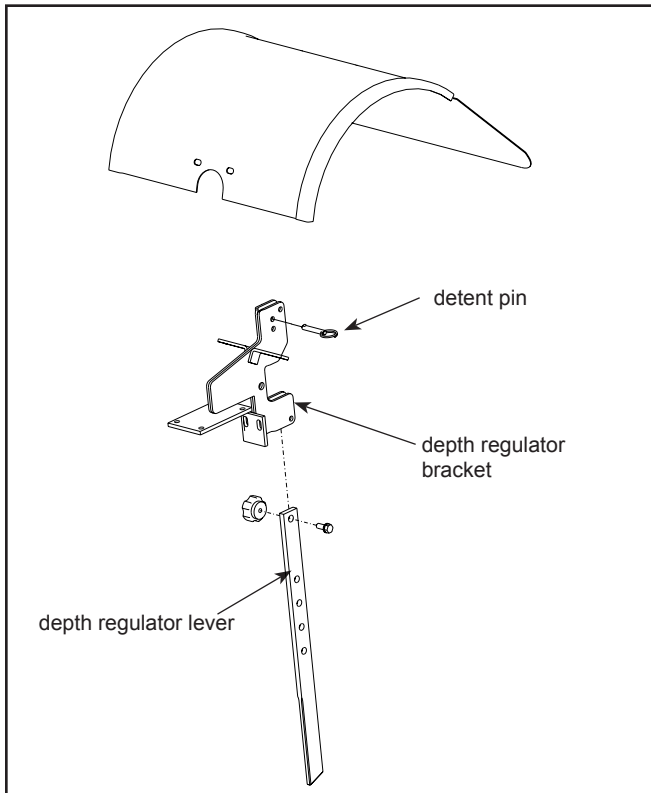
# ADJUSTMENTS

## DEPTH REGULATOR LEVER

*Tilling depth is controlled by the height of the depth regulator lever.*

To adjust tilling depth.

1. Remove detent pin.
2. Raise the depth regulator lever to position tines at chosen tilling depth.
3. Align hole in depth regulator lever with hole in depth regulator bracket and replace detent pin.



**Depth Regulator Lever Down** = Shallower tilling. Place the detent pin in the top hole of the depth regulator lever for shallowest tilling.

**Depth Regulator Lever Up** = Deeper tilling. Place the detent pin in the bottom hole of the depth regulator lever for deepest tilling.

### WARNING

Always set the depth regulator lever in the transport position before starting engine, that is, place the detent pin in the highest hole of the depth regulator lever.

### WARNING

Do not adjust tilling depth unless drive safety control levers are released to neutral position.

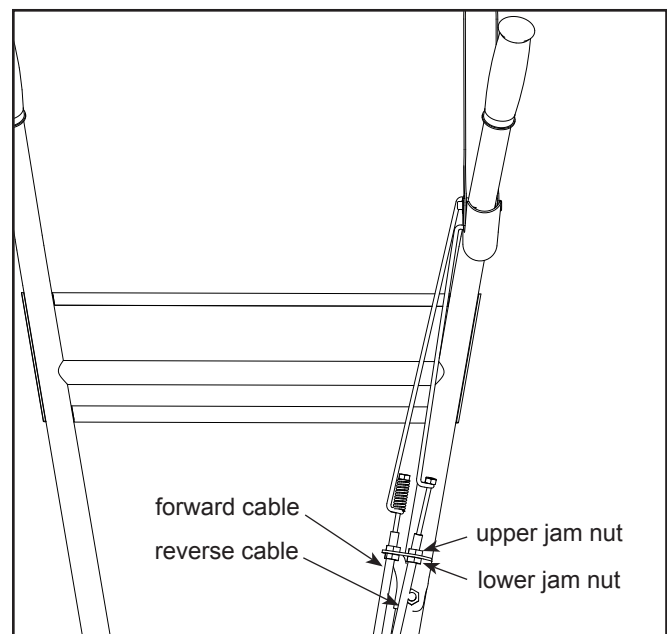
## BELT TENSION ADJUSTMENT

Proper belt tension is critical to good performance. After 1/2 hour of operation, all cables may have to be adjusted due to initial stretch. Thereafter, check tension after every 2 hours of operation.

### To increase belt tension:

1. Loosen upper jam nut. Turn nut up cable in 1/8" increments.
2. Tighten lower jam nut.
3. Check adjustment.

This procedure can be repeated until conduit adjustment bolts have no more adjustment left. If no more adjustment can be made, belt may have to be replaced.





# OPERATION

## PRE-START INSPECTION

1. Make sure all safety guards are in place and all nuts and bolts are secure.
2. Check oil level in engine crankcase. See your engine manual for procedure and specifications.
3. Inspect air cleaner for cleanliness. See your engine manual for procedure.
4. Check the fuel supply. Fill the fuel tank no closer than 1 inch from top of tank to provide space for expansion. See your engine manual for fuel recommendations.
5. Be sure spark plug wire is attached and spark plug is tightened securely.
6. Check position of wheels and wheel lockouts.
7. Check depth regulator lever position.

### CAUTION

**Please do not start your tiller until you have read the Manual that came with your engine, and the sections in this manual titled Controls, Adjustments and Safety. If you have read these, follow the steps below to start your tiller. Always perform this pre-start checklist before starting the engine.**

### WARNING

**Gasoline is highly flammable and must be handled with care. Never fill the tank when the engine is hot or running. Always move outdoors to fill the tank.**

### WARNING

**Wheels must always be locked in the TILLING position when engine is running. Do not operate the tiller with the wheel lockouts unlocked. Always set the wheels in tilling position before starting engine.**

### WARNING

**Always put the depth regulator lever in the transport position before starting engine. Tines should clear the ground.**

### IMPORTANT

**ENGINE IS SHIPPED FROM FACTORY WITHOUT OIL. YOU MUST ADD ENGINE OIL BEFORE STARTING ENGINE.**

## START-UP

The controls required to start and run the rototiller are located on the engine and are marked “Choke” and “Throttle”.

A more detailed description of engine operation and all related precautions and procedures can be found in the engine manufacturer’s manual that accompanies each tiller.

### Cold Starts

1. Move choke lever to full choke position.
2. Move throttle lever to “start”.
3. Pull starting rope out slowly one time and allow to return normally.
4. Pull starting rope out rapidly, and allow rope to return normally.
5. When engine starts, gradually move choke lever to “no choke” position and increase throttle speed.

### Restarting A Warm Engine

Restarting an engine that is already warm from previous running does not normally require use of the choke.

1. Move throttle lever to “start” position.
2. Pull starting rope out rapidly until engine starts. Allow rope to return normally.
3. Adjust throttle speed to “high” for best tiller action.

### Idle Speed

Use the “low” position on the throttle lever to reduce stress on the engine when tilling is not being performed. Lowering the engine speed to “idle” the engine will help extend the life of the motor, as well as conserve fuel and reduce the noise level of the equipment.

### Operating Speed

For normal tilling, set the throttle lever to “fast”.

### DANGER

**Always keep hands and feet clear of rotating machine parts.**



# OPERATION

## WARNING

Temperature of muffler and near by areas may exceed 150° F. Avoid these areas.

## WARNING

Do not move choke control to **CHOKE** to stop engine. Backfire or engine damage may occur.

## SHUTTING DOWN

## WARNING

To stop the engine at any time, move throttle control to the off position. To stop wheels and tines at any time, release drive safety control levers to neutral position.

## DANGER

Engine and surrounding parts become extremely hot during normal use, and will cause serious burn injuries if touched before the engine has cooled.

Allow engine to cool completely before touching these hot surfaces.

## TILLING

1. Adjust the depth regulator lever to desired tilling depth.

**NOTE:** Raise depth regulator lever up one hole at a time, testing tiller operation after each raise. Raising depth regulator lever too high can result in loss of control of tiller!

2. Move the throttle control to **fast**.
3. Place the tiller in **forward** by pushing down on the drive safety control lever labeled "FORWARD"--this will engage the wheels and tines.

**NOTE:** You can slow the tiller's forward advance at any time by putting slight downward pressure on the handlebars, or you can stop the tiller by releasing the drive safety control levers to the neutral position.

## WARNING

To stop wheels and tines at any time, release drive safety control levers to neutral position.

## WARNING

Always release drive safety control levers to neutral position before adjusting the depth of the regulator lever.

## IMPORTANT

Practice operating the controls and tiller with tines out of ground before beginning to till. It is important that you know how to use the tiller properly, how to keep control at all times, how to stop the tines and wheels from turning, and how to stop the engine if necessary. If you do not know how to do these things, read the Controls, Adjustments and Safety sections before proceeding.



## TIPS

### TILLING TIPS

*The key to successful tilling is to begin with a shallow cut on the first pass, and then work an inch or two deeper on each successive pass.*

- ★ Tilling depth will vary with ground conditions.
- ★ When beginning to till in unbroken ground or in extremely hard soil, set the detent pin in the highest hole of the drag stake (follow instructions under Tilling on previous page). This will allow for shallow tilling. With the drag stake in this position, make several light passes over the area to be tilled. Reset for deeper depths with successive passes.
- ★ If tiller jumps or skids uncontrollably, lower the drag stake by placing the detent pin in a higher hole. This will allow for shallower tilling. Hold firmly to the handlebars to control sudden lurches.
- ★ If weeds, tall grasses, vines, or other materials clog or jam the tines, reverse the tiller to unwind vegetation.

*Immediately release the drive control levers if the tines jam or you strike a foreign object. With drive control levers in neutral position, push throttle control to **stop** position to stop the engine. Disengage the spark plug wire. When tines have stopped, remove foreign objects and check for damage.*

### CULTIVATING TIPS

If you plan to use your tiller for cultivating:

- ★ Plant rows on 20" - 22" centers for ease of turning.
- ★ Set the depth regulator lever with the detent pin in one of the higher holes. This will allow the shallow cultivation necessary to turn over weeds, and break up and aerate the soil.

#### **WARNING**

Extreme caution must be taken in selecting tilling depth. If you attempt to till too deeply for soil conditions, that is, with the drag stake in too high a position, loss of control could result.

#### **WARNING**

If removing material from the tines by hand, stop engine and remove spark plug wire first.





# NORMAL CARE

## SCHEDULE

Your rototiller has been designed and produced by the industry's leading manufacturer of outdoor power equipment to provide you with years of reliable operation.

Keeping your tiller in top running condition will prolong its life, and help you obtain optimum performance whenever you wish to till your garden.

Please read this normal care schedule, and observe these recommended care operating intervals to extend the life of your unit.

Maintenance Operation	Page	Before Each Use	50 hrs or Every Season
Change forward/reverse belt	18		X
Engine maintenance	19	X	X
Check or fill engine crankcase	19,EM	X	2
Check tiller transmission grease	20	X	
Check tire pressure	20	X	
Lubrication	20	X	
Clean tine axle shaft	20	X	
Lubricate wheel axle shaft	21		X
Check throttle control adjustment	EM		1

**EM** = See engine manual

- 1 Adjust throttle control after first 3 hours of operation or if engine is hard to start or run-on occurs.
- 2 Change oil after first 5-8 hours of use, then after every 50 hours or every season. Change oil every 25 hours when operating under heavy load or in high temperatures.

## SERVICING THE ROTOTILLER

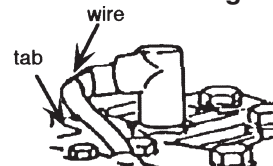
### General

The following information will help you make the necessary checks and perform the procedures required to follow the normal care recommendations made for your rototiller unit.

If you prefer, your local authorized dealer can make these checks and perform the required procedures for you.

### WARNING

To prevent accidental starting:



**Engine must be turned off and cool, and spark plug wire must be removed and secured from spark plug before checking and adjusting engine or equipment.**



# NORMAL CARE

## Change Forward/Reverse Belt

1. Turn off engine. Engine must be cool.
2. Remove spark plug wire and secure from spark plug.
3. Remove belt guard.

★ remove the forward belt from the forward engine pulley:

- gently pull the engine recoil rope to rotate the pulley.
- with the pulley turning, force the forward belt out of the V-groove.
- slide the belt free of the engine pulley.
- pull the forward belt down and out of the way.

★ remove the reverse belt from the reverse engine pulley:

- gently pull the engine recoil rope to rotate the pulley.
- with the pulley turning, force the reverse belt out of the V-groove.
- slide the belt free of engine pulleys and reverse belt guides.
- pull belt down and away from transmission pulley.

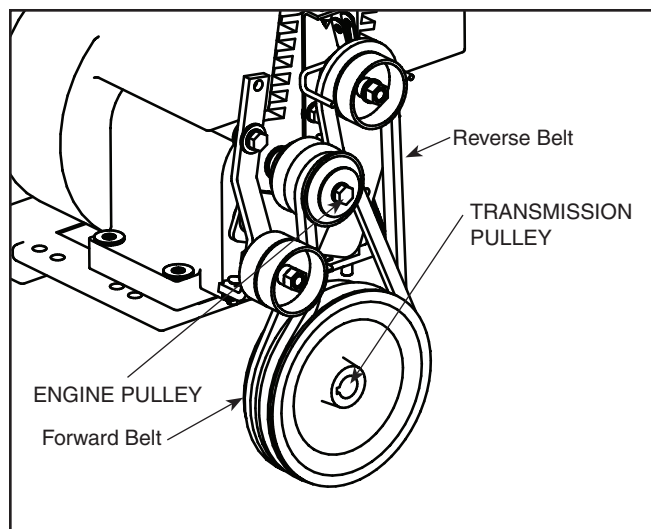
★ install new reverse belt:

- thread belt up from bottom.
- place belt around transmission pulley in groove.
- place belt under reverse belt guides.
- gently pull engine recoil rope while forcing the belt over the edge of the engine pulley into the V-groove.

★ install new forward belt:

- place forward belt in transmission pulley groove.
- gently pull the engine recoil rope to rotate the pulley while forcing the forward belt into the V-groove.

4. Replace belt guard.
5. Attach spark plug wire.



### BELT REPLACEMENT PART #'S:

727A (forward)

730 (reverse)



# NORMAL CARE

## CAUTION

Do not operate tiller before reading the engine manual provided in the parts packet.

## WARNING

Temperature of muffler and near by areas may exceed 150° F. Avoid these areas.

## IMPORTANT

Engine can overheat and become damaged if debris blocks the cooling system or rotating screen.

## IMPORTANT

Never run engine without complete air cleaner installed on engine.

## Engine Maintenance

Refer to the engine manual included in your parts packet for information on engine maintenance. Your engine manual provides detailed information and a maintenance schedule for performing the following tasks:

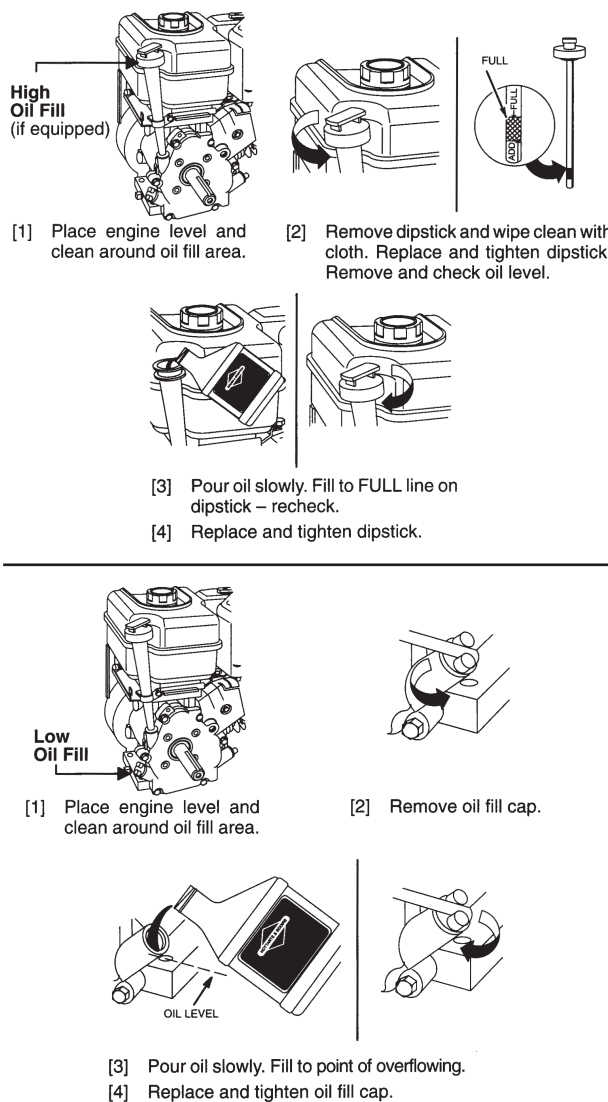
1. Check oil level before each use or after every 8 hours of operation.
2. Change oil after first 5-8 hours of operation. Change oil while engine is warm. Refill with new oil of recommended grade.
4. Check spark plug yearly or every 100 hours of operation.
5. Service air cleaner.
6. Keep engine and parts clean.
7. Check engine and equipment often for loose nuts and bolts, keep these items tightened.

## IMPORTANT

Engine is shipped from factory without oil. You must add engine oil before starting engine.

## Check or Fill Engine Crankcase

1. Add oil according to engine manual. **Do not overfill.** Use a clean, high quality detergent oil. Container must be marked A.P.I. Service SF - SJ. Use no special additives with recommended oils. **Do not mix oil with gasoline.** Oil level must be full. Check the oil level by removing oil fill plug. Oil level should be up to the bottom of the fill plug opening.
2. Always check oil level before starting engine. Refer to engine manual for capacity and type of oil to use.



Adapted from Briggs & Stratton Corporation, Form No. 274263-10/99.



# NORMAL CARE

## Check Tiller Transmission Grease

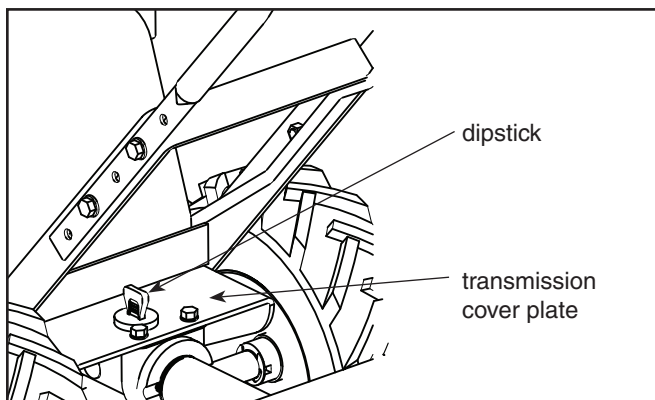
### IMPORTANT

**TILLER TRANSMISSION IS SHIPPED FROM FACTORY WITH THE PROPER AMOUNT OF LIQUID GREASE.**

Check the grease level annually. To check the grease level:

1. Move tiller to level ground.
2. Remove grease level dipstick located between the handlebar mounts on the engine mount. Correct grease level is indicated between the high and low levels on the dipstick.
3. Replace grease level dipstick in the filler hole.
4. Note that the front wheel transmission and rear tine transmission are one common reservoir. When you add to the front transmission, you must wait a short period of time for the grease to flow rearward and equalize in both front and rear. The dipstick will read correctly on level ground for both gear units.

(Use Mystic 00 {Manufacturers PN 1690} transmission fluid)



### IMPORTANT

**When replacing grease, the tiller transmission holds 18-22 ounces. DO NOT OVERFILL.**

## Check Tire Pressure

Recommended tire pressure is 20 PSI. If tires do not have equal pressure, tiller will pull to one side.

## Lubrication

Proper lubrication of moving mechanical parts of your rototiller is a very important part of care and maintenance. You should oil the moving parts shown at 10 hour intervals using a 30 weight oil.

## Clean Tine Axle Shaft

1. Turn off engine. Engine must be cool.
2. Remove spark plug wire and secure from spark plug.
3. Tip the tiller forward. Block the tiller in position so that it rests on the engine mount and the tines are exposed.
4. Remove all vegetation, string, wire, and other material that may have accumulated on the axle between the inside set of tines and the seal on the transmission housing.
5. Tip the tiller back to a level position.
6. Replace spark plug wire.



# STORAGE

## PREPARE FOR STORAGE

Follow the steps below to prepare your tiller for storage. Read your engine manual for detailed instructions on preparing the engine for storage.

1. Protect wheels and axles from rust:
  - Remove lockpin and slide wheel off hub.
  - Coat the axles lightly with axle grease.
  - Slide wheel back on hub and insert lockpin.
2. Drain fuel system completely following engine manufacturer's instructions or add fuel stabilizer to prevent fuel from gumming up during extended storage period.
3. While engine is still warm, drain the oil from the engine. Refill with fresh oil of the recommended grade.
4. Clean external surfaces, engine and cooling fan.
5. Remove spark plug, pour one ounce of SAE 30 oil into spark plug hole.
6. Plug hole and pull starter cord slowly to distribute oil evenly in cylinder head area.
7. Reinstall spark plug.
8. Transport unit to a suitable storage location. If you have chosen to use a fuel stabilizer and have not drained the fuel system, follow all safety instructions and storage precautions in this manual to prevent the possibility of fire from the ignition of gasoline fumes. Remember, gasoline fumes can travel to distant sources of ignition and ignite, causing risk of explosion and fire.
9. If there is any possibility of unauthorized use or tampering, remove the spark plug and store it in a safe place before storing the rototiller unit away. Be sure to plug the spark plug hole to prevent foreign material from entering.

### **WARNING**

**Do not store tiller in an unventilated area where fuel fumes may reach flame, sparks, pilot lights or an ignited object. Drain fuel outdoors away from any ignition sources. Use only approved fuel containers.**



# TROUBLESHOOTING AND REPAIR

## TROUBLESHOOTING GUIDE

While normal care and routine maintenance will extend the life of your rototiller, prolonged or constant use may eventually require that service be performed to allow it to continue operating properly. The troubleshooting guide below lists the most common problems, causes and remedies.

### **⚠ WARNING**

**Practice safety at all times. Engine must be turned off and allowed to cool, and spark plug wire must be disconnected and secured before attempting any maintenance or repair.**

**Failure to comply with this safety requirement can result in serious personal injury to you or bystanders.**

PROBLEM	REMEDY/ACTION
Engine will not start	<ul style="list-style-type: none"><li>• Add gas to gas tank.</li><li>• Connect spark plug wire to spark plug</li><li>• Throttle must be positioned at choke for a cold start</li></ul>
Engine runs rough, floods during operation	<ul style="list-style-type: none"><li>• Clean or replace air cleaner</li></ul>
Engine is hard to start	<ul style="list-style-type: none"><li>• Drain old fuel and replace with fresh. Use gas stabilizer at end of season</li><li>• Make sure spark plug wire is securely attached to spark plug</li><li>• Drive safety control levers must be released to <b>neutral position</b> to start the engine</li></ul>
Engine misses or lacks power	<ul style="list-style-type: none"><li>• Raise the tines for shallower tilling by lowering the depth regulator lever</li><li>• Remove and clean fuel tank</li><li>• Clean or replace air cleaner</li><li>• Improper carburetor adjustment, take to authorized engine service center</li><li>• Replace spark plug and adjust gap</li><li>• Drain and refill gas tank and carburetor</li></ul>
Engine will not stop when throttle control is positioned at stop	<ul style="list-style-type: none"><li>• See engine manual to check and adjust throttle linkage</li></ul>
Tiller moves forward during starting	<ul style="list-style-type: none"><li>• Drive safety control levers must be released to <b>neutral position</b> to start the engine</li></ul>
Tiller is difficult to control when tilling (machine jumps or lurches forward)	<ul style="list-style-type: none"><li>• Lock wheels in tilling position</li><li>• Raise the tines for shallower tilling by lowering the depth regulator lever</li></ul>
Tines turn, wheels do not turn	<ul style="list-style-type: none"><li>• Lock wheels in tilling position</li><li>• Internal transmission failure, see your dealer</li></ul>
Tines turn, wheels turn, tiller does not move	<ul style="list-style-type: none"><li>• Lower the tines for deeper tilling by raising the depth regulator lever</li></ul>

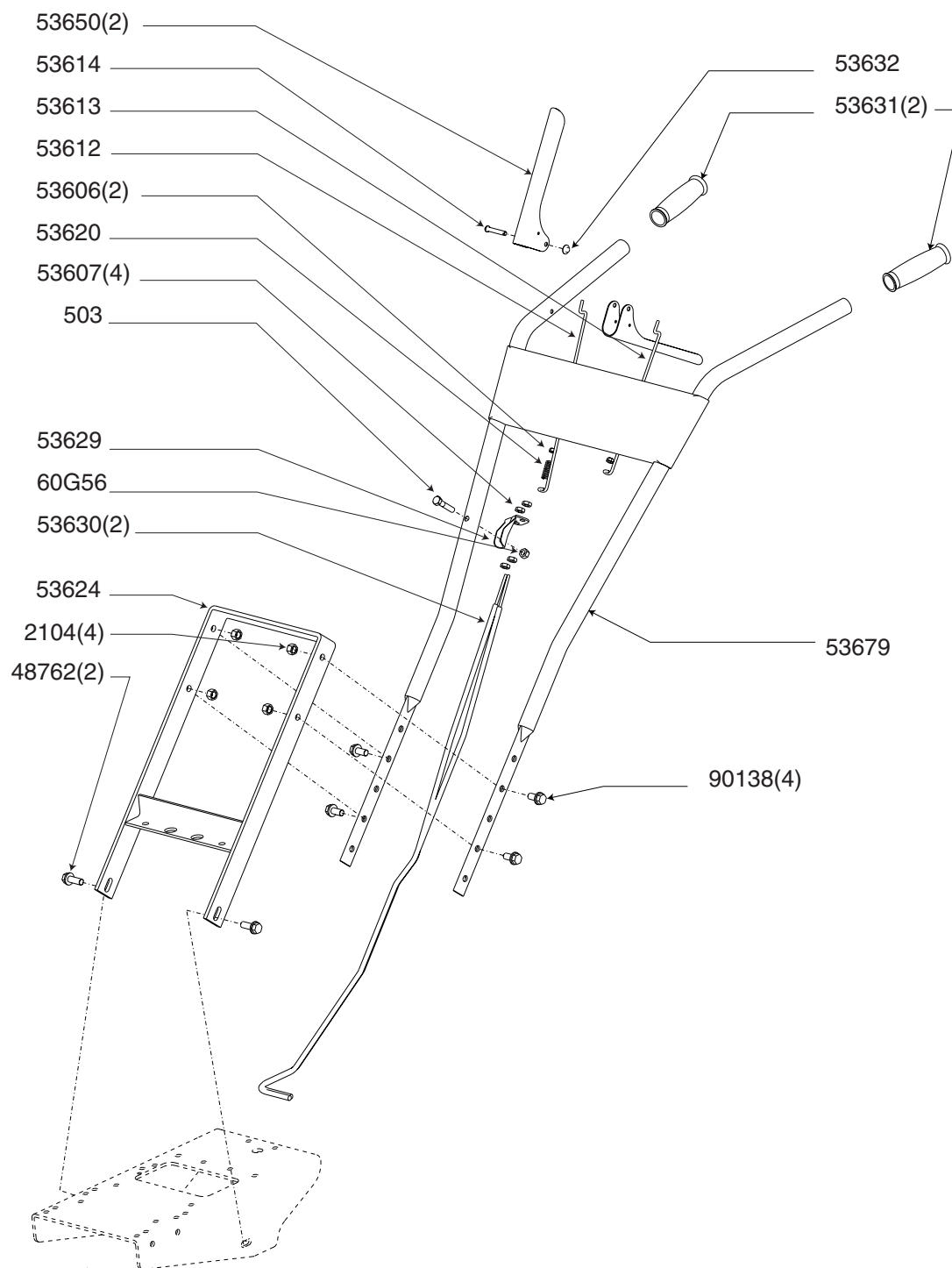


# TROUBLESHOOTING AND REPAIR

PROBLEM	REMEDY/ACTION
Belts squeal in neutral and/or reverse	<ul style="list-style-type: none"><li>• Adjust forward belt guide:<ul style="list-style-type: none"><li>- turn engine off and allow muffler to cool</li><li>- disconnect spark plug wire and secure from spark plug</li><li>- remove belt guard</li><li>- pull down on drive safety control levers</li><li>- manually bend forward belt guide so there is 1/16 inch or less clearance between belt guide and belt</li><li>- replace belt guard and spark plug wire</li></ul></li></ul>
Belts squeal in forward operation	<ul style="list-style-type: none"><li>• Adjust tabs on the reverse belt guide<ul style="list-style-type: none"><li>- turn engine off and allow muffler to cool</li><li>- disconnect spark plug wire and secure from spark plug</li><li>- release drive safety control levers to <b>neutral position</b></li><li>- remove belt guard</li><li>- adjust tabs of reverse belt guide:<ul style="list-style-type: none"><li>while drive safety control levers are released, bend metal tabs on reverse belt guide to 1/64 inch or less clearance from reverse belt</li></ul></li><li>- replace belt guard and spark plug wire</li></ul></li></ul>
Excessive heat build up in transmission/tine area during tilling	<ul style="list-style-type: none"><li>• Remove vegetation by following instructions in Clean Tine Axle Shaft of Normal Care section. FOLLOW ALL SAFETY INSTRUCTIONS</li><li>• Check transmission fluid and fill if needed</li></ul>



# SRT Handlebar Assembly





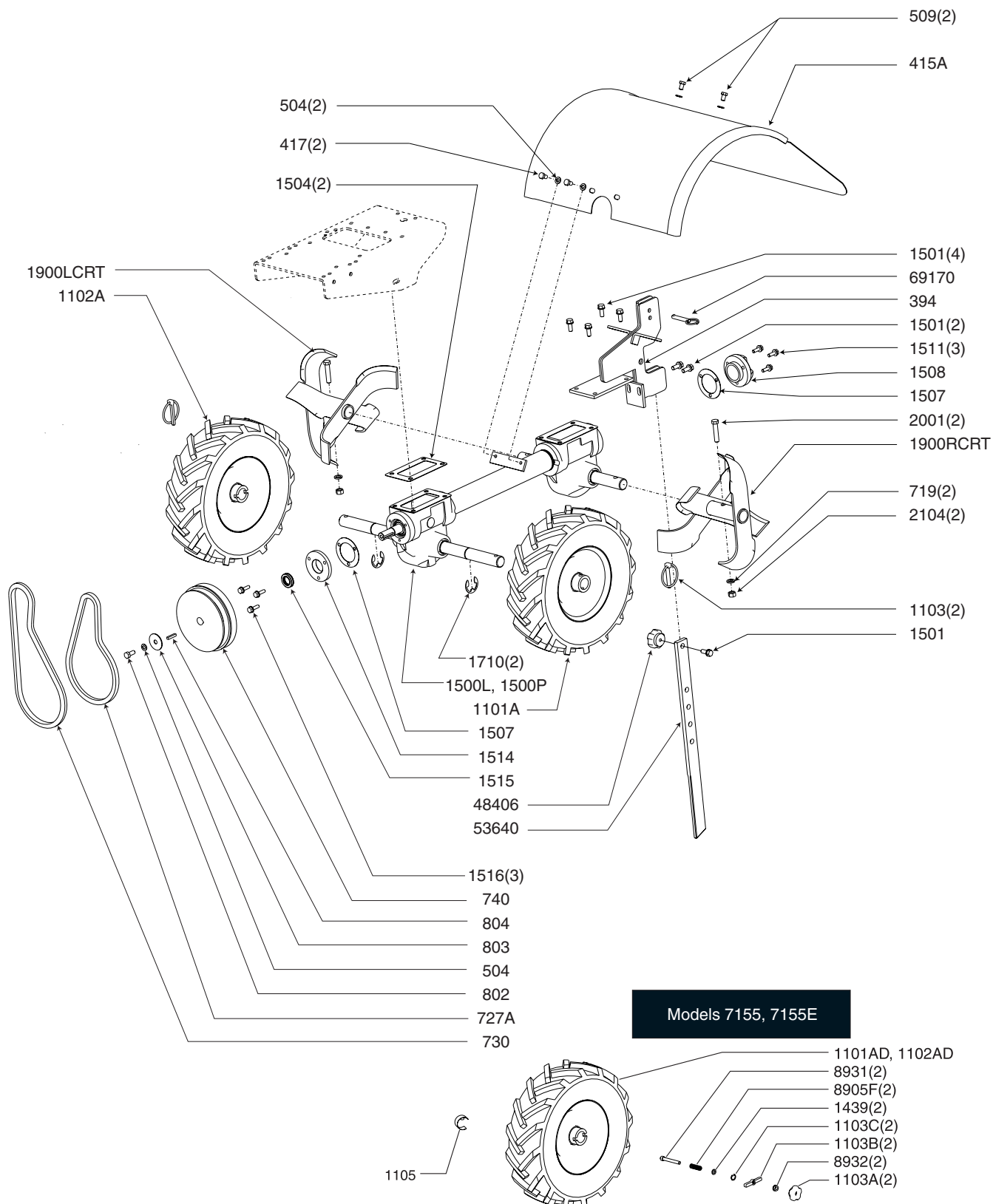


## SRT Handlebar Assembly

PART NUMBER	QUANTITY	DESCRIPTION
2104	4	Nut Hex Two-Way 3/8-16
48762	4	Bolt 3/8-16 x 1" Carriage
503	1	Bolt 5/16-24x1" HH GR5
53606	2	Nut-Nyloc, #10
53607	4	Nut-Jam, 5/16-24
53612	1	Link 11-5/8" long
53613	1	Link 9-1/2" long
53614	1	Pin Clevis 1/4 x 1-1/2"
53620	1	Spring Compression Forward Arm
53624	1	Handlebar Mount Weldment
53629	1	Cable Mount Bracket
53630	2	Cable - Rear Tine 39" Sheath
53631	2	Grip Handlebar 1" ID Flangless
53632	1	Nut Push 1/4"
53650	2	Lever Control Rear Tine
53679	1	Handlebar Weldment
60G56	1	Nut-Bi-Way Lock, 5/16-18
91038	4	Bolt 3/8-16 x 3/4 Ser Flange



# SRT Tines & Hood Assembly



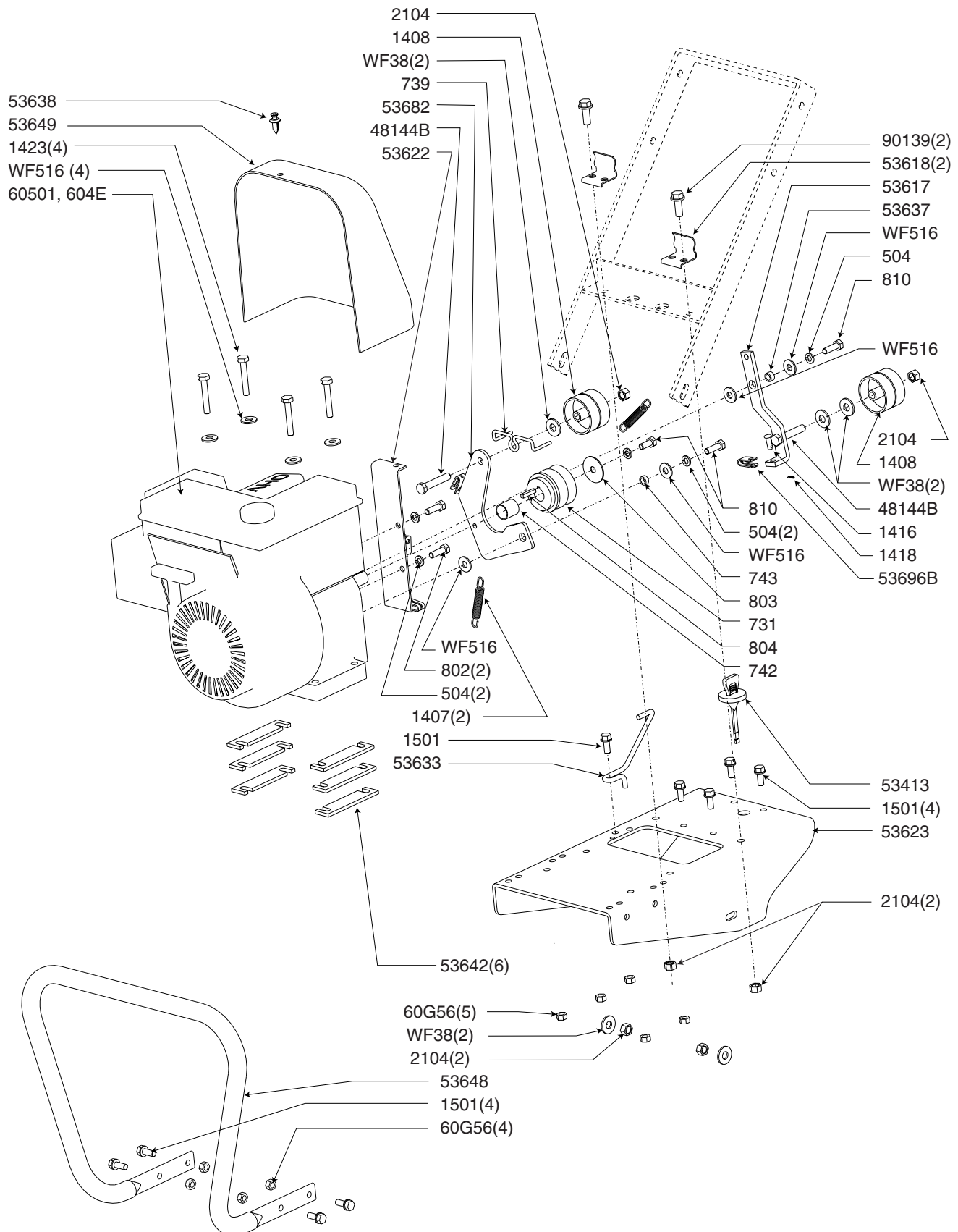


# SRT Tines & Hood Assembly

PART NUMBER	QUANTITY	DESCRIPTION
1101A	1	Left Wheel Assembly
1101AD	1	Left Wheel Assembly (7155, 7155E)
1102A	1	Right Wheel Assembly
1102AD	1	Right Wheel Assembly (7155, 7155E)
1103	2	Lock Pin 5/16" x 1-3/4"
1103A	2	Wheel Lockout Knob (7155, 7155E)
1103B	2	Butterfly Lockout (7155, 7155E)
1103C	2	Snap Ring 1/2" (7155, 7155E)
1105	2	Spring Clamp w/ Dowel (7155, 7155E)
1439	2	Flat Washer 1/4" ID (7155, 7155E)
1500P	1	Transmission Assembly, Lockpin
1500L	1	Transmission Assembly, Lockout (7155, 7155E)
1501	7	Bolt 5/16-18 x 3/4"
1504	2	Gasket, Transmission
1507	2	Gasket, Bearing Cap
1508	1	Rear Bearing Cap
1511	3	Bolt 1/4-20 x 7/8"
1514	1	Front End Cap
1515	1	Seal Oil Drive Shaft
1516	3	Bolt 1/4-20 x 3/4"
1710	2	External Snap Ring
1900LCRT	1	Left Tine Set
1900RCRT	4	Right Tine Set
2001	2	Bolt 3/8-16 x 1-3/4"
2104	2	Nut, Bi-Way Lock 3/8-16
394	1	Tail Mount Depth Regulator
415A	1	Hood Assembly
417	2	Bolt 5/16-18 x 1/2" HH GR5
48406	1	Black Knob 5/16-18
504	3	Lockwasher Spring 5/16"
509	2	Bolt 1/4-20 x 1/2"
53640	1	Drag Weldment
69170	1	Detent Pin 5/16 x 2" Zinc
719	2	Spring Washer 3/8"
727A	1	Forward Belt
730	1	Reverse Belt
740	1	Pulley, Two Groove Transmission
802	1	Bolt 5/16-24 x 3/4"
803	1	Washer 5/16" x 1-1/2"
804	1	Key 3/16" x 1"
8905F	2	Spring, Compression (7155, 7155E)
8931	2	Bolt 1/4-20 X 2" SHCS (7155, 7155E)
8932	2	Nut 1/4-20 (7155, 7155E)



# SRT Motor Mount Assembly



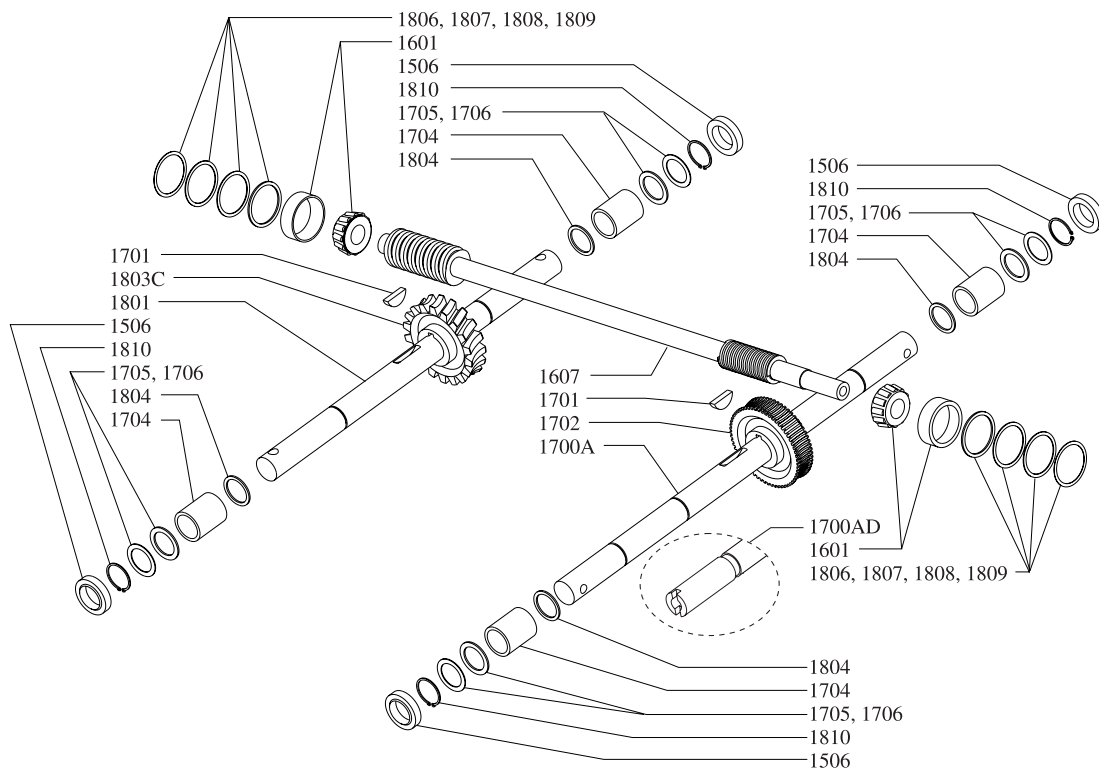


# SRT Motor Mount Assembly

PART NUMBER	QUANTITY	DESCRIPTION
1407	2	Forward Arm Spring
1408	2	Forward Pulley Idler
1416	1	Clevis Pin
1418	1	Cotter Pin 5/64" x 1/2"
1423	4	Bolt 5/16-18 x 2"
1501	9	Bolt 5/16-18 x 3/4"
2104	6	Nut 3/8-16
48144B	2	Bolt 3/8-16 x 2"
504	5	Lockwasher Spring 5/16"
53413	1	Dip Stick
53596B	1	Clevis Yoke Zinc Plated
53616	1	Engine Weight Block Spacer
53617	1	Forward Arm
53618	2	Belt Guard Clip
53622	1	Cable Pull Weldment
53623	1	Motor Mount
53633	1	Belt Guide
53637	1	Forward Arm Bushing
53638	1	Plastic Push-in Rivet
53648	1	Bumper Guard (7155, 7155E)
53649	1	Belt Guard
53682	1	Reverse Tine Weldment
604E	1	Engine, 6.5 hp Briggs & Stratton Intek Electric Start (7055E, 7155E)
60501	1	Engine, 6 hp Briggs & Stratton
60G56	9	Nut Bi-Way Lock 5/16-18
731	1	Two Groove Pulley 3/4"
739	1	Reverse Belt Guide
742	1	Drive Pulley Spacer
743	1	Reverse Arm Bushing
802	2	Bolt 5/16-24 x 3/4"
803	1	Washer 5/16" x 1-1/2"
804	1	Key 3/16" x 1"
810	3	Bolt 5/16-24 x 1"
90139	2	Bolt 3/8-16 x 1"
WF38	6	Flat Washer 3/8"
WF516	8	Flat Washer 5/16"



# SRT Wheel & Tiller Shaft Assembly



PART NUMBER	QUANTITY	DESCRIPTION
1506	4	Seal-Tiller Housing
1601	2	Bearing-Tapered (Includes Cone & Race)
1607	1	Main Drive Shaft, 23"
1700A	1	Wheel Shaft Assembly, Lockpin
1700AD	1	Wheel Shaft Assembly, Lockout (7155, 7155E)
1701	2	Key 1/4" x 1"
1702	1	Gear-Worm, Brass, 61 Tooth, Wheel Shaft
1703	4	Shim Set-Axle Spacer Kit
1704	4	Bushing
1705	4	Shim, 1.375 OD x .062" thick, (as required.)
1706	2	Shim, 1.375 OD x .030" thick, (as required.)
1801	1	Tine Shaft
1803	1	Gear-Worm, Brass, 30 Tooth, Tiller Shaft
1804	4	Spacer, 1.250" x 1.000" x .062" thick
1805	2	Shim Set-Bearing Cap
1806	6	Shim, 1.750 OD x .062" thick, (as required.)
1807	2	Shim, 1.750 OD x .030" thick, (as required.)
1808	2	Shim, 1.750 OD x .015" thick, (as required.)
1809	2	Shim, 1.750 OD x .010" thick, (as required.)
1810	4	Snap Ring-Retainer, Internal
494	1	Casting, Tiller Transmission



# Hiller/Furrower Assembly (Optional Accessory)\*

## HOW TO ASSEMBLE AND ATTACH YOUR HILLER/FURROWER

Thank you for purchasing a hiller/furrower attachment for your rototiller. We know that you will be pleased with the many worksaving uses you can accomplish with this handy tool.

To assemble, attach furrower to bracket and then wings to furrower using hardware pictured below. Follow diagram below for placement of parts. Adjust left and right wing carriage bolts in slots to get correct leveling of hills.

The furrower attaches to your tiller in just one easy step. Remove the hex bolt and nut inserted through the bracket and align with hole in drag stake holder just behind the drag stake under the hood. Insert hex bolt and nut and tighten securely.

### Parts Bag Hardware

 Hex Bolt (1)

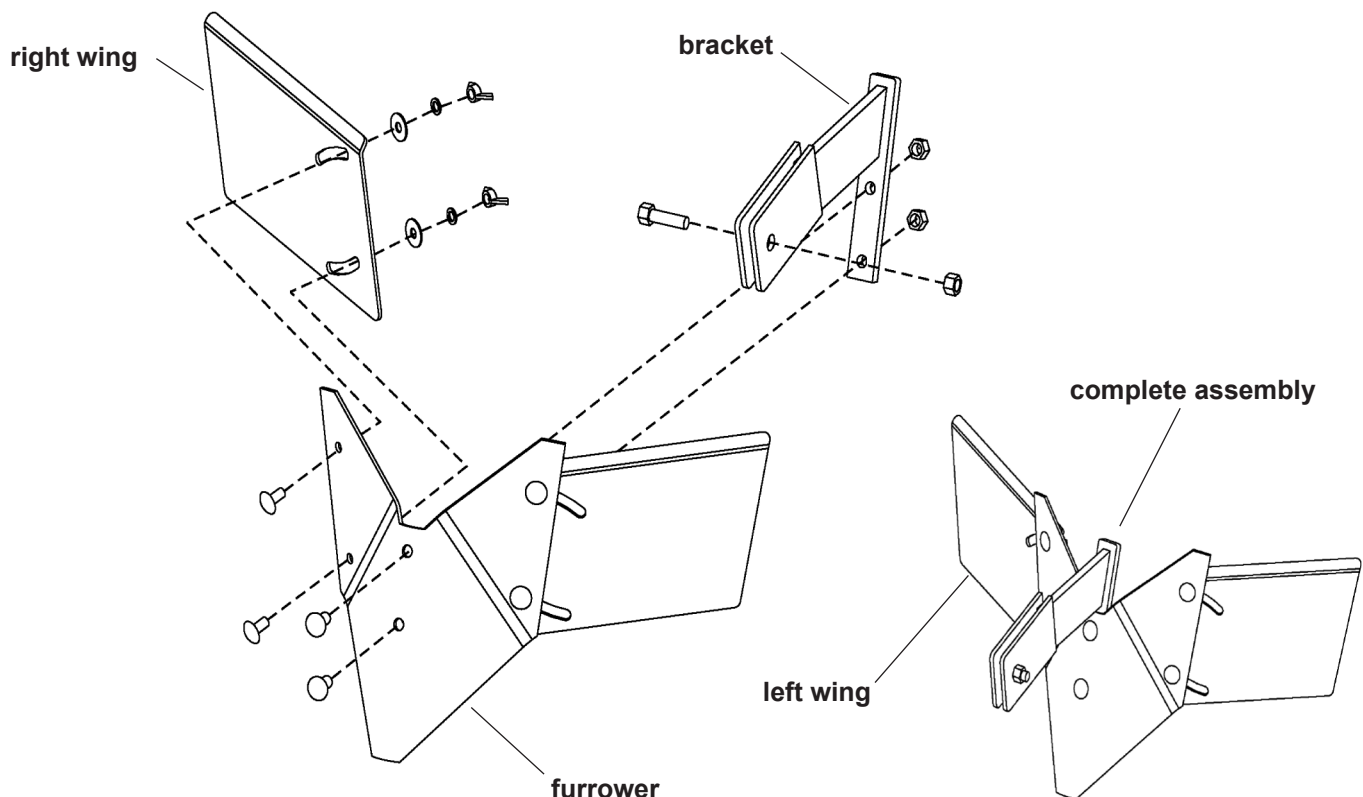
 Lockwasher (4)

 Carriage Bolt (6)

 Nut (3)

 Flatwasher (4)

 Wing Nut (4)



\* Standard feature on Model 7155

**Earthquake<sup>®</sup>**

**Ardisam, Inc.**  
**1690 Elm Street, Cumberland, Wisconsin 54829**  
**(715)822-2415 • Fax (715)822-4180**

**800-345-6007**

**WWW.ARDISAM.COM**