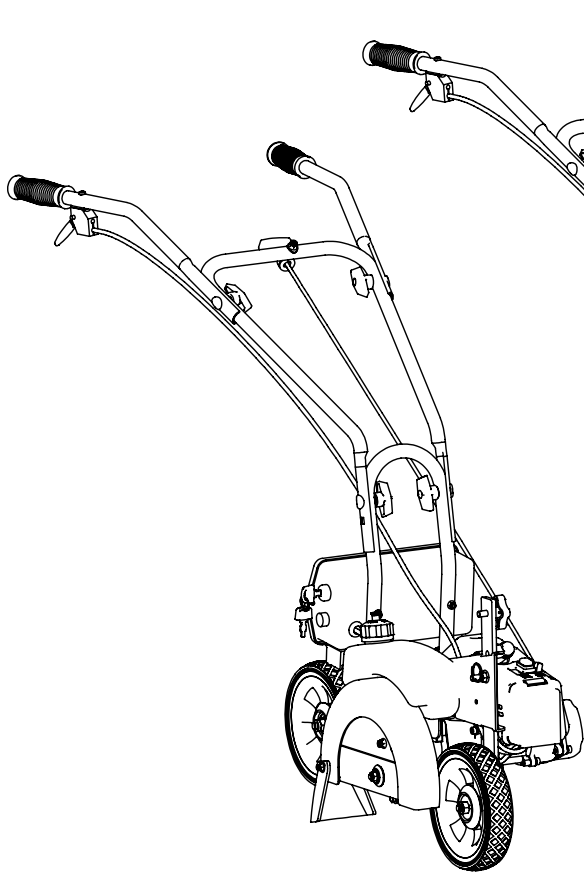
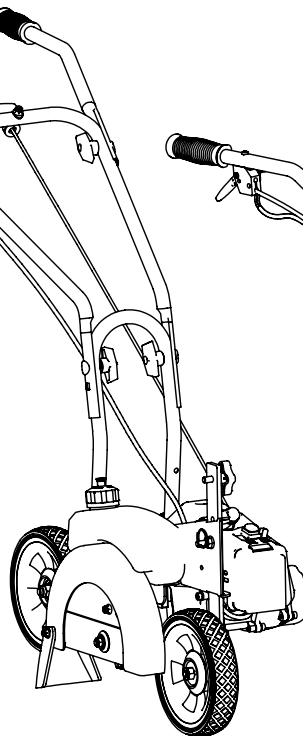


Earthquake®

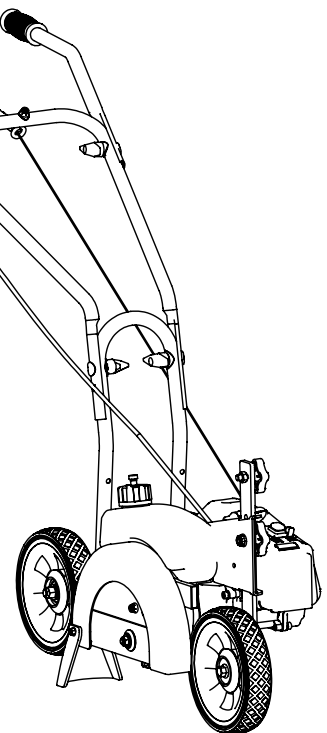
Operator's Manual
Original Operating Instructions
**Walk-Behind Edger
WE43 Series**



WE43E
(electric start)



WE43
(manual start)



WE43CE
(European, manual start)

Includes models:

WE43
WE43E
WE43CE



INTRODUCTION

Congratulations on your investment in quality. Thank you for purchasing a walk-behind edger from Earthquake®. We have worked to ensure that the edger meets the highest standards for usability and durability. With proper care, your edger will provide many years of service.

Please read this entire manual before installation and use. Earthquake® reserves the right to change, alter or improve the product and this document at any time without prior notice.

CONTENTS

Introduction 2

Warnings and Safety Precautions..... 3-8

Specifications..... 8

Assembly 9

Operation 10-12

Maintenance and Storage 13-14

Troubleshooting and Repair..... 15-16

Parts Breakdown..... 17-22

CE Declaration of Conformity 23

Warranty 24-25

FEDERAL EMISSION INFORMATION

Earthquake® warrants to the retail purchaser, that this small, off-road engine was designed, built and equipped to conform at the time of initial sale to all applicable regulations of the U.S. Environmental Protection Agency (EPA).

REGISTRATION, SERVICE AND MAINTENANCE LOG

Record the model number and serial number in the space provided for easy reference. Warranty is valid only if the completed registration is received by Earthquake® within 30 days of purchase. You can register your warranty online by visiting www.getearthquake.com. If you do not have a computer, call our customer service department at (800) 345-6007 Mondays through Fridays from 8 a.m. to 5 p.m. CST.

OWNERSHIP RECORDS		
Owner's Name:		
Owner's Address:		
City:	State/Province:	Zip Code/Postal Code:
Model Number:	Serial Number:	
Date of Purchase:		
Notes:		

This manual may contain information for several models. Read and keep this manual for future reference. This manual contains important information on SAFETY, ASSEMBLY, OPERATION, AND MAINTENANCE. The owner must be certain that all the product information is included with the unit. This information includes the MANUAL, the REPLACEMENT PARTS and the WARRANTIES. This information must be included to make sure state laws and other laws are followed. This manual should remain with the engine even if it is resold.

WARNINGS AND SAFETY PRECAUTIONS

OPERATOR'S RESPONSIBILITY

Accurate assembly and safe and effective use of the machine is the operator's responsibility.

- Read and follow all safety instructions.
- Carefully follow all assembly instructions.
- Maintain the machine according to directions and schedule included in this Earthquake® operator's manual.
- Ensure that anyone who uses the machine is familiar with all controls and safety precautions.

SPECIAL MESSAGES

Your manual contains special messages to bring attention to potential safety concerns, machine damage as well as helpful operating and servicing information. Please read all the information carefully to avoid injury and machine damage.

NOTE: General information is given throughout the manual that may help the operator in the operation or service of the machine.



This symbol points out important safety instructions which if not followed could endanger your personal safety.

BEFORE OPERATING ENGINE:



WARNING

READ ENTIRE OPERATING AND MAINTENANCE INSTRUCTIONS FOR THIS PRODUCT. FAILURE TO FOLLOW INSTRUCTIONS COULD RESULT IN SERIOUS INJURY OR DEATH. OPERATE THE ENGINE ACCORDING TO THE SAFETY INSTRUCTIONS OUTLINED HERE AND INSERTED THROUGHOUT THE TEXT. ANYONE WHO USES THIS PRODUCT MUST READ THE INSTRUCTIONS AND BE FAMILIAR WITH THE CONTROLS.



WARNING

WARNING INDICATES A HAZARD WHICH, IF NOT AVOIDED, COULD RESULT IN DEATH OR SERIOUS INJURY AND/OR PROPERTY DAMAGE.



CAUTION

CAUTION INDICATES YOU CAN BE HURT OR YOUR EQUIPMENT DAMAGED IF THE SAFETY INSTRUCTIONS THAT FOLLOW THIS SIGNAL WORD ARE NOT OBEYED.



IMPORTANT

INDICATES HELPFUL INFORMATION FOR PROPER ASSEMBLY, OPERATION, OR MAINTENANCE OF YOUR EQUIPMENT.



WARNING

CALIFORNIA PROPOSITION 65 WARNING

ENGINE EXHAUST FROM THIS PRODUCT CONTAINS CHEMICALS KNOWN TO THE STATE OF CALIFORNIA TO CAUSE CANCER, BIRTH DEFECTS, OR OTHER REPRODUCTIVE HARM.



WARNING

YOU MUST READ, UNDERSTAND AND COMPLY WITH ALL SAFETY AND OPERATING INSTRUCTIONS IN THIS MANUAL BEFORE ATTEMPTING TO SETUP AND OPERATE YOUR MACHINE.

FAILURE TO COMPLY WITH ALL SAFETY AND OPERATING INSTRUCTIONS CAN RESULT IN LOSS OF MACHINE CONTROL, SERIOUS PERSONAL INJURY TO YOU AND/OR BYSTANDERS, AND RISK OF EQUIPMENT AND PROPERTY DAMAGE. THE TRIANGLE IN THE TEXT SIGNIFIES IMPORTANT CAUTIONS OR WARNINGS WHICH MUST BE FOLLOWED.



Intended Use / Foreseeable Misuse

This is a motorized, walk-behind edger used for maintaining and trimming unwanted weeds and grass from areas next to concrete or other landscaping items. It is pedestrian controlled. It has a petrol-fuelled internal combustion engine that powers the cutting wheel. It shall not be used for any other purpose.

GENERAL SAFETY RULES

- Read, understand, and follow all instructions on the machine and in the manual(s). Be thoroughly familiar with the controls and the proper use of the machine before starting.
- Use this equipment for its intended purpose only.
- Familiarize yourself with all of the safety and operating decals on this equipment and on any of its attachments or accessories.
- Do not put hands or feet near or under rotating parts.
- Only allow responsible individuals who are familiar with the instructions to operate the machine. Do not allow children to operate this machine. Do not allow adults to operate the machine without proper instruction.
- Thoroughly inspect the area where the machine is to be used and remove all foreign objects. Your equipment can propel small objects at high speed causing personal injury or property damage. Stay away from breakable objects, such as house windows, automobile, greenhouses, etc.
- Wear appropriate clothing such as a long-sleeved shirt or jacket. Also wear long trousers or slacks. Do not wear shorts. Never wear sandals, sneakers, or open shoes, and never operate the machine with bare feet.
- Do not wear loose clothing or jewelry. They can get caught in moving parts. Always keep hands, feet, hair and loose clothing away from any moving parts on engine and machine.
- Always wear safety goggles or safety glasses with side shields when operating the machine to protect your eyes from foreign objects which can be thrown from the unit. Always wear a protective hearing device.
- Always wear work gloves and machine safety shoes during operation. Wear footwear that will improve footing on slippery surfaces. Leather work shoes or short boots work well for most people. These will protect the operator's ankles and shins from small sticks, splinters, and other debris.
- It is advisable to wear protective headgear to prevent the possibility of being struck by small flying particles, or being struck by low hanging branches, twigs, or other objects which may be unnoticed by the operator.
- Do not operate the machine without proper guards or other safety protective devices in place.
- See manufacturer's instructions for proper operation and installation of accessories. Only use accessories approved by the manufacturer.
- Operate only in daylight or good artificial light.
- Do not operate product when fatigued or under the influence of alcohol, drugs or other medication which can cause drowsiness or affect your ability to operate this machine safely.
- Never operate machine in wet grass. Always be sure of your footing; keep a firm hold on the handle and walk; never run.
- Watch for traffic whenever you are operating near, or when crossing roads.
- If the equipment should start to vibrate abnormally, stop the engine (motor), disconnect the spark plug wire and prevent it from touching the spark plug. Check immediately for cause. Vibration is generally a warning of trouble. If the noise or vibrations of the machine increase, stop immediately and perform an inspection.
- Never leave the machine unattended when the engine is running.
- Regularly inspect the machine. Make sure parts are not bent, damaged or loose.
- Temperature of muffler and nearby areas may exceed 150° F (65° C). Allow muffler and engine areas to cool before touching. Never pick up or carry the machine while the engine is running.
- Prolonged exposure to noise and vibration from gasoline engine-powered equipment should be avoided. Take intermittent breaks and/or wear ear protection from engine noise as well as heavy work gloves to reduce vibration in the hands.
- Keep all screws, nuts and bolts tight.
- Do not transport the machine from one place to another with the engine running.
- When moving the packaged machine, always do so with a partner.
- Check local regulations for age restrictions on use of this machine.

PRODUCT-SPECIFIC SAFETY RULES

- Do not edge above underground utilities, including water lines, gas lines, electric cables, or pipes. Do not operate the machine on terrain/soil with large rocks and foreign objects which can damage the equipment.
- After striking a foreign object, stop the engine. Remove the wire from the spark plug. Inspect the machine for damage. If damaged, repair before starting and operating the machine.
- The blade of the edger should not rotate when the engine is idling. If it does rotate when engine is idling, contact Earthquake® for instructions.
- If an object becomes lodged in the blade guard area, turn engine off, remove the wire from the spark plug and secure, allow to cool before attempting to remove the foreign object.
- When the unit starts to fire or run, release the throttle control momentarily with your right hand and return your left hand to the handlebar position to maintain control and stability of the unit with both hands.
- Use edger only for edging along flower beds, terraces, sidewalks and curbs. Trim along buildings trees, walks, marker hedges and fences.

ENGINE SAFETY PRECAUTIONS

Warning Carbon Monoxide Poisoning

Engines give off carbon monoxide, an odorless, colorless, poisonous gas. Carbon monoxide may be present even if you do not smell or see any engine exhaust. Breathing carbon monoxide can cause nausea, fainting or death, in addition to drowsiness, dizziness and confusion. If you experience any of these symptoms, seek fresh air and medical attention immediately.

If your product comes with a separate engine manual, be sure to read and follow all safety and warning precautions outlined there, in addition to any in this manual.

Preventing Carbon Monoxide Poisoning

- Always start and run engine outdoors. Do not start or run engine in an enclosed area, even if doors or windows are open.
- Never try to ventilate engine exhaust indoors. Carbon monoxide can reach dangerous levels very quickly.
- Never run engine outdoors where exhaust fumes may be pulled into a building.
- Never run engine outdoors in a poorly ventilated area where the exhaust fumes may be trapped and not easily taken away. (Examples include: in a large hole or areas where hills surround your working area.)
- Never run engine in an enclosed or partially enclosed area. (Examples include: buildings that are enclosed on one or more sides, under tents, car ports or basements.)
- Always run the engine with the exhaust and muffler pointed in the direction away from the operator.
- Always keep the throttle in the "slow" position when not in use.
- Never point the exhaust muffler towards anyone. People should always be many feet away from the operation of the engine and its attachments.
- Do not change the engine governor settings or over-speed the engine.

Gasoline Fires and Handling Fuel Safely

Use extra care in handling gasoline and other fuels. They are flammable and vapors are explosive.

- When storing extra fuel be sure that it is in an appropriate container and away from any fire hazards.
- Prevent fire and explosion caused by static electric discharge. Use only nonmetal, portable fuel containers approved by the Underwriter's Laboratory (U.L.) or the American Society for Testing & Materials (ASTM).
- Always fill fuel tank outside in a well ventilated area. Never fill your fuel tank with fuel indoors. (Examples include: basement, garage, barn, shed, house, porch, etc.) Never fill tank near appliances with pilot lights, heaters, or other ignition sources. If the fuel has to be drained, this should



WARNING

ENGINES GIVE OFF CARBON MONOXIDE, AN ODORLESS, COLORLESS, POISONOUS GAS. CARBON MONOXIDE MAY BE PRESENT EVEN IF YOU DO NOT SMELL OR SEE ANY ENGINE EXHAUST. BREATHING CARBON MONOXIDE CAN CAUSE NAUSEA, FAINTING OR DEATH, IN ADDITION TO DROWSINESS, DIZZINESS AND CONFUSION.

IF YOU EXPERIENCE ANY OF THESE SYMPTOMS, SEEK FRESH AIR AND MEDICAL ATTENTION IMMEDIATELY.



CAUTION

HOT GASES ARE A NORMAL BY-PRODUCT OF A FUNCTIONING CATALYTIC CONVERTER. FOLLOW ALL SAFETY INSTRUCTIONS TO PREVENT BURNS AND FIRES.

DO NOT ALTER/MODIFY ENGINE:

NEVER ALTER OR MODIFY THE ENGINE FROM THE FACTORY. SERIOUS INJURY OR DEATH MAY OCCUR IF ENGINE IS MODIFIED OR ALTERED.

WHEN WORKING ON OR REPLACING PARTS FOR THE ENGINE OR PRODUCT, YOU MUST ALWAYS DISCONNECT SPARK PLUG WIRE FROM THE SPARK PLUG AND KEEP IT AWAY FROM THE SPARK PLUG.

be done outdoors. The drained fuel should be stored in a container specifically designed for fuel storage or it should be disposed of carefully.

- Never remove the fuel cap or add fuel with the engine running. Stop engine and allow to cool before filling.
- Do not smoke while handling fuel or operating edger.
- Never drain fuel from engine in an enclosed area.
- Always wipe up excess (spilled) fuel from engine before starting. Clean up spilled fuel immediately. If fuel is spilled, do not start the engine but move product and fuel container from area. Clean up spilled fuel and allow to evaporate and dry after wiping and before starting.
- Allow fuel fumes/vapors to escape from the area before starting engine.
- Test the fuel cap for proper installation before starting and using engine.
- Always run the engine with fuel cap properly installed on the engine.
- Always unscrew fuel cap vent screw while engine is running.
- Do not store engine with fuel in fuel tank indoors. Fuel and fuel vapors are highly explosive.

- During storage, screw down fuel cap vent screw tightly.
- Never pour fuel from engine fuel tank.
- Never siphon fuel by mouth to drain fuel tank.
- Filling the fuel tank must be done by adults only. Never allow children to refuel the engine.
- Never allow an adult or anyone under the influence of drugs or alcohol to fill engine.
- When storing gasoline or equipment with fuel in the tank, store away from furnaces, stoves, water heaters or other appliances that have a pilot light or other ignition source because they can ignite gasoline vapors.

BURNS AND FIRES

The muffler, muffler guard and other parts of the engine become extremely hot during the operation of the engine. These parts remain extremely hot after the engine has stopped.

Prevention of Burns and Fires

- Never remove the muffler guard from the engine.
- Never touch the muffler guard because it is extremely hot and will cause severe burns.
- Never touch parts of the engine that become hot after operation.
- Always keep materials and debris away from muffler guard and other hot parts of the engine to avoid fires.
- This engine is designed to operate using a catalytic converter which contributes to the engine's compliance with the EPA.

CHILDREN AND BYSTANDERS

Tragic accidents can occur if the operator is not alert to the presence of children and/or bystanders. Never assume that others will remain where you last saw them.

- Keep the area of operation clear of all persons, especially small children and pets. Keep children under the watchful care of a responsible adult.
- Be alert and turn machine off if children enter the area.
- Before and while moving backwards, look behind and down for small children.
- Never allow children to operate the machine.
- Use extra care when approaching blind corners, shrubs, trees, or other objects that may obscure vision.

SERVICE

- Always stop the engine whenever you leave the equipment, before cleaning, repairing or inspecting the unit. Engine should be turned off and cool, spark plug wire must be removed from spark plug before any repairs or adjustments are attempted. Never make adjustments or repairs with the engine (motor) running. Disconnect the spark plug wire, and keep the wire away from the plug to prevent accidental starting. Remove the ignition key if equipped with an electric start.
- Always wear eye protection when you make adjustments or repairs.
- Keep all nuts and bolts tight and keep equipment in good condition.
- Never tamper with safety devices. Check their proper operation regularly.
- When servicing or repairing the machine, do not tip the machine over or up unless specifically instructed to do so in this manual. Service and repair procedures can be done with the machine in an upright position. Some procedures will be easier if the machine is lifted on a raised platform or working surface.
- To reduce fire hazard, keep machine free of grass, leaves, or other debris build-up. Clean up oil or fuel spillage. Allow machine to cool before storing.
- Stop and inspect the equipment if you strike an object. Repair, if necessary, before restarting.
- Clean and replace safety and instruction decals as necessary.
- To guard against engine over-heating, always have engine debris filter mounted and clean.
- Inspect machine before storage. When not in use, disconnect spark plug lead and store indoors in a dry place locked or otherwise inaccessible to children.
- Use only original equipment parts from Earthquake®, including all nuts and bolts.

SAFETY SYMBOLS AND DECALS

This edger has been designed and manufactured to provide you with the safety and reliability you would expect from an industry leader in outdoor power equipment manufacturing.

Reading this manual and the safety instructions it contains will provide you with the necessary basic knowledge to operate this equipment safely and effectively. We have placed safety decals on the edger to remind you of some of this important information while you are operating the unit. These important safety decals are illustrated below, and are shown here to help familiarize you with the location and content of the safety messages you will see as you perform normal edging operations. Please review these decals now, and if you have any questions regarding its meaning or how to comply with these instructions, reread the complete safety instruction text in this manual, or contact your local dealer.

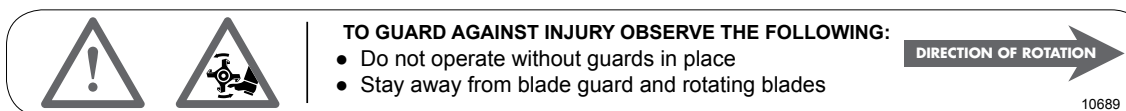
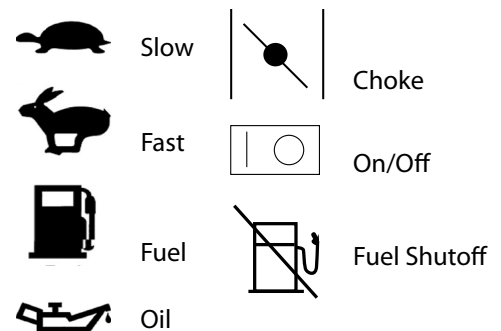
Should these decals become unreadable because of being worn, faded, or otherwise damaged during the use of your edger, please use the part number information provided to order a replacement label from your local authorized dealer. These decals are easily applied, and will act as a constant visual reminder to you, and others who may use the equipment, to follow the safety instructions necessary for safe, effective operation of your edger.

The following symbols and decals may be used on your engine to alert you to potential hazards or to give you guidance in operating your edger. Look over them and understand their meanings before operating your edger.

Safety or Hazard Symbols



Operational Control Symbols



Part No. 10689
BLADE SAFETY
PRECAUTION DECAL
Warning: Moving Parts
Do not operate without
guards in place



Part No. 10686
SAFETY PRECAUTIONS DECAL
1) Wear eye and hearing protection
2) Read entire manual before operating product
3) Watch for bystanders
4) Blades rotate clockwise when edger is in use. **NOTE: When throttle is released, blades stop**

CE ADDITIONAL SAFETY DECALS (CE MODELS ONLY)

ARDISAM, INC.

1160 8th Avenue | Cumberland, WI 54829 | USA

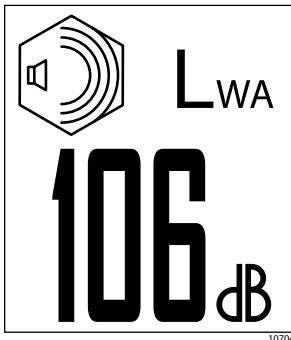


Serial No.

10684

Model: **WE43CE** Type: **Edger**
Year: **2012** Mass: **12.9 kg**
Max. Operating Speed: **1700 RPM**
 L_{PA} (dBA): **91** L_{WA} (dBA): **106**

Part No. 10684
SERIAL NUMBER LOCATION DECAL



Part No. 10704
NOISE LEVEL DECAL

SPECIFICATIONS

ENGINE DISPLACEMENT	43cc
FUEL TANK CAPACITY	30 ounces
OIL/GAS RATIO	50:1 - 2.6 ounces per gallon
OIL TYPE	Viper® Two-Cycle Engine Oil (P/N 300400)
FUEL TYPE	Unleaded regular gas with stabilizer
SPARK PLUG	BM6A (WE43/WE43CE) L7RTC (WE43CE)
SPARK PLUG GAP	.028
CUTTING DEPTH	2.75 inch maximum
WHEEL SIZE	1.375 x 7.0 inch diameter
BLADE SIZE	2 x 9 x .125 inch thick
WEIGHT OF UNIT	WE43E = 38 lb / WE43 = 27 lb WE43CE = 28.5 lb
UNIT SIZE L x W x H (inches)	21 x 14 x 23



Model	Operator Ear L_{PA} (dBA)	Sound Power Level L_{WA} (dBA)	Hand/Arm Vibration Max m/s^2
WE43CE	91	106	11.8

ASSEMBLY

UNPACKING

1. Set aside the operator's manual and parts bag. Carefully lift the edger out of the box, remove any packing material and cut any ties holding the handlebar pieces to the edger assembly.

ASSEMBLY INSTRUCTIONS

1. Stand the edger assembly upright with wheels on a level surface. **DO NOT place the edger on a high surface where it can fall and cause property damage or personal injury.**
2. Unscrew knob from height adjustment bar. Slide height adjuster bar through slots in wheel mount bracket with wheel placed towards edger blade guard. Place knob with bolt through hole at top of height adjuster bar from engine side and secure with nut. Adjust the height of the unit and place detent pin (or knob with threaded stud) through matching holes in height adjuster bar and wheel mount bracket. Refer to photos in the "Parts Breakdown" section for proper placement.
3. Using two tee handle nuts (4640), two bolts (4642), and two curved washers (4641), assemble the middle handlebar (4693) to the handlebar and wheel mount weldment (400008) that is already attached to the edger assembly. The middle handlebar can be installed in two positions one high and one low. **DO NOT overtighten the tee handle nuts.**
4. Attach the upper right and left handlebars (4689 and 4690) to the middle handlebar using the two remaining tee handle nuts, bolts, and curved washers. **DO NOT overtighten the tee handle nuts.**
5. Secure cable to handlebar with provided cable tie.

For the Electric Start Edger Model WE43E, remove the battery box cover and plug the white plastic connector from the battery into the mating white plastic connector in the battery box. **See Figure 1. Make sure the ignition key is removed from the ignition before connecting the wiring for the battery.**



Figure 1

WARNING

AVOID ELECTRICAL SHOCK! DO NOT USE BATTERY CHARGER AROUND WATER OR IN WET CONDITIONS.

CAUTION

BATTERIES MUST BE REMOVED FROM MACHINE AND STORED IN A WARM LOCATION WHEN AMBIENT TEMPERATURE FALLS BELOW FREEZING.

IMPORTANT

DO NOT SPRAY WATER ON OR NEAR THE ELECTRONICS OF THE EDGER AS THIS MAY RESULT IN DAMAGE TO THE ELECTRICAL COMPONENTS.

DO NOT TRY TO START ENGINE WHILE THE BATTERY CHARGER IS CONNECTED. THIS COULD DAMAGE THE ENGINE AND BATTERY.

FOR MODEL WE43E ELECTRIC START

CHARGING THE BATTERY

To charge the battery, check that the battery wiring is properly connected and plug the battery charger (4681) into the side of the battery box (4656) with matching three-prong plug. Plug the other end of the battery charger into a standard 120V outlet receptacle. Battery is fully charged when the LED light turns GREEN on the external charger. The electric start edger (WE43E) will maintain a charge in the battery when the engine is running.

Batteries may take as long as 8 hours to fully charge depending on the original charge level of the battery.

NOTE: For long-term storage protection, be sure that the battery is fully charged and the white plastic battery connector is disconnected. Place the battery box cover onto the battery box and store in a dry place out of direct sunlight.

NOTE: Rechargeable batteries have a limited number of charge cycles and may eventually need to be replaced. Battery life and number of charge cycles vary by use. If you are questioning whether your charger is functioning properly, test the charger by measuring the voltage using a multi-meter. The voltage across the pins should be 12-14 volts when the charger is plugged into a wall socket.

OPERATION

PREPARING ENGINE FOR STARTING

Before starting your edger, make sure the black throttle cable housing is seated all the way into the brass ferrule at the engine side of the cable.

GAS AND OIL QUALITY

To operate the engine, we recommend using Viper® brand two-cycle oil (P/N 300400) to ensure that the engine operates correctly throughout the life of the engine. Use unleaded regular gas only.

NOTE: *Viper® oil can be purchased from our web site at www.getearthquake.com.*

MIXTURE

Run engine with a 50:1 ratio.

GAS	OIL	RATIO
1 gallon	2.6 ounces	50:1
2 gallons	5.1 ounces	50:1
5 gallons	13 ounces	50:1

MIXING FUEL AND FILLING FUEL TANK

MIXING FUEL

1. Fuel must be mixed in a container outside in a well-ventilated area.
2. Fill certified fuel container 1/4 full of recommended fuel. Use unleaded regular gas only. It is best to use premium gasoline that has no ethanol content.
3. Add recommended amount of two-cycle oil. Earthquake® also suggests the use of a fuel stabilizer/additive to prevent gasoline from oxidizing and gumming up the carburetor.
4. Screw container cap on straight and tight.
5. Shake the container to mix fuel and oil.
6. Unscrew fuel cap slowly to vent; add the remainder of fuel requirements.
7. Wipe away any spilled fuel or oil and allow to evaporate before moving or transporting.

CAUTION

NEVER STORE ENGINE WITH FUEL IN THE TANK INDOORS. FUEL AND FUEL VAPORS ARE HIGHLY FLAMMABLE.

NEVER MIX FUEL AND OIL DIRECTLY IN ENGINE FUEL TANK. USE ONLY NONMETAL, PORTABLE FUEL CONTAINERS APPROVED BY THE UNDERWRITER'S LABORATORY (U.L.) OR THE AMERICAN SOCIETY FOR TESTING & MATERIALS (ASTM).

ONLY AN ADULT SHOULD HANDLE AND FILL THE ENGINE WITH FUEL.

ALWAYS HANDLE GAS IN A WELL VENTILATED AREA, OUTDOORS, AWAY FROM FLAMES OR SPARKS.

DO NOT START ENGINE IF FUEL IS SPILLED. WIPE OFF EXCESS FUEL AND ALLOW TO DRY. REMOVE ENGINE FROM AREA TO AVOID SPARKS.

IMPORTANT

THIS ENGINE USES A GAS/OIL MIXTURE. DO NOT RUN ON STRAIGHT GAS ONLY, ENGINE DAMAGE WILL RESULT.

DO NOT START ENGINE WITH BATTERY CHARGER CONNECTED TO BATTERY. THIS COULD CAUSE DAMAGE TO THE EDGER.

FILLING FUEL TANK

1. Shut-off engine and allow engine to completely cool before refilling the fuel tank.
2. Move to a well-ventilated area, outdoors, away from flames and sparks.
3. Clean debris from area around the fuel cap.
4. Loosen fuel cap slowly. Place the cap on a clean, dry surface.
5. Carefully add fuel without spilling.
6. Do not fill fuel tank completely full; allow space for fuel to expand.
7. Immediately replace fuel cap and tighten. Wipe off spilled fuel and allow to dry before starting engine.

OPERATION TIPS

1. The clutch will transfer maximum power after about two hours of normal operation. During this break-in period clutch slippage may occur. The clutch should be kept free of oil and other moisture for efficient operation.
2. Edge without placing excessive body weight on the unit. The edger operates most efficiently with the weight of the unit itself.
3. Never run engine indoors. Exhaust fumes are deadly.

USING THE SCREW TYPE, MANUAL VENTING FUEL CAP

Your edger is equipped with a screw type, manual venting fuel cap.

1. Before starting the engine, turn the screw in the top of the fuel cap 2-3 turns (counterclockwise) to its venting position. **DO NOT** turn the screw to the point that it stops (4-5 turns counterclockwise). To ensure that fuel will not spill during use, check that the fuel cap is screwed on tightly and the fuel cap screw is in the venting position.
2. After using the edger and before putting away or transporting it in a truck bed, screw the fuel cap screw and the fuel cap on (clockwise) tightly. This will prevent fuel from leaking during storage. The fuel cap will not leak during storage if fuel cap is tight and the screw at the top is tight.

STARTING AND STOPPING ENGINE

- Move engine to a well-ventilated area, outdoors, to prevent carbon monoxide poisoning.
- Move to an area away from flames or sparks, to avoid ignition of vapors if present.
- Remove all debris from air cleaner holes and fuel cap to ensure proper air flow.

COLD ENGINE START

Starting engine for first time or after engine has cooled off or after running out of fuel.

1. Move choke lever to RUN position.

NOTE: Choke must be in the RUN position when pushing or using the primer bulb.

2. Prime unit until primer hose is filled with fuel.

NOTE: When using the primer bulb, allow the bulb to return completely to its original position between pushes.

3. Move choke lever to CHOKE position.

NOTE: Choke position is defined by moving the choke lever as far to the CHOKE position as possible.

4. Push rocker switch to the ON position.



WARNING

MAKE SURE THE UNIT IS IN A STABLE POSITION BEFORE PULLING THE STARTER HANDLE.

WHEN THE UNIT STARTS TO FIRE OR RUN, RELEASE THE THROTTLE CONTROL MOMENTARILY WITH YOUR RIGHT HAND AND RETURN YOUR LEFT HAND TO THE HANDLEBAR POSITION TO MAINTAIN CONTROL AND STABILITY OF THE UNIT WITH BOTH HANDS.

5. Squeeze throttle control with right hand. Grasp starter handle with left hand and pull out slowly, until it pulls slightly harder. Without letting starter handle retract, pull rope with a rapid full arm stroke. Let it return to its original position very slowly until unit fires or runs. Repeat this step every time the starter rope is pulled.

NOTE: If engine fails to start after 5-6 pulls, push primer one time and pull starter rope again.

6. After engine starts running, move choke lever to HALF CHOKE position until unit runs smoothly.

NOTE: Half choke is defined when the choke lever is between CHOKE and RUN.

7. Move choke lever to RUN position and move throttle to desired speed.

NOTE: Run at full throttle when possible. Do not let unit idle for extended periods of time.

WARM ENGINE START

1. Move choke lever to CHOKE position.

NOTE: Choke position is defined by moving the choke lever as far to the CHOKE position as possible.

2. Continue with Step 4 of Cold Engine Starting.

HOT ENGINE START

1. Continue with Step 4 of Cold Engine Starting.
2. If engine does not fire, refer to Step 1 of Warm Engine Starting.

TO STOP ENGINE:

1. Flip the on/off switch to the OFF position.

FOR MODEL WE43E ELECTRIC START

1. Check that the battery is connected using the white plastic connectors inside the battery box. Insert ignition key into ignition and turn key to the START position until engine starts running, then release key to the ON position. **DO NOT** hold the ignition key in the START position longer than 3 seconds.
2. Run engine for 30 to 45 seconds at HALF CHOKE position until engine warms up.
3. Move choke lever to RUN position and move throttle to desired speed.
4. To stop, turn switch to OFF position on manual start models. On electric start, turn ignition key to the OFF position.

DO NOT attempt to start engine in the following ways:

- **DO NOT** use starting fluid.
- **DO NOT** spray flammable liquids or vapors into air cleaner, carburetor or spark plug chamber.
- **DO NOT** remove spark plug and attempt to start engine. Flammable fuel can spray out & ignite from a spark from spark plug.

ADJUSTING CUTTING BLADE DEPTH

The cutting blade can be adjusted for optimum cutting depth.

NOTE: *Cutting blade depth should only be made before starting edger.*

To adjust blade depth:

1. Remove knob with threaded stud or detent pin and slide height adjuster bar down to the desired cutting height.
2. Insert knob with threaded stud or detent pin through height adjuster bar and wheel mount bracket.



CAUTION

IF ENGINE FAILS TO START AFTER TRYING STARTING PROCEDURES, PLEASE CONTACT OUR CUSTOMER SERVICE DEPARTMENT AT 800-345-6007.

STARTER ROPE CAN CAUSE AN UNANTICIPATED JERK TOWARDS ENGINE. PLEASE FOLLOW INSTRUCTIONS TO AVOID INJURY.

NEVER LEAVE ENGINE RUNNING WHILE UNATTENDED. TURN OFF AFTER EVERY USE.

NEVER CARRY MACHINE FROM ONE LOCATION TO ANOTHER WHILE ENGINE IS RUNNING.

ALWAYS WEAR A PROTECTIVE HEARING DEVICE.

DO NOT START ENGINE IF FUEL IS SPILLED. WIPE OFF EXCESS FUEL AND ALLOW TO DRY.

MAINTENANCE AND STORAGE STEPS FOR WORKING ON EQUIPMENT

1. Turn off engine switch.
2. Disconnect the spark plug wire from the spark plug.
3. Securely place the disconnected spark plug wire away from the spark plug and any metal parts. This must always be done or arcing may occur between spark plug wire and metal parts.
4. Replace or repair the part on the edger.
5. Check all parts that were repaired, or removed during repair, that they are secure and fit correctly.

NOTE: All repair parts must come from the factory. Never replace parts that are not specifically designed for the edger.

6. Reconnect the spark plug wire.

EDGER MAINTENANCE

1. The transmission case has grease installed at the factory. It is recommended that once a year the gear case be split by a qualified service professional and the grease level checked. Add a molythium-type grease only if level of grease is below top of the gears. **DO NOT OVERFILL.**
2. Keep all screws, nuts, and bolts tight.
3. For cold weather operation, store the unit in a cool environment. Transferring the unit from a cold to a warm place can cause the build up of harmful condensation.

REPLACING DAMAGED OR WORN BLADE:

1. Turn off engine switch.
2. Disconnect the spark plug wire from the spark plug and set aside.
3. Loosen nut holding blade in place. Remove nut and clamp washer.

NOTE: Nut is a left hand threaded.

4. Replace blade with new blade and secure with clamp washer and nut.
5. Reconnect the spark plug wire.

ENGINE MAINTENANCE

Please read the maintenance schedule and observe these recommendations to extend the life of your engine.

Good maintenance is essential for safe, economical, and trouble-free operation. It will also help reduce air pollution. To help you properly care for your engine, the following pages include a maintenance schedule, routine inspection procedures, and simple maintenance procedures using basic hand tools. Other service tasks that are more difficult, or require special tools, are

CAUTION

PRACTICE SAFETY AT ALL TIMES. ENGINE MUST BE TURNED OFF AND ALLOWED TO COOL, AND SPARK PLUG WIRE MUST BE DISCONNECTED BEFORE ATTEMPTING ANY MAINTENANCE OR REPAIR.

TO PREVENT ACCIDENTAL STARTING:

ENGINE MUST BE TURNED OFF AND COOL, AND SPARK PLUG WIRE MUST BE REMOVED FROM SPARK PLUG BEFORE CHECKING AND ADJUSTING ENGINE OR EQUIPMENT.

TEMPERATURE OF MUFFLER AND NEARBY AREAS MAY EXCEED 150° F (65° C). AVOID THESE AREAS.

CHECK EDGER OFTEN FOR LOOSE NUTS AND BOLTS. KEEP THESE ITEMS TIGHTENED.

ANY MAINTENANCE AND REPAIR ON THE ENGINE AND EDGER MUST BE DONE BY AN ADULT.

ENGINE MUST BE SHUT-OFF, COOL, AND SPARK PLUG WIRE REMOVED BEFORE ANY REPAIR OR MAINTENANCE CAN BE DONE.

best handled by professionals and are normally performed by a technician or other qualified mechanic.

Maintenance, replacement or repair of the emissions control devices and systems may be performed by any non-road engine repair establishment or individuals. However, items must be serviced by an authorized dealer to obtain "no charge" emissions control service.

The maintenance schedule applies to normal operating conditions. If you operate your engine under unusual conditions, such as sustained high-load or high-temperature operation, or use in unusually wet or dusty conditions, consult your servicing dealer for recommendations applicable to your individual needs and use.

MAINTENANCE SCHEDULE

MAINTENANCE ITEM		Every 8 hours (daily)	Every 20 hours or seasonally	Each Year
Clean Engine and Check Bolts & Nut		X		
Air Filter (See Air Filter section)	Check	X		
	Clean *		X	
	Replace		X	X
Spark Plug (Gap .028") (See Spark Plug section)	Check/Adjust		X	
	Replace			X

* Service more frequently under dusty conditions

COOLING FINS

Cooling fins, air inlets and linkages must be free from any debris before each use.

AIR FILTER

Never run engine without air cleaner properly installed. Added wear and engine failure may occur if air cleaner is not installed on engine.

Service air cleaner every 3 months or after 20 hours of operation. Clean filter daily in extremely dusty conditions.



IMPORTANT

NEVER TWIST AIR FILTERS WHEN CLEANING. ALWAYS PRESS.

Steps for Cleaning Air Filter (Ring Style Foam Filter) - See parts breakdown section.

1. Wash in warm water with liquid detergent and water until dirt and debris are removed. Press filter when washing, do not twist.
2. Rinse in warm water until soap and dirt are removed.
3. Dry filter by wrapping in a clean cloth and pressing filter until it is dry.
4. Apply a lightweight motor oil or thin based machine oil to the entire filter.
5. Remove excess oil.
6. Attach the filter and air cleaner cover to the engine.

SPARK PLUG

The recommended spark plug is a NGK BM6A which cross references to a Champion CJ8.

1. Check spark plug at the beginning of each season.
2. Disconnect the spark plug cap, and clean any debris from around the spark plug area.
3. Remove spark plug and replace if any of the following occur; pitted electrodes, burned electrodes, cracked porcelain, or deposits around electrodes.
4. After analysis, seat spark plug and tighten with spark plug wrench. Reconnect the spark plug wire.
 - Reinstall original spark plug, tighten additional 1/2 turn.
 - Installing new spark plug, adjust spark plug gap to .028" and tighten additional 1/8 – 1/4 turn.

NOTE: Loose spark plug may overheat and damage engine. Over tightened spark plug may damage threads in the cylinder head.

CARBURETOR

Never tamper with factory setting of the carburetor.



CAUTION

TO AVOID INJURY OR DEATH, NEVER SIPHON FUEL BY MOUTH.

NEVER STORE ENGINE WITH FUEL IN THE TANK INSIDE A BUILDING. POTENTIAL SPARKS MAY BE PRESENT FOR IGNITION OF FUEL AND FUEL VAPORS.

TRANSPORTING YOUR EDGER

1. After using the edger and before transporting it in a truck bed, screw the fuel cap screw and fuel cap on (clockwise) tightly. The fuel cap will not leak during transporting if fuel cap is tight and the screw at the top is tight. Never transport engine inside an enclosed space within a vehicle. Fuel or fuel vapors may ignite causing serious injury or death.
2. If fuel is present in the fuel tank, transport in an open vehicle in an upright position.
3. If an enclosed vehicle must be used, remove fuel into an approved red fuel container. DO NOT siphon by mouth.
4. Run engine to use up the fuel in the carburetor and fuel tank. Always run engine in a well-ventilated area.
5. Wipe away any spilled fuel from engine and edger. Allow to dry.
6. Fuel cap and fuel cap vent screw should be turned down tightly before transporting edger in a vehicle.

LONG-TERM STORAGE

(30 DAYS OR MORE WITHOUT USE)

If your edger will not be used for more than one month, prepare it for long term storage.

STEPS FOR LONG-TERM STORAGE

1. Add fuel stabilizer according to manufacturer's instructions.
2. Run engine for 10-15 minutes to ensure that the stabilizer reaches the carburetor.
3. Remove the remainder of the fuel from the gas tank into an approved fuel container.
4. Store edger in a vertical position.
5. Remove all debris from edger engine and blade.



TROUBLESHOOTING AND REPAIR

At Earthquake®, we build quality and durability into the design of our products; but no amount of careful design by us, and careful maintenance by you, can guarantee a repair-free life for your Earthquake® Edger. Most repairs will be minor, and easily fixed by following the suggestions in the troubleshooting guide in this section.

The troubleshooting guide will help you pinpoint the causes of common problems and identify remedies.

For more complicated repairs, you may want to rely on your retailer, an authorized service center or Earthquake®. Earthquake® will make the necessary repairs if a service center is not available. A parts breakdown is located toward the end of this manual.

We will always be glad to answer any questions you have, or help you find suitable assistance. To order parts or inquire about warranty, call or e-mail us using the contact information found in this section.

ORDERING REPLACEMENT PARTS

Parts can be obtained directly from the factory. To order parts visit www.getearthquake.com or call 1-800-345-6007.

For other general questions, you can e-mail us at info@ardisam.com.

Please include the following information with your order:

- 1) Part numbers
- 2) Part description
- 3) Quantity
- 4) Model number and serial number

SPARE PARTS

Only use approved Earthquake® spares.

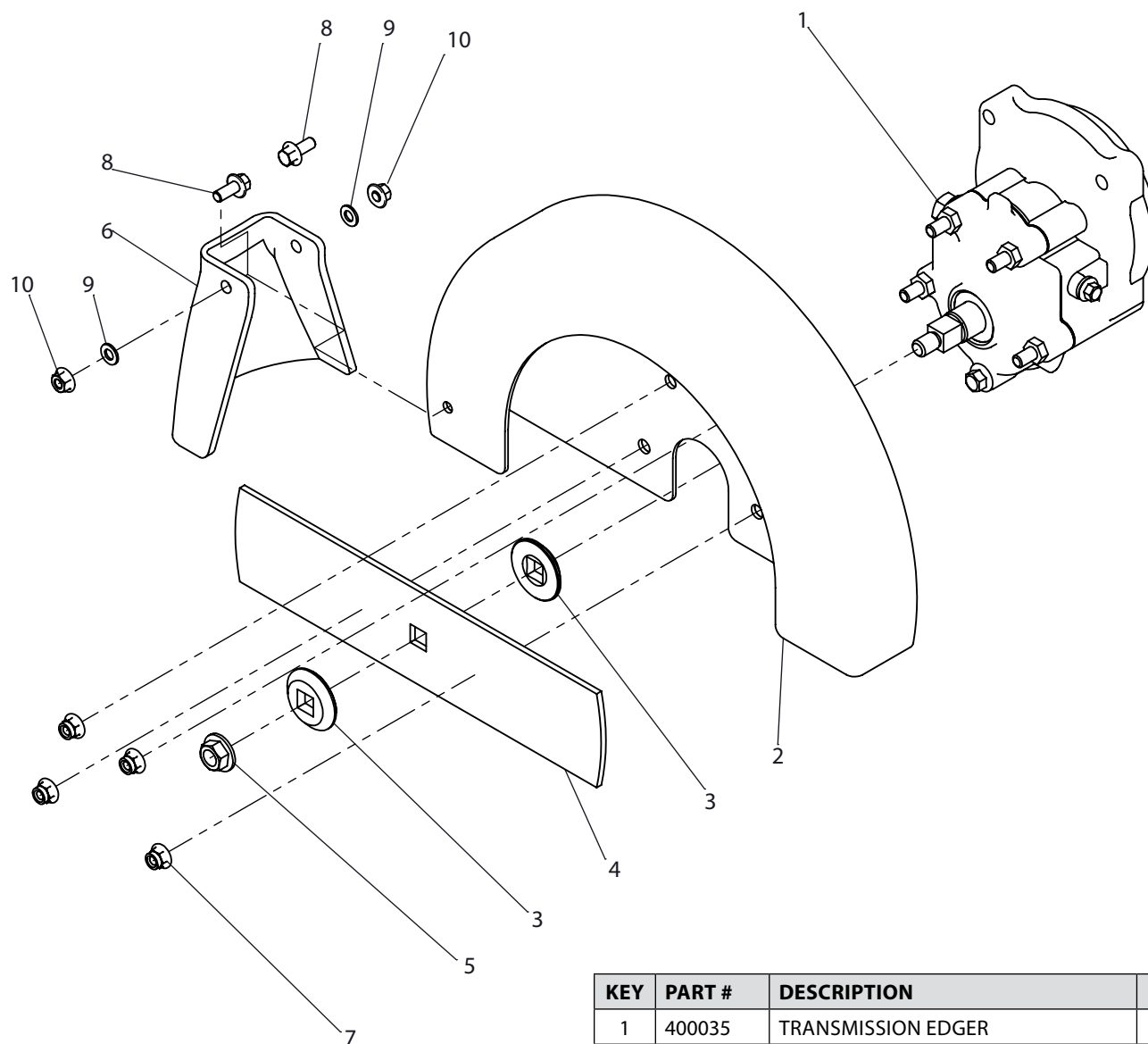
TROUBLESHOOTING GUIDE

PROBLEM	POSSIBLE CAUSE	REMEDY/ACTION
Engine will not start	1. Power switch off	1. Flip switch to ON position
	2. Spark plug wire disconnected	2. Connect spark plug wire to spark plug
	3. Out of fuel	3. Refuel
	4. Spark plug wet, faulty or improperly gapped	4. Clean, replace or gap spark plug
	5. Throttle control not held open	5. Hold throttle control open when pulling recoil handle
	6. Fuel line hose not positioned in bottom of gas tank	6. Push fuel line down into fuel in gas tank
	7. Stale fuel	7. Drain old fuel and replace with fresh. Use fuel stabilizer for future preventative measures.
Engine runs rough, floods during operation	1. Dirty air filter	1. Clean or replace air filter
	2. Choke partially engaged	2. Turn off choke
	3. Carburetor out of adjustment	3. Call factory
Engine is hard to start	1. Stale fuel	1. Drain old fuel and replace with fresh. Use gas stabilizer at end of season
	2. Spark plug wire loose	2. Make sure spark wire is securely attached to spark plug
	3. Dirty carburetor	3. Clean carburetor, use gas stabilizer, new gas can
	4. Throttle control not held open	4. Prime unit 3 more times, then hold throttle open when pulling recoil handle
Engine misses or lacks power	1. Clogged gas tank	1. Remove and clean gas tank
	2. Clogged air filter	2. Clean or replace air filter
	3. Carburetor out of adjustment or bad	3. Call factory
	4. Spark plug wet, faulty or improperly gapped	4. Clean, replace or gap spark plug
Engine runs, then quits	1. Gas cap not venting	1. Clean or replace gas cap, check vent
	2. Plugged fuel filter	2. Clean or replace fuel filter
	3. Carburetor out of adjustment or bad	3. Call factory
Engine revs too high	1. Carburetor out of adjustment	1. Call factory
Edger blade turn at idle	1. Idle speed too high	1. Adjust idle speed lower
	2. Broken clutch spring	2. Replace spring
Edger blade fails to turn	1. Jammed, foreign object in blade area	1. Clear obstruction
Edger blade fails to cut properly	1. Blade worn out	1. Replace blade
	2. Blade wobbles	2. Replace clamp washer, tighten nut
MODEL WE43E ONLY		
Charger won't charge	1. Battery worn out	1. Replace with new battery
	2. Connectors not plugged in	2. Open battery box and connect battery connectors
Key won't start machine	2. Battery not charged	1. Charge battery

Contact service provider at 800-345-6007 if above remedies fail.

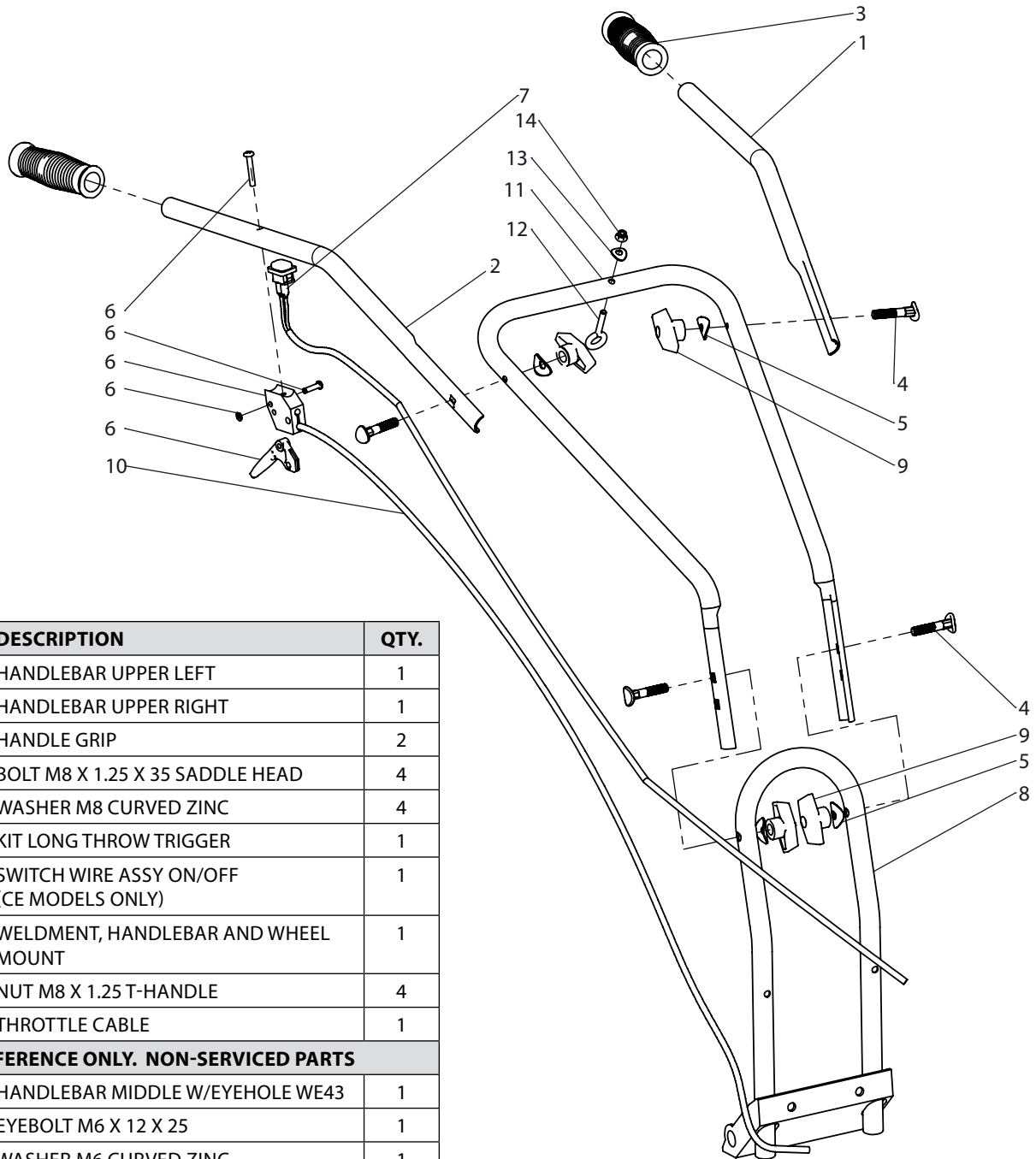
PARTS BREAKDOWN

WE43 SERIES TRANSMISSION AND BLADE PARTS EXPLOSION AND LIST



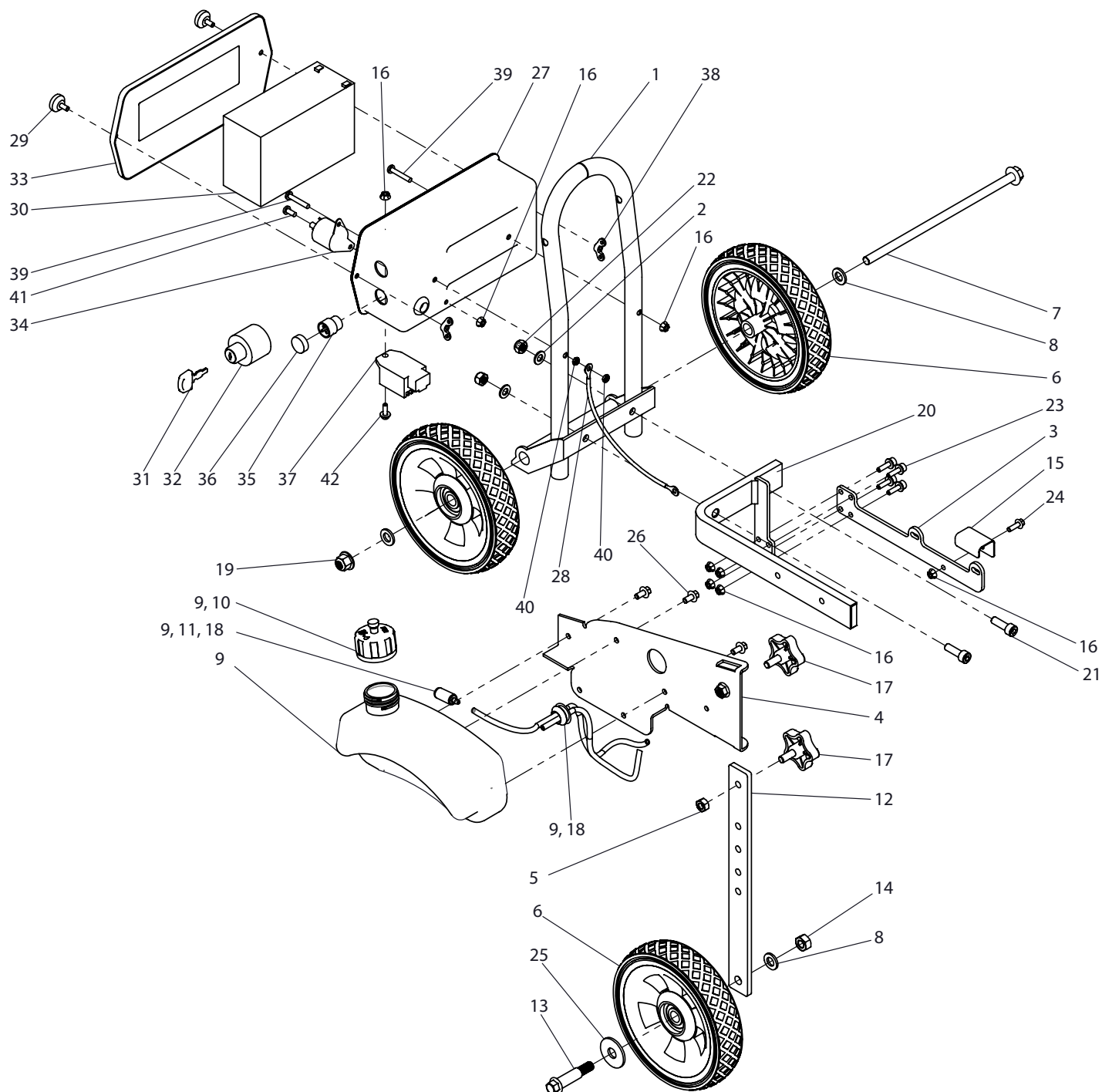
KEY	PART #	DESCRIPTION	QTY.
1	400035	TRANSMISSION EDGER	1
2	400007	GUARD BLADE EDGER	1
3	400014	WASHER CLAMP EDGER BLADE	2
4	400009	BLADE EDGER	1
5	400013	NUT M8 HHF LH GR 8.8 ZN	1
6	4000171	SHIELD DEBRIS RUBBER	1
FOR REFERENCE ONLY. NON-SERVICED PARTS			
7	--	NUT FLANGE LOCK M6	4
8	--	BOLT M5 X 0.8 X 12 HHF GR8.8 ZN	2
9	--	WASHER FLAT M5 53 X 10 X 1.0 ZN	2
10	--	NUT M5 X 0.8 TOPLCK HHF GR8.8 ZN	2

WE43 SERIES HANDLEBAR PARTS EXPLOSION AND LIST



KEY	PART #	DESCRIPTION	QTY.
1	4690	HANDLEBAR UPPER LEFT	1
2	4689	HANDLEBAR UPPER RIGHT	1
3	4639	HANDLE GRIP	2
4	4642	BOLT M8 X 1.25 X 35 SADDLE HEAD	4
5	4641	WASHER M8 CURVED ZINC	4
6	4825	KIT LONG THROW TRIGGER	1
7	1021CE	SWITCH WIRE ASSY ON/OFF (CE MODELS ONLY)	1
8	400008	WELDMENT, HANDLEBAR AND WHEEL MOUNT	1
9	4640	NUT M8 X 1.25 T-HANDLE	4
10	400041	THROTTLE CABLE	1
FOR REFERENCE ONLY. NON-SERVICED PARTS			
11	--	HANDLEBAR MIDDLE W/EYEHOLE WE43	1
12	--	EYEBOLT M6 X 12 X 25	1
13	--	WASHER M6 CURVED ZINC	1
14	--	NUT FLANGE LOCK M6	1

WE43 SERIES CHASSIS PARTS EXPLOSION

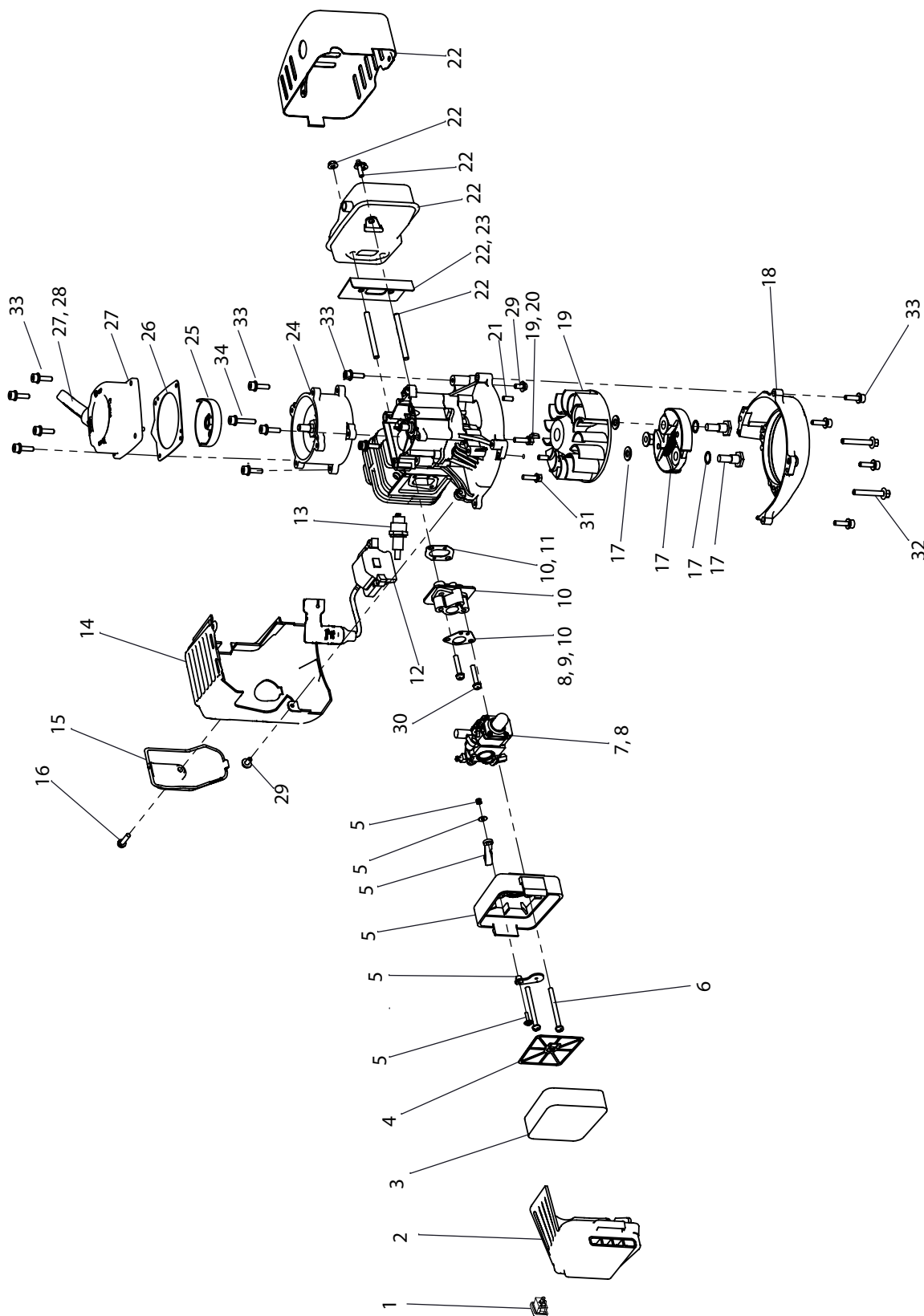


WE43/WE43E CHASSIS PARTS LIST

KEY	PART #	DESCRIPTION	QTY.
1	400008	WELDMENT HANDLE BAR AND WHEEL MOUNT	1
2	400024	WASHER FLAT M8 8.4 X 16 X 1.6 THK GR8.8 ZN	2
3	400006	MOTOR MOUNT LOWER	1
4	400003	BRACKET WHEEL MOUNT EDGER	1
5	W1265V0900	NUT M8 X 1.25 H NYLK GR8.8 ZN	1
6	4634	WHEEL	3
7	4687	BOLT M10 X 1.5 X 225 MM HEX HD	1
8	2431	WASHER FLAT M10 10.5 X 20 X 2 THK GR8.8 ZN	3
9	400037	KIT FUEL TANK EDGER	1
10	300401	GAS CAP VIPER ENGINE SCREW VENT (AVAILABLE SEPARATELY OR AS PART OF FUEL TANK KIT)	1
11	3004103	FUEL FILTER (AVAILABLE SEPARATELY, AS PART OF FUEL TANK KIT, OR AS PART OF THE FUEL LINE KIT)	1
12	400005	MOUNT BAR WHEEL AND HEIGHT ADJUSTER	1
13	400042	BOLT SHOULDER M10 X 55	1
14	W1265V0903	NUT M10 HNYLK GR8.8 ZN	1
15	400017	SHIELD DEBRIS WE43	1
16	--	NUT M5 X 0.8 TOPLCK HHF GR8.8 ZN	8
17	400027	KNOB M8 X 16 HEIGHT ADJUSTER	2
18	11274	KIT FUEL LINES	1
FOR REFERENCE ONLY. NON-SERVICED PARTS			
19	--	NUT M10 HHFCS TOP LCK ZINC	1
20	--	WELDMENT FRAME L SHAPED	1
21	--	BOLT M8 X 1.25 X 25 SHCS GR 8.8 ZN	2
22	--	NUT M8 NYLOCK	2
23	--	BOLT M5 X 20 SHCS GR8.8 ZN	4
24	--	BOLT M5 X 0.8 X 16 MM HHF GR 8.8 ZN	1
25	--	WASHER M12 X 37 X 1.5 WIDE FLAT	1
26	--	BOLT M6 X 1.0 X 12 (8MM) FFH GR8.8 ZN	3

WE43E ELECTRIC START MODEL ONLY			
KEY	PART #	DESCRIPTION	QTY.
27	4656	BATTERY BOX	1
28	300523	WIRE GROUND	1
29	300502	BOLT M5 X 0.8 X 15 THUMB SCREW	2
30	46122	BATTERY 12 V 7A	1
31	46139	KEY FOR KEY SWITCH	1
32	46140	KEY SWITCH	1
33	4657	COVER BATTER BOX	1
34	4660	SOLENOID	1
35	4661	CHARGER PIGTAIL	1
36	4663	CAP CHARGER PIG TAIL	1
37	4659	VOLTAGE RECTIFIER	1
38	300501	NUT M5 X 0.8 MM WING YEL ZINC	2
FOR REFERENCE ONLY. NON-SERVICED PARTS			
39	--	BOLT M5 X 0.8 . 30 MM PH GR 8.8 ZN	2
40	--	NUT M5 X 0.8 HJAM GR 8.8 ZN	2
41	--	BOLT M5 X 0.75 X 12 PPHMS ZN	1
42	--	BOLT M5 X 0.8 X 16 MM PPHMS GR8.8 ZN W/WASHER	1

ENGINE PARTS EXPLOSION



ENGINE PARTS LIST

KEY	PART #	DESCRIPTION	QTY.
1	1021	SWITCH ROCKER (WE43 ONLY)	1
2	3004158	COVER AIR FILTER W/SWITCH HOLE (WE43 ONLY)	1
	3004161	COVER AIR FILTER NO SWITCH HOLE (WE43E, WE43CE)	1
3	3004156	AIR FILTER ELEMENT BLOCK STYLE	1
4	3004157	PLATE REINFORCEMENT AIR FILTER	1
5	3004150	ASSEMBLY AIR FILTER BASE BLOCK STYLE	1
6	300456	BOLT M5 X 50MM W/ WASHER	2
7	300486	CARBURETOR COMPLETE	1
8	3004114	KIT CARBURETOR REPAIR	1
9	300479	GASKET CARBURETOR	1
10	11205	KIT INTAKE MANIFOLD	1
11	300476	GASKET INTAKE	1
12	300472	IGNITION COIL (WE43 ONLY)	1
	11173	ASSY LONG GROUND WIRE COIL CE (WE43CE)	1
	300194	IGNITION COIL (WE43E)	1
13	BM6A	SPARK PLUG (WE43, WE43E)	1
	35906	SPARK PLUG (WE43CE ONLY)	1
14	300482	SHROUD VIPER ENG	1
15	300483	COVER ENGINE SHROUD	1
16	300439	BOLT M5 X 20MM WASHER HD	1
17	11235	KIT CLUTCH VIPER	1
18	300487	COVER ENGINE MOUNTING HP ENG	1
19	11209	KIT FLYWHEEL	1
20	300338	KEY FLYWHEEL VIPER ENG	1
21	300467	PIN LOCATING VIPER ENG	2
22	11198	KIT MUFFLER SIDE EJECTION	1
23	300475	GASKET MUFFLER VIPER ENG	1
24	300496	STARTER ELECTRIC 2 CYCLE	1
25	300491	CUP RECOIL STARTER	1
26	300429	SHIM RECOIL	1
27	400036	ASSEMBLY RECOIL STARTER WE43	1
28	3004121	HANDLE RECOIL STANDARD	1

KEY	PART #	DESCRIPTION
NON-SERVICED PARTS---REFERENCE ONLY		
29	--	BOLT M5 X 0.8 X 12 PPHMS GR 8.8 ZN
30	--	BOLT M5 X 25MM WASHER HD
31	--	BOLT M5 X 20MM VIPER ENG W/WASHER
32	--	BOLT FLANGE M6X40
33	--	BOLT M5 X 20 SHCS GR 8.8 ZN
34	--	BOLT M5 X .8 X 28 MM SHCS GR 8.8 ZN



EC DECLARATION OF CONFORMITY



Name and Address of the manufacturer: *Ardisam Manufacturing Inc.
1690 Elm Street, Cumberland, WI U.S.A 54829*

Name and Address of the Authorised Representative in the European Community: *Not applicable*

Name and Address of person authorised to compile the technical file: *Mr. C. Hindle, Ardisam Europe,
3 Appleyard Close, Swinton, Manchester. M27 8AZ. United Kingdom*

Description of Equipment: *Walk-behind, internal combustion engine powered lawn edger – electric start / manual start*

Model / Type: *WE43E / WE43*

Serial No.: *00000000000000000000000000000000 - 50000000000000000000000000000000*

Directives / Conformity Assessment Procedures: *Machinery Directive (2006/42/EC) / Annex VIII*

Name/address of Notified Body: *Not applicable*

Technical standards and specifications:

Place of Declaration & Date: *Ardisam Inc., Cumberland, WI. USA November 2011*

Signed: 

Printed Name of Authorised Signatory: *Robert Ruppel*

Position in Company: *Director of Engineering*



WE43E AND WE43 EDGER

WARRANTY TERMS AND CONDITIONS

PRODUCT WARRANTY: 1-YEAR LIMITED WARRANTY

Ardisam, Inc., a manufacturing company, warrants this product to be free from defects in the material or workmanship for a period of one year from the date of purchase. During the one-year warranty of this product, Ardisam will, at their discretion, furnish parts and/or labor to correct any defect caused by faulty material or workmanship. Any unit used in a commercial application is covered for a period of 90 days after purchase. This warranty applies to the original owner with a proof of purchase and is not transferable. This guarantee is void unless the warranty card is properly filled out and received by Ardisam within 30 days of purchase or go to www.getearthquake.com for online registration.

ENGINE WARRANTY: 2-YEAR LIMITED WARRANTY

Ardisam, Inc., a manufacturing company, warrants its Viper® Engines under a two-year limited warranty to be free from defects in materials and workmanship for the service life of the product not to exceed twenty-four consecutive months from the date of purchase for consumer applications. As a Viper® small engine owner, the owner is responsible for executing proper maintenance listed in the operating and maintenance instructions. The warranty period begins on the date of purchase by the first retail consumer or commercial end user, and continues for the period of time stated above.

• These warranties apply only to products which have not been subjected to negligent use, misuse, alteration, accident, unauthorized parts, failure to use proper fuel and oil, or if repairs have been performed at non-authorized service centers. These warranties supersede all other warranties either expressed or implied and all other obligations or liabilities on the part of Ardisam. Ardisam does not assume, and does not authorize any other person to assume on Ardisam's behalf, any liability in connection with the sale of Ardisam products. **To be at "No Charge," however, warranty work must be sent directly to Ardisam, Inc., or one of our authorized service centers and performed by them.**

To obtain warranty service and replacement instructions, contact the Ardisam customer service department for warranty authorization. If choosing to ship a product to Ardisam for warranty repair, the customer must first have prior approval from Ardisam by calling the customer service department for a return material authorization number (RMA#). Under these circumstances, all items must be shipped prepaid. Ardisam will at no charge, repair or replace, at their discretion, any defective part which falls under the conditions stated above. Ardisam retains the right to change models, specifications and price without notice.

EXPLANATION OF EMISSIONS CONTROL WARRANTY PROVISIONS

Viper® Engines are designed, built and equipped to meet all EPA requirements. It warrants that it is free from defects in material and workmanship that could cause failure to the warranted part; and that it is identical in all material respects to the engine described in the manufacturer's application for certification. When a warrantable condition exists, Ardisam will repair your engine at no cost to you, including parts and labor. The engine emissions label will indicate certification information. Purchasers located more than 100 miles from a Viper® authorized repair center in need of warrantable repair should contact customer service. If it is determined that warranted repair is indeed necessary, Viper® will cover the cost of shipping to an authorized Viper® repair center. All such requests must first be pre-approved by customer service prior to shipping.

Listed below are the parts covered by the emissions control systems warranty. Some parts listed below may require scheduled maintenance and are warranted up to the first scheduled replacement point for that part. Coverage under this warranty includes only the parts listed below (the emission and evaporation control systems) if so equipped:

- Air Filter Assembly (only to the first scheduled replacement point)
- Fuel Filter (only to the first scheduled replacement point)
- Carburetor
- Fuel Lines, Fuel Line Fittings and Clamps
- Fuel Metering Valve (if equipped)
- Evaporative System (if equipped)
 - Canister (if equipped)
 - Canister filter (if equipped)
 - Vapor hose (if equipped)
 - Orifice connector (if equipped)
 - Fuel tank
 - Fuel cap
 - Primer bulb canister (if equipped)
- Spark Plugs
- Magneto Ignition System
- Muffler Assembly

LIMITATIONS

The Emission Control Systems Warranty shall not cover any of the following:

- a) Repair or replacement required because of misuse or neglect, improper maintenance, repairs improperly performed or replacements not conforming to Earthquake® specifications that adversely affect performance and/or durability and alterations or modifications not recommended or approved in writing by Earthquake®.
- b) Replacement of parts and other services and adjustments necessary for required maintenance at or after the first scheduled replacement point;
- c) Consequential damages such as loss of time, inconvenience, loss of use of the engine or equipment, etc.
- d) Diagnosis and inspection fees that do not result in eligible warranty service being performed; and
- e) Any add-on or modified part, or malfunction of authorized parts due to the use of add-on or modified parts.

These items will be covered for a period of **two years** from the date of the original purchase. Viper® warrants that: the components are designed, built and equipped so as to conform with all applicable regulations adopted by the EPA; that they are free from defects in material and workmanship that could cause failure to the engine or other; and that the components used are identical in all material respects to the engine described in the manufacturer's application for certification. The warranty period begins on the date the engine is originally purchased.

MAINTENANCE AND REPAIR REQUIREMENTS

The owner is responsible for the proper use and maintenance of the engine. Earthquake® recommends that all receipts and records covering the performance of regular maintenance be retained in case questions arise. If the engine is resold during the warranty period, the maintenance records should be transferred to each subsequent owner. Ardisam reserves the right to deny warranty coverage if the engine has not been properly maintained; however, Ardisam may not deny warranty repairs solely because of the lack of repair maintenance or failure to keep maintenance records.

Normal maintenance replacement or repair of emission control devices and systems may be performed by any repair establishment or individuals; however, warranty repairs must be performed by an Earthquake® authorized service center. Any replacement parts or service that is equivalent in performance and durability may be used in non-warranty maintenance or repairs, and shall not reduce the warranty obligations of the engine manufacturer.

The warranty on emissions-related parts is as follows:

- Any warranted part that is not scheduled for replacement as required maintenance in the owner's manual supplied, is warranted for the warranty period stated above. If any such part fails during the period of warranty coverage, that part will be repaired or replaced at no charge to the owner. Any such part repaired or replaced under the warranty will be warranted for the remaining warranty period.
- Any warranted part that is scheduled only for regular inspection in the owner's manual supplied, is warranted for the warranty period. Any such part repaired or replaced under warranty will be warranted for the remaining warranty period.
- Any warranted part that is scheduled for replacement as required maintenance in the owner's manual supplied, is warranted for the period of time prior to the first scheduled replacement point for that part. If the part fails prior to the first scheduled replacement, the part will be repaired or replaced at no charge to the owner. Any such part repaired or replaced under warranty will be warranted for the remainder of the period prior to the first scheduled replacement point for the part.
- Add on or modified parts that are not exempted by the Air Resources Board may not be used. The use of any nonexempted add on or modified parts by the owner will be grounds for disallowing a warranty claim. The manufacturer will not be liable to warrant failures of warranted parts caused by the use of a nonexempted add on or modified part.



This image shows a full page of blank, lined paper. It features approximately 20 evenly spaced horizontal grey lines across its entire width, providing a template for handwriting practice or general note-taking. The margins are consistent on all sides.



NOTES

This image shows a single sheet of white paper with horizontal ruling lines. The lines are evenly spaced and run across the width of the page. There are no margins, text, or other markings on the paper.



Earthquake®, Division of Ardisam, Inc.
1160 8th Avenue, PO Box 666
Cumberland, WI 54829
800-345-6007 | Fax 715-822-2223
E-mail: info@ardisam.com

All weights, specifications and features are approximate and are subject to change without notice. Due to continuous product improvements, product images may not be exact. Items used for props not included. Some assembly may be required.

Check for parts online at www.getearthquake.com or call 800-345-6007 M-F 8-5