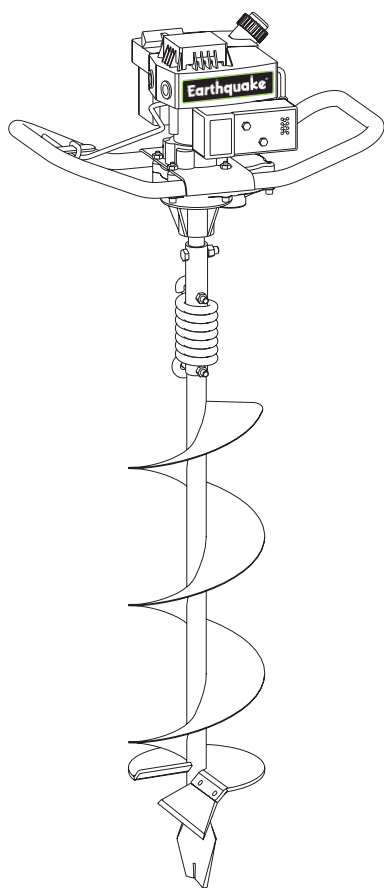


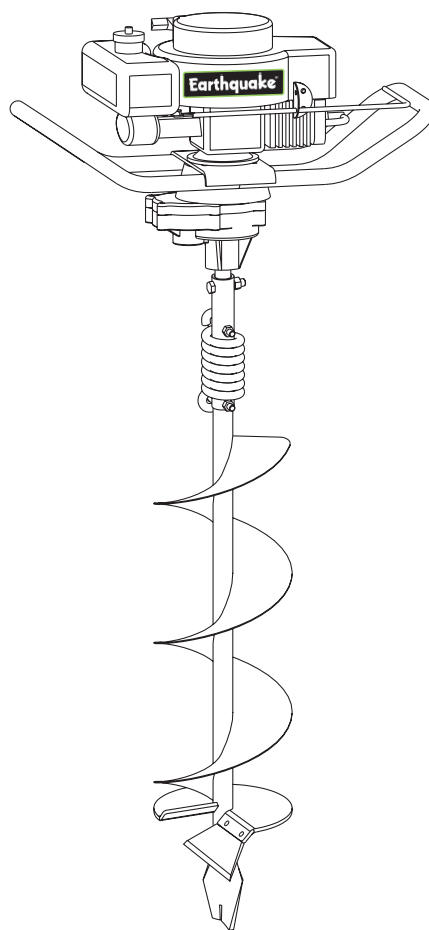
Earthquake®

OPERATOR'S MANUAL

POWER EARTH AUGER



Model 8900E



Model 9000E



REGISTRATION AND WARRANTY

THANK YOU . . .

for purchasing an Earthquake Earth Auger from Ardisam, Inc. We guarantee that this auger conforms to applicable North American safety standards, and have worked to ensure that it meets high standards for usability and durability. With proper care, your auger will provide many years of service. Please take the time to read this manual carefully to learn how to correctly operate and maintain your auger. Congratulations on your investment in quality.

CONTENTS

Registration/Warranty	2
Safety	3
Operation	4
Maintenance & Storage	5
Service, Troubleshooting, and Repair	6-11

REGISTRATION

Your auger's serial number is located on the powerhead decal under the Earthquake name. Engine serial number is located directly above spark plug. Write these numbers and the model number in the space provided. You will need these numbers if you order parts.

Model Number _____

Serial Number _____

Engine Serial Number _____

Date of Purchase _____

Place of Purchase _____

One Year Limited Warranty

The Ardisam, Inc., Manufacturing Company warrants this Earthquake Model 8900E or 9000E Earth Auger to be free from defects in material or workmanship. Conditions of this warranty include:

What is covered under warranty:

Ardisam, Inc. will repair or replace any part defective in workmanship or material within one year after delivery of the auger to the original purchaser.

What is not covered under warranty:

This warranty applies only to products which have not been repaired or altered outside our factory. It covers only defects resulting from normal use, and does not cover defects arising from misuse, alteration, negligence, commercial use, or accident. This warranty applies only to the original purchaser, and is not transferrable.

How to obtain service:

Return the product to us at the address below with transportation charges prepaid.

This warranty supersedes all other warranties either expressed or implied and all other obligations or liabilities on our part. Ardisam, Inc., does not assume, and does not authorize any other person to assume for us, any liability in connection with the sale of our products. This guarantee is void unless warranty card is properly filled out and returned to Ardisam, Inc., Cumberland, Wisconsin, at time of purchase.



Ardisam, Inc.

1690 Elm Street, Cumberland, WI 54829
Phone (715) 822-2415 Main Fax (715) 822-2223
1-800-345-6007
Email info@ardisam.com
www.ardisam.com

CALIFORNIA PROPOSITION 65 WARNING

Engine exhaust from this product contains chemicals known to the State of California to cause cancer, birth defects, or other reproductive harm.

OWNER'S RESPONSIBILITY

Accurate assembly and safe and effective use of the auger is the owner's responsibility.

1. Read and follow all safety instructions.
2. Carefully follow all assembly instructions.
3. Maintain the auger according to directions and schedule included.
4. Ensure that anyone who uses the auger is familiar with all controls and safety precautions.

CAUTIONS AND IMPORTANT NOTES

Two symbols which draw attention to information of special interest appear throughout this manual. These comments range in importance from helpful hints to warnings about risk of personal injury. Please take the time to read and understand them.



CAUTION

Indicates a situation which may cause personal injury or damage to the auger or property.



Provides helpful information for proper assembly, operation, or maintenance of your auger.

IMPORTANT SAFETY PRECAUTIONS

Please read this section carefully. Operate the auger according to the safety instructions and recommendations outlined here and inserted throughout the text. Make sure anyone who uses the auger has read the instructions and is familiar with the controls.



This symbol points out important safety instructions which if not followed could endanger your personal safety. Read and follow all instructions in this manual and any others provided with this equipment.

1. Do not carry the auger powerhead between holes with the engine running.
2. The auger should not rotate when the engine is idling. If it does rotate when engine is idling, contact Ardisam, Inc. for instructions.
3. Always keep hands, feet, hair and loose clothing away from any moving parts on engine and auger.
4. Do not allow children to operate this power auger. Do not allow adults to operate the auger without proper instruction.
5. Do not operate any power equipment under the influence of alcohol or drugs.
6. Keep all screws, nuts and bolts tight.
7. Engine should be shut off before any repairs are attempted.
8. Temperature of muffler and nearby areas may exceed 150° F (65° C). Avoid these areas.
9. Never run engine indoors or in enclosed, poorly ventilated areas. Engine exhaust contains carbon monoxide, an odorless and deadly gas.



OPERATION

REGISTRATION FORM

Complete and return. Your auger's serial number is located on the powerhead decal under the Barracuda name. Record this number and the model number in the space provided on page 2 of this manual. You will need these numbers if you order parts. Fill out and mail the registration card located in your parts packet. **Warranty is valid only if your completed registration card is received by Ardisam, Inc., at time of purchase.**

SPARK PLUG INSTALLATION

If your powerhead does not have the spark plug already installed for you. You will have to install it following the instructions given below.

1. Locate the spark plug in the parts packet.
2. With powerhead laying on its side, place spark plug in hole on right side of engine.
3. Turn by hand until snug.
4. Use a 3/4" wrench or socket to tighten up.

OPERATION

CAUTION

Please do not start your auger until you have read the Engine Manual that came with your engine, and the section in this manual titled Safety. If you have read these, follow the steps below to start your auger. Always perform this pre-start checklist before starting the engine.

1. Read engine operating manual and follow instructions for fuel type, starting, etc. **BE SURE TO USE PROPER GAS/OIL MIXTURE.**
2. The clutch will transfer maximum power after about two hours of normal operation. During this break-in period clutch slippage may occur. The clutch should be kept free of oil or other moisture for efficient operation.
3. Dig holes without placing excessive body weight on the unit. The auger operates most efficiently with a shaving action caused by the weight of the unit itself.
4. Never run engine indoors. Exhaust fumes are deadly.
5. Do not use an ice auger in earth.
6. The ice auger blade protector should be attached to the auger head when not in use. This will protect the cutting edge of the ice auger blade.

FUEL MIXTURE

CAUTION

Never fill fuel tank indoors. Never add gas when engine is running or hot from operation. Do not smoke when filling fuel tank.

IMPORTANT

This engine uses a gas/oil mixture. **DO NOT RUN ENGINE ON STRAIGHT GAS ONLY. ENGINE DAMAGE WILL RESULT!**

1. Mix clean, fresh, lead-free gasoline (minimum of 77 octane) with a high quality 2 cycle engine oil at the ratio of 5 oz. oil to 1 gallon gasoline. (Refer to your engine manual for further information on fuel.)
2. Mix fuel in a 1 or 2 gallon container approved for gasoline.
3. Loosen fuel cap slowly. Rest the cap on a clean surface.
4. Carefully pour fuel into the tank. Avoid spillage.
5. Immediately replace fuel cap and hand tighten. Wipe up any fuel spillage.

STARTING AND STOPPING

CAUTION

Do not hold throttle lever wide open while starting. Loss of control of auger could result.

1. Open gas cap vent if your engine is so equipped (silver steel cap).
2. Flip the toggle switch to the **on** position.
3. Move red choke lever to **full choke** position if engine is cold.
4. Pull recoil starter until engine fires.
5. Move choke lever to **half choke** position (midway between off and full).
6. Pull recoil starter until engine runs.
7. Run engine 30 to 45 seconds at full throttle on **half choke** position until engine warms up.
8. Move choke lever to **off** position.

TO STOP: Flip the toggle switch to the **off** position.

MAINTENANCE AND STORAGE



CAUTION

To prevent accidental starting:

Engine must be turned off and cool, and spark plug wire must be removed from spark plug before checking and adjusting engine or equipment.

CAUTION

Temperature of muffler and nearby areas may exceed 150° F (65° C). Avoid these areas.

CAUTION

Check auger often for loose nuts and bolts. Keep these items tightened.

MAINTENANCE AND STORAGE SAFETY

1. Always allow muffler to cool before filling fuel tank.
2. When storing for over 1 month, use gas stabilizer in fuel.
3. Keep all screws, nuts, and bolts tight.
4. Close fuel shut-off valve located between gas tank and carburetor.
5. Do not fill gas tank indoors or when engine is running or is hot.
6. The gear case has 4 oz. of grease installed at the factory. It is recommended that once a year the gear case be split and the grease level checked. Add grease only if level of grease is below top of the gears. **DO NOT OVERFILL.**
7. For cold weather operation, store the unit in a cool environment. Transferring the unit from a warm to a cold place can cause the build up of harmful condensation.

ENGINE MAINTENANCE

CAUTION

Do not operate auger before reading the engine manual provided in the parts packet.



Engine can overheat and become damaged if debris blocks the cooling fins or recoil housing.

Refer to the engine manual included in your parts packet for information on engine maintenance. Your engine manual provides detailed information and a maintenance schedule for performing the following tasks:

1. Check air cleaner. See engine manual for instructions.
2. Keep engine and parts clean. See engine manual for instructions on cleaning recoil housing area, linkage, springs and controls, muffler area, cooling fins, and spark plug.

STORAGE

CAUTION

Do not store auger in an unventilated area where fuel fumes may reach an open flame, spark or pilot light.

CAUTION

Drain fuel outdoors, away from any ignition sources. Use only approved fuel containers. Be sure engine is cool. Do not smoke.

Follow the steps below to prepare your auger for storage. Read your engine manual for detailed instructions on preparing the engine for storage.

1. Run with gas stabilizer in fuel. Screen in carburetor will glaze shut if gas stabilizer is not used before storage.
2. Drain the fuel tank. Run the engine until it stops.
3. Remove spark plug, pour one-half ounce of clean engine oil into cylinder. Pull starter handle slowly several times to distribute oil. Replace spark plug.
4. Clean entire auger.
5. Store your auger in a clean, dry building that is inaccessible to children.



SERVICE, TROUBLESHOOTING AND REPAIR

SERVICE INFORMATION



IN CASE OF A SERVICE PROBLEM, **DO NOT** SEND UNIT BACK TO RETAILER. CONTACT ARDISAM, INC. AT **1-800-345-6007**.

At Ardisam, we build quality and durability into the design of our products; but no amount of careful design by us, and careful maintenance by you, can guarantee a repair-free life for your auger. Most repairs will be minor, and easily fixed by following the suggestions in the troubleshooting guide in this section. The guide will help you pinpoint the causes of common problems and identify remedies.

For more complicated repairs, you may want to rely on your retailer or an authorized mechanic (contact your retailer for a list of authorized mechanics in your area). A parts catalog is included in this section.

*We will always be glad to answer any questions you have, or help you find suitable assistance. To order parts or inquire about warranty, call or write us at the address found in the next column under the section ordering repair parts or check out our website - **www.ardisam.com***

ORDERING REPAIR PARTS

Parts can be obtained from the store where your auger was purchased or direct from the factory. To order from the factory, call or write to:

Ardisam, Inc.
1690 Elm Street, Cumberland, WI 54829
Phone (715) 822-2415 Main Fax (715) 822-2223
1-800-345-6007
Email info@ardisam.com
www.ardisam.com

Please include the following information with your order:

1. Part numbers
2. Part description
3. Quantity
4. Model number and serial number



TROUBLESHOOTING



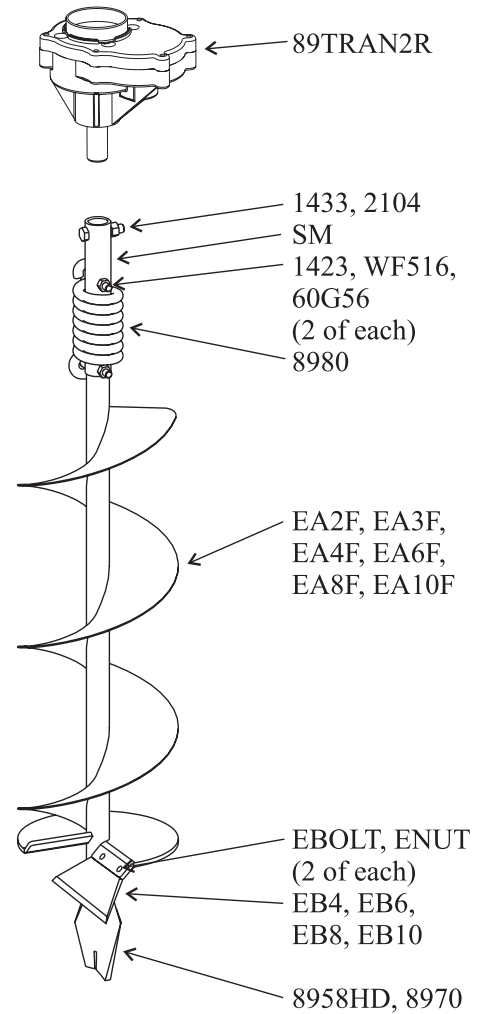
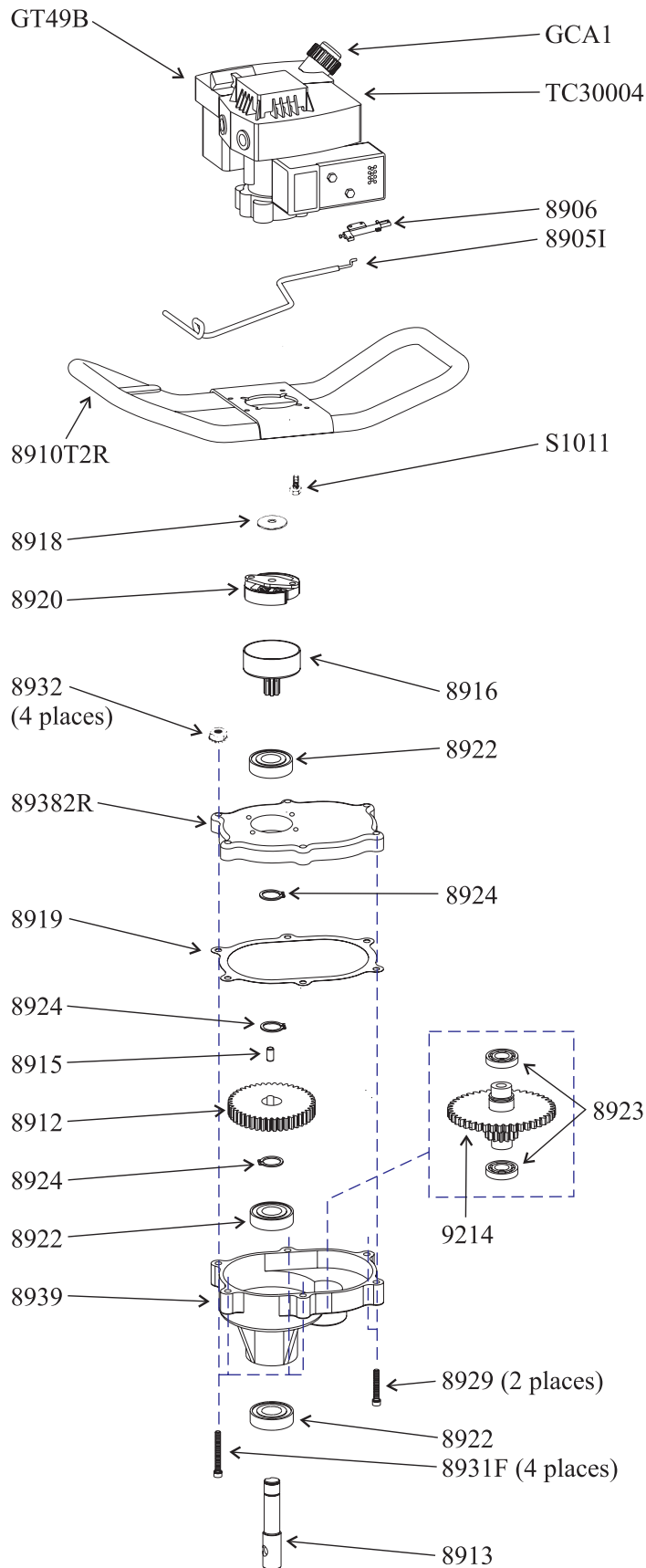
CAUTION

Practice safety at all times. Engine must be turned off and allowed to cool, and spark plug wire must be disconnected before attempting any maintenance or repair.

Problem	Possible cause	Remedy/Action
Engine will not start	<ol style="list-style-type: none"> 1. Power switch off 2. Spark plug wire disconnected 	<ol style="list-style-type: none"> 1. Flip switch to on position 2. Connect spark plug wire to spark plug
Engine runs rough, floods during operation	<ol style="list-style-type: none"> 1. Dirty air cleaner 2. Choke partially engaged 3. Carburetor out of adjustment 	<ol style="list-style-type: none"> 1. Clean or replace air cleaner 2. Turn off choke 3. Call factory
Engine is hard to start	<ol style="list-style-type: none"> 1. Stale fuel 2. Spark plug wire loose 3. Dirty carburetor 	<ol style="list-style-type: none"> 1. Drain old fuel and replace with fresh. Use gas stabilizer at end of season 2. Make sure spark wire is securely attached to spark plug 3. Clean carburetor, use gas stabilizer, new gas can
Engine misses or lacks power	<ol style="list-style-type: none"> 1. Clogged fuel tank 2. Clogged air cleaner 3. Improper carburetor adjustment 4. Spark plug dirty, improper gap, or wrong type 	<ol style="list-style-type: none"> 1. Remove and clean 2. Clean or replace 3. Call factory 4. Replace spark plug and adjust gap
Auger turns at idle	<ol style="list-style-type: none"> 1. Idle speed too high 2. Broken clutch spring 	<ol style="list-style-type: none"> 1. Adjust idle speed lower 2. Replace both springs
Auger turns, but has no power	<ol style="list-style-type: none"> 1. Choke on 2. Carburetor out of adjustment 3. Broken transmission 4. Worn clutch shoes 5. Worn engine lower seal 	<ol style="list-style-type: none"> 1. Turn off choke after engine is running 2. Call factory 3. Call factory 4. Replace clutch shoes and springs 5. Call factory
Auger jumps on ice	<ol style="list-style-type: none"> 1. Blades damaged or sharpened incorrectly 	<ol style="list-style-type: none"> 1. Buy new blades, or have blades sharpened at factory
Auger cuts slowly	<ol style="list-style-type: none"> 1. Dull blades 2. Damaged point 	<ol style="list-style-type: none"> 1. Buy new blades, or have blades sharpened at factory 2. File point
Engine runs, then quits	<ol style="list-style-type: none"> 1. Gas cap not venting 2. Screen in carburetor plugged 	<ol style="list-style-type: none"> 1. Check self venting gas cap 2. Clean screen, use gas stabilizer, clean gas can



EARTHQUAKE MODEL 8900E PARTS LIST



EARTHQUAKE MODEL 8900E PARTS LIST



MINIMUM ORDER \$10.00

POWERHEAD PARTS

<u>Part #</u>	<u>Description</u>	<u>Qty.</u>
60G70	Toggle Switch	1
89TRAN2R	Transmission Complete	1
8905I	Throttle Control Rod	1
8906	Throttle Control, Engine	1
8910T2R	Handlebar, w/throttle mounting tab	1
8912	Gear 44T	1
8913	Output Shaft, 7/8"	1
8915	Dowel Pin, 1/4" x 1/2", hardened steel	1
8916	Clutch Drum & 7T Pinion Gear	1
8918	Washer, Clutch-Hardened Steel	1
8919	Gasket	1
8920	Rotor- Centrifugal	1
8922	Ball Bearing	3
8923	Ball Bearing	2
8924	Snap Ring	3
8929	Bolt-SHCS, 1/4-20 x 1-1/2" (gear case bottom to gear case top)	2
8931F	Bolt-SHCS, 1/4-20 x 2" (gear case to ring)	4
8932	Nut-Hex, 1/4"-20 Keps	4
8939	Gear Case Bottom	1
9214	48T & 10T Pinion Gear Cluster, left hand thread	1
89382R	Gear Case Top	1
GCA1	Gas Cap	1
GT49B	Gas Tank	1
S1011	Bolt-SHCS, 1/4-20 x 3/4" (handlebar plate to engine)	4
TC30004	Gas Engine	1

EARTHAUGER PARTS

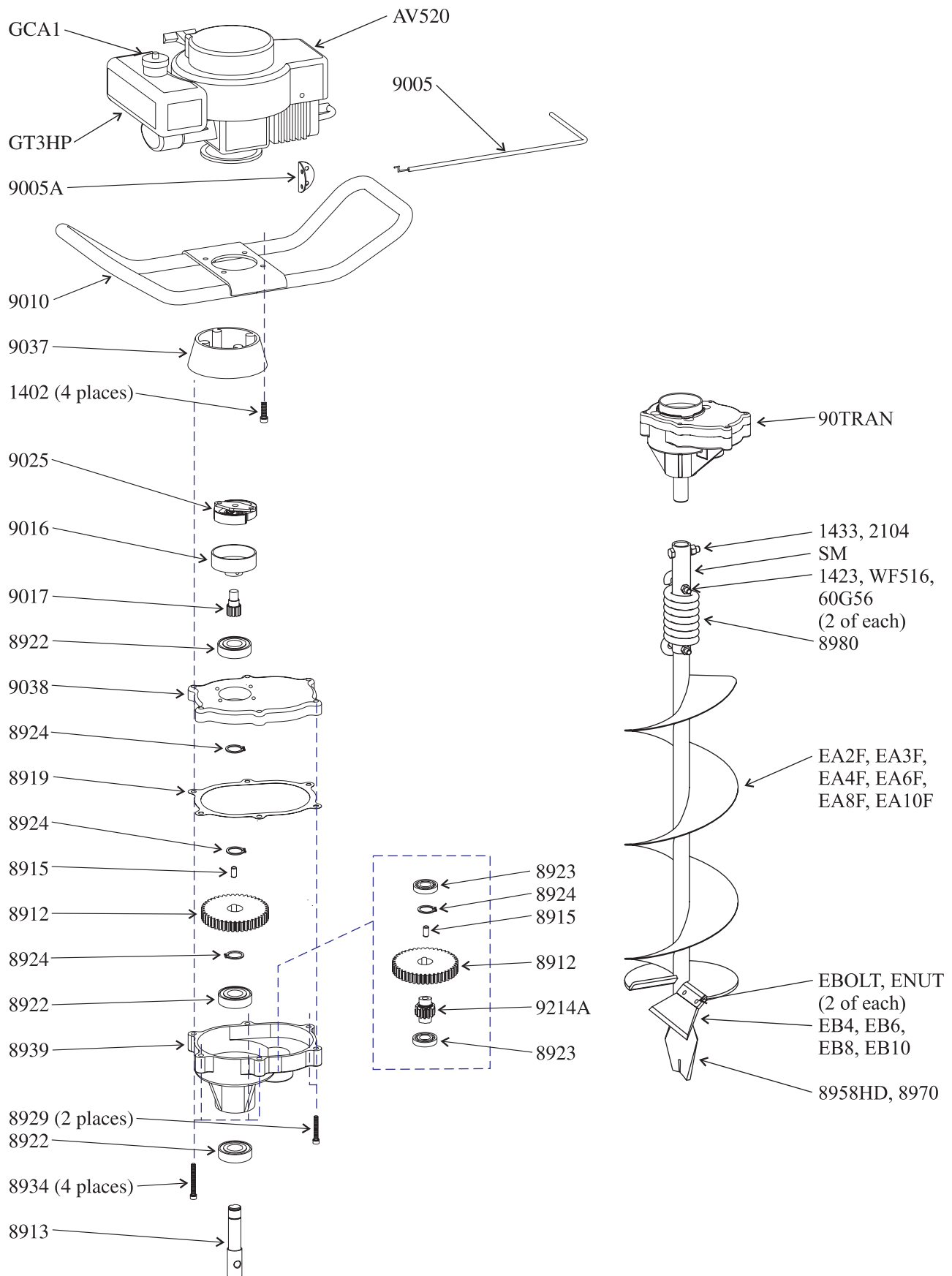
<u>Part #</u>	<u>Description</u>	<u>Qty.</u>
60G56	Nut-Hex 2-way reversible locknut, 5/16-18	2
1423	Bolt-HHCS, 5/16-18 x 2", Grade 5 (auger shock spring)	2
1433	Bolt-HHCS, 3/8-16 x 1-1/2" (auger to powerhead)	2
2104	Nut-Hex Locking, 3/8-16	2
8958HD	Fishtail Point (used on 4" or larger earth auger)	1
8970	Fishtail Point (used on 2" & 3" earth auger)	1
8980	Shock Spring	1
EA2F	Earth Auger, 2" w/fishtail point	1
EA3F	Earth Auger, 3" w/fishtail point	1
EA4F	Earth Auger, 4" w/fishtail point	1
EA6F	Earth Auger, 6" w/fishtail point	1
EA8F	Earth Auger, 8" w/fishtail point	1
EA10F	Earth Auger, 10" w/fishtail point	1
EB4	Earth Blade, 4" (includes EBOLT & ENUT)	1
EB6	Earth Blade, 6" (includes EBOLT & ENUT)	1
EB6HD	Heavy Duty Earth Blade, 6" (includes EBOLT & ENUT)	1
EB8	Earth Blade, 8" (includes EBOLT & ENUT)	1
EB8HD	Heavy Duty Earth Blade, 8" (includes EBOLT & ENUT)	1
EB10	Earth Blade, 10" (includes EBOLT & ENUT)	1
EB10HD	Heavy Duty Earth Blade, 10" (includes EBOLT & ENUT)	1
EBOLT	Bolt-Hex, 1/4-28 x 5/8", Grade 5 (earth blade to auger)	2
ENUT	Nut-Nyloc, 1/4-28	2
SM	Shock Mechanism (used on 6" or larger earth auger)	1
WF516	Washer-Flat, 5/16"	2

ACCESSORIES

EXT6	Depth Extension, 6"
EXT12	Depth Extension, 12"
EXT18	Depth Extension, 18"



EARTHQUAKE MODEL 9000E PARTS LIST



EARTHQUAKE MODEL 9000E PARTS LIST



MINIMUM ORDER \$10.00

POWERHEAD PARTS

<u>Part #</u>	<u>Description</u>	<u>Qty.</u>
60G70	Toggle Switch	1
90TRAN	Complete Transmission	1
1402	Bolt-SHCS, 5/16-18 x 1-1/4" (mount ring to engine)	4
8912	44T Gear	2
8913	Output Shaft, 7/8"	1
8915	Dowel Pin, 1/4" x 1/2", hardened steel	2
8919	Gasket	1
8922	Ball Bearing	3
8923	Ball Bearing	2
8924	Snap Ring	4
8929	Bolt-SHCS, 1/4-20 x 1-1/2" (gear case bottom to gear case top)	2
8934	Bolt-SHCS, 1/4-20 x 2-1/4" (gear case to ring)	4
8939	Gear Case Bottom	1
9005	Throttle Control Rod	1
9005A	Twist-Throttle Control Rod	1
9010	Handlebar-Foamed	1
9016	Clutch Drum, 3" Threaded	1
9017	12T Pinion Gear, Threaded	1
9025	Centrifugal Clutch Rotor	1
9037	Mount Ring (handlebar to gear case top)	1
9038	Gear Case Top	1
9214A	10T Pinion Gear	1
AV520	Gas Engine	1
GCA1	Gas Cap	1
GT3HP	Gas Tank	1

EARTHAUGER PARTS

<u>Part #</u>	<u>Description</u>	<u>Qty.</u>
60G56	Nut-Hex 2-way reversible locknut, 5/16-18	2
1423	Bolt-HHCS, 5/16-18 x 2", Grade 5 (auger shock spring)	2
1433	Bolt-HHCS, 3/8-16 x 1-1/2" (auger to powerhead)	2
2104	Nut-Hex Locking, 3/8-16	2
8958HD	Fishtail Point (used on 4" or larger earth auger)	1
8970	Fishtail Point (used on 2" & 3" earth auger)	1
8980	Shock Spring	1
EA2F	Earth Auger, 2" w/fishtail point	1
EA3F	Earth Auger, 3" w/fishtail point	1
EA4F	Earth Auger, 4" w/fishtail point	1
EA6F	Earth Auger, 6" w/fishtail point	1
EA8F	Earth Auger, 8" w/fishtail point	1
EA10F	Earth Auger, 10" w/fishtail point	1
EB4	Earth Blade, 4" (includes EBOLT & ENUT)	1
EB6	Earth Blade, 6" (includes EBOLT & ENUT)	1
EB6HD	Heavy Duty Earth Blade, 6" (includes EBOLT & ENUT)	1
EB8	Earth Blade, 8" (includes EBOLT & ENUT)	1
EB8HD	Heavy Duty Earth Blade, 8" (includes EBOLT & ENUT)	1
EB10	Earth Blade, 10" (includes EBOLT & ENUT)	1
EB10HD	Heavy Duty Earth Blade, 10" (includes EBOLT & ENUT)	1
EBOLT	Bolt-Hex, 1/4-28 x 5/8", Grade 5 (earth blade to auger)	2
ENUT	Nut-Nyloc, 1/4-28	2
SM	Shock Mechanism (used on 6" or larger earth auger)	1
WF516	Washer-Flat, 5/16"	2

ACCESSORIES

EXT6	Depth Extension, 6"
EXT12	Depth Extension, 12"
EXT18	Depth Extension, 18"



Ardisam, Inc.
1690 Elm Street, Cumberland, Wisconsin 54829
(715)822-2415 • Fax (715)822-4180
1-800-345-6007
www.ardisam.com