

VIPER[®]

ENGINES

Illustrated Parts Breakdown

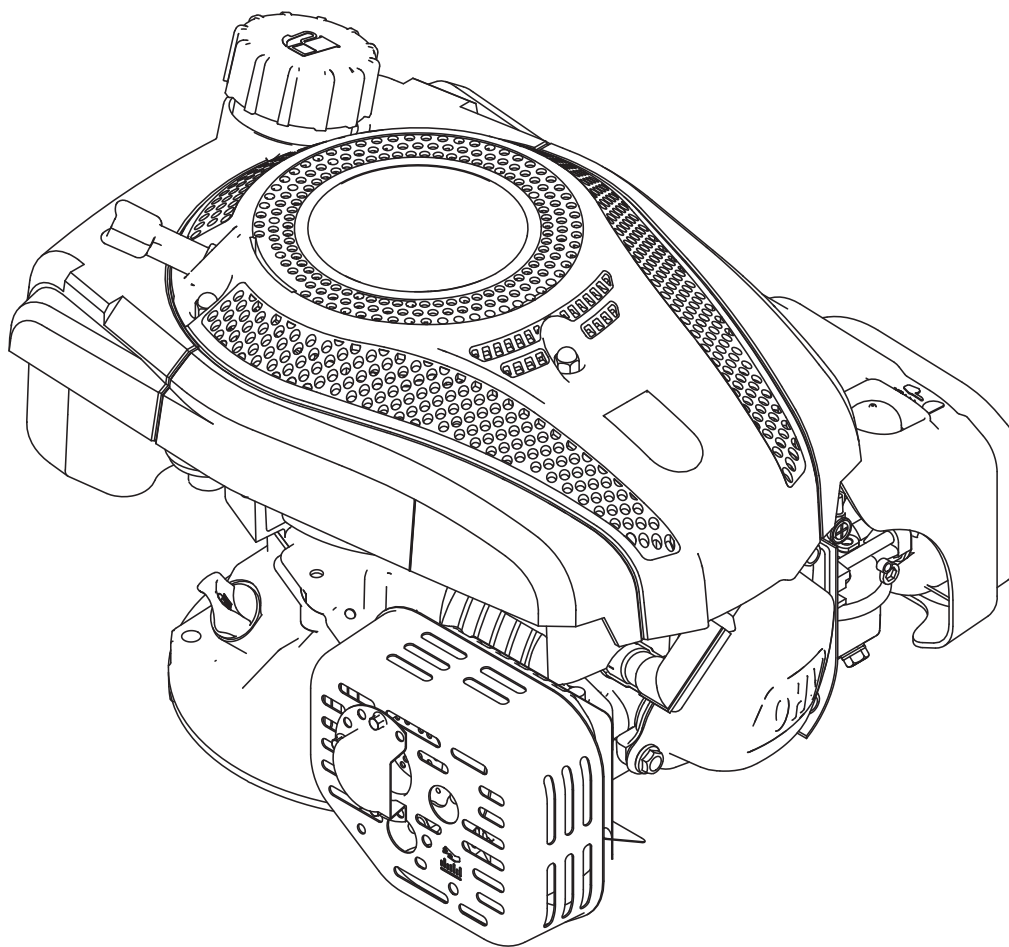
150CC 4-CYCLE
Viper Engine

Model #: 27787

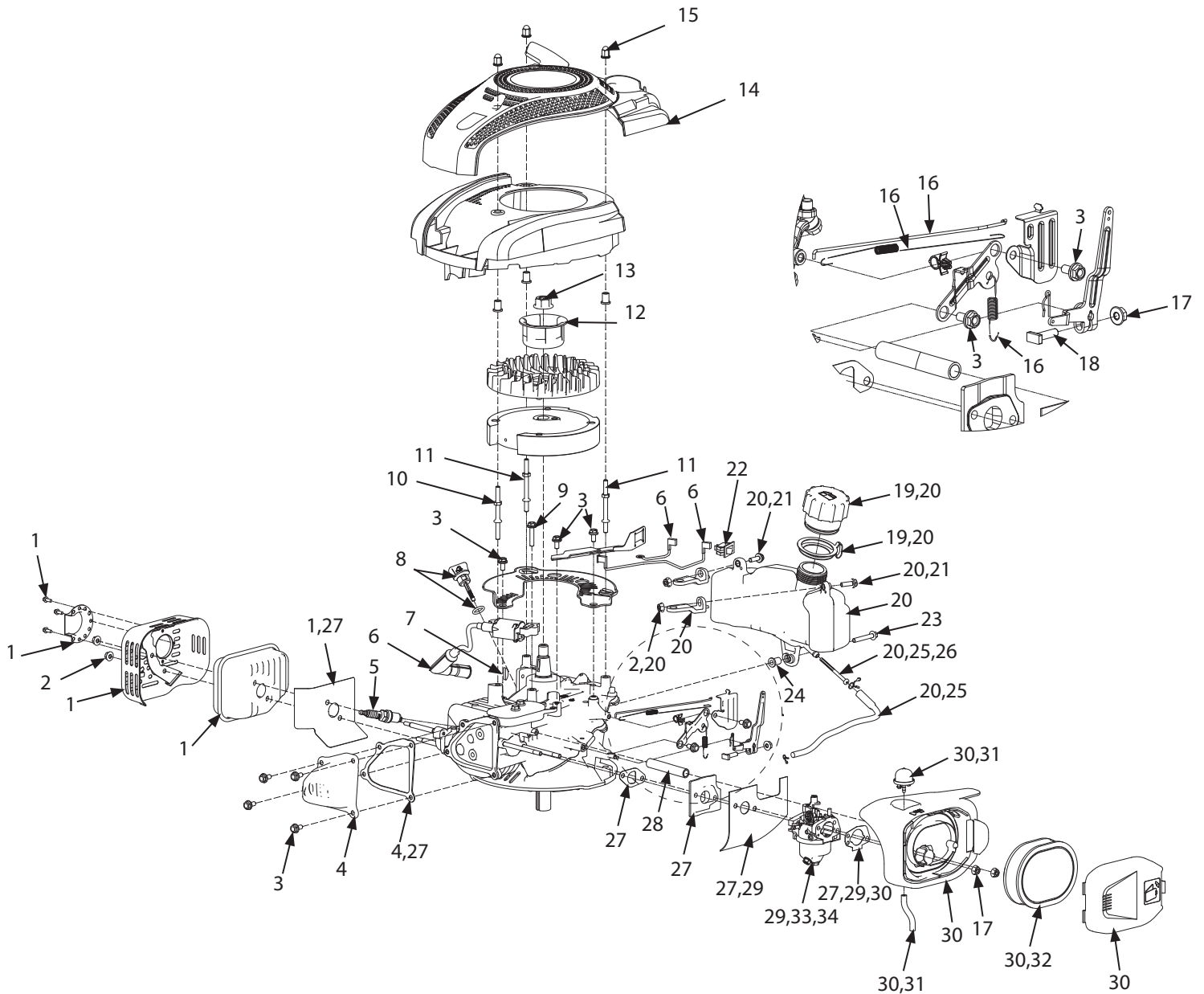
ENGLISH

FRENCH

S/N



ILLUSTRATED PARTS BREAKDOWN



REF NO.	PART NO.	DESCRIPTION	QTY
N.º DE ELEMEN-TO	N.º DE PIEZA	DESCRIPCIÓN	CANT.
1	29892	MUFFLER SHROUD AND GASKET	1
2	400016	NUT M6	4
3	3231	BOLT M6 X 12 MM	9
4	29983	VALVE COVER AND GASKET	1
5	29990	SPARK PLUG TORCH K7RTC	1
6	29868	IGNITION COIL AND IGNITION WIRES	1
7	30243	KEY WOODRUFF 4.0 X 5.6 X 25.4 MM	1
8	29896	DIPSTICK	1
9	30148	BOLT M6 X 30 MM	1
10	29905	STUD M6 X 24, M6 X 27, 82.5 MM	1
11	29904	STUD M6 X 22.5, M6 X 17, 82.5 MM	2
12	30147	STARTER CUP	1
13	64274	NUT M14	1
14	29902	RECOIL AND SHROUD	1
15	29989	NUT ACORN M6 X 12 MM	3
16	29987	THROTTLE CONTROL SPRINGS AND ROD	1
17	300492	NUT M6	3
18	29993	BOLT M6 X 21 MMT-HEAD	1
19	29888	FUEL CAP WITH TETHER	1
20	29899	FUEL TANK	1
21	30240	BOLT M6 X 18 MM	2
22	29893	IGNITION ROCKER SWITCH	1
23	400021	BOLT M6 X 40 MM	1
24	29609	FUEL TANK MOUNT SPACER	1
25	29897	FUEL LINE AND FUEL FILTER	1
26	11008	FUEL FILTER	1
27	29910	ENGINE GASKETS	1
28	29867	BREATHER HOSE	1
29	29992	CARBURETOR	1
30	29981	AIR FILTER	1
31	29995	PRIMER BULB AND HOSE	1
32	29914	AIR FILTER ELEMENT	1
33	30279	ALTITUDE KIT 3,000-6,000 FT	1
34	30280	ALTITUDE KIT 6,000-8,000 FT	1

VIPER[®]

ENGINES

ARDISAM, INC.
1160 Eighth Avenue
PO Box 755
Cumberland, WI 54829

Phone: (800) 345-6007
Fax: (715) 822-2124
www.Ardisam.com