



Groundbreaking Power Equipment

Illustrated Parts Breakdown  
Illustration des pièces détachées

**Earthquake®**

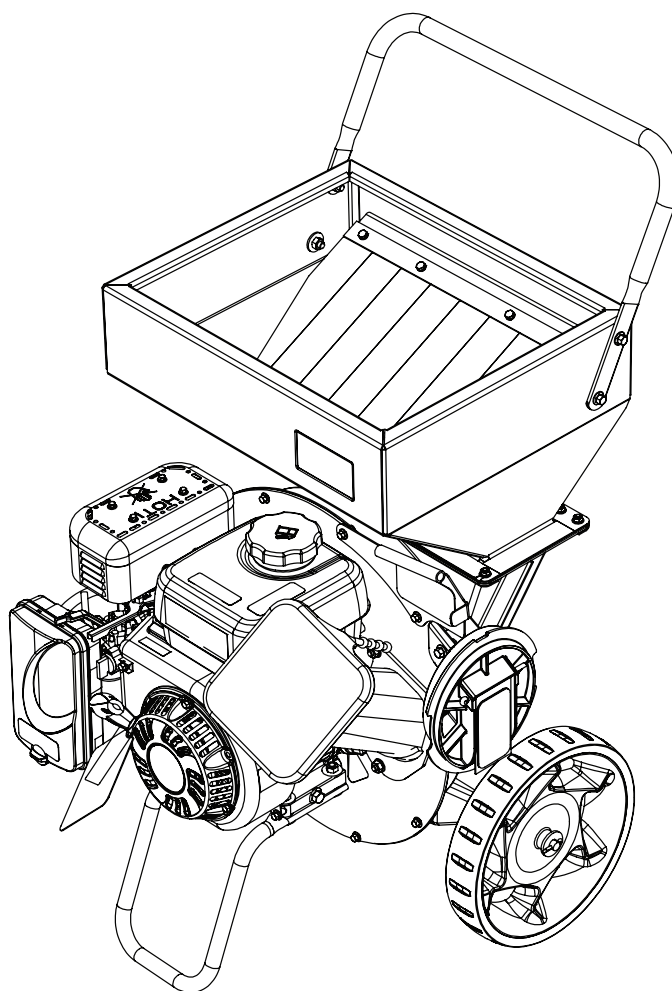
Viper® 212cc Chipper Shredder

**Model Number, Numéros de modèle :  
23666**

ENGLISH

FRANÇAIS

S/N



Get parts or technical assistance online at  
**[www.getearthquake.com](http://www.getearthquake.com) or call (800) 345-6007**

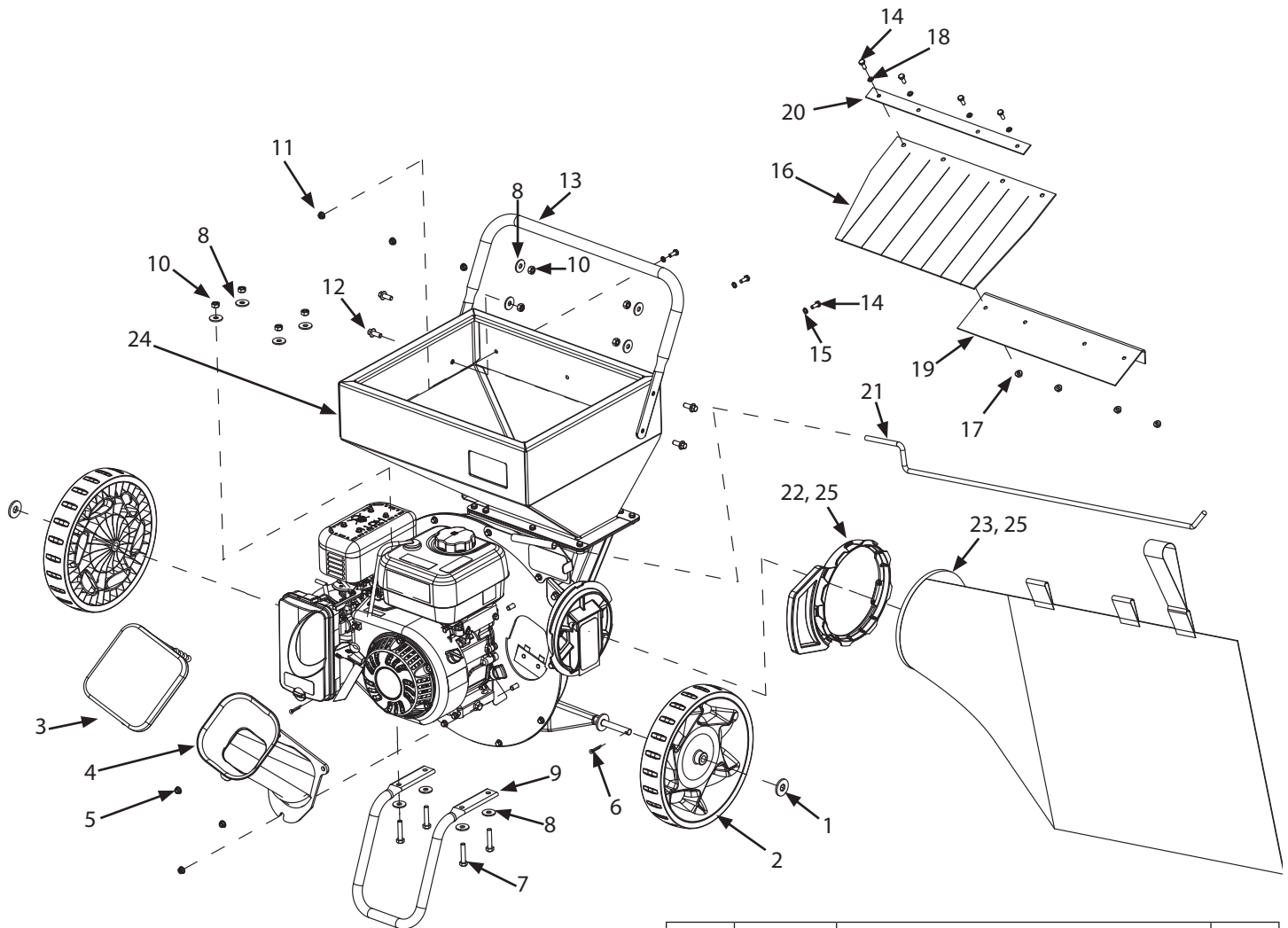
Pièces détachées et assistance technique en ligne à  
**[www.getearthquake.com](http://www.getearthquake.com) ou composer le (800) 345-6007**

© 2020 Ardisam  
All Rights Reserved  
Tous droits réservés  
P/N: 37268  
ECN: 12913  
REV 1: 07/10/2020



THIS INSTRUCTION BOOKLET CONTAINS IMPORTANT SAFETY INFORMATION. PLEASE READ AND KEEP FOR FUTURE REFERENCE.  
CE LIVRET D'INSTRUCTIONS CONTIENT DES INFORMATIONS IMPORTANTES SUR LA SÉCURITÉ. VEUILLEZ LE LIRE ET LE CONSERVER POUR TOUTE CONSULTATION EXTÉRIEURE.

## ILLUSTRATED PARTS BREAKDOWN / ILLUSTRATION DES PIÈCES DÉTACHÉES - Main Explosion

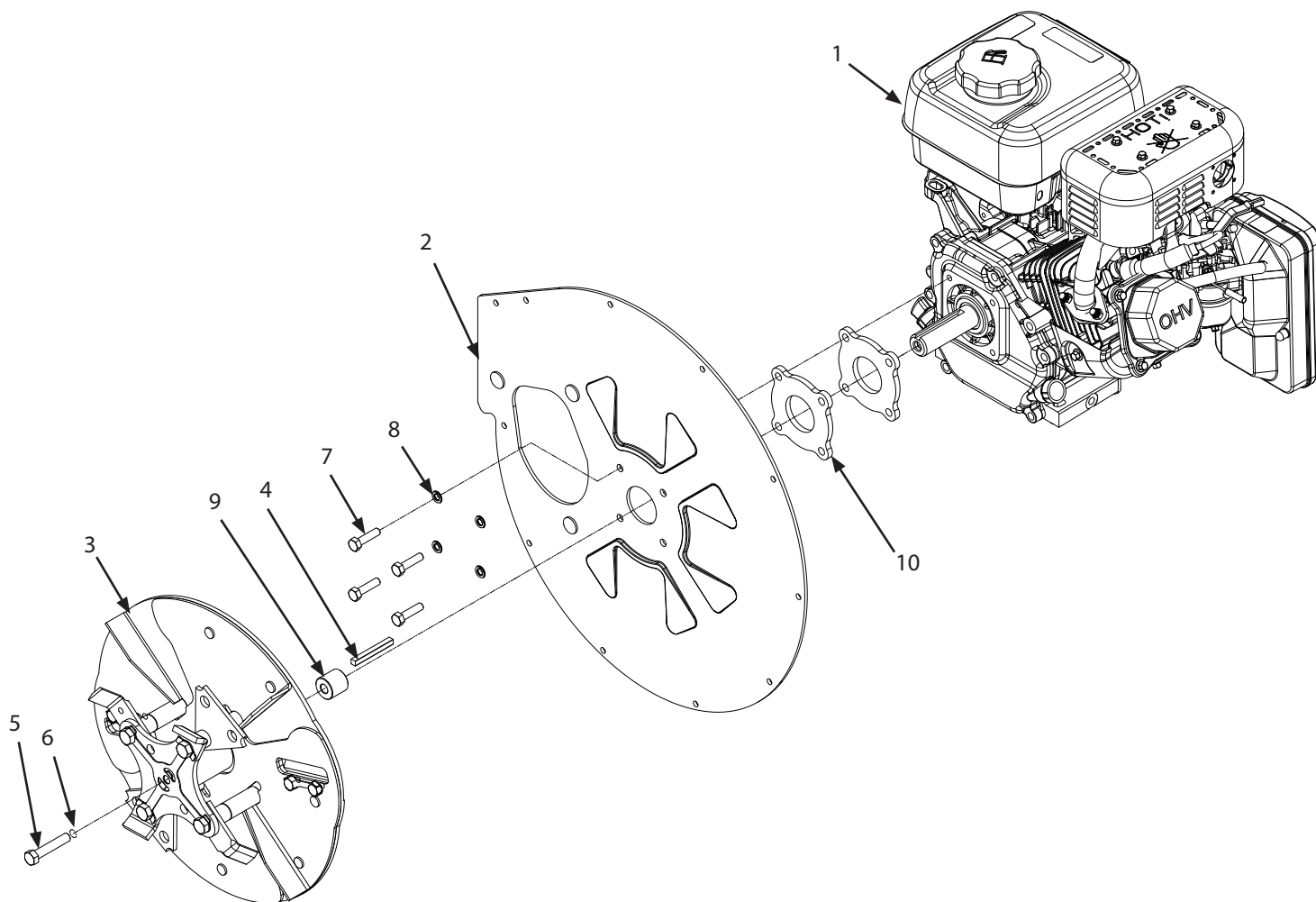


| REF. /<br>REP. | PART NO.<br>/ N° RÉF. | DESCRIPTION                        | QTY.<br>/ QTÉ |
|----------------|-----------------------|------------------------------------|---------------|
| 1              | 50175                 | WASHER 12MM                        | 2             |
| 2              | 35618                 | CHIPPER WHEEL                      | 2             |
| 3              | 23681                 | CONE COVER                         | 1             |
| 4              | 35621                 | WELDMENT CHIPPER CONE              | 1             |
| 5              | 16400                 | NUT M8 X 1.25 HSF NYLOC GR8.8 ZN   | 3             |
| 6              | 22097                 | COTTER PIN 2MM X 50MM              | 2             |
| 7              | 12770                 | BOLT M8 X 1.25 X 40 MM HH GR8.8 ZN | 4             |
| 8              | 20143                 | WASHER M8 X 16 X 1.5 MM FLAT ZN    | 12            |
| 9              | 23680                 | KICKSTAND CHIPPER                  | 1             |
| 10             | W1256V0900            | NUT M8 X 1.25 MM HNYLK GR8.8 ZN    | 8             |
| 11             | 14109                 | NUT M6 X 1.0 MM HHFNYLK GR8.8 ZN   | 3             |
| 12             | 20818                 | BOLT M8 X 1.25 X 16 SFH GR8.8 ZN   | 4             |

| REF. /<br>REP. | PART NO.<br>/ N° RÉF. | DESCRIPTION                         | QTY.<br>/ QTÉ |
|----------------|-----------------------|-------------------------------------|---------------|
| 13             | 23678                 | HANDLEBAR CHIPPER                   | 1             |
| 14             | 67089                 | BOLT M6 X 1.0 X 16 MM HH GR8.8 ZN   | 7             |
| 15             | 18130                 | WASHER M6 X 1.5 MM SPRLK ZN         | 3             |
| 16             | 1095100               | GUARD HOPPER 10.25 X 1.00 X 0.10 IN | 1             |
| 17             | 14109                 | NUT M6 X 1.0 MM HFNLYK CL8 ZN       | 4             |
| 18             | 18130                 | WASHER M6 X 1.5 MM SPRLK ZN         | 4             |
| 19             | 27717                 | FLANGE HOPPER GUARD                 | 1             |
| 20             | 22110                 | RETAINER HOPPER GUARD               | 1             |
| 21             | 36860                 | ROD BAG SUPPORT                     | 1             |
| 22             | 35630                 | CONNECTOR BAG                       | 1             |
| 23             | 23679                 | BAG CHIPPER 840MM X 560MM           | 1             |
| 24*            | ---                   | CHIPPER ASSEMBLY                    | ---           |
| 25             | 36634                 | ASSEMBLY BAG CONNECTOR KIT          | 1             |

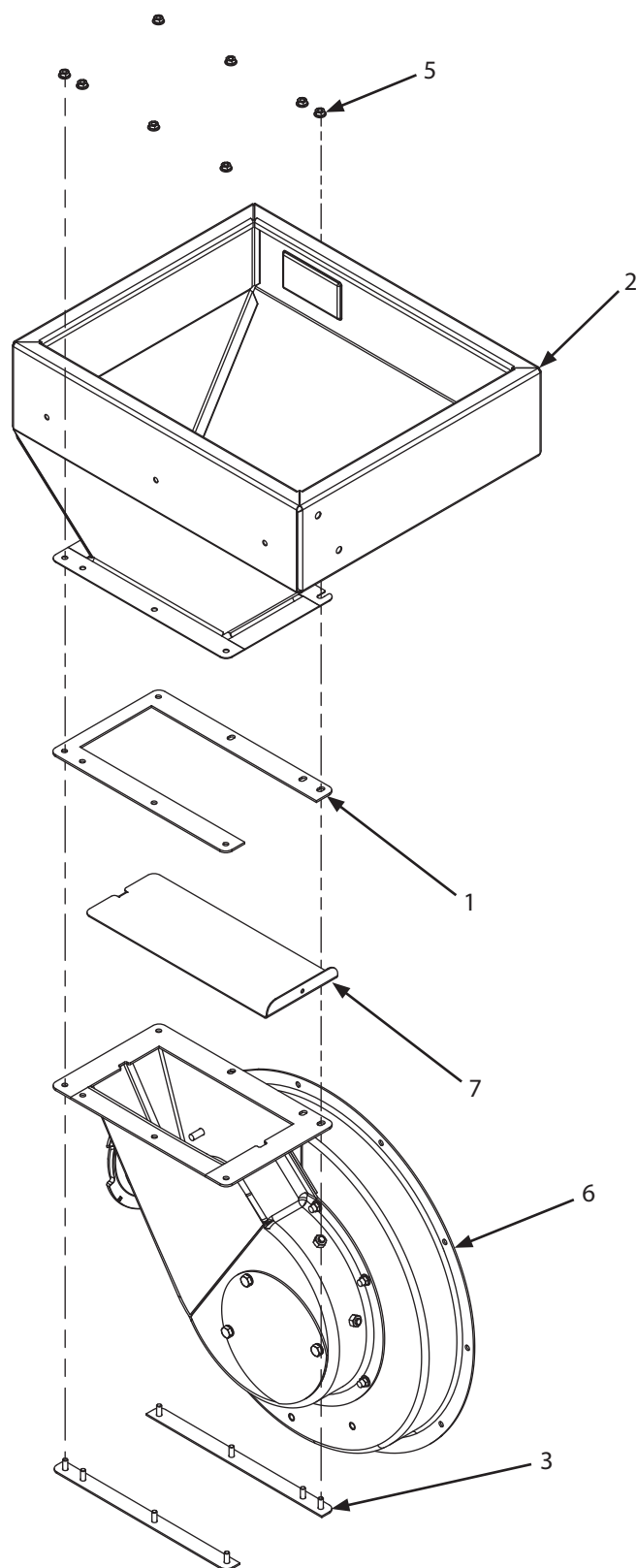
\* Item shown for illustrative purposes only.

## ILLUSTRATED PARTS BREAKDOWN / ILLUSTRATION DES PIÈCES DÉTACHÉES - Engine and Rotor Assembly



| REF. /<br>REP. | PART NO.<br>/ N° RÉF. | DESCRIPTION                               | QTY.<br>/ QTÉ |
|----------------|-----------------------|---|---------------|
| 1              | 24129                 | ENGINE HRZ 1 IN SHAFT 212CC VPR R210 EPA3 | 1             |
| 2              | 23685                 | WELDMENT PLATE ENGINE                     | 1             |
| 3              | 21959                 | ASSEMBLY ROTOR HAMMERS AND KNIVES METRIC  | 1             |
| 4              | 905100                | KEY 1/4 IN X 2-1/4 IN LG                  | 1             |
| 5              | 30608                 | BOLT 3/8-24 X 2 IN HH GR8 F-T             | 1             |
| 6              | 1916965               | WASHER LOCK SPRING 3/8 IN                 | 1             |
| 7              | 813                   | BOLT 5/16-24 X 1-1/4 HH GR8 ZN            | 4             |
| 8              | 21640                 | WASHER M8 SPRLK ZN                        | 4             |
| 9              | 1713200               | SPACER 0.41 ID X 1.00 OD X .95 LONG IN    | 1             |
| 10             | 22848                 | SPACER ENGINE R210                        | 2             |

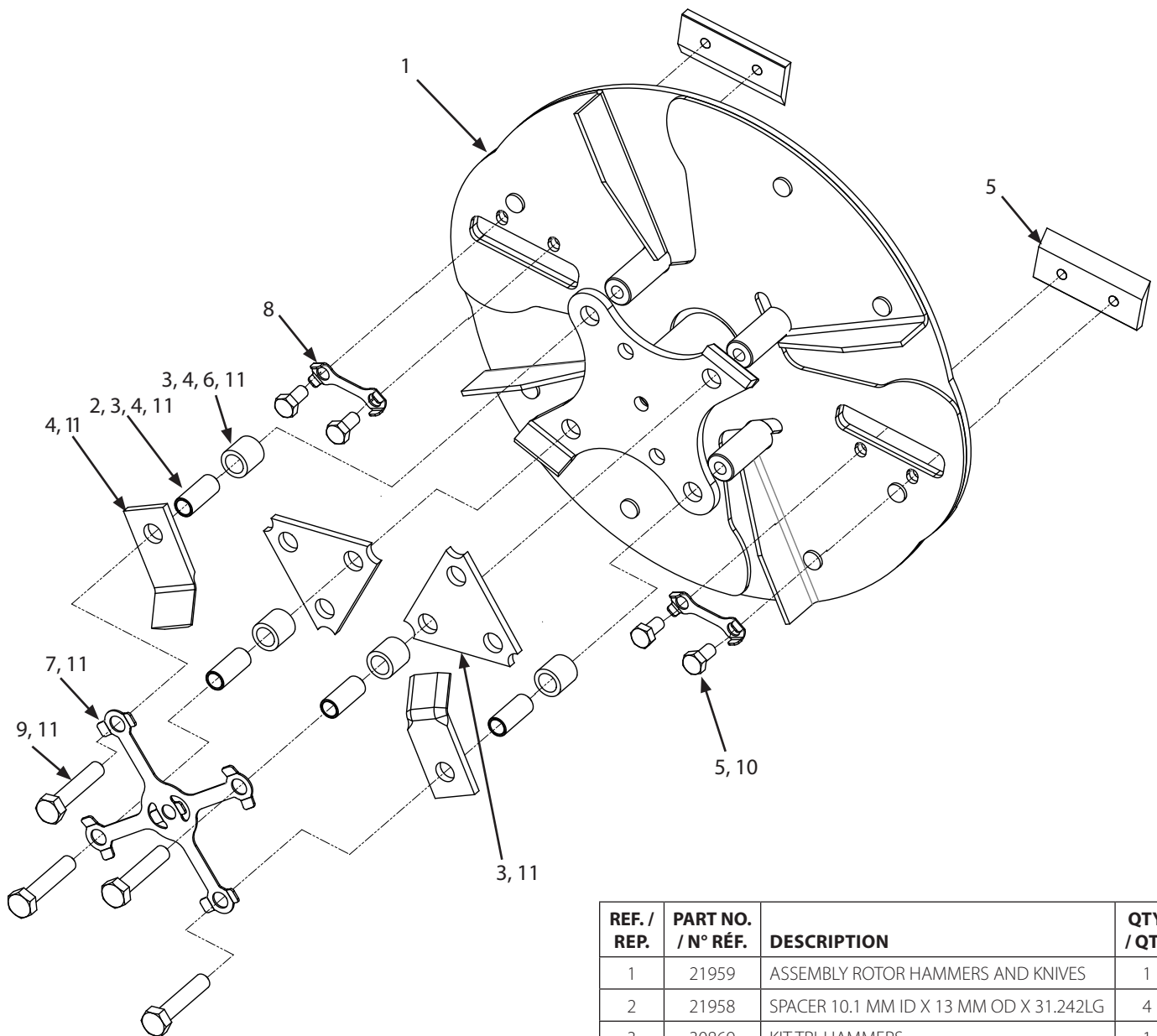
**ILLUSTRATED PARTS BREAKDOWN / ILLUSTRATION DES PIÈCES DÉTACHÉES - Hopper Group**



| REF. /<br>REP. | PART NO.<br>/ N° RÉF. | DESCRIPTION                | QTY.<br>/ QTÉ |
|----------------|-----------------------|----------------------------|---------------|
| 1              | 27774                 | SHIM                       | 1             |
| 2              | 37271                 | WELDMENT CHIPPER HOPPER    | 1             |
| 3              | 36446                 | STUD PLATE                 | 2             |
| 5              | 14109                 | NUT M6 X 1.0 MM HFNYLK CL8 | 8             |
| 6*             | ---                   | CHIPPER HOUSING GROUP      | ---           |
| 7              | 23687                 | DAMPER                     | 1             |

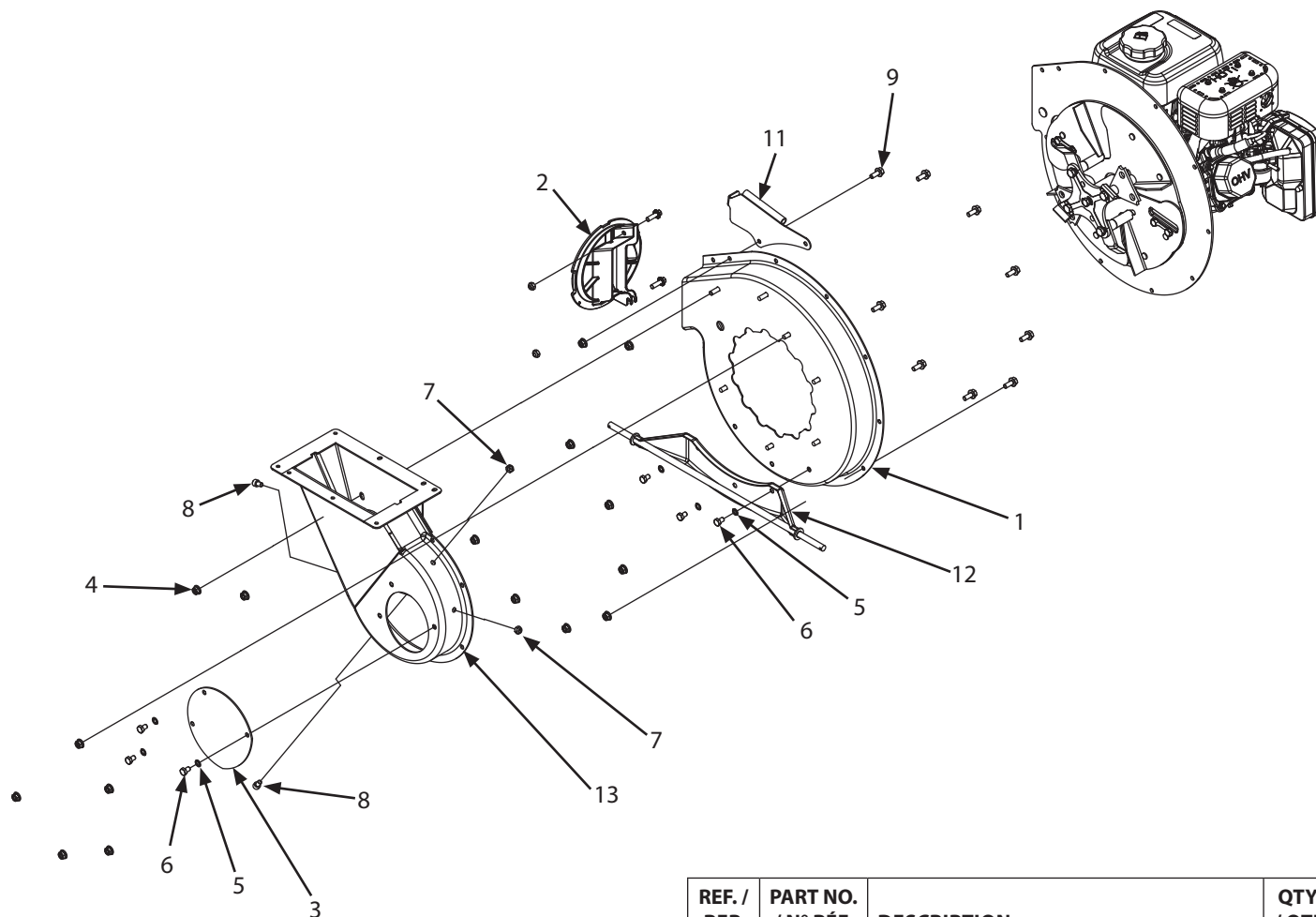
*\* Item shown for illustrative purposes only.*

**ILLUSTRATED PARTS BREAKDOWN / ILLUSTRATION DES PIÈCES DÉTACHÉES - Rotor Group Assembly**



| REF. /<br>REP. | PART NO.<br>/ N° RÉF. | DESCRIPTION                             | QTY.<br>/ QTÉ |
|----------------|-----------------------|---|---------------|
| 1              | 21959                 | ASSEMBLY ROTOR HAMMERS AND KNIVES       | 1             |
| 2              | 21958                 | SPACER 10.1 MM ID X 13 MM OD X 31.242LG | 4             |
| 3              | 30869                 | KIT TRI-HAMMERS                         | 1             |
| 4              | 30868                 | KIT J-HAMMERS                           | 1             |
| 5              | 30867                 | KIT LOCKING PLATE                       | 1             |
| 6              | 22166                 | SPACER 13 MM ID X 19 MM OD X 18.745 LG  | 4             |
| 7              | 30507                 | PLATE LOCKING ROTOR                     | 1             |
| 8              | 30508                 | PLATE LOCKING KNIVES                    | 2             |
| 9              | 30583                 | BOLT M10 X 1.5 X 50 MM HH GR10.9 F-T    | 4             |
| 10             | 30584                 | BOLT M8 X 1.25 X 16 MM HH GR10.9 F-T    | 4             |
| 11             | 30940                 | KIT ROTOR COMPLETE                      | 1             |

## ILLUSTRATED PARTS BREAKDOWN: Chipper Housing Assembly



| REF. /<br>REP. | PART NO.<br>/ N° RÉF. | DESCRIPTION                               | QTY.<br>/ QTÉ |
|----------------|-----------------------|---|---------------|
| 1              | 23683                 | WELDMENT HOUSING ROTOR                    | 1             |
| 2              | 21936                 | ASSEMBLY BAG CONNECTOR KIT                | 1             |
| 3              | 23684                 | COVER ROTOR HOUSING                       | 1             |
| 4              | 34553                 | NUT M8                                    | 16            |
| 5              | 21640                 | WASHER M8 SPRING LOCK ZINC                | 6             |
| 6              | 3241                  | BOLT M8 X 1.25 X 12 MM HHCS GR8.8 ZN      | 6             |
| 7              | W1265V0900            | NUT M8 X 1.25 MM HNYLK GR8.8 ZN           | 2             |
| 8              | 23956                 | BOLT M8 X 1.25 X 12 MM SHCS GR12.9 ZN F-T | 2             |
| 9              | 16880                 | BOLT M8 X 1.25 X 25 MM SFH GR8.8 ZN F-T   | 2             |
| 11             | 35636                 | WELDMENT BAG SUPPORT                      | 1             |
| 12             | 35626                 | WELDMENT AXLE MOUNT CHIPPER               | 1             |
| 13             | 23682                 | WELDMENT CHIPPER BACK COVER               | 1             |
| 14*            | ---                   | ENGINE AND ROTOR GROUP                    | ---           |

\* Item shown for illustrative purposes only.





GROUNDBREAKING POWER EQUIPMENT

1160 Eighth Avenue  
PO Box 666  
Cumberland, WI 54829

Phone, Téléphone : (800) 345-6007  
Fax, Télécopieur : (715) 822-2124  
[www.getearthquake.com](http://www.getearthquake.com)