

VIPER[®]

ENGINES

Illustrated Parts Breakdown

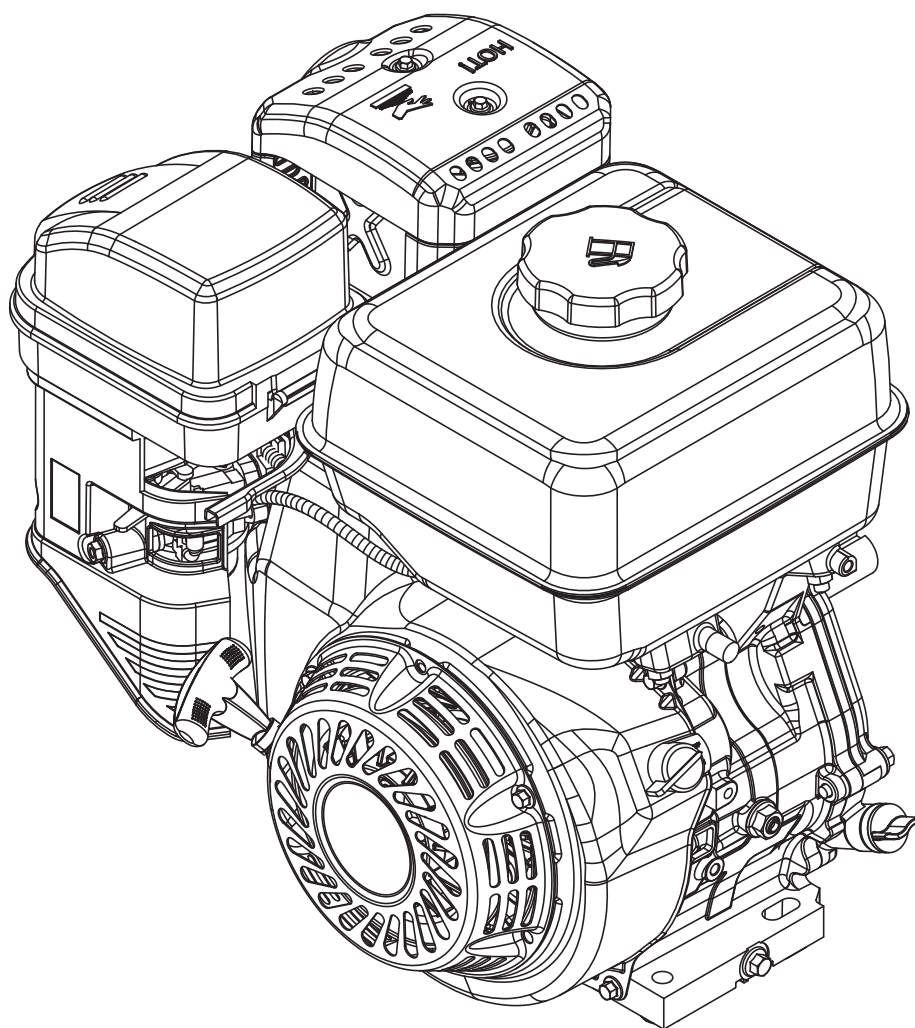
301CC 4-CYCLE
Viper Engine

Model #: 25537

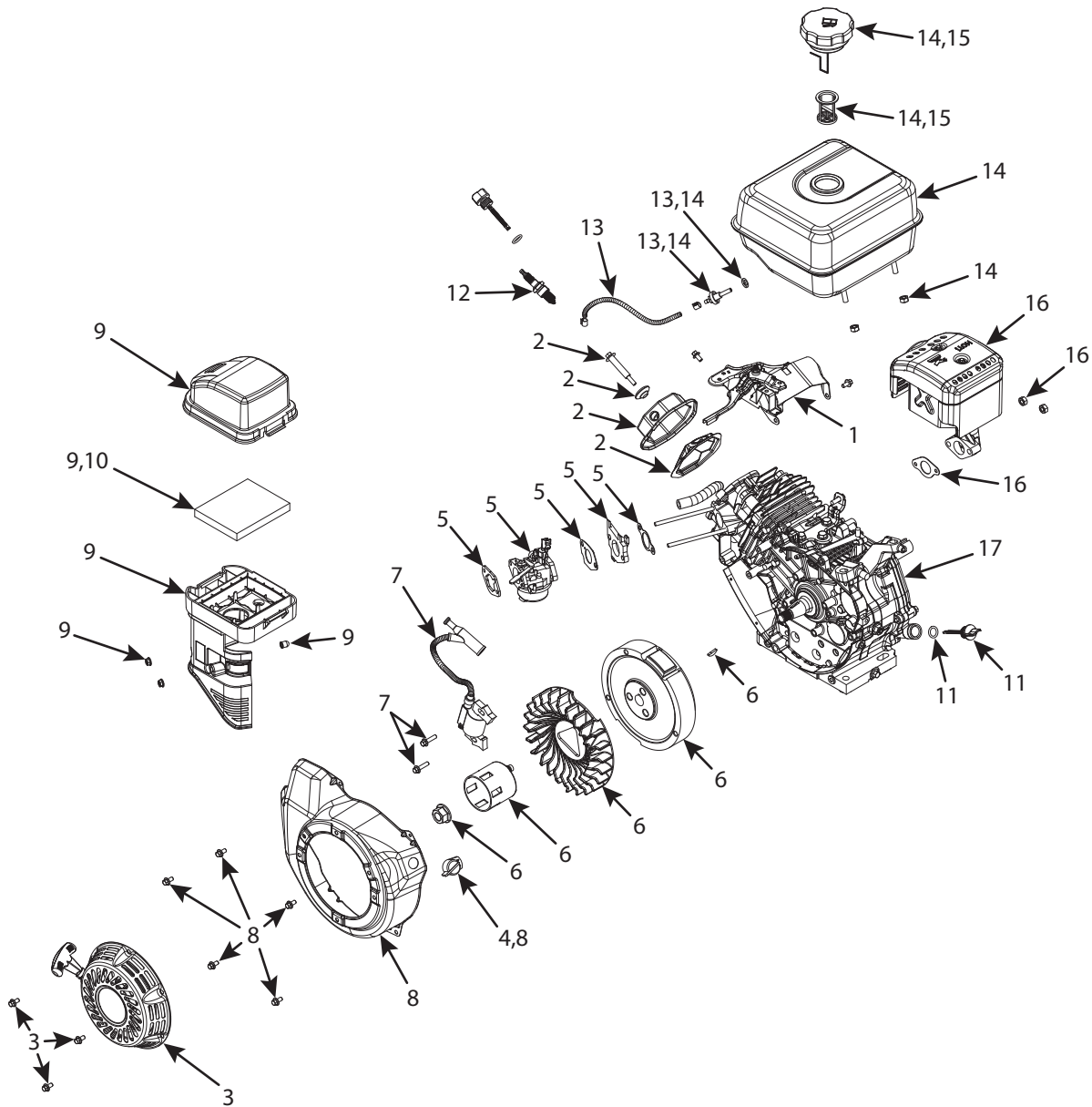
ENGLISH

FRENCH

S/N



ILLUSTRATED PARTS BREAKDOWN



REF NO.	PART NO.	DESCRIPTION	QTY
N.º DE ELEMEN-TO	N.º DE PIEZA	DESCRIPCIÓN	CANT.
1	24226	THROTTLE ASSEMBLY KIT R300	1
2	24227	CYLINDER HEAD COVER KIT R300	1
3	24228	RECOIL STARTER ASSEMBLY R300	1
4	67069	ENGINE STOP SWITCH ASSEMBLY	1
5	24230	CARBURETOR REPLACEMENT KIT R300	1
6	24231	FLY WHEEL AND BLOWER FAN KIT R300	1
7	26768	IGNITION COIL & HARDWARE KIT R300	1
8	24233	BLOWER HOUSING KIT R300	1
9	24234	AIR CLEANER ASSEMBLY	1
10	24259	FILTER AIR CLEANER R300	1
11	24236	ASSEMBLY DIPSTICK R300	1
12	21277	SPARK PLUG F6RTC	1
13	24237	FUEL LINE KIT AND CONNECTOR FILTER R300	1
14	26764	FUEL TANK ASSEMBLY KIT R300	1
15	25568	FUEL TANK CAP KIT	1
16	24242	MUFFLER COMPLETE KIT R300	1
17	--	SHORT BLOCK R300 (REFERENCE ONLY)	1
18	24451	ALTITUDE KIT 3,000-6,000 FT	1
19	24452	ALTITUDE KIT 6,000-8,000 FT	1

VIPER[®]

ENGINES

ARDISAM, INC.
1160 Eighth Avenue
PO Box 755
Cumberland, WI 54829

Phone: (800) 345-6007
Fax: (715) 822-2124
www.Ardisam.com