

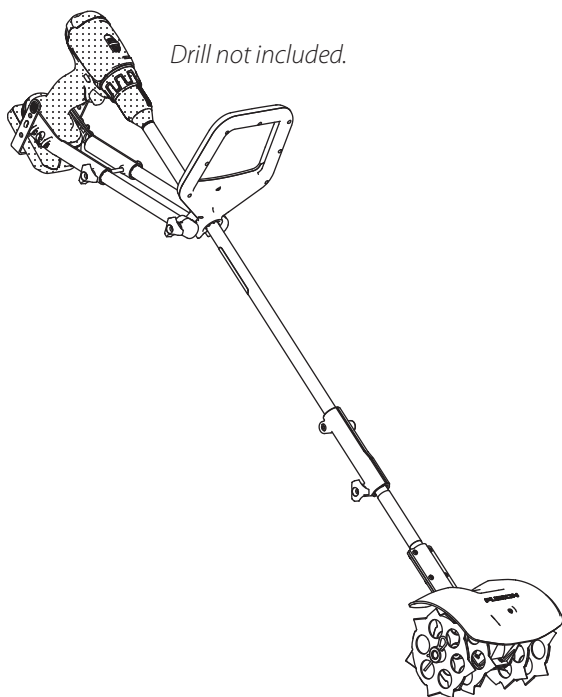
FUSION™

DRILL-POWERED TOOLS

Operator Manual

Fusion™
Drill-Powered Cultivator

Model Number:
33061



Get parts or technical assistance online at
www.fusiondrillpowered.com
or call (800) 345-6007

© 2020 Ardisam
All Rights Reserved
P/N: 33299
ECN: 12860
REV 1: 03/30/2020



THIS INSTRUCTION BOOKLET CONTAINS IMPORTANT SAFETY INFORMATION.
PLEASE READ AND KEEP FOR FUTURE REFERENCE.



ACTIVATE YOUR WARRANTY BEFORE USE

All products must be registered within 30 days from the date of purchase in order to be covered under warranty. You can register your warranty online by visiting www.fusiondrillpowered.com, or by scanning the QR code above. You may also call our Customer Service department at (800) 345-6007 Mondays through Fridays from 8 a.m. to 5 p.m. CST. For more information regarding Warranty and Registration please review the Warranty and Registration terms and conditions expressed in this manual.

TABLE OF CONTENTS

Introduction/Contents	2-3
Warnings and Safety Precautions.	3-7
Features and Specifications	8-9
Assembly.	9-14
Operation	12-13
Maintenance and Storage	14
Troubleshooting and Repair.	14-15
Illustrated Parts Breakdown	16-17
Warranty	18-19

INTRODUCTION

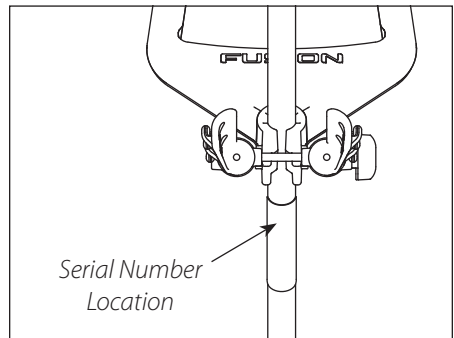
Thank you for purchasing your product from Fusion™. We have worked to ensure that this product meets the highest

standards for usability and durability. With proper care, your product will provide many years of service.

Please read this entire manual before installation and use.

Fusion™ reserves the right to change, alter or improve the product and this document at any time without prior notice. Due to continuous product improvements, product images may not be exact. Some assembly may be required.

Read and keep this manual for future reference. This manual contains important information regarding safety, assembly, operation and maintenance. The owner must be certain that all the product information is included with the unit. This information includes the manual, the replacement parts and the warranties. This information must be included



Serial Number

Date of Purchase

to make sure state laws and other laws are followed. All persons to whom rent/loan this unit must have access to and understand this information. This manual should remain with the product even if it is resold.

WARNINGS & SAFETY PRECAUTIONS

OWNER'S RESPONSIBILITY

Accurate assembly and safe and effective use of the tool is the owner's responsibility.

- Read and follow all safety instructions.
- Carefully follow all assembly instructions.
- Ensure that anyone who uses the tool is familiar with all safety precautions.

SPECIAL MESSAGES

Your manual contains special messages to bring attention to potential safety concerns, tool damage as well as helpful operating and servicing information. Please read all the information carefully to avoid injury and tool damage.

NOTE: General information is given throughout the manual that may help the operator in the operation or set-up of the tool.

▲ This symbol points out important safety instructions which if not followed could endanger your personal safety. Read and follow all instructions in this manual before attempting to operate this equipment.

BEFORE OPERATING EQUIPMENT:

PLEASE READ THIS SECTION CAREFULLY.

Read entire operating and set-up instructions for this product. Failure to follow instructions could result in serious injury or death. Operate the tool according to the safety instructions outlined here and inserted throughout the text. Anyone who uses this tool must read the instructions and be familiar with its operation.

INTENDED USE / FORESEEABLE MISUSE

IMPORTANT: This is a drill-powered rotary tiller cultivator that works the soil by means of rotating tines. It is pedestrian-controlled, but not self-propelled, using a cordless electric drill to power the tines. It shall not be used for any other purpose.

! DANGER



**KEEP AWAY FROM ROTATING TINES.
ROTATING TINES WILL CAUSE INJURY.**

NOTICE

NOTICE INDICATES YOUR TOOL CAN BE DAMAGED IF THE SAFETY INSTRUCTIONS THAT FOLLOW THIS SIGNAL WORD ARE NOT OBEYED.

IMPORTANT

IMPORTANT INDICATES HELPFUL INFORMATION FOR PROPER ASSEMBLY, OPERATION OR SET-UP OF YOUR TOOL.

! CAUTION

⚠ CAUTION INDICATES A HAZARD WHICH, IF NOT AVOIDED, COULD RESULT IN PERSONAL INJURY AND/OR PROPERTY DAMAGE.

! WARNING

⚠ WARNING INDICATES A HAZARD WHICH, IF NOT AVOIDED, COULD RESULT IN DEATH OR SERIOUS INJURY AND/OR PROPERTY DAMAGE.

! DANGER

⚠ DANGER INDICATES A HAZARD WHICH, IF NOT AVOIDED, CERTAINLY WILL RESULT IN DEATH OR SERIOUS INJURY AND/OR PROPERTY DAMAGE.

WARNING

▲ YOU MUST READ, UNDERSTAND AND COMPLY WITH ALL SAFETY AND OPERATING INSTRUCTIONS IN THIS MANUAL BEFORE ATTEMPTING TO SETUP AND OPERATE YOUR TOOL. FAILURE TO COMPLY WITH ALL SAFETY AND OPERATING INSTRUCTIONS CAN RESULT IN LOSS OF TOOL CONTROL, SERIOUS PERSONAL INJURY TO YOU AND/OR BYSTANDERS, AND RISK OF TOOL AND PROPERTY DAMAGE. THE TRIANGLE IN THE TEXT SIGNIFIES IMPORTANT CAUTIONS OR WARNINGS WHICH MUST BE FOLLOWED.

GENERAL SAFETY RULES

- Read, understand, and follow all instructions on the tool and in the manual(s). Be thoroughly familiar with the controls and the proper use of the tool before starting. Know how to stop the tool and disengage the controls quickly.
- Use this tool for its intended purpose only.
- Familiarize yourself with all of the safety and operating decals on this tool and on any of its attachments or accessories.
- Do not put hands or feet near or under rotating parts.
- Only allow responsible individuals who are familiar with the instructions to operate the tool. Never allow children to operate this tool. Never allow adults to operate the tool without proper instruction.
- Thoroughly inspect the area where the tool is to be used and remove all foreign objects. Your tool can propel small objects at high speed causing personal injury or property damage. Stay away from breakable objects, such as house windows, automobiles, greenhouses, etc.
- Keep the area of operation clear of all persons, particularly small children and pets.
- Do not operate in shorts or open-toed shoes. Wear proper Personal Protective Equipment (PPE) at all times, such as gloves, proper footwear, and eye protection.
- Do not wear loose clothing or jewelry. They can get caught in moving parts. Always keep hands, feet, hair and loose clothing away from any moving parts on the tool.
- Always wear safety goggles or safety glasses with side shields when operating the tool to protect your eyes from foreign objects which can be thrown from the unit.
- Always wear work gloves and sturdy footwear. Wear footwear that will improve footing on slippery surfaces. Leather work shoes or short boots work well for most people. These will protect the operator's ankles and shins from small sticks, splinters, and other debris.

- Do not operate tool when fatigued or under the influence of alcohol, drugs or other medication which can cause drowsiness or affect your ability to operate this tool safely.
- Prolonged exposure to vibration from drill-powered equipment should be avoided. Take intermittent breaks and/or wear work gloves to reduce vibration in the hands.
- Check local regulations for age restrictions on use of this tool.
- If vegetation clogs the tines, stop and remove the drill from the cultivator before removing the vegetation by hand. If necessary, remove the tines to remove vegetation.
- Do not overload the tool capacity by attempting to till too deep at too fast a rate. Attempts to force the tool may result in wrist injury.
- To prevent accidental starting, always disconnect the drill from the tool during storage.
- Do not operate the tool without proper guards or other safety protective devices in place.
- See manufacturer's instructions for proper operation and installation of accessories. Only use accessories approved by the manufacturer.
- Operate only in daylight or good artificial light.
- Never operate tool in wet grass. Always be sure of your footing; keep a firm hold on the handle and walk; never run.
- Stop the drill when crossing gravel drives, walks, or roads.
- Watch for traffic when operating near, or when crossing roads.
- If the tool should start to vibrate abnormally, stop the drill and lock or disconnect its power source. Check immediately for cause. Vibration is generally a warning of trouble. If the noise or vibrations of the tool increase, stop immediately and perform an inspection.
- After striking a foreign object, stop the drill and lock or disconnect its power source. Inspect the cultivator for damage. If damaged, repair before starting and operating the tool.
- Never leave the cultivator unattended when the drill is attached. Lock or disconnect the drill's power source.
- Regularly inspect the cultivator. Make sure parts are not bent, damaged or loose.
- Do not cultivate above underground utilities, including water lines, gas lines, electric cables, or pipes. Do not operate the tool on terrain/soil with large rocks and foreign objects which can damage the equipment.
- If an object becomes lodged in the tines, stop and remove the drill from the cultivator before attempting to remove the foreign object.

DRILL-SPECIFIC SAFETY RULES

- Never set drill and battery in standing water or wet soil.
- Do not run the drill in reverse while the tool is contacting the ground. Doing so

may cause loss of control.

- Always run the drill on its lowest speed and with the clutch torque adjusted to its lowest operable setting. Failure to do so may cause damage to the drill or the tool attachment.
- Ensure that the drill chuck is tight frequently throughout use. If the chuck is not secured, it may slip and cause damage to the unit, drill, or user.
- Always put the drill switch in its locked position and disconnect battery before transporting the tool.

CHILDREN

Tragic accidents can occur if the operator is not alert to the presence of children. Children are often attracted to the equipment and its activity. Never assume that children will remain where you last saw them.

- Keep children out of the working area and under the watchful care of a responsible adult.
- Be alert and turn equipment off if children enter the area.
- Before and while moving backwards, look behind and down for small children.
- Never allow children to operate the equipment.
- Use extra care when approaching blind corners, shrubs, trees, or other objects that may obscure vision.
- Inspect equipment before storage. When not in use, disconnect the drill and store indoors in a dry place locked or otherwise inaccessible to children.

SERVICE

- Always disconnect the drill whenever you leave the equipment, before cleaning, repairing, or inspecting the unit. Never make adjustments or repairs with the drill attached.
- Always wear eye protection when making adjustments or repairs.
- Never tamper with safety devices. Check their proper operation regularly.
- Stop and inspect the equipment if an object is struck. Repair, if necessary, before restarting.
- Clean and replace safety instruction decals as necessary.
- Use only original equipment, accessories, and authorized replacement parts.

SAFETY DECALS AND WARNINGS

Pictured below are safety and hazard symbols on the unit or in this manual. Before you operate your unit, learn and understand the purpose for each symbol.



Dress appropriately and wear sturdy footwear.



Avoid injury from rotating tines.



Wear eye protection at all times.



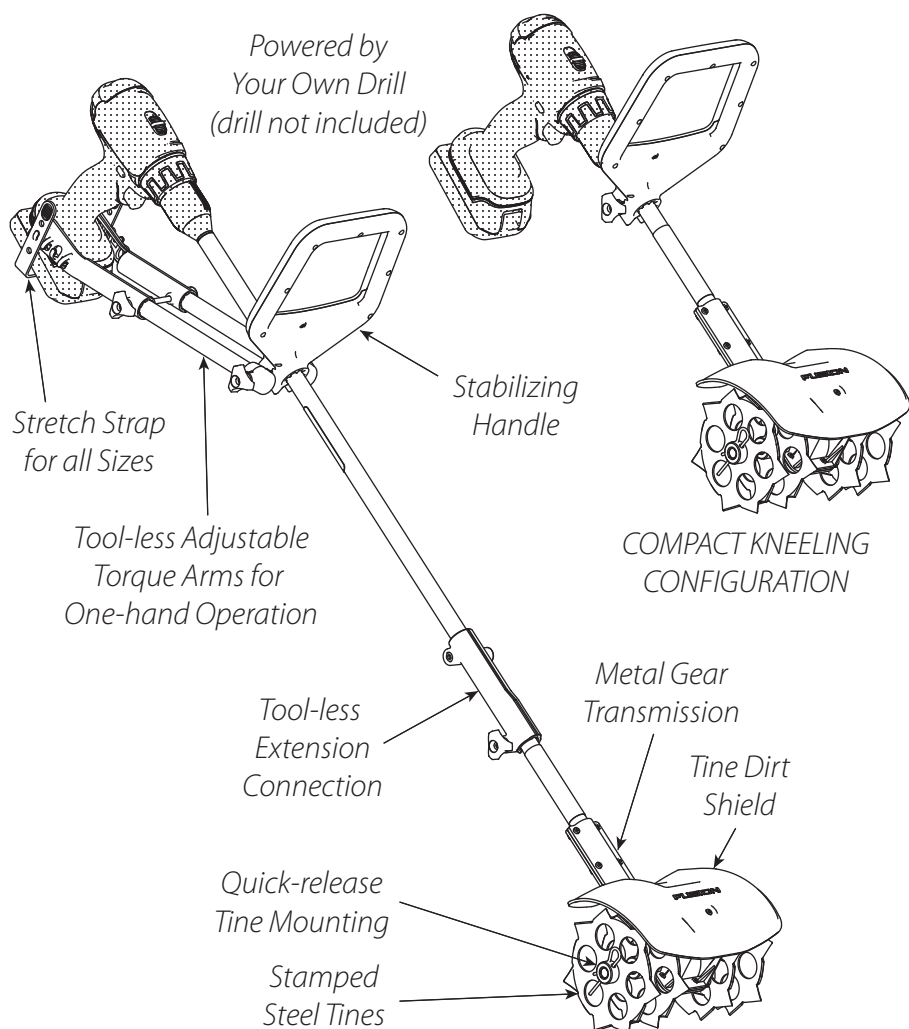
Read and understand the operator manual before running tool.



Do not operate when children or others are around.

FEATURES

Read this operator manual and safety rules before operating your cultivator. Take time to compare the following illustration with the cultivator to familiarize yourself with the product.



SPECIFICATIONS	
TILLING WIDTH	4.25 IN MIN. - 8 IN MAX
TILLING DEPTH	5.5 IN
TRANSMISSION GEAR RATIO	1.2:1
TINE SPEED / ROTATION	VARIABLE / DUAL DIRECTION
INPUT HEX SIZE	8 MM
UNIT WEIGHT (EXCLUDING DRILL)	6.5 LB
UNIT DIMENSIONS	51.3 X 8.7 X 23.6 IN
UNIT DIMENSIONS COMPACT CONFIG.	19.3 X 8.7 X 11.2 IN

MINIMUM DRILL REQUIREMENTS	
TORQUE	300 IN-LB MAX
CHUCK SIZE	3/8 INCH
DRILL DESIGN	BRUSHLESS MOTOR
POWER	18 VOLT
POWER SOURCE	LITHIUM ION BATTERY
BATTERY CAPACITY	3.0 AH

UNPACKING & ASSEMBLY

CARTON CONTENTS

- Manual
- Hardware Parts Bag
 - (A) 4x Bolts
(M4 X 14MM Socket Head)
 - (B) 4x Nuts
(M4 Nylock)
 - (C) Bolt
(M4 X 12MM Socket Head)
 - (D) 3x Hand Knob Nuts
 - (E) 2x Bolts
(M6 X 100MM Hex Head)
 - (F) Spacer (S) *(optional)*
 - (G) L-Wrench
 - (H) Bolt
(M6 X 40MM Hex Head)
 - (I) Rubber Strap
- Transmission (J)
- Tine Shield Bracket (K)
- Tine Shield (L)
- 4x Tines (M) with 4x Hair Pins (N)
- Handle (O)
- Extension (P)
- Torque Arm Assembly Right (Q)
- Torque Arm Assembly Left (R)



WARNING

**▲ USE THE CORRECT PERSONAL PROTECTION.
WEAR SAFETY GLASSES OR EYE SHIELDS WHILE
ASSEMBLING OR OPERATING THE CULTIVATOR.**

ASSEMBLY

1. Remove contents from packaging and open hardware parts bag.
2. Assemble tine shield bracket (K) to transmission (J) with four bolts (A) and four nuts (B) using L-wrench (G), provided in hardware parts bag. **SEE FIGURE 2**
3. Assemble tine shield (L) to transmission assembly with bolt (C) using L-wrench (G). **SEE FIGURE 2**

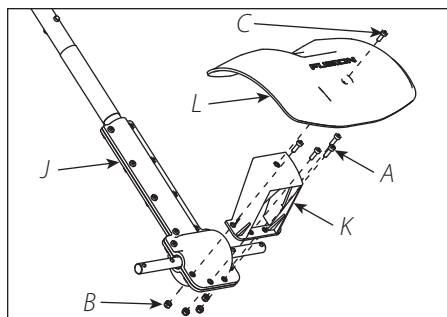


FIGURE 2

4. Assemble four tines (M) to transmission assembly with four hair pins (N). **SEE FIGURE 3**

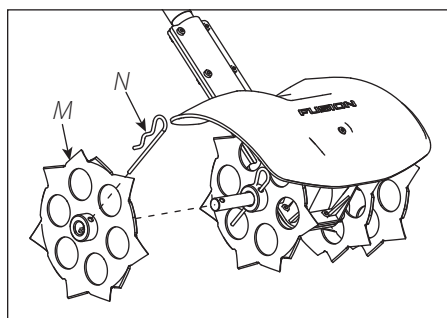
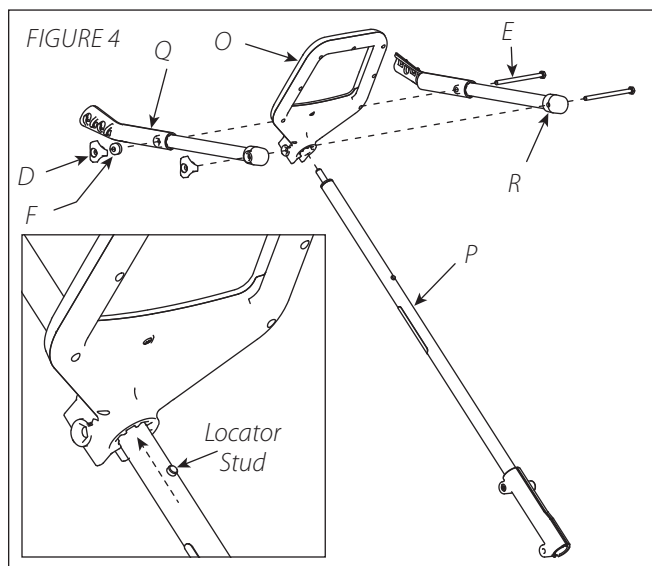


FIGURE 3

5. Assemble handle (O), along with right torque arm assembly (Q) and left torque arm assembly (R) to extension (P) with two bolts (E) and two hand knob nuts (D). Though the handle can be installed in either direction on the extension, it is most common to have the Fusion™ logo facing toward the operator and drill. Be sure the locator stud on the aluminum tube of the extension fits snugly all the way into one of the five pocket positions of the handle depending on the user's desired angle position of the handle. Then tighten the hand knob nut firmly by hand on the bolt to secure the handle, and the left and right torque arm assemblies tightly to the extension. Thread



the other hand knob nut onto the other bolt that passes through the left and right torque arms, but do not tighten.

SEE FIGURE 4

6. Assemble extension assembly to transmission assembly with hand knob nut (D) and bolt (H). Be sure the two locator studs on opposite sides of the aluminum tube of the transmission fit snugly all the way into the two corresponding channels of the extension coupler. It may be necessary to rotate the input hex shaft of the extension by hand slightly in order to mate properly with the hex shaft of the transmission. Tighten the hand knob nut firmly by hand on the bolt to secure the extension assembly tightly to the transmission assembly.

SEE FIGURE 5

DRILL PREPARATION

1. Review the drill manufacturer's instructions information on safety, operation, maintenance, and storage.

2. Ensure the drill meets the minimum requirements.

- 300 in-lb max. torque
- 3/8 inch drill chuck
- Brushless motor design
- 18 Volt or higher
- Lithium Ion Battery (3.0 Ah or higher)

3. Set the drill to the lowest speed setting (Level "1" or "Lo" on most drills).

SEE FIGURE 6 Failure to do so may cause loss of control of the tool.

4. Adjust the clutch setting to "screw", or

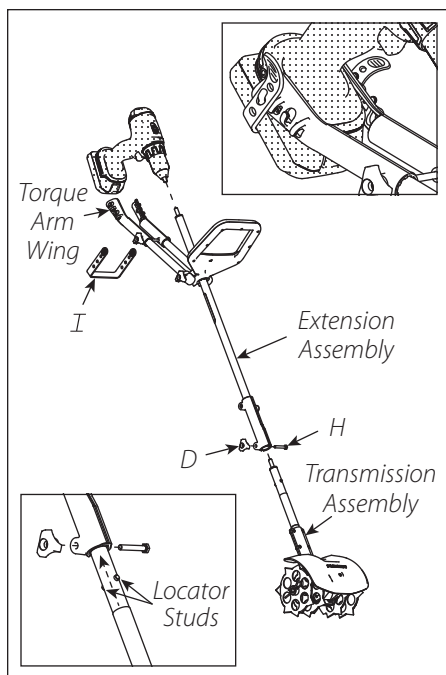


FIGURE 5

the lowest clutch torque setting number that is still operable for cultivating soil. Never set to "drill" or "hammer drill" mode. Failure to do so may cause damage to the drill or the tool attachment.

SEE FIGURE 6

ATTACHING DRILL TO TOOL WITH EXTENSION

SEE FIGURE 5

1. Pivot the left and right torque arms up toward the input hex shaft to facilitate attachment of the drill.

2. Insert the input shaft into the drill chuck, align the chuck jaws with the flats on the hex of the shaft and tighten the

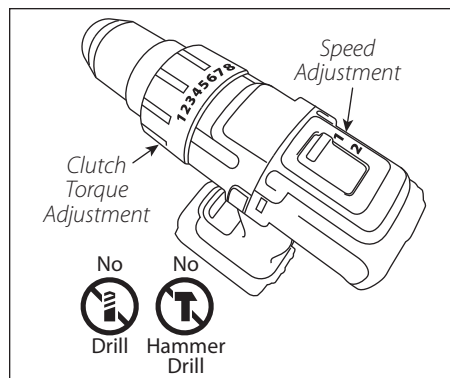


FIGURE 6

chuck to secure the drill to the tool.

3. Pivot the left and right torque arms back down so that the left and right wings nest over the foot of the drill that holds the drill's battery. Depending on the drill used, the plastic wing ends of the torque arms may be extended by removing the tool's hand knob nut (D) and bolt (E) closest to the drill and extending the plastic ends to the appropriate bolt hole position in the left and right aluminum tubes of the torque arms.

SEE FIGURE 4

4. Secure the wing ends of the torque arm with the rubber strap (I) hooked onto the best available hook of one torque arm wing, stretching the strap around the bottom of the battery and hooking it onto the best available hook on the other side. Multiple holes are available on the rubber strap to ensure a secure stretch fit around most any available battery size. **SEE FIGURE 5**

5. Tighten the hand knob nut on the torque arm closest to the drill by hand to apply a slight clamping force of the

torque arms against the drill.

DO NOT OVERTIGHTEN.

For smaller drills, use optional spacer (F) between hand knob nut and torque arm to prevent threaded end of bolt from protruding through knob nut.

SEE FIGURE 4

OPERATION

OPERATION TIPS

1. Before cultivating, check that the drill is properly aligned and tightened on the input shaft, and that the drill is set to the lowest speed setting.

2. Every drill is different. To set the ideal clutch torque setting, start by operating the cultivator tines in the soil with the drill clutch torque set to its lowest setting "1". Then incrementally increase the clutch torque level step-by-step, testing the engagement of the cultivator with the soil each time until the cultivator tines are able to turn the soil without slipping the drill's clutch or causing the drill to stop too easily in the soil that is being cultivated.

3. Cultivate without placing excessive body weight on the unit.

4. The Fusion™ cultivator can function moving forward and back, or side-to-side in a sweeping motion, and will cultivate deepest when pulling backward in the soil.

5. In softer soil, the Fusion™ cultivator can be operated with just one hand, much like a household vacuum cleaner. To direct the cultivator leftward in the soil when moving forward, rotate the

drill with the hand counterclockwise. To direct the cultivator rightward in the soil, rotate the drill clockwise.

6. Lifting the tines off the ground while running the drill in reverse can help remove most weeds that might wrap around the tines. Do not operate drill in reverse while tines are touching the ground.

TINE REMOVAL & INSTALLATION

SEE FIGURE 3

TO REMOVE TINES:

1. Remove the hairpins from each end of the tine shaft.
2. Slide the four tines off the shaft.

TO INSTALL TINES:

1. Slide two tines onto each side of the tine shaft, with the shoulders facing outward.
2. Insert the hairpins into tine holes to lock the tines in place.

Note: To reduce cultivating width, remove outer tines and hairpins.

STARTING AND STOPPING THE UNIT

Review the drill manufacturer's instructions for safe operation of the drill.

EXTENSION REMOVAL AND INSTALLATION

This tool is equipped with an extension that allows for normal cultivating operation while in a standing position. The extension can be removed for cultivating from a kneeling position or when cultivating in a tall raised garden bed. The shorter kneeling configuration of the cul-

tivator can be effective for cultivating in tightly spaced gardens and flower beds. To remove the extension and convert from standing to kneeling configuration, do as follows:

1. Remove the drill from the tool if attached.
2. Remove the left and right torque arms (R) and (Q) from the handle (O) by loosening and removing two hand knob nuts (D) and two bolts (E). **SEE FIGURE 4**
3. Slide the handle (O) off of the extension (P) and set aside.
4. Remove the extension from the transmission assembly by loosening and removing hand knob nut (D) and bolt (H). **SEE FIGURE 5**

SEE FIGURE 5

5. Slide the handle (O) onto the transmission assembly so that the upper locator stud on the aluminum tube of the transmission assembly fits snugly all the way into the middle position pocket of the handle. Though the handle can be installed in either direction on the aluminum tube of the transmission assembly, it is most common to have the Fusion™ logo facing toward the operator and drill.

SEE FIGURE 7

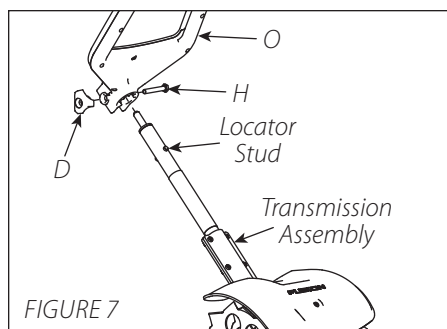


FIGURE 7

6. Secure the handle (O) to the transmission assembly using hand knob nut (D) hand tightened firmly onto bolt (H).

SEE FIGURE 7

⚠ CAUTION: Because the left and right torque arms are not used in the shortened kneeling configuration, two hands must always be used when operating the cultivator. One hand on the drill and the other hand on the handle. Failure to do so will result in loss of control of the tool.

To convert from kneeling to standing configurations, simply reverse the previous steps. Always check to ensure all components are attached according to assembly instructions in this manual and all hardware is securely fastened.

MAINTENANCE & STORAGE

STEPS FOR WORKING ON EQUIPMENT

1. Turn off drill and remove from unit.
2. Replace or repair the part on the unit.
3. Check all parts that were repaired,

or removed during repair, that they are secure and fit correctly.

Note: All repair parts must come from the factory. Never replace parts that are not specifically designed for the unit.

4. Reattach drill to unit.

STORAGE

When the unit is put in storage, follow the steps below to make sure the cultivator is in good condition the following season.

CULTIVATOR

Completely clean the cultivator.

Remove drill from cultivator. Remove all dirt and debris from cultivator components. Put the cultivator in a building that has good ventilation.

DRILL

Store according to drill manufacturer's recommendations.

TROUBLESHOOTING & REPAIR

At Ardisam, we build quality and durability into the design of our products; but no

WARNING

⚠ PRACTICE SAFETY AT ALL TIMES. DRILL MUST BE TURNED OFF AND REMOVED FROM UNIT BEFORE ATTEMPTING ANY MAINTENANCE OR REPAIR.

⚠ TO PREVENT ACCIDENTAL STARTING, DO NOT STORE THE UNIT WITH THE DRILL ATTACHED.

⚠ CHECK UNIT OFTEN FOR LOOSE NUTS, BOLTS, AND PINS. KEEP THESE ITEMS TIGHTENED.

⚠ AN ADULT MUST ALWAYS DO MAINTENANCE AND REPAIR ON UNIT.

amount of careful design by us, and careful maintenance by you, can guarantee a repair-free life for your Fusion™ cultivator. Most repairs will be minor and easily fixed by following the suggestions in the trouble-shooting guide in this section.

The guide will help you pinpoint the causes of common problems and identify remedies.

For more complicated repairs, you may want to rely on an authorized service center. A parts breakdown is located in this manual.

We will always be glad to answer any questions you have, or help you find suitable assistance. To order parts or inquire about warranty, call or email us using the

contact information found below or listed on the 'Contact Us' page on our website.

For any problems and/or repair with your drill, please consult your drill's manufacturer. Ardisam is not responsible for damage to the drill due to misuse of the cultivator.

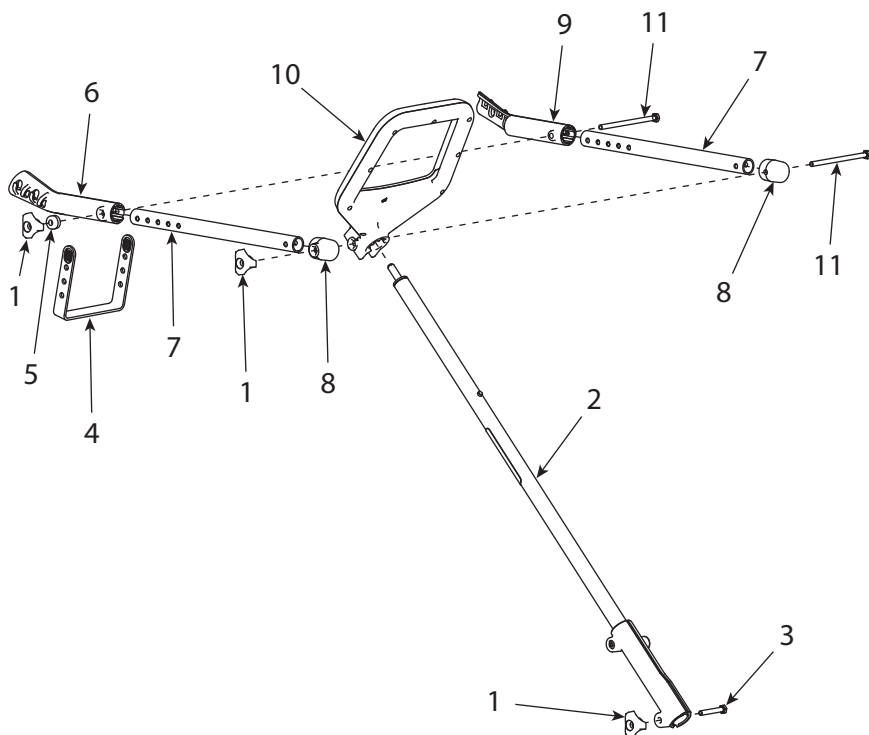
ORDERING REPLACEMENT PARTS

Parts can be obtained direct from the factory. To order parts, visit www.fusiondrillpowered.com or call (800) 345-6007. Please include the following information with your order:

Part Number(s), Part Description(s), Quantity, Model Number and Serial Number.

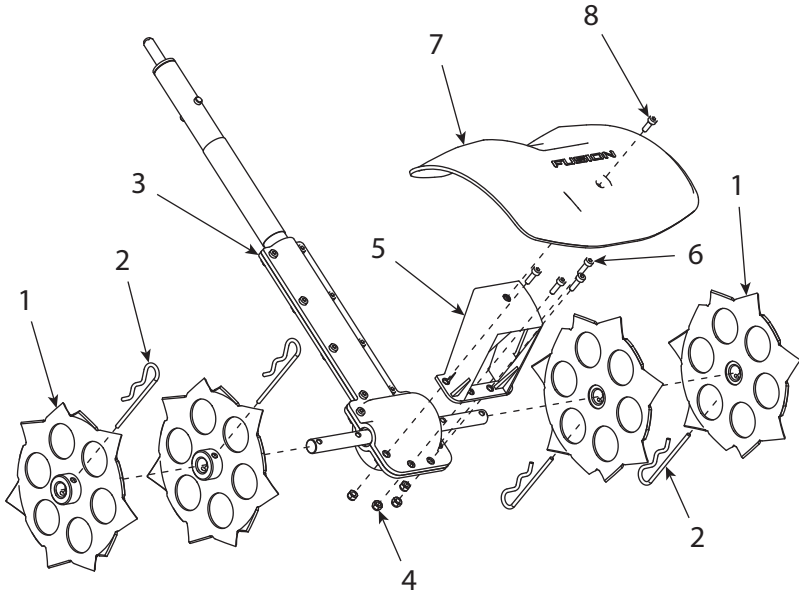
TROUBLE	CAUSE	CORRECTION
Drill does not start	Drill is not properly connected to unit	Check connection and secure according to assembly instructions
	Extension is not connected properly to the transmission	Check connection and secure according to assembly instructions
	Defective or broken drill	Contact drill manufacturer or replace drill
	Defective or dead battery	Replace or charge battery on drill
Tines spin but performance is not desirable	Drill speed setting is too fast	Decrease drill speed setting to slower speed
	Broken transmission	Inspect and replace damaged parts
Drill stops or clutch slips when cultivating	Debris or object is stuck in the tines	Remove debris or object from tines
	Drill clutch torque setting is too low	Increase clutch torque setting until cultivator is operable in soil
Cultivator operates for a few minutes, then slows to a stop	Drill battery charge is low	Check battery charge level and replace or charge if necessary
	Capacity of the drill's battery is insufficient	Replace battery with one that has a capacity of 3.0 Ah or greater

ILLUSTRATED PARTS BREAKDOWN - Extension Assembly



REF. / REP.	PART NO. / N° RÉF.	DESCRIPTION	QTY. / QTÉ
1	34078	KNOB NUT M6X1.0	3
2	34585	EXTENSION	1
3	18103	BOLT M6X1.0X40 MM	1
4	34582	RUBBER STRAP	1
5	35789	SPACER M6X17.5X10 MM (Optional)	1
6	34292	DRILL CAPTURE ARM RIGHT	1
7	34289	DRILL CAPTURE TUBE	2
8	34291	DRILL CAPTURE END CAP	2
9	34290	DRILL CAPTURE ARM LEFT	1
10	33679	HANDLE	1
11	34581	BOLT M6X1.0X100 MM	2

ILLUSTRATED PARTS BREAKDOWN - Transmission Assembly



REF. / REP.	PART NO. / N° RÉF.	DESCRIPTION	QTY. / QTÉ
1	33106	TINE	4
2	33107	HAIR PIN	4
3	34589	TRANSMISSION	1
4	23866	NUT M4X0.7X5 MM	4
5	34806	TINE SHIELD BRACKET	1
6	33065	BOLT M4X0.7X14 MM	4
7	35775	TINE SHIELD	1
8	33064	BOLT M4X0.7X12 MM	1
-	33294	PARTS BAG ASSEMBLY (Not Shown)	1

Fusion™ Drill-Powered Cultivator

Warranty Terms and Conditions

PRODUCT WARRANTY: 1-YEAR LIMITED WARRANTY

Ardisam, Inc., warrants this Fusion™ Drill-Powered Cultivator under a one-year limited warranty to be free from defects in materials or workmanship or both for a period not exceeding twelve consecutive months from the date of original purchase by the first retail consumer or commercial end user. "Consumer use" means personal recreational use by a retail consumer. "Commercial use" or "commercial application" means all other uses, including use for commercial, income producing or rental purposes. Once a product has experienced commercial use, it shall thereafter be considered as a commercial product for purposes of this warranty. This warranty applies to the original owner that provides a proof of purchase. The warranty is not transferable. The warranty period begins on the date of purchase by the first retail consumer or commercial end user, and continues for the twelve month consecutive period thereafter. Any unit used in a commercial application is covered for a period of 90 days after purchase. **For the warranty to be valid, the product must be registered online at www.fusiondrillpowered.com within 30 days of purchase.** Ardisam, Inc. shall not be obligated to ship any repair or replacement product to any location outside of the United States of America or Canada.

**This warranty applies only to products which have not been subjected to negligent use, misuse, uses other than those indicated in the product's owner's manual, alteration, accident, use of unauthorized parts, failure to perform periodic maintenance as specified in product's owner's manual, normal wear and tear, use of unauthorized parts or repairs performed at non-authorized service centers. There is no other expressed warranty. Implied warranties, including those of merchantability and fitness for a particular purpose, are limited to one year from purchase, or to the extent permitted by law. All other implied warranties are excluded. Liability for incidental or consequential damages are excluded to the extent exclusion is permitted by law. Ardisam, Inc. does not assume, and does not authorize any other person to assume for us, any liability in connection with the sale of our products. To obtain warranty service,*

you must have prior approval by calling our customer service department at 1-800-345-6007. If you choose to ship your product to Ardisam for warranty repair, you must first have prior approval from Ardisam by calling our customer service department for a return material authorization number (RMA#). Under these circumstances, all items must be shipped prepaid. Ardisam will at no charge, repair or replace, at their discretion, any defective part which satisfies all conditions stated above. Ardisam retains the right to change models, specifications and price without notice. Ardisam, Inc. shall not be obligated to ship any repair or replacement product to any location outside of the United States of America or Canada.



Fusion™, Division of Ardisam, Inc.
1160 8th Avenue, PO Box 666
Cumberland, WI 54829
800-345-6007 | Fax 715-822-4180
E-mail: info@fusiondrillpowered.com

Check for parts online at **www.fusiondrillpowered.com**
or call **800-345-6007** M-F 8-5 CDT

FUSION™
DRILL-POWERED TOOLS

1160 Eighth Avenue
PO Box 666
Cumberland, WI 54829

Phone: (800) 345-6007
Fax: (715) 822-2124
www.fusiondrillpowered.com