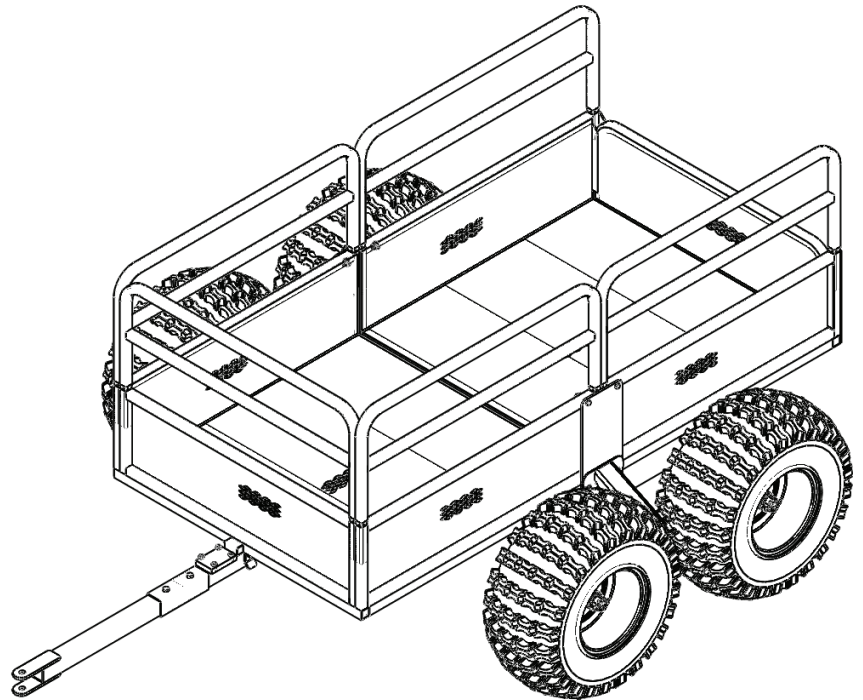
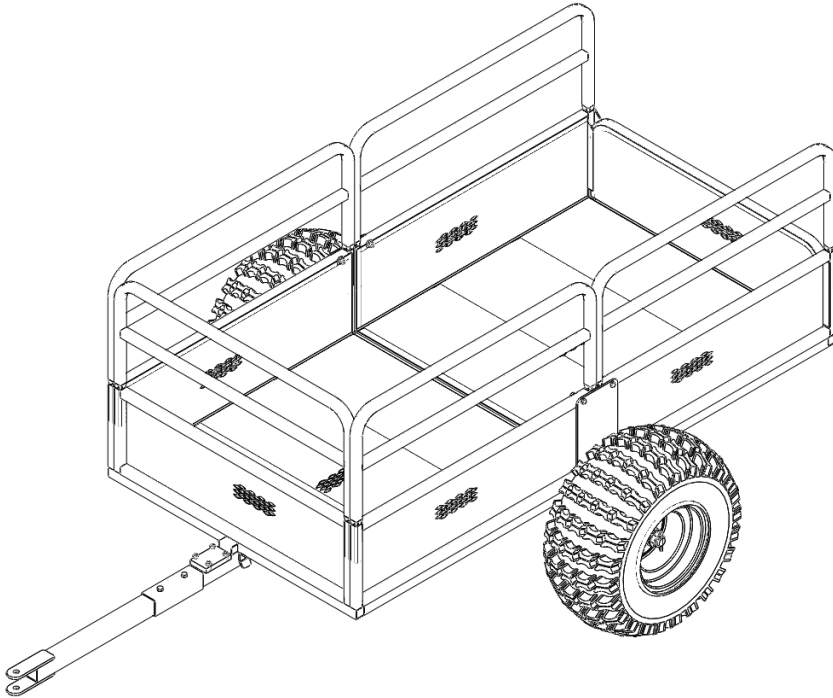




Operator's Manual
TX158, TX159
Two- and Four-Wheel
ATV Trailers
TX191 Tracking Beam Kit





YUTRAX offers a full line of ATV accessories. We appreciate your purchase of our world class ATV Trailers. Follow these few simple instructions and your product will be sure to give you many years of trouble free pleasure. Instructions should be kept in a safe place and reviewed at least annually.

If for any reason you have a problem with your product, **DO NOT return to the retailer;** contact the YUTRAX customer service department Monday through Friday from 8 a.m. to 5 p.m. at 800-345-6007 for assistance.

ASSEMBLY INSTRUCTIONS:

Tools needed -- two 7/16" wrenches, two 1/2" wrenches, 3/4" socket with ratchet & extension, needle nose pliers and a grease gun w/fitting.

IMPORTANT ASSEMBLY TIP: Do not tighten any nut and bolt combinations completely until all parts are assembled together! Finger tighten plus one turn of a wrench only! This will temporarily hold the lock nut on the bolt while helping alignment of all parts! After all parts are assembled together, all nut & bolt combinations must be completely tightened.

1. Insert rear tongue tube (TK81) to the welded-on "U"-bracket located on the axle tube (TK80) using (1) provided 5/16-18 x 2-3/4" bolt, nyloc nut and 5/16" washer. **SEE FIGURE 1 OR 2.**
2. Insert the front hitch tongue (TK85) and the rear hitch tongue (TK87) into the connector pocket (TK89) and secure using (2) provided 5/16-18 x 2-1/4" bolts and nyloc nuts. **SEE FIGURE 1 OR 2.**
3. Attach the assembled hitch tongue to the rear tongue tube using (2) provided 5/16-18 x 4" bolts, nyloc nuts and (4) steel washers. Be sure the entire tongue assembly is aligned before tightening. **SEE FIGURE 1 OR 2.**
NOTE: Front tongue does not go inside rear tongue. Front tongue bolts on top of rear tongue.
4. Slide the axle plate (300705) over the short end of axle spindle (TK48). Thread the short end of axle spindle into the axle tube until tight. Back off the axle spindle until holes are aligned and secure using (1) provided 1/4-20 x 1-3/4" bolt and nyloc nut. **SEE FIGURE 1 OR 2.** Repeat this step for the other side.

FORTX158

5. Support the trailer far enough off the ground for the assembly of the wheels. Slide the wheel onto the threaded axle spindle with grease fitting facing out-

⚠ WARNING

READ, UNDERSTAND AND FOLLOW ALL ASSEMBLY, INSPECTION, MAINTENANCE & USE INSTRUCTIONS PROVIDED BEFORE EACH USE. FAILURE TO FOLLOW ALL WARNINGS AND INSTRUCTIONS COULD RESULT IN SERIOUS INJURY OR DEATH.

BE SURE TO FOLLOW ALL INSTRUCTIONS PROVIDED. IF ANY INSTRUCTIONS ARE NOT UNDERSTOOD OR IF YOU HAVE A PARTS ISSUE, CALL 800-345-6007 BEFORE USING.

THE WHEEL BEARINGS ARE NOT FACTORY GREASED. YOU MUST GREASE THE BEARINGS BEFORE USE. CHECK GREASE LEVEL FREQUENTLY TO PREVENT BEARINGS FROM SEIZING.

DOUBLE CHECK THE ASSEMBLY OF YOUR TRAILER TO BE SURE YOU ASSEMBLED IT CORRECTLY AND ALL NUT & BOLT ASSEMBLIES ARE TIGHT BEFORE INITIAL USE.

BE SURE TO PERIODICALLY CHECK ALL NUT AND BOLTS FOR TIGHTNESS. OVER TIME, NUTS AND BOLTS MAY BECOME LOOSE FROM VIBRATION.

BE SURE TO ALWAYS HAVE THE CORRECT AMOUNT OF AIR PRESSURE IN TIRES. THIS WILL HELP DETER FROM UNNECESSARY WEAR AND/OR DAMAGE.

NEVER DRIVE ON HILLY TERRAIN - EXCESSIVE WEIGHT CAN CAUSE WEIGHT SHIFTS WHICH CAN LEAD TO LOSS OF CONTROL OF YOUR ATV AND/OR ATV TRAILER.

DO NOT DRIVE IN EXCESS OF 10 MPH WHILE USING THIS PRODUCT.

NEVER ALLOW PEOPLE OR ANIMALS TO RIDE IN THE ATV TRAILER! IT IS NOT DESIGNED FOR THAT MATTER.

USE CAUTION NEAR TRAILER TILT LATCH. BE SURE LATCH IS ENGAGED BEFORE EACH USE.

NEVER EXCEED THE MAXIMUM WEIGHT CAPACITY OF 1250 LBS. OF EVENLY DISTRIBUTED WEIGHT.

ward. Secure in place following this order: wheel, 3/4" washer, 3/4" crown nut and cotter pin. Back crown nut off just enough so wheel spins freely and crown nut slot aligns with hole in threaded axle spindle. Insert cotter pin. Using a needle nose pliers, bend cotter pin ears around so it will not come off the axle spindle. Repeat this step for remaining wheel. **SEE FIGURE 1.**

IMPORTANT NOTE: You must grease the bearings of each wheel. Using a grease gun, pump high quality grease into the bearings by attaching to grease fitting located on wheel hub. Check the grease level frequently to prevent bearings from seizing.



FOR TX159

5. Support the trailer far enough off the ground for the assembly of the tracking beams, braces and wheels. Slide the tracking beam and brace onto the threaded axle spindle. Secure in place following this order: tracking beam, tracking beam brace, 3/4" crown nut and cotter pin. Back crown nut off just enough so tracking beam will pivot freely and crown nut slot aligns with hole in threaded axle spindle. Insert cotter pin. Using a needle nose pliers, bend cotter pin ears around so it will not come off the axle spindle. Repeat this step for remaining tracking beam. **SEE FIGURES 2 AND 3.**

6. Slide the wheel onto the threaded axle spindle of tracking beams with grease fitting facing outward. Secure in place following this order: wheel, 3/4" washer, 3/4" crown nut and cotter pin. Back crown nut off just enough so wheel spins freely and crown nut slot aligns with hole in threaded axle spindle. Insert cotter pin. Using a needle nose pliers, bend cotter pin ears around so it will not come off the axle spindle. Repeat this step for remaining three wheels. **SEE FIGURES 2 AND 3.**

IMPORTANT NOTE: You must grease the bearings of each wheel. Using a grease gun, pump high quality grease into the bearings by attaching to grease fitting located on wheel hub. Check the grease level frequently to prevent bearings from seizing.

FOR BOTH MODELS

7. Attach front trailer frame and the rear trailer frame together using (2) provided 1/4-20 x 2" bolts, (2) 1/4-20 x 2-1/2" bolts, (4) nyloc nuts and (8) 1/4" washers. **SEE FIGURE 1 OR 2.**
8. Attach the front trailer frame (300713) to the axle plates using (2) provided 1/4-20 x 1-1/2" bolts, (2) 1/4-20 x 2" bolts, (4) nyloc nuts and (4) 1/4" washers. **SEE FIGURE 1 OR 2.** Latch the front trailer frame to the latch located on trailer tongue to hold in place.
9. Attach the rear trailer frame (300710) to the axle plates using (2) provided 1/4-20 x 1-1/2" bolts, (2) 1/4-20 x 2" bolts, (4) nyloc nuts and (4) 1/4" washers. **SEE FIGURE 1 OR 2. You must now tighten all nut & bolt assemblies. Be sure not to over tighten or crush tubing when tightening!**
10. Slide the removable tailgate (300704) into the slots of rear trailer frame. Slide the removable side rails (300700 & 300701) into the top side of front and rear trailer frames. **SEE FIGURE 1 OR 2.**

NOTE: The side rail that goes in the front of trailer frame is narrower than the others. Lubrication is recommended at slide-together points.

USE INSTRUCTIONS:

1. To use the tilt/pivot feature, simply unlatch the latch located on trailer tongue. This will allow you to tilt the trailer frame upward to unload. If pivoting is desired, simply unlatch the latch and turn the trailer frame to the desired location, left or right, and tilt trailer frame upward to unload. This feature works well when in tight areas. Or if backing up your trailer is not an option, simply drive along side desired unloading area, unlatch the trailer frame and turn trailer frame to desired location.

Always...

- Be sure the trailer is securely attached to ATV hitch.
- Check tires for correct air pressure before each use.
- Use as 4-wheeled ATV trailer only.
- Inspect before each & every use to be sure there is no product damage or loose/missing bolts & hardware.
- Have wheel bearings properly greased to avoid bearings from seizing.

Never...

- Use excessive speeds while towing trailer.
- Exceed the maximum load capacity of 1250 lbs.
- Allow people or animals to ride in trailer.
- Use on hilly terrain.
- Use a damaged product.
- Use when intoxicated or using over-the-counter medication or prescription drugs.
- Use on rocky or obstacle ridden terrain.
- Use carelessly -- Think Safety!

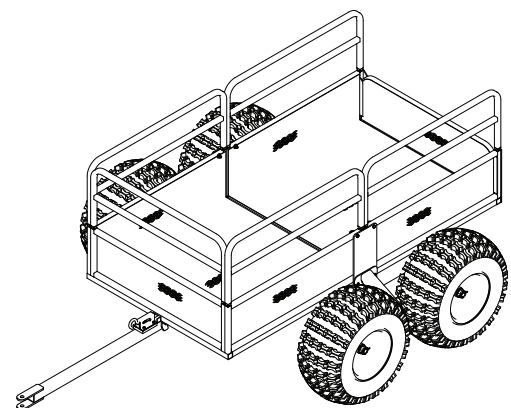
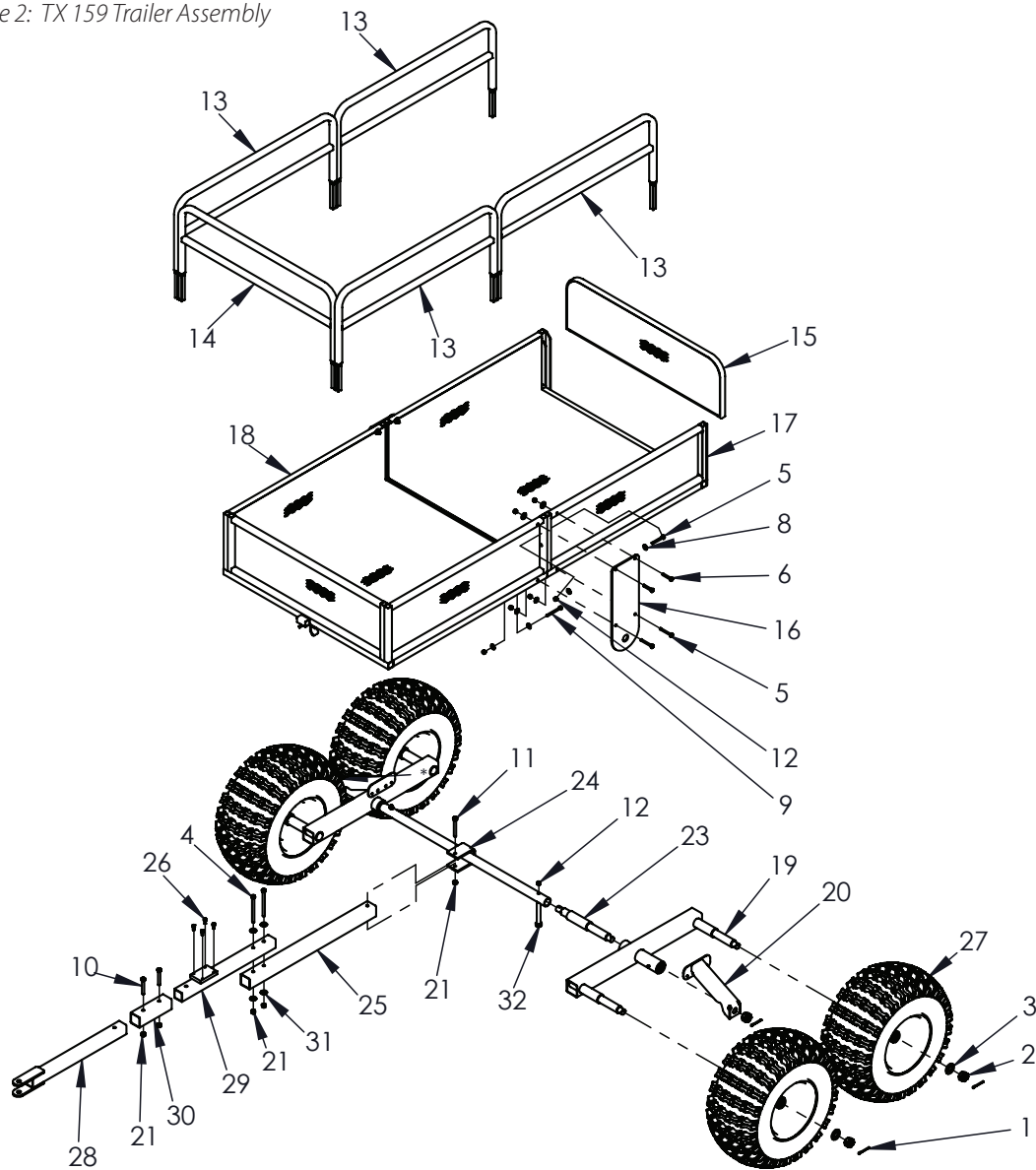
OPTIONAL ACCESSORIES

TX112 Ball Hitch Kit

TX191 Extreme Tracking Beam Kit (for TX158 only)

[illegible]

Figure 2: TX 159 Trailer Assembly



TX159 ATV Trailer assembled



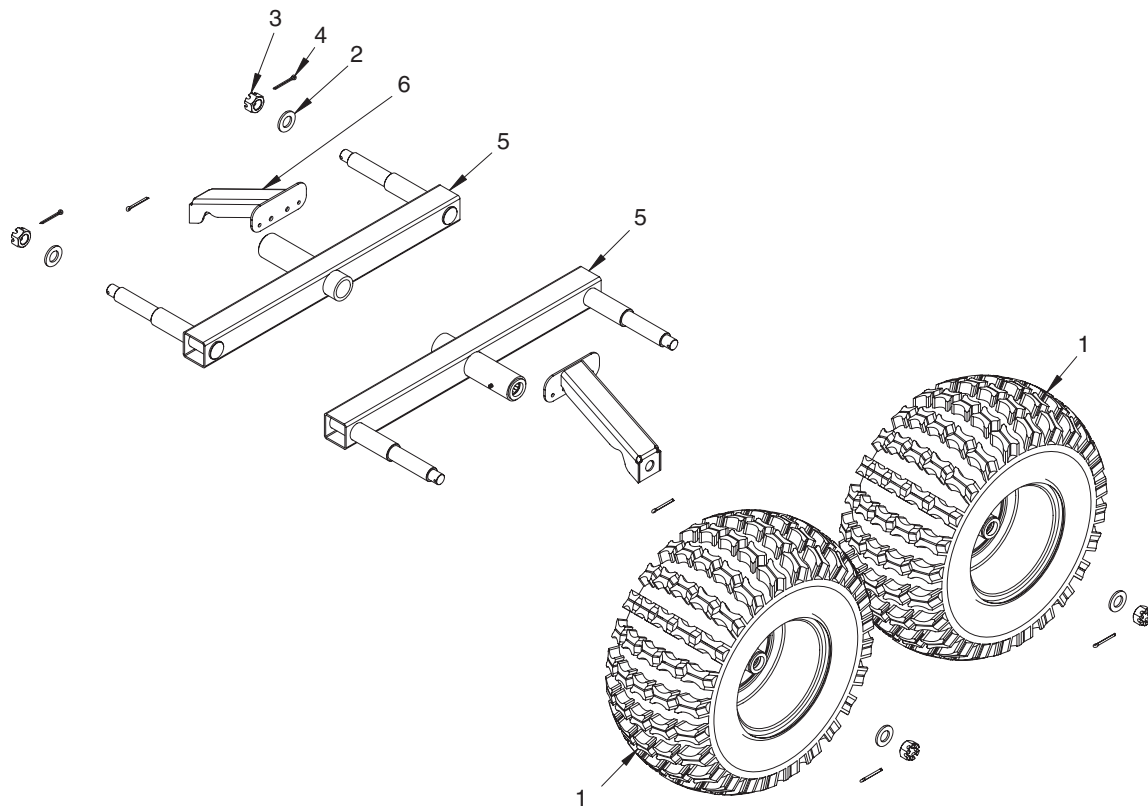
TX158 PARTS LIST

KEY #	PART #	DESCRIPTION	QTY.
1	4155	PIN COTTER 5/32 X 1-1/2 SUPPLIED W-4099	2
2	4157	NUT-CASTLE 3/4" RETAINER FOR HIGH SPEED	2
3	4159	WASHER 3/4" SPINDLE SAE	2
4	4166	BOLT 5/16-18 X 4 HH GR5 ZN	2
5	48153B	BOLT 1/4-20 X 2 HHCS GR5 BLK ZN	6
6	48240B	BOLT 1/4-20 X 1-1/2 HHCS GR5 BLK ZN	4
7	48250B	BOLT 1/4-20 X 1-3/4 HHCS GR5 BLK ZN	2
8	48261B	WASHER 1/4 BLK ZNC	16
9	48270B	BOLT 1/4-20 X 2-1/2 HHCS GR5 BLK ZN	2
10	48300	BOLT 5/16-18 X 2-1/4 HHCS GR5 ZN	2
11	53610	BOLT 5/16-18 X 2-3/4 HHCS GR5 ZN	1
12	67538	NUT 1/4-20 HNYLK ZN	14
13	300700	WELDMENT / TUBE STRUCTURE SIDE RACK TRAILER	4
14	300701	WELDMENT / TUBE STRUCTURE FRONT RACK TRAILER	1
15	300704	WELDMENT, TAILGATE TRAILER	1
16	300705	PLATE, SPLICE AND AXLE MOUNT TRAILER	2
17	300710	WELDMENT, REAR TRAILER	1
18	300713	WELDMENT, FRONT TRAILER	1
19	60G5NY	NUT 5/16-18 NYLOC	5
20	TK31	LATCH- ATV TRAILER	1
21	TK46	BOLT 1/4-20 X 1/2 SHCS	4
22	TK48	THREADED AXLE SHAFT FOR ATV TRAILER	2
23	TK78	TIRE/WHEEL ASSEMBLY, ATV TRAILERS	2
24	TK80	AXLE TUBE - THREADED - MOOSE	1
25	TK81	TONGUE - REAR - MOOSE	1
26	TK85	WELDMENT FRONT TONGUE HITCH TONGUE	1
27	TK87	WELDMENT REAR HITCH TONGUE	1
28	TK89	FTS, CONNECTOR POCKET	1
29	WF516	WASHER FLAT 5/16" STANDARD ZN	5

TX159 PARTS LIST

KEY #	PART #	DESCRIPTION	QTY.
1	4155	PIN COTTER 5/32 X 1-1/2 SUPPLIED W-4099	6
2	4157	NUT-CASTLE 3/4" RETAINER FOR HIGH SPEED	4
3	4159	WASHER 3/4" SPINDLE SAE	4
4	4166	BOLT 5/16-18 X 4 HH GR5 ZN	2
5	48153B	BOLT 1/4-20 X 2 HHCS GR5 BLK ZN	6
6	48240B	BOLT 1/4-20 X 1-1/2 HHCS GR5 BLK ZN	4
7	48250B	BOLT 1/4-20 X 1-3/4 HHCS GR5 BLK ZN	1
8	48261B	WASHER 1/4 BLK ZNC	14
9	48270B	BOLT 1/4-20 X 2-1/2 HHCS GR5 BLK ZN	2
10	48300	BOLT 5/16-18 X 2-1/4 HHCS GR5 ZN	2
11	53610	BOLT 5/16-18 X 2-3/4 HHCS GR5 ZN	1
12	67538	NUT 1/4-20 HNYLK ZN	14
13	300700	WELDMENT / TUBE STRUCTURE SIDE RACK TRAILER	4
14	300701	WELDMENT / TUBE STRUCTURE FRONT RACK TRAILER	1
15	300704	WELDMENT, TAILGATE TRAILER	1
16	300705	PLATE, SPLICE AND AXLE MOUNT TRAILER	2
17	300710	WELDMENT, REAR TRAILER	1
18	300713	WELDMENT, FRONT TRAILER	1
19	300721	WELDMENT, TRACKING BEAM	2
20	300724	WELDMENT, TRACKING BEAM BRACE	2
21	60G5NY	NUT 5/16-18 NYLOC	5
22	TK31	LATCH- ATV TRAILER	1
23	TK48	THREADED AXLE SHAFT FOR ATV TRAILER	2
24	TK80	AXLE TUBE - THREADED - MOOSE	1
25	TK81	TONGUE - REAR - MOOSE	1
26	TK46	BOLT 1/4-20 X 1/2 SHCS	4
27	TK78	TIRE/WHEEL ASSEMBLY, ATV TRAILERS	4
28	TK85	WELDMENT FRONT TONGUE HITCH TONGUE	1
29	TK87	WELDMENT REAR HITCH TONGUE	1
30	TK89	FTS, CONNECTOR POCKET	1
31	WF516	WASHER FLAT 5/16" STANDARD ZN	7
32	4362	BOLT 1/2-13 X 3-1/2 HHCS	1

Figure 3: Model TX191 Tracking Beam Kit



MODEL AV191 TRACKING BEAM KIT*			
1	TK78	TIRE/WHEEL ASSEMBLY	2
2	4159	WASHER, SPINDLE 3/4"	4
3	4157	NUT, CASTLE 3/4" RETAINER	4
4	4155	PIN, COTTER 5/32 X 1-1/2"	6
5	300721	TRACKING BEAM	2
6	300724	BRACE, TRACKING BEAM	2

* Only two tires and four castle nuts are supplied with the kit due to trailer coming with two tires and two castle nuts.

WARRANTY

YUTRAX, a division of Ardisam Incorporated, offers a one year limited warranty to be free from defects in materials and workmanship for the service life of the product, not to exceed twelve consecutive months from the date of purchase. This warranty applies to the original owner with a proof of purchase and is not transferable. This warranty applies only to products which have not been subjected to negligent use, misuse, alteration, accident or if repairs have been made by anyone outside our factory. This warranty supersedes all other warranties either expressed or implied and all other obligations or liabilities on our part. Ardisam, Inc., does not assume, and does not authorize any other person to assume for us, any liability in connection with the sale of our products. Warranty work must be sent directly to Ardisam, Inc. or one of our authorized service centers and performed by them. **To obtain warranty service and/or replacement instructions, you must have prior approval from Ardisam, Inc. before shipping your package to us by calling our customer service department at 800-345-6007 between 8 a.m. and 5 p.m. Monday through Friday, or by writing to: Ardisam, Inc., P.O. Box 666, 1160 Eighth Avenue, Cumberland, WI 54829 for a return material authorization number (RMA#).** All items must be shipped prepaid. Ardisam, Inc. will at no charge, repair or replace, at their discretion, any defective part which falls under the conditions stated above. Ardisam retains the right to change models, specifications and price without notice.

**For replacement parts, phone 800-345-6007
or go online to www.yutrax.com.**



YUTRAX™, Division of Ardisam, Inc.
1160 8th Avenue, PO Box 666
Cumberland, WI 54829
800-345-6007 | Fax 715-822-2223
Email: info@ardisam.com