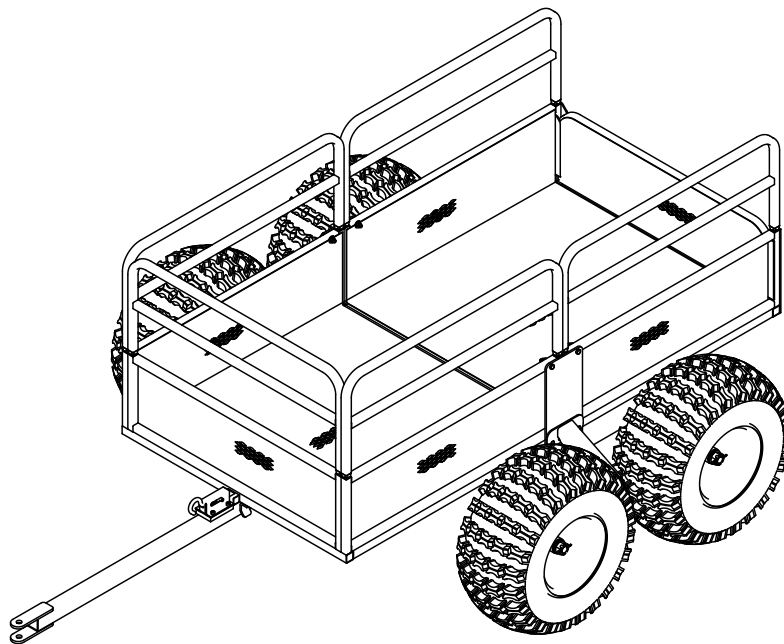




Operator's Manual

**TX159**  
**Four-Wheel**  
**ATV Trailer**

Rated Capacity - 1250lb



P/N: OMTX159  
REV1: 08/17/13  
© 2013 Ardisam, Inc.  
All Rights Reserved.

YUTRAX™ offers a full line of ATV accessories. We appreciate your purchase of our world class ATV Trailers. Follow these few simple instructions and your product will be sure to give you many years of trouble free pleasure. Instructions should be kept in a safe place and reviewed at least annually.

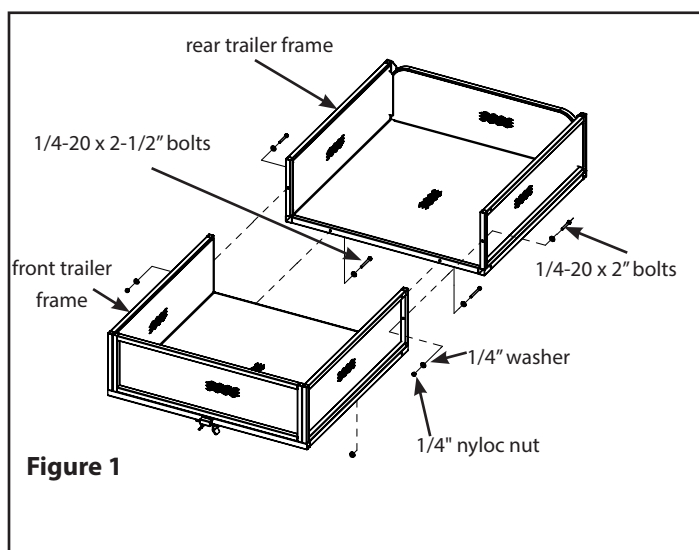
If for any reason you have a problem with your product, **DO NOT return to the retailer**; contact the YUTRAX™ customer service department Monday through Friday from 8 a.m. to 5 p.m. CST at 800-345-6007 for assistance.

### ASSEMBLY INSTRUCTIONS:

Tools needed -- two 7/16" wrenches, two 1/2" wrenches, 3/4" socket with ratchet & extension, needle nose pliers and a grease gun with fitting.

**IMPORTANT ASSEMBLY TIP:** *Do not tighten any nut and bolt combinations completely until all parts are assembled together! Finger tighten plus one turn of a wrench only! This will temporarily hold the lock nut on the bolt while helping alignment of all parts! After all parts are assembled together, all nut & bolt combinations must be completely tightened.*

1. Attach front trailer frame (300713) and the rear trailer frame (300710) together using provided (2) 1/4-20 x 2" bolts, (2) 1/4-20 x 2-1/2" bolts, (4) nyloc nuts and (8) 1/4" washers. **SEE FIGURE 1.**
2. Attach the splicing plates (300705) on both sides using (4) 1/4-20 x 1-1/2" bolts, (4) nyloc nuts, and (4) 1/4" washers in the top holes only. **SEE FIGURE 2**



**Figure 1**

**ASSEMBLY TIP**  
**FOR EASIER ASSEMBLY, PLACE UNIT**  
**UPSIDE DOWN UP TO STEP 8.**

## ⚠ WARNING

**READ, UNDERSTAND AND FOLLOW ALL ASSEMBLY, INSPECTION, MAINTENANCE & USE INSTRUCTIONS PROVIDED BEFORE EACH USE. FAILURE TO FOLLOW ALL WARNINGS AND INSTRUCTIONS COULD RESULT IN SERIOUS INJURY OR DEATH.**

**BE SURE TO FOLLOW ALL INSTRUCTIONS PROVIDED. IF ANY INSTRUCTIONS ARE NOT UNDERSTOOD OR IF YOU HAVE A PARTS ISSUE, CALL 800-345-6007 BEFORE USING.**

**THE WHEEL BEARINGS ARE NOT FACTORY GREASED. YOU MUST GREASE THE BEARINGS BEFORE USE. CHECK GREASE LEVEL FREQUENTLY TO PREVENT BEARINGS FROM SEIZING.**

**DOUBLE CHECK THE ASSEMBLY OF YOUR TRAILER TO BE SURE YOU ASSEMBLED IT CORRECTLY AND ALL NUT & BOLT ASSEMBLIES ARE TIGHT BEFORE INITIAL USE.**

**BE SURE TO PERIODICALLY CHECK ALL NUT AND BOLTS FOR TIGHTNESS. OVER TIME, NUTS AND BOLTS MAY BECOME LOOSE FROM VIBRATION.**

**BE SURE TO ALWAYS HAVE THE CORRECT AMOUNT OF AIR PRESSURE IN TIRES. THIS WILL HELP DETER FROM UNNECESSARY WEAR AND/OR DAMAGE. AIR PRESSURE CAN BE FOUND ON SIDEWALL OF TIRE.**

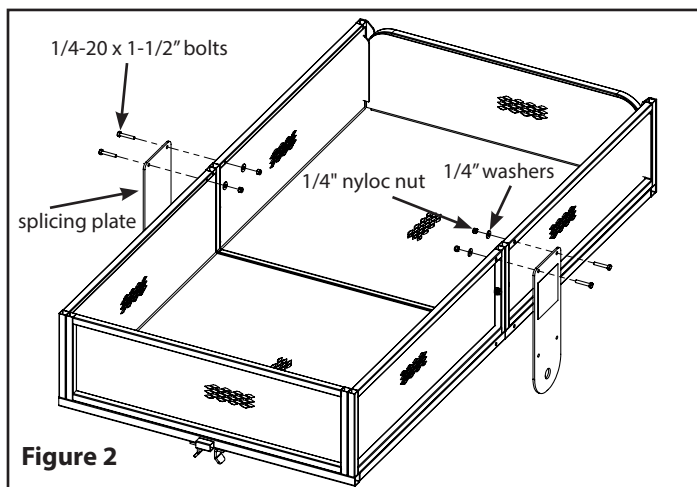
**NEVER DRIVE ON HILLY TERRAIN - EXCESSIVE WEIGHT CAN CAUSE WEIGHT SHIFTS WHICH CAN LEAD TO LOSS OF CONTROL OF YOUR ATV AND/OR ATV TRAILER.**

**DO NOT DRIVE IN EXCESS OF 10 MPH WHILE USING THIS PRODUCT.**

**NEVER ALLOW PEOPLE OR ANIMALS TO RIDE IN THE ATV TRAILER! IT IS NOT DESIGNED FOR THAT MATTER.**

**USE CAUTION NEAR TRAILER TILT LATCH. BE SURE LATCH IS ENGAGED BEFORE EACH USE.**

**NEVER EXCEED THE MAXIMUM WEIGHT CAPACITY OF 1250 LB OF EVENLY DISTRIBUTED WEIGHT.**

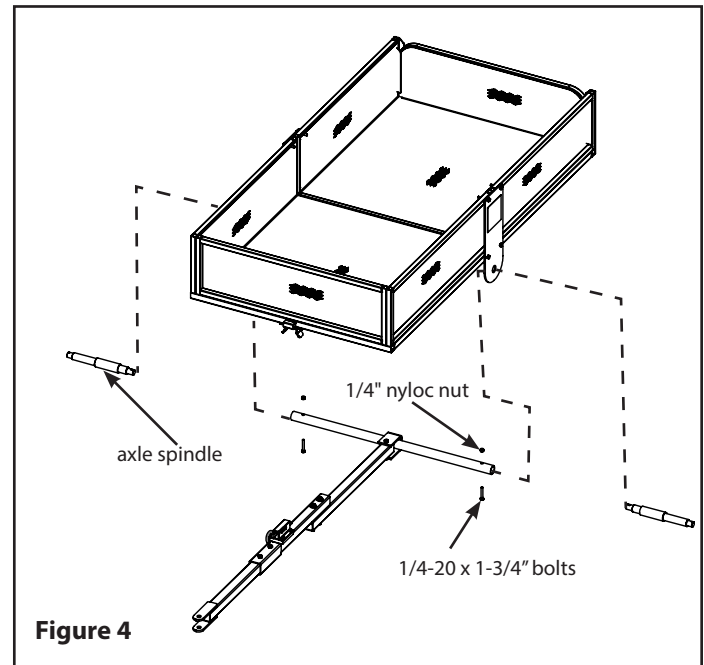


**Figure 2**

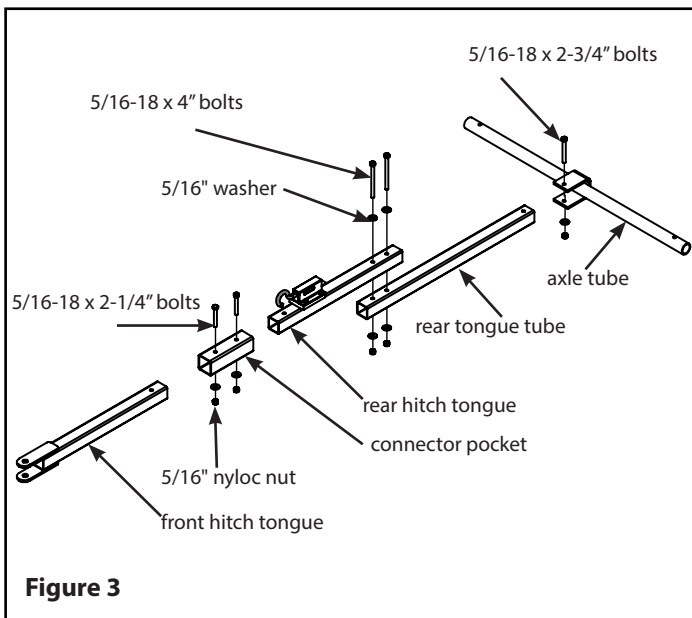
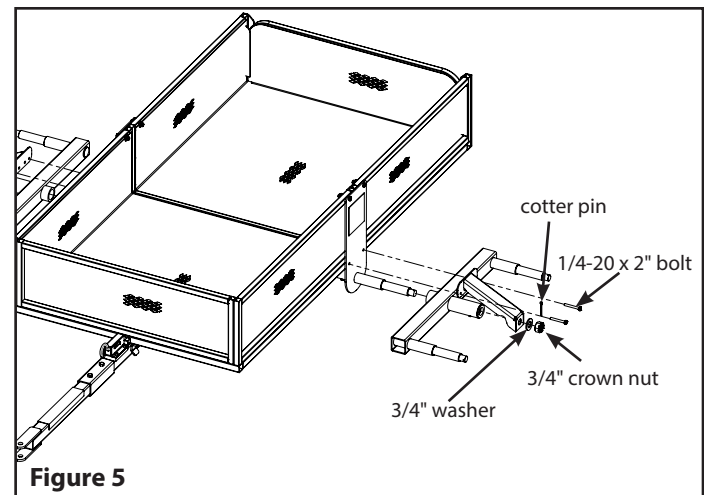
3. Insert rear tongue tube (TK81) into the welded on "U"- bracket located on the axle tube (TK80) and secure using (1) provided 5/16-18 x 2-3/4 bolt, nyloc nut, and 5/16" washer on the nut side. **SEE FIGURE 3**
4. Insert the front hitch tongue (TK85) and the rear hitch tongue (TK87) into the connector pocket (TK89) and secure it using (2) provided 5/16-18 x 2-1/4" bolts, (2) nyloc nuts, and (2) 5/16" washers on the nut side. **SEE FIGURE 3**
5. Attach the previous hitch tongue to the rear tongue tube by stacking the tubes with the front tongue on top. Insert the provided (2) 5/16-18 x 4" bolts with (4) 5/16" washers and (2) nyloc nuts. **SEE FIGURE 3**

**NOTE: Front tongue does not go inside rear tongue. Front tongue bolts on top of rear tongue.**

6. Attach the complete tongue/axle assembly to the frame by inserting the short end of the axle spindles (TK48) through the splice plates (300705) into the threaded axle tube (TK80). Thread spindle until tight, then back off until holes align to insert (2) 1/4-20 x 1-3/4" bolts from the bottom to hold axles in place. Secure the bolts with (2) 1/4" nyloc nuts. **SEE FIGURE 4**



7. Support the trailer off of the ground for the assembly of the tracking beams, braces and wheels. Slide the tracking beam (300721) onto the threaded axle first, followed by the brace (300724), a 3/4" washer, and the 3/4" castle nut. Back the crown nut off just enough so the tracking beam will pivot freely and crown nut slot aligns with hole in threaded axle spindle. Insert cotter pin and bend tangs over with a needle nose pliers so it will not come out. Insert (4) 1/4-20 x 2" bolts through the brace (300724), the splice plate (300705), and the front and rear trailer frames (300713) and (300710). Slide (4) 1/4" washers onto the bolts followed by the (4) 1/4" nuts. Repeat this step for the remaining tracking beam. **SEE FIGURE 5**



8. Slide the wheel (TK78) onto the threaded axle spindle of the tracking beams with grease fitting facing outward. Secure in place in the following order: wheel (TK78), 3/4" washer, 3/4" crown nut, and cotter pin. Back nut off enough so the wheel spins freely and crown nut slot aligns with hole in threaded axle spindle. Insert cotter pin and bend tangs over with a needle nose pliers so it will not come off of the axle. Repeat this step for the remaining 3 wheels. **SEE FIGURE 6**

**IMPORTANT NOTE:** You must grease the bearings of each wheel. Using a grease gun, pump high-quality grease into the bearings by attaching to grease fitting located on wheel hub. Check the grease level frequently to prevent bearings from seizing.

9. Slide the removable tailgate (300704) into the slots of the rear trailer frame. Slide the removable side rails (300700 & 300701) into the top side of the front and rear trailer frames.

**Note:** The side rail in the front of the trailer is smaller than all of the other rails. Lubrication is recommended at slide-together points. **SEE FIGURE 6**

10. Tighten all nut & bolt assemblies. Be sure not to over tighten or crush tubing when tightening.

## OPTIONAL ACCESSORIES

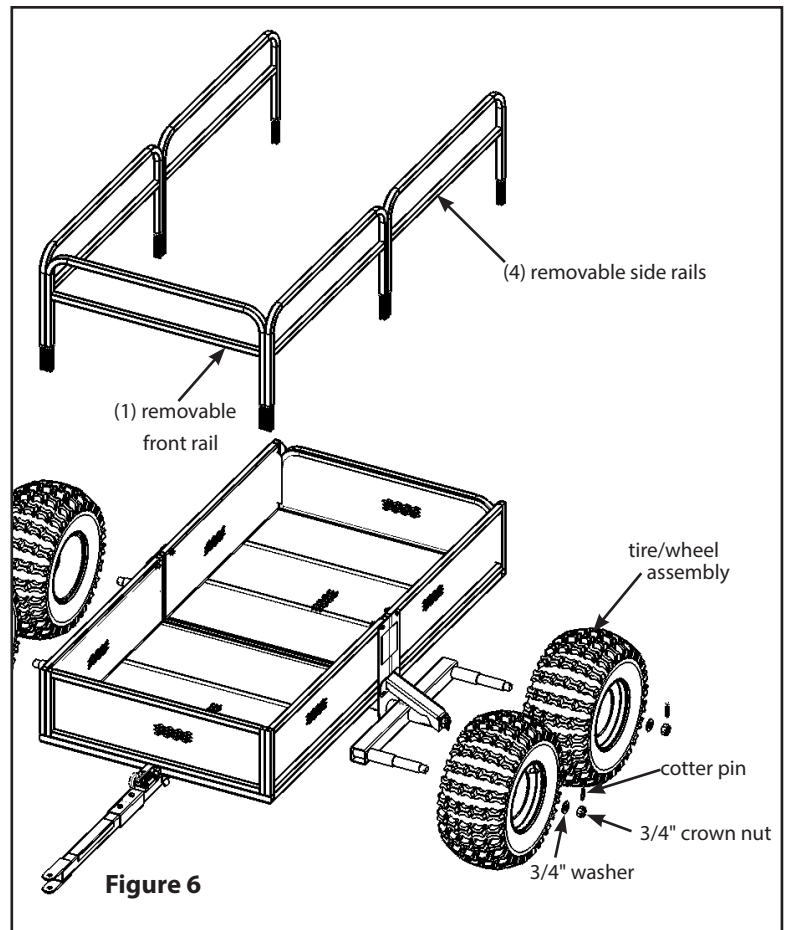
TX112 2" Ball Hitch Kit

### Always...

- Be sure the trailer is securely attached to ATV hitch.
- Check tires for correct air pressure before each use.
- Use as four-wheeled ATV trailer only.
- Inspect before each & every use to be sure there is no product damage or loose/missing bolts & hardware.
- Have wheel bearings properly greased to avoid bearings from seizing.

### Never...

- Use excessive speeds while towing trailer.
- Exceed the maximum load capacity of 1250 lb.
- Allow people or animals to ride in trailer.
- Use on hilly terrain.
- Use a damaged product.
- Use when intoxicated or using over-the-counter medication or prescription drugs.
- Use on rocky or obstacle ridden terrain.
- Use carelessly -- Think Safety!

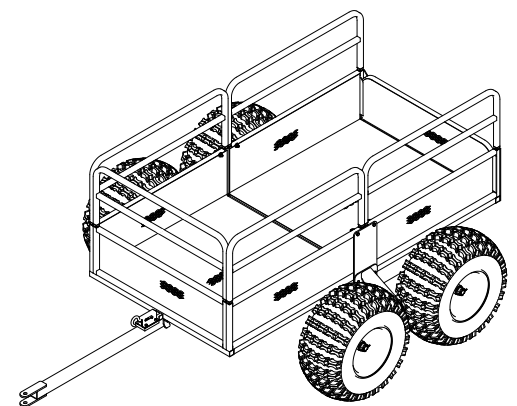
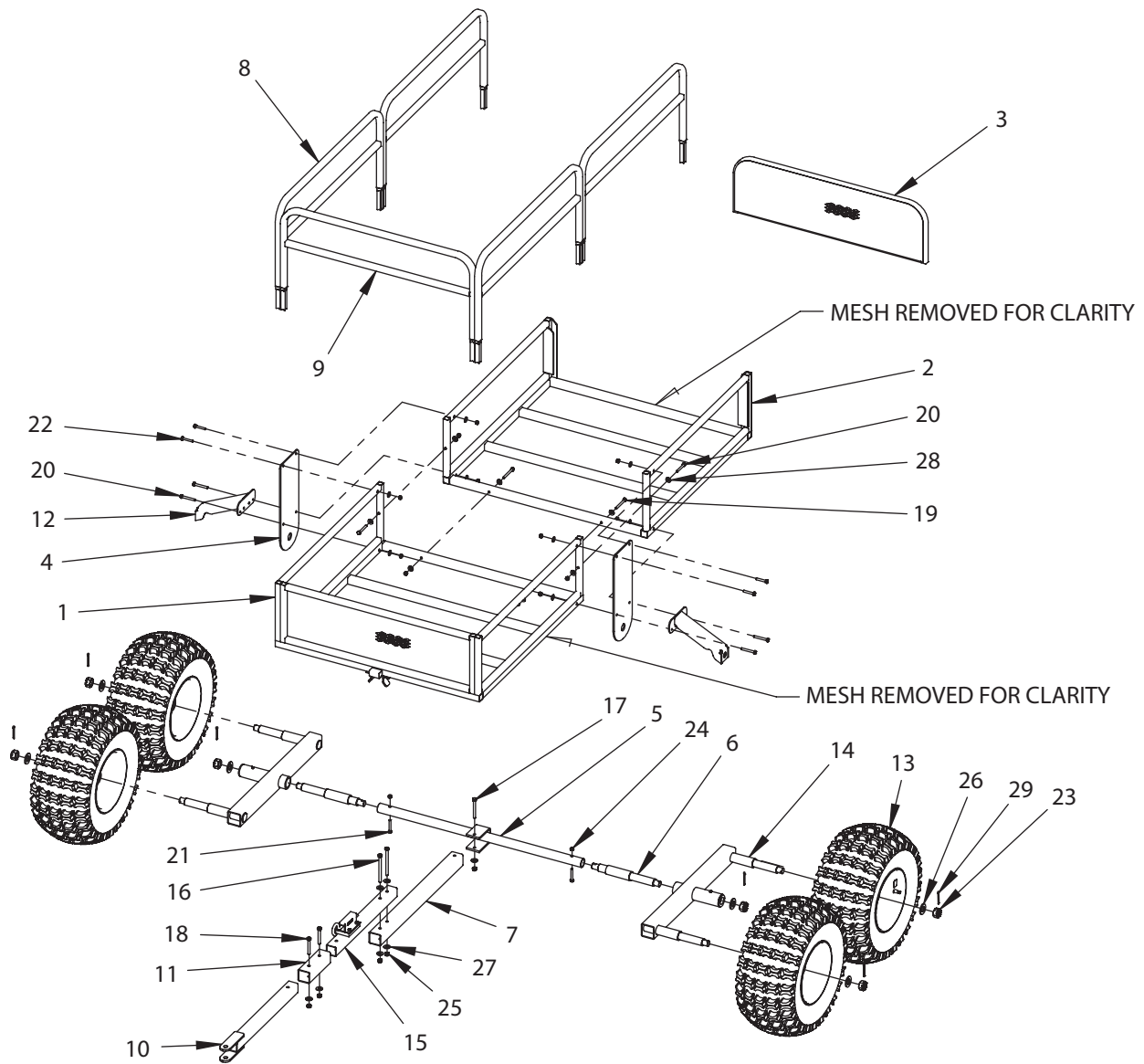




### WARRANTY

YUTRAX™, a division of Ardisam Incorporated, offers a one year limited warranty to be free from defects in materials and workmanship for the service life of the product, not to exceed twelve consecutive months from the date of purchase. This warranty applies to the original owner with a proof of purchase and is not transferable. This warranty applies only to products which have not been subjected to negligent use, misuse, alteration, accident or if repairs have been made by anyone outside our factory. This warranty supersedes all other warranties either expressed or implied and all other obligations or liabilities on our part. Ardisam, Inc., does not assume, and does not authorize any other person to assume for us, any liability in connection with the sale of our products. Warranty work must be sent directly to Ardisam, Inc., or one of our authorized service centers and performed by them. **To obtain warranty service and/or replacement instructions, you must have prior approval from Ardisam, Inc., before shipping your package to us by calling our customer service department at 800-345-6007 between 8 a.m. and 5 p.m. Monday through Friday, or by writing to: Ardisam, Inc., P.O. Box 666, 1160 Eighth Avenue, Cumberland, WI 54829 for a return material authorization number (RMA#).** All items must be shipped prepaid. Ardisam, Inc., will at no charge, repair or replace, at their discretion, any defective part which falls under the conditions stated above. Ardisam retains the right to change models, specifications and price without notice.

**For replacement parts, phone 800-345-6007  
or go online to [www.yutrax.com](http://www.yutrax.com).**



**TX159 ATV Trailer assembled**

## TX159 PARTS LIST

KEY #	PART #	DESCRIPTION	QTY.
1	300713	WELDMENT, FRONT TRAILER	1
2	300710	WELDMENT, REAR TRAILER	1
3	300704	WELDMENT, TAILGATE TRAILER	1
4	300705	PLATE, SPICE AND AXLE MOUNT TRAILER	2
5	TK80	WELDMENT AXLE TUBE THREADED ATV	1
6	TK48	THREADED AXLE SHAFT FOR ATV TRAILER	2
7	TK81	TONGUE REAR ATV TRAILER	1
8	300700	WELDMENT / TUBE STRUCTURE SIDE RACK TRAILER	4
9	300701	WELDMENT / TUBE STRUCTURE FRONT RACK TRAILER	1
10	TK85	WELDMENT FRONT TONGUE HITCH TONGUE	1
11	TK89	CONNECTOR POCKET ATV TRAILERS	1
12	300724	WELDMENT, TRACKING BEAM BRACE	2
13	TK78	TIRE/WHEEL ASSEMBLY, ATV TAILERS	4
14	16891	TRACKING BEAM ASSEMBLY	2
15	13098	REAR HITCH ASSEMBLY TRAILER	1
16	4166B	BOLT 5/16-18 X 4 HH GR5 BLK ZN	2
17	53610BK	BOLT 5/16-18 X 2-3/4 HH GR5 BLK ZN	1
18	48300B	BOLT 5/16-18 X 2-1/4 HHCS GR5 BLK ZN	2
19	48270B	BOLT 1/4-20 X 2-1/2 HHCS GR5 BLK ZN	2
20	48153B	BOLT 1/4-20 X 2 HHCS GR5 BLK ZN	6
21	48250B	BOLT 1/4-20 X 1-3/4 HHCS GR5 BLK ZN	2
22	48240B	BOLT 1/4-20 X 1-1/2 HHCS GR5 BLK ZN	4
23	4157	NUT-CASTLE 3/4" RETAINER FOR HIGH SPEED	6
24	67538B	NUT 1/4-20 HFNYLK BLK ZN	14
25	60G5NYB	NUT 5/16-18 HNYLK BLK ZN	5
26	4159	WASHER 3/4" SPINDLE SAE	6
27	WF516B	WASHER FLAT 5/16" STANDARD BLACK	7
28	48261B	WASHER FLAT 1/4" BLACK	16
29	4155	PIN COTTER 5/32 X 1 1/2 SUPPLIED W-4099	6



YUTRAX™, Division of Ardisam, Inc.  
1160 8th Avenue, PO Box 666  
Cumberland, WI 54829  
800-345-6007 | Fax 715-822-2223  
E-mail: [info@ardisam.com](mailto:info@ardisam.com)