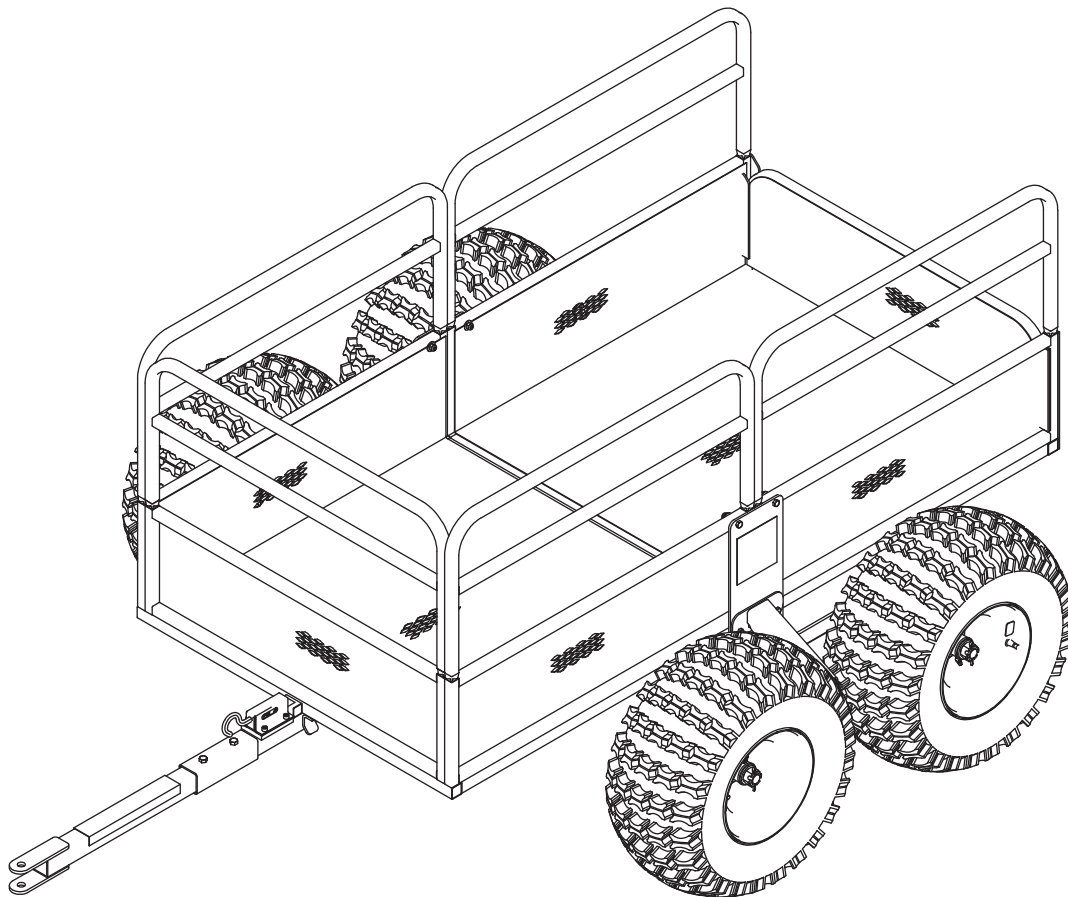




Owner's Manual
**TX159 Four-Wheel
ATV Trailer**
Rated Capacity - 1250lb



Get parts online at
www.yutrax.com



P/N: 22317
REV3: 12/14/18
© 2018 RETI
All Rights Reserved.

YUTRAX™ offers a full line of ATV accessories. We appreciate your purchase of our world class ATV Trailers. Follow these few simple instructions and your product will be sure to give you many years of trouble free pleasure. Instructions should be kept in a safe place and reviewed at least annually.

If for any reason you have a problem with your product, **DO NOT return to the retailer**; contact the YUTRAX™ customer service department Monday through Friday from 8 a.m. to 5 p.m. CST at 800-345-6007 for assistance.

WARNING

READ, UNDERSTAND AND FOLLOW ALL ASSEMBLY, INSPECTION, MAINTENANCE & USE INSTRUCTIONS PROVIDED BEFORE EACH USE. FAILURE TO FOLLOW ALL WARNINGS AND INSTRUCTIONS COULD RESULT IN SERIOUS INJURY OR DEATH.

BE SURE TO FOLLOW ALL INSTRUCTIONS PROVIDED. IF ANY INSTRUCTIONS ARE NOT UNDERSTOOD OR IF YOU HAVE A PARTS ISSUE, CALL 800-345-6007 BEFORE USING.

THE WHEEL BEARINGS ARE NOT FACTORY GREASED. YOU MUST GREASE THE BEARINGS BEFORE USE. CHECK GREASE LEVEL FREQUENTLY TO PREVENT BEARINGS FROM SEIZING.

DOUBLE CHECK THE ASSEMBLY OF YOUR TRAILER TO BE SURE YOU ASSEMBLED IT CORRECTLY AND ALL NUT & BOLT ASSEMBLIES ARE TIGHT BEFORE INITIAL USE.

BE SURE TO PERIODICALLY CHECK ALL NUT AND BOLTS FOR TIGHTNESS. OVER TIME, NUTS AND BOLTS MAY BECOME LOOSE FROM VIBRATION.

BE SURE TO ALWAYS HAVE THE CORRECT AMOUNT OF AIR PRESSURE IN TIRES. THIS WILL HELP DETER FROM UNNECESSARY WEAR AND/OR DAMAGE. AIR PRESSURE CAN BE FOUND ON SIDEWALL OF TIRE.

NEVER DRIVE ON HILLY TERRAIN - EXCESSIVE WEIGHT CAN CAUSE WEIGHT SHIFTS WHICH CAN LEAD TO LOSS OF CONTROL OF YOUR ATV AND/OR ATV TRAILER.

DO NOT DRIVE IN EXCESS OF 10 MPH WHILE USING THIS PRODUCT.

NEVER ALLOW PEOPLE OR ANIMALS TO RIDE IN THE ATV TRAILER! IT IS NOT DESIGNED FOR THAT MATTER.

USE CAUTION NEAR TRAILER TILT LATCH. BE SURE LATCH IS ENGAGED BEFORE EACH USE.

NEVER EXCEED THE MAXIMUM WEIGHT CAPACITY OF 1250 LB OF EVENLY DISTRIBUTED WEIGHT.

ASSEMBLY TIP
FOR EASIER ASSEMBLY, PLACE UNIT UPSIDE DOWN THROUGH STEP 13.

ASSEMBLY INSTRUCTIONS:

Tools needed – two 10mm wrenches, two 13mm wrenches, 20mm socket with ratchet & extension, needle nose pliers and a grease gun.

IMPORTANT ASSEMBLY TIPS:

Do not tighten any nut and bolt combinations completely until all parts are assembled together! Finger tighten plus one turn of a wrench only! This will temporarily hold the lock nut on the bolt while helping alignment of all parts! After all parts are assembled together, all nut & bolt combinations must be completely tightened.

Do initial assembly steps with the trailer frame parts oriented upside down, this will aid in the assembly.

1. Secure the sides of the front trailer frame (1) to the sides of the rear trailer frame (2) using two M6x50mm bolts (20), M6 steel washers (28) and M6 locknuts (24). **SEE FIGURE 1**
2. Secure the bottom of the front trailer frame (1) to the bottom of the rear trailer frame (2) using two M6x65mm bolts (19), M6 steel washers (28) and M6 locknuts (24). **SEE FIGURE 1**

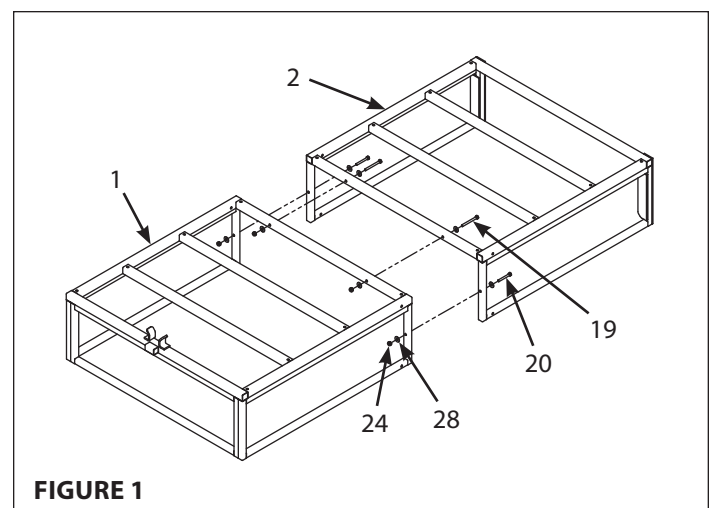


FIGURE 1

3. Attach the top of the two axle mounting plates (4) to the trailer frame assembly with four M6x40mm bolts (22), M6 steel washers (28) and M6 locknuts (24). **SEE FIGURE 2**
4. Insert rear tongue tube (7) into the "u-bracket" on the axle tube (5) and secure with one M8x70mm bolt (17), M8 steel washer (27) and M8 locknut (25). **SEE FIGURE 3**
5. Secure the latch tube assembly (15) to the top of the rear tongue tube (7) with two M8x100mm bolts (16), M8 steel washers (27) and M8 locknuts (25). **SEE FIGURE 3**
6. Insert the latch tube assembly (15) and the front tongue tube (10) into the connector pocket (11) and secure with two M8x60mm bolts (18), M8 steel washers (27) and M8 locknuts (25). **SEE FIGURE 3**
7. Attach the tongue assembly to the frame assembly by inserting the short end of the two axle spindles (6) through the axle mounting plates (4) and threading into the axle tube (5). Thread axle spindles until snug and then loosen until holes in the axle tube and spindles are aligned. Secure the two axle spindles (6) to the axle tube (5) using two M6x45mm bolts (21) and M6 locknuts (24). **SEE FIGURE 4**

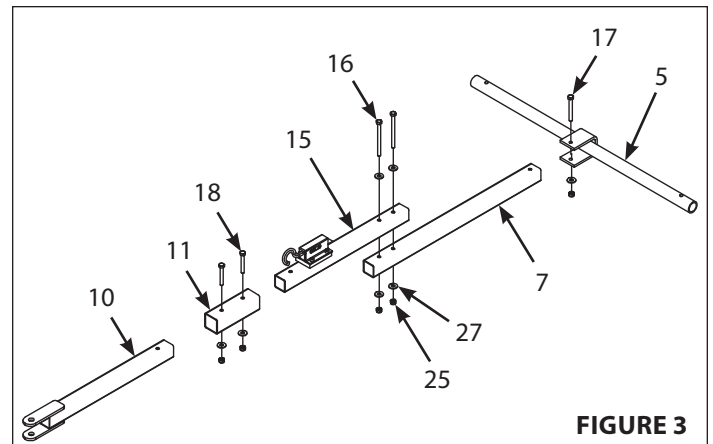


FIGURE 3

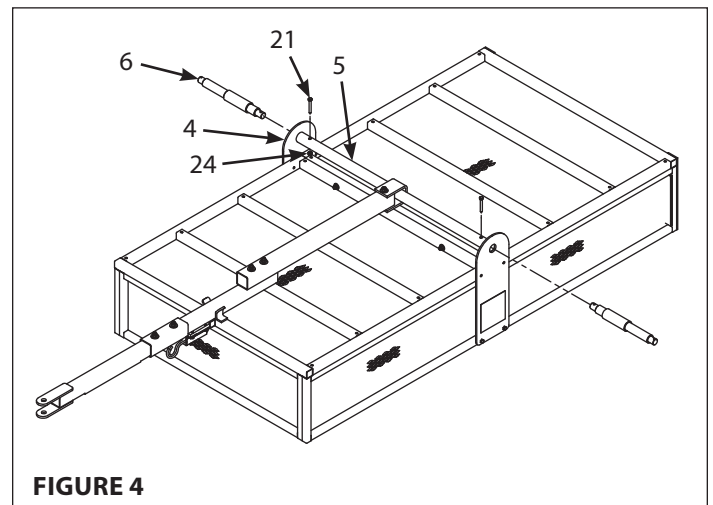


FIGURE 4

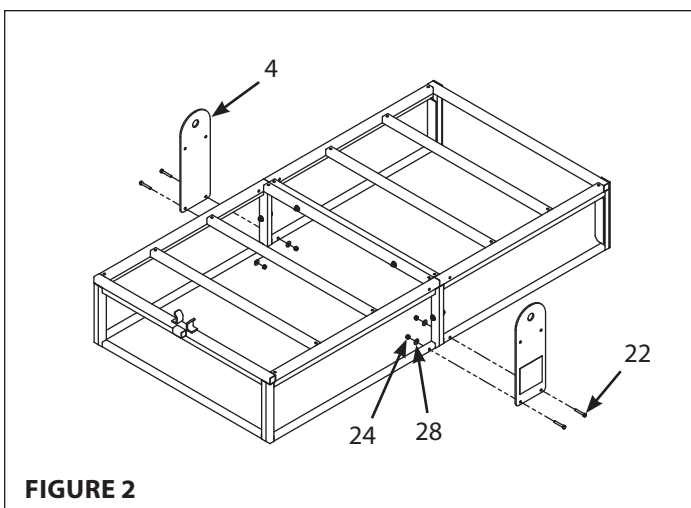


FIGURE 2

8. Slide the tracking beams (14) onto the axle spindles (6). The axles of the tracking beams should be facing outwards. **SEE FIGURE 5**
9. Slide the tracking beam braces (12) over the axle spindles (6) and secure to the trailer frame and axle mounting plates (4) with four M6x50mm bolts (20), M6 steel washers (28) and M6 locknuts (24). The grease fittings of the tracking beams must be facing away from the braces for access. **SEE FIGURE 5**
10. Secure the tracking beams (14) and tracking beam braces (12) to the axle assembly with two 20mm castle nuts (23) and 20mm steel washers (26). Tighten the castle nuts until snug and then back off slightly to allow free movement of the tracking beams and alignment of the cotter pins (29). **SEE FIGURE 5**
11. Insert the cotter pins (29) through the axle spindles (6) and castle nuts (23) so that the head of the cotter pins are seated in the castle nuts. Using a pair of pliers, bend the prongs around the other side of the castle nuts so that the cotter pins cannot fall out. **SEE FIGURE 5**
12. **You must now tighten all nut and bolt assemblies. Be sure not to over tighten or crush tubing when tightening.**
13. Slide the four wheels (13) onto the tracking beam axles (14) with grease fittings and air valves facing outward. Secure with four 20mm castle nuts (23) and 20mm steel washers (26). Tighten the castle nut until snug and then back off slightly to allow free movement of the wheels (13) and cotter pin (29) alignment. **SEE FIGURE 6**
14. Insert the four cotter pins (29) through the tracking beam axles (14) and castle nuts (23) so that the head of each cotter pin is seated in the corresponding castle nut. Using a pair of pliers, bend the prongs of the two cotter pins around the other side of the castle nuts so that the cotter pin cannot fall out. **SEE FIGURE 6**
15. Grease all wheels with a grease gun and high quality bearing grease. Check the grease level frequently to prevent bearings from excessive wear or failure.
16. Slide the removable tailgate (3) into the channels on the rear trailer frame (2). Slide the four side containment racks (8) and the one front containment rack (9) into the corresponding tubes on the trailer frame assembly. **SEE FIGURE 6**

NOTE: Make sure the tire pressure does not exceed the maximum rating written on the tire. Recommended operating pressure is 7 psi.

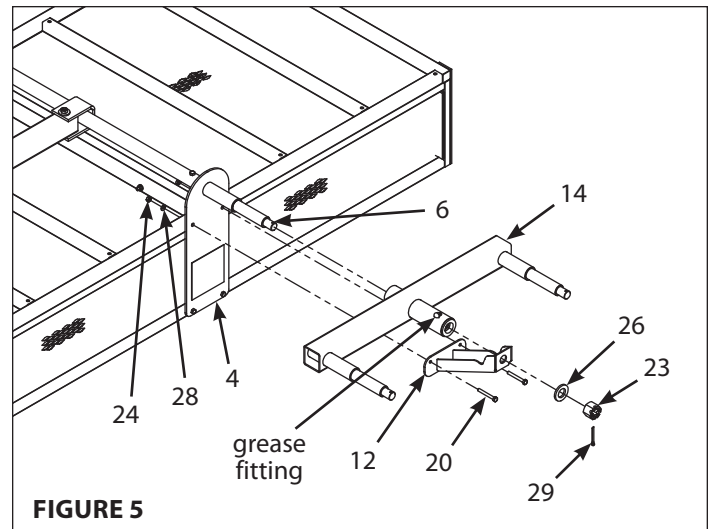


FIGURE 5

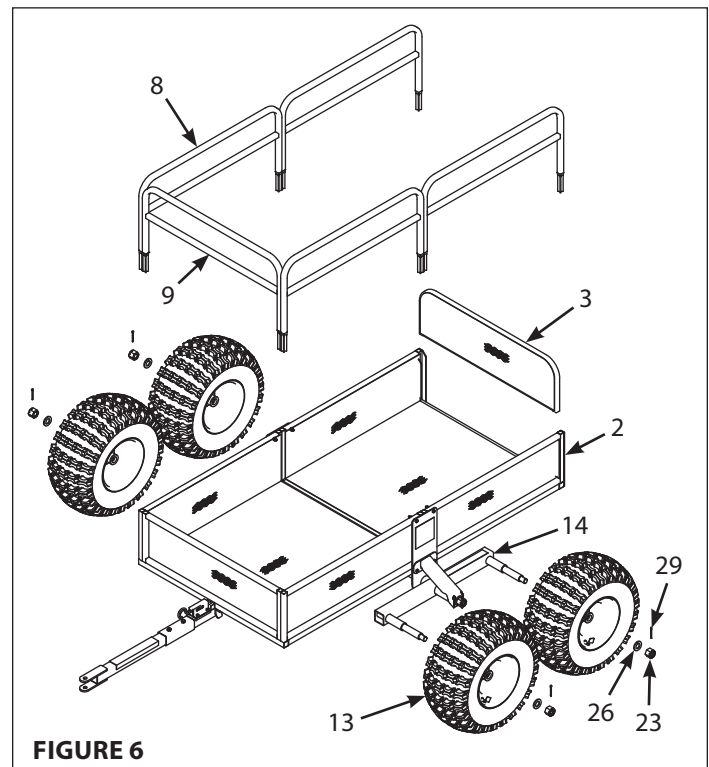


FIGURE 6

OPTIONAL ACCESSORIES

TX113 2" Ball Hitch Kit



Always...

- Be sure the trailer is securely attached to ATV hitch.
- Check tires for correct air pressure before each use.
- Use as four-wheeled ATV trailer only.
- Inspect before each & every use to be sure there is no product damage or loose/missing bolts & hardware.
- Have wheel bearings properly greased to avoid bearings from seizing.

Never...

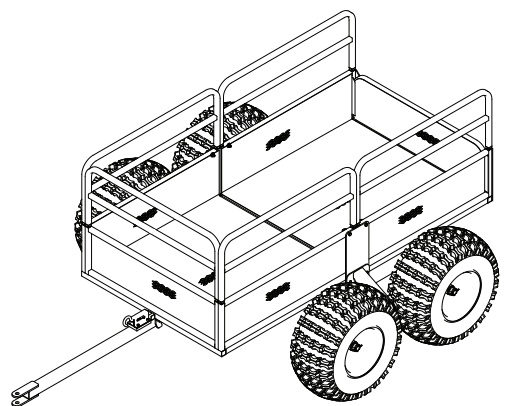
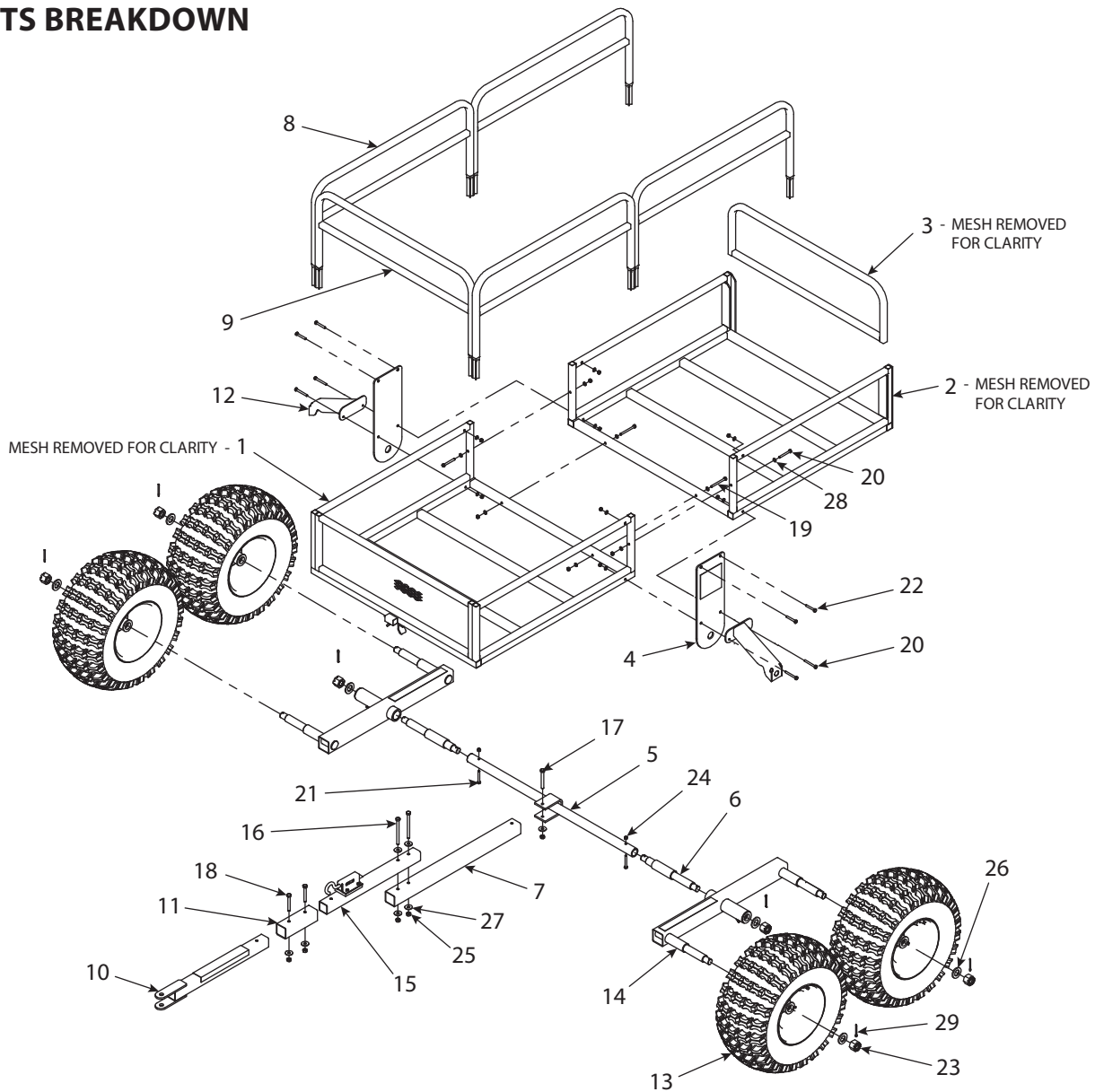
- Use excessive speeds while towing trailer.
- Exceed the maximum load capacity of 1250 lb.
- Allow people or animals to ride in trailer.
- Use on hilly terrain.
- Use a damaged product.
- Use when intoxicated or using over-the-counter medication or prescription drugs.
- Use on rocky or obstacle ridden terrain.
- Use carelessly -- Think Safety!

WARRANTY

YUTRAX™, a division of Ardisam Incorporated, offers a one year limited warranty to be free from defects in materials and workmanship for the service life of the product, not to exceed twelve consecutive months from the date of purchase. This warranty applies to the original owner with a proof of purchase and is not transferable. This warranty applies only to products which have not been subjected to negligent use, misuse, alteration, accident or if repairs have been made by anyone outside our factory. This warranty supersedes all other warranties either expressed or implied and all other obligations or liabilities on our part. Ardisam, Inc., does not assume, and does not authorize any other person to assume for us, any liability in connection with the sale of our products. Warranty work must be sent directly to Ardisam, Inc., or one of our authorized service centers and performed by them. **To obtain warranty service and/or replacement instructions, you must have prior approval from Ardisam, Inc., before shipping your package to us by calling our customer service department at 800-345-6007 between 8 a.m. and 5 p.m. Monday through Friday, or by writing to: Ardisam, Inc., P.O. Box 666, 1160 Eighth Avenue, Cumberland, WI 54829 for a return material authorization number (RMA#).** All items must be shipped prepaid. Ardisam, Inc., will at no charge, repair or replace, at their discretion, any defective part which falls under the conditions stated above. Ardisam retains the right to change models, specifications and price without notice.

For replacement parts, phone 800-345-6007 or go online to www.yutrax.com.

PARTS BREAKDOWN



TX159 ATV Trailer assembled



PARTS LIST

KEY #	PART #	DESCRIPTION	QTY.
1	300713	FRONT TRAILER FRAME	1
2	300710	REAR TRAILER FRAME	1
3	300704	TAILGATE	1
4	300705	AXLE MOUNTING PLATE	2
5	TK80M	AXLE TUBE	1
6	TK48M	AXLE SPINDLE	2
7	TK81	REAR TONGUE TUBE	1
8	300700	SIDE CONTAINMENT RACK	4
9	300701	FRONT CONTAINMENT RACK	1
10	TK85	FRONT TONGUE TUBE	1
11	TK89	CONNECTOR POCKET	1
12	300724	TRACKING BEAM BRACE	2
13	TK78	TRAILER WHEEL	4
14	16891M	TRACKING BEAM	2
15	13098	LATCH TUBE ASSEMBLY	1
16	22338	BOLT M8 X 1.25 X 100	2
17	22337	BOLT M8 X 1.25 X 70	1
18	22336	BOLT M8 X 1.25 X 60	2
19	22335	BOLT M6 X 1.0 X 65	2
20	22334	BOLT M6 X 1.0 X 50	6
21	22332	BOLT M6 X 1.0 X 45	2
22	22331	BOLT M6 X 1.0 X 40	4
23	22363	CASTLE NUT M20 X 1.5	6
24	11499	NUT M6 X 1.0	14
25	22339	NUT M8 X 1.25	5
26	22352	WASHER M20	6
27	22340	WASHER M8	7
28	11498	WASHER M6	16
29	4155	COTTER PIN	6



YUTRAX™, Division of Ardisam, Inc.
1160 8th Avenue, PO Box 666
Cumberland, WI 54829
800-345-6007 | Fax 715-822-2223
E-mail: info@ardisam.com