



2" ATV Trailer Ball Hitch Kit (TX112)

CONGRATULATIONS! You have just purchased the YUTRAX 2" Trailer Ball Hitch Kit TX112. Just follow these simple directions for use and your ball hitch will give you many years of trouble-free pleasure. Save these instructions for future reference.

If for any reason you have a problem with your product, DO NOT return to the retailer, contact the YUTRAX customer service department at 800-345-6007 M-F from 8 a.m. to 5 p.m. for assistance.

ASSEMBLY INSTRUCTIONS:

Tools needed -- two 9/16" wrenches

1. Attach the ball adaptor weldment (TK132) to the inside of the ball hitch coupler (TK133) using the (2) provided 3/8-16 x 3" bolts, nyloc nuts and (4) washers. **DO NOT TIGHTEN COMPLETELY.** Watch orientation of parts. **SEE FIGURE 1.**
2. Secure the previously assembled adaptor weldment/coupler to the pin hitch tongue plates by inserting the assembly in-between the welded on pin hitch plates of the trailer tongue. **SEE FIGURE 2.** Use the (1) provided 3/8-16 x 2-1/2" bolt, nyloc nut and (2) washers to secure assembly to the tongue. **YOU MAY NOW TIGHTEN ALL NUT & BOLT COMBINATIONS SECURELY.** Do not overtighten.

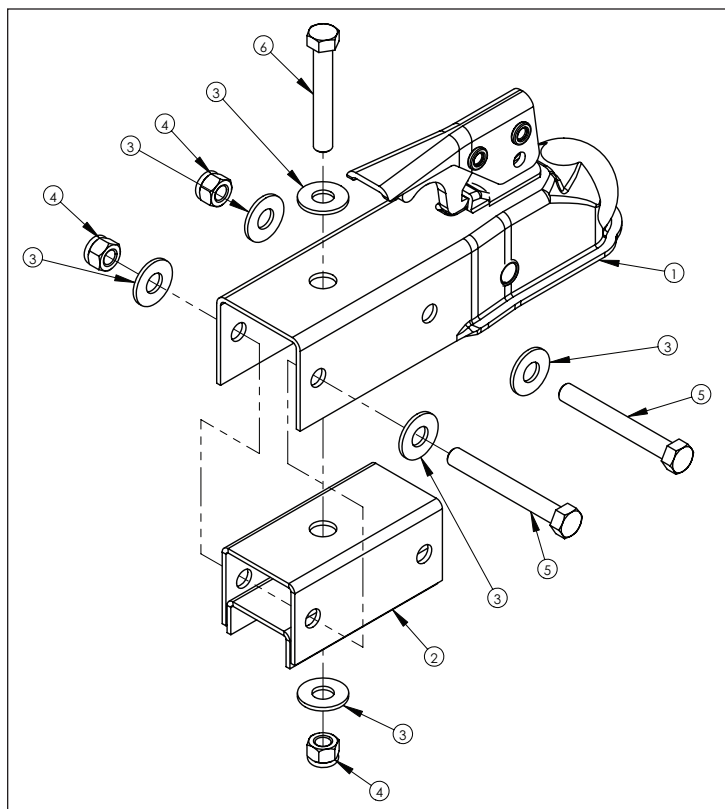


Figure 1: Exploded view

! WARNING

READ AND UNDERSTAND ALL ASSEMBLY, INSPECTION, & USE INSTRUCTIONS PROVIDED BEFORE EACH USE. IF ANY INSTRUCTIONS ARE NOT UNDERSTOOD OR IF YOU HAVE A PARTS ISSUE CALL 800-345-6007 BEFORE USING. FAILURE TO FOLLOW INSTRUCTIONS COULD RESULT IN SERIOUS INJURY OR DEATH.

DOUBLE CHECK ASSEMBLY STEPS TO BE CERTAIN YOU HAVE CORRECTLY ASSEMBLED THIS PRODUCT.

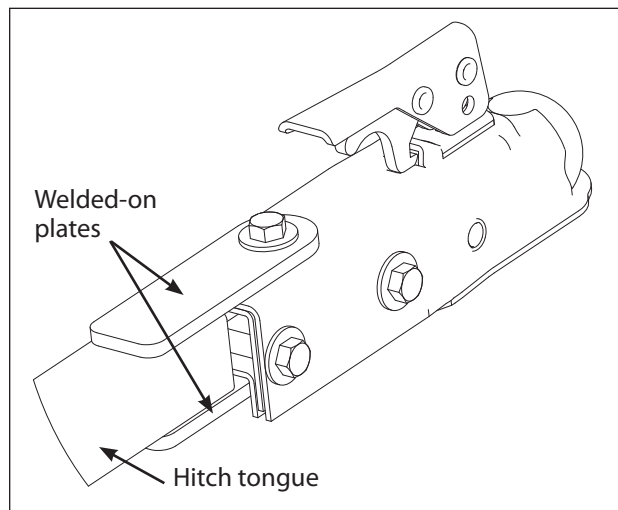


Figure 2: Completed view

KEY #	PART #	DESCRIPTION	QTY.
1	TK133	HITCH, 2" BALL ADAPTER	1
2	TK132	WELDMENT, BALL ADAPTER BRACKET	1
3	WF38	WASHER FLAT 3/8 STANDARD ZINC	6
4	1662	NUT 3/8-16 NYLOCK	3
5	4359	BOLT 3/8-16 X 3 HHCS	2
6	300851	BOLT 3/8-16 X 2-1/2 HH GR5 ZN	1

