



Illustrated Parts Breakdown  
Illustration des pièces détachées

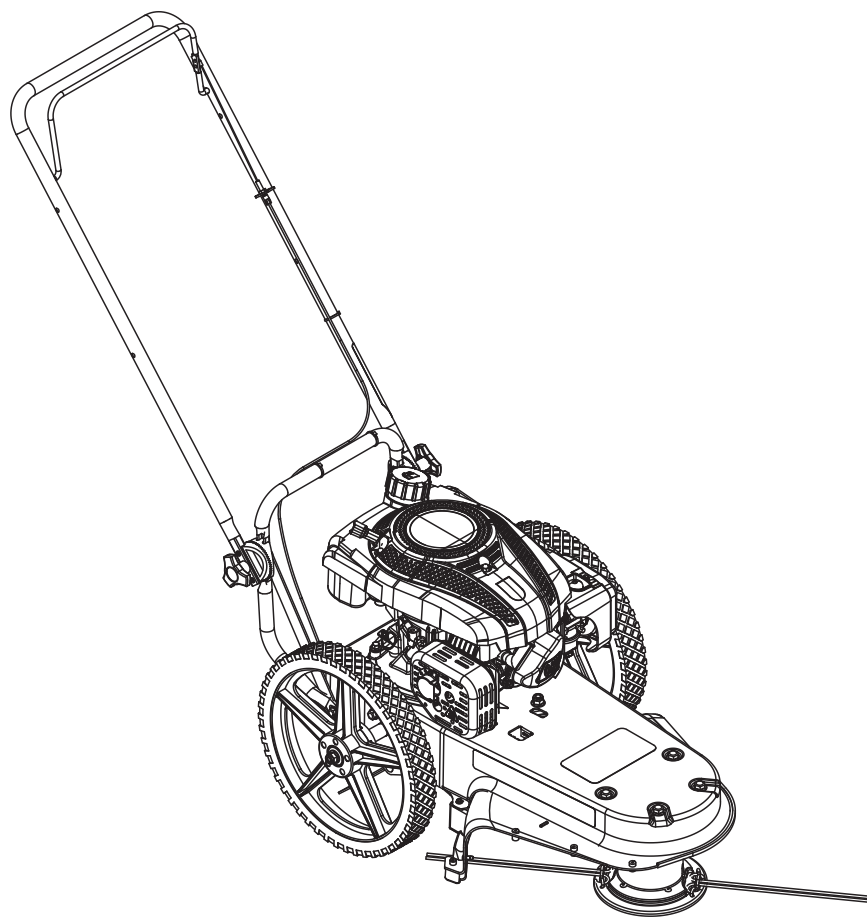
## String Mower

Model Numbers, Numéros de modèle :  
**35258**

ENGLISH

FRANÇAIS

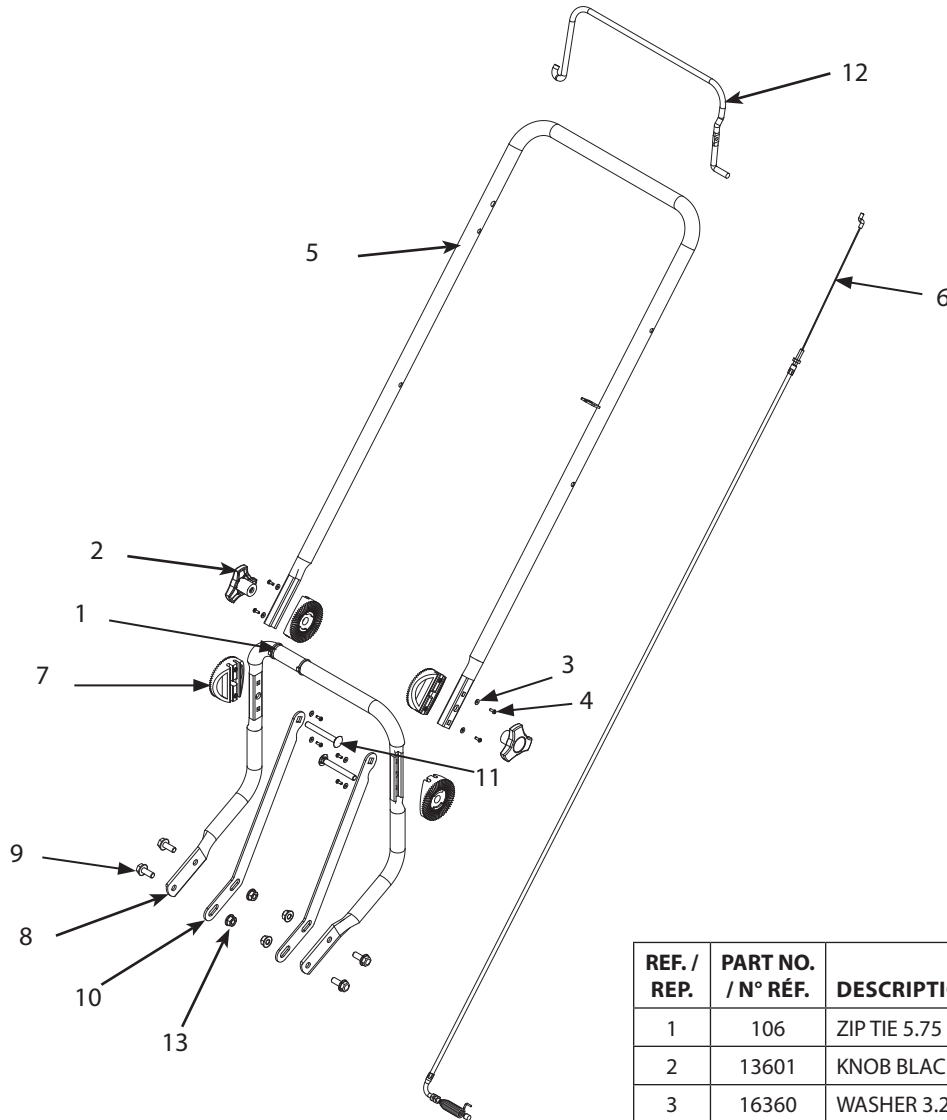
S/N



Get parts or technical assistance online at  
[www.tazzoutdoorproducts.com](http://www.tazzoutdoorproducts.com) or call (800) 345-6007  
Pièces détachées et assistance technique en ligne à  
[www.tazzoutdoorproducts.com](http://www.tazzoutdoorproducts.com) ou composer le (800) 345-6007

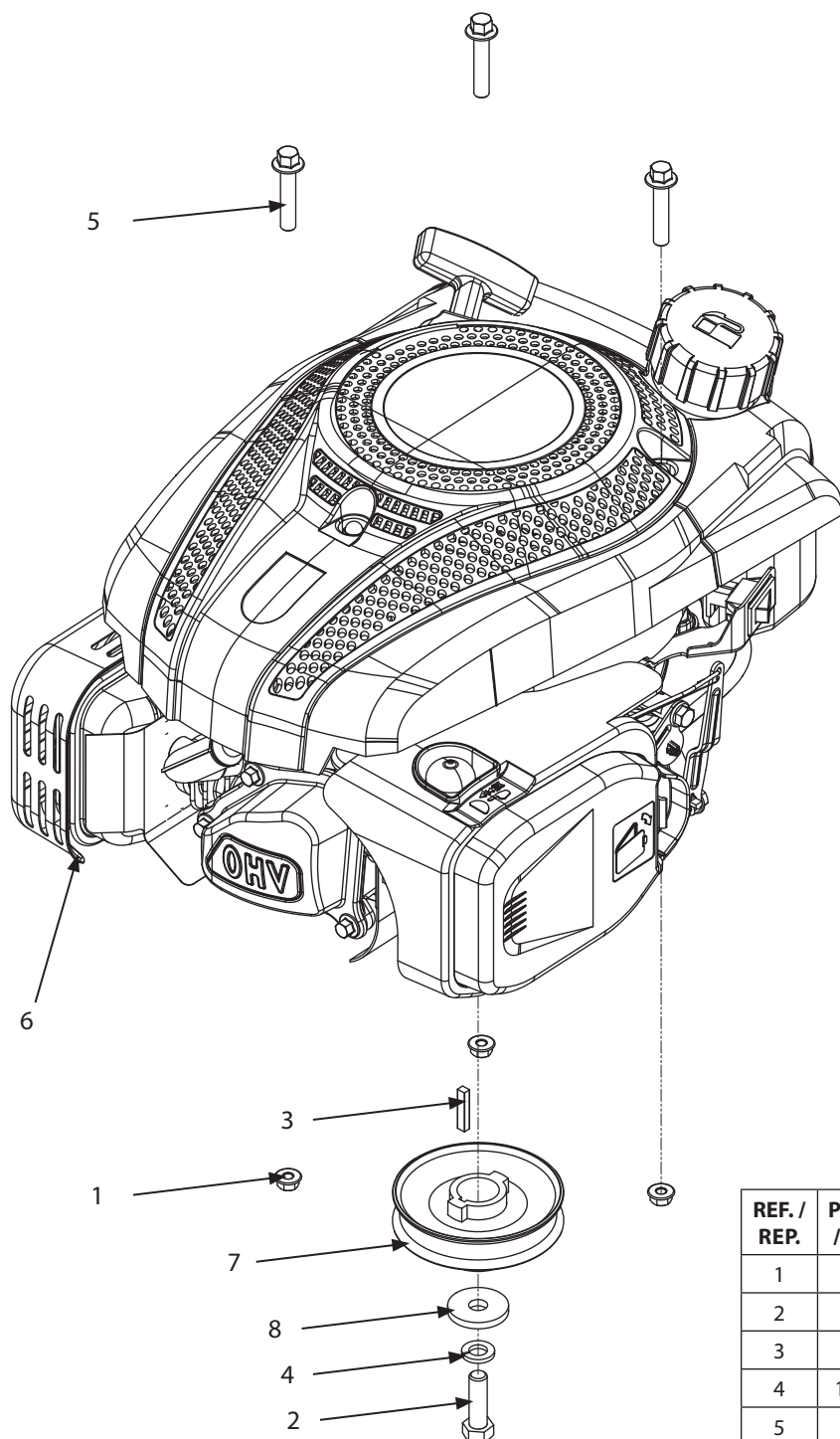
© 2020 Ardisam  
All Rights Reserved  
Tous droits réservés  
P/N: 35271  
ECN: 12645  
REV 1: 12/2/2019

**ILLUSTRATED PARTS BREAKDOWN / ILLUSTRATION DES PIÈCES DÉTACHÉES - Handlebar Assembly**



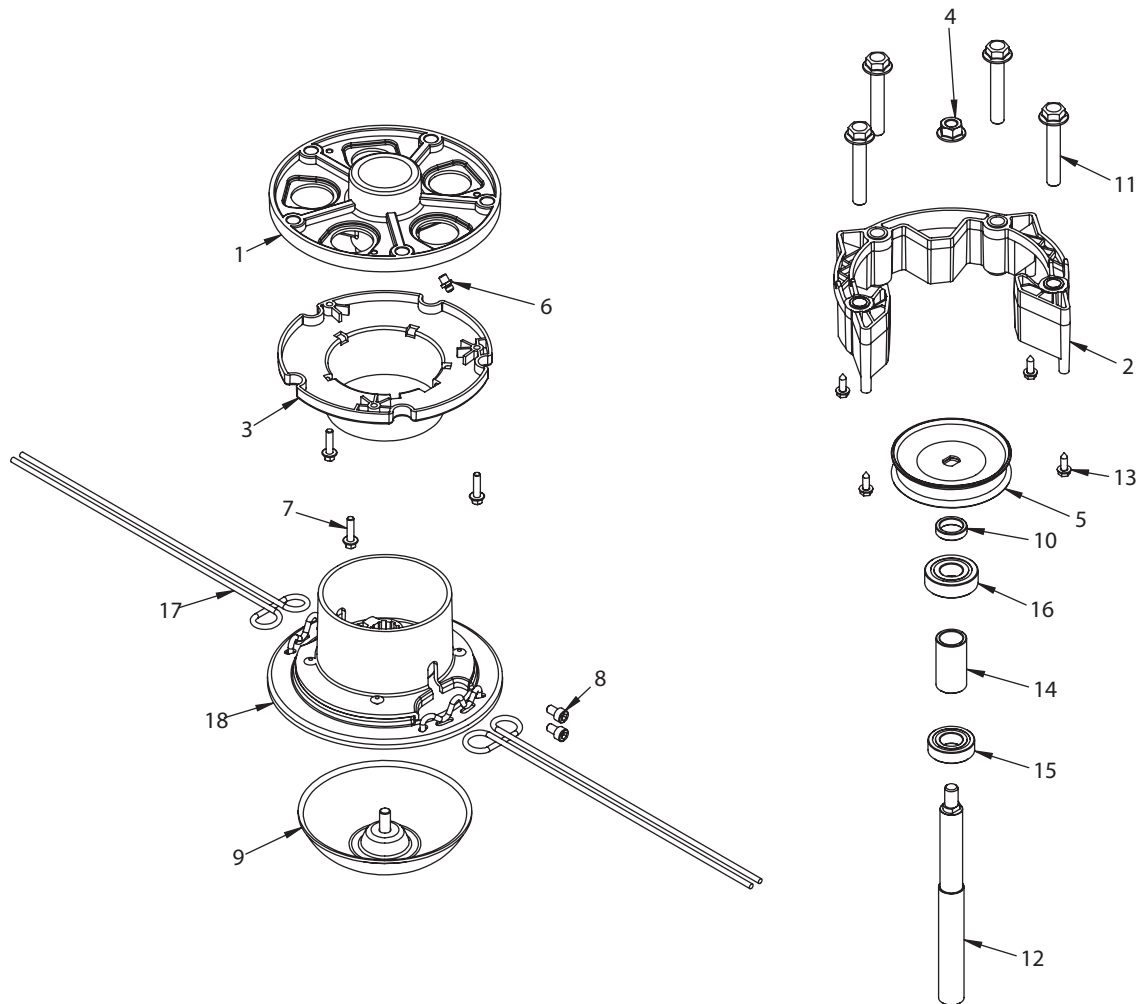
REF. / REP.	PART NO. / N° RÉF.	DESCRIPTION	QTY. / QTÉ
1	106	ZIP TIE 5.75 IN BLACK PLASTIC	3
2	13601	KNOB BLACK THREE STAR M8 X 1.25 - 6H	2
3	16360	WASHER 3.2X10X0.8 MM GR8.8 ZN	8
4	16397	SCREW M3X10 MM PPHAB ZN	8
5	17526	HANDLEBAR UPPER STRING MOWER	1
6	17527	CABLE CLUTCH STRING MOWER	1
7	19912	HANDLE PIVOT PLASTIC MOLDING	4
8	19941	HANDLEBAR LOWER CAM ADJUST	1
9	19945	BOLT M8X1.25X20 MM HHF GR8.8 ZN F-T	4
10	27683	HANDLEBAR BRACE TRIMMER	2
11	27800	BOLT M8X1.25X65 MM CRG GR8.8 ZN F-T	2
12	35277	TWO HOLE LEVER ENGAGE GREEN	1
13	64132	NUT M8X1.25X10.75 MM HSFNYLK CL8 ZN	4

## ILLUSTRATED PARTS BREAKDOWN / ILLUSTRATION DES PIÈCES DÉTACHÉES - Engine and Pulley Assembly



REF. / REP.	PART NO. / N° RÉF.	DESCRIPTION	QTY. / QTÉ
1	16400	NUT M8 X 1.25 MM HSF NYLK GR8.8 ZN	3
2	16510	BOLT 3/8-24X1IN HSF GR8.8 ZN	1
3	16602	KEY 4M X 5M STEEL	1
4	1916965	WASHER 3/8 IN SPRLK GR8.8 ZN	1
5	19922	BOLT M8 X 1.25 X 40 HHFCS GR8.8 ZN P-T	3
6	27787	ENGINE 150CC VERTICAL SHAFT RV150	1
7	29610	PULLEY ENGINE 22.25ID X 90OD 3L CAST	1
8	331040	WASHER 10 X 32 X 4 MM GR8.8 ZN	1

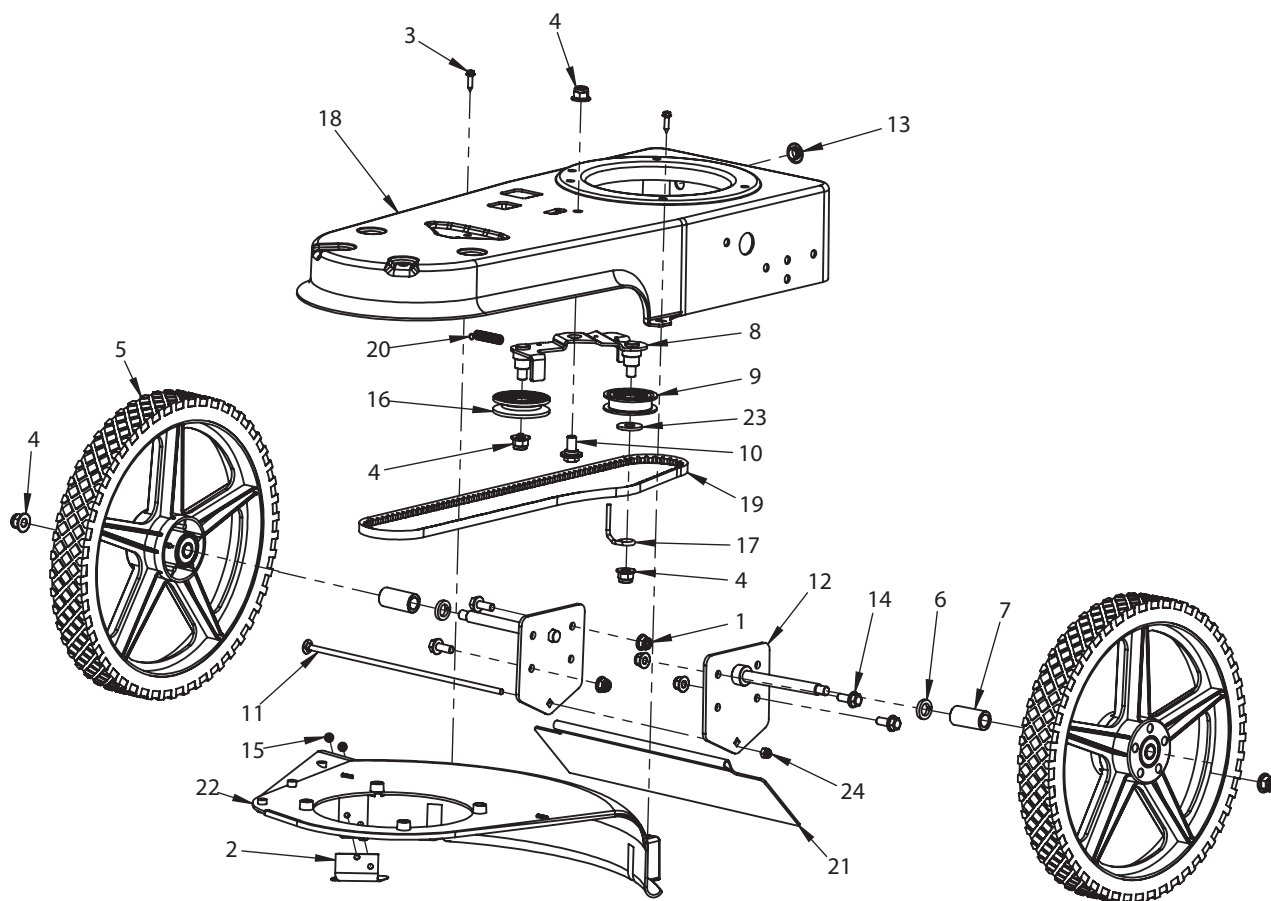
**ILLUSTRATED PARTS BREAKDOWN / ILLUSTRATION DES PIÈCES DÉTACHÉES - Mower Head**



REF. / REP.	PART NO. / N° RÉF.	DESCRIPTION	QTY. / QTÉ
1	16317	HOUSING JACKSHAFT STRING TRIMMER	1
2	16318	JACKSHAFT SPACER STRING TRIMMER	1
3	16337	WEED WRAP STRING TRIMMER	1
4	16391	NUT M10X1.5X13 MM HFNYLK GR8.8 ZN	1
5	16595	PULLY ASSEMBLY STRING TRIMMER	1
6	16598	FITTING GREASE STRAIGHT M6X1.0	1
7	16779	BOLT M5X0.8X20 MM HSF GR8.8 ZN F-T	3
8	19919	BOLT M6X1.0X12 MM SHCS GR8.8 BLK OX F-T	2
9	19923	HEIGHT GUIDE ASSEMBLY METRIC	1
10	19925	SPACER M17.5 X 23.5 X 6 MM STEEL	1

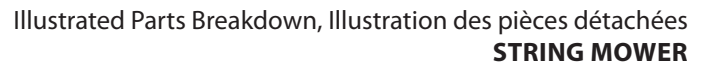
REF. / REP.	PART NO. / N° RÉF.	DESCRIPTION	QTY. / QTÉ
11	19927	BOLT M10X1.5X60 MM HHF GR8.8 ZN P-T	4
12	19928	CUTTING HEAD SHAFT M10 X 1.5 TOP THREAD	1
13	19931	SCREW M5 X 3 X 15 PHWH AB	4
14	19960	SPACER JACKSHAFT	1
15	23129	BEARING BALL 6003-2RS 20X42X10 MM	1
16	23131	BEARING BALL 6203-2RS 17X40X12 MM	1
17	31619	LINE TRIM .155 X 21.25 IN RED TWISTED	2
18	35273	ASSY BASE CUTTING HEAD GREEN	1

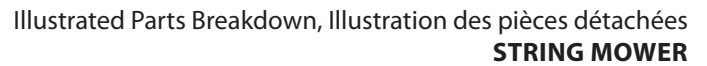
## ILLUSTRATED PARTS BREAKDOWN / ILLUSTRATION DES PIÈCES DÉTACHÉES - Base Unit



REF. / REP.	PART NO. / N° RÉF.	DESCRIPTION	QTY. / QTÉ
1	16400	NUT M8X1.25X10.35 MM HFNLYK CL8 ZN	4
2	16540	CUTTER LINE STRING TRIMMER	1
3	16889	SCREW 4.8-1.6 X 20 PHH A GR8.8 ZN	2
4	16903	NUT M10X1.5X13.5 MM HFNLYK CL8 ZN	5
5	18773	KIT WHEEL & BEARINGS MOWER SPARKLE GREY	2
6	18898	WASHER M14 X 22 X 3.8 SPRLK ZN	2
7	19904	SPACER WHEEL 14 X 22 X 43MM STEEL	2
8	19932	IDLER ASSEMBLY DBL/ZINC METRIC	1
9	19934	ASSEMBLY 3L PULLEY AND BEARING	1
10	19936	BOLT M10X1.5X20 MM HHFSHLDR GR8.8 ZN	1
11	19937	BOLT M6X1.0X285 MM CRG GR8.8 ZN P-T	1
12	19938	ASSEMBLY AXLE AND BRACKET METRIC	2

REF. / REP.	PART NO. / N° RÉF.	DESCRIPTION	QTY. / QTÉ
13	19944	BUSHING M12 X 23 RUBBER	1
14	19945	BOLT M8X1.25X20 MM HHF GR8.8 ZN F-T	4
15	19953	RIVET M5 X 10	2
16	19968	ASSEMBLY IDLER PULLEY AND BEARING 3L	1
17	25038	WIREFORM 4MM BELT GUIDE VERSA	1
18	35818	DECK FRAME STRING MOWER GREEN	1
19	60005003	BELT V 3L1155 TOOTH	1
20	60005008	SPRING EXTENSION 1.5LG	1
21	60005018	TRAILING SHIELD 13.28 V	1
22	60005021	SHIELD TRIMMER BLK	1
23	W1200126	WASHER M10X21.25X1.33 MM GR8.8 ZN	1
24	W1265V0913	NUT M6X1.0X8 MM HNYLK CL8 ZN	1

This image shows a single sheet of white paper with horizontal ruling lines. The lines are evenly spaced and run across the width of the page. There are no margins, text, or other markings on the paper.

[illegible]



**ARDISAM, INC.**  
1160 Eighth Avenue  
PO Box 755  
Cumberland, WI 54829

Phone, Téléphone : (800) 345-6007  
Fax, Télécopieur : (715) 822-2124  
[www.tazzoutdoorproducts.com](http://www.tazzoutdoorproducts.com)