

# VIPER<sup>®</sup>

## ENGINES

Illustrated Parts Breakdown  
Illustration des pièces détachées

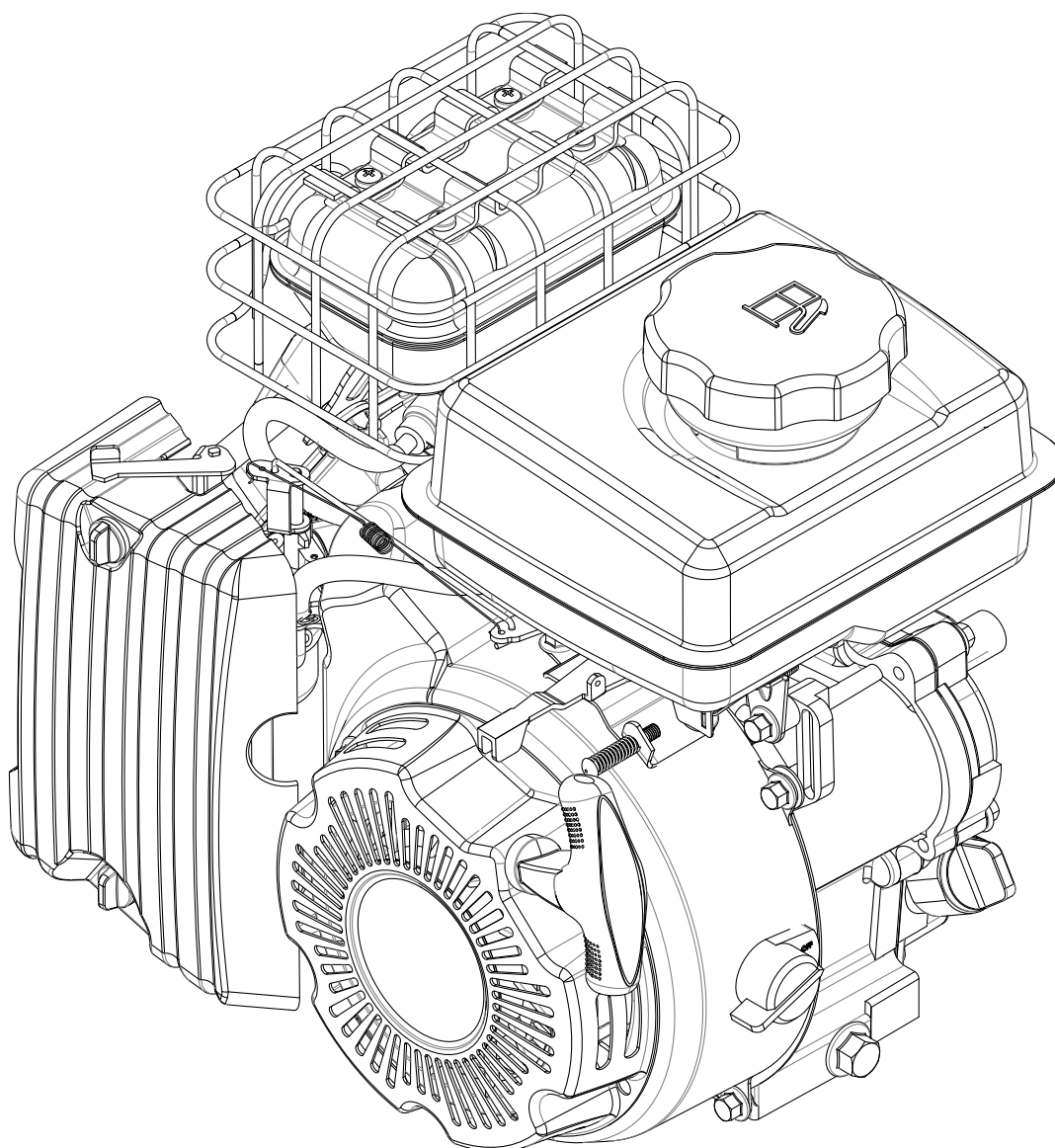
**99CC 4-CYCLE**  
Viper Engine

Model Numbers, Numéros de modèle :  
**31767**

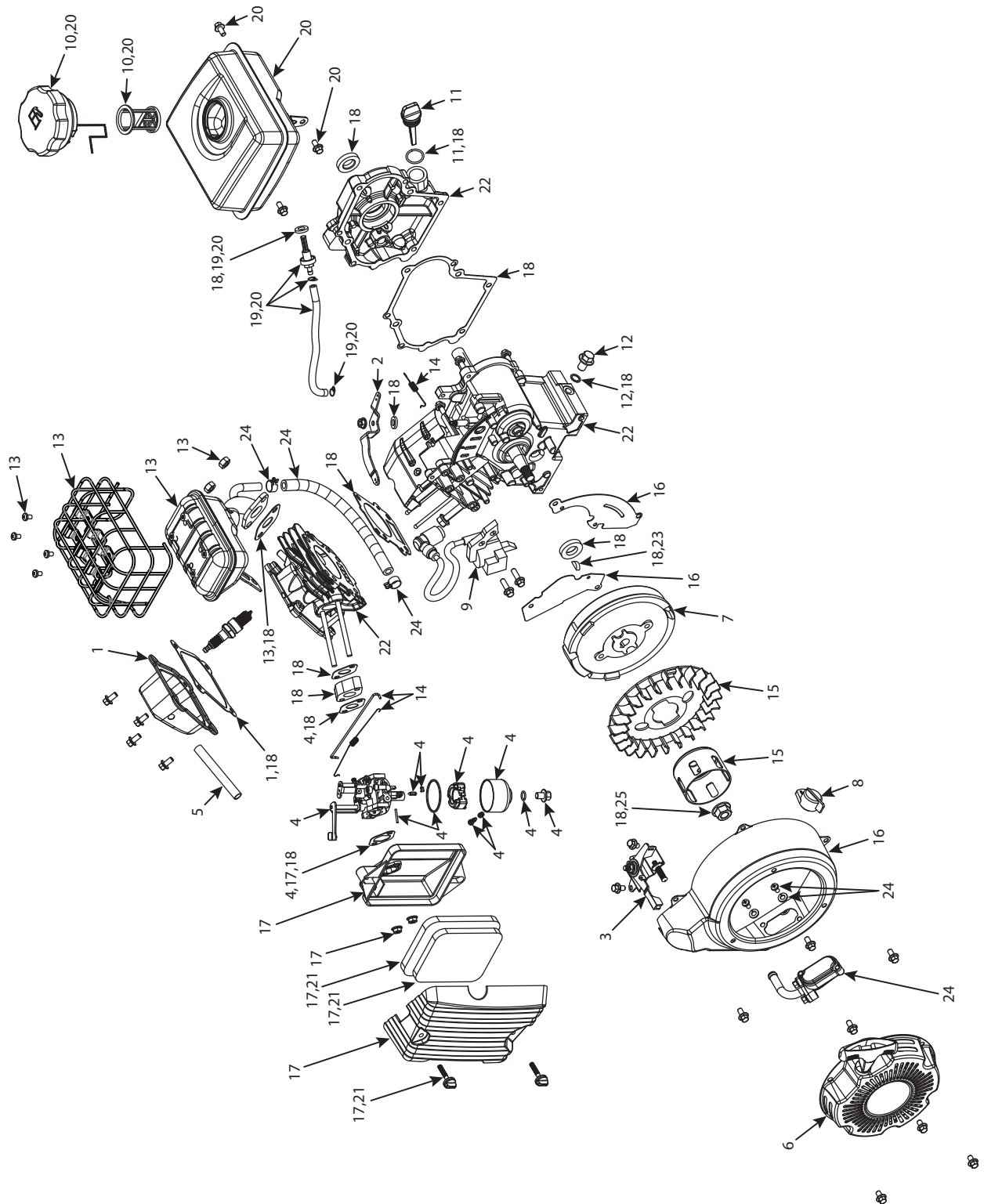
ENGLISH

FRENCH

S/N



## ILLUSTRATED PARTS BREAKDOWN ILLUSTRATION DES PIÈCES DÉTACHÉES



REF NO.	PART NO.	DESCRIPTION	QTY.
REP.	N° RÉF.	DESCRIPTION	QTÉ
1	10060	KIT VALVE COVER	1
2	10066	GOVERNOR ARM	1
3	10067	THROTTLE CONTROL	1
4	31789	KIT CARBURETOR REPLACEMENT	1
5	31788	VACUUM BREATHER TUBE	1
6	10095	RECOIL ASSEMBLY	1
7	10099	FLYWHEEL	1
8	67069	ENGINE CUTOFF SWITCH	1
9	26272	IGNITION COIL	1
10	25568	KIT CAP FUEL TANK CARB	1
11	10118	DIPSTICK WITH SEAL	1
12	10119	OIL PLUG WITH SEAL WASHER	1
13	31768	KIT MUFFLER	1
14	10146	KIT THROTTLE CONTROL SPRINGS	1
15	10147	KIT STARTER CUP AND BLOWER FAN	1
16	10148	KIT BLOWER HOUSING	1
17	31790	KIT AIR CLEANER	1
18	13925	KIT ENGINE GASKETS	1
19	13896	KIT FUEL LINE AND FILTER	1
20	26413	KIT FUEL TANK	1
21	31791	KIT REPLACEMENT AIR FILTER ELEMENT	1
22	-	SHORT BLOCK (FOR REFERENCE ONLY)	1
23	10100	FLYWHEEL KEY	1
24	13898	KIT AUXILIARY AIR INTAKE	1
25	6274	NUT M12 X 1.25 HSF GR8.8 ZN	1
-	31792	KIT ENGINE VIPER 99CC	1
-	13975	KIT ALTITUDE 3000-6000 FT	1
-	13976	KIT ALTITUDE 6000-8000 FT	1

# **VIPER<sup>®</sup>**

## **ENGINES**

**ARDISAM, INC.**  
1160 Eighth Avenue  
PO Box 755  
Cumberland, WI 54829

Phone, Téléphone : (800) 345-6007  
Fax, Télécopieur : (715) 822-2124  
[www.GetEarthquake.com](http://www.GetEarthquake.com)