

## ONE YEAR LIMITED WARRANTY

Ardisam, Inc., warrants this Territory blind under a one-year limited warranty to be free from defects in materials or workmanship or both for a period not exceeding twelve consecutive months from the date of original purchase by the first retail consumer or commercial end user. "Consumer use" means personal recreational use by a retail consumer. "Commercial use" or "commercial application" means all other uses, including use for commercial, income producing or rental purposes. Once a product has experienced commercial use, it shall thereafter be considered as a commercial use product for purposes of this warranty. This warranty does not cover cracked windows, tent tears, or bent poles due to use in high wind, inclement weather conditions, unattended use or uses other than those listed in the owner's manual. This warranty applies to the original owner that provides a proof of purchase of the shelter. The warranty is not transferable. The warranty period begins on the date of purchase by the first retail consumer or commercial end user, and continues for the twelve month consecutive period thereafter. Any unit used in a commercial application is covered for a period of 90 days after purchase. For the warranty to be valid, the warranty card must be filled out and received by Ardisam, Inc., within 30 days of purchase. Ardisam, Inc. shall not be obligated to ship any repair or replacement product to any location outside of the United States of America or Canada.

*\*This warranty applies only to products which have not been subjected to negligent use, misuse, uses other than those indicated in the product's owner's manual, alteration, accident, use of unauthorized parts, failure to perform periodic maintenance as specified in product's owner's manual, normal wear and tear, or repairs performed at non-authorized service centers. There is no other expressed warranty. Implied warranties, including those of merchantability and fitness for a particular purpose, are limited to one year from purchase, or to the extent permitted by law. All other implied warranties are excluded. Liability for incidental or consequential damages are excluded to the extent exclusion is permitted by law. Ardisam, Inc. does not assume, and does not authorize any other person to assume for us, any liability in connection with the sale of our products. To obtain warranty service, you must have prior approval by calling our customer service department at 1-800-345-6007. If you choose to ship your product to Ardisam for warranty repair, you must first have prior approval from Ardisam by calling our customer service department for a return material authorization number (RMA#). Under these circumstances, all items must be shipped prepaid. Ardisam will at no charge, repair or replace, at their discretion, any defective part which satisfies all conditions stated above. Ardisam retains the right to change models, specifications and price without notice. Ardisam, Inc. shall not be obligated to ship any repair or replacement product to any location outside of the United States of America or Canada.*

**TERRITORY**

Owner's Manual  
**Territory™ Blinds**

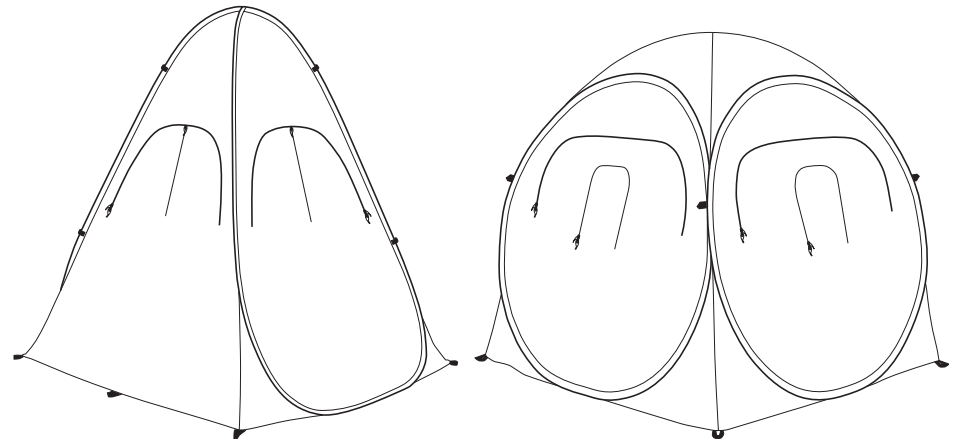
Territory™ - A Division of Ardisam, Inc.  
1160 Eighth Avenue, PO Box 666  
Cumberland, WI 54829  
800-345-6007 | Fax 715-822-4180  
Email: info@ardisam.com

\*All weights, specifications and features are approximate and are subject to change without notice. Due to continuous product improvements, product images may not be exact. Warning labels in some product images may have been removed for photography purposes only. Props shown in photos not included. Some assembly may be required.

**TERRITORY™**

## Owner's Manual Territory™ Blinds

**If for any reason you have a problem with your product, DO NOT return to the retailer; contact the Territory customer service department at 800-345-6007, Monday through Friday from 8 a.m. to 5 p.m., for assistance.**



### WARNING

READ, UNDERSTAND AND FOLLOW ALL ASSEMBLY, INSPECTION, & USE INSTRUCTIONS PROVIDED BEFORE EACH USE. FAILURE TO FOLLOW WARNINGS AND INSTRUCTIONS COULD RESULT IN SERIOUS INJURY OR DEATH.

THIS PRODUCT IS FOR HUNTING PURPOSES ONLY! IT IS NOT TO BE USED AS A CAMPING TENT OR FOR ANY OTHER FUNCTION.

THIS BLIND IS DESIGNED FOR PORTABILITY. DO NOT LEAVE BLIND SETUP OUTDOORS WHEN NOT IN USE.

DO NOT USE FIREARMS TO SHOOT THROUGH THE REMOVABLE SHOOT-THROUGH MESH WINDOWS. THE SHOOT-THROUGH WINDOWS ARE INTENDED FOR ARCHERY USE WITH FIXED BLADE BROAD HEADS ONLY!

NEVER ALLOW THE MATERIAL TO COVER YOUR FACE. THIS MATERIAL CAN CAUSE SUFFOCATION AND DEATH IF IT IS PLACED OVER FACE.

DO NOT USE DEVICES THAT PRODUCE FUMES INSIDE OF BLIND. VAPORS CAN CAUSE SUFFOCATION AND DEATH! MONOXIDE POISONING, SERIOUS INJURY OR DEATH!

### WARNING

THIS PRODUCT IS NOT FIREPROOF. THE FABRIC WILL BURN IF IT COMES INTO CONTACT WITH AN OPEN FLAME OR FUEL SOURCE. KEEP PRODUCT AWAY FROM DIRECT FLAME. FAILURE TO FOLLOW THIS WARNING MAY RESULT IN SERIOUS INJURY OR DEATH!

DO NOT ALLOW CHILDREN OR ADULTS TO USE LIGHTED CANDLES, MATCHES OR OTHER SOURCES OF FIRE NEAR THIS PRODUCT.

NEVER ALLOW CHILDREN TO PLAY IN THIS PRODUCT WITHOUT ADULT SUPERVISION. TO DO SO COULD CAUSE SERIOUS INJURY OR DEATH.



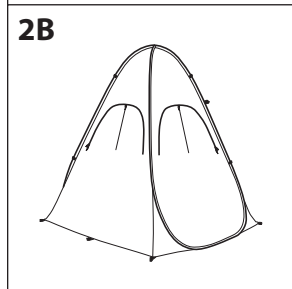
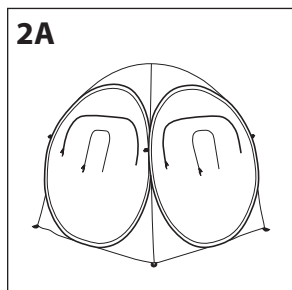
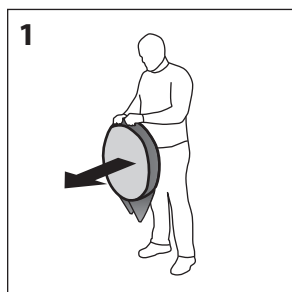
P/N: 27489  
REV2: 01/26/17  
© 2017 Ardisam, Inc.  
All Rights Reserved

## SET-UP INSTRUCTIONS:

1. Remove the blind from carrying bag.
2. Hold one of the outside rings and release the other rings away from you. **SEE FIGURE 1.**

**NOTE: The blind will pop open! Use caution.**

3. Spread open the blind and anchor down with metal stakes through the tie down loops located at the bottom of blind. **SEE FIGURES 2A AND 2B.**
4. Extra stakes and tie down ropes are included for high wind situations. Attach ropes to the loops located on the outside of the blind at each corner, halfway up from the ground.



## UV WARNING

ULTRAVIOLET LIGHT BREAKS DOWN LIGHTWEIGHT FABRIC FIBERS. THE MATERIAL WILL FADE, LOSE STRENGTH AND EVENTUALLY DISINTEGRATE IF LEFT IN PROLONGED SUNLIGHT. TO EXTEND THE LIFE OF YOUR GROUND BLIND, AVOID LEAVING IT OUT IN DIRECT SUNLIGHT FOR EXTENDED PERIODS OF TIME. SET IT UP IN A SHADY AREA WHENEVER POSSIBLE. FADING OR DISCOLORING OF BLIND IS NOT COVERED UNDER YOUR WARRANTY.

## WARNING

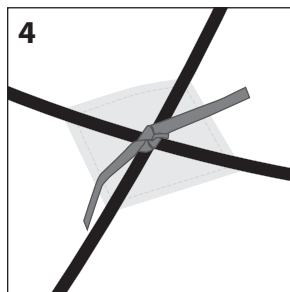
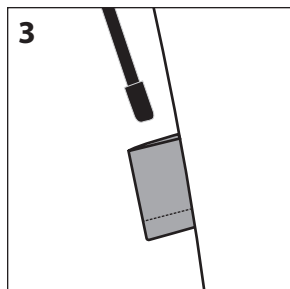
THIS BLIND IS MADE WITH A HEAVY SPRING STEEL FRAME THAT SPRINGS OPEN DURING SET-UP. USE CAUTION WHEN SETTING UP. KEEP AWAY FROM BODY AND FACE. KEEP CLEAR OF OTHER PEOPLE WHILE SETTING UP.

ALWAYS BE AWARE OF OTHER HUNTERS. WHEN GUN HUNTING, ALWAYS ATTACH A BLAZE ORANGE SAFETY CAP.

## POLE INSTALLATION:

NOT APPLICABLE FOR ALL MODELS

1. Insert each end of poles into opposite corner pockets. Poles will cross at peak of roof. **SEE FIGURE 3.**
2. Tie a knot around poles at the peak of the roof to secure poles in place. **SEE FIGURE 4.**



## TAKE-DOWN INSTRUCTIONS:

1. Remove all ground stakes and zip up the doors and windows.
2. Collapse blind down so it is flat, lean the top of the blind against yourself and grasp the top with your hands at 10 and 2 o'clock. **SEE FIGURE 5.**
3. Roll the top away from your body, folding the blind in half, so the top edge is nearly touching the bottom edge. **SEE FIGURES 6.**

**NOTE: It may be easier to finish take-town while in a kneeling position.**

4. Shift your right hand to 12 o'clock and your left hand to 9 o'clock. Your left hand must remain above the bend. **SEE FIGURE 7.**
5. While holding onto the blind with both hands, pull your right hand, along the ground, towards your left leg (moving from 12 to 7 o'clock). At the same time, push your left hand over the top of your right hand (moving from 9 to 2 o'clock). **SEE FIGURE 8.**

**NOTE: The right side of the blind may SPRING UP! Move slowly to minimize the spring. The blind should collapse with ease. DO NOT force the blind!**

6. While pinning the blind down with your left hand, remove your right hand. Use your right hand to fold down the right side of the blind. **SEE FIGURE 9.**
7. Pack the blind into its carrying bag. **SEE FIGURE 10.**

## MAINTENANCE INSTRUCTIONS:

1. Never put blind away wet. Always put away dry to avoid mildew.
2. Take down blind when not in use to avoid unnecessary damage and fading.
3. Seal the seams with seam sealer and the walls and roof with silicon spray if leaking occurs.
4. Use extra tie-downs during excessive winds.

