



Illustrated Parts Breakdown
Illustration des pièces détachées

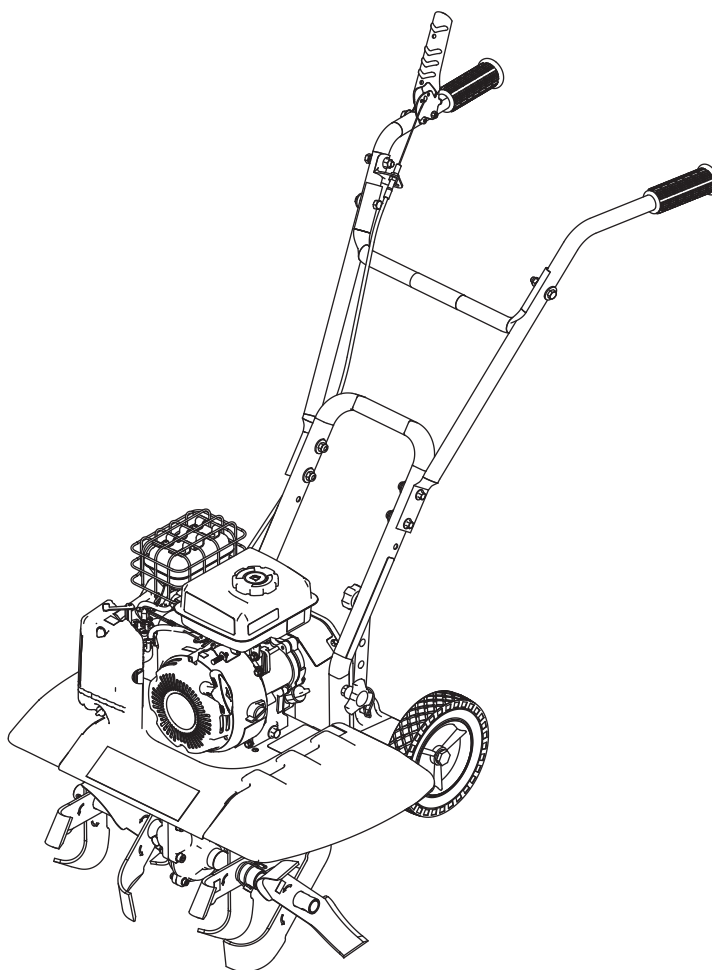
79cc Compact Tiller Cultivator

Model Number, Numéro de modèle :
35310

ENGLISH

FRANÇAIS

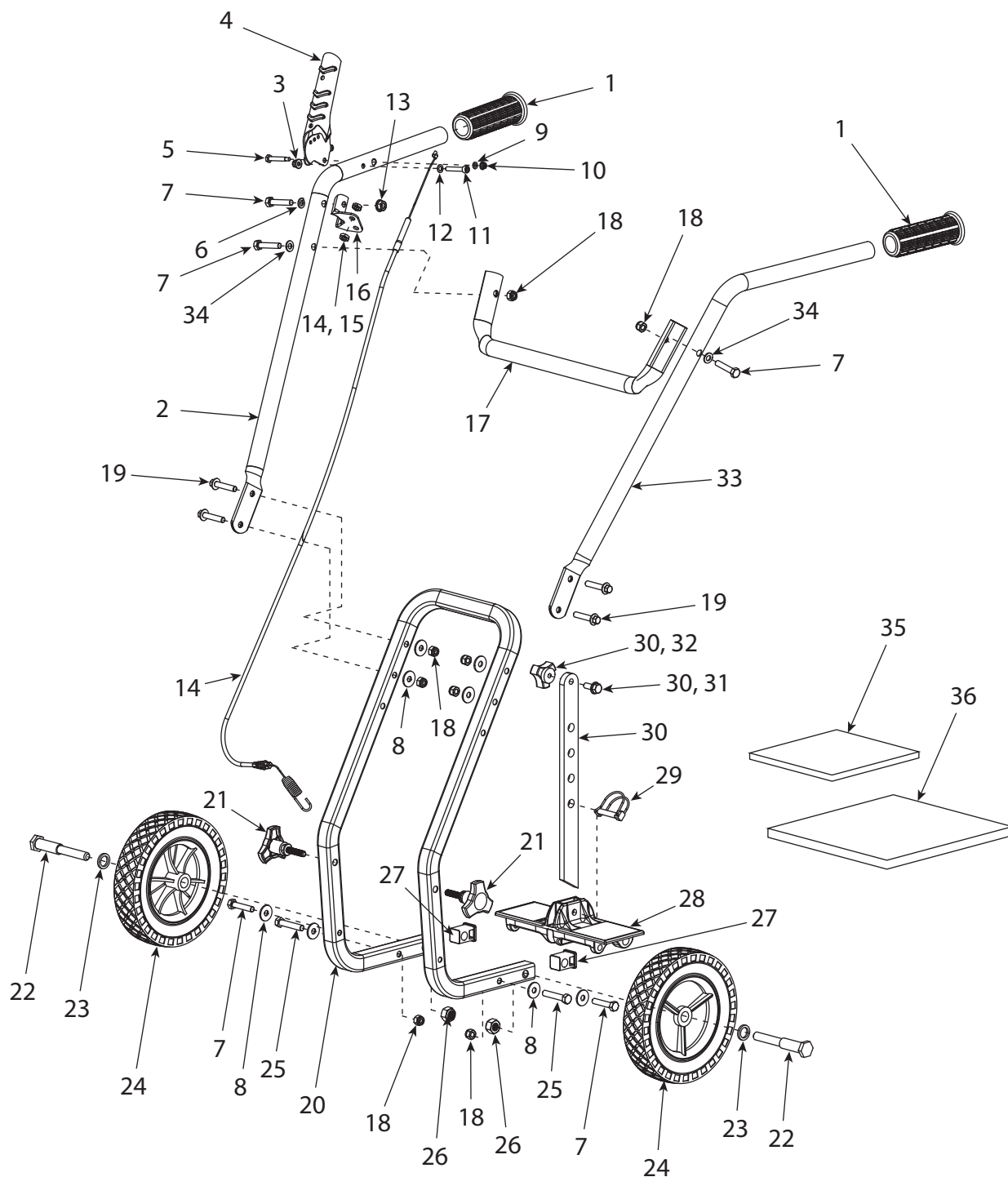
S/N



Get parts or technical assistance online at
www.tazzoutdoorproducts.com or call (800) 345-6007
Pièces détachées et assistance technique en ligne à
www.tazzoutdoorproducts.com ou composer le (800) 345-6007

© 2020 Ardisam
All Rights Reserved
Tous droits réservés
P/N: 35713
ECN: 12701
REV 1: 12/2/2019

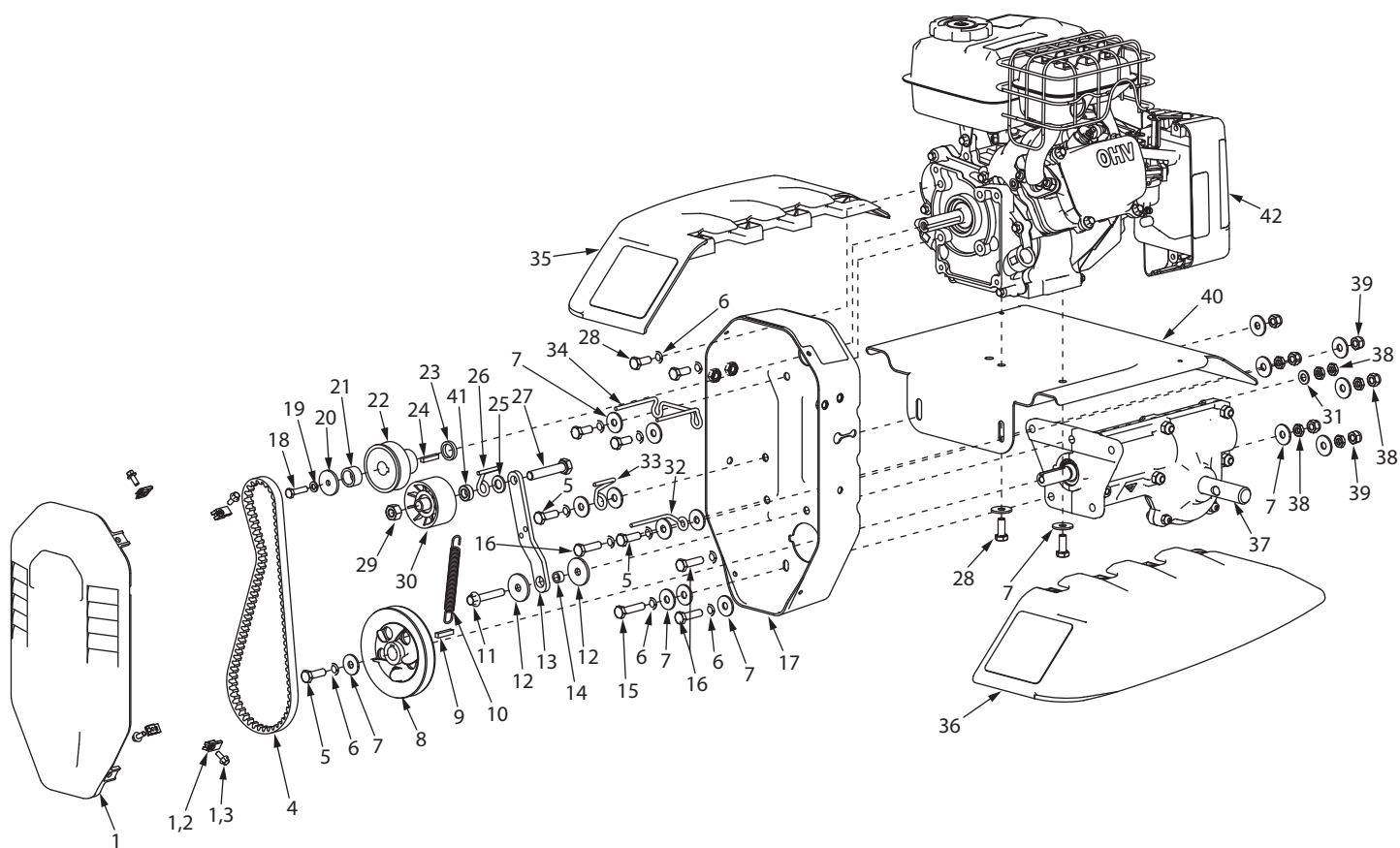
ILLUSTRATED PARTS BREAKDOWN / ILLUSTRATION DES PIÈCES DÉTACHÉES - Handlebar Assembly



ILLUSTRATED PARTS BREAKDOWN / ILLUSTRATION DES PIÈCES DÉTACHÉES - Handlebar Assembly

REF. / REP.	PART NO. / N° RÉF.	DESCRIPTION	QTY. / QTÉ
1	13833	GRIP 1 IN KNOB TEXTURED	2
2	25691	HANDLEBAR RIGHT	1
3	13599	NUT M6 X 1.0 NYIOCK FLANGE	1
4	14902	LEVER CLUTCH FORWARD	1
5	13159	BOLT M5 X 0.8 X 7 SHOULDER	1
6	21640	WASHER M8 SPRING LOCK	1
7	12770	BOLT M8 X 1.25 X 40 HEX HEAD	5
8	3245	WASHER M8 X 24 X 2 FLAT	8
9	3308	WASHER M5 X 10 X 1.0 FLAT	1
10	3248	NUT M5 X 0.8 NYLOCK FLANGE	1
11	20347	BOLT M6 X 13 X 1.75 FLAT	1
12	W1200117	WASHER M6 X 13 X 1.75 FLAT	1
13	13508	FLANGE NUT M8 X 1.25	1
14	20054	CABLE DRIVE CONTROL	1
15	4620	JAM NUT M8 X 1.25	2
16	23563	BRACKET CABLE MOUNT	1
17	25680	HANDLEBAR MIDDLE	1
18	400023	NUT M8 X 1.25 NYLOCK	10
19	19922	BOLT M8 X 1.25 X 40 HEX FLANGE	4
20	25694	FRAME HANDLEBAR MOUNT	1
21	20057	BOLT M8 THREE STAR KNOB	2
22	25985	BOLT M12 X 1.75 X 104 SHOULDER	2
23	10517	WASHER 16 X 25 X 2.5 MM FLAT	2
24	15856	WHEEL 8 X 5/8 IN GREY	2
25	18098	BOLT M8 X 1.25 X 45 HEX HEAD	2
26	17987	NUT M12 X 1.75 NYLOCK	2
27	20056	PLUG SQUARE TUBE END NYLON	2
28	35319	DRAG STAKE MOUNT CASTING	1
29	18039	LOCK PIN 8 X 40 MM	1
30	18131	DRAG STAKE ASSEMBLY	1
31	W1265V0904	BOLT M8 X 1.25 X 20 HEX HEAD	1
32	13601	NUT M8 X 1.25 THREE STAR KNOB	1
33	25692	HANDLEBAR LEFT	1
34	400024	WASHER M8 X 16 X 1.6 MM	2
35	29819	HARDWARE PARTS BAG	1
36	35317	MANUAL PARTS BAG	1

ILLUSTRATED PARTS BREAKDOWN / ILLUSTRATION DES PIÈCES DÉTACHÉES - Chassis Assembly



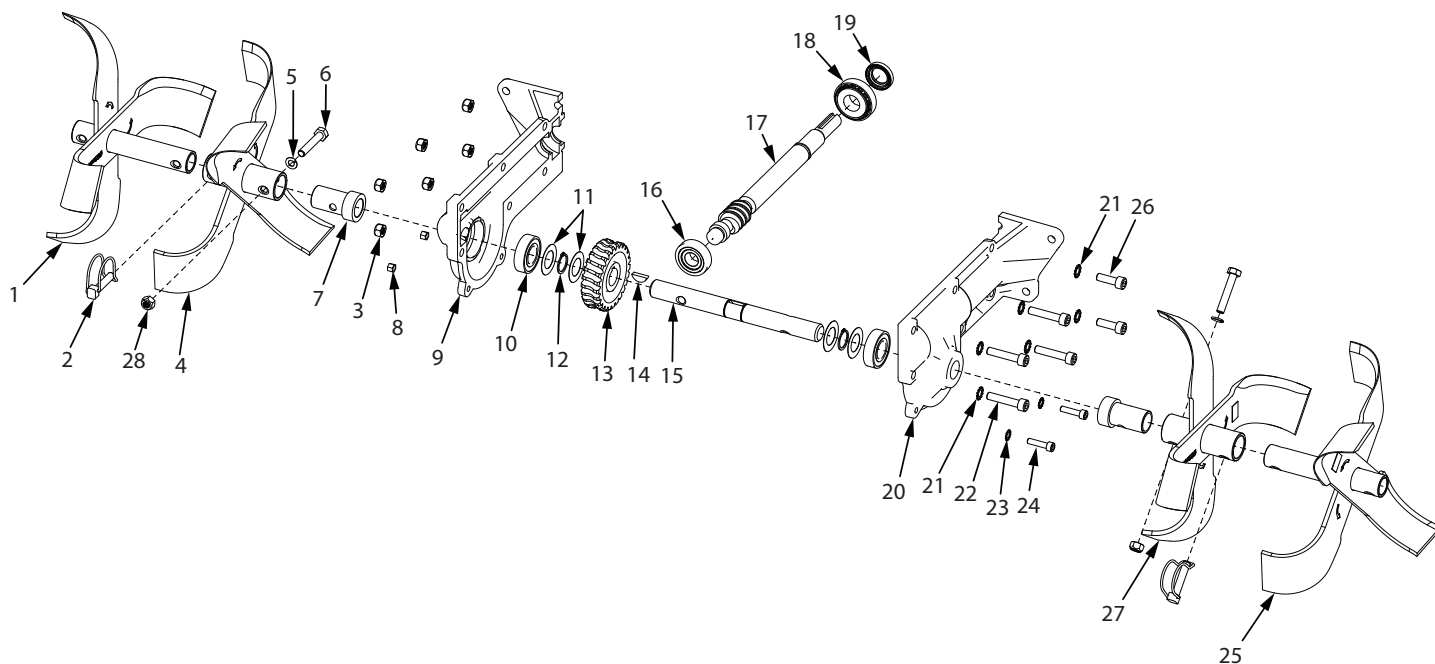
ILLUSTRATED PARTS BREAKDOWN / ILLUSTRATION DES PIÈCES DÉTACHÉES - Chassis Assembly

REF. / REP.	PART NO. / N° RÉF.	DESCRIPTION	QTY. / QTÉ
1	23552	PULLEY BOX COVER & HARDWARE	1
2	23873	CAGE NUT M5 X 0.8	4
3	400018	BOLT M5 X 0.8 X 12 HEX FLANGE	4
4	20343	BELT 12 X 728 TYPE 4L TOOTH	1
5	13826	BOLT M8 X 1.25 X 25 HEX HEAD	3
6	21640	WASHER M8 SPRING LOCK	11
7	3245	WASHER M8 X 24 X 2 FLAT	18
8	20067	PULLEY TRANSMISSION FLUTED	1
9	21819	KEY 5 X 25 MM SQUARE	1
10	23506	EXTENSION SPRING 120.4 X 1.65	1
11	3247	BOLT M8 X 1.25 X 45 HEX FLANGE	1
12	23982	WASHER 8.5 X 32.5 X 3 MM FLAT	2
13	20060	FORWARD IDLER ARM STEEL	1
14	23981	BUSHING 8 X 12.5 X 7 MM STEEL	1
15	20816	BOLT M8 X 1.25 X 35 HEX HEAD	1
16	17983	BOLT M8 X 1.25 X 30 HEX HEAD	3
17	25814	PULLEY BOX STEEL	1
18	23511	BOLT M6 X 1.0 X 25 HEX HEAD	1
19	W1200116	WASHER M6 SPRING LOCK	1
20	20344	WASHER M6 X 29.5 X 3 FLAT	1
21	20244	BUSHING 16 X 12 X 22 MM STEEL	1
22	18022	PULLEY ENGINE SINGLE GROOVE	1

REF. / REP.	PART NO. / N° RÉF.	DESCRIPTION	QTY. / QTÉ
23	20246	BUSHING 16 X 4 X 22 MM STEEL	1
24	23512	KEY 4.8 X 25 MM SQUARE	1
25	2431	WASHER M10 X 20 X 2 FLAT	1
26	22563	WIRE BELT CATCH SINGLE LOOP	1
27	21600	BOLT M10 X 1.5 X 55 HEX HEAD	1
28	W1265V0904	BOLT M8 X 1.25 X 20 HEX HEAD	6
29	3235	NUT M10 X 1.5 TOPLOCK	1
30	32995	IDLER PULLEY NYLON	1
31	400024	WASHER M8 X 16 X 1.6 MM	1
32	20345	WIRE BELT GUIDE RIGHT	1
33	25038	WIRE BELT GUIDE LEFT	1
34	20059	WIRE BELT GUIDE DOUBLE LOOP	1
35	26339	TUFFLEX TINE SHIELD LEFT	1
36	26340	TUFFLEX TINE SHIELD RIGHT	1
37	29809	TRANSMISSION 12.5:1 WEBBED	1
38	4620	JAM NUT M8 X 1.25	6
39	400023	NUT M8 X 1.25 NYLOCK	6
40	35318	CENTER TINE SHIELD STEEL	1
41	36349	SPACER 10 X 18 X 6 MM	1
42	31067	ENGINE 79CC VIPER	1

* See engine manual for engine parts explosion or directions for accessing service parts.

ILLUSTRATED PARTS BREAKDOWN / ILLUSTRATION DES PIÈCES DÉTACHÉES - Transmission Assembly



ILLUSTRATED PARTS BREAKDOWN / ILLUSTRATION DES PIÈCES DÉTACHÉES - Transmission Assembly

REF. / REP.	PART NO. / N° RÉF.	DESCRIPTION	QTY. / QTÉ
1	13905	TINE SET OUTER RIGHT	1
2	18039	LOCK PIN 8 X 40 MM	2
3	400023	NUT M8 X 1.25 NYLOCK	6
4	29812	TINE SET INNER RIGHT M10 HOLE	1
5	W1200119	WASHER M10 SPRING LOCK	2
6	20016	BOLT M10 X 1.5 X 45 HEX HEAD	2
7	29810	SLEEVE TINE SHAFT STEEL M10 HOLE	2
8	4650	NUT M6 X 1.0 NYLOCK	2
9*	---	TRANSMISSION CASTING RIGHT	1
10	3309	BEARING 6004 2RS	2
11	21814	SPACER BEARING	4
12	21816	RETAINING RING 3AM1-20	2
13	20065	GEAR 25 TOOTH BRONZE	1
14	21817	KEY 5 X 7.5 X 19 MM WOODRUFF	1
15	29808	TINE SHAFT 209 MM M10	1
16	331021	BEARING TAPERED 30203	1
17	24900	DRIVE SHAFT WORM GROOVED	1
18	3220	BEARING 30204	1
19	331042	SEAL 20 X 32 X 6 MM	1
20*	---	TRANSMISSION CASTING LEFT	1
21	21810	WASHER M8 EXTERNAL TOOTH	6
22	21808	BOLT M8 X 1.25 X 40 SOCKET HEAD	4
23	21818	WASHER M6 EXTERNAL TOOTH	2
24	14375	BOLT M6 X 1.0 X 25 SOCKET HEAD	2
25	13904	TINE SET OUTER LEFT	1
26	400022	BOLT M8 X 1.25 X 25 SOCKET HEAD	2
27	29813	TINE SET INNER LEFT M10 HOLE	1
28	W1265V0903	NUT M10 X 1.5 NYLOCK	2

* Right and left casings sold as complete transmission 29809 assembly only.



ARDISAM, INC.
1160 Eighth Avenue
PO Box 666
Cumberland, WI 54829

Phone, Téléphone : (800) 345-6007
Fax, Télécopieur : (715) 822-2124
www.tazzoutdoorproducts.com