

Groundbreaking Power Equipment

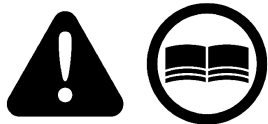
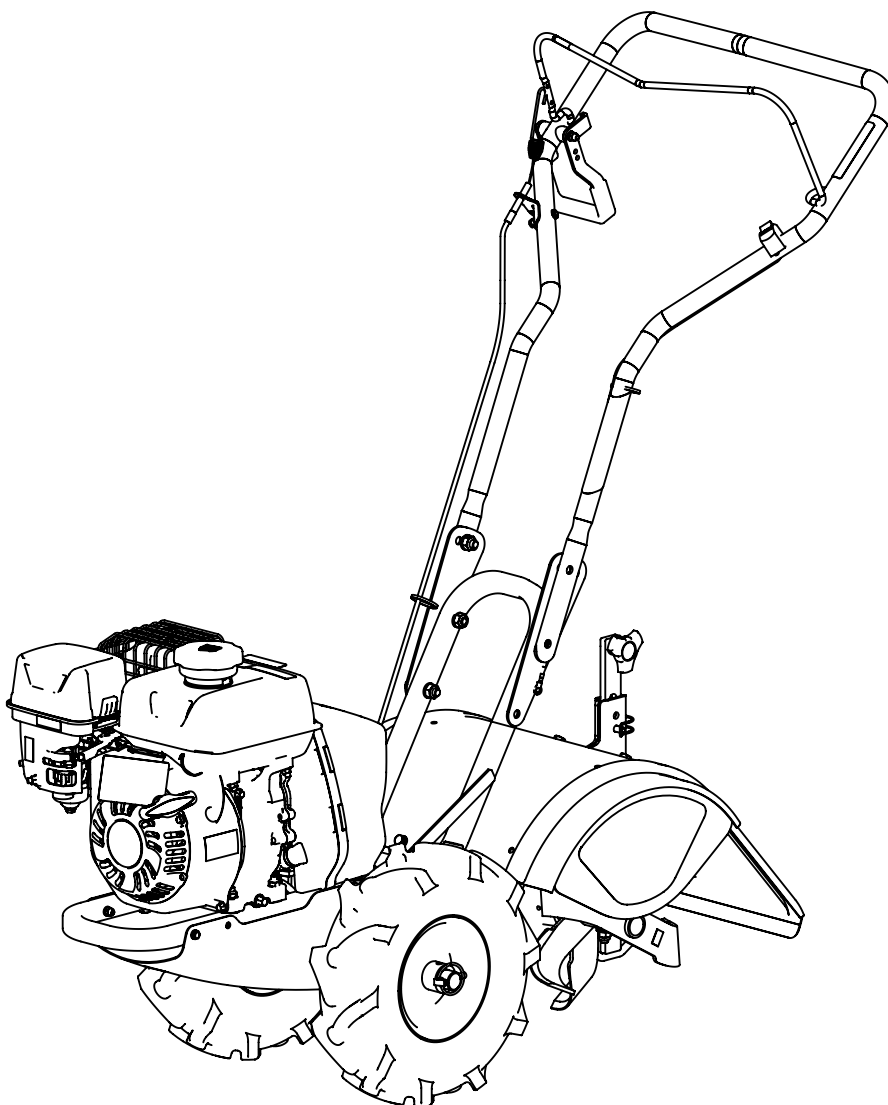
Illustrated Parts Breakdown
Illustration des pièces détachées

**Model Number,
Numéros de modèle :**
39381

ENGLISH

FRANÇAIS

S/N

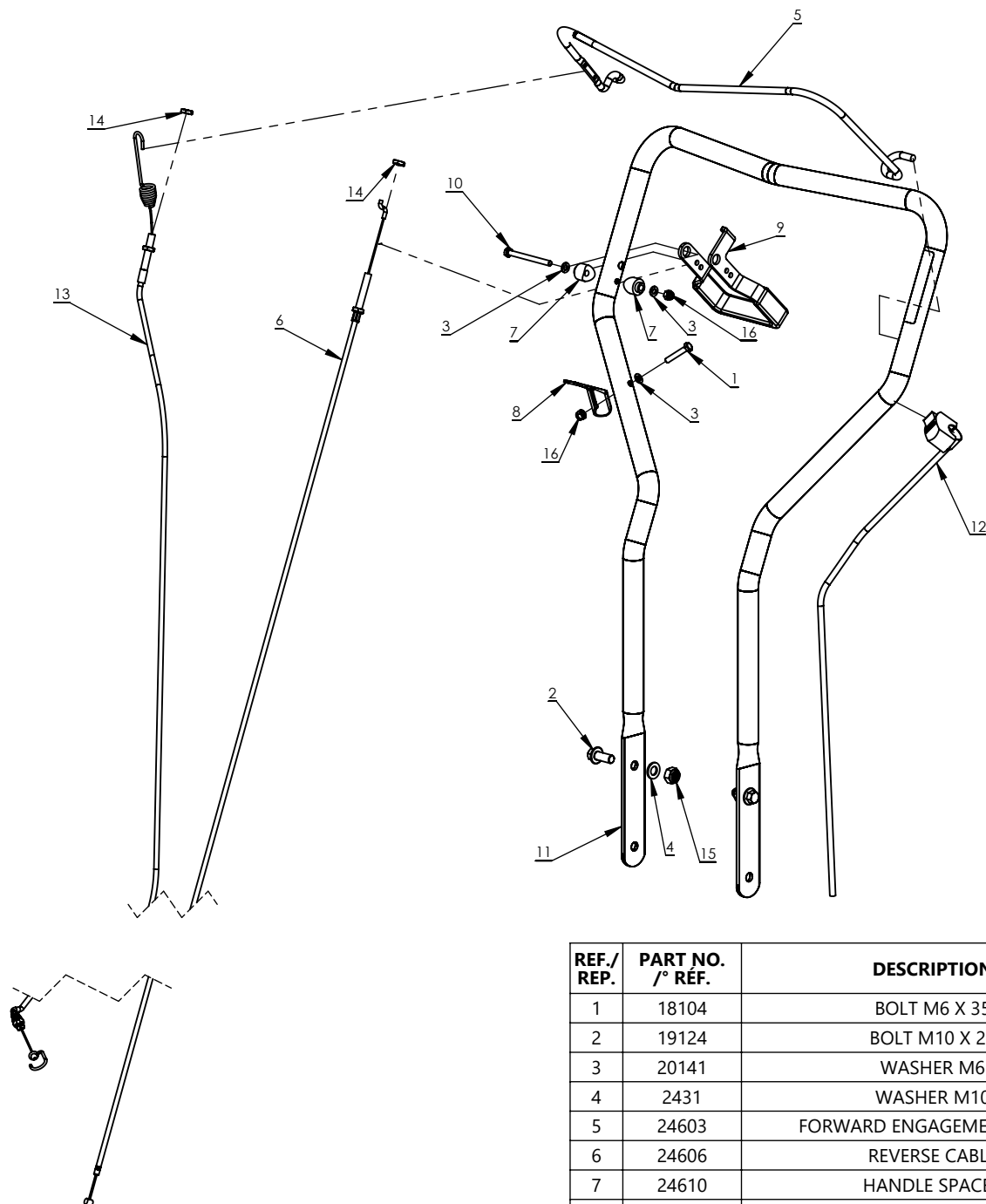


www.getearthquake.com - (800) 345-6007

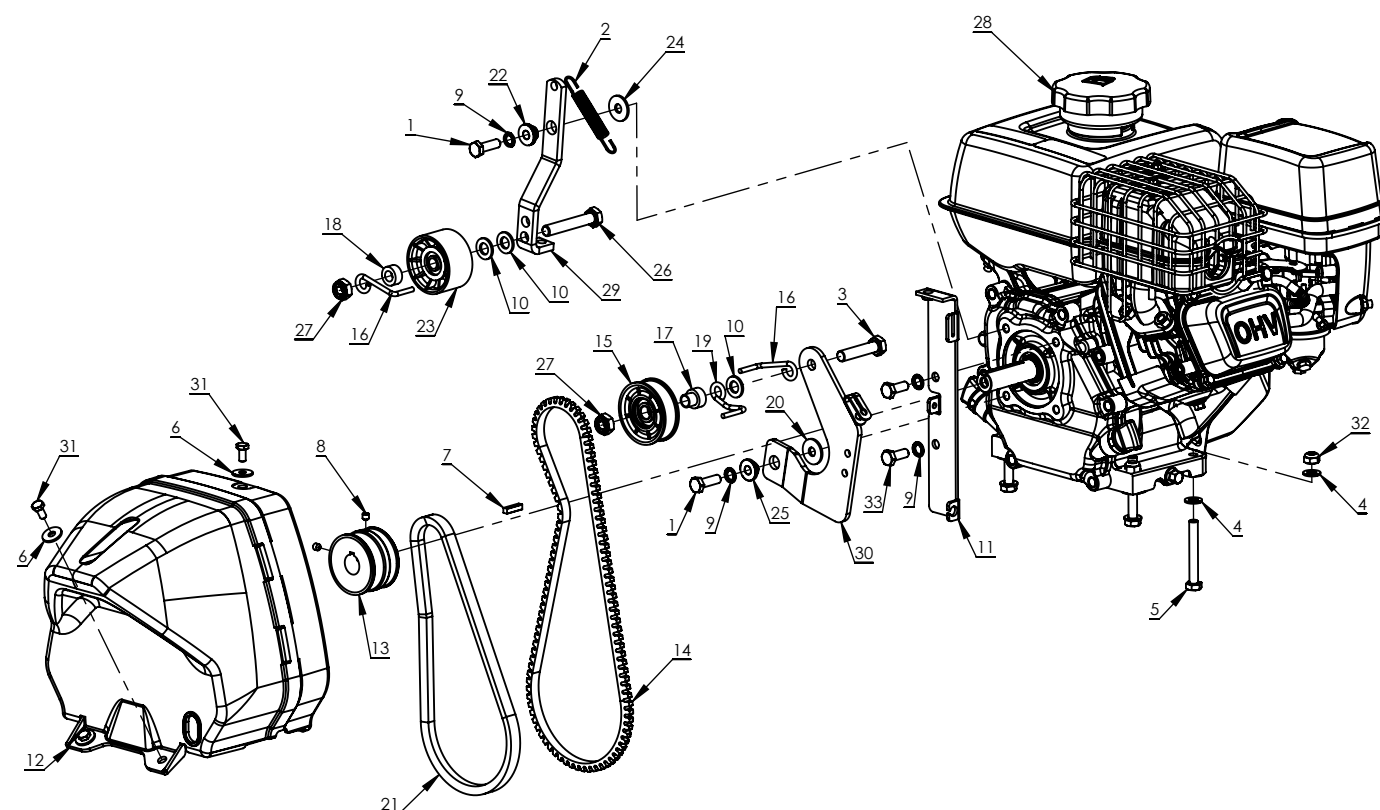
© 2021 Ardisam, Inc.
All Rights Reserved
Tous droits réservés
P/N: 39999
SVC: 05515
ECN: 13405
REV 1: 2021-04-20



THIS INSTRUCTION BOOKLET CONTAINS IMPORTANT SAFETY INFORMATION. PLEASE READ AND KEEP FOR FUTURE REFERENCE.
CE LIVRET D'INSTRUCTIONS CONTIENT DES INFORMATIONS IMPORTANTES SUR LA SÉCURITÉ. VEUILLEZ LE LIRE ET LE CONSERVER POUR TOUTE CONSULTATION EXTÉRIEURE.

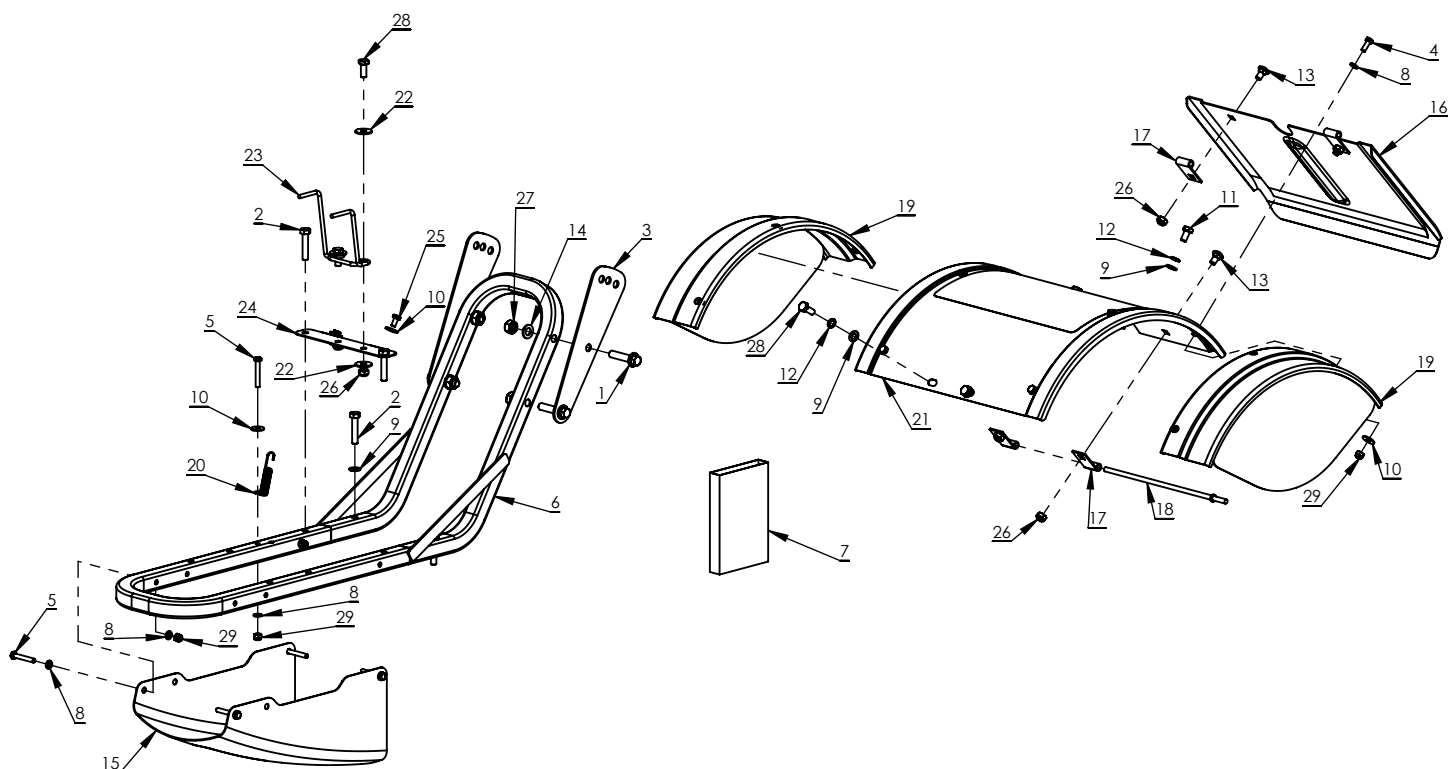


REF./ REP.	PART NO. /° RÉF.	DESCRIPTION	QTY. /QTÉ
1	18104	BOLT M6 X 35	1
2	19124	BOLT M10 X 25	2
3	20141	WASHER M6	3
4	2431	WASHER M10	2
5	24603	FORWARD ENGAGEMENT LEVER	1
6	24606	REVERSE CABLE	1
7	24610	HANDLE SPACER	2
8	25490	CABLE MOUNT BRACKET	1
9	25744	REVERSE ENGAGEMENT LEVER	1
10	25755	BOLT M6 X 70	1
11	26966	HANDLEBAR WITH DECAL	1
12	32431	RUN STOP SWITCH	1
13	32910	FORWARD CABLE	1
14	4620	NUT M8	4
15	W1265V0903	NUT M10	2
16	W1265V0913	NUT M6	2



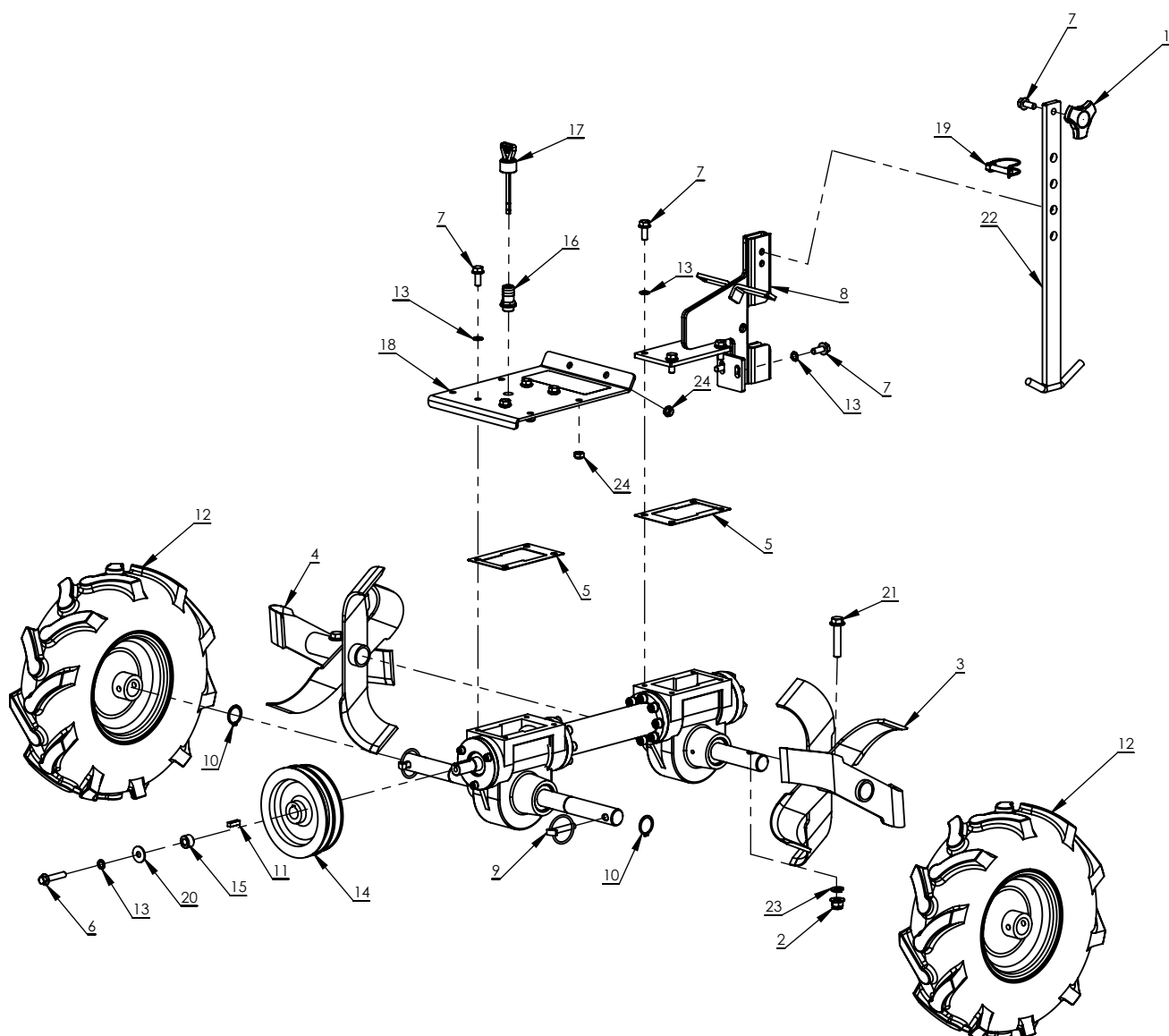
REF./ REP.	PART NO. /° RÉF.	DESCRIPTION	QTY. /QTÉ
1	13826	BOLT M8 X 25	2
2	1407	SPRING EXTENSION	1
3	20016	BOLT M10 X 45	1
4	20143	WASHER M8	8
5	20144	BOLT M8 X 60	4
6	20148	WASHER M6	3
7	20176	KEY 4.8 MM	1
8	20919	SET SCREW	2
9	21640	LOCK WASHER M8	4
10	2431	WASHER M10	3
11	24614	CABLE MOUNT PLATE	1
12	24771	BELT GUARD COVER	1
13	24950	DRIVE PULLEY	1
14	24995	BELT	1
15	25881	IDLER PULLEY	1
16	25885	BELT GUIDE FORWARD	2
17	25888	PULLEY SPACER REVERSE	1

REF./ REP.	PART NO. /° RÉF.	DESCRIPTION	QTY. /QTÉ
18	25889	PULLEY SPACER FORWARD	1
19	26564	BELT GUIDE REVERSE	1
20	3245	WASHER M8	1
21	32993	BELT	1
22	32994	ARM BUSHING	1
23	32995	IDLER PULLEY	1
24	32996	WASHER M8	1
25	33002	ARM BUSHING	1
26	35586	BOLT M10 X 60	1
27	35588	NUT M10	2
28	39570	ENGINE	1
29	53617	FORWARD ARM	1
30	53682	REVERSE ARM	1
31	W1200115	BOLT M6 X 12	3
32	W1265V0900	NUT M8	4
33	W1265V0904	BOLT M8 X 20	2



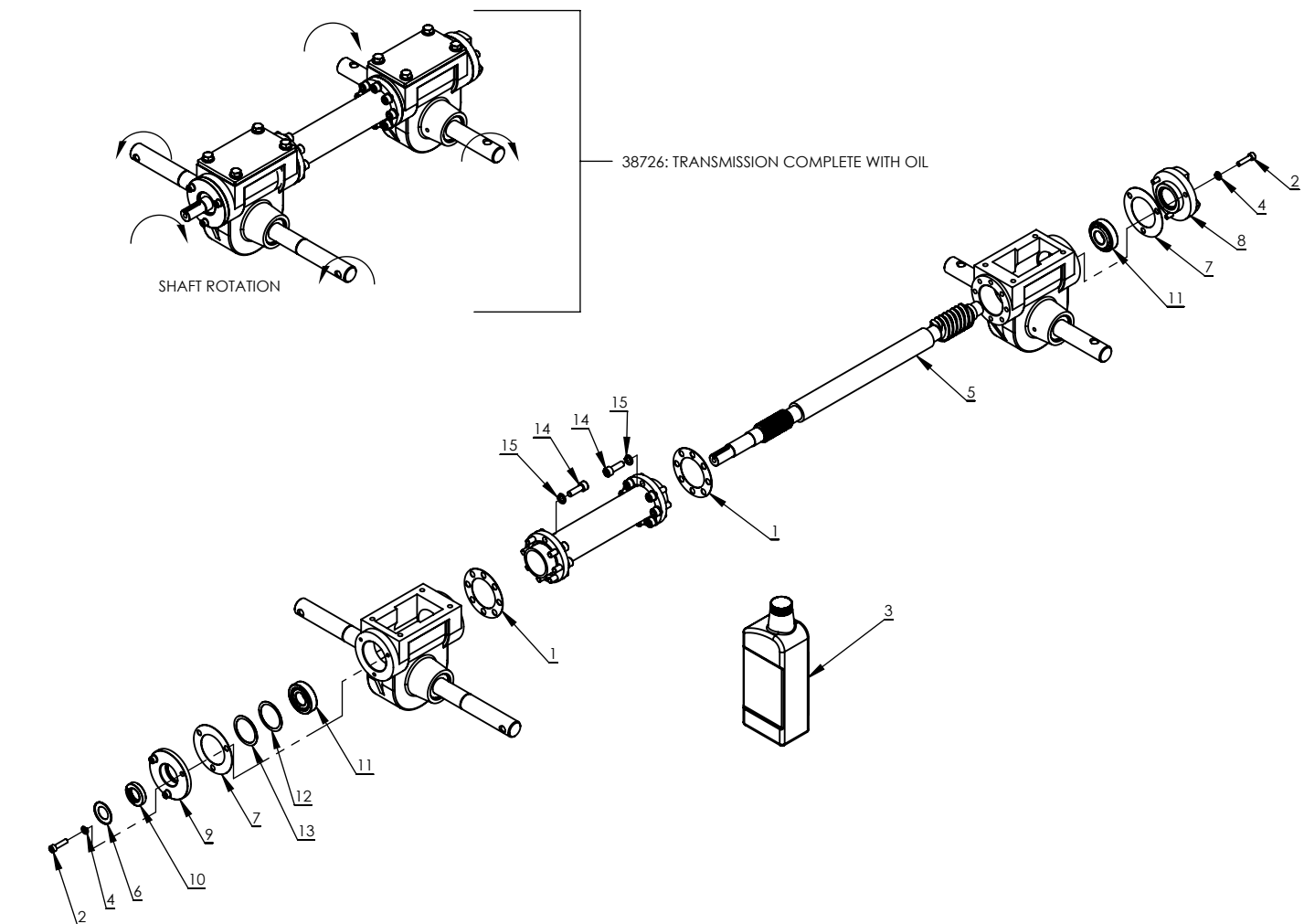
REF./ REP.	PART NO. /° RÉF.	DESCRIPTION	QTY. /QTÉ
1	11509	BOLT M10 X 45	4
2	12770	BOLT M8 X 40	4
3	13285	HANDLEBAR MOUNT	2
4	17986	BOLT M6 X 16	6
5	18103	BOLT M6 X 40	5
6	19867	TUBE FRAME	1
7	20140	HARDWARE PARTS BAG	1
8	20141	WASHER M6	15
9	20143	WASHER M8	6
10	20148	WASHER M6	9
11	20150	BOLT M8 X 15	2
12	21640	LOCK WASHER M8	4
13	21939	BOLT M8 X 15	4
14	2431	WASHER M10	4
15	24764	LOWER PAN	1

REF./ REP.	PART NO. /° RÉF.	DESCRIPTION	QTY. /QTÉ
16	24778	BEAVER TAIL	1
17	24868	HINGE BASE	4
18	24869	HINGE PIN	1
19	24873	TINE SIDE SHIELD	2
20	24885	EXTENSION SPRING	1
21	26964	REAR TINE HOOD WITH DECAL	1
22	3245	WASHER M8	4
23	32992	BELT GUIDE	1
24	33136	BELT GUIDE MOUNT	1
25	W1200115	BOLT M6 X 12	2
26	W1265V0900	NUT M8	6
27	W1265V0903	NUT M10	4
28	W1265V0904	BOLT M8 X 20	4
29	W1265V0913	NUT M6	11

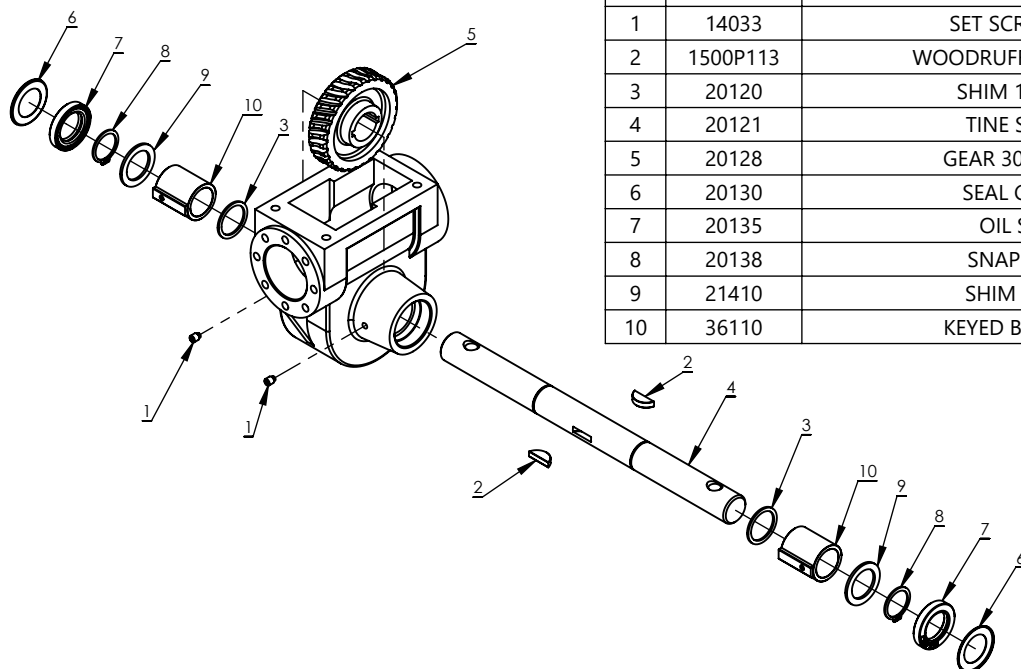


REF./ REP.	PART NO. /° RÉF.	DESCRIPTION	QTY. /QTÉ
1	13601	KNOB	1
2	16903	NUT M10	2
3	1900LCRT	TINE SET LEFT	1
4	1900RCRT	TINE SET RIGHT	1
5	19864	GASKET	2
6	19922	BOLT M8 X 40	1
7	19945	BOLT M8 X 20	11
8	20003	DRAG STAKE MOUNT	1
9	20109	LYNCH PIN	2
10	20138	SNAP RING	2
11	20197	KEY 6MM	1
12	20967	TIRE AND WHEEL ASSEMBLY	2

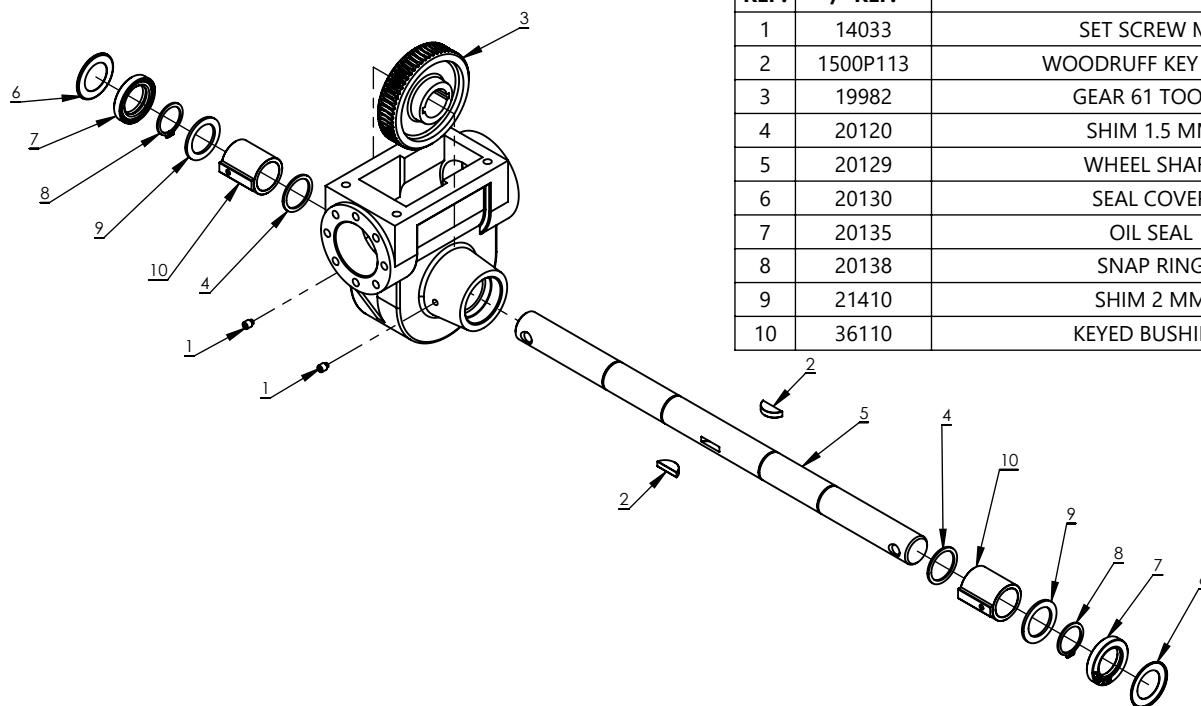
REF./ REP.	PART NO. /° RÉF.	DESCRIPTION	QTY. /QTÉ
13	21640	LOCK WASHER M8	11
14	24616	PULLEY	1
15	24617	SPACER	1
16	24877	VENT	1
17	24879	DIPSTICK	1
18	26965	TRANSMISSION PLATE WITH DECAL	1
19	31563	SAFETY SNAP PIN	1
20	3245	WASHER M8	1
21	35699	BOLT M10 X 50	2
22	53655	DRAG STAKE	1
23	W1200119	LOCK WASHER M10	2
24	W1265V0900	NUT M8	6



REF./ REP.	PART NO. /° RÉF.	DESCRIPTION	QTY. /QTÉ
1	14028	GASKET	2
2	14375	BOLT M6 X 25	6
3	1690	OIL 1 QT	1
4	18130	LOCK WASHER M6	6
5	19993	TRANSMISSION SHAFT	1
6	20131	SEAL COVER	1
7	20132	GASKET	2
8	20133	REAR BEARING CAP	1
9	20134	FRONT BEARING CAP	1
10	20136	OIL SEAL	1
11	20137	BEARING	2
12	20804	SHIM 0.3 MM	1
13	21419	SHIM 0.5 MM	1
14	400022	BOLT M8 X 25	16
15	W1200114	LOCK WASHER M8	16



REF./ REP.	PART NO. /° RÉF.	DESCRIPTION	QTY. /QTÉ
1	14033	SET SCREW M6	2
2	1500P113	WOODRUFF KEY 5 MM	2
3	20120	SHIM 1.5 MM	2
4	20121	TINE SHAFT	1
5	20128	GEAR 30 TOOTH	1
6	20130	SEAL COVER	2
7	20135	OIL SEAL	2
8	20138	SNAP RING	2
9	21410	SHIM 2 MM	2
10	36110	KEYED BUSHING	2



REF./ REP.	PART NO. /° RÉF.	DESCRIPTION	QTY. /QTÉ
1	14033	SET SCREW M6	2
2	1500P113	WOODRUFF KEY 5 MM	2
3	19982	GEAR 61 TOOTH	1
4	20120	SHIM 1.5 MM	2
5	20129	WHEEL SHAFT	1
6	20130	SEAL COVER	2
7	20135	OIL SEAL	2
8	20138	SNAP RING	2
9	21410	SHIM 2 MM	2
10	36110	KEYED BUSHING	2



GROUNDBREAKING POWER EQUIPMENT

1160 Eighth Avenue
PO Box 666
Cumberland, WI 54829

Phone, Téléphone: (800) 345-6007
Fax, Télécopieur: (715) 822-2124
www.getearthquake.com