

# Eskimo®

**HIGH PERFORMANCE ICE FISHING GEAR**

## **ASSEMBLY INSTRUCTIONS & PARTS**

***Quickflip 2 & Quickflip 3 Ice Shelters***



**QUICKFLIP 2**  
**69167**



**QUICKFLIP 3**  
**69168**



**GetEskimo.com**



OMQUICKFLIP  
Rev. 6/3/08

© 2008 Ardisam, Inc.  
All Rights Reserved.



**Quickflip™ 2 (69167) & Quickflip™ 3 (69168)**

Eskimo Ice Shelters are engineered with you the high performance fisherman in mind. We appreciate your purchase of one of our high performance ice shelters. Follow these simple instructions and your ice shelter will provide you many years of trouble-free pleasure. Save these instructions for future reference.

If for any reason you have a problem with your product, **DO NOT return to the retailer**, contact the Eskimo customer service department at **1-800-345-6007 or by email at [info@ardisam.com](mailto:info@ardisam.com)** for assistance.

**CONTENTS**

Introduction & Registration .....3  
Important Safety Precautions .....4  
Assembly, Set-up & Take-down Instructions..... 5-12  
Long Term Storage.....12  
Parts ..... 13-17  
FAQ's (Frequently Asked Questions) .....18  
Warranty .....19  
Optional Accessories.....20

**REGISTRATION**

Record the model number and serial number (if applicable) in the space provided for easy reference. Fill out and mail the registration card located in the parts packet. Warranty is valid only if the completed registration card is received by Ardisam, Inc. within 30 days of purchase.

OWNERSHIP RECORDS		
Place of Purchase:		
Place of Purchase Address:		
City:	State/Province:	Zip Code/Postal Code:
Model Number:		Serial Number:
Date of Purchase:		
Notes:		

**Quickflip™ 2 (69167) & Quickflip™ 3 (69168)**

**IMPORTANT SAFETY PRECAUTIONS**

This tent is made with flame resistant fabric which meets CPAI-84 specifications. It is not fire proof. The fabric will burn if left in continuous contact with any flame source.

The application of any foreign substance to the tent fabric may render the flame resistant properties ineffective.

Heat sources burn oxygen and emit carbon monoxide. Use caution with heaters and vent properly.



**This symbol points out important safety instructions which if not followed could endanger your personal safety. Read and follow all instructions in this manual.**

- Do not use candles, matches or open flames of any kind in or near this shelter.
- Do not cook inside this shelter.
- Exercise extreme caution when using fuel-powered lanterns or heaters inside this shelter.
- Do not refuel lamps, heaters or stoves inside this shelter.
- Extinguish or turn off all lanterns before leaving this shelter.
- Do not smoke in this shelter.
- Do not store flammable liquids inside this shelter.

**⚠ WARNING**

**READ, UNDERSTAND AND FOLLOW ALL ASSEMBLY, SAFETY, SET-UP & USE INSTRUCTIONS PROVIDED BEFORE EACH USE. FAILURE TO FOLLOW ALL WARNINGS AND INSTRUCTIONS COULD RESULT IN SERIOUS INJURY OR DEATH.**

**KEEP ALL FLAME AND HEAT SOURCES AWAY FROM THIS TENT FABRIC.**

**DUE TO TRAFFIC ON LAKES, ICE FISHING CAN BE HAZARDOUS AT NIGHT. IF YOU CHOOSE TO FISH AT NIGHT OR IN CONDITIONS WITH POOR VISIBILITY, BE SURE TO TAKE PRECAUTIONS.**

**NEVER LEAVE THE ICE SHELTER UNATTENDED.**

**SECURELY ANCHOR THE ICE SHELTER TO THE ICE IN HIGH WIND CONDITIONS.**

**LUBRICATE THE SLIDE POLES WITH WD-40® OR A SILICON SPRAY AT LEAST SEASONALLY. DO NOT USE OIL OR GREASE AS A LUBRICANT.**

**Quickflip™ 2 (69167) & Quickflip™ 3 (69168)**

**ASSEMBLY INSTRUCTIONS**

Tools needed - two 7/16" wrenches and a Phillips screwdriver.

**ASSEMBLY NOTE:** *This ice shelter should be assembled in a garage or basement setting due to the time and length of assembly. Identify and familiarize yourself with all parts and hardware before assembly. Allow 1-3 hours for assembly.*

**ASSEMBLY NOTE:** *The use of a cordless drill with socket will make assembly of your ice shelter much quicker. Be sure to set the drill speed low so you do not over tighten any nut and bolt combinations.*

**ASSEMBLY NOTE:** *If a Tracking Kit is purchased with the shelter, it should be mounted to the sled before assembly of the ice shelter for convenience.*

**IMPORTANT ASSEMBLY TIP:** **DO NOT FULLY TIGHTEN ANY NUT AND BOLT COMBINATIONS UNTIL ALL BOLT-ON PARTS ARE ASSEMBLED TOGETHER! FINGER TIGHTEN ONLY! THIS WILL HELP HOLE ALIGNMENT OF ALL PARTS.**

**FOR QUICKFLIP 2**

1. Attach sled support bar (69677) and the left hinge assembly (69309L) to the upper lip of sled using (4) provided 1/4-20 x 7/8" bolts, nyloc nuts and washers. **SEE FIGURE 1A.**

**NOTE:** *Be sure hinge assembly is orientated as shown in FIGURE 1A, with high sides of hinges placed to the front of sled and hinge poles to the inside.*

2. Attach sled support bar and the right hinge assembly (69309R) to the upper lip of sled using (4) provided 1/4-20 x 7/8" bolts, nyloc nuts and washers.

**NOTE:** *Be sure hinge assembly is orientated with high sides of hinges placed to the front of sled and hinge poles to the inside.*

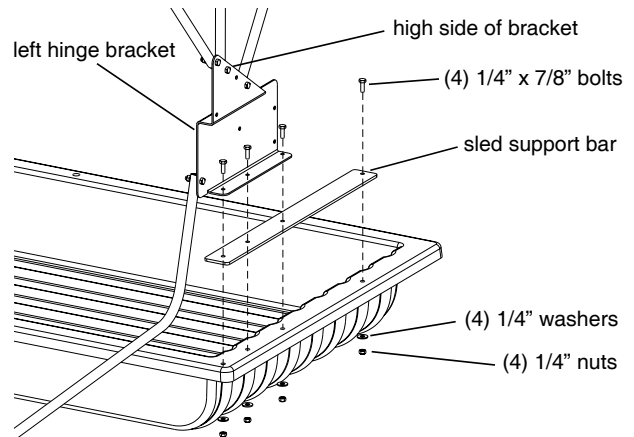
**FOR QUICKFLIP 3**

1. Attach the left hinge assembly (68426) to the upper lip of sled using (3) provided 1/4-20 x 7/8" bolts, nyloc nuts and SAE washers. **SEE FIGURE 1B.**

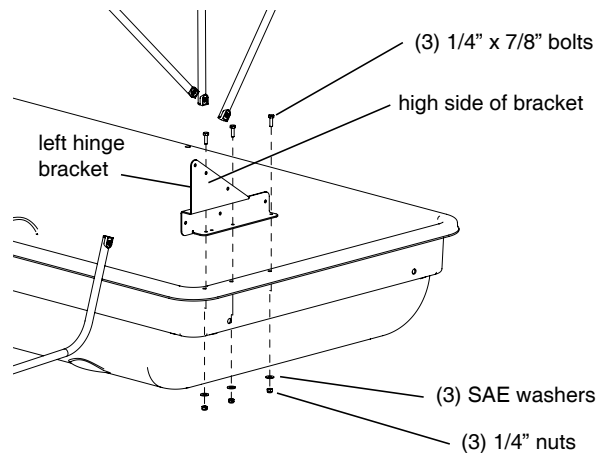
**NOTE:** *Be sure hinge assembly is orientated as shown in FIGURE 1B, with high sides of hinges placed to the front of sled and hinge poles to the inside.*

2. Attach the right hinge assembly (68425) to the upper lip of sled using (3) provided 1/4-20 x 7/8" bolts, nyloc nuts and SAE washers.

**NOTE:** *Be sure hinge assembly is orientated with high sides of hinges placed to the front of sled and hinge poles to the inside.*



**FIGURE 1A (left side shown)**



**FIGURE 1B (left side shown)**

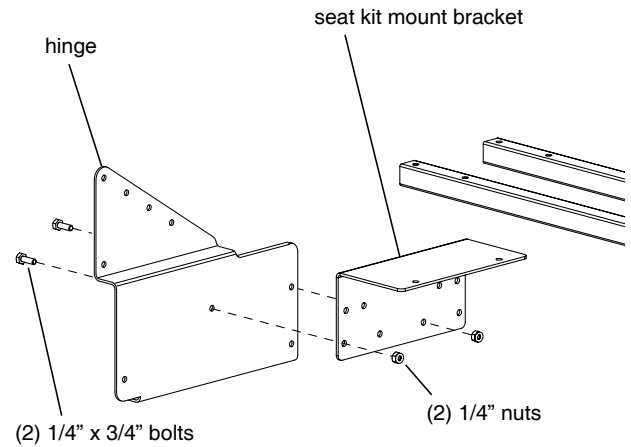
Quickflip™ 2 (69167) & Quickflip™ 3 (69168)

**FOR QUICKFLIP 2**

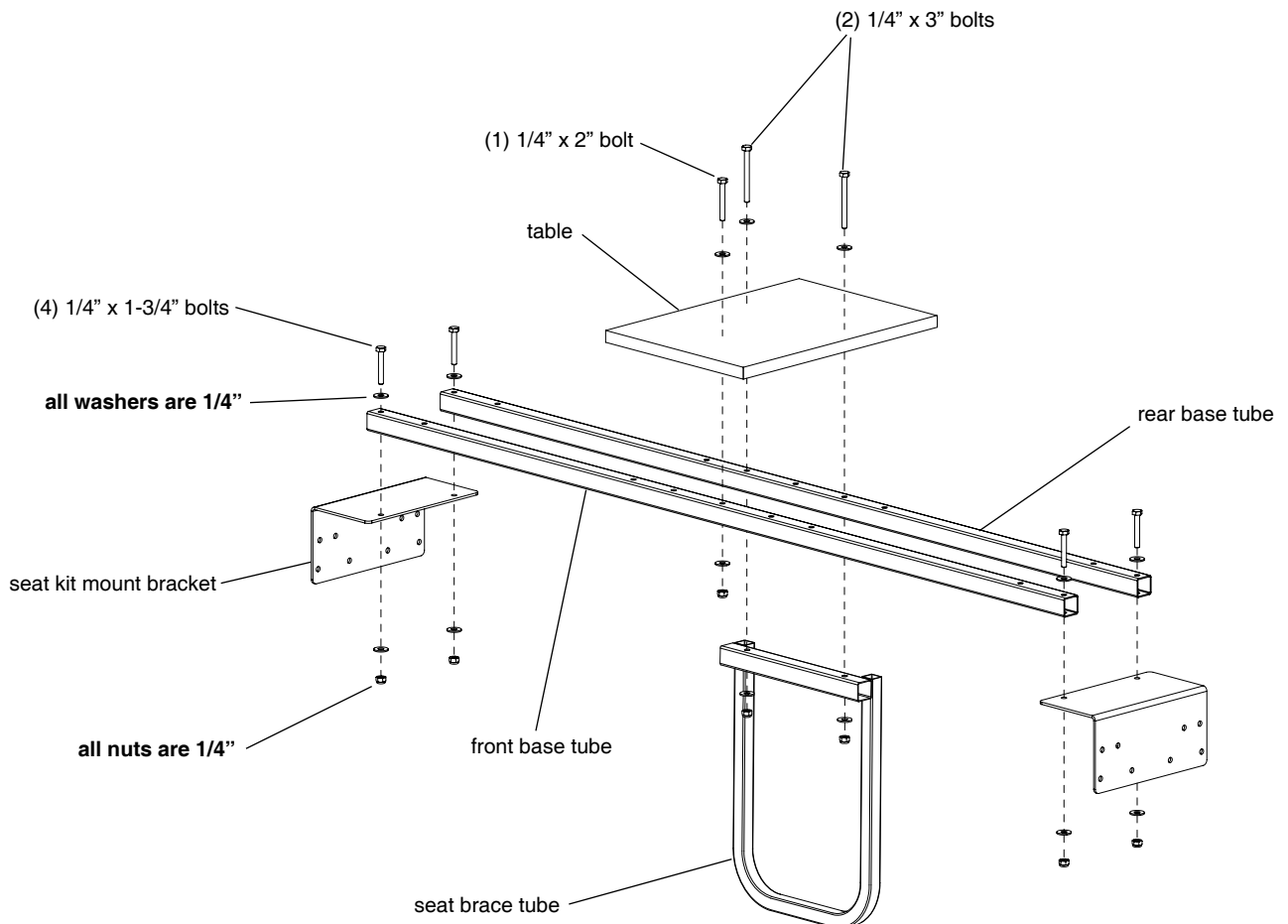
1. Attach (2) seat kit mount brackets (68430) to each hinge assembly using (4) provided 1/4-20 x 3/4" hex head bolts and nyloc nuts. Make sure the mount brackets are positioned in the correct hole locations so seat brace and seat positions are correct later in instructions. **SEE FIGURE 2.**
2. Attach (2) base tubes (68431) to the top side of seat kit mount brackets using (4) provided 1/4-20 x 1-3/4" bolts, nyloc nuts and (8) washers. **SEE FIGURE 3A.**
3. a. Attach table (68439) to top of rear base tube and seat brace (68172) to bottom of rear base tube using (2) provided 1/4-20 x 3" bolts, nyloc nuts and (4) washers. **SEE FIGURE 3A.**

**NOTE: Seat brace should be oriented so cross tube is to the front of ice shelter. SEE FIGURE 3A.**

3. b. Attach front of table to front base tube using (1) provided 1/4-20 x 2" bolts, nyloc nut and (2) washers. **SEE FIGURE 3A.**



**FIGURE 2 (right side shown)**



**FIGURE 3A**

Quickflip™ 2 (69167) & Quickflip™ 3 (69168)

4. Attach (2) seat bases (68435) to top of base tubes using (8) provided 1/4-20 x 2-3/4" bolts, nyloc nuts and (16) washers. **SEE FIGURE 3B.**
5. Attach backrest frame (68433) to each seat base using (4) provided 1/4-20 x 1-1/2" bolts and nyloc nuts. **SEE FIGURE 3B. You may now tighten all nut & bolt assemblies. Be sure not to over tighten or crush tubing when tightening!**
6. Attach (2) removable seat cushions (68162) to the top of seat bases and snap the side release buckles together. Pull straps tight so seat is not loose.
7. Attach (2) removable backrest cushions (68163) to the backrest frames and secure with Velcro.

**WARNING**

BE SURE SEAT PAD & BUCKLES ARE SECURELY AND CORRECTLY ATTACHED TO PREVENT ACCIDENTAL REMOVAL!

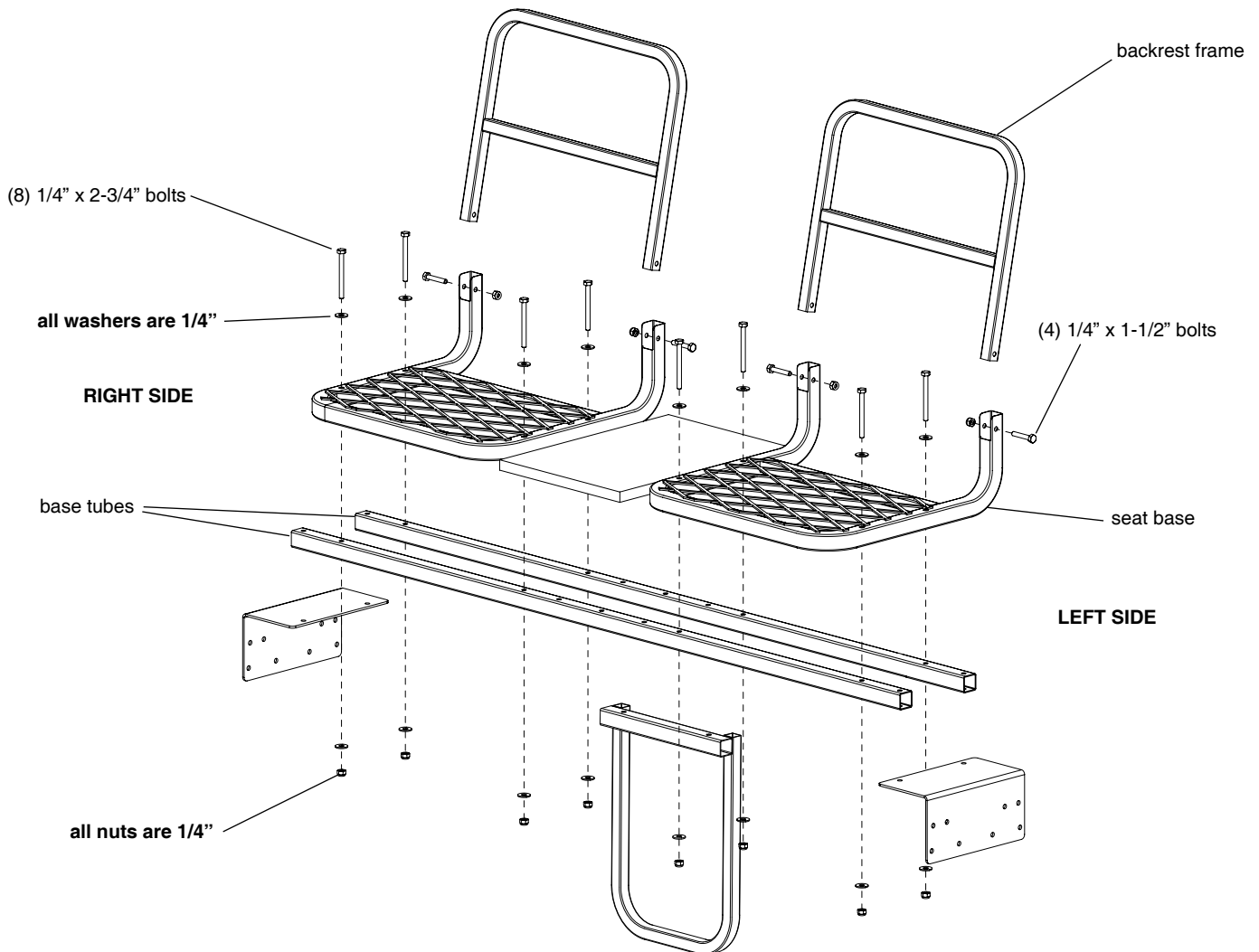
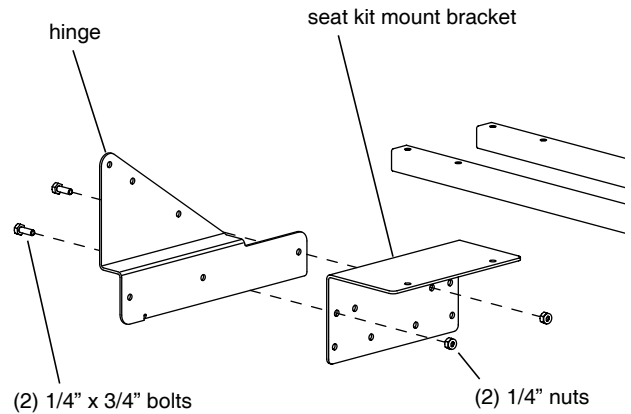


FIGURE 3B

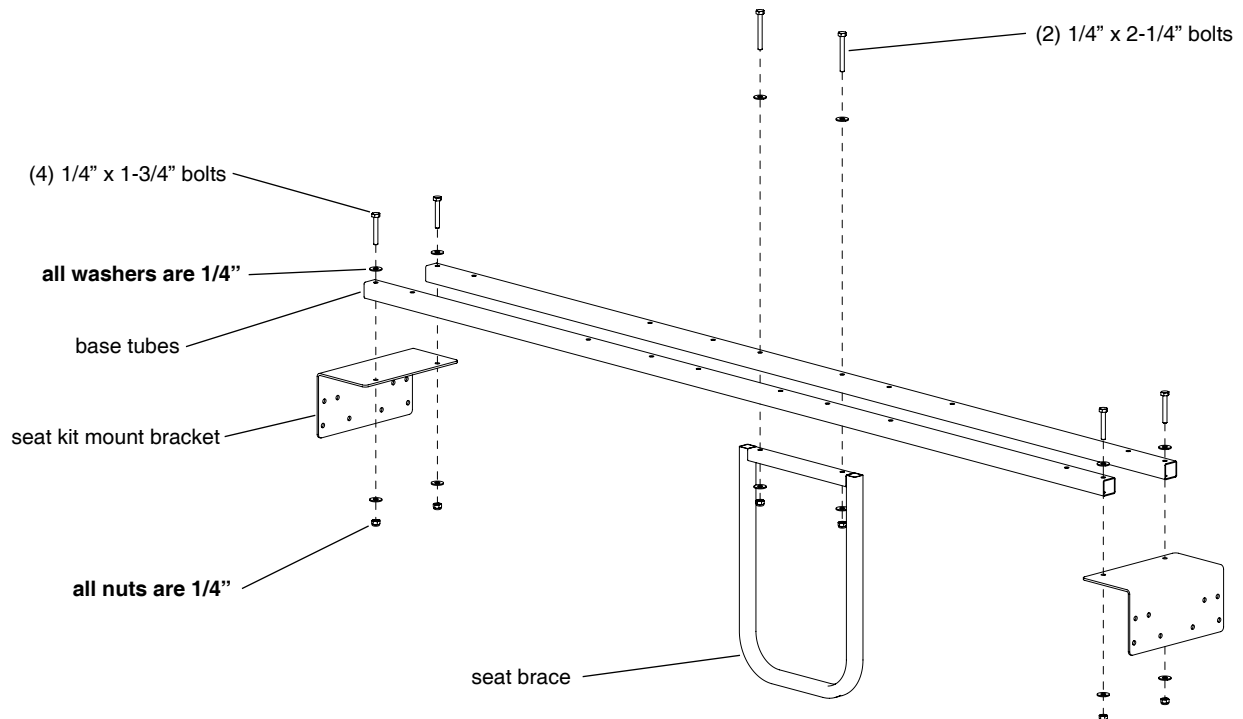
**Quickflip™ 2 (69167) & Quickflip™ 3 (69168)**

**FOR QUICKFLIP 3**

1. Attach (2) seat kit mount brackets (68430) to each hinge assembly using (4) provided 1/4-20 x 3/4" hex head bolts and nyloc nuts. Make sure the mount brackets are positioned in the correct hole locations so seat brace and seat positions are correct later in instructions. **SEE FIGURE 4.**
2. Attach (2) base tubes (68441) to the top side of seat kit mount brackets using (4) provided 1/4-20 x 1-3/4" bolts, nyloc nuts and (8) washers. **SEE FIGURE 5A.**
3. Attach seat brace (68440) to bottom of rear base tube using (2) provided 1/4-20 x 2-1/4" bolts, nyloc nuts and (4) washers. **SEE FIGURE 5A.**



**FIGURE 4 (right side shown)**



**FIGURE 5A**



Quickflip™ 2 (69167) & Quickflip™ 3 (69168)

4. Attach (3) seat bases to top of base tubes using (12) provided 1/4-20 x 2-3/4" bolts, nyloc nuts and (24) washers. **SEE FIGURE 5B.**
5. Attach backrest frame to each seat base using (6) provided 1/4-20 x 1-1/2" bolts and nyloc nuts. **SEE FIGURE 5B. You may now tighten all nut & bolt assemblies. Be sure not to over tighten or crush tubing when tightening!**
6. Attach (3) removable seat cushions (68162) to the top of seat bases and snap the side release buckles together. Pull straps tight so seat is not loose.
7. Attach (3) removable backrest cushions (68163) to the backrest frames and secure with Velcro.

**WARNING**

BE SURE SEAT PAD & BUCKLES ARE SECURELY AND CORRECTLY ATTACHED TO PREVENT ACCIDENTAL REMOVAL!

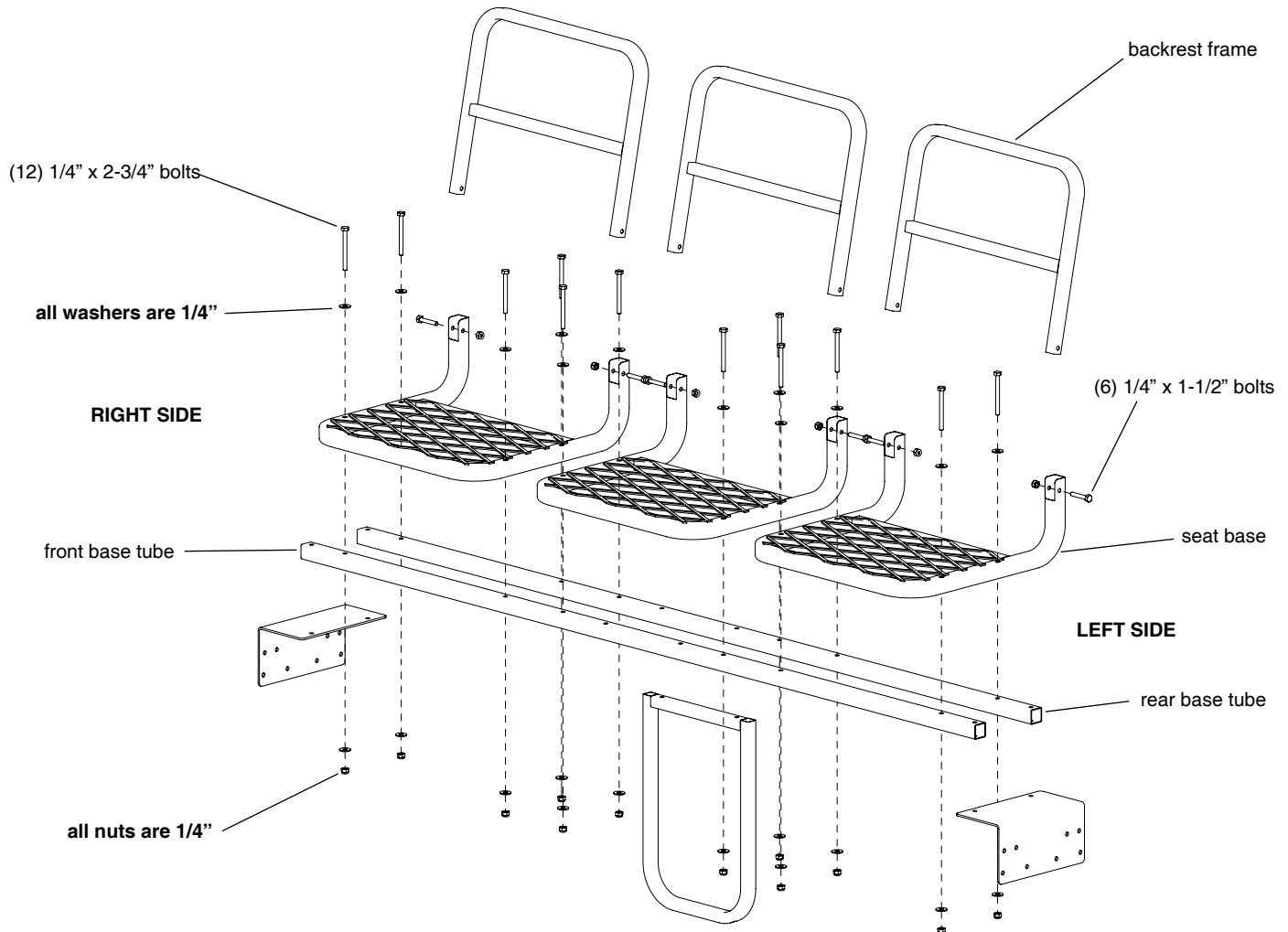


FIGURE 5B

Quickflip™ 2 (69167) & Quickflip™ 3 (69168)

**FOR BOTH MODELS**

1. Insert (3) hinge upright poles from each hinge and insert them into the (3) top cross brace poles (large loop poles). Push the snap buttons inward to allow cross brace poles to go over hinge poles and slide them to their shortest height (transport mode). **SEE FIGURE 6.**

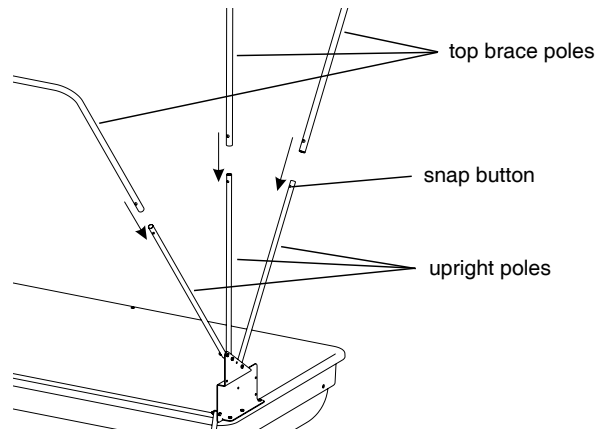
**NOTE: Top cross brace poles are taller and wider than the bottom cross brace pole.**

**NOTE: If cross brace poles are not assembled correctly, added tension will be applied to the fabric skin.**

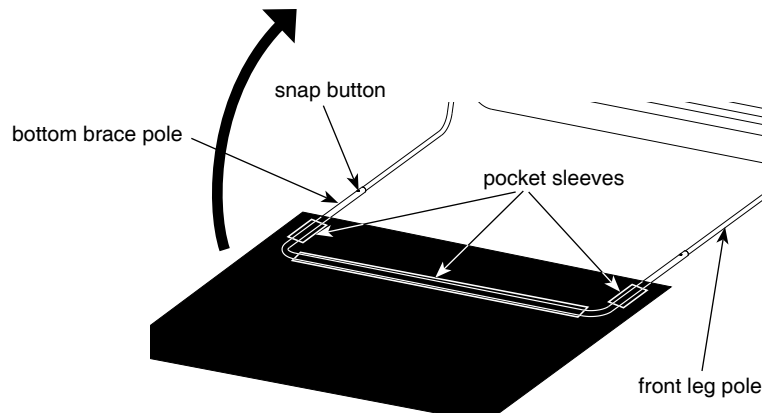
2. Unfold skin and locate the Eskimo logo near the zippered door, which is the front of the shelter. With front of shelter skin laying face down on the ground in front of shelter, locate the (3) fabric sleeves sewn to the bottom seam on front side of shelter. Slide bottom cross brace pole through the (3) fabric sleeves. Push the snap buttons inward to allow cross brace pole to go over "J-pipe" hinge poles. Snap into place. **SEE FIGURE 7.**

**NOTE: Snap button should align with hole in cross brace pole. If not, you have fed the cross brace pole through fabric sleeves incorrectly and the cross brace will need to be flipped over.**

3. Drape the rest of the shelter skin over the shelter sled, seats and poles and position it the best you can.



**FIGURE 6**



**FIGURE 7**

## Quickflip™ 2 (69167) & Quickflip™ 3 (69168)

4. **For Quickflip 2 only**, assemble the two sets of door spreader poles (69356 & 69357) by sliding male half into the female half and snapping in place with snap button. **SEE FIGURE 8.**

### FOR BOTH MODELS

5. Unzip door and move to the inside of shelter and extend the (3) top cross brace poles and snap into place. Place back spreader pole with stud, both roof spreader poles and both door spreader poles into position by snapping C-clip over cross brace poles. For back spreader pole, simply place end with stud into pre-drilled hole in back lip of sled. Attach all Velcro loops to cross brace poles. **SEE FIGURES 8 & 9.**
6. Move to outside of shelter. Find the center of the edge trim and line it up with the center of sled lip on back side of shelter. Pull down on the skin evenly over the sled lip until it is snug.

**NOTE: When pulling skin tight, DO NOT lift the bottom cross brace pole off the ground. Bottom cross brace pole should always contact the ground.**

Temporarily press the edge trim over the skin and sled lip. Using a rubber mallet may be helpful to press over the sled lip.

7. Secure edge trim in place using #6 3/8" sheet metal screws.

**NOTE: Screws should be spaced apart evenly. This step does mean you will put very small holes in your skin to keep the edge trim and skin securely attached to sled lip. This will in no way affect the performance of your shelter.**

8. Push ends of 8' tow rope through holes provided at the front of sled and knot each end to secure. This tow rope is designed for manual pulling by hand only. Do not tow behind a motorized vehicle with rope. **For high speed towing you should purchase the Eskimo Tow Hitch accessory.**

**IMPORTANT NOTE: If purchasing a tow hitch for your Eskimo ice shelter, it is highly recommended that you also purchase a high speed tracking kit to help extend the life of your sled and prevent unnecessary damage. Failure to do so may result in voiding of your warranty.**

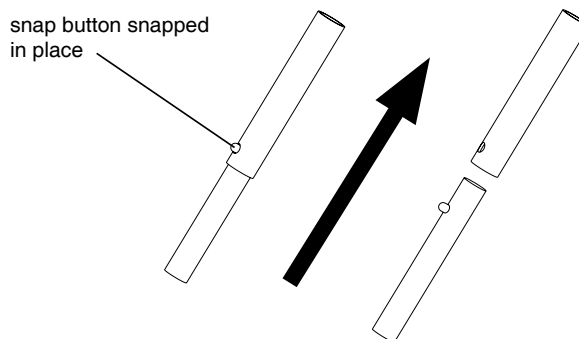


FIGURE 8

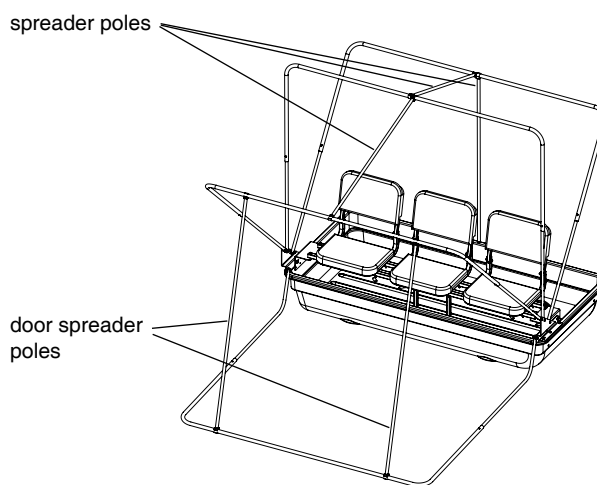


FIGURE 9 (Quickflip 3 shown)

**Quickflip™ 2 (69167) & Quickflip™ 3 (69168)**

---

**SET-UP AND TAKE-DOWN INSTRUCTIONS**

**SET-UP:** From the outside or inside of shelter depending on your preference, start with the bottom cross brace pole and pull out all cross brace poles and snap into place. As you pull out each cross brace pole and snap into place, flip all cross braces over to the in use position. Secure all spreader poles in between all cross brace poles by snapping C-clips over cross brace poles.

By removing the back spreader pole and the top back spreader pole, you can flip the shelter back halfway and use it as a wind break on nice days.

**TAKE-DOWN:** Close all window covers, vent covers and zip door shut. Remove all spreader poles and place in bottom of sled. Starting with the rear cross brace, push snap buttons in and retract all cross brace poles to their shortest length. Work from the rear cross brace to the front cross brace that lies on the ground/ice. Flip all poles back. **Use extreme caution when flipping poles** for transport position and make sure no part of the skin gets pinched, caught or stuck between any poles or in any pinch points. Fold excess skin inside sled when complete.

**NOTE:** *Use extreme caution so you don't rip or tear any portion of the skin, especially around the hinges or any pinch point areas.*

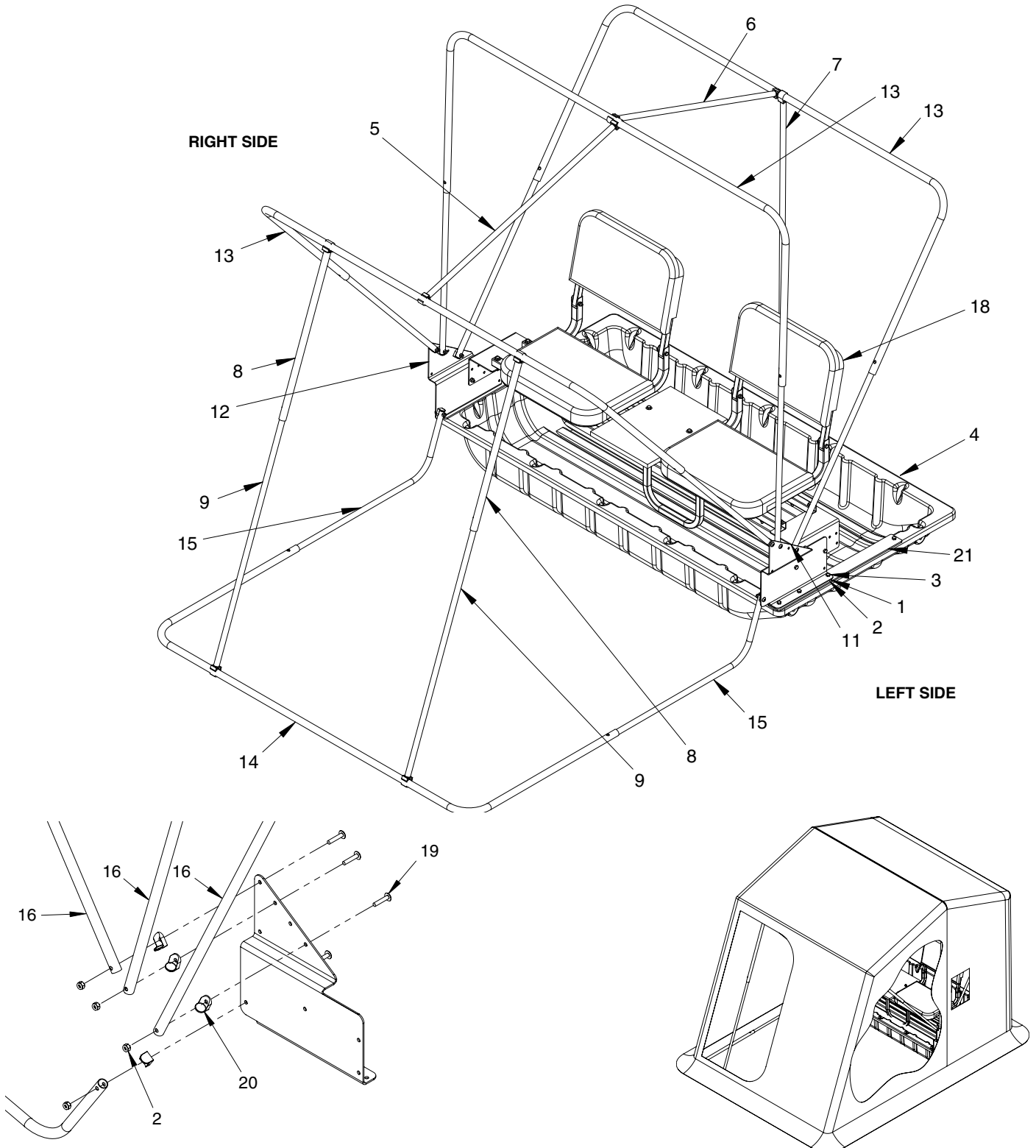
**LONG TERM STORAGE**

- Always make sure your ice shelter is completely dry before storing for long periods of time. Storing your ice shelter when damp or wet may cause mold and mildew damage.
- Remove skin, padded seats and padded backrests from ice shelter sled and poles. Clean all salt, moisture and debris from your shelter skin
- Store skin, padded seats and padded backrests in a cool, dry place away from rodents.
- Clean all salt, moisture and debris from the sled and poles of your shelter. Wipe down poles with WD-40® or similar types of silicon to deter from corrosion.

**NOTE:** *Before attaching skin for use, re-wipe the poles to remove excess WD-40® or silicon substance to deter from damage to your skin.*

- Store poles and sled in a cool, dry place.

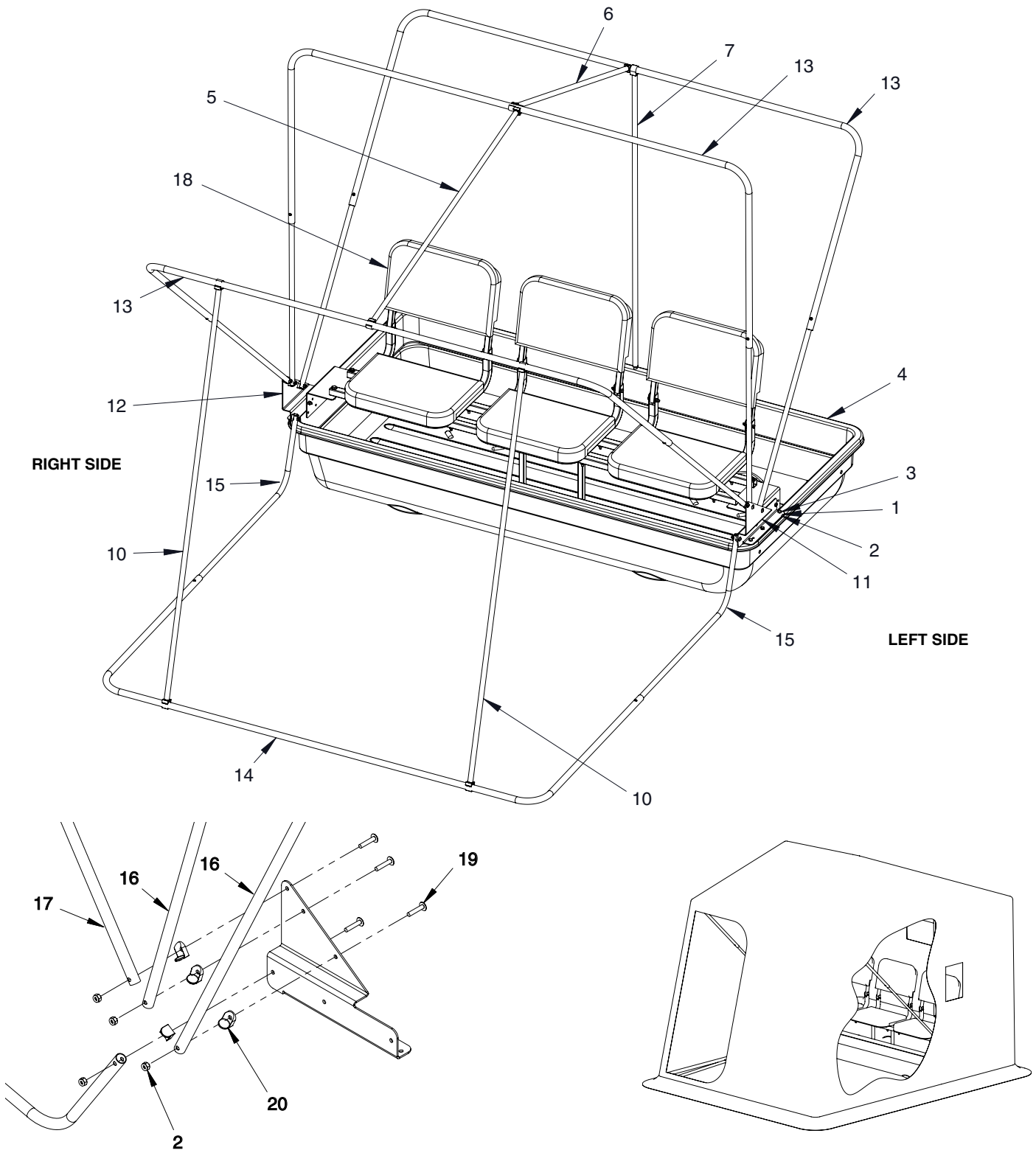
## QUICKFLIP 2 PARTS



Quickflip 2 hinge assembly (right side shown)

Quickflip 2 assembled

**QUICKFLIP 3 PARTS**



Quickflip 3 hinge assembly (right side shown)

Quickflip 3 assembled

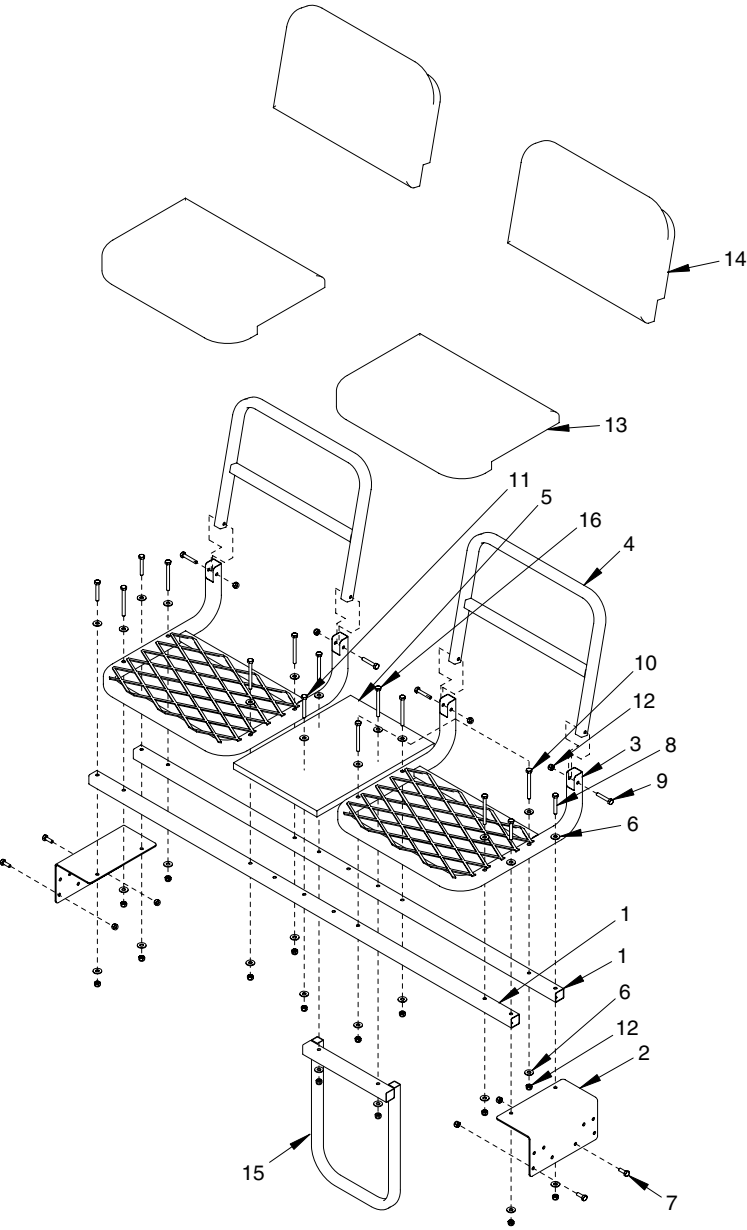
## Quickflip™ 2 (69167) &amp; Quickflip™ 3 (69168)

## PARTS LISTS

REF. NO.	DESCRIPTION	QUICKFLIP 2 PART NO.	QF 2 QTY.	QUICKFLIP 3 PART NO.	QF 3 QTY.
1	WASHER, 1/4" FLAT	48261B	8	-	-
1	WASHER, SAE	-	-	67435	6
2	NUT, 1/4-20 HEX NYLOCK	67538	16	67538	14
3	BOLT, 1/4-20 X 7/8" HHCS GR5	67541	8	67541	6
4	SLED	68380	1	69390	1
5	POLE ASSEMBLY, TOP FRONT SPREADER (INCLUDES TWO .706" CLIPS)	68331	1	68340	1
6	POLE ASSEMBLY, TOP BACK SPREADER (INCLUDES TWO .706" CLIPS)	69679	1	69331	1
7	POLE ASSEMBLY, BACK SPREADER (INCLUDES ONE .706" CLIP & ONE .706" STUD)	68422	1	68406	1
8	POLE ASSEMBLY, FRONT TOP SPREADER (INCLUDES ONE .706" CLIP)	69356	2	-	-
9	POLE ASSEMBLY, FRONT BOTTOM SPREADER (INCLUDES ONE .875" CLIP)	69357	2	-	-
10	POLE ASSEMBLY, FRONT SPREADER (INCLUDES TWO .706" CLIPS)	-	-	68428	2
11	BRACKET, LEFT HINGE	69147	1	68303	1
12	BRACKET, RIGHT HINGE	69146	1	68302	1
13	POLE, TOP CROSS BRACE	68429	3	68424	3
14	POLE, BOTTOM CROSS BRACE	69617	1	69320	1
15	POLE ASSEMBLY, J-LEG	69678A	2	69310A	2
16	POLE ASSEMBLY, MIDDLE UPRIGHT	69652	6	69300A	4
17	POLE ASSEMBLY, FRONT UPRIGHT	-	-	69305A	2
18	SEAT KIT (SEE PAGES 12 & 13 FOR PARTS)	68436	1	68442	1
19	BOLT 1/4-20 X 1-1/4" PHILLIPS TRUSS HD GR2	67400	8	67400	8
20	CAP, HINGE POLE	68305	8	68305	8
21	SUPPORT BAR, SLED	69677	5	-	-
<b>ITEMS BELOW NOT SHOWN</b>					
-	SNAP BUTTON, 1/4"	67501	10	67501	8
-	CLIP, .875"	69124	2	-	-
-	CLIP, .706"	69134	7	69134	9
-	STUD, .706"	68309	1	68309	1
-	TOW ROPE	67589	1	67589	1
-	SCREW, #6 X 3/8" PHILLIPS TRUSS HD	69629	13	69629	13
-	SHELTER SKIN, RED	68017	1	68018	1
-	EDGE TRIM, 1/4" CUT TO 114"	-	-	69306	1
-	EDGE TRIM, 1/4" CUT TO 93.5"	69654	1	-	-
-	WINDOW REPLACEMENT, 8" X 12"	69531	2	69531	2
-	WINDOW REPLACEMENT, 8" X 28"	69533	1	69533	1
-	WINDOW REPLACEMENT, 13.5" X 13.5"	69534	1	69534	1
<b>REPAIR PARTS</b>					
-	PATCH KIT, RED	69742	-	69742	-

**Quickflip™ 2 (69167) & Quickflip™ 3 (69168)**

**QUICKFLIP 2 SEAT PARTS**

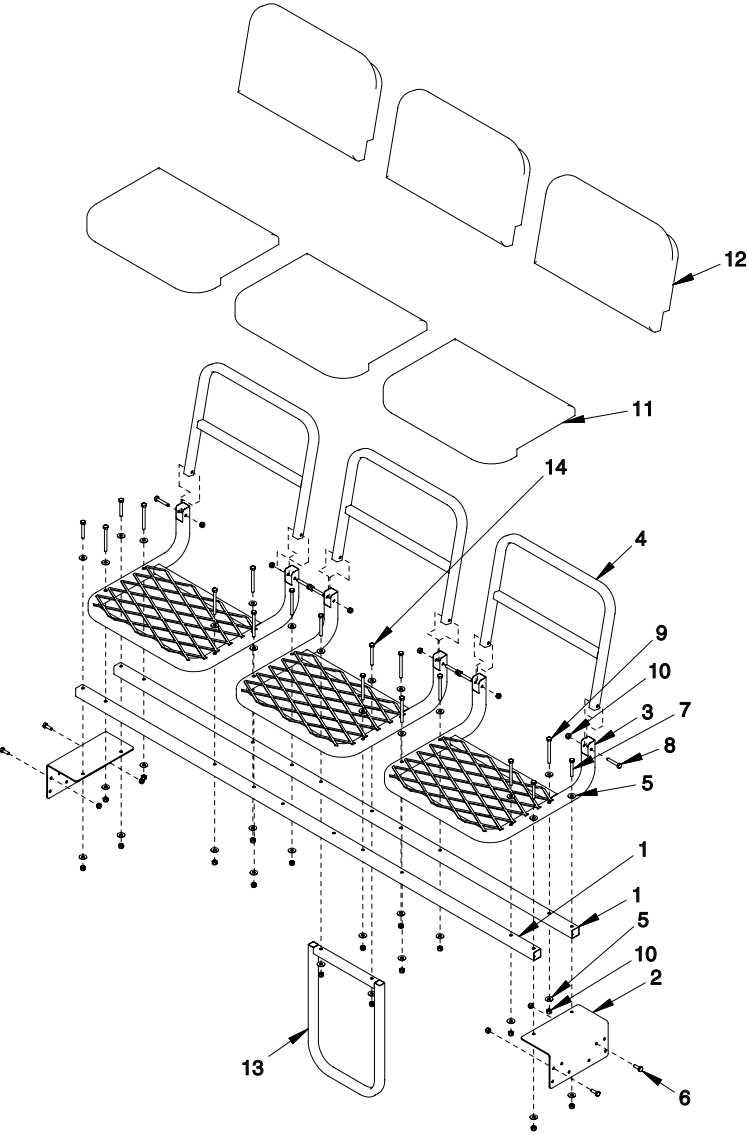


REF. NO.	DESCRIPTION	PART NO.	QTY.
1	TUBE, SEAT BASE	68431	2
2	BRACKET, SEAT MOUNT	68430	2
3	SEAT BASE WELDMENT	68435	2
4	BACKREST FRAME WELDMENT	68433	2
5	TABLE	68439	1
6	WASHER 1/4"	48261	30
7	BOLT 1/4-20 X 3/4" HH GR5	8930	4
8	BOLT 1/4-20 X 1-3/4" HHCS GR5	48250	4
9	BOLT 1/4-20 X 1-1/2" HHCS GR5	48240	4
10	BOLT 1/4-20 X 2-3/4" HHCS GR5	67540	8
11	BOLT 1/4-20 X 2" HHCS GR5	48153	1
12	NUT 1/4-20 HEX NYLOC	67538	23
13	SEAT PAD RED	68162	2
14	BACKREST PAD RED	68163	2
15	SEAT BRACE WELDMENT	68172	1
16	BOLT 1/4-20 X 3" HHCS GR5	48280B	2



Quickflip™ 2 (69167) & Quickflip™ 3 (69168)

**QUICKFLIP 3 SEAT PARTS**



REF. NO.	DESCRIPTION	PART NO.	QTY.
1	TUBE, SEAT BASE	68441	2
2	BRACKET, SEAT MOUNT	68430	2
3	SEAT BASE WELDMENT	68435	3
4	BACKREST FRAME WELDMENT	68433	3
5	WASHER 1/4"	48261	36
6	BOLT 1/4-20 X 3/4" HH GR5	8930	4
7	BOLT 1/4-20 X 1-3/4" HHCS GR5	48250	4
8	BOLT 1/4-20 X 1-1/2" HHCS GR5	48240	6
9	BOLT 1/4-20 X 2-3/4" HHCS GR5	67540	12
10	NUT 1/4-20 HEX NYLOC	67538	28
11	SEAT PAD RED	68162	3
12	BACKREST PAD RED	68163	3
13	SEAT BRACE WELDMENT	68440	1
14	BOLT 1/4-20 X 2-1/4" HHCS GR5	48271	2

## Quickflip™ 2 (69167) &amp; Quickflip™ 3 (69168)

## FAQ'S: (Frequently Asked Questions)

- **How can I keep mice and other rodents from damaging my ice shelter?**

During the off season, you should always remove your ice shelter skin, padded seats and padded backrests from the sled and poles and make sure it is dry. Fold skin up, store items in a large plastic container with lid and store in a cool, dry place. The use of moth balls or dryer sheets may be helpful also.

- **My poles are noisy and don't run as smooth as they did originally. Is there a fix?**

Applying WD-40® or a similar type of silicon spray works well for lubricating the poles for easier operation and also deters from corrosion. You should do this maintenance at least seasonal, especially before storing for long term periods. Wipe off excess lubricant so it does not damage your ice shelter skin. Using a rod with a cloth attached to the end of it, apply the WD-40® or silicon lubricant to the rag and wipe the inside of the large poles so they have a lubricated surface for the hinge poles to slide on.

- **My zipper functions roughly or freezes up from snow/ice. How can I fix this?**

You can try a silicon spray to help lubricate it, or purchase an actual Zipper Lube® brand lubricant found in many sporting goods stores, in the camping section. Either way, use with caution and wipe off excess lubricant so it does not damage your ice shelter skin.

- **For attaching the edge trim to my skin and sled, do I actually drill holes through the skin?**

Yes, this is the best way to make a seal between the skin and sled. It also keeps the edge trim securely in place and will not fall off during transport. If you remove the skin from the poles and sled during the off season, the skin will go back on the same way and you should be able to use the same holes for the screws as you did the previous season.

- **The edge trim is hard to put on the sled lip, is there a secret?**

You should apply the edge trim to the sled lip at room temperature which makes it more pliable. The use of a rubber mallet will help too.

- **Why are my windows turning cloudy when they get wet?**

Sometimes if your windows get extremely wet, the moisture can penetrate the windows which gives them a cloudy appearance. This can easily be remedied by removing the windows and bringing them into a warm environment (indoors) and letting the moisture retreat from the window which will clear them back up to the original appearance.

- **I have a tear in my skin, how do I repair it?**

You can call or e-mail us to purchase a patch kit which consists of a 12" x 12" piece of skin material and an adhesive to apply the patch to the tear area. This should be done at room temperature. Allow at least 24 hours for adhesive to set to assure proper adhesion.

- **My shelter lets some water come through it, how can I remedy that?**

You may purchase a seam sealer or silicon spray to help seal the seams to help repel water, such as Camp Dry® which can be found in many sporting goods stores, in the camping section. **See Important Safety Precautions on page 4.** Eskimo ice shelters are not water proof.

- **I can see small pin holes in my shelter skin, why?**

The coating on the inside of shelter skin is done to help darken the interior. The pin holes are normal and may increase from normal exposure to the elements or from normal wear and tear. This will not affect the performance of the ice shelter in any way and is normal.

- **I can see cracks on the inside of my shelter skin, why?**

This is also normal due to exposure to the elements and normal wear and tear. When you fold your shelter for transport, lines and creases develop in the fabric. This will not affect the performance of the ice shelter in any way.

- **Will my ice shelter leak from the small pin holes in skin?**

Many variables can come into play. It depends on the outside air temperature, the air temperature inside the shelter, how much heat you are using inside shelter, etc. Some leaking could occur due to condensation, but that is normal. This can be controlled better by using the numerous air vents, windows and doors that are on your shelter.

- **Do I have to have a tracking kit to tow my ice shelter?**

For high speed towing behind a snowmobile or ATV, we highly recommend you purchase a high speed tracking kit so you do not cause unnecessary or premature damage to your ice shelter sled. If you are only going to pull your ice shelter by hand, a high speed tracking kit is not necessary, but does make it easier to pull.

- **Can I wash my ice shelter skin?**

You can use a mild bleach and water solution to get rid of mold or mildew. If you are just wanting to wash your skin, you can use a mild soap and water mixture. Do not machine wash your skin.

Quickflip™ 2 (69167) &amp; Quickflip™ 3 (69168)

**WARRANTY****ONE YEAR LIMITED WARRANTY**

Ardisam, Inc., a manufacturing company, warrants this Eskimo Ice Shelter to be free from defects in the material or workmanship for a period of one year from the date of purchase. During the one year warranty of this product, Ardisam will furnish 100% parts and labor to correct any defect caused by faulty material or workmanship. The warranty does not cover cracked windows, tent tears, or bent poles due to high wind conditions or unattended use. Warranty work must be sent directly to Ardisam, Inc. or to an authorized service center. **To obtain warranty service and/or replacement instructions, you must have prior approval before shipping package by calling our customer service department at 1-800-345-6007 for a return material authorization number (RMA#).** All items must be shipped prepaid. Ardisam, Inc. will at no charge, repair or replace, at their discretion, any defective part which falls under the conditions stated above. Ardisam retains the right to change models, specifications and price without notice. This product if used as intended, will give you years of trouble free service. We hope you will enjoy the quality of our products for years to come. **For replacement parts, phone 1-800-345-6007 or go online to GetEskimo.com.**

*This warranty applies to the original owner with a proof of purchase and is not transferable. It supersedes all other warranties either expressed or implied and all other obligations to liabilities on our part. Ardisam, Inc. does not assume, and does not authorize any other person to assume for us, any liability in connection with the sale of our products. The warranty applies only to products which have not been subjected to negligent use, misuse, alteration, accident or repairs made by anyone not certified by Ardisam, Inc. This guarantee is void unless the warranty card is properly filled out and received by Ardisam, Inc., within 30 days of purchase.*



Eskimo, A Division of Ardisam, Inc.  
1360 First Avenue; P.O. Box 666  
Cumberland, Wisconsin 54829  
1-800-345-6007 · Fax (715) 822-4180  
E-mail: info@ardisam.com

## ACCESSORY CHART

ITEM #	DESCRIPTION	MSRP*
69171	Travel Cover, Quickflip 2	\$55.99
69195	High Speed Tracking Kit, Quickflip 2	\$59.99
69172	Travel Cover, Quickflip 3	\$64.99
69128	High Speed Tracking Kit, Quickflip 3	\$64.99
69105	Tow Hitch, Quickflip 2 & Quickflip 3	\$49.99

\* Prices shown do not include shipping & handling charges.

All prices are subject to change without notice. When ordering from manufacturer, there is a \$10.00 minimum order.

For replacement parts, phone 1-800-345-6007 or  
go online to [www.GetEskimo.com](http://www.GetEskimo.com)

Visit [www.ardisam.com](http://www.ardisam.com) and discover more innovations  
that will benefit you throughout the year.

**Eskimo®**  
HIGH PERFORMANCE ICE FISHING GEAR  
**GetEskimo.com**

Eskimo, Division of Ardisam, Inc.  
1360 First Avenue; P.O. Box 666  
Cumberland, Wisconsin 54829  
1-800-345-6007 · Fax (715) 822-4180  
E-mail: [info@ardisam.com](mailto:info@ardisam.com)

