



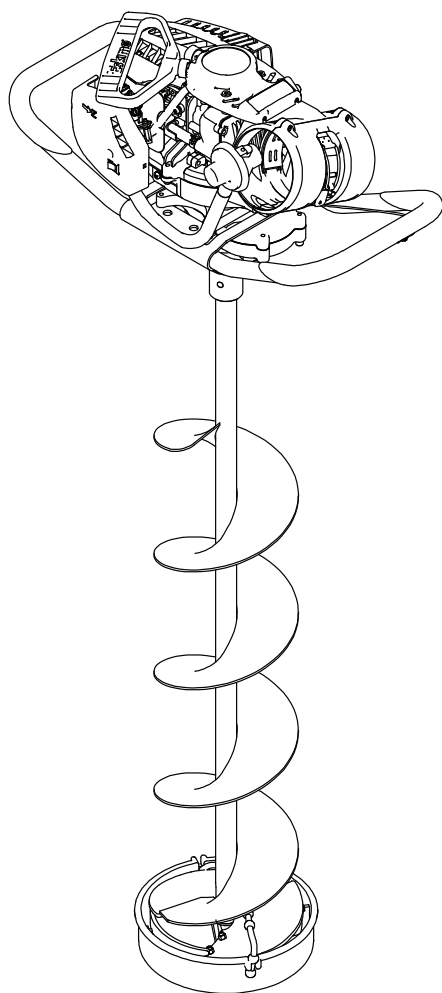
Illustrated Parts Breakdown

HC40Q8 & HC40Q10

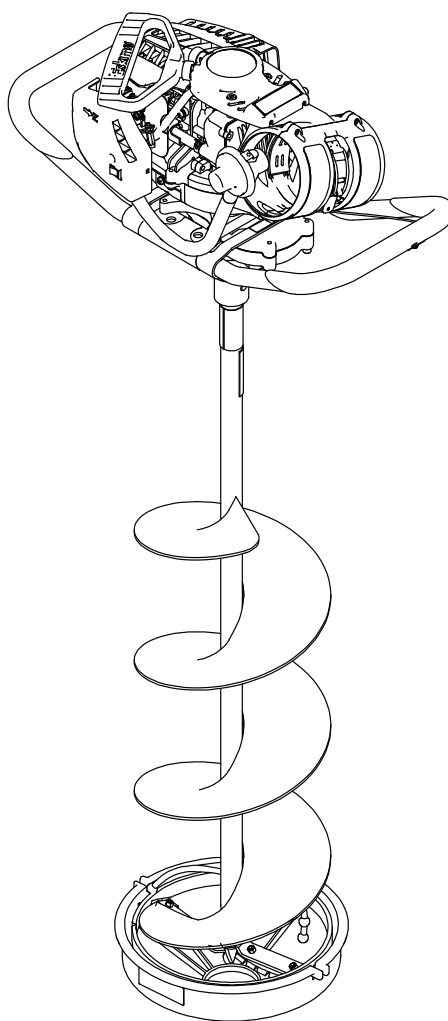
High Compression
Propane Powered
Ice Auger

ENGLISH

FRANÇAIS



HC40Q8



HC40Q10

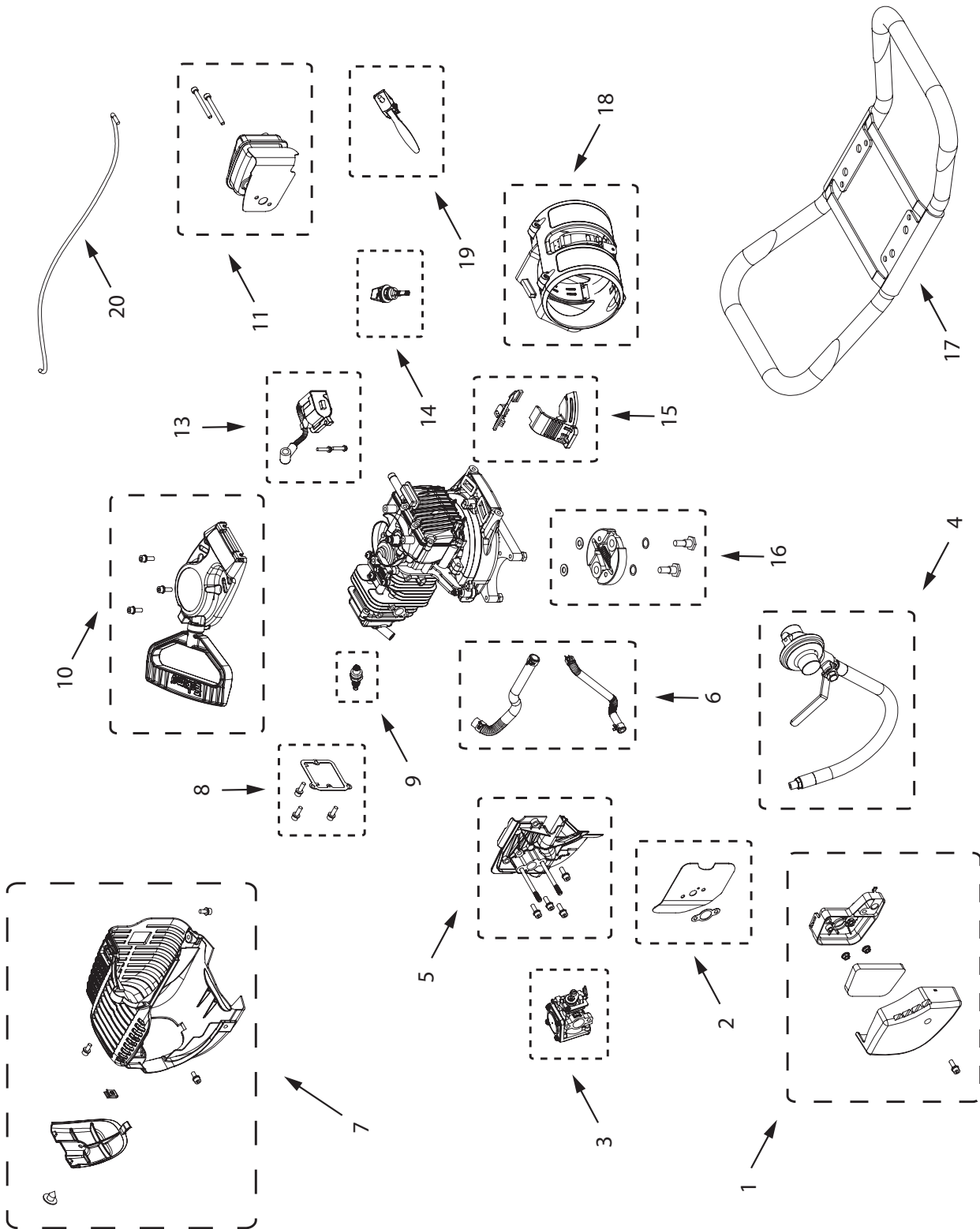
PROPANE POWERED ICE AUGER

Get parts online at
www.GetEskimo.com

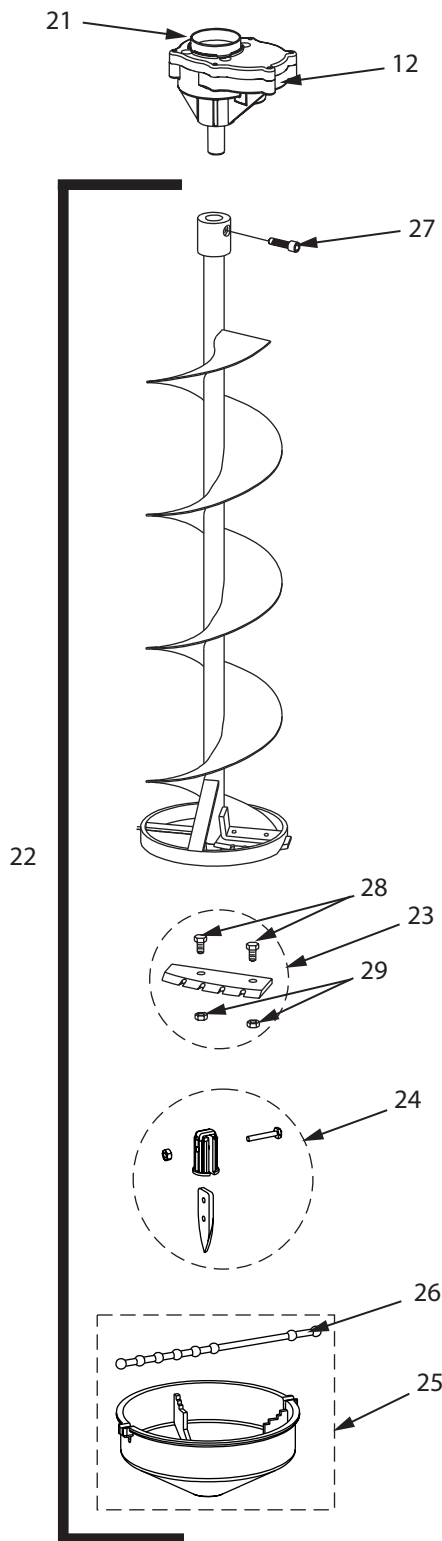


25535
ECN 11198
REV1: 07/15/2016
© Copyright 2016 Ardisam, Inc.
All Rights Reserved.

HC40 ILLUSTRATED PARTS BREAKDOWN



HC40 ILLUSTRATED PARTS BREAKDOWN



| ITEM NO. | PART NO. | DESCRIPTION | QTY. |
|----------|----------|---|------|
| 1 | 25514 | KIT 40CC AIR FILTER ASSEMBLY | 1 |
| 2 | 25526 | KIT CARBURETOR GASKETS HC40 | 1 |
| 3 | 25527 | KIT CARBURETOR HC40 | 1 |
| 4 | 25513 | REGULATOR ASSEMBLY | 1 |
| 5 | 25520 | KIT INSULATOR PROPANE | 1 |
| 6 | 25521 | KIT HOSES HC40 OLD STYLE | 1 |
| 7 | 25523 | KIT ENGINE SHROUD PLUG ACCESS | 1 |
| 8 | 25530 | KIT VALVE COVER GASKET | 1 |
| 9 | 13243 | SPARK PLUG CMR6A | 1 |
| 10 | 25531 | KIT RECOIL HC40 WINTER | 1 |
| 11 | 25525 | KIT MUFFLER HC40 | 1 |
| 12 | 3004119 | TRANSMISSION ASSEMBLY (HC40Q8) | 1 |
| | 300407 | TRANSMISSION ASSEMBLY (HC40Q10) | 1 |
| 13 | 25528 | KIT IGNITION COIL HC40 | 1 |
| 14 | 13393 | KIT OIL CAP WITH O-RING 40CC 4 CYCLE | 1 |
| 15 | 24185 | KIT FLYWHEEL SHROUDS | 1 |
| 16 | 11235 | KIT CLUTCH 76.76MM OD VIPER | 1 |
| 17 | 4828 | HANDLEBAR AUGER POWER BUTTERFLY | 1 |
| 18 | 19520 | KIT HOLDER PROPANE BOTTLE 40CC | 1 |
| 19 | 4825 | KIT LONG THROW TRIGGER | 1 |
| 20 | 14644 | THROTTLE CABLE AUGER STEEL HANDLE BAR | 1 |
| 21 | 3004100 | CLUTCH DRUM ASSEMBLY (5/8" THREADED VIPER) | 1 |
| 22 | QT8N | AUGER, ICE (8" QUANTUM RED) | 1 |
| | QT10N | AUGER, ICE (10" QUANTUM RED) | 1 |
| 23 | QB8 | BLADE, ICE REPLACEMENT (8" QUANTUM, INCLUDES NUTS AND BOLTS) | 1 |
| | QB10 | BLADE, ICE REPLACEMENT (10" QUANTUM, INCLUDES NUTS AND BOLTS) | 1 |
| 24 | 90129 | ICE POINT, REPLACEMENT | 1 |
| 25 | 232A | KIT, BLADE PROTECTOR 8" QUANTUM) | 1 |
| | 233A | KIT, BLADE PROTECTOR 10" QUANTUM) | 1 |
| 26 | KITBPB | KIT, BUNGEE, BLADE PROTECTOR | 1 |
| 27 | 8955 | BOLT (3/8-16 X 1 1/4 SHCS GR8 BLK ZN F-T) | 1 |
| 28 | IB5816 | BOLT (M5 X 0.8 X 16 HH GR8.8 ZN F-T) | 4 |
| 29 | IN58 | NUT (5MM X 0.08 X 5 HNYLK GR8 ZN F-T) | 4 |



Eskimo™, Division of Ardisam, Inc.
1160 8th Avenue, PO Box 666
Cumberland, WI 54829
800-345-6007 | Fax 715-822-2223
E-mail: info@geteskimo.com

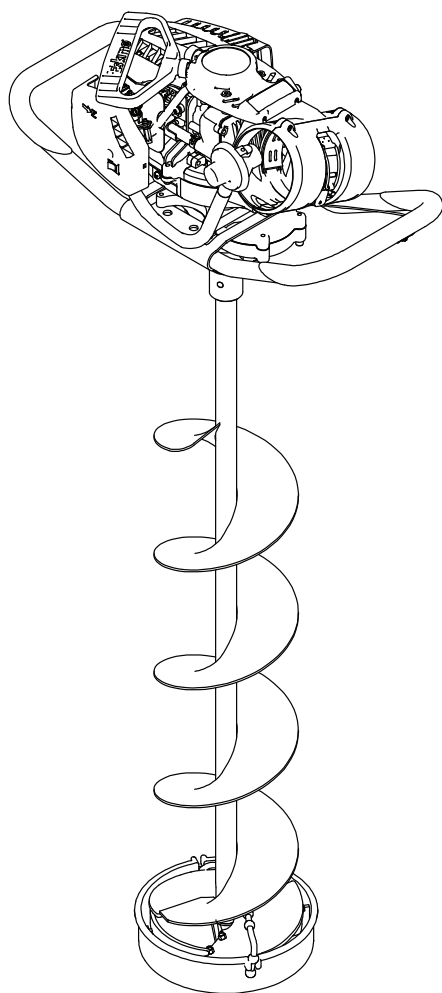


Illustration des pièces détachées

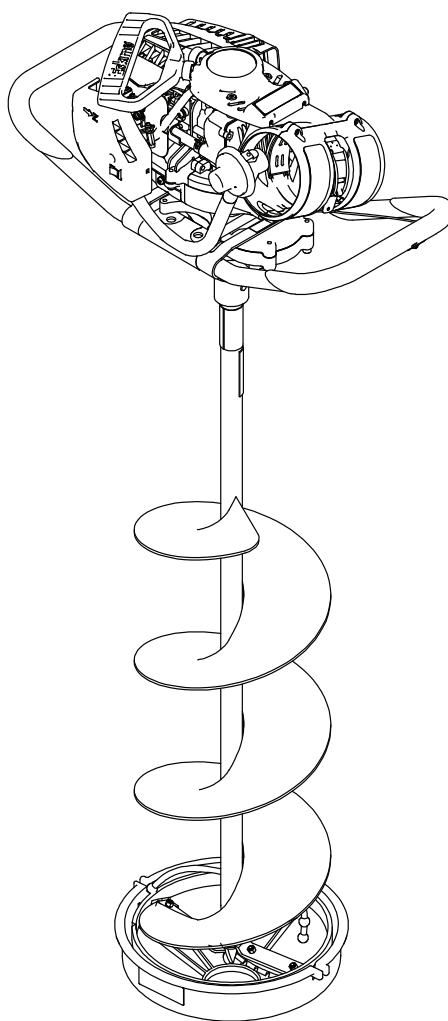
HC40Q8 et HC40Q10

Tarière à glace au
propane de haute
compression

FRANÇAIS



HC40Q8



HC40Q10

TARIÈRE À GLACE AU PROPANE



ILLUSTRATION DES PIÈCES DÉTACHÉES HC40

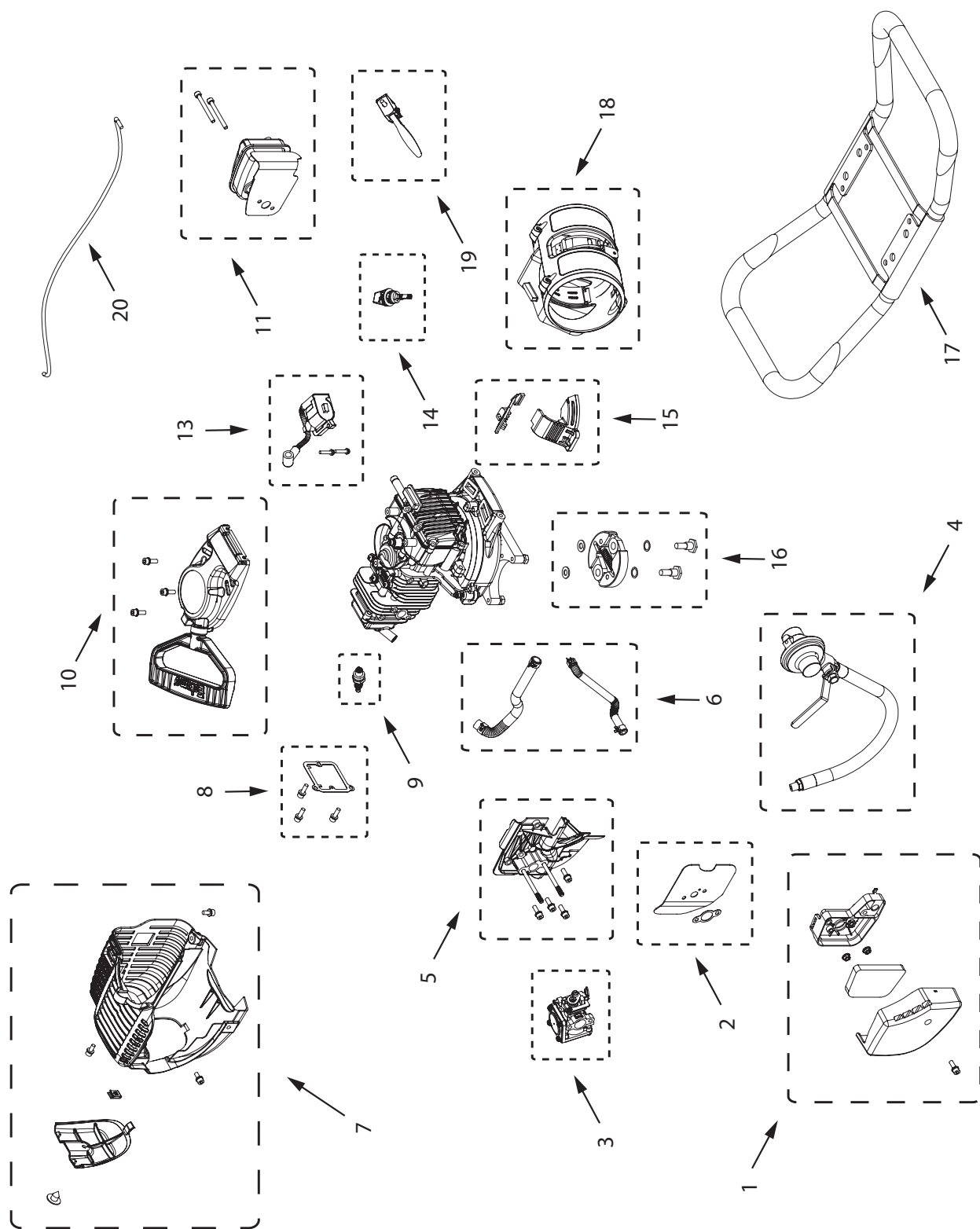
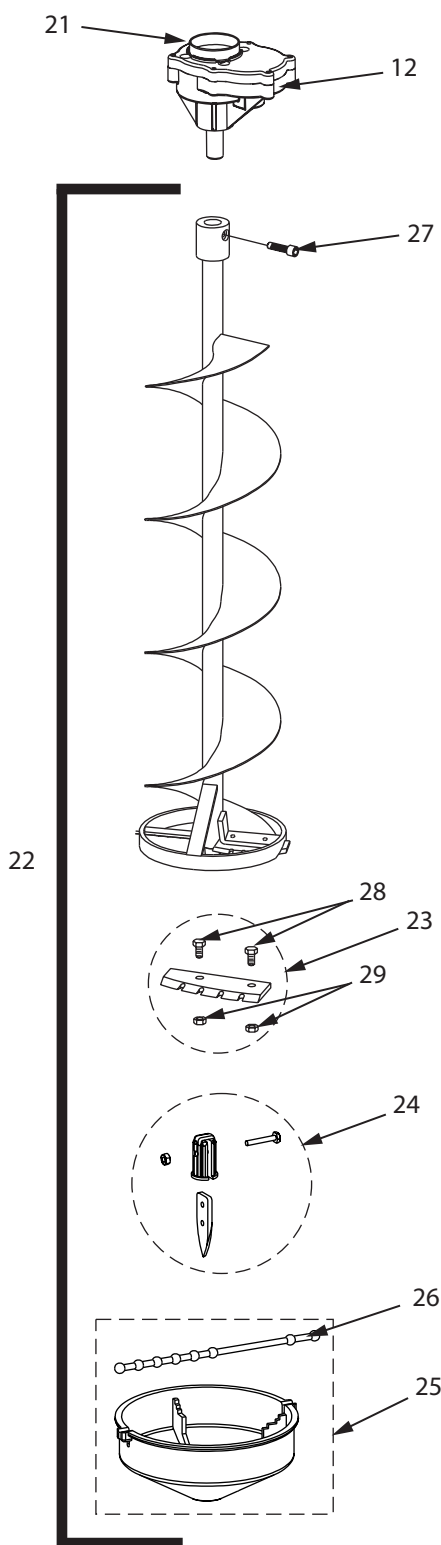


ILLUSTRATION DES PIÈCES DÉTACHÉES HC40


| REPÈRE | N° RÉF. | DESCRIPTION | QTÉ |
|--------|---------|---|-----|
| 1 | 25514 | 40CC ENSEMBLE DE FILTRE À AIR | 1 |
| 2 | 25526 | ENSEMBLE, JOINTS DE CARBURATEUR HC40 | 1 |
| 3 | 25527 | ENSEMBLE, CARBURATEUR DE HC40 | 1 |
| 4 | 25513 | ENSEMBLE REGULATEUR | 1 |
| 5 | 25520 | ENSEMBLE, ISOLANT DE PROPANE | 1 |
| 6 | 25521 | KIT TUYAUX DE HC40 OLD STYLE | 1 |
| 7 | 25523 | ENSEMBLE, LINCEUL COIFFE MOTEUR BRANCHEZ L'ACCÈS | 1 |
| 8 | 25530 | ENSEMBLE, SOUPAPE COUVERCLE DE JOINTS | 1 |
| 9 | 13243 | BOUGIE (CMR6A) | 1 |
| 10 | 25531 | ENSEMBLE, LANCEUR HC40 HIVER | 1 |
| 11 | 25525 | ENSEMBLE, DE SILENCIEUX HC40 | 1 |
| 12 | 3004119 | RÉDUCTEUR (HC40Q8) | 1 |
| | 300407 | RÉDUCTEUR (HC40Q10) | 1 |
| 13 | 25528 | ENSEMBLE, HC40 DE BOBINE D'ALLUMAGE | 1 |
| 14 | 13393 | ENSEMBLE, OIL CAP AVEC O-RING 40CC 4 CYCLE | 1 |
| 15 | 24185 | ENSEMBLE, LINCEUL VOLANT MOTEUR | 1 |
| 16 | 11235 | ENSEMBLE, EMBRAYAGE 76.76MM OD VIPER | 1 |
| 17 | 4828 | GUIDON PAPILLON, TARIÈRE À MOTEUR | 1 |
| 18 | 19520 | ENSEMBLE, PORTE-BOUEILLE PROPANE 40 CC | 1 |
| 19 | 4825 | ENSEMBLE, GÂCHETTE LONGUE | 1 |
| 20 | 14644 | COMMANDE DES GAZ, CÂBLE, GUIDON DE TARIÈRE ACIER | 1 |
| 21 | 3004100 | TAMBOUR D'EMBAYAGE (VIPER FILETÉ 5/8 PO) | 1 |
| 22 | QT8N | TARIÈRE À GLACE (8 PO QUANTUM ROUGE) | 1 |
| | QT10N | TARIÈRE À GLACE (10 PO QUANTUM ROUGE) | 1 |
| 23 | QB8 | COUTEAU À GLACE DE RECHANGE (8 PO QUANTUM, AVEC ÉCROUS ET BOULONS) | 1 |
| | QB10 | COUTEAU À GLACE DE RECHANGE (10 PO QUANTUM, AVEC ÉCROUS ET BOULONS) | 1 |
| 24 | 90129 | POINTE À GLACE DE RECHANGE | 1 |
| 25 | 232A | ENSEMBLE, PROTÈGE-LAME (8 PO QUANTUM) | 1 |
| | 233A | ENSEMBLE, PROTÈGE-LAME (10 PO QUANTUM) | 1 |
| 26 | KITBPB | ENSEMBLE, SANDOW, PROTÈGE-LAME | 1 |
| 27 | 8955 | BOULON (3/8-16 X 1-1/4 SHCS GR8 BLK ZN F-T) | 1 |
| 28 | IB5816 | BOULON (M5 X 0,8 X 16 HH GR8.8 ZN F-T) | 4 |
| 29 | IN58 | ÉCROU (5 MM X 0,08 X 5 HNYLK GR8 ZN F-T) | 4 |



Eskimo™, Division d'Ardisam, Inc.

1160 8th Avenue, PO Box 666

Cumberland, WI 54829

800-345-6007 | Télécopieur 715-822-2223

Courriel : info@geteskimo.com