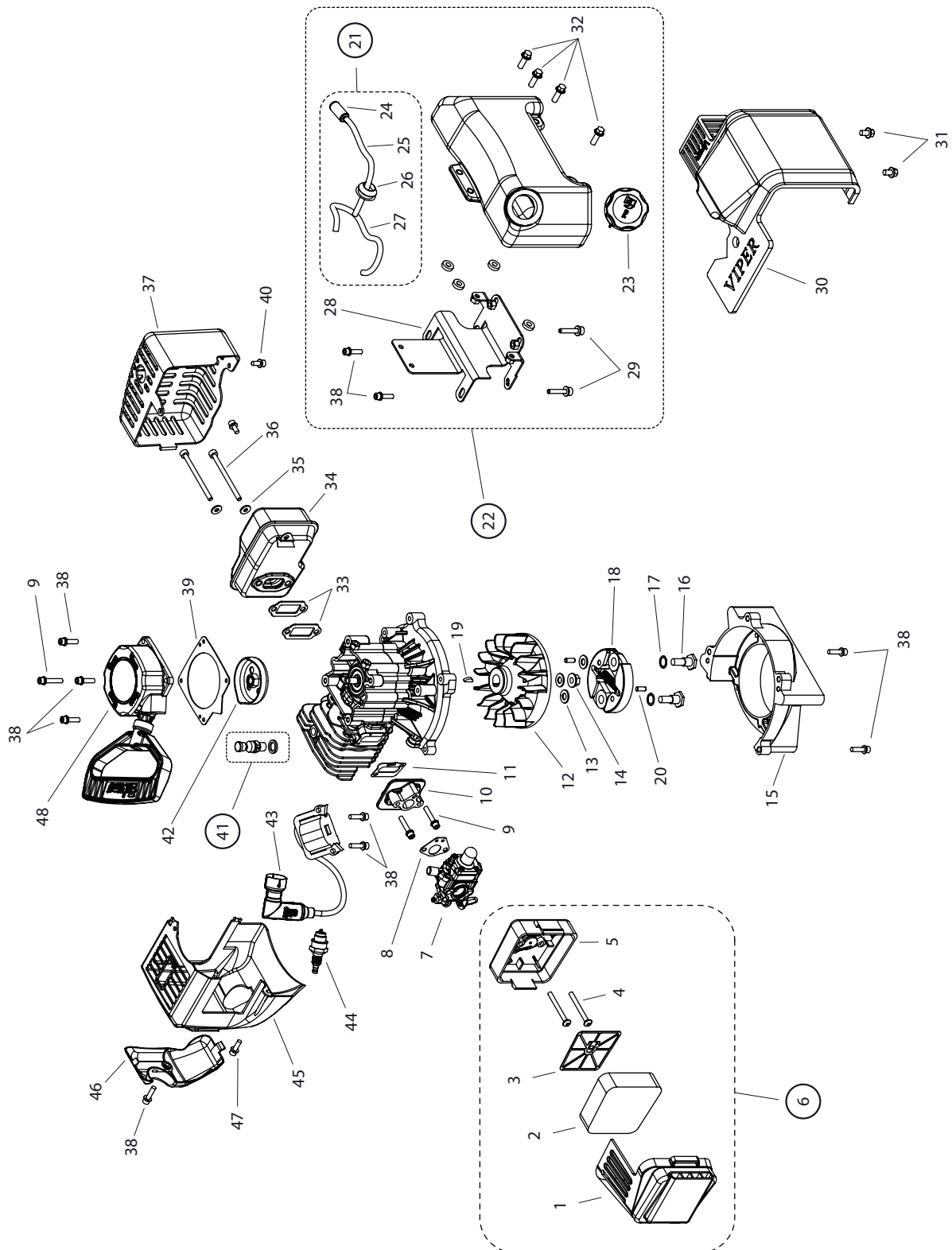




SHARK™
71cc POWER ICE AUGER

Z71 SHARK™ ENGINE PARTS EXPLOSION

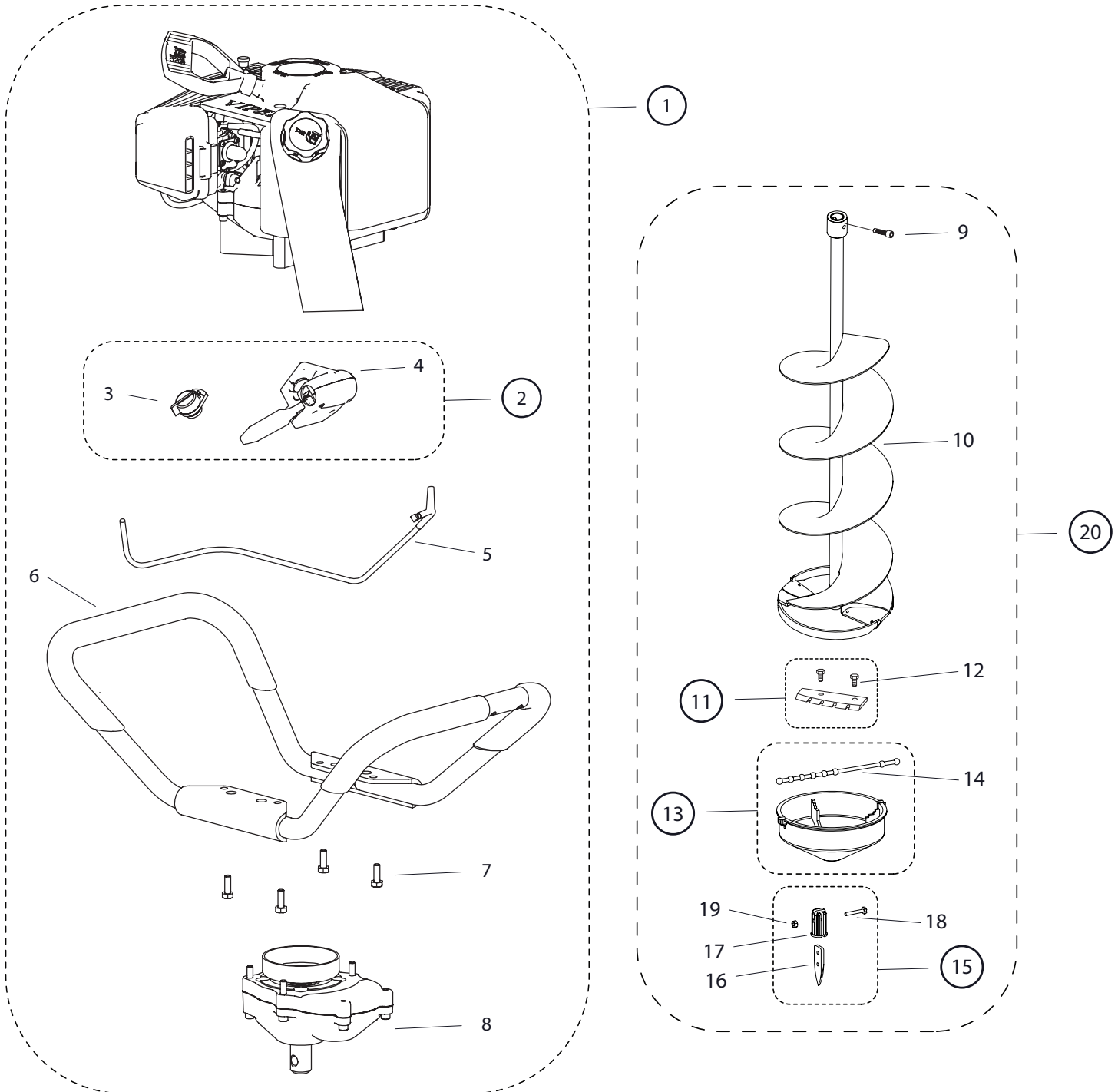


Z71 SHARK™ ENGINE PARTS LIST

KEY NO.	PART NO.	DESCRIPTION	QTY.
1	3004161	COVER AIR FILTER NO SWITCH HOLE 2 CYCLE	1
2	3004156	ELEMENT AIR FILTER BLOCK FOAM VIPER	1
3	3004157	FRAME AIR FILTER REINFORCEMENT VIPER	1
4	15209	BOLT M5X0.8X52 BSHCSSEMS GR8.8 ZN P-T	2
5	3004160	ASSY BASE AIR FILTER PRIMER HOLE 2 CYCLE	1
6	30857	KIT ASSEMBLY AIR FILTER Z71	1
7	12506	CARBURETOR 71CC 2 CYCLE VIPER	1
8	300479	GASKET CARBURETOR 43/51/71 VIPER	1
9	17952	BOLT M5X0.8X28MM SHCSSEMS GR8.8 YLZN P-T	2
10	3004139	WINDPIPE INTAKE 71CC VIPER ENGINE	1
11	3004138	GASKET INTAKE 71CC VIPER	1
12	3004142	FLYWHEEL MAGNETO 71CC VIPER	1
13	300462	WASHER 15.8 X 8.4 X 1.6MM	3
14	300337	NUT M8 X 1.25MM HHF	1
15	300411071	MOUNT RING & SHROUD 71CC VIPER	1
16	300450	BOLT M8 X 1.25 X 25 MM SHOULDER 10MM ZN	2
17	300449	WASHER M8 SPRING	2
18	300413	ASSY CENTRIFUGAL CLUTCH ROTOR VIPER	1
19	300338	KEY FLYWHEEL VIPER ENG	1
20	300467	PIN DOWEL 5MM DIA X 12MM LONG STEEL	2
21	3004117	KIT FUEL LINE ICE ONE HOLE GROMMET	1
22	12758	KIT GAS TANK THREE TAB STYLE ICE	1
23	11936	GAS CAP SELF VENT FINISHED	1
24	3004103	FILTER FUEL POROUS PLASTIC ALUMINUM CORE	1

KEY NO.	PART NO.	DESCRIPTION	QTY.
25	300498	FUEL LINE CUT TO 10.4 INCH	1
26	300466	GROMMET FUEL TANK ONE HOLE	1
27	300490	PRIMER LINE ICE CUT TO 5.4 IN	1
28	10682	WELDMENT THREE TAB GAS TANK MOUNT	1
29	11169	BOLT M5 X .8 X 28 MM SHCS GR 8.8 ZN	2
30	300332	COVER TANK VIPER ENGINE	1
31	300336	BOLT M6 X 1.0 X 10 HHF YL ZN F-T	2
32	4647	BOLT M6 X 1.0 X 18 FLANGE HH GR5 ZN F-T	4
33	3004136	GASKET MUFFLER 71CC VIPER	2
34	3004135	MUFFLER 71CC VIPER	1
35	300445	WASHER M5 HP ENG	2
36	12502	BOLT M5 X 75MM SHCS ZN	2
37	3004134	COVER MUFFLER 71CC VIPER	1
38	17946	BOLT M5X0.8X20MM SHCSSEMS GR8.8 YLZN P-T	10
39	300429	SPACER PLATE RECOIL 2-CYCLE	1
40	17888	BOLT M5X0.8X12MM SHCSSEMS GR8.8 YLZN P-T	2
41	24969	KIT Z71 COMPRESSION RELIEF	1
42	300491	CUP RECOIL CLUTCH 2 CYCLE VIPER	1
43	28599	IGNITION COIL ENGINE 71 CC VIPER ICES002	1
44	28600	SPARKPLUG NGK BPMR7A	1
45	3004140	SHROUD - ENGINE - 71CC VIPER	1
46	3004141	COVER ENGINE SHROUD 71CC VIPER	1
47	17945	BOLT M5X0.8X16MM SHCSSEMS GR8.8 YLZN P-T	1
48	12088	RECOIL ASSEMBLY HYPERCOIL MITTEN GRIP	1

Z71 SHARK™ POWERHEAD AND AUGER PARTS EXPLOSION



Z71 SHARK™ POWERHEAD AND AUGER PARTS LIST

KEY NO.	PART NO.	DESCRIPTION	QTY.
1	30974	KIT POWERHEAD SHARK 71CC 2 CYCLE	1
2	30929	KIT THROTTLE TRIGGER AND ON OFF SWITCH	1
3	28232	SWITCH ON/OFF WITH WIRES F1	1
4	28226	ASSEMBLY TRIGGER SWITCH F1	1
5	14644	THROTTLE CABLE AUGER STEEL HANDLE BAR	1
6	27967	HANDLEBAR AUGER ICE BUTTERFLY AL	1
7	90148	BOLT 1/4-20 X 3/4 HH GR5 BLK ZN W/ PATCH	4
8	26580	TRANSMISSION ASSEMBLY 25:1 LIGHT	1
9	8955	BOLT, SHCS 3/8-16 X 1-1/4"	1
10	228	WELDMENT AUGER 10 INCH QUANTUM	1
11	28345	KIT REPLACEMENT BLADES 10 IN ESKIMO	1
12	176	BOLT M5 X 0.8 X 10 SFH GR8.8 YL ZN	4
13	233A	BLADE PROTECTOR KIT 9" & 10" QUANTUM	1
14	8651	RUBBER STRAP	1
15	90129	ICE POINT REPLACEMENT ASSEMBLY	1
16	90166	POINT	1
17	90165	HOLDER, POINT	1
18	90136	BOLT, HH 10-24 X 1-1/4" STAINLESS	1
19	53606	NUT, HEX NYLOC 10-24	1
20	QT10N	ICE AUGER 10 INCH QUANTUM RED	1

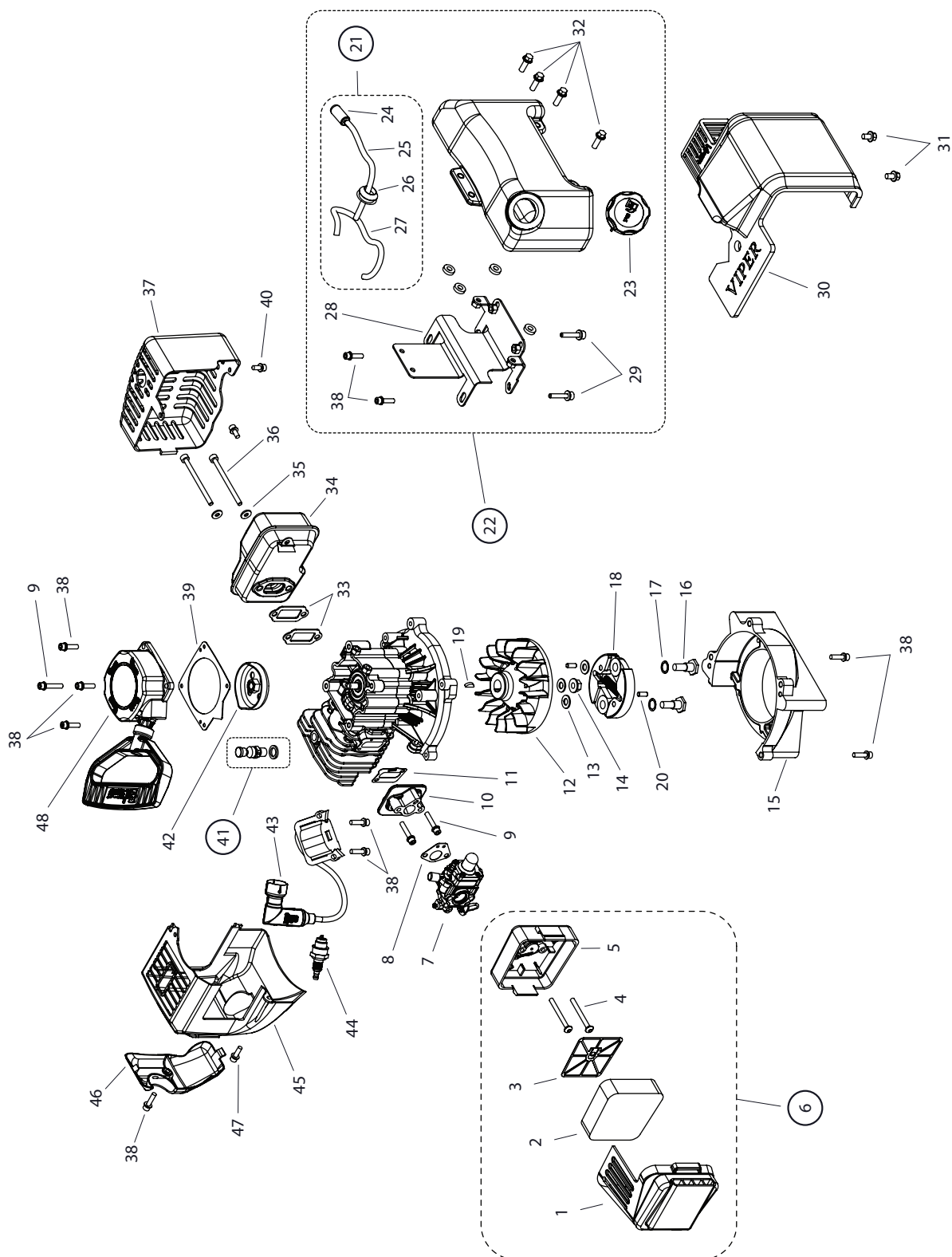
This image shows a single sheet of white paper with horizontal ruling lines. The lines are evenly spaced and run across the width of the page. There are no margins, text, or other markings on the paper.



71cc SHARK^{MC}



EXPLOSION DES PIÈCES DU MOTEUR Z71 SHARK™

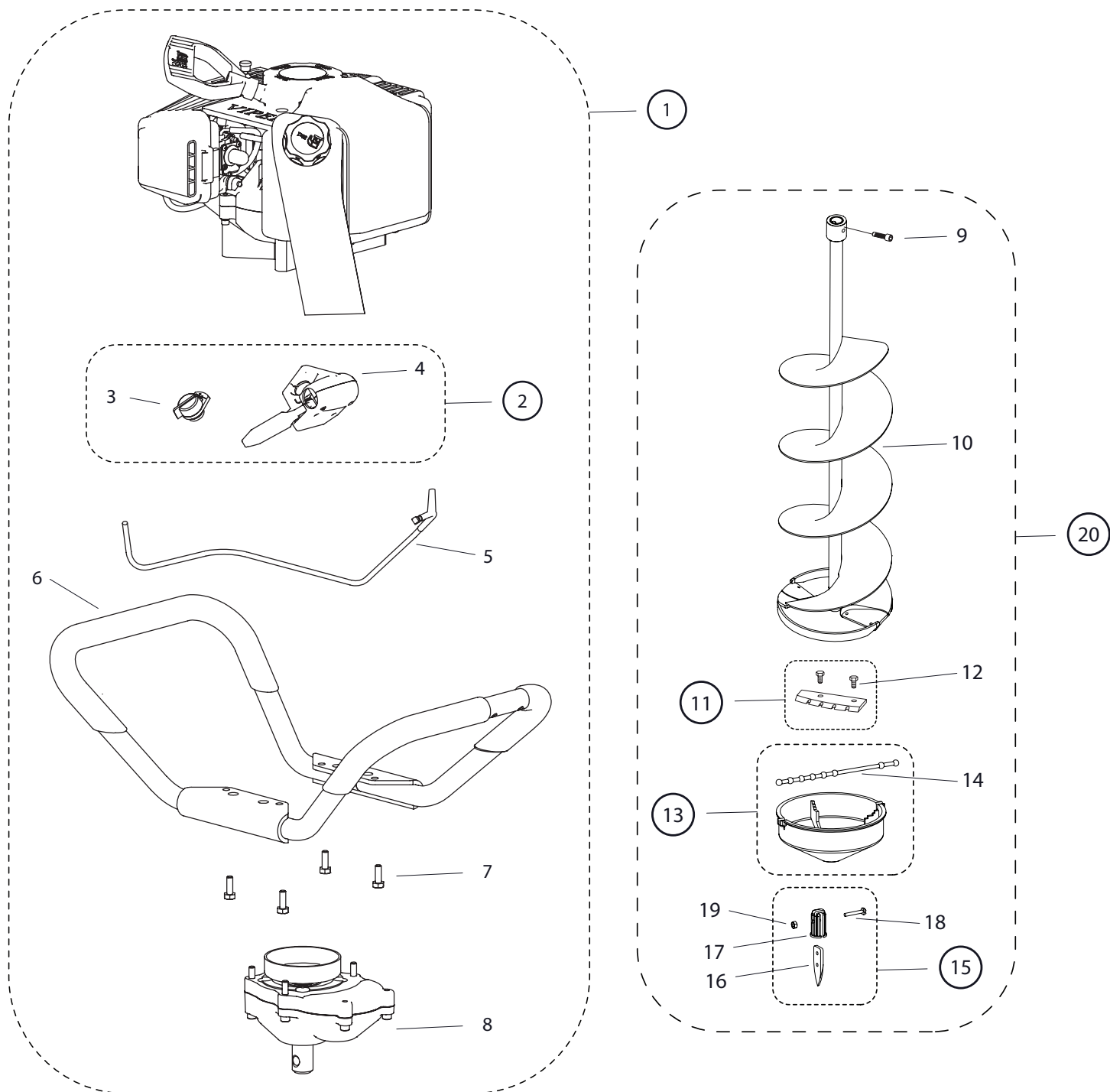


LISTE DES PIÈCES DU MOTEUR Z71 SHARK™

KEY NO.	PART NO.	DESCRIPTION	QTY.
1	3004161	COUVERCLE FILTRE À AIR PAS DE TROU DE COMMUTATEUR 2 CYCLE	1
2	3004156	ELEMENT AIR FILTER BLOC MOUSSE VIPER	1
3	3004157	RENFORT DE FILTRE À AIR DE CADRE VIPER	1
4	15209	BOULON M5X0.8X52 BSHCSSEMS GR8.8 ZN P-T	2
5	3004160	ASSEMBLAGE BASE AIR FILTER PRIMER TROU 2 CYCLE	1
6	30857	KIT ASSEMBLAGE AIR FILTER Z71	1
7	12506	CARBURATEUR 71CC 2 CYCLE VIPER	1
8	300479	JOINT CARBURATEUR 43/51/71 VIPER	1
9	17952	BOULON M5X0.8X28MM SHCSSEMS GR8.8 YLZN P-T	2
10	3004139	WINDPIPE INTAKE 71CC MOTEUR VIPER	1
11	3004138	JOINT D'ADMISSION 71CC VIPER	1
12	3004142	FLYWHEEL MAGNETO 71CC VIPER	1
13	300462	RONDELLE 15.8 X 8.4 X 1.6MM	3
14	300337	ÉCROU M8 X 1.25MM HHF	1
15	300411071	BAGUE DE MONTAGE & BOUCLIER 71CC VIPER	1
16	300450	BOULON M8 X 1.25 X 25 MM SHOULDER 10MM ZN	2
17	300449	RONDELLE M8 SPRING	2
18	300413	ASSEMBLAGE ROTOR D'EMBRAYAGE CENTRIFUGE VIPER	1
19	300338	CLÉ, VOLANT	1
20	300467	GOIJON 5MM DIA X 12MM	2
21	3004117	TROUSSE DÉFLECTEUR D'AIR	1
22	12758	TROUSSE RÉSERVOIR DE GAZ	1
23	11936	TROUSSE CAP GAZ	1
24	3004103	FILTRE CARBURANT POREUX EN ALUMINIUM PLASTIQUE	1

KEY NO.	PART NO.	DESCRIPTION	QTY.
25	300498	LIGNE DE CARBURANT COUPÉE À 10,4 POUCES	1
26	300466	RÉSERVOIR DE CARBURANT À TROUS UN TROU	1
27	300490	PRIMER LINE ICE COUPÉ À 5,4 PO	1
28	10682	SUPPORT DE RÉSERVOIR DE GAZ À ONGLETS DE SOUDURE TROIS	1
29	11169	BOULON M5 X .8 X 28 MM SHCS GR 8.8 ZN	2
30	300332	COUVRIR RÉSERVOIR	1
31	300336	BOULON M6 X 1.0 X 10 HHF YL ZN F-T	2
32	4647	BOULON M6 X 1.0 X 18 FLANGE HH GR5 ZN F-T	4
33	3004136	JOINT D'ÉTANCHÉITÉ, SILENCIEUX	2
34	3004135	SILENCIEUX 71CC VIPER	1
35	300445	RONDELLE M5 HP ENG	2
36	12502	BOULON M5 X 75MM SHCS ZN	2
37	3004134	COUVERCLE SILENCIEUX 71CC VIPER	1
38	17946	BOULON M5X0.8X20MM SHCSSEMS GR8.8 YLZN P-T	10
39	300429	PLAQUE D'ESPACEMENT RECOIL 2-CYCLE	1
40	17888	BOULON M5X0.8X12MM SHCSSEMS GR8.8 YLZN P-T	2
41	24969	KIT Z71 COMPRESSION RELIEF	1
42	300491	CUP RECOIL CLUTCH 2 CYCLE VIPER	1
43	28599	MOTEUR À BOBINE D'ALLUMAGE 71 CC VIPER ICES002	1
44	28600	BOUGIE, NGK BPMR7A	1
45	3004140	ÉPAULEMENT, MOTEUR	1
46	3004141	COUVERT, ÉPAULEMENT MOTEUR	1
47	17945	BOULON M5X0.8X16MM SHCSSEMS GR8.8 YLZN P-T	1
48	12088	ENSEMBLE LANCEUR	1

EXPLOSION DE Z71 SHARK™ POWERHEAD ET DE PIÈCES DE VIS



LISTE DES PIÈCES Z71 SHARK™

KEY NO.	PART NO.	DESCRIPTION	QTY.
1	30974	KIT POWERHEAD SHARK 71CC 2 CYCLE	1
2	30929	KIT DECLenchement DE L'ACCELERATEUR ET DE L'INTERRUPTEUR D'ARRET	1
3	28232	ALLUMER / ÉTEINDRE AVEC LES FILS F1	1
4	28226	ENSEMBLE INTERRUPTEUR	1
5	14644	GUIDON EN ACIER DE LA TARIÈRE DU CÂBLE D'ACCÉLÉRATEUR	1
6	27967	GUIDON EN ALUMINIUM PAPILLON À LA GLACE	1
7	90148	BOULON 1/4-20 X 3/4 HH GR5 BLK ZN W/PATCH	4
8	26580	ENSEMBLE DE TRANSMISSION 25:1 LUMIÈRE	1
9	8955	BOULON, SHCS 3/8-16 X 1-1/4"	1
10	228	SOUDURE AUGER 10 POUCES QUANTUM	1
11	28345	LAMES À GLACE 10 PO ESKIMO	1
12	176	BOULON M5 X 0.8 X 10 SFH GR8.8 YL ZN	4
13	233A	KIT DE PROTECTION DE LAME 10 PO	1
14	8651	CAOUTCHOUC LA SANGLE	1
15	90129	REPLACEMENT ICE POINT SAUF 9 EN TURBO	1
16	90166	POINT	1
17	90165	TITULAIRE, POINT	1
18	90136	BOULON, HH 10-24 X 1-1/4" STAINLESS	1
19	53606	ÉCROU, HEX NYLOC 10-24	1
20	QT10N	ICE AUGER 10 POUCES QUANTUM ROUGE	1



Eskimo®, Division of Ardisam, Inc.
1160 8th Avenue, PO Box 666
Cumberland, WI 54829
800-345-6007 | Fax/Télécopie 715-822-2223
E-mail/Courriel: info@geteskimo.com

All weights, specifications and features are approximate and are subject to change without notice. Due to continuous product improvements, product images may not be exact. Items used for props not included. Some assembly may be required.

Tous les poids, dimensions et caractéristiques indiqués sont approximatifs et sujets à modification sans préavis. En raison des constantes améliorations de nos produits, les représentations du produit peuvent être inexactes. Articles utilisés en tant qu'accessoires non compris. Un certain assemblage peut être requis.
