

Groundbreaking Power Equipment

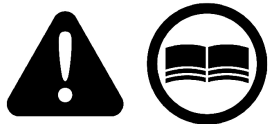
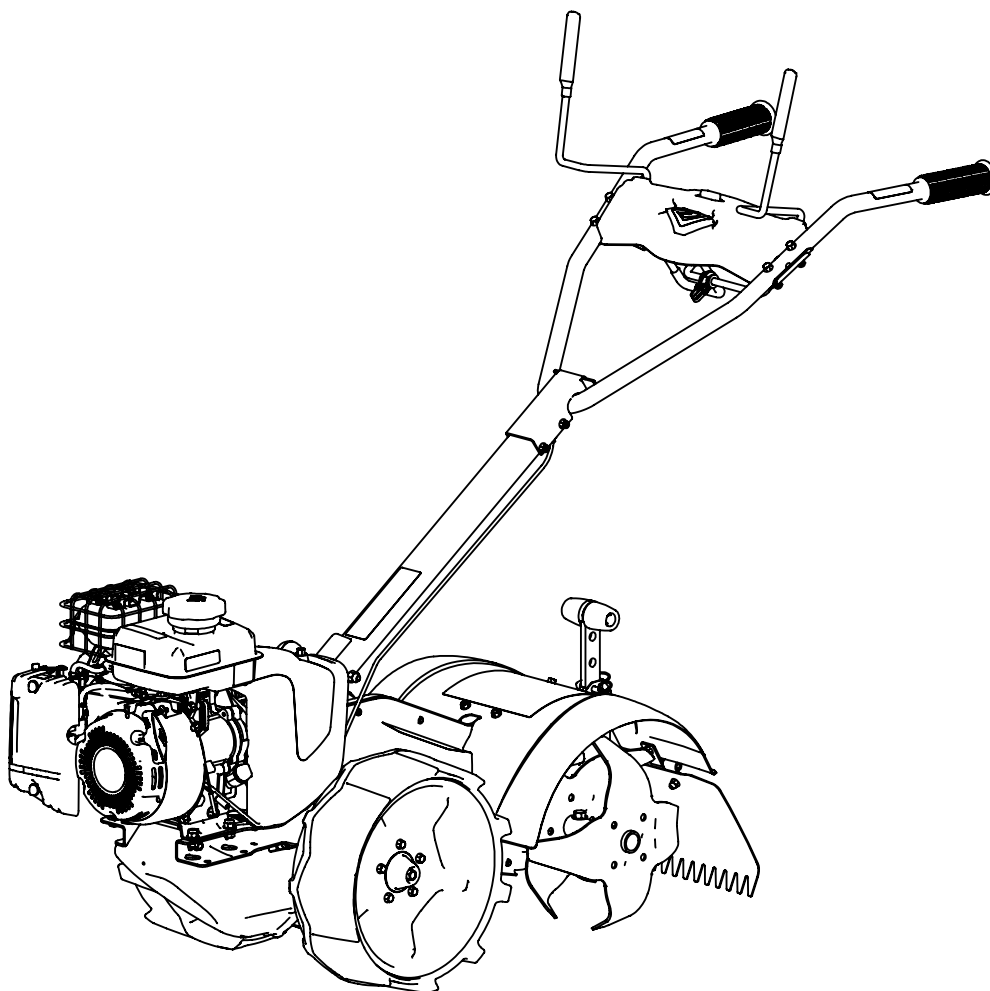
Illustrated Parts Breakdown
Illustration des pièces détachées

**Model Number,
Numéros de modèle :**
31285

ENGLISH

FRANÇAIS

S/N

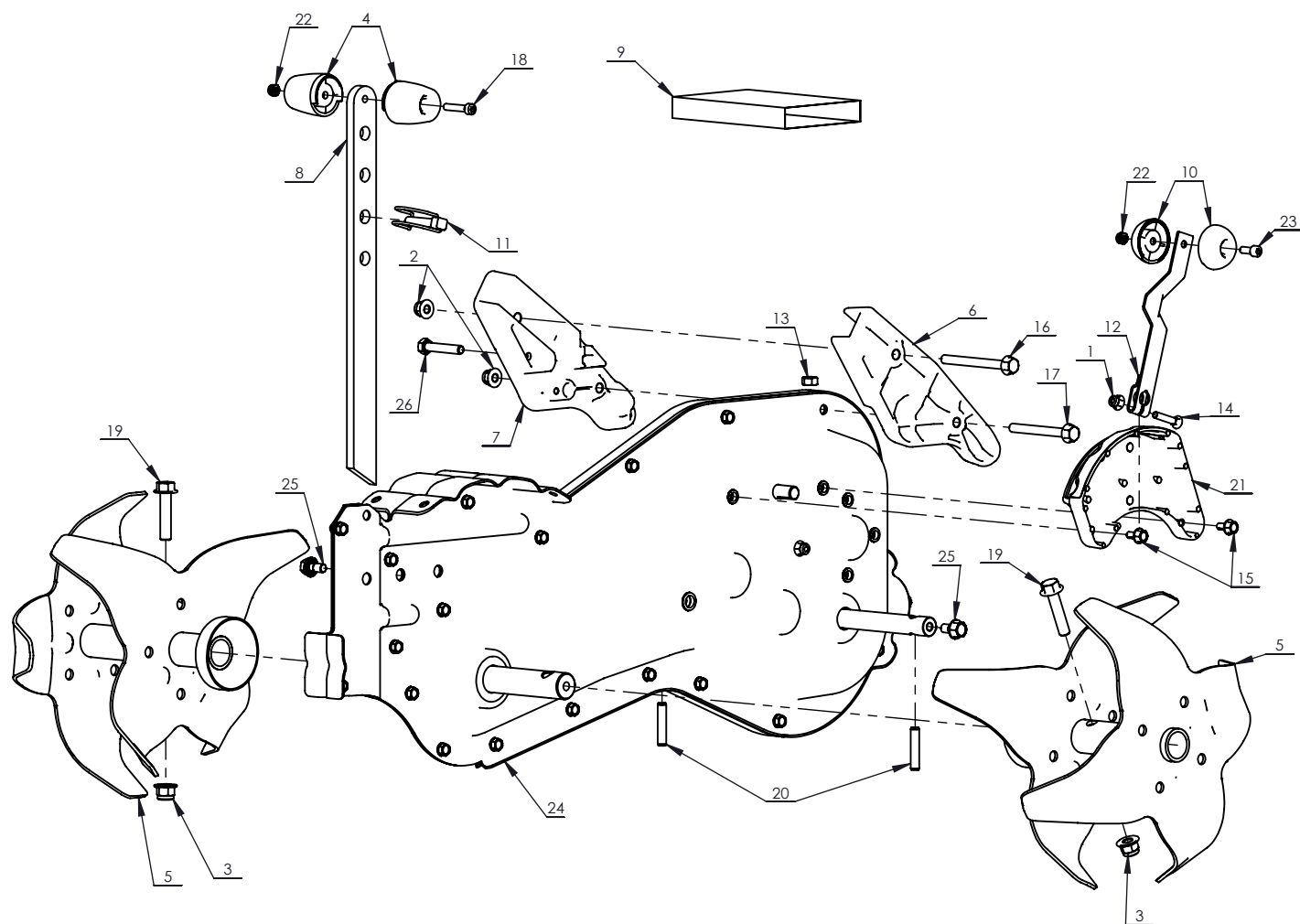


www.getearthquake.com - (800) 345-6007

© 2022 Ardisam, Inc.
All Rights Reserved
Tous droits réservés
P/N: 41867
SVC: 05604
ECN: 13688
REV 1: 2022-04-12

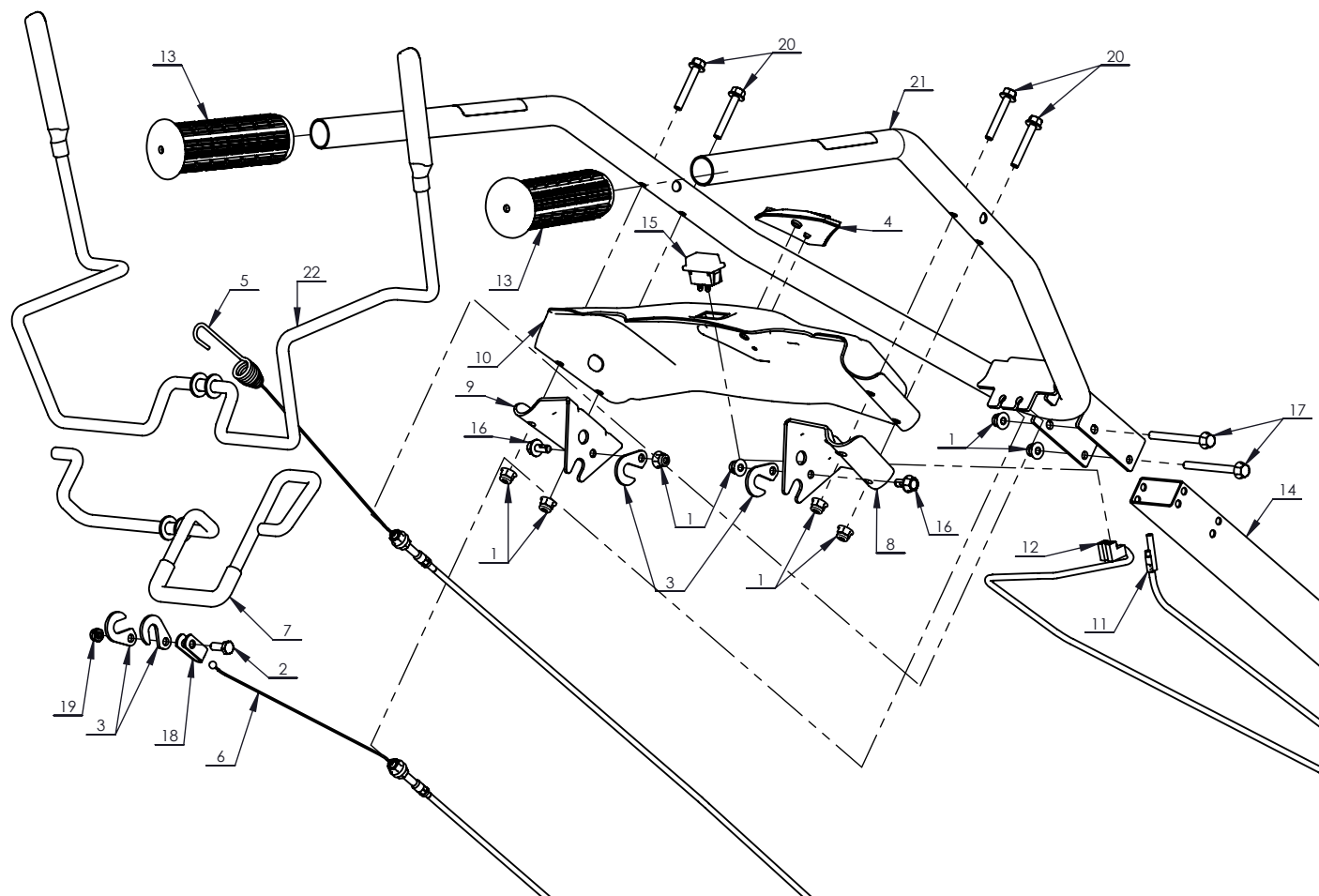


THIS INSTRUCTION BOOKLET CONTAINS IMPORTANT SAFETY INFORMATION. PLEASE READ AND KEEP FOR FUTURE REFERENCE.
CE LIVRET D'INSTRUCTIONS CONTIENT DES INFORMATIONS IMPORTANTES SUR LA SÉCURITÉ. VEUILLEZ LE LIRE ET LE CONSERVER POUR TOUTE CONSULTATION EXTÉRIEURE.



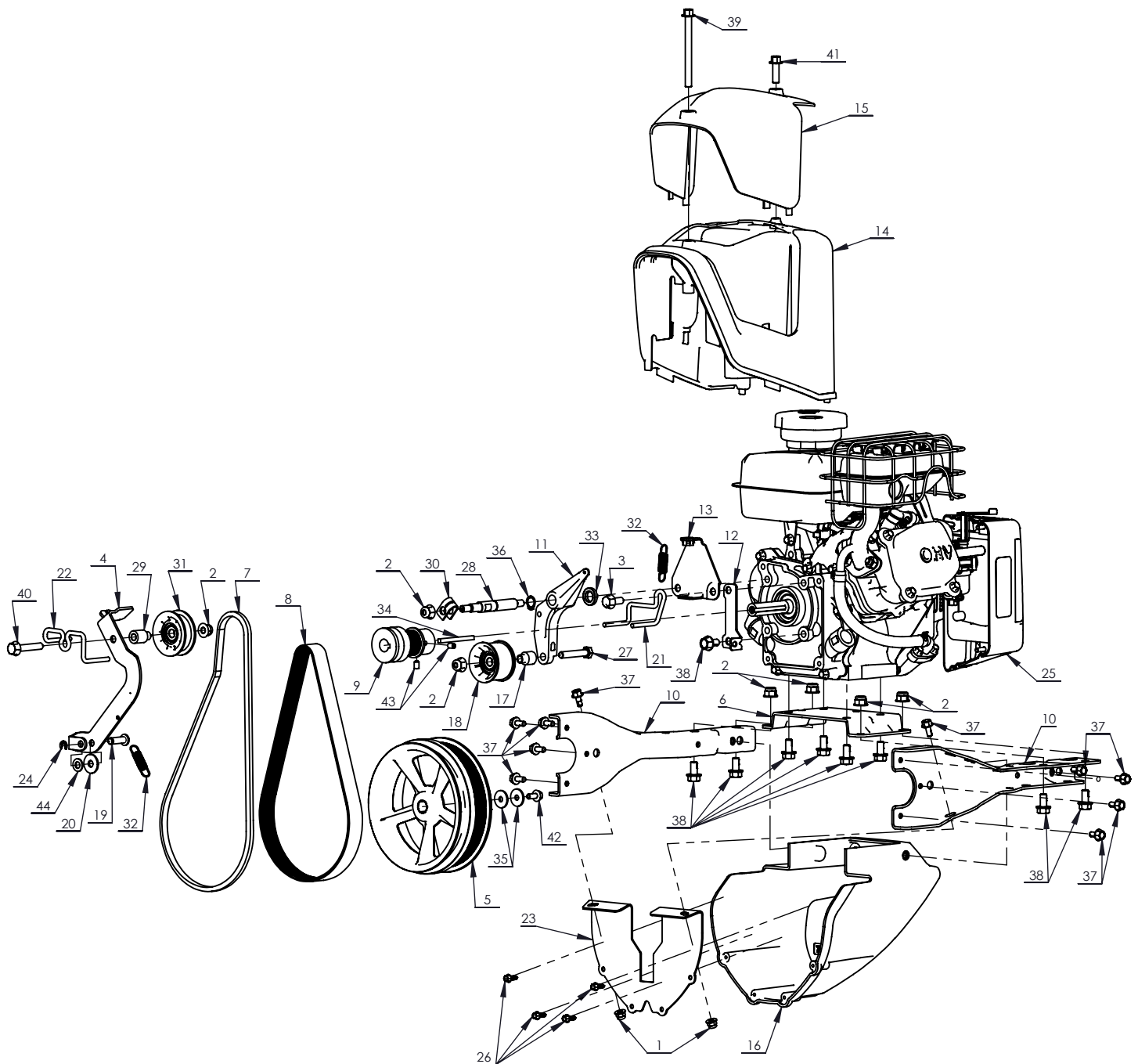
| REF./ REP. | PART NO. /° RÉF. | DESCRIPTION | QTY. /QTÉ |
|---------------|---------------------|----------------------------|--------------|
| 1 | 14109 | FLANGE LOCK NUT M6X1.0 | 1 |
| 2 | 16400 | FLANGE LOCK NUT M8X1.25 | 2 |
| 3 | 16903 | FLANGE LOCK NUT M10X1.5 | 2 |
| 4 | 28210 | DRAG STAKE HANDLE GREEN | 2 |
| 5 | 31122 | TINE GREY | 2 |
| 6 | 31143 | HANDLEBAR MOUNT RIGHT RED | 1 |
| 7 | 31144 | HANDLEBAR MOUNT LEFT RED | 1 |
| 8 | 31227 | DRAG STAKE BLACK | 1 |
| 9 | 31414 | HARDWARE PARTS BAG | 1 |
| 10 | 31495 | SHIFTER LEVER HANDLE GREEN | 2 |
| 11 | 31563 | LOCK PIN M8 | 1 |
| 12 | 31626 | SHIFTER ARM | 1 |
| 13 | 3252 | NUT M8X1.25 | 1 |
| 14 | 34028 | CARRIAGE BOLT M6X1.0X30 MM | 1 |

| REF./ REP. | PART NO. /° RÉF. | DESCRIPTION | QTY. /QTÉ |
|---------------|---------------------|-------------------------------|--------------|
| 15 | 34141 | FLANGE BOLT M6X1.0X14 MM | 2 |
| 16 | 34143 | FLANGE BOLT M8X1.25X85 MM | 1 |
| 17 | 34144 | FLANGE BOLT M8X1.25X75 MM | 1 |
| 18 | 34588 | SOCKET HEAD BOLT M6X1.0X30 MM | 1 |
| 19 | 35182 | FLANGE BOLT M10X1.5X45 MM | 2 |
| 20 | 35207 | DOWEL PIN 8X40 MM | 2 |
| 21 | 36223 | SHIFT BRACKET LABELED | 1 |
| 22 | 37433 | LOCK NUT M6X1.0 | 2 |
| 23 | 37467 | SOCKET HEAD BOLT M6X1.0X16 MM | 1 |
| 24 | 39978 | ASSY DDT TRANSMISSION SERVICE | 1 |
| 25 | 41001 | FLANGE BOLT M8X1.25X16 MM | 2 |
| 26 | 800100 | BOLT M8X1.25X45 MM | 1 |

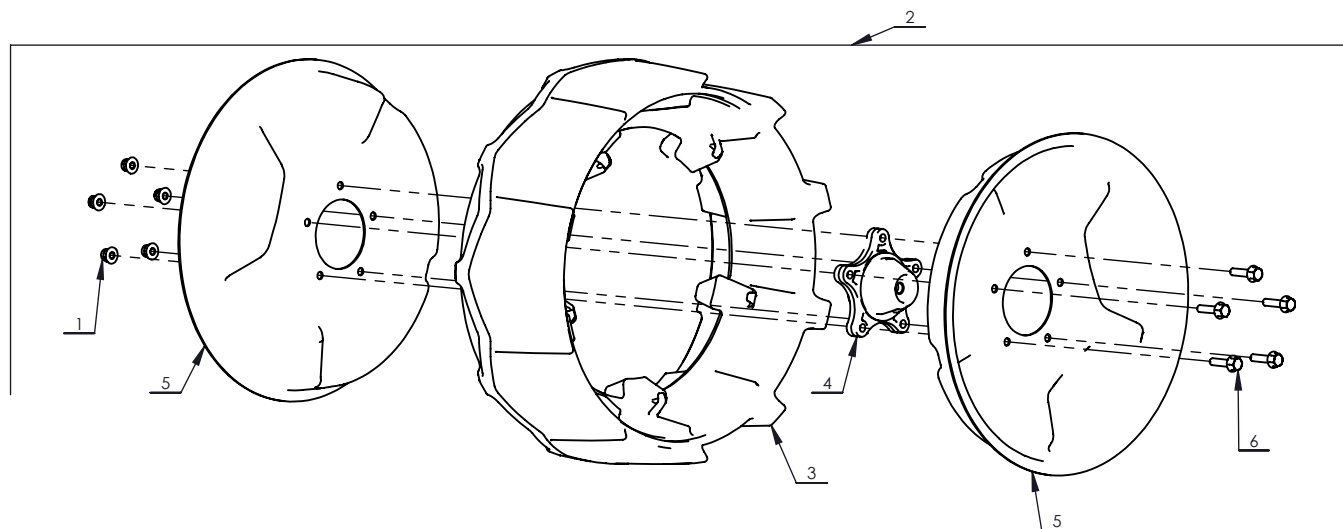


| REF./ REP. | PART NO. /° RÉF. | DESCRIPTION | QTY. /QTÉ |
|---------------|---------------------|------------------------------------|--------------|
| 1 | 14109 | FLANGE LOCK NUT M6X1.0 | 8 |
| 2 | 17986 | BOLT M6X1.0X16 MM | 1 |
| 3 | 30924 | HOOK WASHER BLACK | 4 |
| 4 | 30995 | BADGE | 1 |
| 5 | 31244 | FORWARD CABLE | 1 |
| 6 | 31245 | REVERSE CABLE | 1 |
| 7 | 31666 | REVERSE BAIL | 1 |
| 8 | 31667 | BRACKET RIGHT BLACK | 1 |
| 9 | 31668 | BRACKET LEFT BLACK | 1 |
| 10 | 31672 | DASH RED | 1 |
| 11 | 31780 | WIRING HARNESS ENGINE TO HANDLEBAR | 1 |

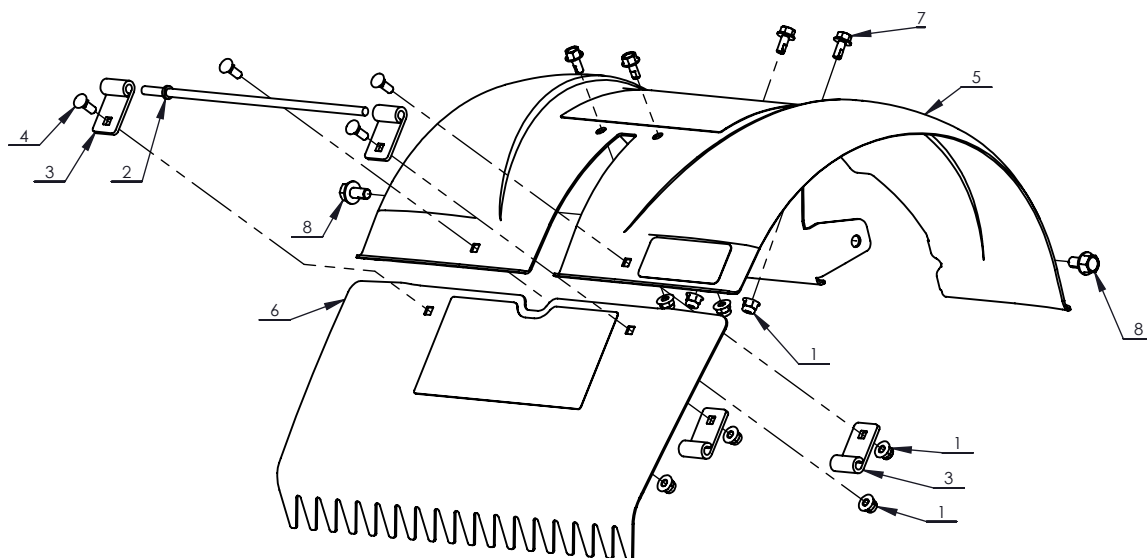
| REF./ REP. | PART NO. /° RÉF. | DESCRIPTION | QTY. /QTÉ |
|---------------|---------------------|------------------------------------|--------------|
| 12 | 31784 | WIRING HARNESS HANDLEBAR TO SWITCH | 1 |
| 13 | 32430 | GRIP BLACK | 2 |
| 14 | 32997 | TUBE BLACK LABELED | 1 |
| 15 | 33427 | ROCKER SWITCH WITH COVER | 1 |
| 16 | 34141 | FLANGE BOLT M6X1.0X14 MM | 2 |
| 17 | 34145 | FLANGE BOLT M6X1.0X65 MM | 2 |
| 18 | 35556 | YOKE | 1 |
| 19 | 37433 | LOCK NUT M6X1.0 | 1 |
| 20 | 400021 | FLANGE BOLT M6X1.0X40 MM | 4 |
| 21 | 40070 | HANDLEBAR BLACK LABELED | 1 |
| 22 | 40241 | FORWARD BAIL | 1 |



| REF./ REP. | PART NO. /° RÉF. | DESCRIPTION | QTY. /QTÉ |
|---------------|---------------------|---------------------------|--------------|
| 1 | 14109 | FLANGE LOCK NUT M6X1.0 | 2 |
| 2 | 16400 | FLANGE LOCK NUT M8X1.25 | 7 |
| 3 | 19945 | FLANGE BOLT M8X1.25X20 MM | 1 |
| 4 | 31121 | REVERSE ARM | 1 |
| 5 | 31131 | TRANSMISSION PULLEY | 1 |
| 6 | 31142 | ENGINE PLATE | 1 |
| 7 | 31157 | BELT V 3L864 | 1 |
| 8 | 31158 | BELT POLY-V 295J10 | 1 |
| 9 | 31160 | ENGINE PULLEY | 1 |
| 10 | 31163 | ENGINE MOUNT ARM | 2 |
| 11 | 31175 | FORWARD ARM | 1 |
| 12 | 31176 | FORWARD CABLE BRACKET | 1 |
| 13 | 31415 | SHROUD BRACKET | 1 |
| 14 | 31695 | UPPER SHROUD BLACK | 1 |
| 15 | 31696 | UPPER SHROUD RED | 1 |
| 16 | 31711 | LOWER SHROUD BLACK | 1 |
| 17 | 31753 | BUSHING FORWARD PULLEY | 1 |
| 18 | 31755 | FORWARD PULLEY | 1 |
| 19 | 32201 | CLEVIS PIN | 1 |
| 20 | 3245 | WASHER M8X24 MM | 1 |
| 21 | 32633 | BELT GUIDE FORWARD | 1 |
| 22 | 32658 | BELT GUIDE REVERSE | 1 |
| 23 | 32662 | PLATE LOWER SHROUD BLACK | 1 |
| 24 | 32952 | E-CLIP 6MM | 1 |
| 25 | 33000 | ENGINE 99CC 4 CYCLE | 1 |
| 26 | 33008 | FLANGE SCREW ST4.8X16 MM | 4 |
| 27 | 3316 | BOLT M8X1.25X45 MM | 1 |
| 28 | 33333 | FORWARD ARM STUD | 1 |
| 29 | 33334 | BUSHING REVERSE PULLEY | 1 |
| 30 | 33363 | YOKE | 1 |
| 31 | 33422 | REVERSE PULLEY | 1 |
| 32 | 33424 | SPRING | 2 |
| 33 | 33602 | SPACER FORWARD ARM | 1 |
| 34 | 33607 | KEY 3/16 IN | 1 |
| 35 | 33608 | WASHER M6X22 MM | 2 |
| 36 | 33609 | SNAP RING 13MM | 1 |
| 37 | 34141 | FLANGE BOLT M6X1.0X14 MM | 10 |
| 38 | 34142 | FLANGE BOLT M8X1.25X16 MM | 9 |
| 39 | 34146 | FLANGE BOLT M8X1.25X90 MM | 1 |
| 40 | 35226 | FLANGE BOLT M8X1.25X45 MM | 1 |
| 41 | 35893 | FLANGE BOLT M8X1.25X25 MM | 1 |
| 42 | 36054 | FLANGE BOLT M6X1.0X14 MM | 1 |
| 43 | 36492 | SET SCREW M6X1.0X10 MM | 2 |
| 44 | 400024 | WASHER M8X16 MM | 1 |



| REF./ REP. | PART NO. /° RÉF. | DESCRIPTION | QTY. /QTÉ |
|---------------|---------------------|--------------------------|--------------|
| 1 | 14109 | FLANGE LOCK NUT M6X1.0 | 5 |
| 2 | 27237 | WHEEL ASSEMBLY | 2 |
| 3 | 27540 | TIRE | 1 |
| 4 | 27541 | HUB | 1 |
| 5 | 27542 | RIM | 2 |
| 6 | 35196 | FLANGE BOLT M6X1.0X25 MM | 5 |

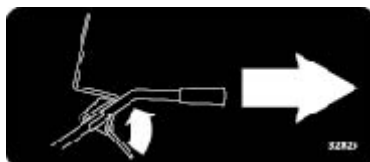


| REF./ REP. | PART NO. /° RÉF. | DESCRIPTION | QTY. /QTÉ |
|---------------|---------------------|----------------------------|--------------|
| 1 | 14109 | FLANGE LOCK NUT M6X1.0 | 8 |
| 2 | 24869 | HINGE ROD | 1 |
| 3 | 32427 | HINGE BRACKET | 4 |
| 4 | 32429 | CARRIAGE BOLT M6X1.0X16 MM | 4 |

| REF./ REP. | PART NO. /° RÉF. | DESCRIPTION | QTY. /QTÉ |
|---------------|---------------------|---------------------------|--------------|
| 5 | 32998 | TINE SHIELD RED LABELED | 1 |
| 6 | 32999 | SHIELD FLAP RED LABELED | 1 |
| 7 | 34141 | FLANGE BOLT M6X1.0X14 MM | 4 |
| 8 | 34142 | FLANGE BOLT M8X1.25X16 MM | 2 |



17918



32825



32824



32828



32827



35198



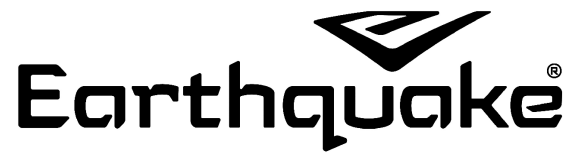
32829



32826



32823



GROUNDBREAKING POWER EQUIPMENT

1730 Industrial Avenue
PO Box 666
Cumberland, WI 54829

Phone, Téléphone: (800) 345-6007
Fax, Télécopieur: (715) 822-2124
www.getearthquake.com