

Groundbreaking Power Equipment

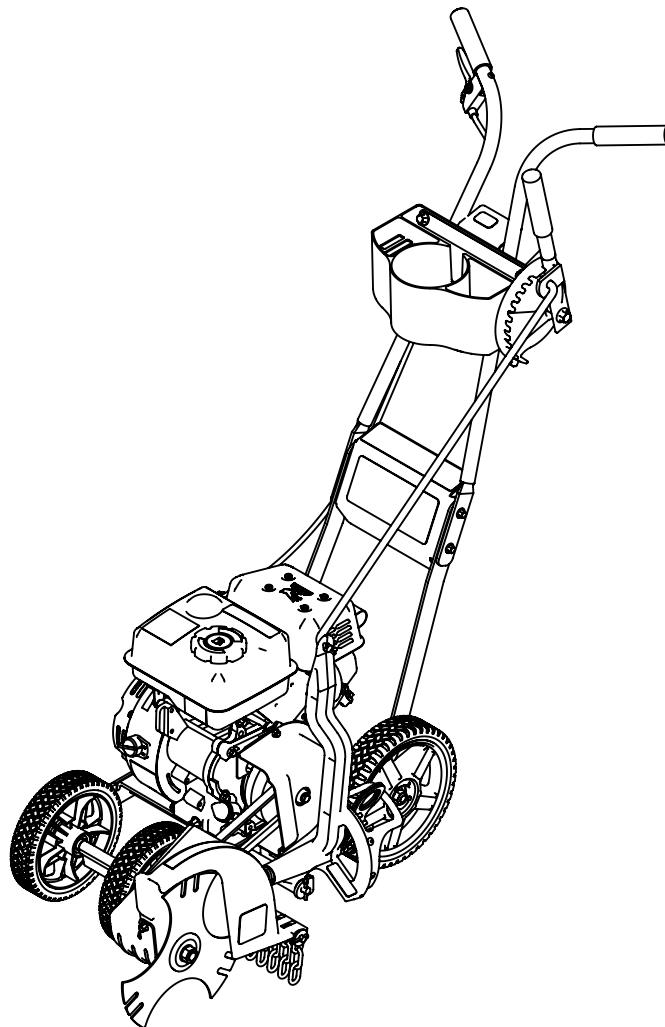
Illustrated Parts Breakdown
Illustration des pièces détachées

**Model Number,
Numéros de modèle :**
41273

ENGLISH

FRANÇAIS

S/N

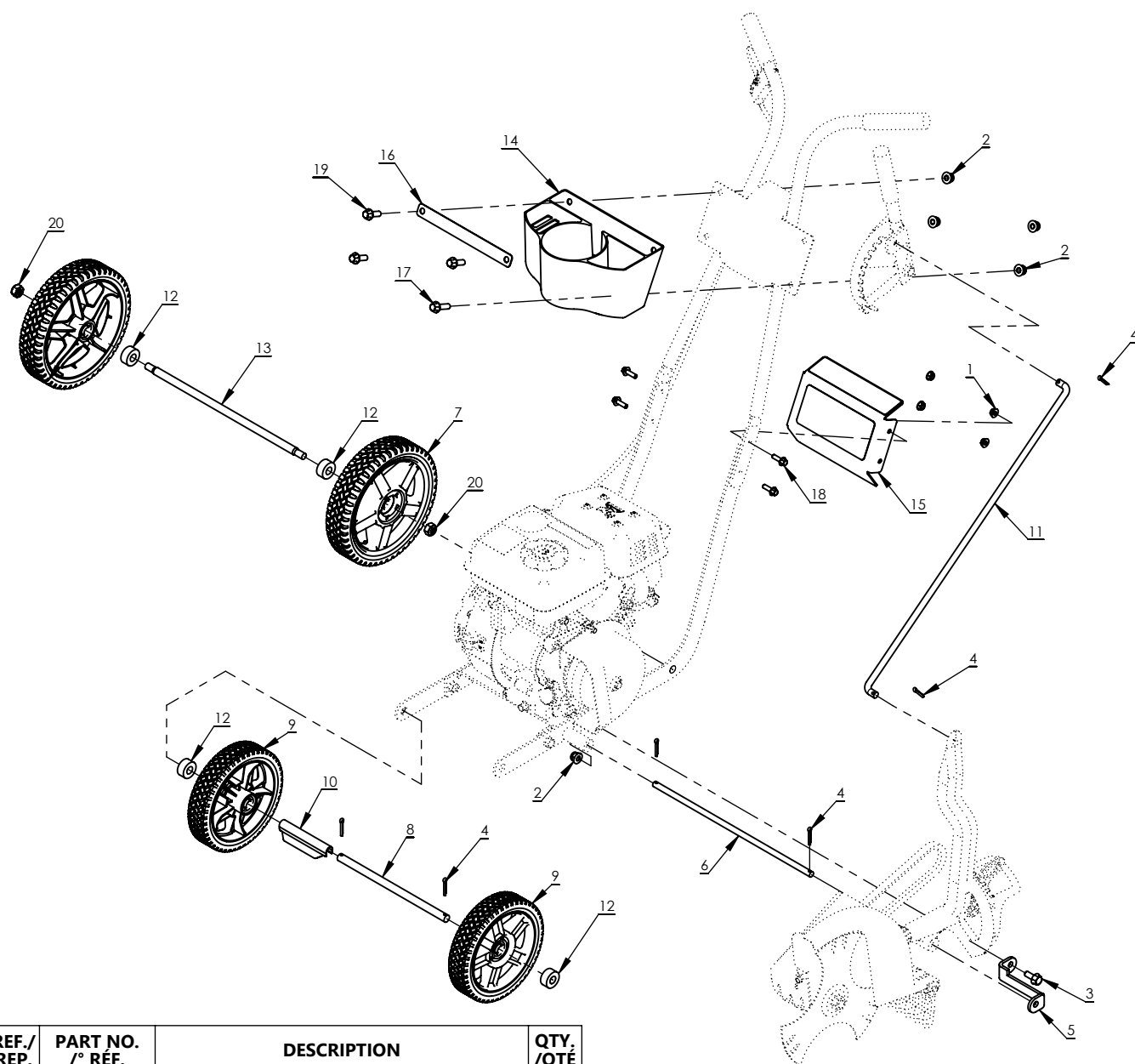


www.getearthquake.com - (800) 345-6007

© 2022 Ardisam, Inc.
All Rights Reserved
Tous droits réservés
P/N: 41279
SVC: 05607
ECN: 14005
REV 2: 06/07/2022

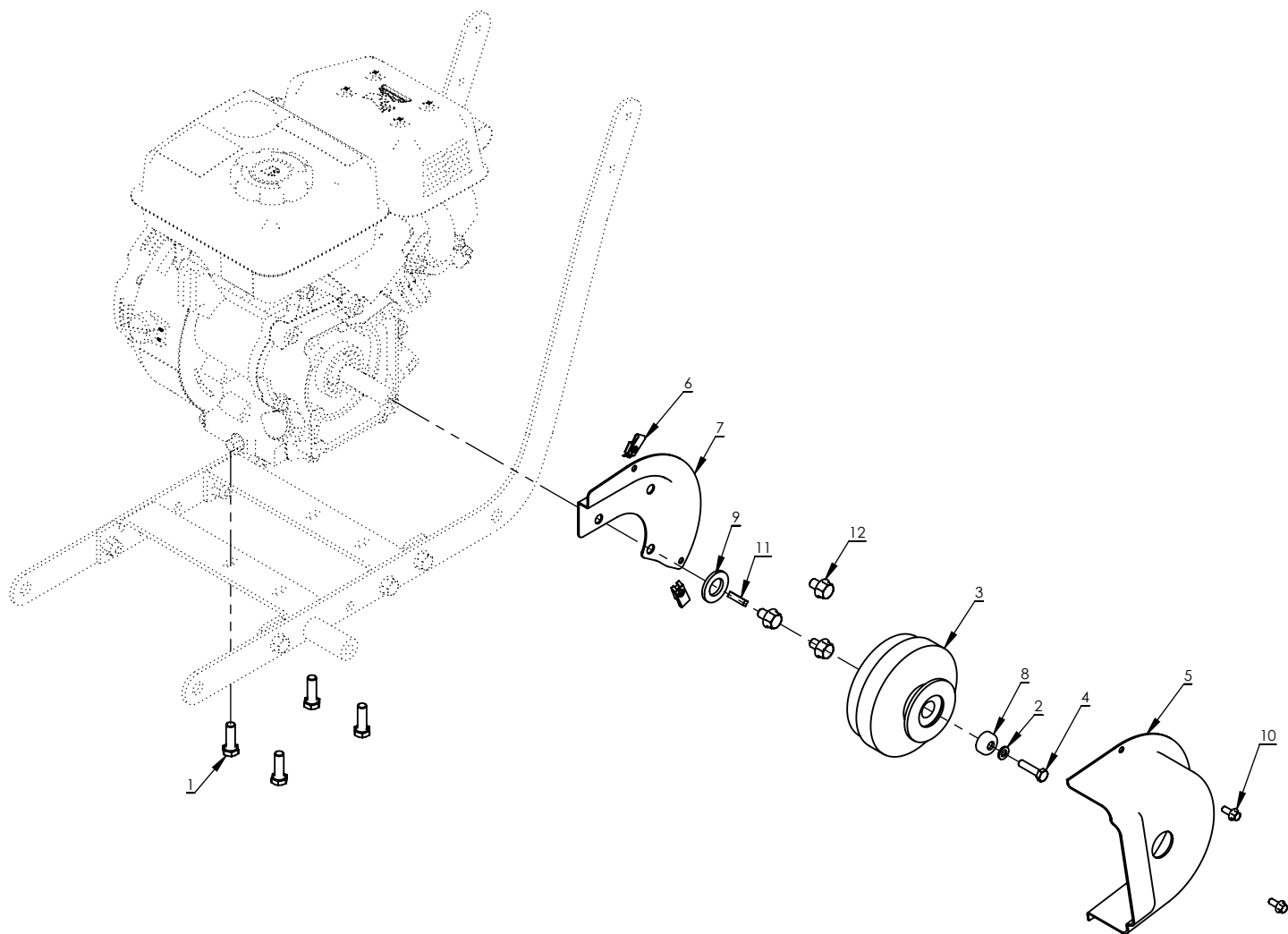


THIS INSTRUCTION BOOKLET CONTAINS IMPORTANT SAFETY INFORMATION. PLEASE READ AND KEEP FOR FUTURE REFERENCE.
CE LIVRET D'INSTRUCTIONS CONTIENT DES INFORMATIONS IMPORTANTES SUR LA SÉCURITÉ. VEUILLEZ LE LIRE ET LE CONSERVER POUR TOUTE CONSULTATION EXTÉRIEURE.

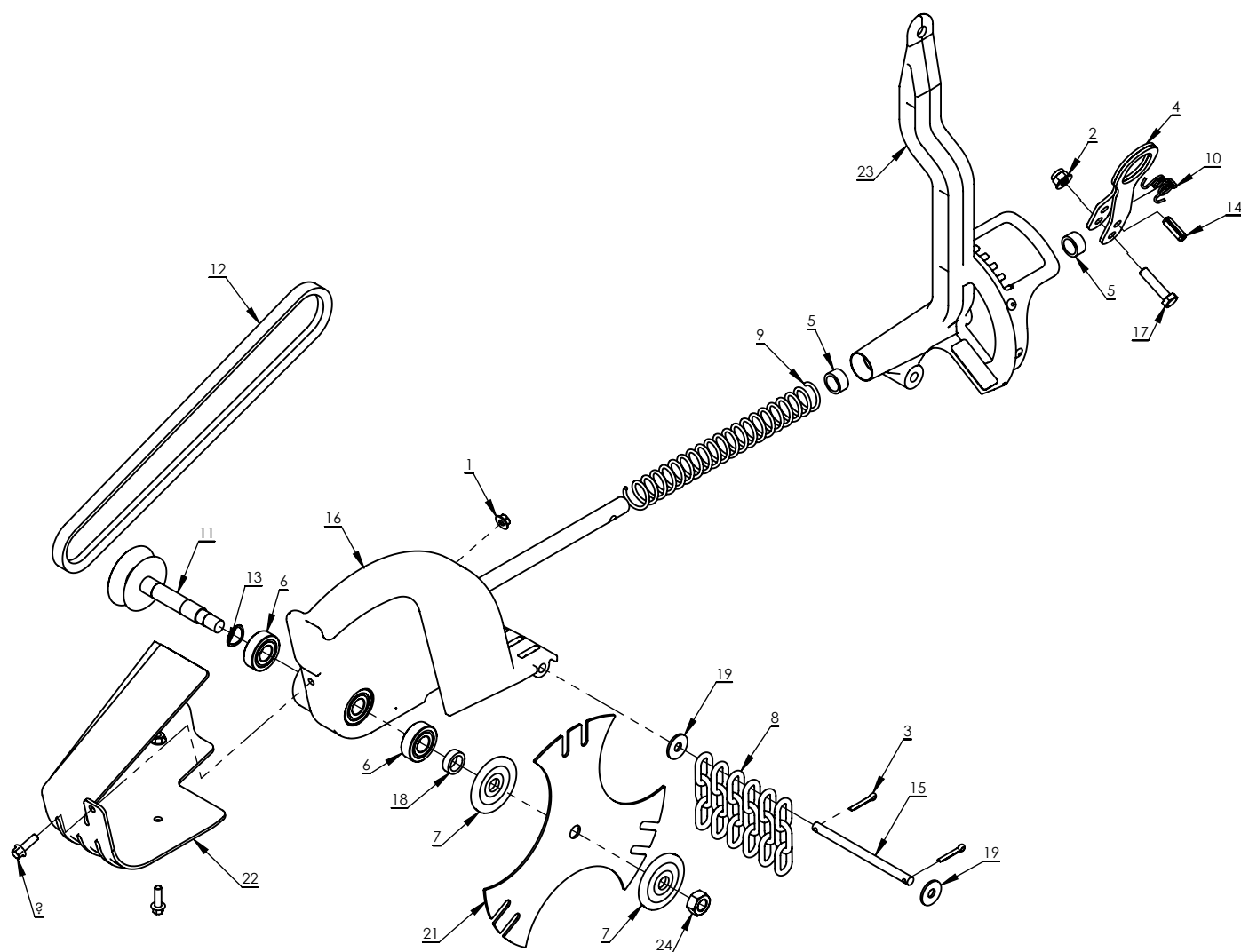


REF./ REP.	PART NO. /° RÉF.	DESCRIPTION	QTY. /QTÉ
1	14109	NUT M6	4
2	16400	NUT M8	5
3	19945	BOLT M8 X 20	1
4	22097	COTTER PIN 4MM	6
5	23229	S BRACKET	1
6	23233	PIVOT ROD	1
7	23234	WHEEL 205 MM WITH BEARINGS	2
8	23239	FRONT AXLE	1
9	23240	WHEEL 175 MM WITH BEARINGS	2
10	23254	REMOVABLE SPACER	1
11	23260	CONTROL ROD	1
12	23266	SPACER	4
13	23808	REAR AXLE	1

REF./ REP.	PART NO. /° RÉF.	DESCRIPTION	QTY. /QTÉ
14	24769	TOOL HOLDER	1
15	25580	PANEL WITH DECALS	1
16	26930	STRAP	1
17	3244	BOLT M8 X 30	1
18	34551	BOLT M6 X 20	4
19	64617	BOLT M8 X 25	3
20	W1265V0903	NUT M10	2

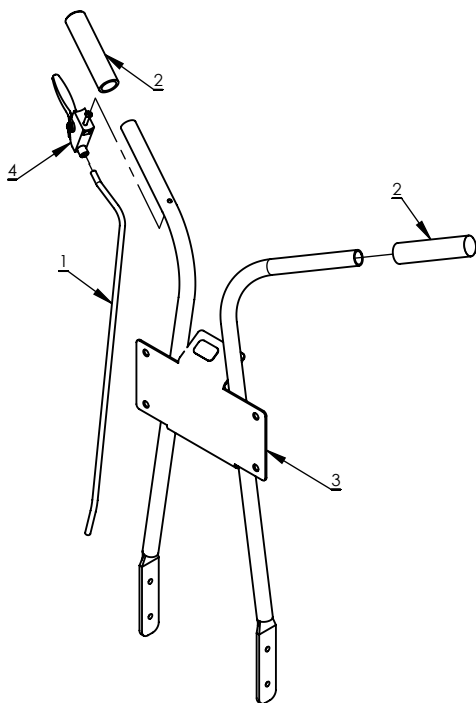


REF./ REP.	PART NO. /° RÉF.	DESCRIPTION	QTY. /QTÉ
1	13826	BOLT M8 X 25	4
2	20141	WASHER M6	1
3	23487	CLUTCH	1
4	23511	BOLT M6 X 25	1
5	23645	BELT GUARD OUTER	1
6	23873	CAGE NUT M5	2
7	23989	BELT GUARD INNER	1
8	26439	SPACER	1
9	36941	WASHER M16	1
10	400018	BOLT M5 X 12	2
11	4352	KEY 3/16	1
12	4711	BOLT M8 X 12	3

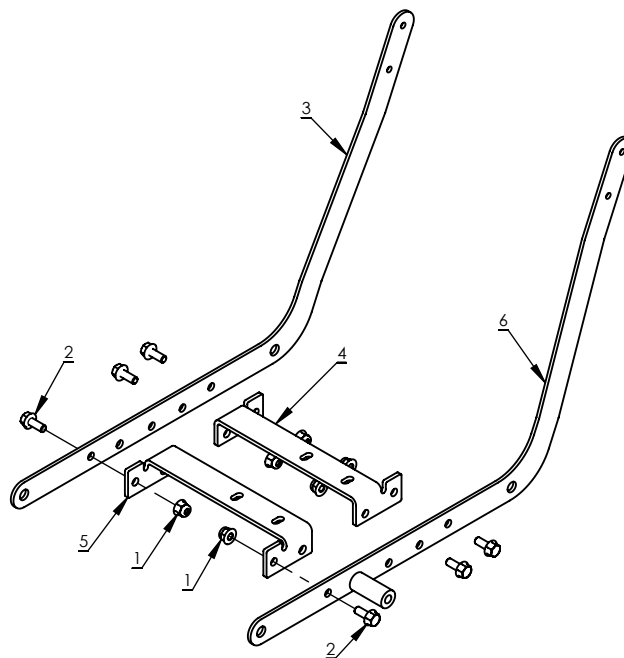


REF./ REP.	PART NO. /° RÉF.	DESCRIPTION	QTY. /QTÉ
1	14109	NUT M6	2
2	16400	NUT M8	1
3	22097	COTTER PIN 4MM	2
4	23230	ANGLE ADJUSTMENT ARM	1
5	23232	BUSHING	2
6	23244	BEARING	2
7	23263	CLAMP WASHER	2
8	23265	CHAIN	6
9	23269	SPRING	1
10	23270	SPRING	1
11	24001	BLADE SHAFT	1
12	24021	BELT	1

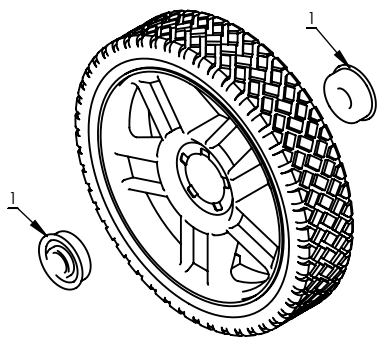
REF./ REP.	PART NO. /° RÉF.	DESCRIPTION	QTY. /QTÉ
13	24148	WAVE WASHER	1
14	24170	ROLL PIN M8	1
15	24836	CHAIN ROD	1
16	25363	HEAD WITH BEARINGS AND DECALS	1
17	26961	BOLT M8 X 35	1
18	27335	SPACER	1
19	3245	WASHER M8	2
20	40519	BOLT M6 X 20	2
21	41119	BLADE	1
22	41275	BELT GUARD	1
23	41655	BLADE ARM WITH BUSHINGS AND DECALS	1
24	42151	NUT M12	1



REF./ REP.	PART NO. /° RÉF.	DESCRIPTION	QTY. /QTÉ
1	23245	THROTTLE CABLE	1
2	23261	GRIP	2
3	25712	HANDLEBAR WITH DECAL	1
4	26771	THROTTLE TRIGGER ASSEMBLY	1

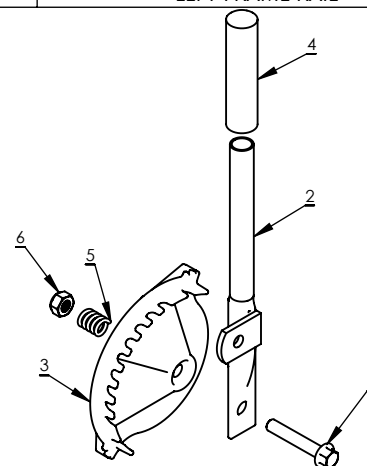


REF./ REP.	PART NO. /° RÉF.	DESCRIPTION	QTY. /QTÉ
1	16400	NUT M8	6
2	19945	BOLT M8 X 20	6
3	23249	RIGHT FRAME RAIL	1
4	23251	REAR ENGINE MOUNT	1
5	23252	FRONT ENGINE MOUNT	1
6	24030	LEFT FRAME RAIL	1



FRONT OR REAR WHEEL

REF./ REP.	PART NO. /° RÉF.	DESCRIPTION	QTY. /QTÉ
1	23235	BEARING	2



REF./ REP.	PART NO. /° RÉF.	DESCRIPTION	QTY. /QTÉ
1	19927	BOLT M10 X 60	1
2	23246	HANDLE	1
3	23259	HEIGHT SELECTOR	1
4	23261	GRIP	1
5	23268	SPRING	1
6	W1265V0903	NUT M10	1



GROUNDBREAKING POWER EQUIPMENT

1730 Industrial Avenue
PO Box 666
Cumberland, WI 54829

Phone, Téléphone: (800) 345-6007
Fax, Télécopieur: (715) 822-2124
www.getearthquake.com