

Groundbreaking Power Equipment

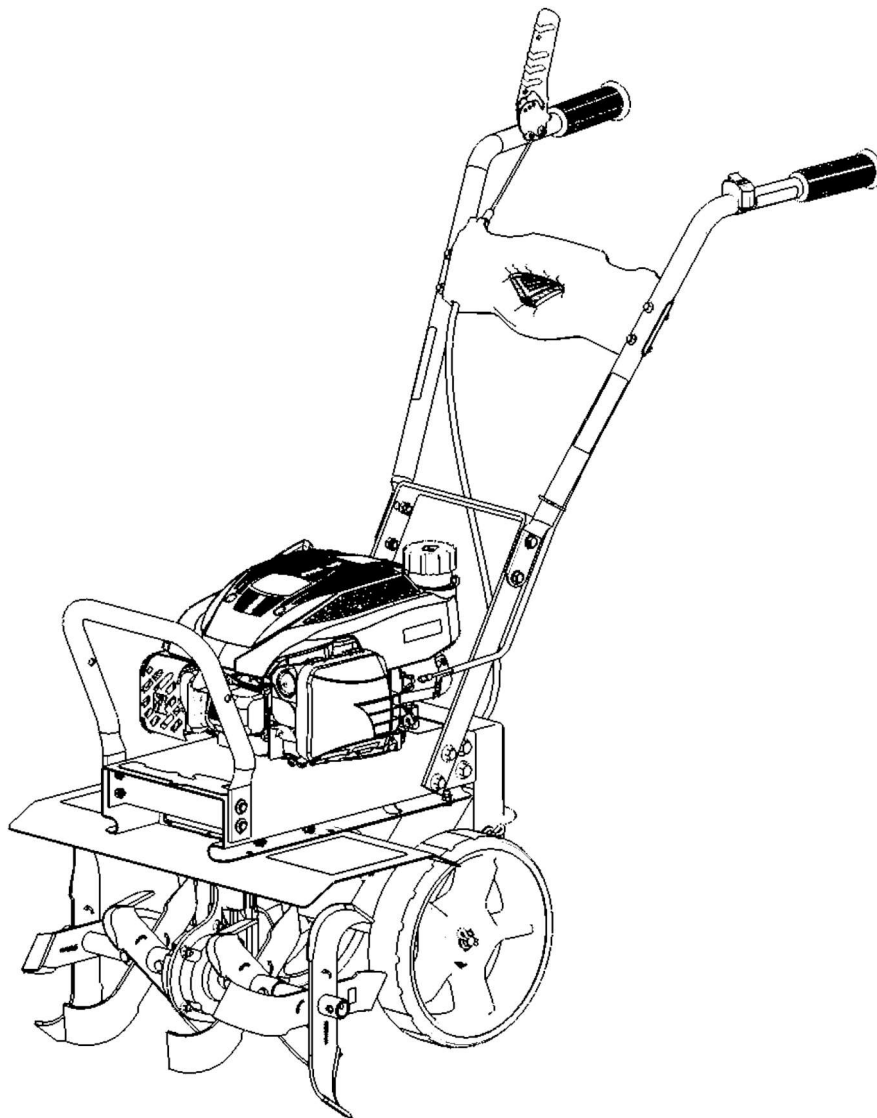
Illustrated Parts Breakdown  
Illustration des pièces détachées

**Model Number,  
Numéros de modèle :  
41080**

ENGLISH

FRANÇAIS

S/N



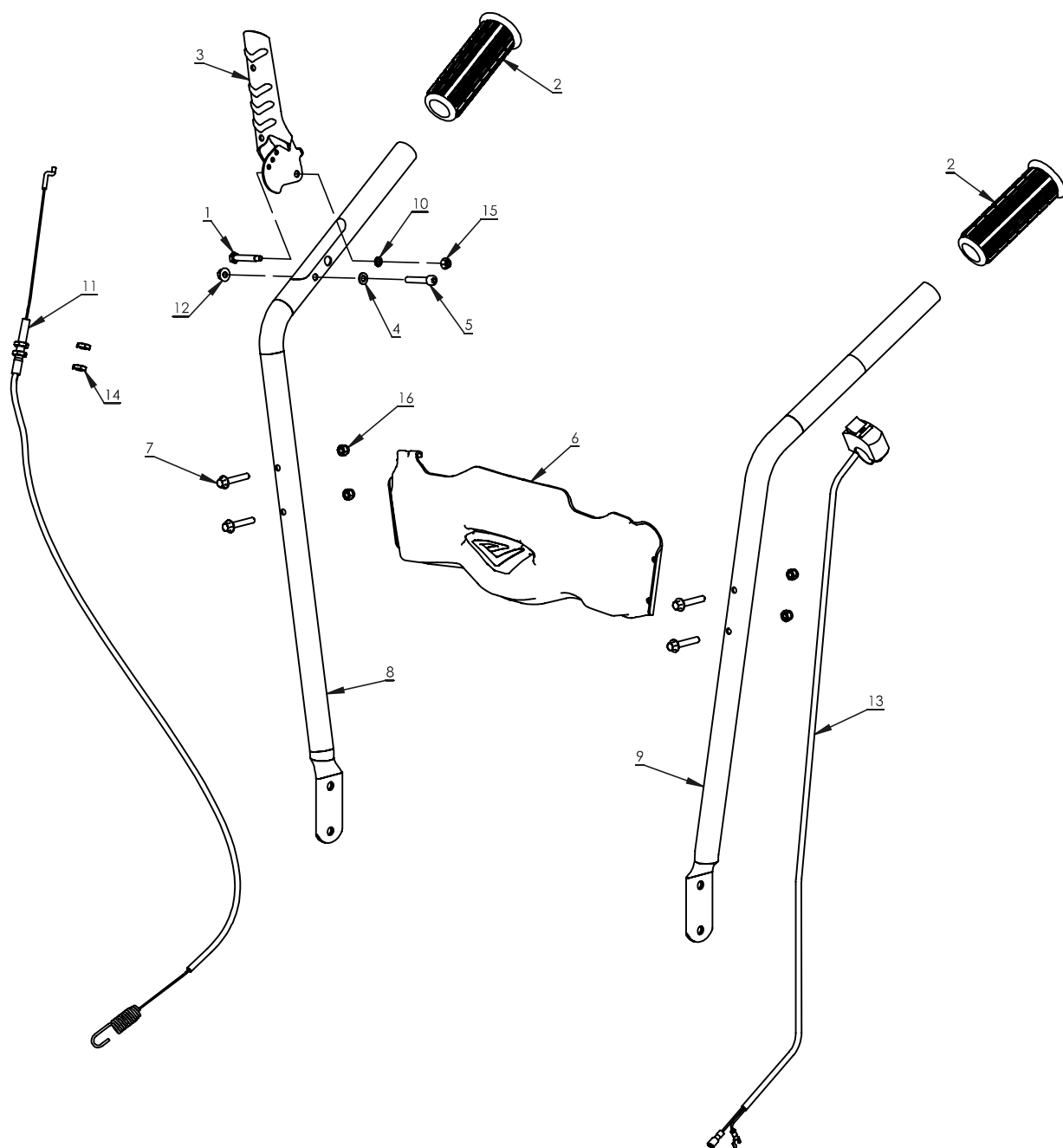
© 2022 Ardisam, Inc.  
All Rights Reserved  
Tous droits réservés  
P/N: 41079  
SVC: 05550  
ECN: 13703  
REV 2: 2022-05-04



[www.getearthquake.com](http://www.getearthquake.com) - (800) 345-6007

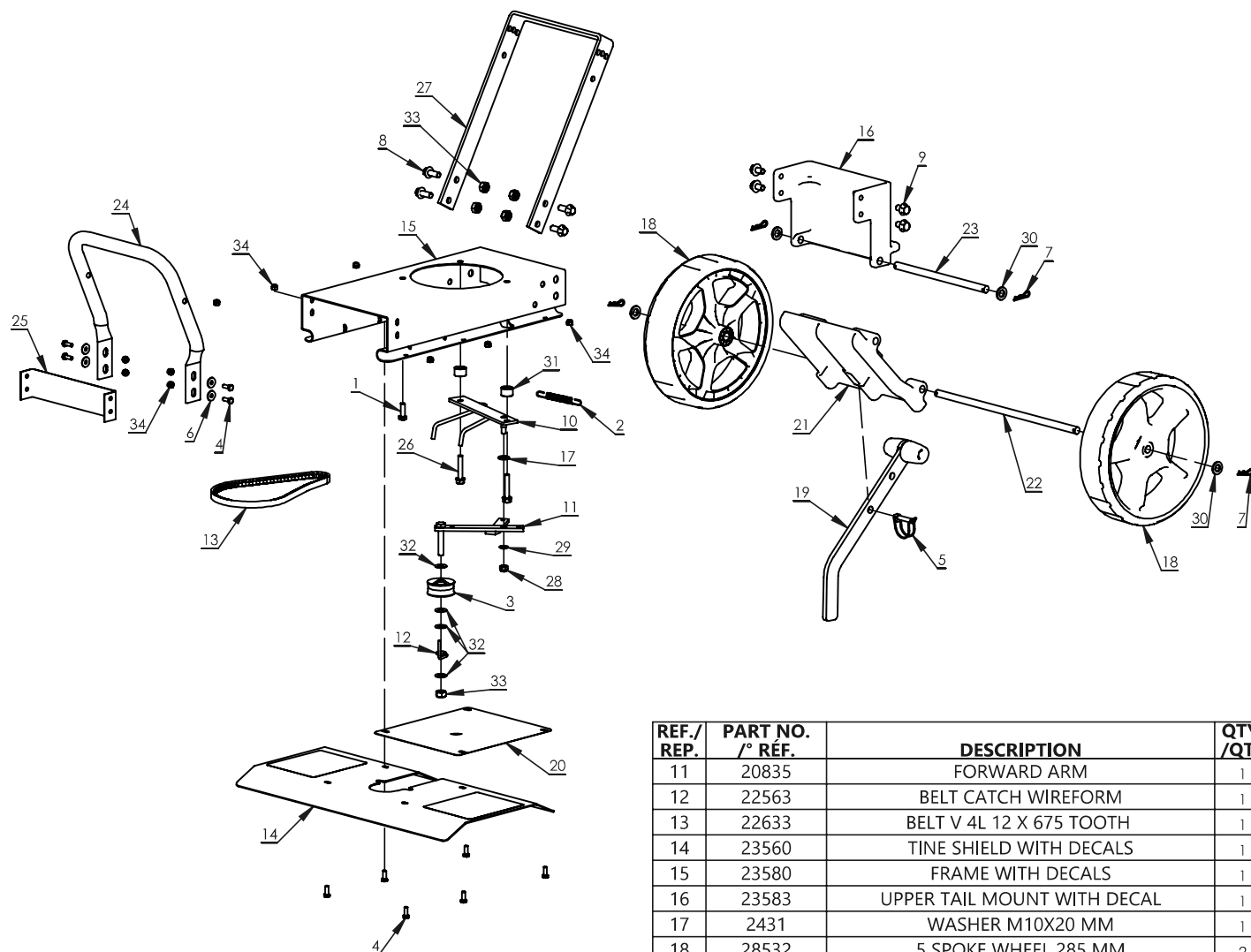


THIS INSTRUCTION BOOKLET CONTAINS IMPORTANT SAFETY INFORMATION. PLEASE READ AND KEEP FOR FUTURE REFERENCE.  
CE LIVRET D'INSTRUCTIONS CONTIENT DES INFORMATIONS IMPORTANTES SUR LA SÉCURITÉ. VEUILLEZ LE LIRE ET LE CONSERVER POUR TOUTE CONSULTATION EXTÉRIEURE.



| REF./<br>REP. | PART NO.<br>/° RÉF. | DESCRIPTION                      | QTY.<br>/QTÉ |
|---------------|---------------------|----------------------------------|--------------|
| 1             | 13159               | SHOULDER BOLT M5X0.8X7 MM        | 1            |
| 2             | 13833               | TEXTURED GRIP                    | 2            |
| 3             | 14902               | CLUTCH LEVER                     | 1            |
| 4             | 20141               | WASHER M6X12 MM                  | 1            |
| 5             | 20347               | SOCKET BOLT M6X1.0X35 MM         | 1            |
| 6             | 28216               | DASH WITH CHROME BADGE           | 1            |
| 7             | 28473               | FLANGE BOLT M6X1.0X35 MM         | 4            |
| 8             | 30289               | ASSY HANDLEBAR VERSA BLACK RIGHT | 1            |

| REF./<br>REP. | PART NO.<br>/° RÉF. | DESCRIPTION                     | QTY.<br>/QTÉ |
|---------------|---------------------|---------------------------------|--------------|
| 9             | 30290               | ASSY HANDLEBAR VERSA BLACK LEFT | 1            |
| 10            | 3308                | WASHER M5X10 MM                 | 1            |
| 11            | 34701               | ASSY CABLE DRIVE CTRL BADGER    | 1            |
| 12            | 35749               | FLANGE NUT M6X1.0X6.0 MM        | 1            |
| 13            | 41122               | KILL SWITCH AND WIRE            | 1            |
| 14            | 4620                | NUT M8X1.25X4.0 MM              | 2            |
| 15            | W1200128            | FLANGE NUT M5X0.8X4 MM          | 1            |
| 16            | W1265V0913          | NYLOCK NUT M6X1.0X8 MM          | 4            |

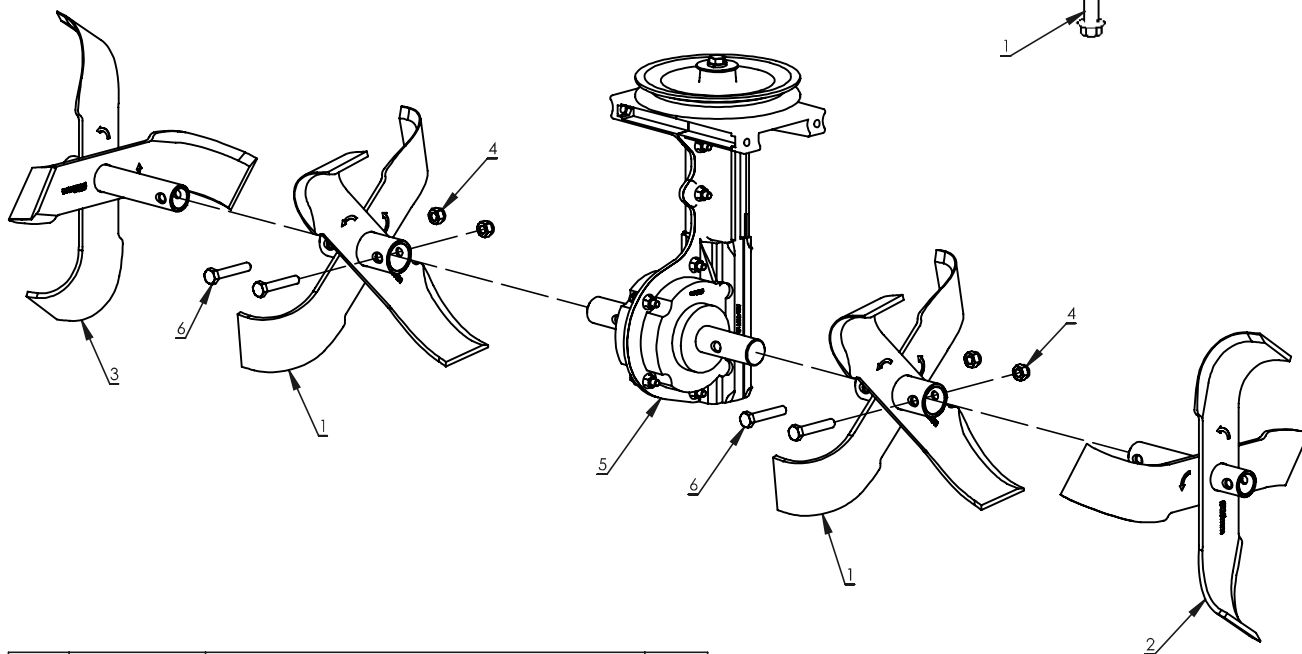
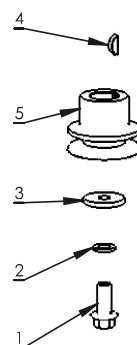
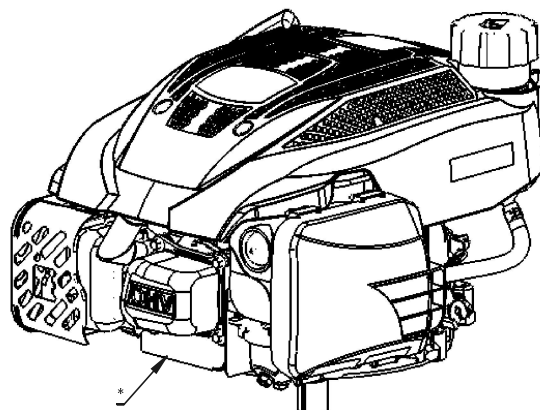


| REF./<br>REP. | PART NO.<br>/° RÉF. | DESCRIPTION               | QTY.<br>/QTÉ |
|---------------|---------------------|---------------------------|--------------|
| 1             | 13826               | BOLT M8X1.25X25 MM        | 1            |
| 2             | 1407                | 2 HOOK SPRING             | 1            |
| 3             | 1413                | IDLER PULLEY              | 1            |
| 4             | 17986               | BOLT M6X1.0X16 MM         | 10           |
| 5             | 18039               | LOCK PIN                  | 1            |
| 6             | 20148               | WASHER M6X18.8 MM         | 4            |
| 7             | 20173               | HAIRPIN                   | 4            |
| 8             | 20819               | FLANGE BOLT M10X1.5X25 MM | 4            |
| 9             | 20820               | FLANGE BOLT M10X1.5X16 MM | 4            |
| 10            | 20834               | BELT GUIDE AND MOUNT      | 1            |

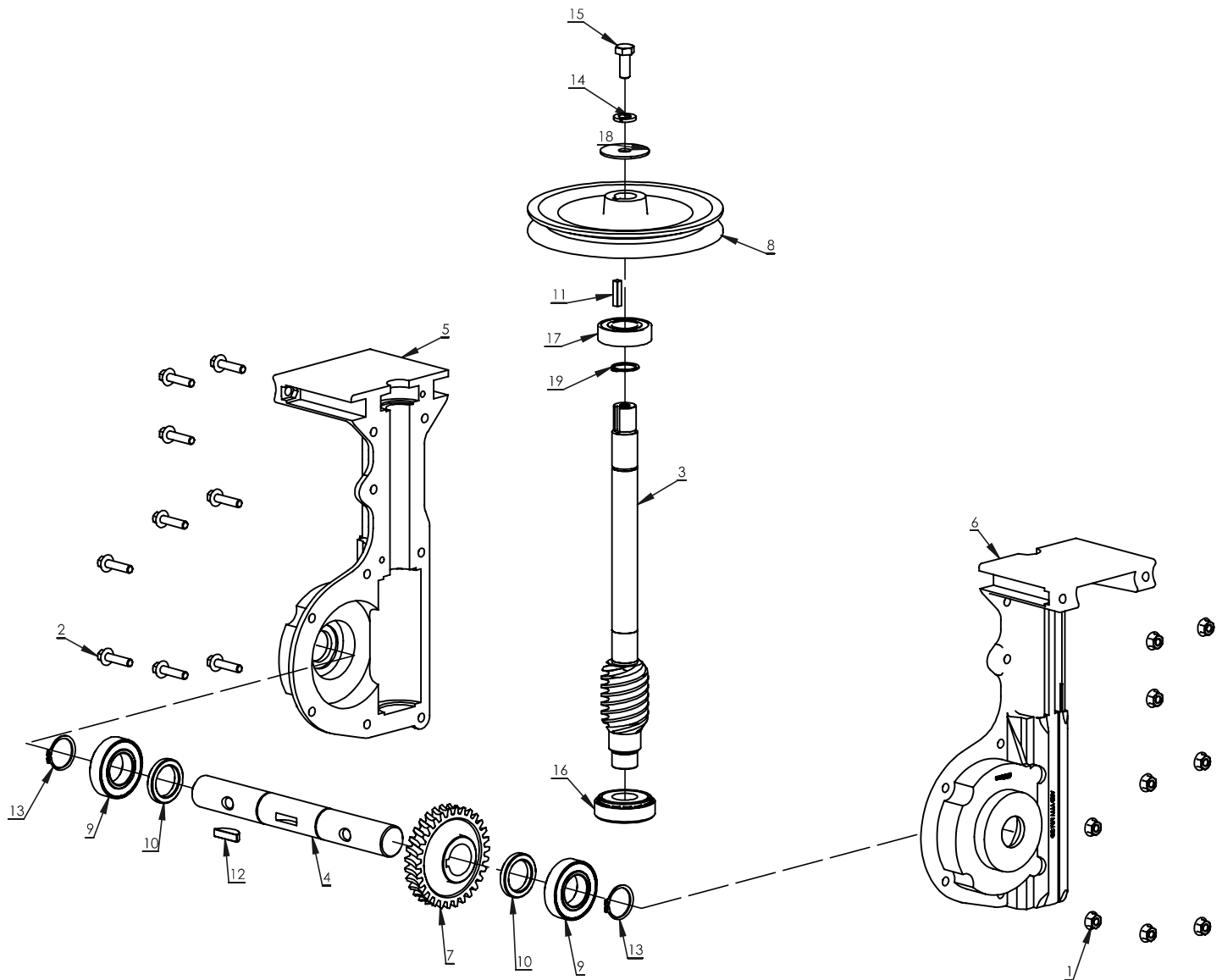
| REF./<br>REP. | PART NO.<br>/° RÉF. | DESCRIPTION                        | QTY.<br>/QTÉ |
|---------------|---------------------|------------------------------------|--------------|
| 11            | 20835               | FORWARD ARM                        | 1            |
| 12            | 22563               | BELT CATCH WIREFORM                | 1            |
| 13            | 22633               | BELT V 4L 12 X 675 TOOTH           | 1            |
| 14            | 23560               | TINE SHIELD WITH DECALS            | 1            |
| 15            | 23580               | FRAME WITH DECALS                  | 1            |
| 16            | 23583               | UPPER TAIL MOUNT WITH DECAL        | 1            |
| 17            | 2431                | WASHER M10X20 MM                   | 1            |
| 18            | 28532               | 5 SPOKE WHEEL 285 MM               | 2            |
| 19            | 31056               | T-HANDLE DRAG STAKE                | 1            |
| 20            | 3275                | FRAME SHIELD                       | 1            |
| 21            | 3330                | LOWER TAIL MOUNT                   | 1            |
| 22            | 3331                | WHEEL SHAFT                        | 1            |
| 23            | 3332                | SHAFT TAIL PIVOT                   | 1            |
| 24            | 3335                | LOWER HANDLEBAR FT                 | 1            |
| 25            | 3371                | COVER FOUR HOLE FT                 | 1            |
| 26            | 35226               | FLANGE BOLT M8X1.25X45 MM          | 2            |
| 27            | 39760               | HANDLEBAR MOUNT WITH DECAL         | 1            |
| 28            | 400023              | NYLOCK NUT M8X1.25X9.5 MM          | 1            |
| 29            | 400024              | WASHER M8X16 MM                    | 1            |
| 30            | 50175               | WASHER 13.3X24.0 MM                | 4            |
| 31            | 744                 | FORWARD ARM SPACER 10.5X22X14.5 MM | 2            |
| 32            | W1200126            | WASHER M10X21.25 MM                | 4            |
| 33            | W1265V0903          | NYLOCK NUT M10X1.5X8.4 MM          | 5            |
| 34            | W1265V0913          | NYLOCK NUT M6X1.0X8 MM             | 10           |

| REF./<br>REP. | PART NO.<br>/° RÉF. | DESCRIPTION              | QTY.<br>/QTÉ |
|---------------|---------------------|--------------------------|--------------|
| 1             | 16510               | FLANGE BOLT 3/8-24X1 IN  | 1            |
| 2             | 1916965             | LOCK WASHER 3/8 IN       | 1            |
| 3             | 331040              | WASHER 10X32 MM          | 1            |
| 4             | 331077              | WOODRUFF KEY 4X6.5X16 MM | 1            |
| 5             | 40968               | ENGINE PULLEY            | 1            |

\* ENGINE NOT SERVICED AS COMPLETE ASSEMBLY



| REF./<br>REP. | PART NO.<br>/° RÉF. | DESCRIPTION               |   |
|---------------|---------------------|---------------------------|---|
| 1             | 13903               | TINE SET INSIDE           | 2 |
| 2             | 13904               | TINE SET OUTSIDE LEFT     | 1 |
| 3             | 13905               | TINE SET OUTSIDE RIGHT    | 1 |
| 4             | 400023              | NYLOCK NUT M8X1.25X9.5 MM | 4 |
| 5             | 41175               | COMPLETE TRANSMISSION     | 1 |
| 6             | 800100              | BOLT M8X1.25X45 MM        | 4 |



| REF./<br>REP. | PART NO.<br>/° RÉF. | DESCRIPTION                       | QTY.<br>/QTÉ |
|---------------|---------------------|-----------------------------------|--------------|
| 1             | 13599               | FLANGE NUT M10X1.5X6.0 MM         | 9            |
| 2             | 13600               | FLANGE BOLT M5X0.8X12 MM          | 9            |
| 3             | 13610               | WORM DRIVESHAFT                   | 1            |
| 4             | 13612               | TINE SHAFT 25 MM                  | 1            |
| 5             | 13613               | CASTING ALUMINUM RIGHT 25MM SHAFT | 1            |
| 6             | 13614               | CASTING ALUMINUM LEFT 25MM SHAFT  | 1            |
| 7             | 13615               | BRONZE GEAR                       | 1            |
| 8             | 13619               | TRANSMISSION PULLEY               | 1            |
| 9             | 13902               | BALL BEARING 25 MM ID             | 2            |
| 10            | 14421               | SPACER 25X35X5.43 MM              | 2            |

| REF./<br>REP. | PART NO.<br>/° RÉF. | DESCRIPTION                           | QTY.<br>/QTÉ |
|---------------|---------------------|---------------------------------------|--------------|
| 11            | 17989               | KEY 5X5X20 MM                         | 1            |
| 12            | 17990               | WOODRUFF KEY 6X10X25 MM               | 1            |
| 13            | 1810                | RETAINING RING EXTERNAL 1.00 IN       | 2            |
| 14            | 1916965             | LOCK WASHER 3/8 IN                    | 1            |
| 15            | 24545               | BOLT M8X1.25X20 MM HH LH GR8.8 ZN F-T | 1            |
| 16            | 3220                | TAPERED ROLLER BEARING                | 1            |
| 17            | 3309                | BALL BEARING 20 MM ID                 | 1            |
| 18            | 803                 | WASHER 5/16X1-1/2 IN                  | 1            |
| 19            | 8924                | RING RETAINING EXTERNAL 3/4 IN        | 1            |



GROUNDBREAKING POWER EQUIPMENT

1730 Industrial Avenue  
PO Box 666  
Cumberland, WI 54829

Phone, Téléphone: (800) 345-6007  
Fax, Télécopieur: (715) 822-2124  
[www.getearthquake.com](http://www.getearthquake.com)