

Groundbreaking Power Equipment

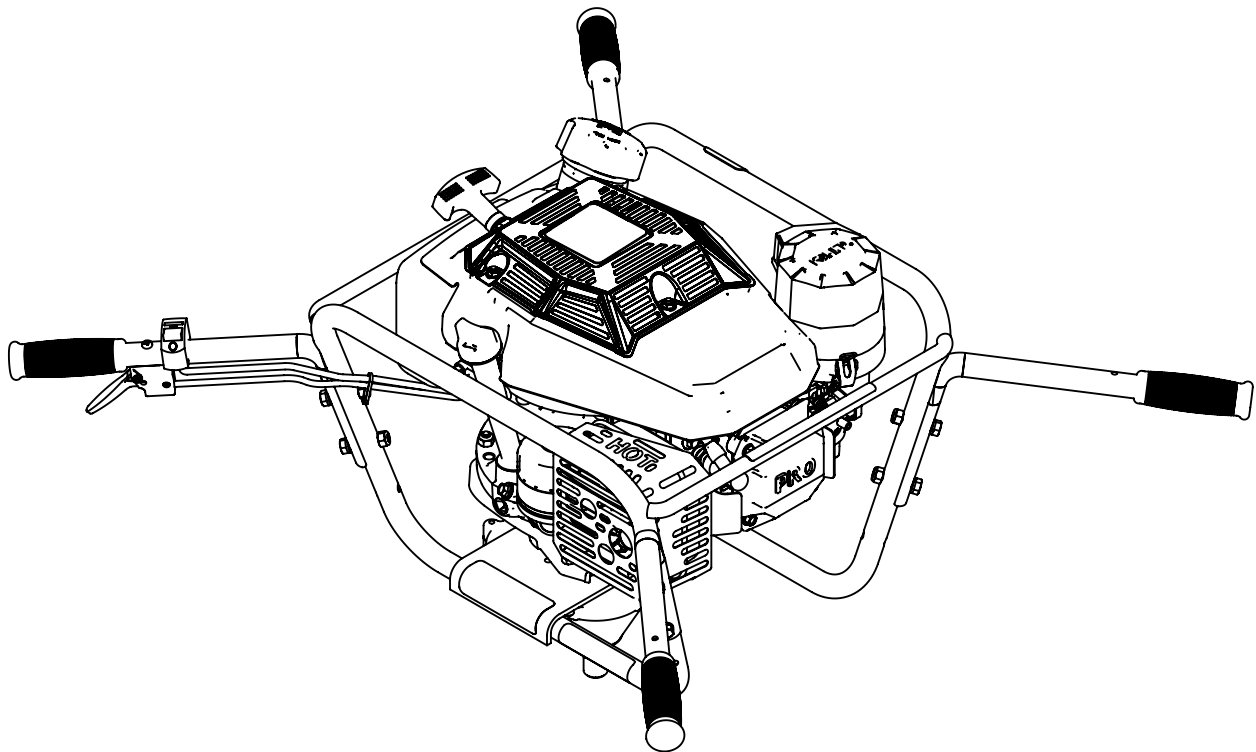
Illustrated Parts Breakdown  
Illustration des pièces détachées

**Model Number,  
Numéros de modèle :**  
**40774**

ENGLISH

FRANÇAIS

S/N

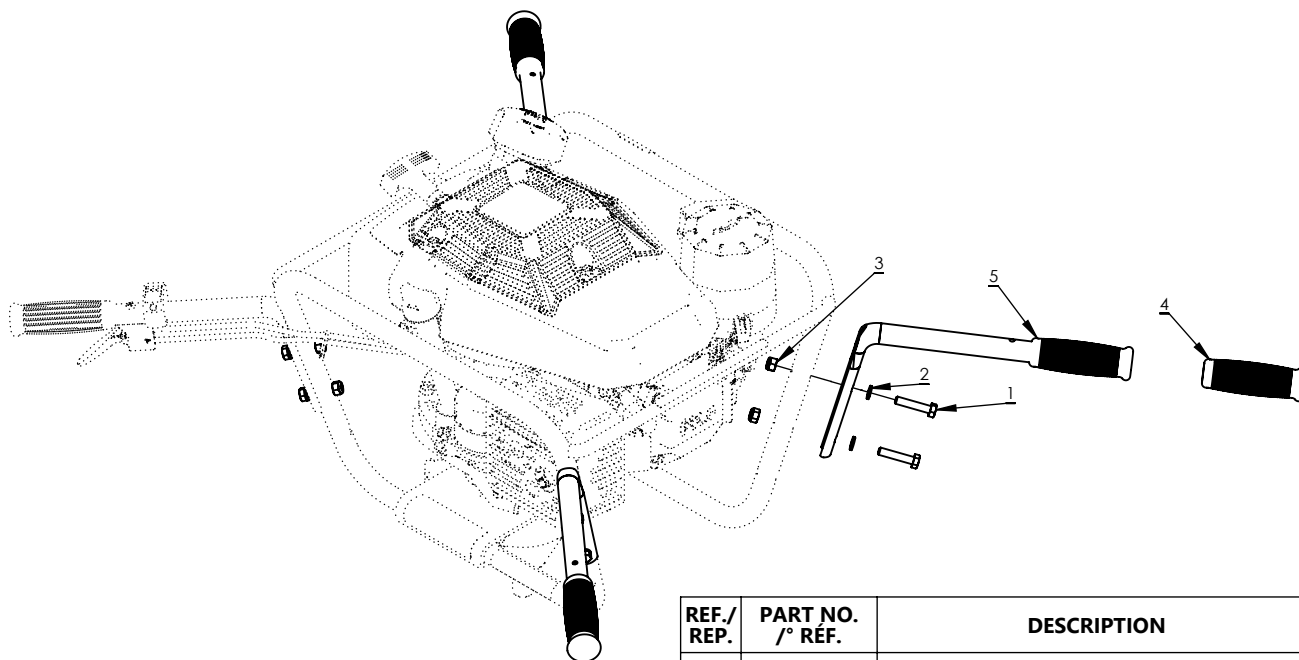


[www.getearthquake.com](http://www.getearthquake.com) - (800) 345-6007

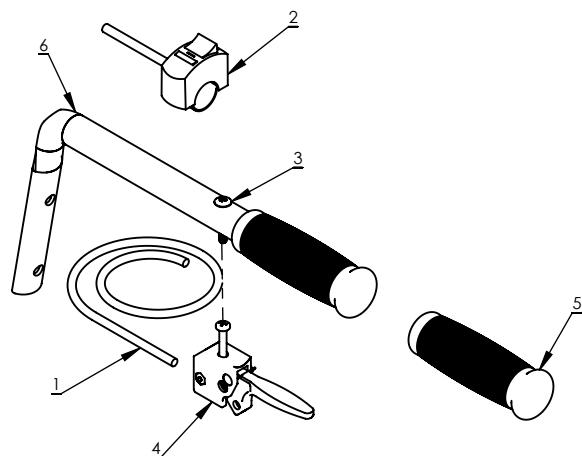
© 2022 Ardisam, Inc.  
All Rights Reserved  
Tous droits réservés  
P/N: 40763  
SVC: 05618  
ECN: 14053  
REV 3: 08/24/2022



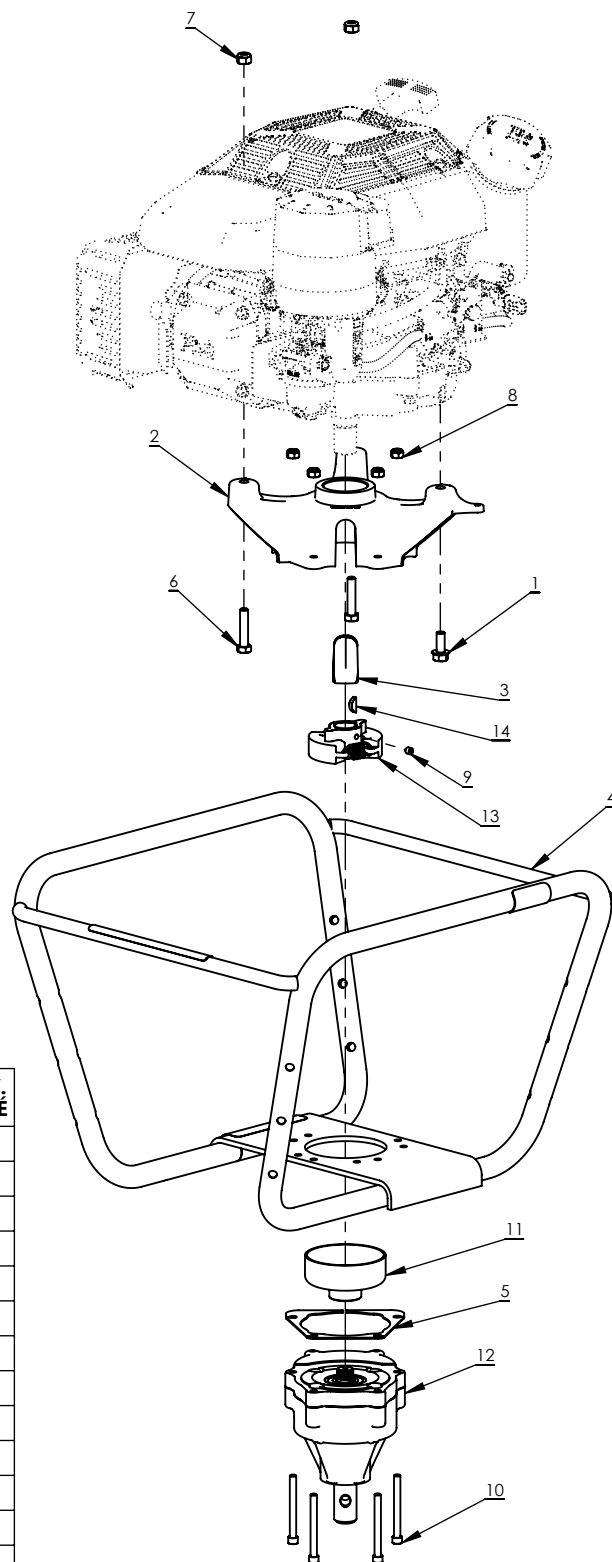
THIS INSTRUCTION BOOKLET CONTAINS IMPORTANT SAFETY INFORMATION. PLEASE READ AND KEEP FOR FUTURE REFERENCE.  
CE LIVRET D'INSTRUCTIONS CONTIENT DES INFORMATIONS IMPORTANTES SUR LA SÉCURITÉ. VEUILLEZ LE LIRE ET LE CONSERVER POUR TOUTE CONSULTATION EXTÉRIEURE.



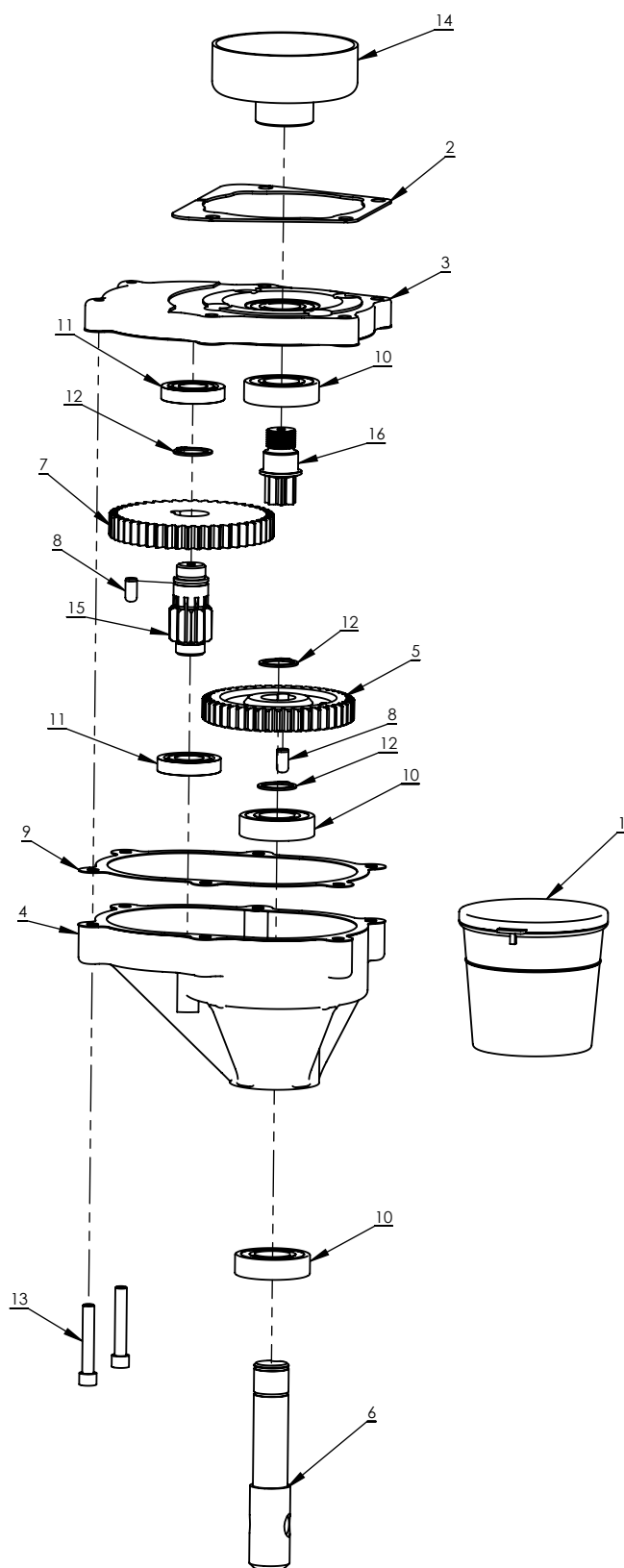
REF./ REP.	PART NO. /° RÉF.	DESCRIPTION	QTY. /QTÉ
1	503	BOLT 5/16 X 1-1/2	8
2	504	LOCK WASHER 5/16	8
3	60G5NY	NUT 5/16	8
4	9211	GRIP	1
5	9827	HANDLEBAR WITH GRIP	3



REF./ REP.	PART NO. /° RÉF.	DESCRIPTION	QTY. /QTÉ
1	22907	THROTTLE CABLE	1
2	42751	IGNITION SWITCH	1
3	4814	BOLT #10 X 1-1/4	1
4	4819	TRIGGER	1
5	9211	GRIP	1
6	9827	HANDLEBAR WITH GRIP	1



REF./ REP.	PART NO. /° RÉF.	DESCRIPTION	QTY. /QTÉ
1	18106	BOLT M8 X 20	1
2	22632	ADAPTER	1
3	22664	ADAPTER COVER	1
4	28046	FRAME WITH WARNING DECALS	1
5	3004149	SHIM TRANSMISSION	1
6	503	BOLT 5/16 X 1-1/2	2
7	60G5NY	NUT 5/16	2
8	67538	NUT 1/4	4
9	715	SET SCREW	1
10	8935	BOLT 1/4 X 2-1/2	4
11	9016	CLUTCH DRUM	1
12	9800BTRANC	TRANSMISSION ASSEMBLY	1
13	9825	CLUTCH ASSEMBLY	1
14	WK6	KEY	1



NOTE:

3 INCLUDES 2 · 9 · 10 · 11

4 INCLUDES 9 · 10 · 11

REF./ REP.	PART NO. /° RÉF.	DESCRIPTION	QTY. /QTÉ
1	11468	GREASE	1
2	3004149	SHIM TRANSMISSION	1
3	75300	TRANSMISSION TOP KIT WITH BEARINGS INSTALLED	1
4	75600	TRANSMISSION LOWER KIT WITH BEARINGS INSTALLED	1
5	8912	GEAR 44T	1
6	8913	OUTPUT SHAFT	1
7	8914	GEAR 48T	1
8	8915	DOWL PIN	2
9	8919	GASKET	1
10	8922	BEARING R12	3
11	8923	BEARING R10	2
12	8924	SNAP RING	3
13	8929	BOLT 1/4 X 1-1/2	2
14	9016	CLUTCH DRUM	1
15	9214A	PINION	1
16	9814	INPUT PINION	1



GROUNDBREAKING POWER EQUIPMENT

1730 Industrial Avenue  
PO Box 666  
Cumberland, WI 54829

Phone, Téléphone: (800) 345-6007  
Fax, Télécopieur: (715) 822-2124  
[www.getearthquake.com](http://www.getearthquake.com)