



Illustrated Parts Breakdown

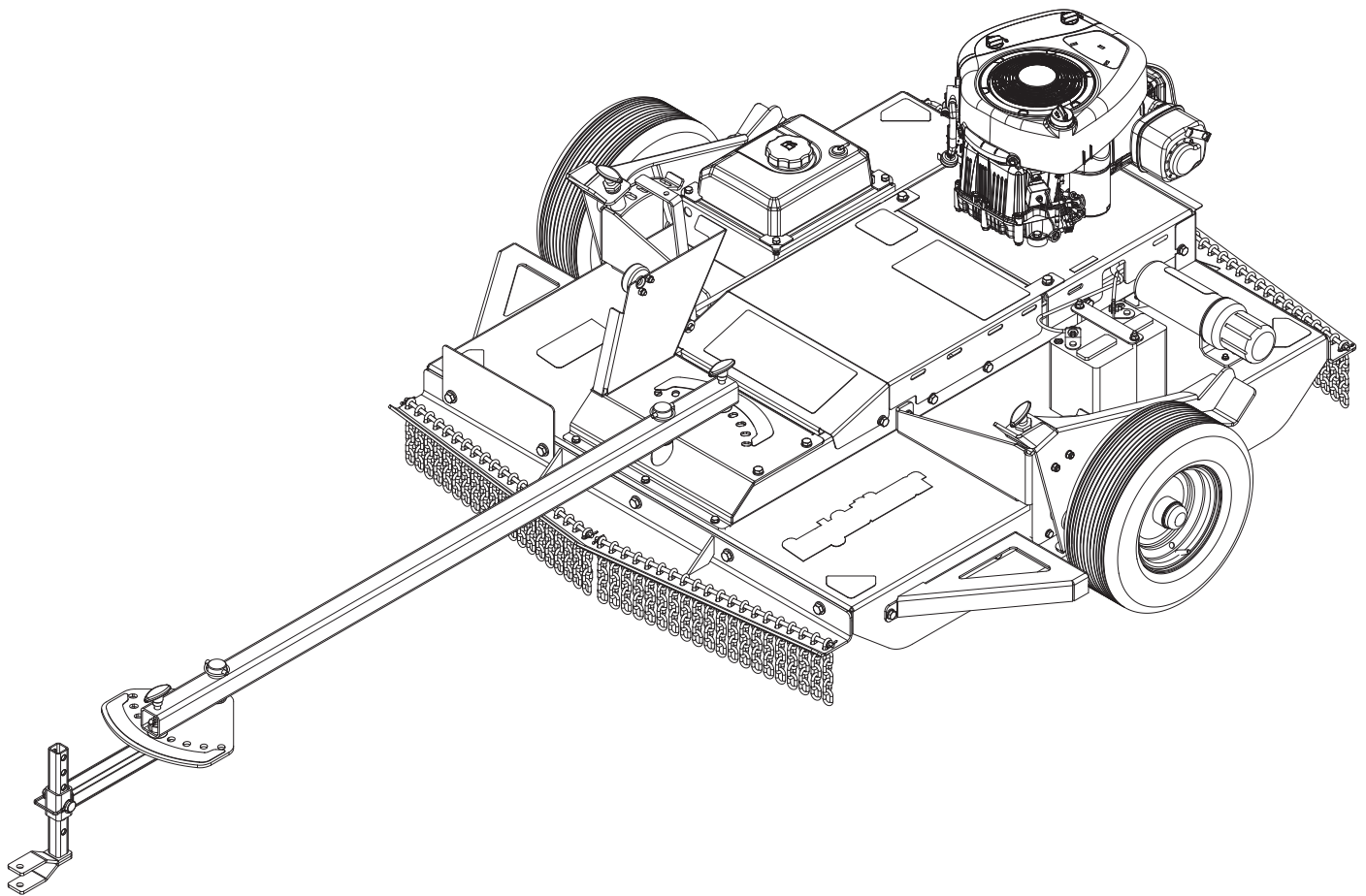
ACREAGE™
Rough Cut Mower

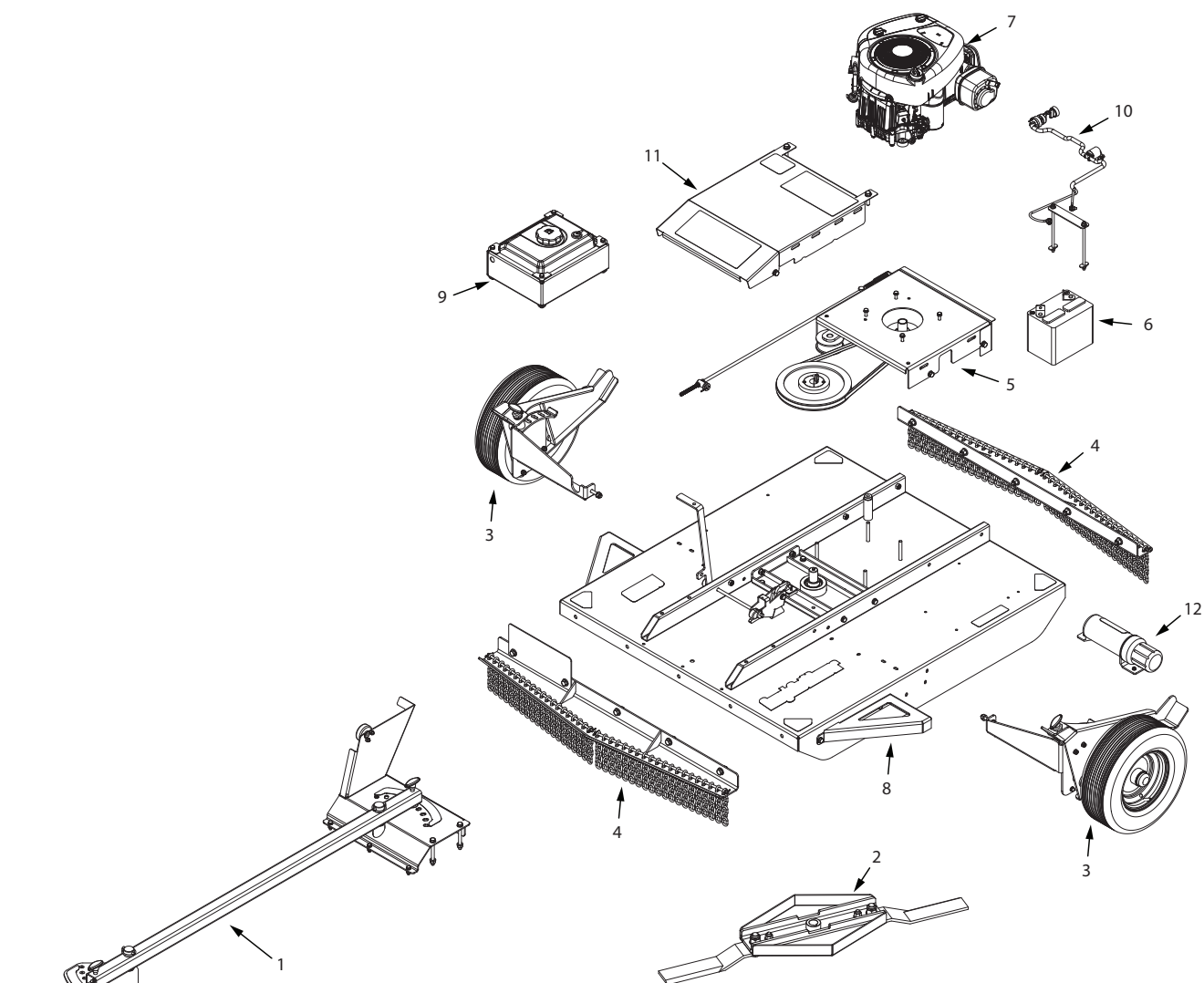
Model #'s: RC4432

ENGLISH

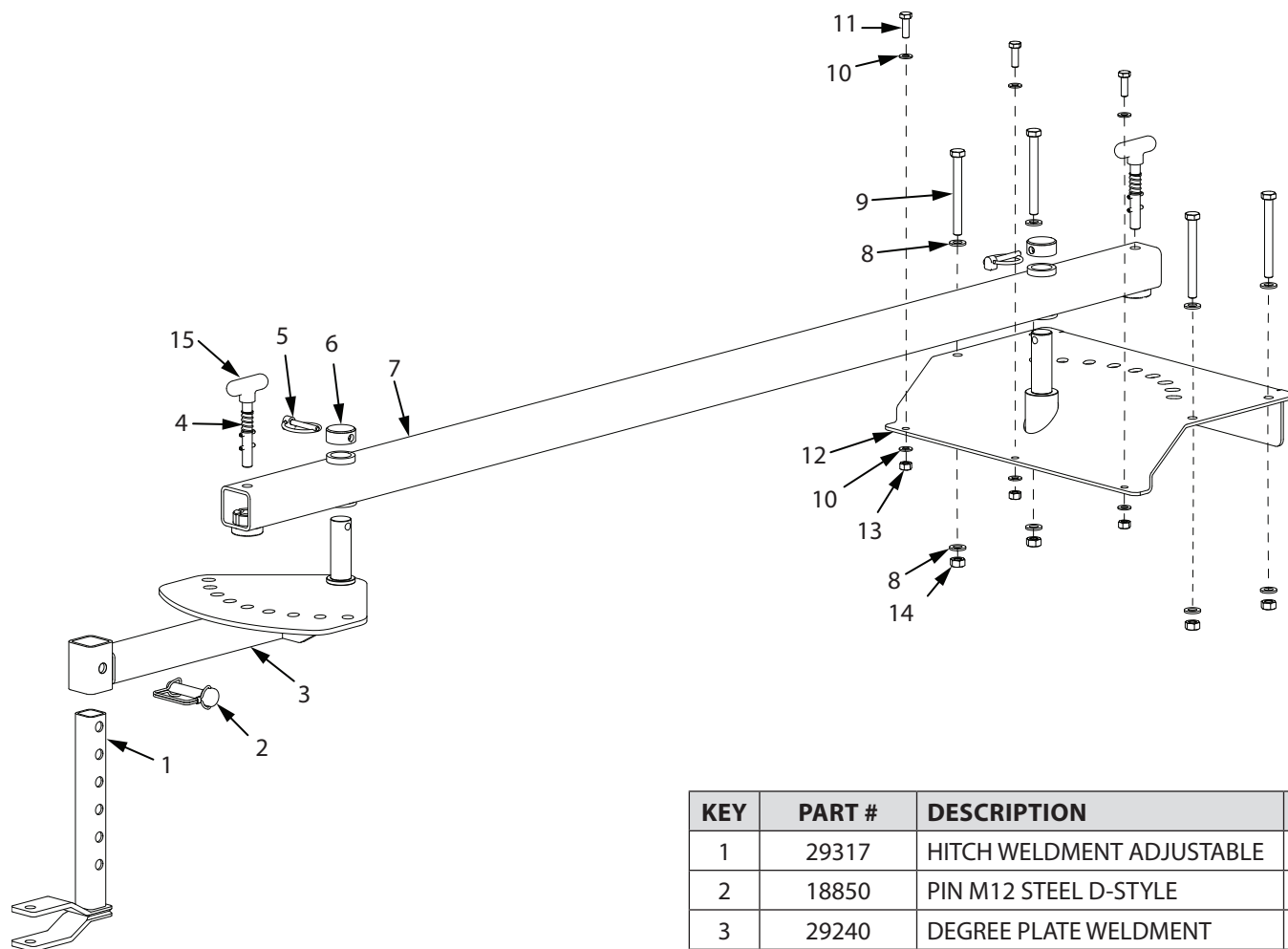
FRENCH

S/N



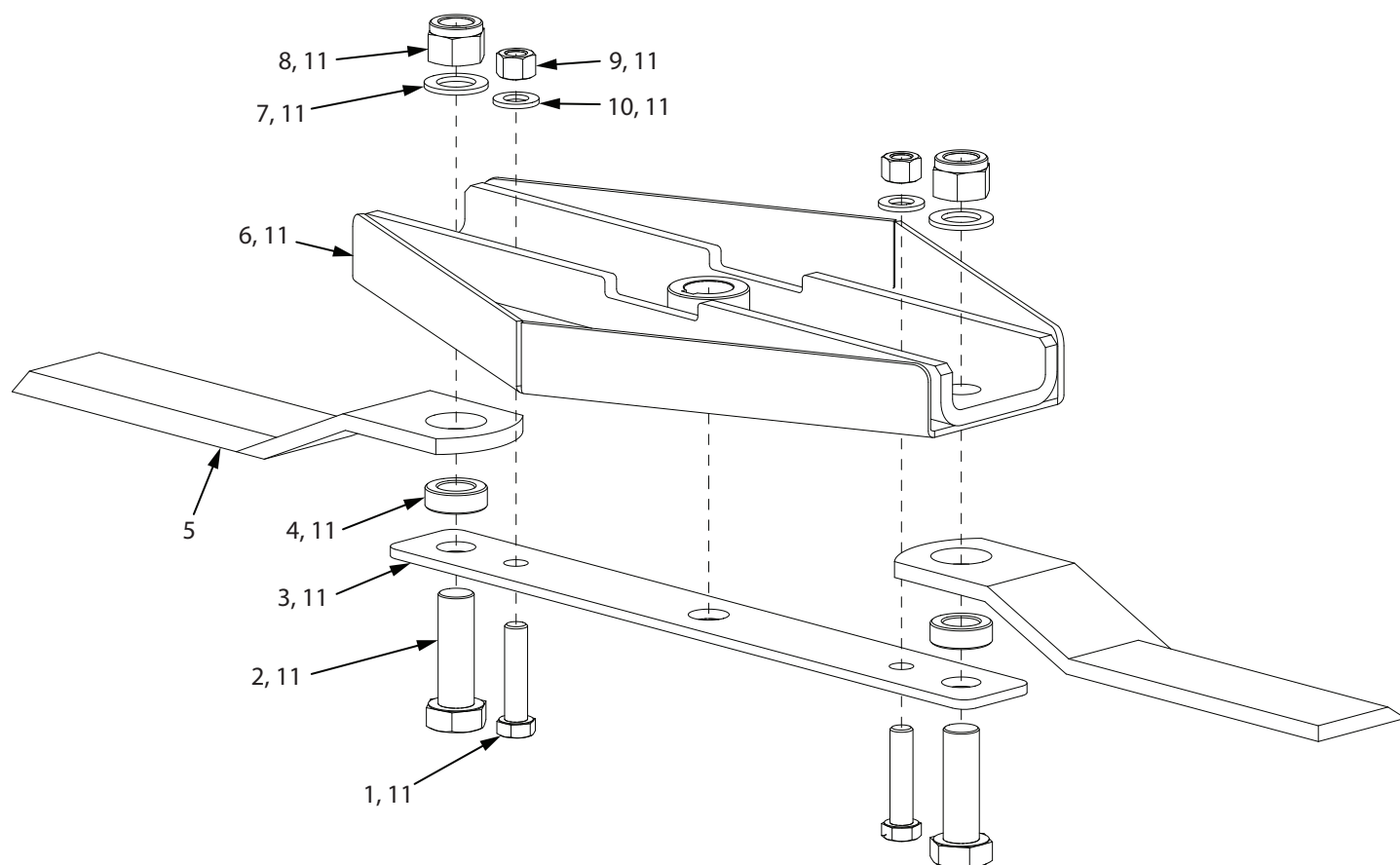


KEY	PART #	DESCRIPTION	QTY.
1	SEE PAGE 3	TONGUE/HITCH GROUP	1
2	SEE PAGE 4	BLADE GROUP	1
3	SEE PAGE 5	WHEEL GROUP	2
4	SEE PAGE 6	BRUSH GUARDS GROUP	2
5	SEE PAGE 7	ENGINE MOUNT GROUP	1
6	21574	BATTERY LEAD ACID 165CCA	1
7	24569	17.5 HP BRIGGS	1
8	SEE PAGES 9 - 10	MOWER DECK GROUP	1
9	SEE PAGE 10	GAS TANK GROUP	1
10	SEE PAGE 8	WIRING HARNESS GROUP	1
11	SEE PAGE 11	PULLEY COVER GROUP	1
12	SEE PAGE 11	MANUAL GROUP	1



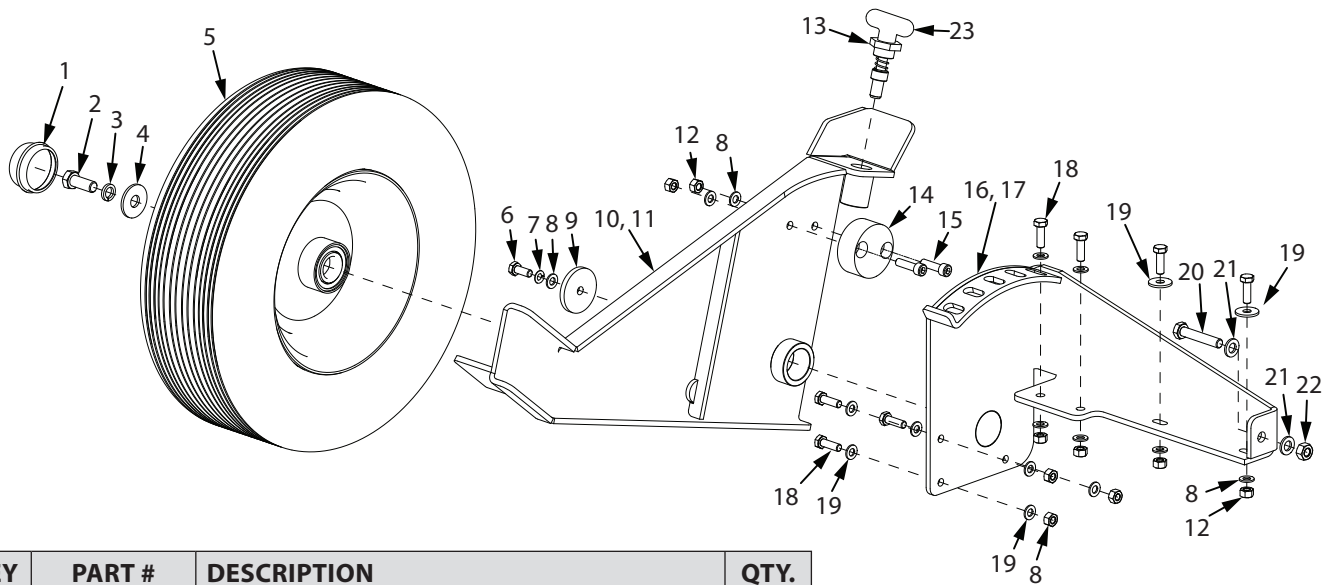
KEY	PART #	DESCRIPTION	QTY.
1	29317	HITCH WELDMENT ADJUSTABLE	1
2	18850	PIN M12 STEEL D-STYLE	1
3	29240	DEGREE PLATE WELDMENT	1
4	29314	KIT TONGUE LATCH PIN	2
5	18847	LOCK PIN RING	2
6	21647	CAP SHAFT MOUNT	2
7	21575	TOW BAR WELDMENT	1
8	2431	WASHER M10 X 20 X 2 FLAT	8
9	21642	BOLT M10 X 1.5 X 100 HEX	4
10	400024	WASHER M8 X 16 X 1.6 FLAT	6
11	13826	BOLT M8 X 1.25 X 25 HEX	3
12	29238	DECK MOUNT TOW BAR	1
13	400023	NUT M8 NYLOC	3
14	W1265V0903	NUT M10 NYLOC	4
15	29311	HANDLE	4

ILLUSTRATED PARTS BREAKDOWN - Blade Mount Group



KEY	PART #	DESCRIPTION	QTY.
1	33957	BOLT M14 X 55 HEX	2
2	21669	BOLT M22 X 70 HEX	2
3	21665	BOTTOM BRACE BLADE MOUNT	1
4	21667	BUSHING BLADE MOUNT	2
5	21666	BLADE ROUGH CUT MOWER	2
6	21664	BLADE MOUNT WELDMENT	1
7	21674	WASHER M22 X 39 X 3 FLAT	2
8	21671	NUT M22 X 1.5 NYLOC	2
9	21670	NUT M14 X 1.5 NYLOC	2
10	21673	WASHER M14 X 28 X 2.8 FLAT	2
11	21873	BLADE MOUNT ASSEMBLY	1

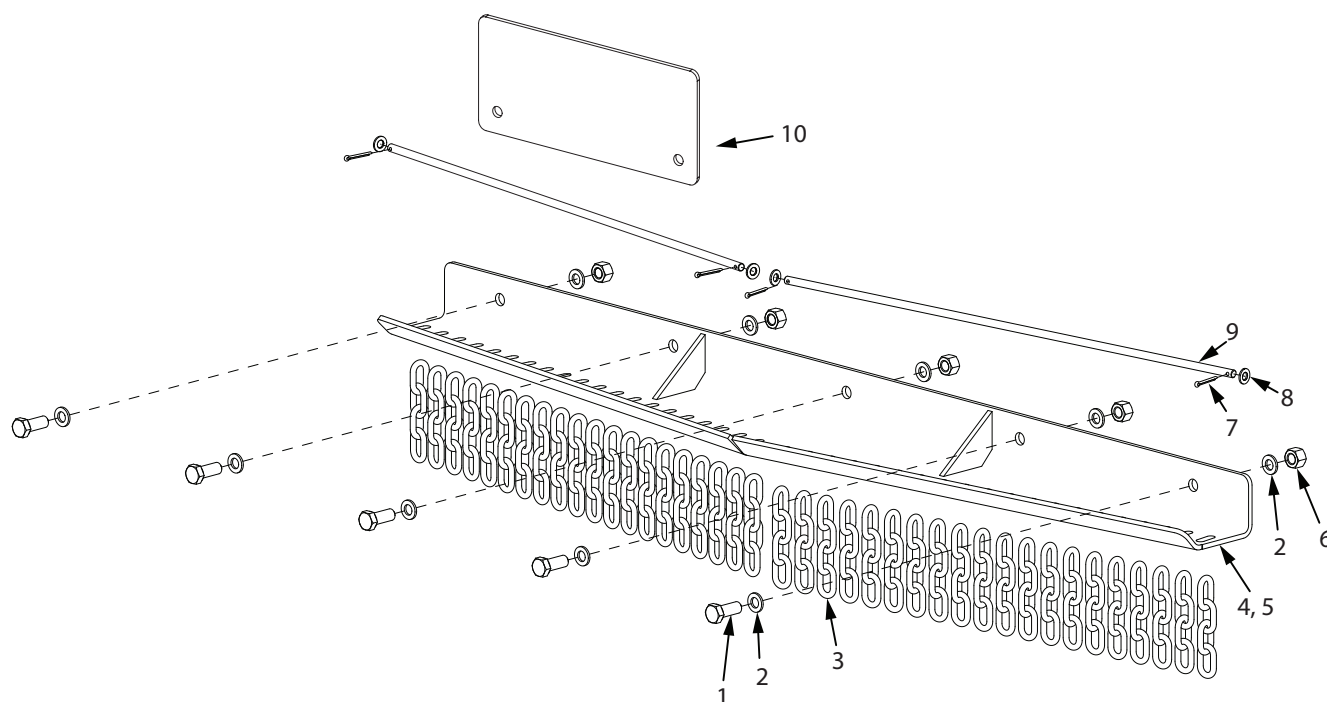
ILLUSTRATED PARTS BREAKDOWN - Wheel Mounts Group



KEY	PART #	DESCRIPTION	QTY.
1	21611	WHEEL CAP	1
2	21613	BOLT M12 X 1.75 X 30 HEX	1
3	21615	WASHER M12 SPRING LOCK	1
4	21614	WASHER M12 X 37 X 3 FLAT	1
5	29262	WHEEL AND TIRE ASSEMBLY	1
6	18106	BOLT M8 X 1.25 X 20 HEX	1
7	21640	WASHER M8 SPRING LOCK	1
8	400024	WASHER M8 X 16 X 1.6 FLAT	13
9	21641	BUSHING RETAINER	1
10	21623*	WHEEL HUB BATTERY BOX SIDE	1
11	21602*	WHEEL HUB GAS TANK SIDE	1
12	400023	NUT M8 NYLOC	9
13	29313	WHEEL LATCH PIN ASSEMBLY	1
14	21616	WHEEL HUB SPACER	1
15	21618	BOLT M8 X 1.25 X 30 SOCKET	2
16	21635*	DECK HEIGHT ADJUSTER BATTERY BOX SIDE	1
17	23494*	DECK HEIGHT ADJUSTER ENGAGE LEVER SIDE	1
18	13826	BOLT M8 X 1.25 X 25 HEX	7
19	3245	WASHER M8 X 24 X 2.2 FLAT	2
20	21600	BOLT M10 X 1.5 X 55 HEX	1
21	2431	WASHER M10 X 20 X 2 FLAT	2
22	W1265V0903	NUT M10 NYLOC	1
23	29313	HANDLE PIN	4

*Order Wheel Hubs and Deck Height Adjusters according to their description.
If you require assistance, please call Earthquake® at 1-800-345-6007.

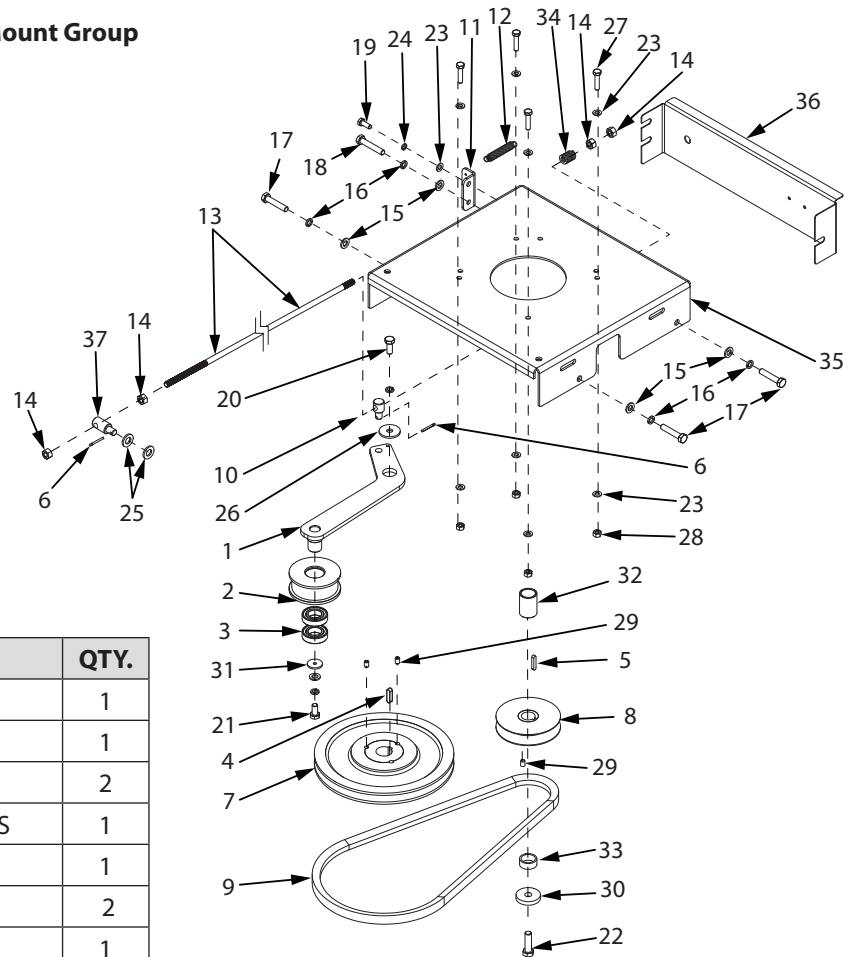
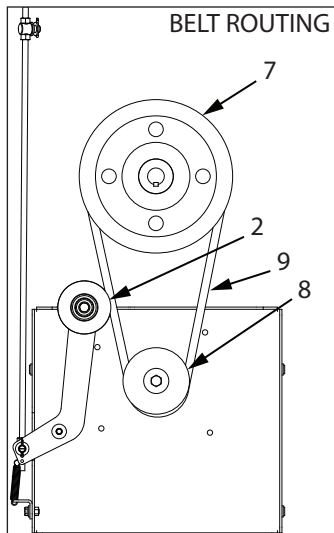
ILLUSTRATED PARTS BREAKDOWN - Brush Guards Group



KEY	PART #	DESCRIPTION	QTY.
1	21613	BOLT M12 X 1.75 X 30 HEX	5
2	21632	WASHER M12 X 24 X 2.5 FLAT	10
3	21354	CHAIN ASSEMBLY	40
4	29254*	BRUSH GUARD TOW BAR SIDE	1
5	29148*	BRUSH GUARD ENGINE SIDE	1
6	18274	NUT M12 NYLOC	5
7	21304	COTTER PIN	4
8	400024	WASHER M8 X 16 X 1.6 FLAT	4
9	21374	ROD CHAIN MOUNT	2
10	29256	DEFLECTOR	1

*Order Brush Guards according to their description. If you require assistance, please call Earthquake® at 1-800-345-6007.

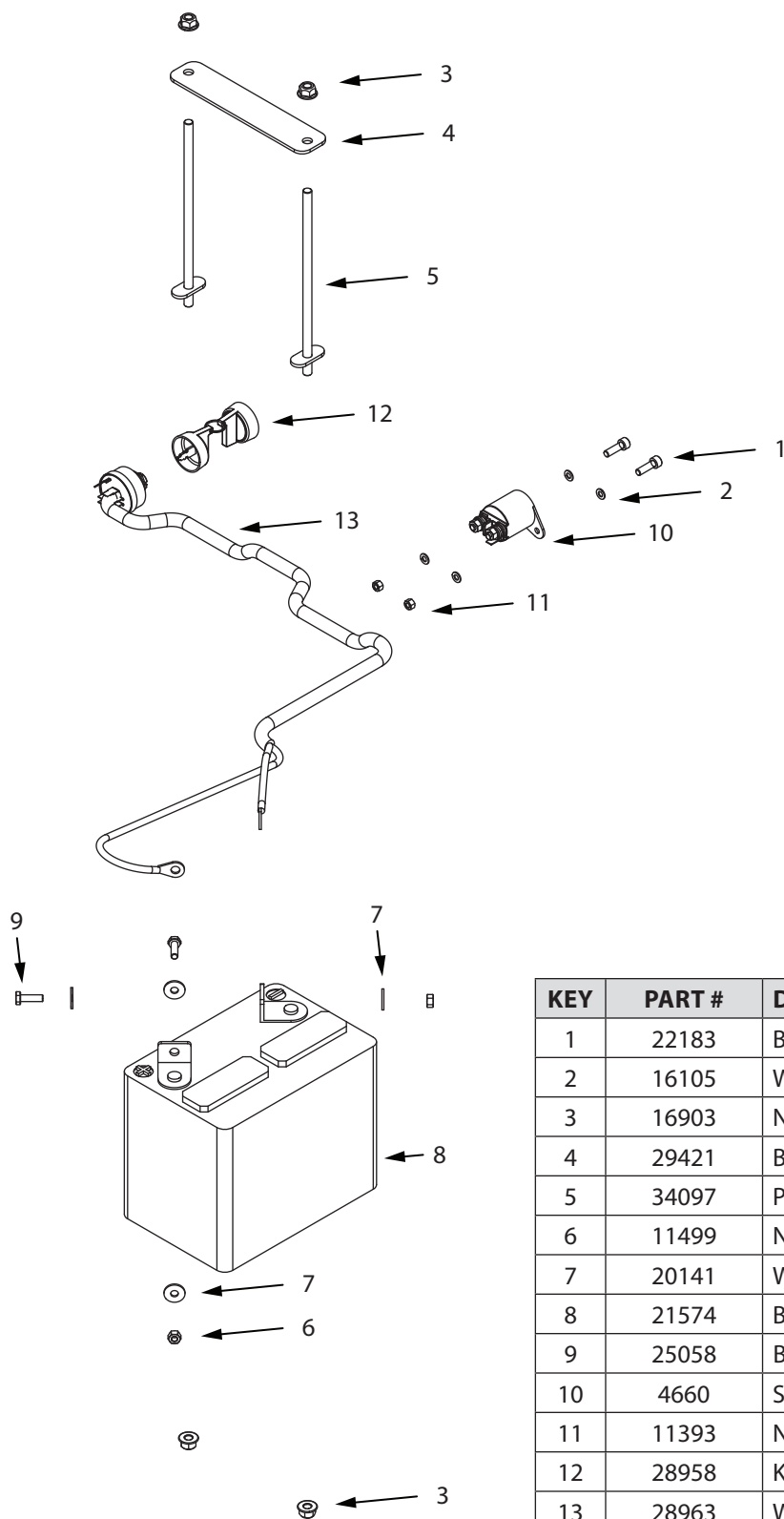
ILLUSTRATED PARTS BREAKDOWN - Engine Mount Group



KEY	PART #	DESCRIPTION	QTY.
1	21699	IDLER PULLEY PIVOT ARM	1
2	21700	PULLEY 85MM	1
3	21702	BEARING	2
4	21691	KEY 30 X 7 8MM X 4 RADIUS	1
5	21694	KEY CRANK SHAFT	1
6	21304	COTTER PIN	2
7	21693	PULLEY 236.4MM	1
8	22077	ASSEMBLY ENGINE PULLEY WITH SET SCREW	1
9	21701	BELT	1
10	21598	MOUNT ENGAGE ROD	1
11	21659	MOUNT SPRING	1
12	21660	SPRING 20.5MM X 19 COILS X 3MM WIRE	1
13	23427	ENGAGE ROD	1
14	29387	NUT M10 X 1.5 HEX	4
15	2431	WASHER M10 X 20 X 2 FLAT	5
16	30697	WASHER M10 SPRING LOCK	6
17	20145	BOLT M10 X 1.5 X 50 HEX	3
18	21600	BOLT M10 X 1.5 X 55 HEX	1
19	13826	BOLT M8 X 1.25 X 25 MM HEX	1
20	19124	BOLT M10 X 1.5 X 25 HEX	1
21	3238	BOLT M10 X 1.5 X 20 HEX	1
22	21722	BOLT M12 X 1.75 X 40 HEX	1

KEY	PART #	DESCRIPTION	QTY.
23	400024	WASHER M8 X 16 X 1.6 FLAT	9
24	21640	WASHER M8 SPRING LOCK	1
25	21632	WASHER M12 X 24 X 2.5 FLAT	2
26	10811	WASHER M12 X 37 X 3 FLAT	1
27	20816	BOLT M8 X 1.25 X 35 HEX	4
28	400023	NUT M8 HEX	4
29	3313	SET SCREW M8 X 1.25 X 12 MM	2
30	21721	RETAINER CRANK SHAFT	1
31	21595	RETAINER BELT ENGAGE IDLER	1
32	22044	SPACER 32 X 26.3 X 45 MM	1
33	22547	SPACER 32 X 26.3 X 13 MM	1
34	23419	BELT TENSION SPRING	1
35	29263	PANEL ENGINE MOUNT	1
36	29384	KEY PANEL	1
37	24098	MOUNT ENGAGEMENT	1

ILLUSTRATED PARTS BREAKDOWN - Battery Box Group



KEY	PART #	DESCRIPTION	QTY.
1	22183	BOLT M5 X 0.8 X 20 HEX HEAD	2
2	16105	WASHER M5 X 10 X 1.0 FLAT	4
3	16903	NUT M10 NYLOC	4
4	29421	BRACKET BATTERY TIE DOWN	1
5	34097	POST BATTERY TIE DOWN	2
6	11499	NUT M6 NYLOC	2
7	20141	WASHER M6 X 12 X 1.6 FLAT	4
8	21574	BATTERY LEAD ACID 165 CCA	1
9	25058	BOLT M6 X 1.0 X 20 HEX	2
10	4660	SOLENOID	1
11	11393	NUT M5 NYLOC	2
12	28958	KEY SET	1
13	28963	WIRE HARNESS	1

This technical drawing is an exploded view of a mechanical assembly, showing the relationship between various components. The main body of the assembly is a large rectangular plate (1) with a central circular feature. Two L-shaped brackets (3 and 4) are shown being attached to the sides of the plate using screws (8) and washers (9). A central vertical rod (2) passes through the plate, with a nut (5) at the bottom and a cap (6) at the top. A horizontal rod (7) is also shown. A complex bracket (19) is shown being attached to the side of the plate using a pin (10) and a washer (8). A small rectangular component (20) is shown being attached to the side of the plate using a pin (10) and a washer (8). A small rectangular component (21) is shown being attached to the side of the plate using a pin (10) and a washer (8). A small rectangular component (22) is shown being attached to the side of the plate using a pin (10) and a washer (8). The diagram uses dashed lines to indicate the alignment and assembly path of the components.

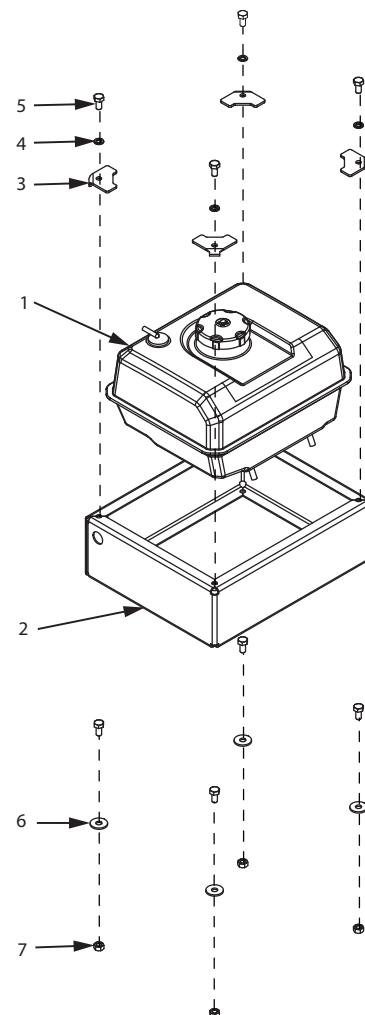
KEY	PART #	DESCRIPTION	QTY.
1	-	DECK*	1
2	21690	ASSEMBLY DRIVE SHAFT MOWER	1
3	29221	WHEEL GUARD GAS TANK SIDE	1
4	29222	WHEEL GUARD BATTERY SIDE	1
5	21716	M24 CASTLE NUT	1
6	21715	PIN COTTER 4 X 44MM LONG	1
7	21692	KEY 45 X 8 X 10 MM X 5 RADIUS	1
8	2431	WASHER M10 X 20 X 2 FLAT	20
9	21247	BOLT M10 X 1.5 X 30 HEX HEAD	10
10	W1265V0903	NUT M10 HNYLK	11
11	21717	WASHER M24 X 44 X 4.6 FLAT	1

KEY	PART #	DESCRIPTION	QTY.
12	23498	BOLT M8 X 44 X 4.6 FLAT	1
13	13508	NUT M8 1.0 HSF	5
14	400024	WASHER M8 8.4 X 16 X 1.6 FLAT	10
15	23410	PIVOT BRAKE ARM	1
16	21704	ASSEMBLY DRIVE BRAKE	1
17	21872	BOLT M10 X 1.5 X 45	1
18	20816	BOLT M8 X 1.25 35 HEX	1
19	23411	ASSEMBLY CAM	1
20	23417	CAM ROD BRACKET	1
21	24114	BRAKE SPRING	1
22	24115	BRAKE PIN	1

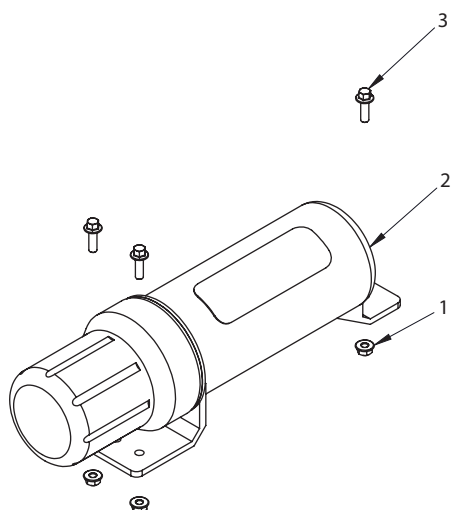
* Deck cannot be replaced, please contact Earthquake® at 1-800-345-6007 for details.

ILLUSTRATED PARTS BREAKDOWN - Gas Tank Kit

KEY	PART #	DESCRIPTION	QTY.
1	21654	GAS TANK RC4432	1
2	23424	ASSEMBLY GAS TANK BOX	1
3	23426	CUSTOM WASHER	4
4	W1200114	WASHER M8 X 1.9 SPRLK BLK OX HIGH COLLAR	4
5	17984	BOLT M8 X 1.25 X 16 HEX	8
6	3245	WASHER M8 8.4MM X 24MM X 2.2MM ZN	4
7	W1265V0900	NUT M8 X 1.25 HNYLK GR8.8 ZN	4

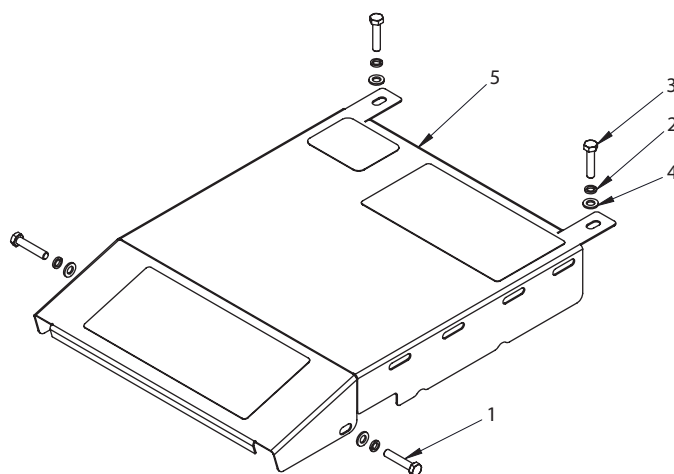


ILLUSTRATED PARTS BREAKDOWN - Canister Replacement Kit

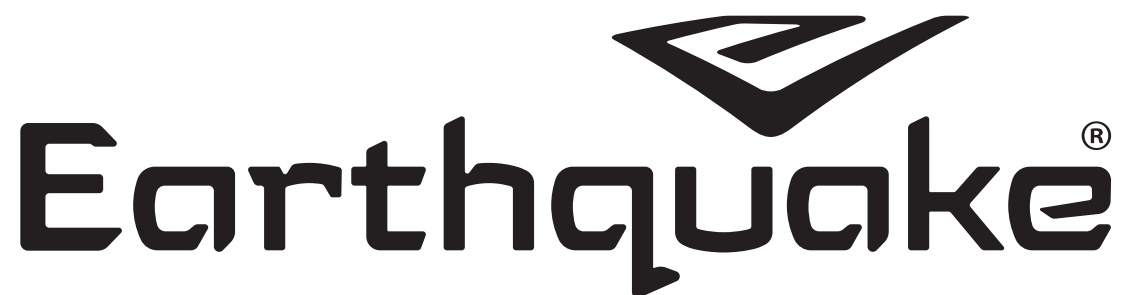


KEY	PART #	DESCRIPTION	QTY.
1	13599	M6 NUT	3
2	21655	MANUAL CANISTER MAIN BODY	1
3	25058	M6 BOLT	3

ILLUSTRATED PARTS BREAKDOWN - Hatch Panel Replacement Kit



KEY	PART #	DESCRIPTION	QTY.
1	20145	M10 BOLT	2
2	21656	WASHER M10 SPRING LOCK	4
3	24176	M10 BOLT	2
4	2431	WASHER M10 FLAT	4
5	29208	HATCH PANEL ASSEMBLY	1



ARDISAM, INC.
1160 Eighth Avenue
PO Box 755
Cumberland, WI 54829

Phone: (800) 345-6007
Fax: (715) 822-2124
www.GetEarthquake.com