

Groundbreaking Power Equipment

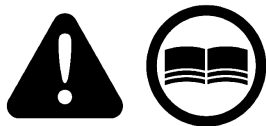
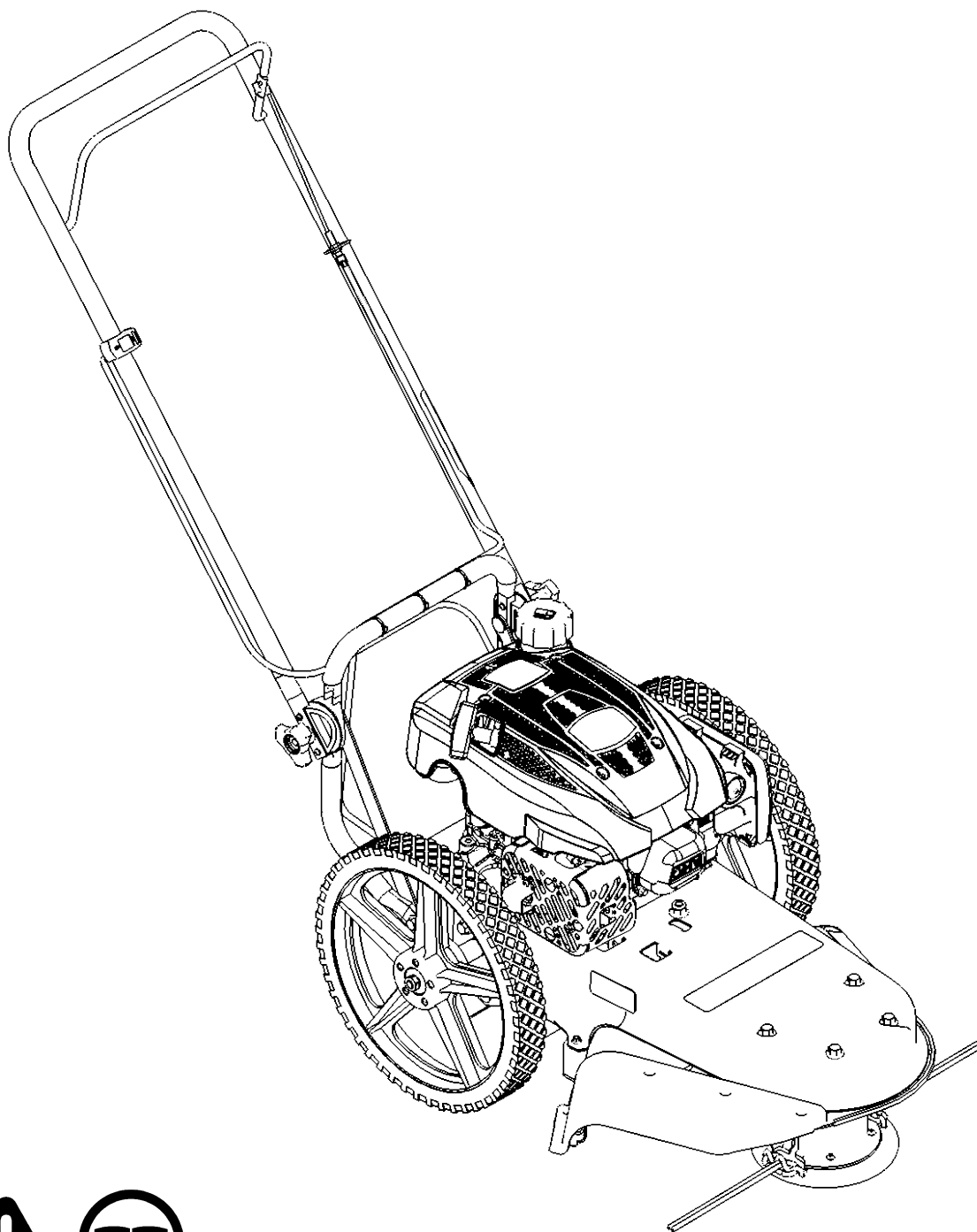
Illustrated Parts Breakdown
Illustration des pièces détachées

**Model Number,
Numéros de modèle :**
45901

ENGLISH

FRANÇAIS

S/N

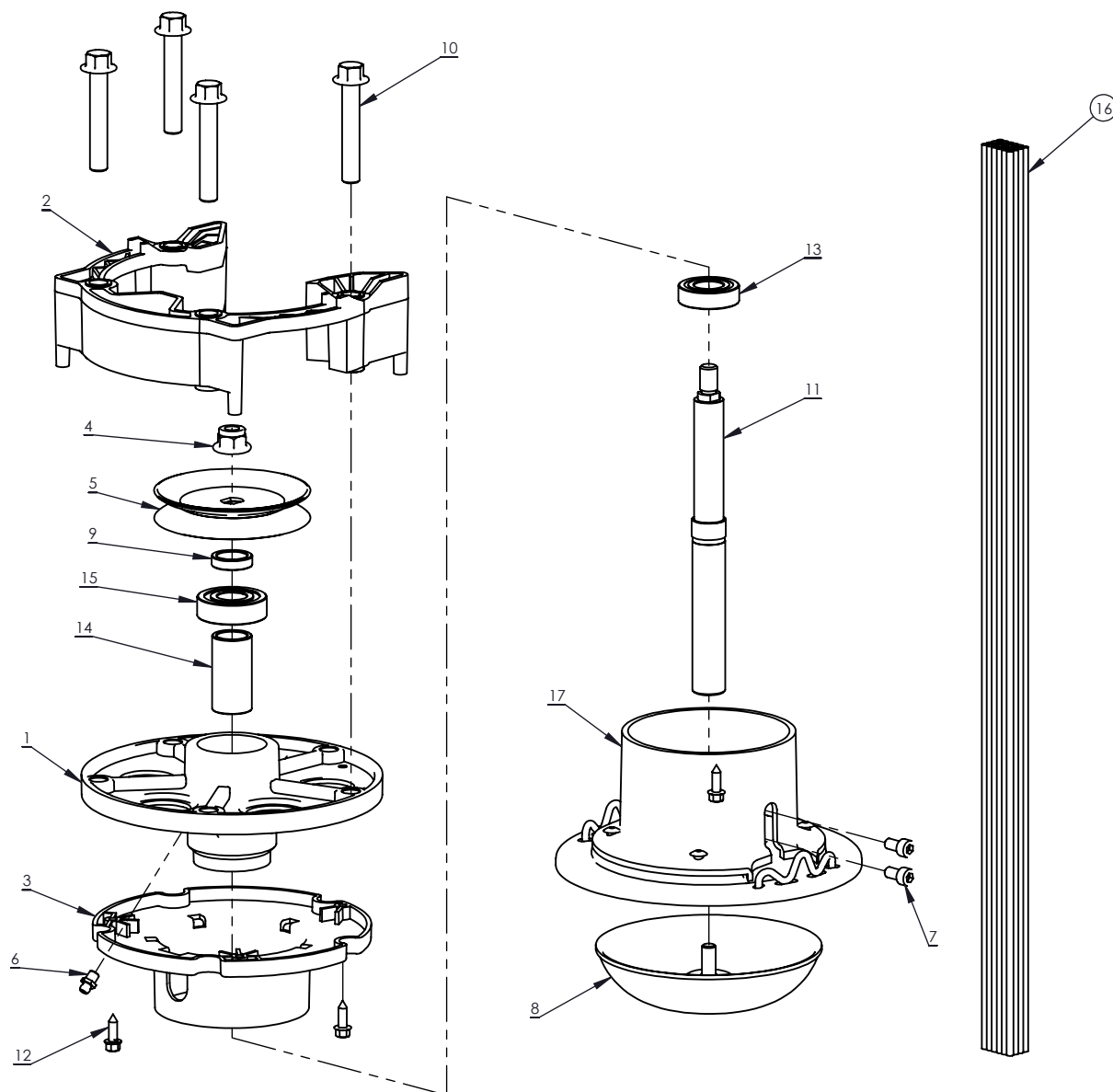


www.getearthquake.com - (800) 345-6007

© 2021 Ardisam, Inc.
All Rights Reserved
Tous droits réservés
P/N: 46038
SVC: SVC05704
ECN: 14456
REV 1: 2023-11-16

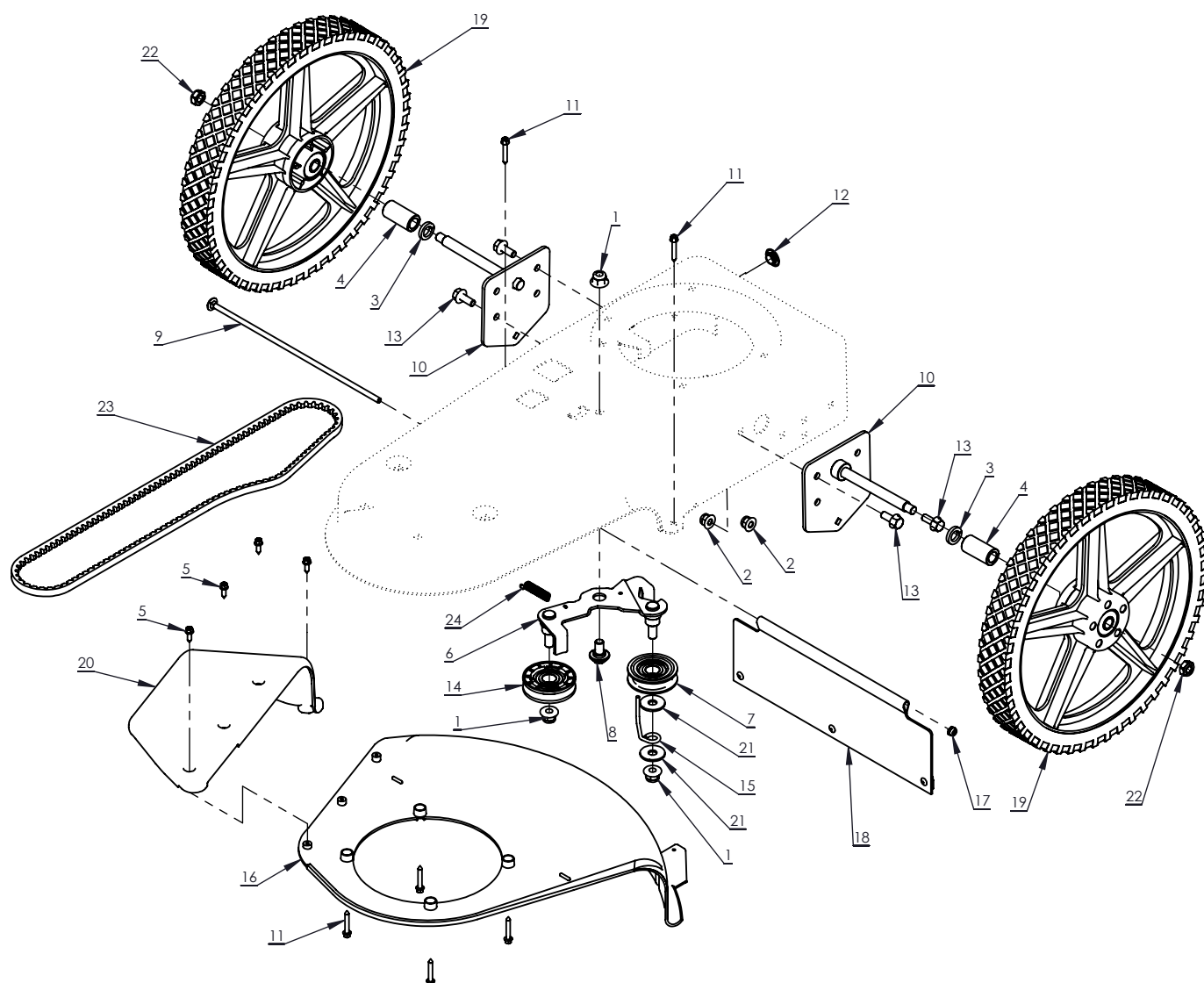


THIS INSTRUCTION BOOKLET CONTAINS IMPORTANT SAFETY INFORMATION. PLEASE READ AND KEEP FOR FUTURE REFERENCE.
CE LIVRET D'INSTRUCTIONS CONTIENT DES INFORMATIONS IMPORTANTES SUR LA SÉCURITÉ. VEUILLEZ LE LIRE ET LE CONSERVER POUR TOUTE CONSULTATION EXTÉRIEURE.



REF./ REP.	PART NO. /° RÉF.	DESCRIPTION	QTY. /QTÉ
1	16317	SPINDLE HOUSING	1
2	16318	SPINDLE SPACER	1
3	16337	WEED WRAP PREVENTER	1
4	16391	NUT M10	1
5	16595	PULLEY DOUBLE D HUB	1
6	16598	GREASE ZERK	1
7	19919	BOLT M6 X 12	2
8	19923	MOW BALL	1
9	19925	SPACER 17.5 X 6	1

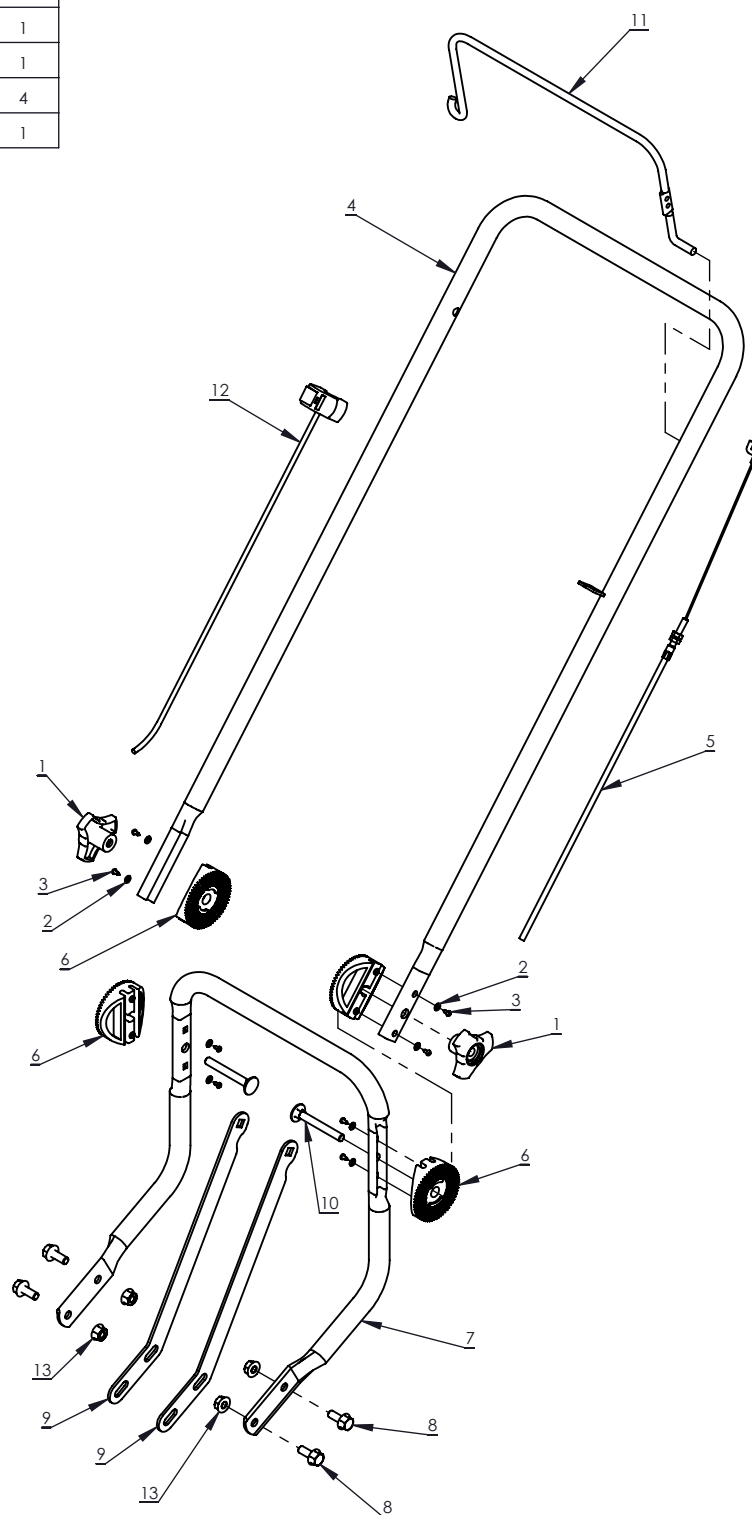
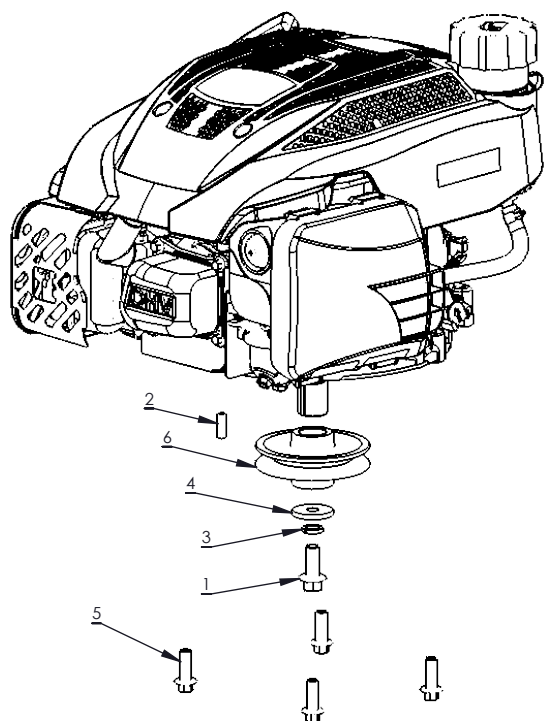
REF./ REP.	PART NO. /° RÉF.	DESCRIPTION	QTY. /QTÉ
10	19927	BOLT M10 X 60	4
11	19928	CUTTING HEAD SHAFT	1
12	19931	SCREW M5 X 15	3
13	19959	BALL BEARING 17 X 35	1
14	19960	SPACER 17.5 X 44	1
15	19966	BALL BEARING 17 X 40	1
16	21884	TRIMMER LINE 24 COUNT	1
17	38736	CUTTING HEAD	1



REF./ REP.	PART NO. /° RÉF.	DESCRIPTION	QTY. /QTÉ
1	16391	NUT M10	3
2	16400	NUT M8	4
3	18898	WASHER M14	2
4	19904	SPACER 14 X 43	2
5	19931	SCREW M5 X 15	4
6	19932	IDLER ENGAGEMENT ARM	1
7	19934	IDLER PULLEY SMOOTH NYLON	1
8	19936	BOLT M10 SHOULDER	1
9	19937	BOLT M6 X 285 CARRIAGE	1
10	19938	AXEL 106	2
11	19940	SCREW M5 X 30	6

REF./ REP.	PART NO. /° RÉF.	DESCRIPTION	QTY. /QTÉ
12	19944	GROMMET 12 X 23	1
13	19945	BOLT M8 X 20	4
14	19968	IDLER PULLEY V GROOVE NYLON	1
15	25038	BELT GUIDE	1
16	35817	MOWER SHIELD	1
17	37433	6MM LOCKNUT	1
18	38485	WEIGHTED REAR FLAP	1
19	38491	14 IN GREY WHEEL	2
20	41112	DISCHARGE CHUTE	1
21	41161	WASHER M10	2
22	41235	NUT M10	2
23	60005003	V BELT 3L	1
24	60005008	SPRING EXTENSION	1

REF./ REP.	PART NO. /° RÉF.	DESCRIPTION	QTY. /QTE
1	16510	BOLT 3/8 X 1.0 IN	1
2	16602	KEY 4 X 5	1
3	30697	3/8 LOCK WASHER	1
4	331040	WASHER M10 X 32	1
5	35893	BOLT M8 X 25	4
6	38147	PULLEY 3L X 75MM	1



REF./ REP.	PART NO. /° RÉF.	DESCRIPTION	QTY. /QTE
1	13601	BLACK HAND KNOB	2
2	16360	WASHER M3	8
3	16397	SCREW M3 X 10	8
4	17526	UPPER HANDLEBAR	1
5	17527	ENGAGEMENT CABLE	1
6	19912	ANGLE ADJUSTMENT DISC	4
7	19941	LOWER HANDLEBAR	1
8	19945	BOLT M8 X 20	4
9	27683	HANDLEBAR BRACE	2
10	27800	CARRIAGE BOLT M8 X 65	2
11	37807	BLACK LEVER	1
12	41204	IGNITION SWITCH	1
13	64132	NUT M8	4