

Groundbreaking Power Equipment

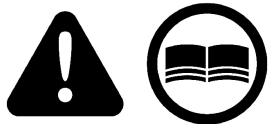
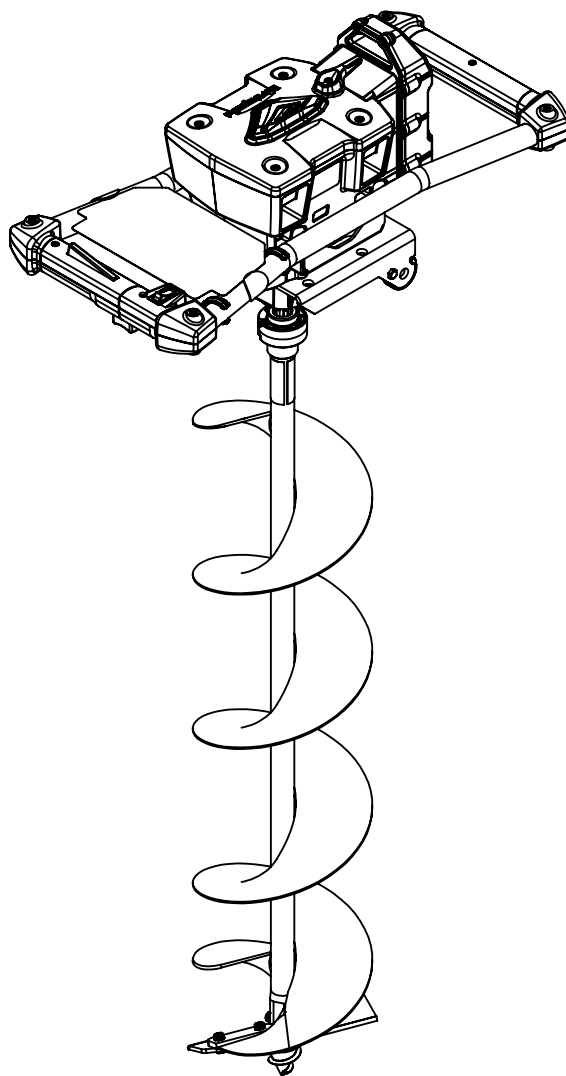
Illustrated Parts Breakdown
Illustration des pièces détachées

**Model Number,
Numéros de modèle :**
44977

ENGLISH

FRANÇAIS

S/N



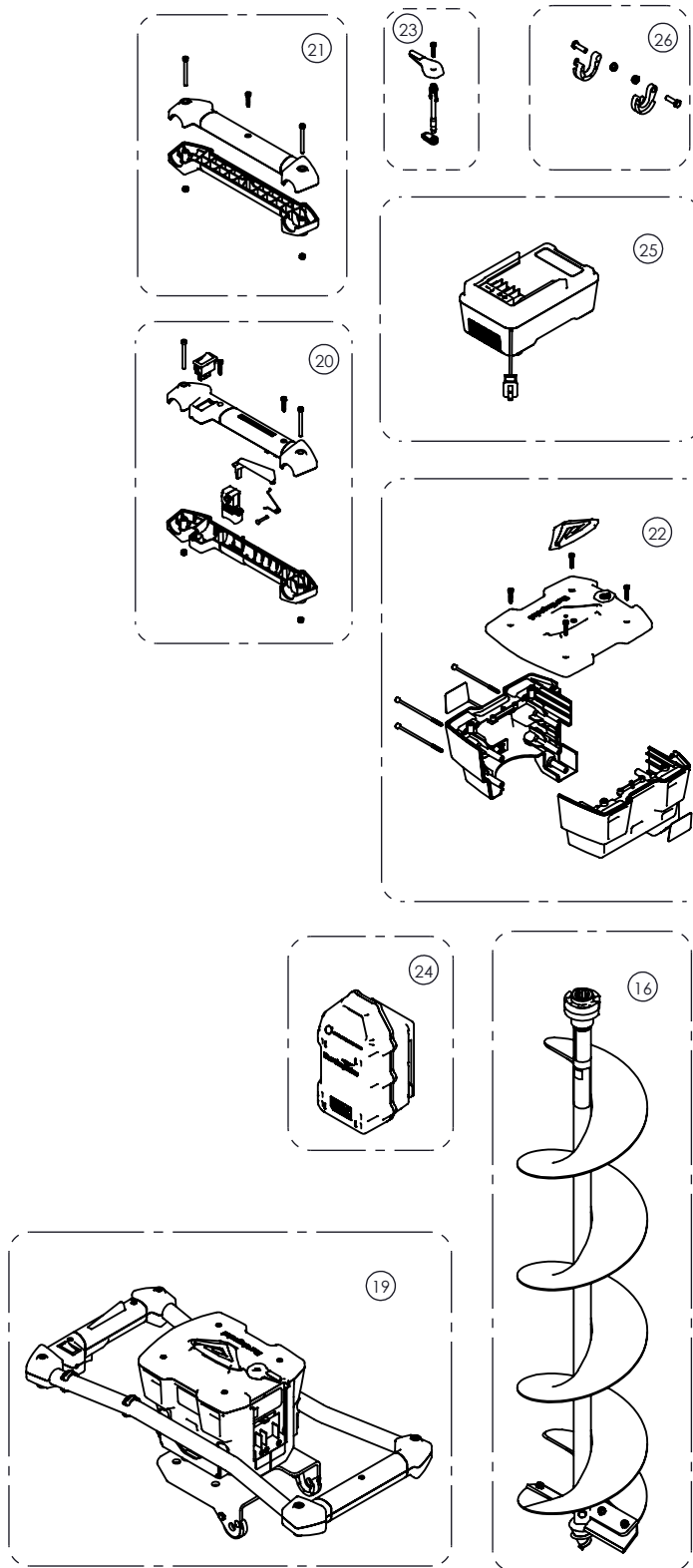
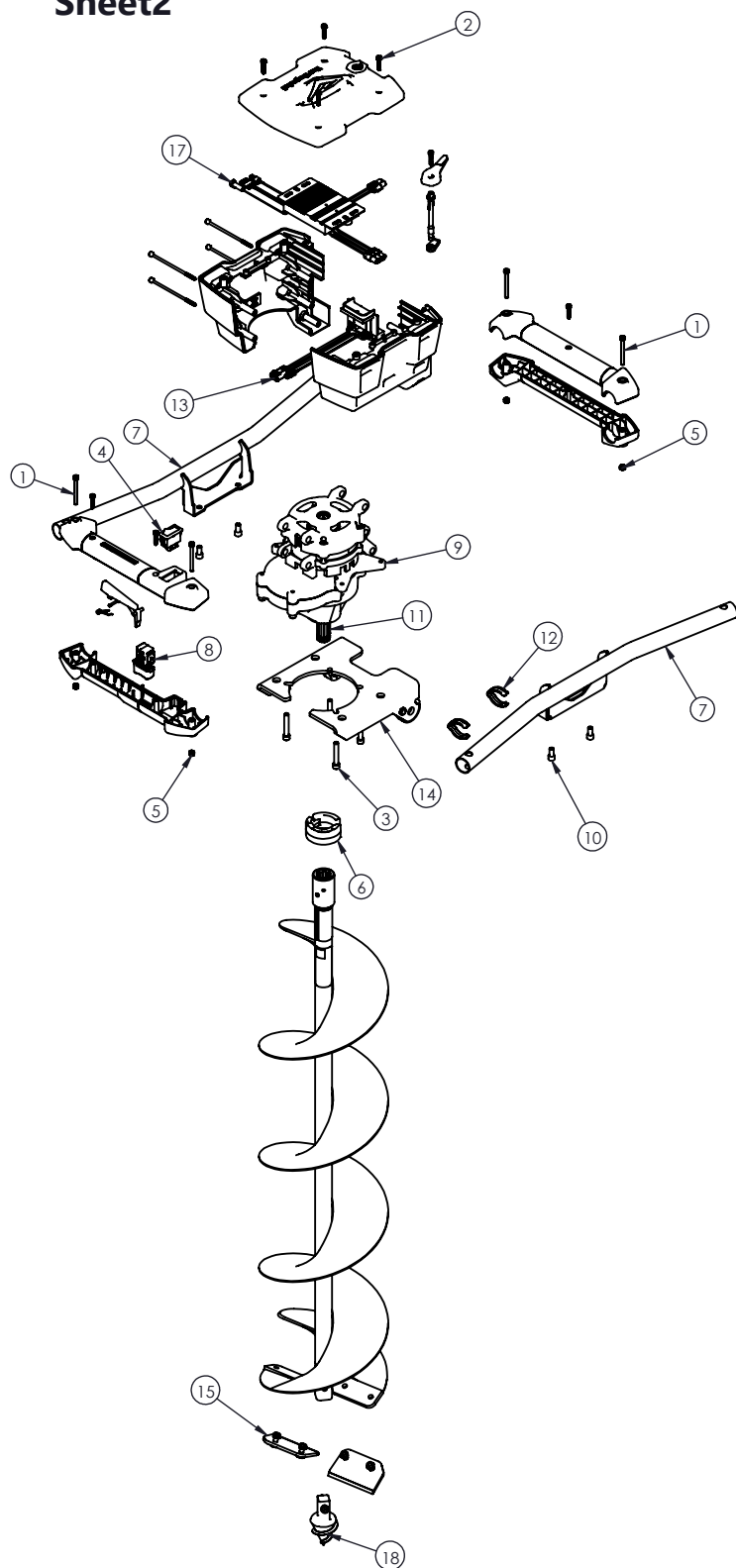
www.getearthquake.com - (800) 345-6007

© 2024 Ardisam, Inc.
All Rights Reserved
Tous droits réservés
P/N: 48643
SVC: 05763
ECN: 14371
REV 1: 2024-08-08



THIS INSTRUCTION BOOKLET CONTAINS IMPORTANT SAFETY INFORMATION. PLEASE READ AND KEEP FOR FUTURE REFERENCE.
CE LIVRET D'INSTRUCTIONS CONTIENT DES INFORMATIONS IMPORTANTES SUR LA SÉCURITÉ. VEUILLEZ LE LIRE ET LE CONSERVER POUR TOUTE CONSULTATION EXTÉRIEURE.

Sheet2





REF./ REP.	PART NO. /° RÉF.	DESCRIPTION	QTY. /QTÉ
1	33971	BOLT M4 X 45MM	4
2	33974	SCREW 4 X 20MM SELF THREADING	4
3	34277	BOLT 1/4-20 X 1-1/2	4
4	40661	REVERSE SWITCH	1
5	41489	NUT M4 NYLOCK	4
6	43771	EARTH AUGER QUICK COUPLER 2 PACK	1
7	45302	HANDLE BAR TUBE WELDMENT	2
8	45310	VARIABLE SPEED SWITCH ASSEMBLY	1
9	45313	MOTOR AND GEARBOX 60V EARTH AUGER	1
10	45539	BOLT 1/4 X 1/2 INCH	4
11	45708	OUTPUT SHAFT SPLINED	1
12	45794	WIRE CLIP	2
13	45835	TERMINAL BLOCK BATTERY CONNECTION	1
14	46499	TORQUE REDUCTION MOUNTING BRACKET	1
15	46765	REPLACEMENT BLADES	1
16	46838	8 INCH EARTH AUGER ASSEMBLY	1
17	46846	MOTOR CONTROLLER ASSEMBLY	1
18	47404	REPLACEMENT CENTER POINT	1
19	47514	POWERHEAD ASSEMBLY	1
20	47515	GRIP ASSEMBLY TRIGGER SIDE	1
21	47516	GRIP ASSEMBLY LEFT HAND	1
22	47517	HOUSING ASSEMBLY WITH HARDWARE	1
23	47518	LOCKING LEVER ASSEMBLY	1
24	47573	BATTERY 60V 4AH	1
25	47578	CHARGER 60V 2AMP	1
26	48333	TORQUE REDUCTION CRADLES	1