



YARDBIRD®

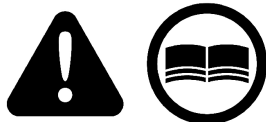
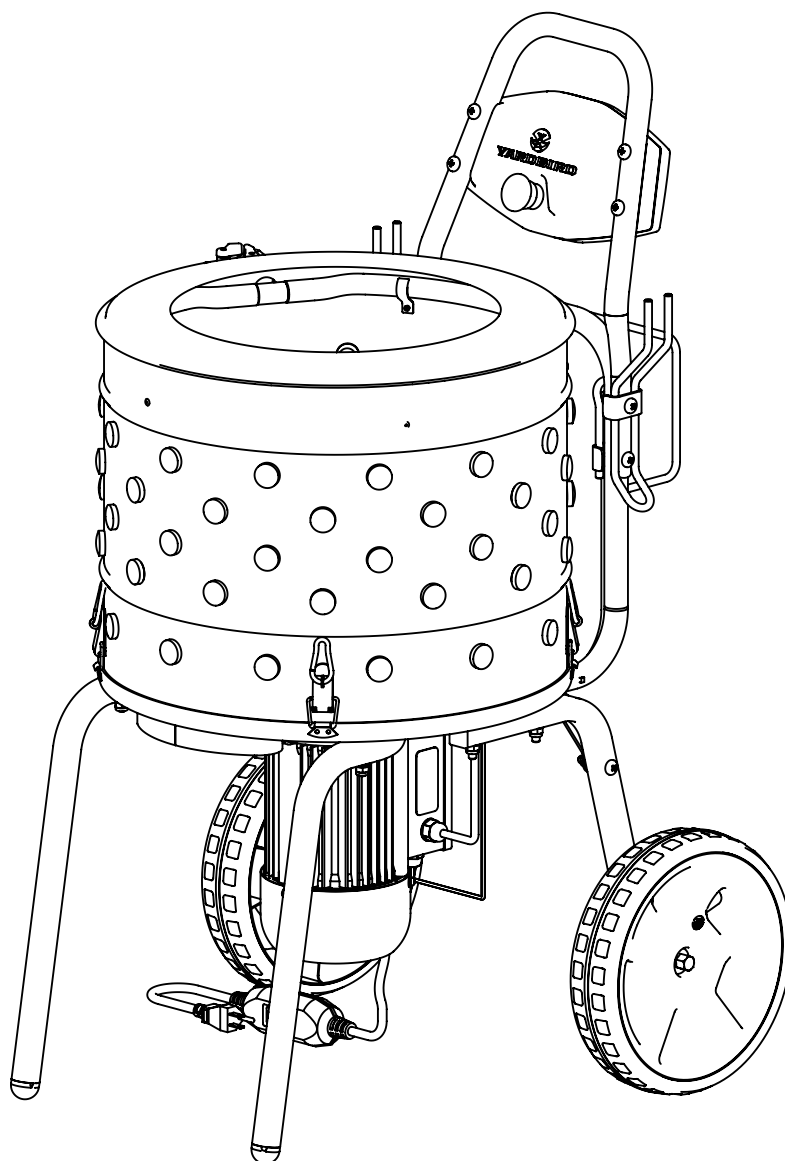
Illustrated Parts Breakdown
Illustration des pièces détachées

**Model Number,
Numéros de modèle :**
44204

ENGLISH

FRANÇAIS

S/N



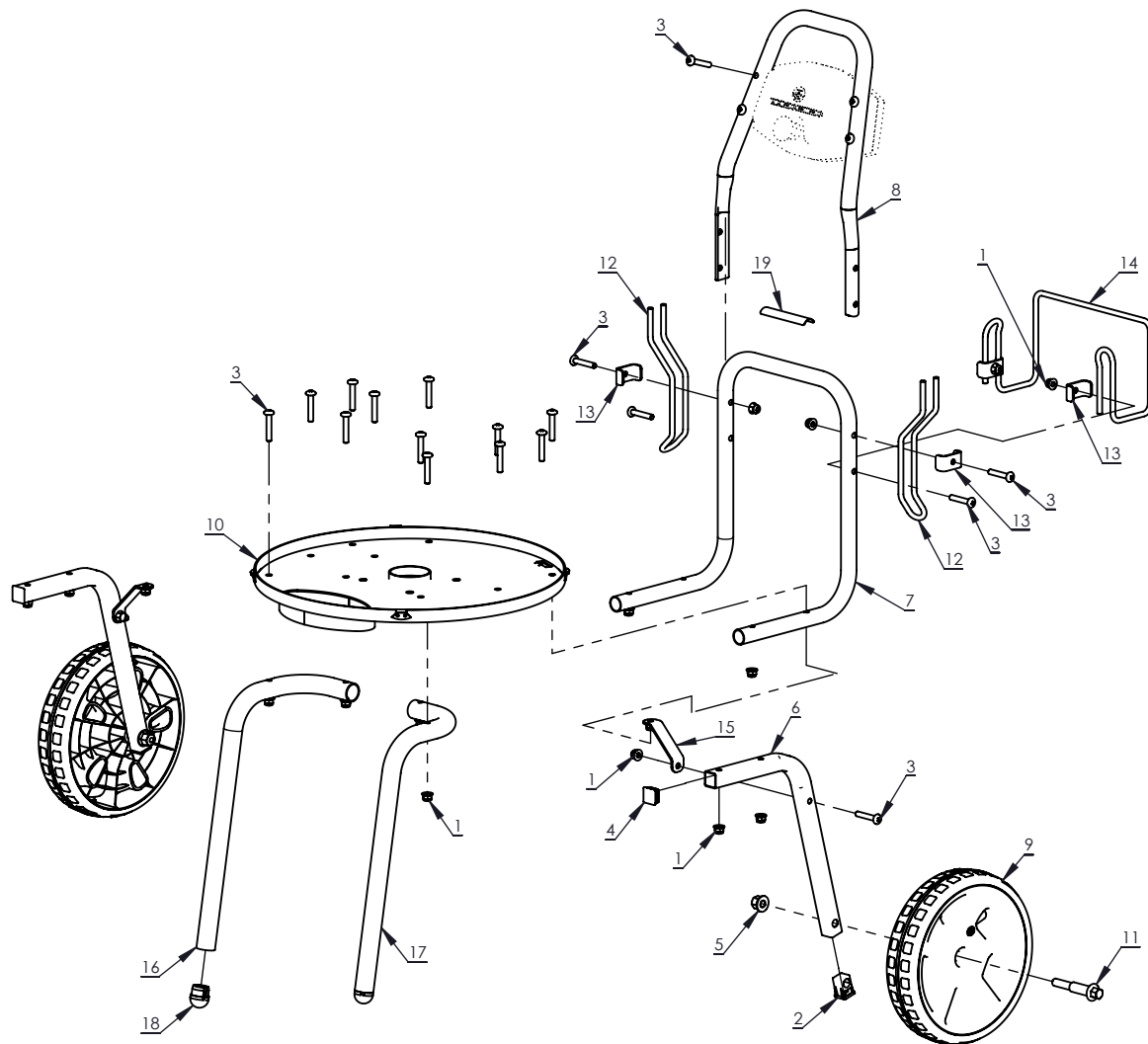
www.yardbirdpluckers.com - (800) 345-6007

© Ardisam, Inc.
All Rights Reserved
Tous droits réservés
P/N: 46185
SVC: 05762
ECN: 13684
REV1: 2024-05-30



THIS INSTRUCTION BOOKLET CONTAINS IMPORTANT SAFETY INFORMATION. PLEASE READ AND KEEP FOR FUTURE REFERENCE.
CE LIVRET D'INSTRUCTIONS CONTIENT DES INFORMATIONS IMPORTANTES SUR LA SÉCURITÉ. VEUILLEZ LE LIRE ET LE CONSERVER POUR TOUTE CONSULTATION EXTÉRIEURE.

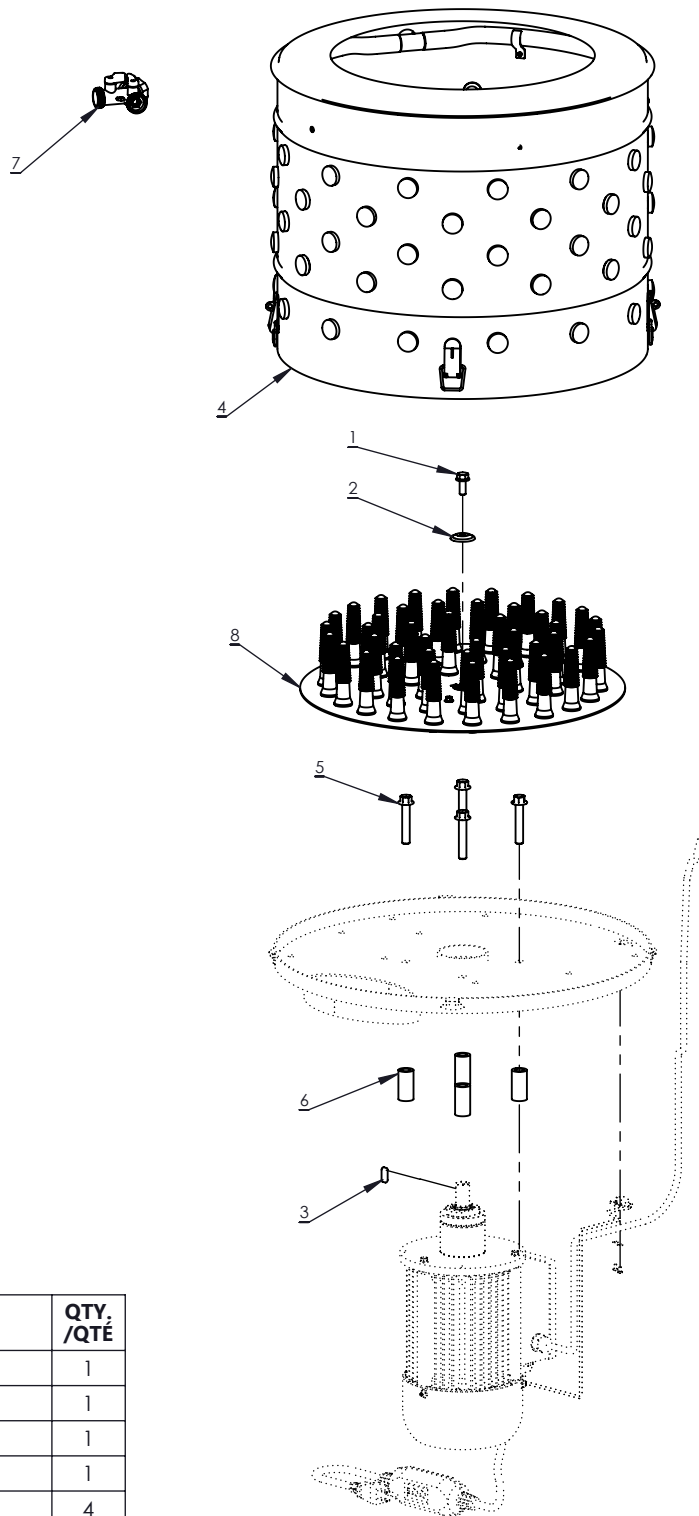
CHASSIS GROUP



REF./ REP.	PART NO. /° RÉF.	DESCRIPTION	QTY. /QTÉ
1	16400	NUT M8	18
2	20056	LEG WHEEL PLUG	2
3	24032	BOLT M8 X 45	22
4	30600	SQUARE PLUG	2
5	41340	NUT M12	2
6	42353	WHEEL LEG	2
7	42354	LOWER HANDLE MOUNT	1
8	42355	HANDLE	1
9	42789	WHEEL	2
10	44209	CHASSIS PLATE	1

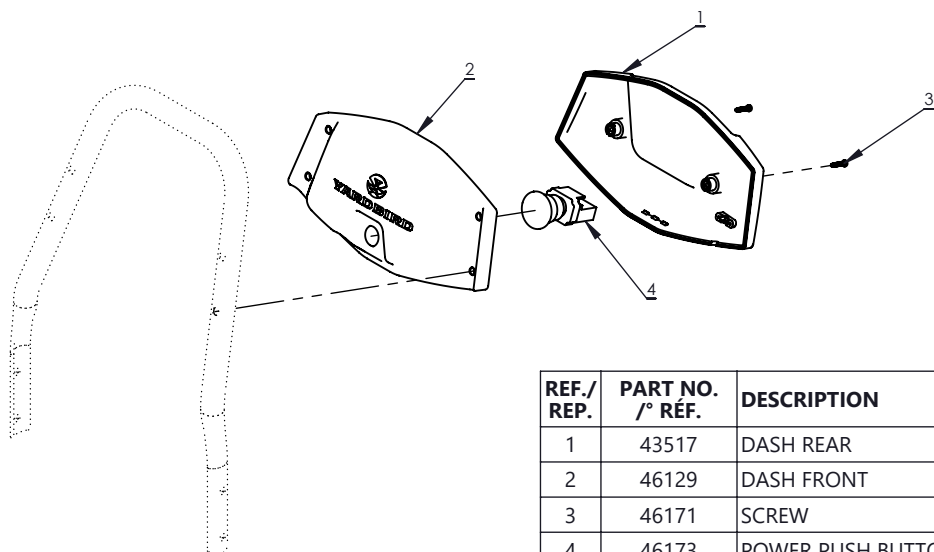
REF./ REP.	PART NO. /° RÉF.	DESCRIPTION	QTY. /QTÉ
11	44214	WHEEL BOLT	2
12	44225	CORD WRAP	2
13	44226	CLIP	4
14	44227	HOSE WRAP	1
15	44265	SUPPORT BRACKET	2
16	45697	FRONT LEG RIGHT	1
17	45698	FRONT LEG LEFT	1
18	46148	LEG FOOT	2
19	46158	SAFETY WARNING DECAL	1

DRIVEN GROUP

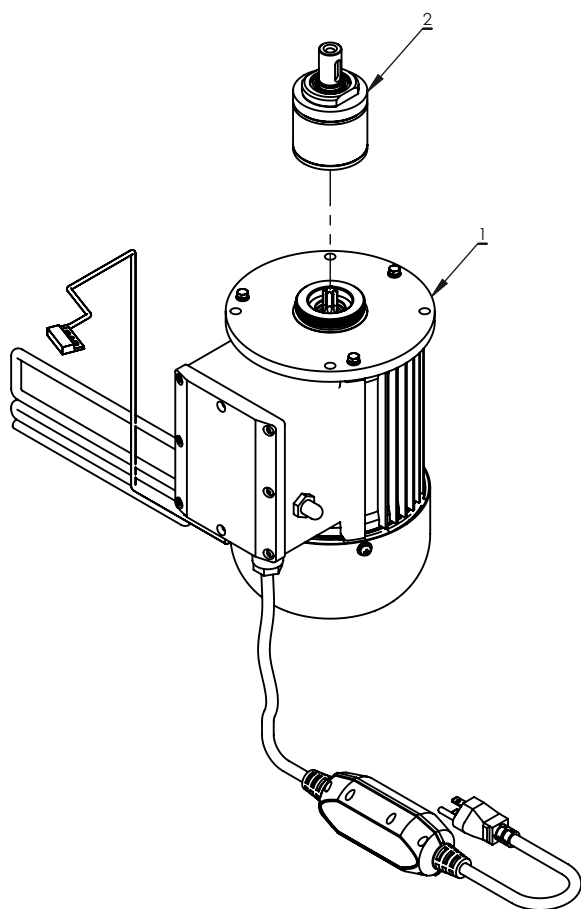


REF./ REP.	PART NO. /° RÉF.	DESCRIPTION	QTY. /QTÉ
1	18106	BOLT M8 X 20	1
2	23840	DOME WASHER M8	1
3	25847	KEY	1
4	41934	TUB COMPLETE	1
5	44301	BOLT M10 X 55	4
6	44302	SPACER	4
7	46151	WYE VALVE	1
8	46152	FEATHER PLATE ASSEM WITH HUB	1

DASH & DRIVE GROUP

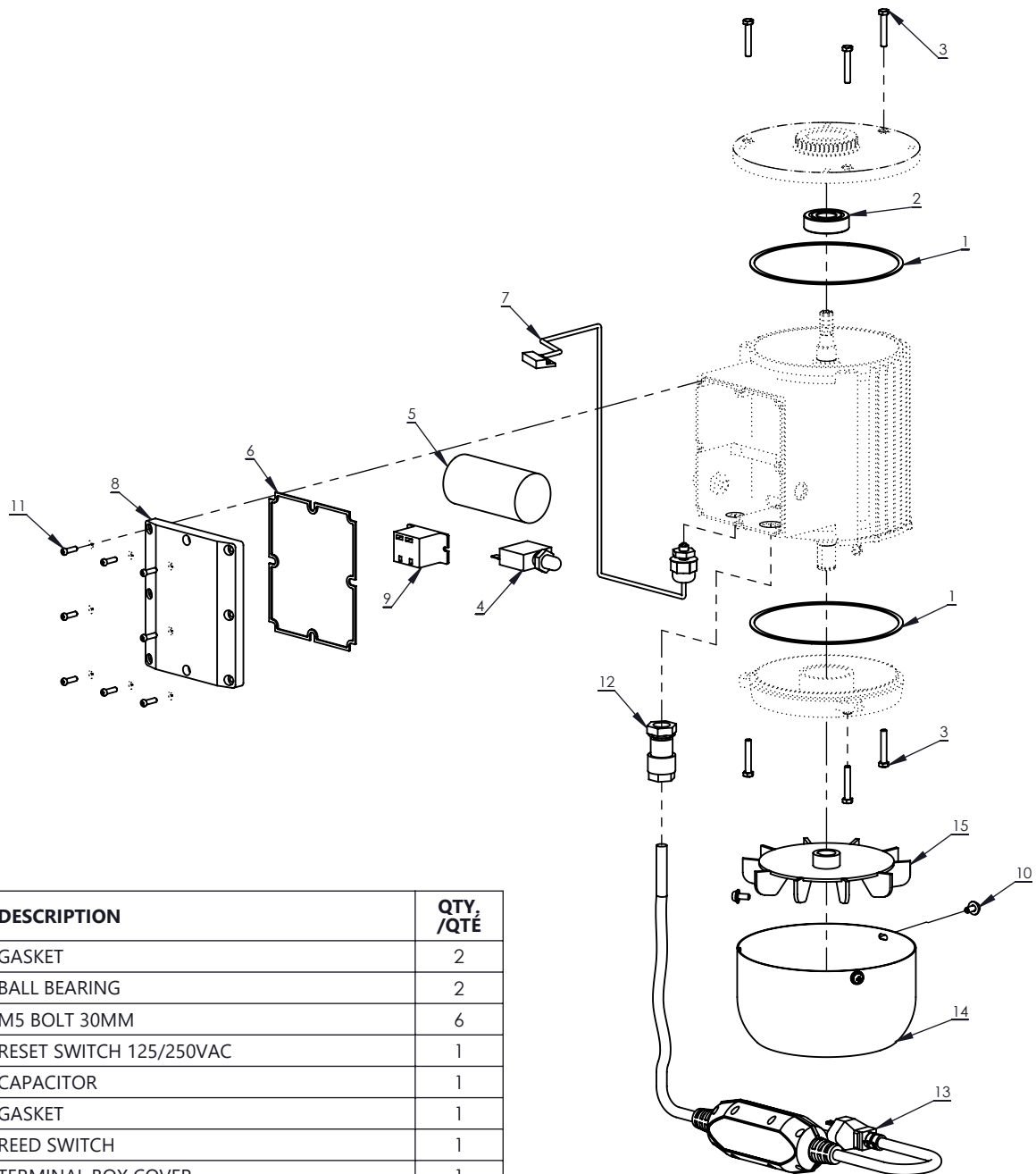


REF./ REP.	PART NO. /° RÉF.	DESCRIPTION	QTY. /QTÉ
1	43517	DASH REAR	1
2	46129	DASH FRONT	1
3	46171	SCREW	2
4	46173	POWER PUSH BUTTON	1



REF./ REP.	PART NO. /° RÉF.	DESCRIPTION	QTY. /QTÉ
1	46174	MOTOR ASSEMBLY	1
2	46239	GEARBOX, INCLUDES O-RING AND GREASE	1

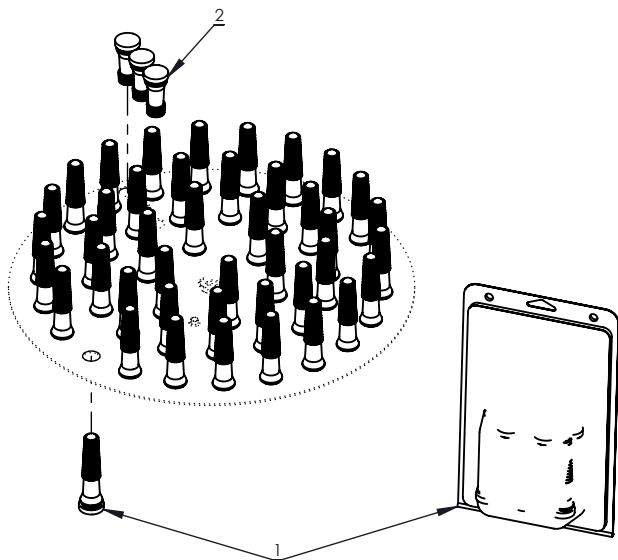
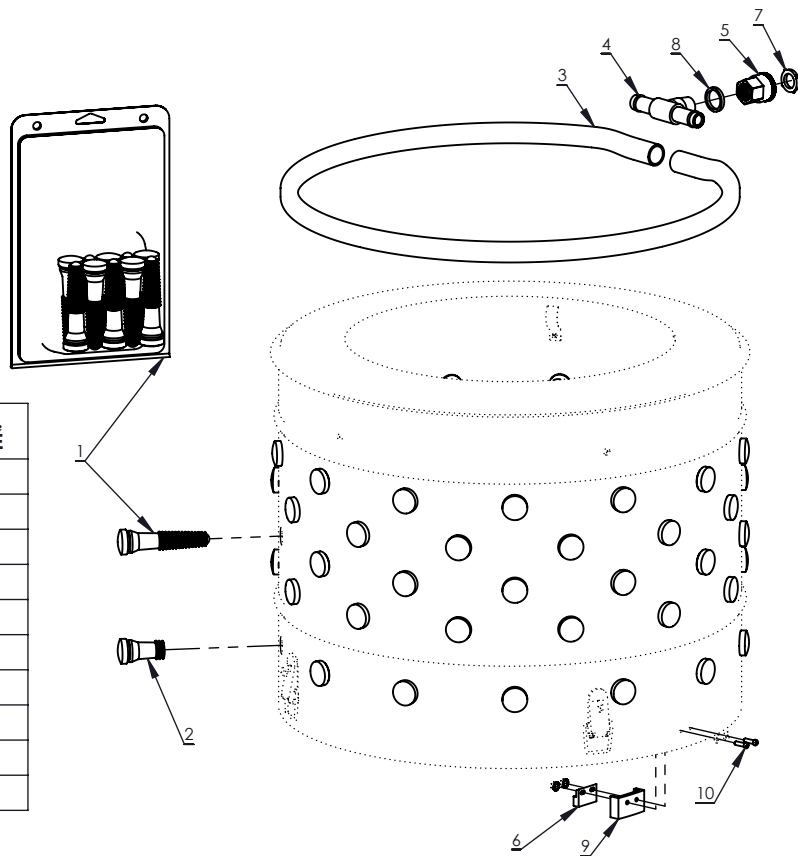
MOTOR



REF./ REP.	PART NO. /° RÉF.	DESCRIPTION	QTY. /QTÉ
1	23121	GASKET	2
2	23131	BALL BEARING	2
3	24004	M5 BOLT 30MM	6
4	24008	RESET SWITCH 125/250VAC	1
5	24009	CAPACITOR	1
6	24012	GASKET	1
7	24014	REED SWITCH	1
8	24015	TERMINAL BOX COVER	1
9	24076	30 AMP RELAY	1
10	3250	BOLT M5 X 12	3
11	32855	BOLT M4 X 14	8
12	32962	STRAIN RELIEF CONDUIT	1
13	45106	POWER CORD AND GFCI	1
14	W1200202	FAN SHROUD	1
15	W1200236	1200W MOTOR FAN	1

TUB & FEATHER PLATE

REF./ REP.	PART NO. /° RÉF.	DESCRIPTION	QTY. /QTÉ
1	22575	FINGER REPLACEMENT 10 PACK	52
2	22697	FINGER 40MM	13
3	23632	IRRIGATION RING	1
4	23649	TEE HOSE FITTING	1
5	23844	GARDEN HOSE FITTING	1
6	23846	MAGNET	1
7	23924	GARDEN HOSE GASKET	1
8	23925	RUBBER SPACER	1
9	24082	MAGNET SPACER	1
10	32855	BOLT M4 X 14	2



REF./ REP.	PART NO. /° RÉF.	DESCRIPTION	QTY. /QTÉ
1	22575	FINGER REPLACEMENT 10 PACK	43
2	25897	FINGER 56 MM	3