

Groundbreaking Power Equipment

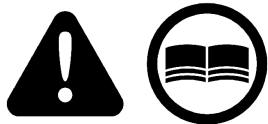
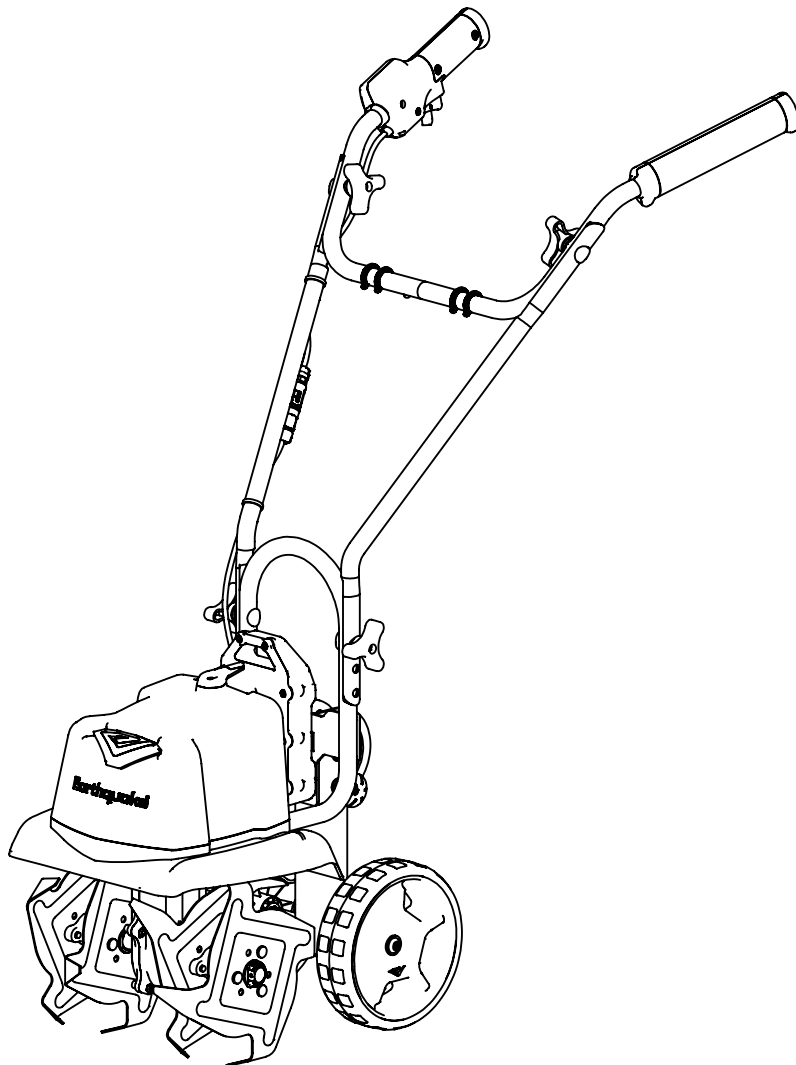
Illustrated Parts Breakdown  
Illustration des pièces détachées

**Model Number,  
Numéros de modèle :**  
**46091**

ENGLISH

FRANÇAIS

S/N



[www.getearthquake.com](http://www.getearthquake.com) - (800) 345-6007

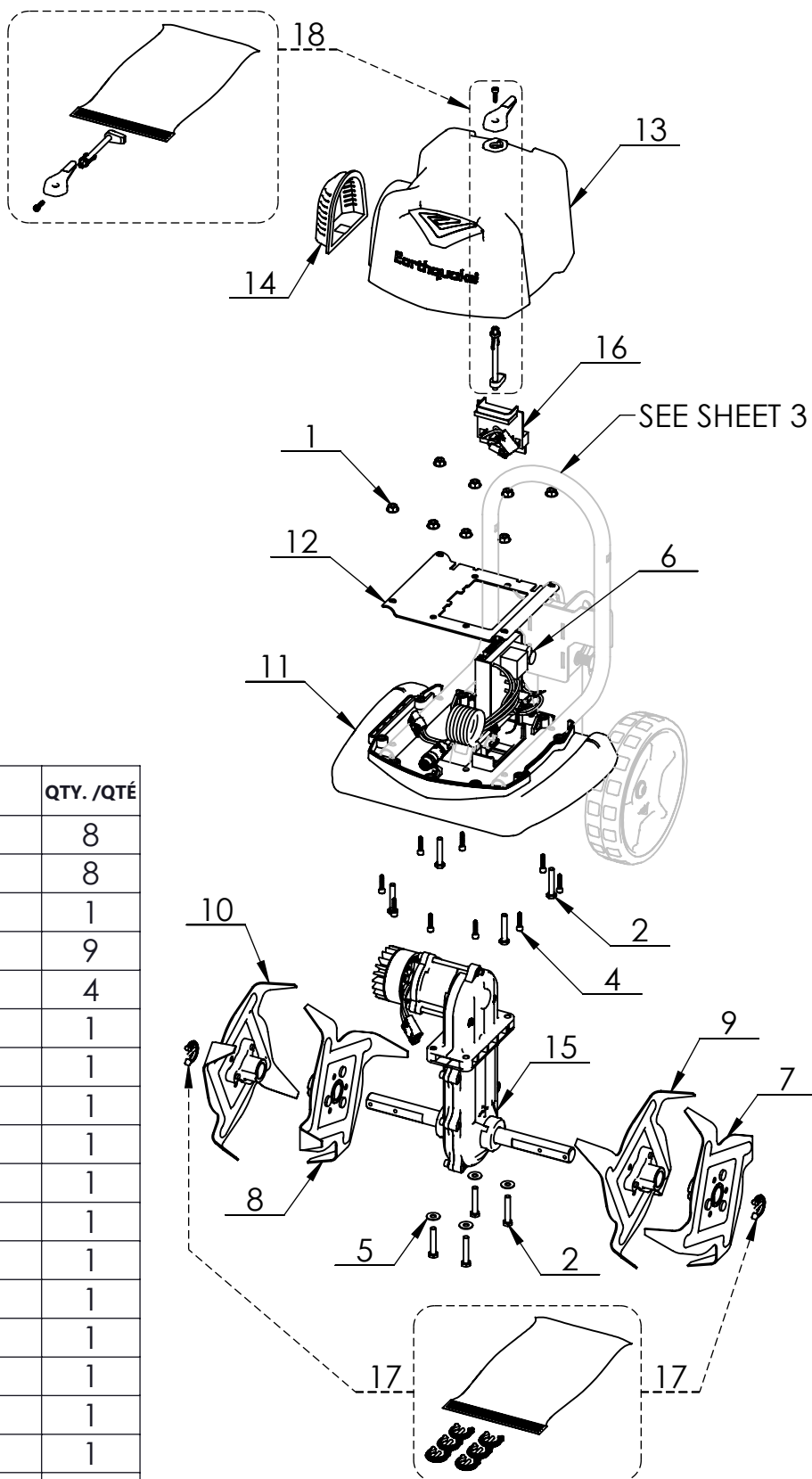
© 2024 Ardisam, Inc.  
All Rights Reserved  
Tous droits réservés  
P/N: 50191  
SVC: SVC05802  
ECN: 14298  
REV 1: 2025-01-29



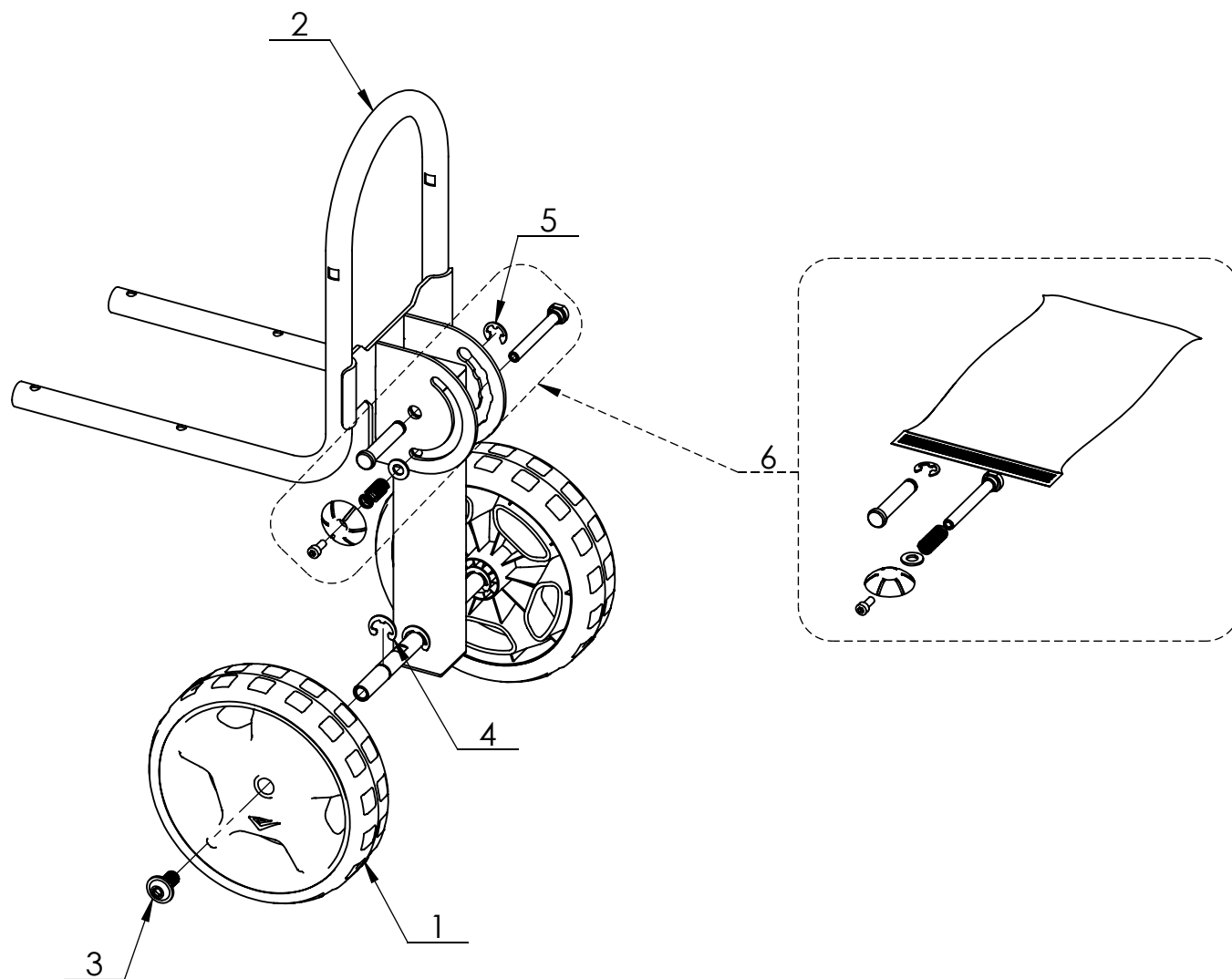
THIS INSTRUCTION BOOKLET CONTAINS IMPORTANT SAFETY INFORMATION. PLEASE READ AND KEEP FOR FUTURE REFERENCE.  
CE LIVRET D'INSTRUCTIONS CONTIENT DES INFORMATIONS IMPORTANTES SUR LA SÉCURITÉ. VEUILLEZ LE LIRE ET LE CONSERVER POUR TOUTE CONSULTATION EXTÉRIEURE.

## POWERHEAD ASSEMBLY

REF./ REP.	PART NO. /° RÉF.	DESCRIPTION	QTY. /QTÉ
1	14109	NUT M6	8
2	18104	BOLT M6 X 35	8
3	30995	EARTHQUAKE BADGE	1
4	33974	SCREW M4 X 20	9
5	41710	WASHER M6 X 16	4
6	45626	60V CONTROLLER	1
7	4601	TINE (A)	1
8	4602	TINE (C)	1
9	4603	TINE (B)	1
10	4604	TINE (D)	1
11	46098	TINE SHIELD	1
12	46099	HANDLEBAR PLATE MOUNT	1
13	46103	POWERHEAD HOUSING	1
14	46104	POWERHEAD HOUSING VENT	1
15	46268	60V MOTOR AND TRANSMISSION	1
16	46428	TERMINAL BLOCK	1
17	49227	TINE RETAINING CLIP (6 PACK)	1
18	49235	BATTERY LOCKING LUG AND LEVER	1

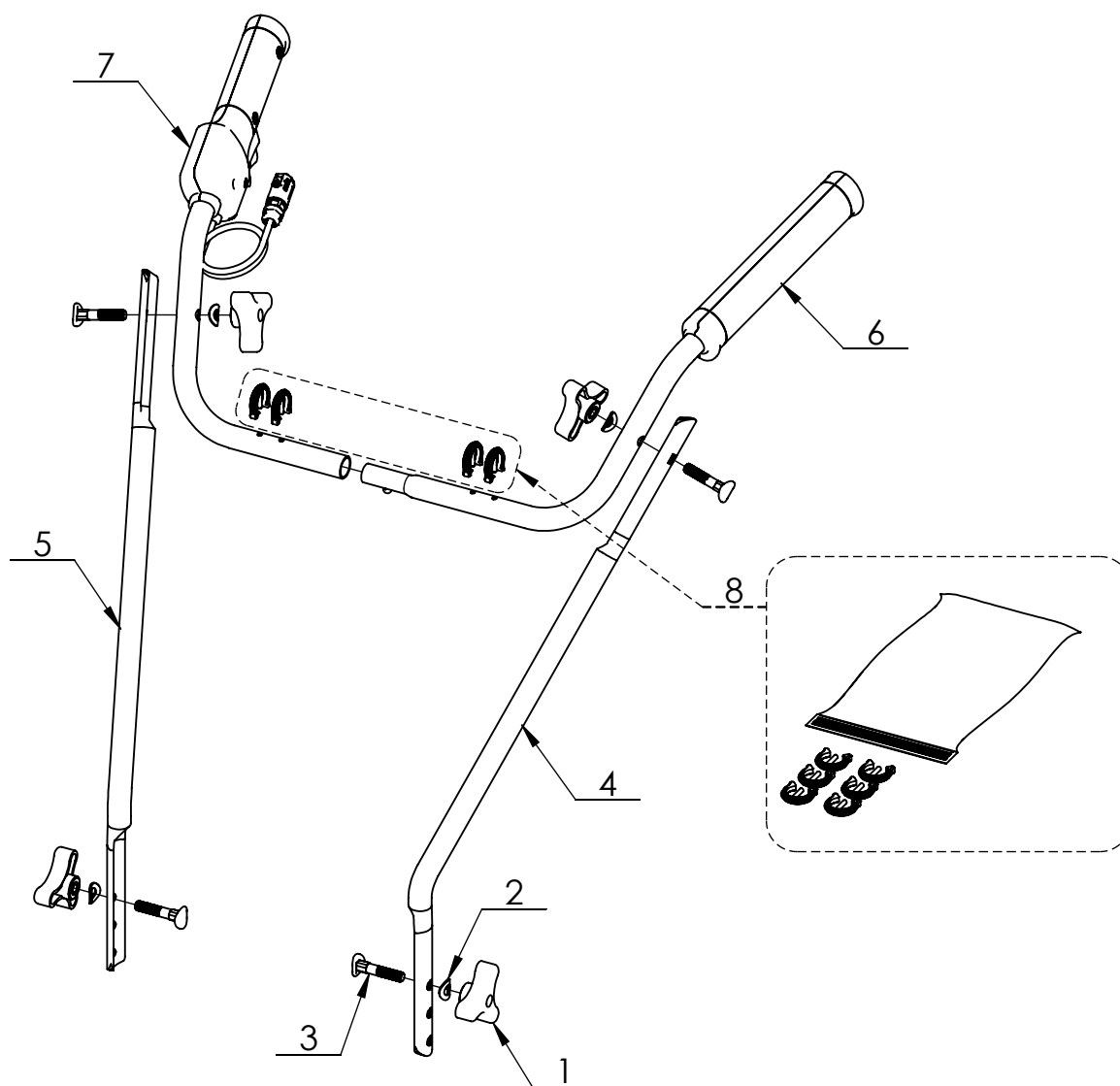


## CHASSIS ASSEMBLY



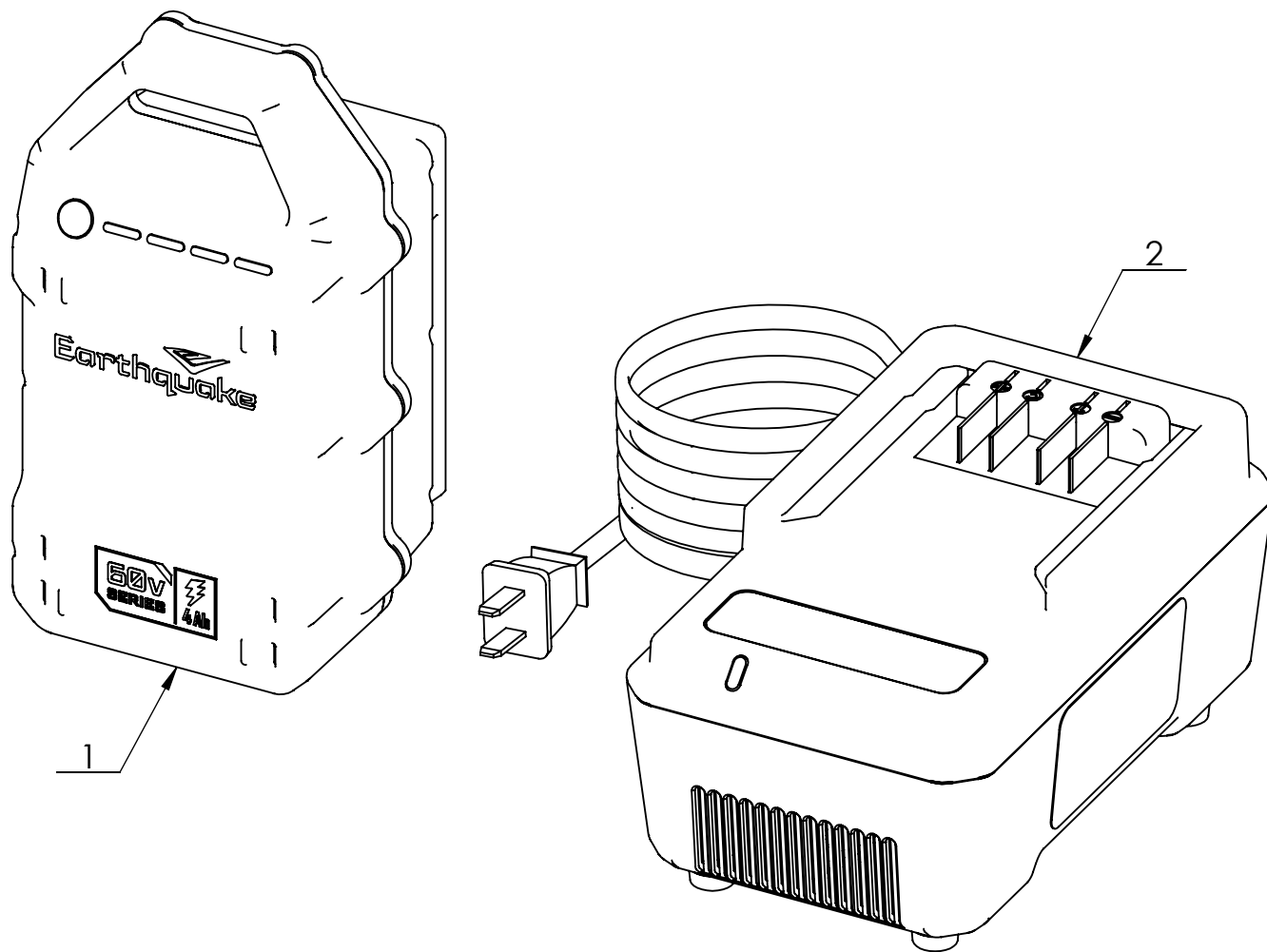
REF./ REP.	PART NO. /° RÉF.	DESCRIPTION	QTY. /QTÉ
1	30671	WHEEL	2
2	46108	HANDLEBAR LOWER	1
3	46119	BOLT M10 X 20	2
4	46294	SNAP E-RING 11 ID	4
5	46585	SNAP E-RING 9 ID	1
6	49233	WHEEL SET ADJUSTMENT HARDWARE	1

## HANDLEBAR ASSEMBLY



REF./ REP.	PART NO. /° RÉF.	DESCRIPTION	QTY. /QTÉ
1	25622	THREE LOBE HAND NUT M8	4
2	31560	SADDLE WASHER M8	4
3	31565	SADDLE BOLT M8 X 35	4
4	46092	HANDLEBAR MIDDLE LH	1
5	46093	HANDLEBAR MIDDLE RH	1
6	46963	HANDLEBAR UPPER LH	1
7	46964	HANDLEBAR UPPER RH WITH CONTROLS	1
8	49227	TINE RETAINING CLIP (6 PACK)	1

## BATTERY AND CHARGER



REF./ REP.	PART NO. /° RÉF.	DESCRIPTION	QTY. /QTÉ
1	47573	BATTERY 60V 4AH	1
2	47578	CHARGER 60V 2AMP	1