



Illustrated Parts Breakdown
Illustration des pièces détachées

Tazz™

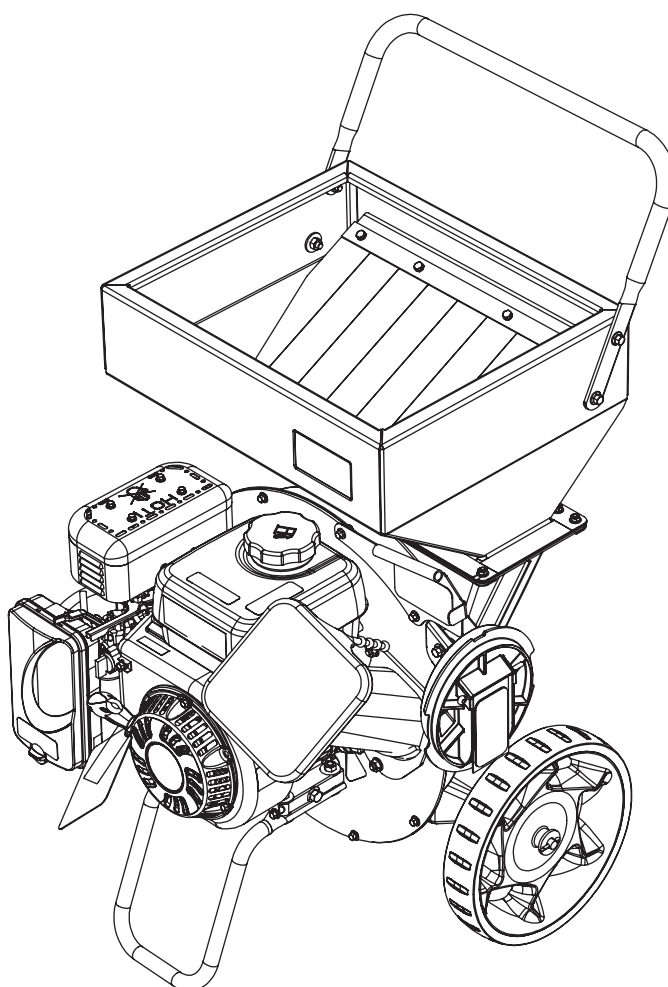
Viper® 212cc Chipper Shredder

**Model Number, Numéros de modèle :
35259**

ENGLISH

FRANÇAIS

S/N



Get parts or technical assistance online at

www.tazzoutdoorproducts.com or call (800) 345-6007

Pièces détachées et assistance technique en ligne à

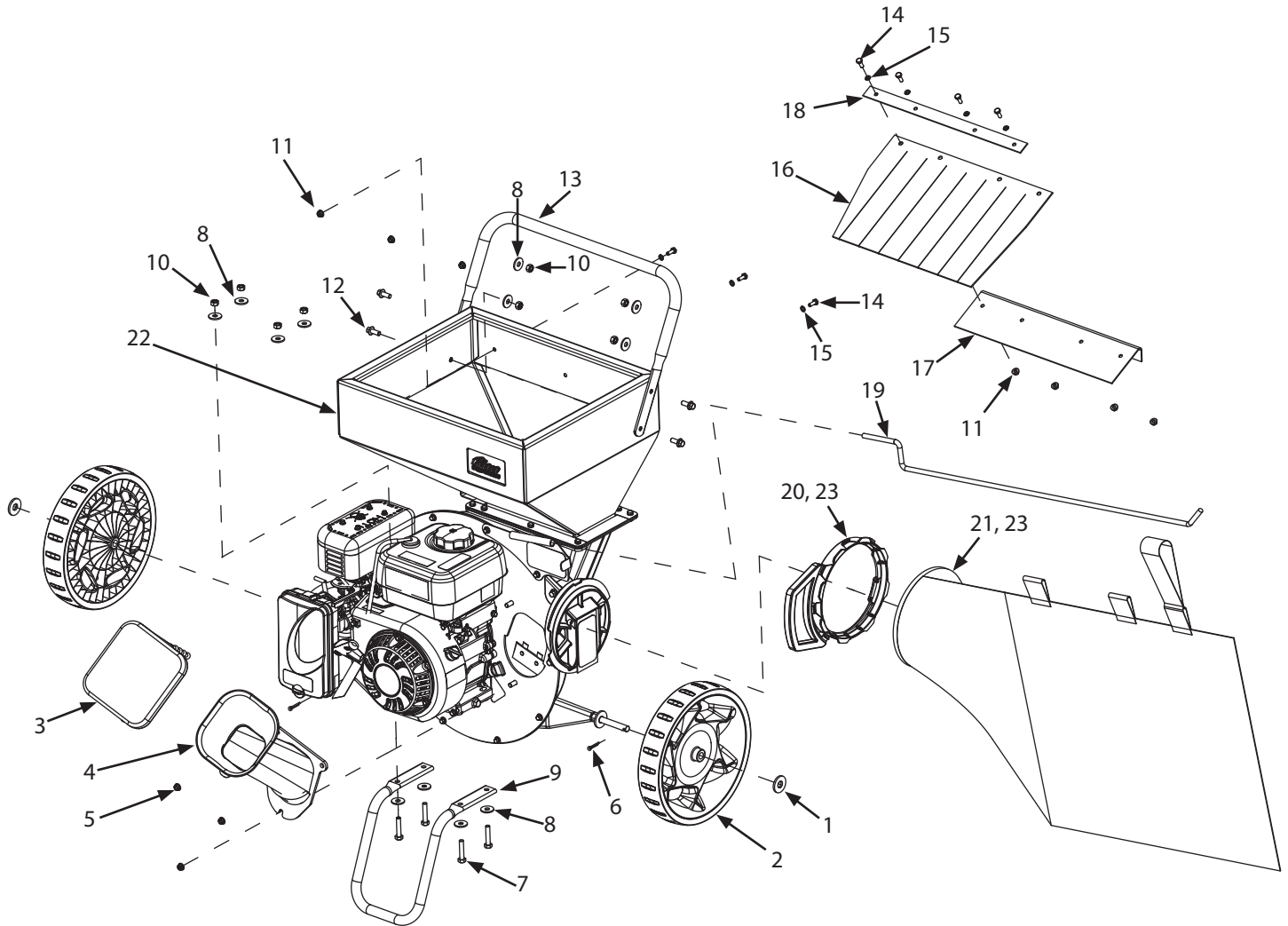
www.tazzoutdoorproducts.com ou composer le (800) 345-6007

© 2023 Ardisam
All Rights Reserved
Tous droits réservés
P/N: 35292
ECN: 14064
REV 2: 12/22/2022
SVC: 35280



THIS INSTRUCTION BOOKLET CONTAINS IMPORTANT SAFETY INFORMATION. PLEASE READ AND KEEP FOR FUTURE REFERENCE.
CE LIVRET D'INSTRUCTIONS CONTIENT DES INFORMATIONS IMPORTANTES SUR LA SÉCURITÉ. VEUILLEZ LE LIRE ET LE CONSERVER POUR TOUTE CONSULTATION EXTÉRIEURE.

ILLUSTRATED PARTS BREAKDOWN / ILLUSTRATION DES PIÈCES DÉTACHÉES - Main Explosion

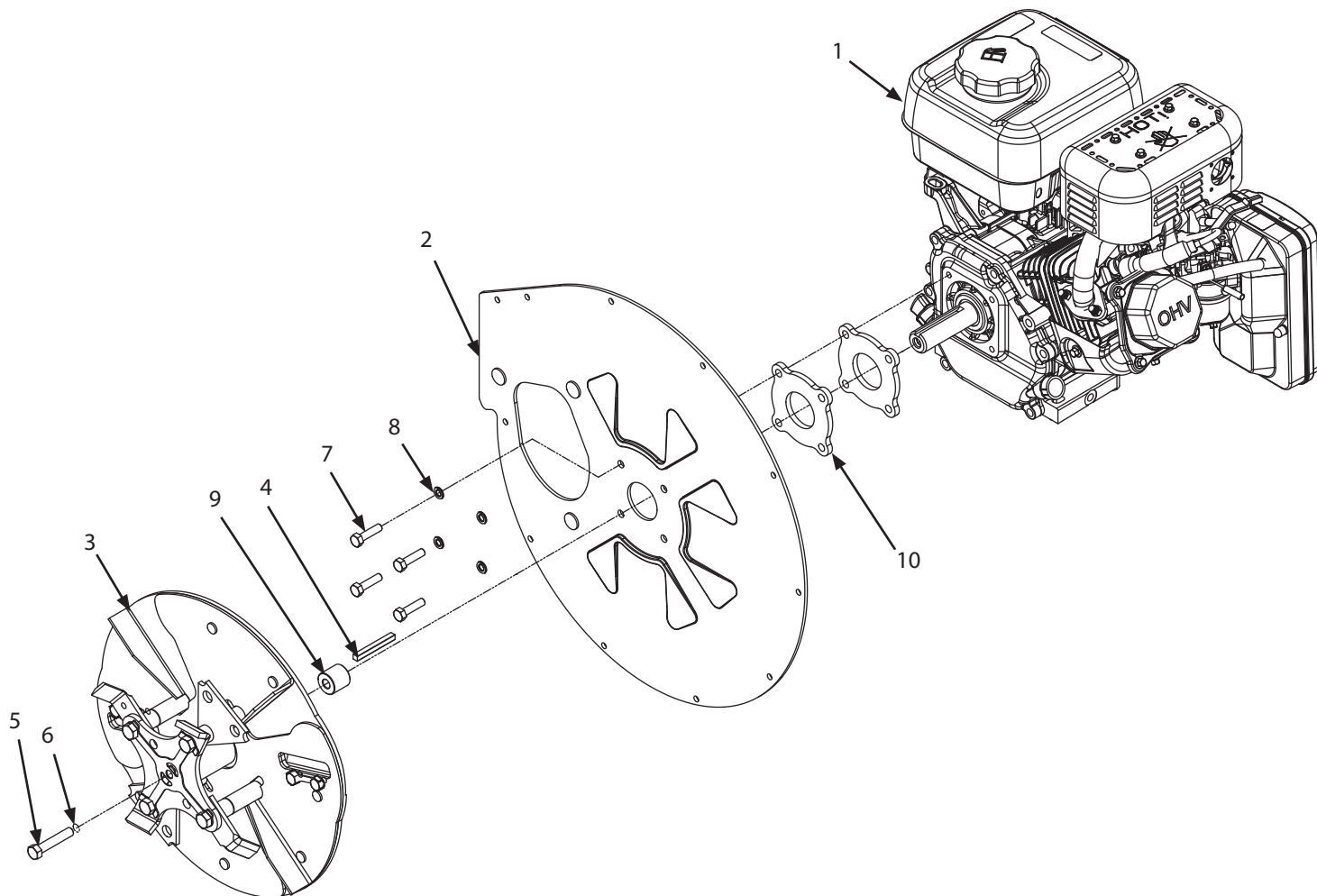


REF. / REP.	PART NO. / N° RÉF.	DESCRIPTION	QTY. / QTÉ
1	50175	WASHER 12MM	2
2	35618	CHIPPER WHEEL 11X 2	2
3	22245	CONE COVER	1
4	35621	WELDMENT CHIPPER CONE	1
5	16400	NUT M8 X 1.25 MM HSF NYLOC GR8.8 ZN	8
6	22097	COTTER PIN 2MM X 50MM	2
7	12770	BOLT M8 X 1.25 X 40 MM GR8.8 ZN	4
8	20143	WASHER M8 X 16 X 1.5 MM FLAT ZN	12
9	35473	KICKSTAND CHIPPER	1
10	W1256V0900	NUT M8 X 1.25 MM HNYLK GR8.8 ZN	8
11	14109	NUT M6 X 1.0 MM HHFNLYK GR8.8 ZN	3
12	20818	BOLT M8 X 1.25 X 16 MM HHSF GR8.8 ZN	4

REF. / REP.	PART NO. / N° RÉF.	DESCRIPTION	QTY. / QTÉ
13	21904	HANDLEBAR CHIPPER	1
14	67089	BOLT M6 X 1.0 X 16 MM HH GR8.8 ZN	7
15	18130	WASHER M6 X 1.5 SPRLK ZN	3
16	1095100	GUARD HOPPER 10.25 X 1.00 X 0.10 BLACK	1
17	35614	FLANGE HOPPER GUARD	1
18	22110	RETAINER HOPPER GUARD	1
19	36860	ROD BAG SUPPORT	1
20	35630	CONNECTOR BAG	1
21	35633	BAG CHIPPER 840MM X 560MM	1
22*	---	CHIPPER ASSEMBLY	---
23	35632	ASSEMBLY BAG CONNECTOR KIT	1

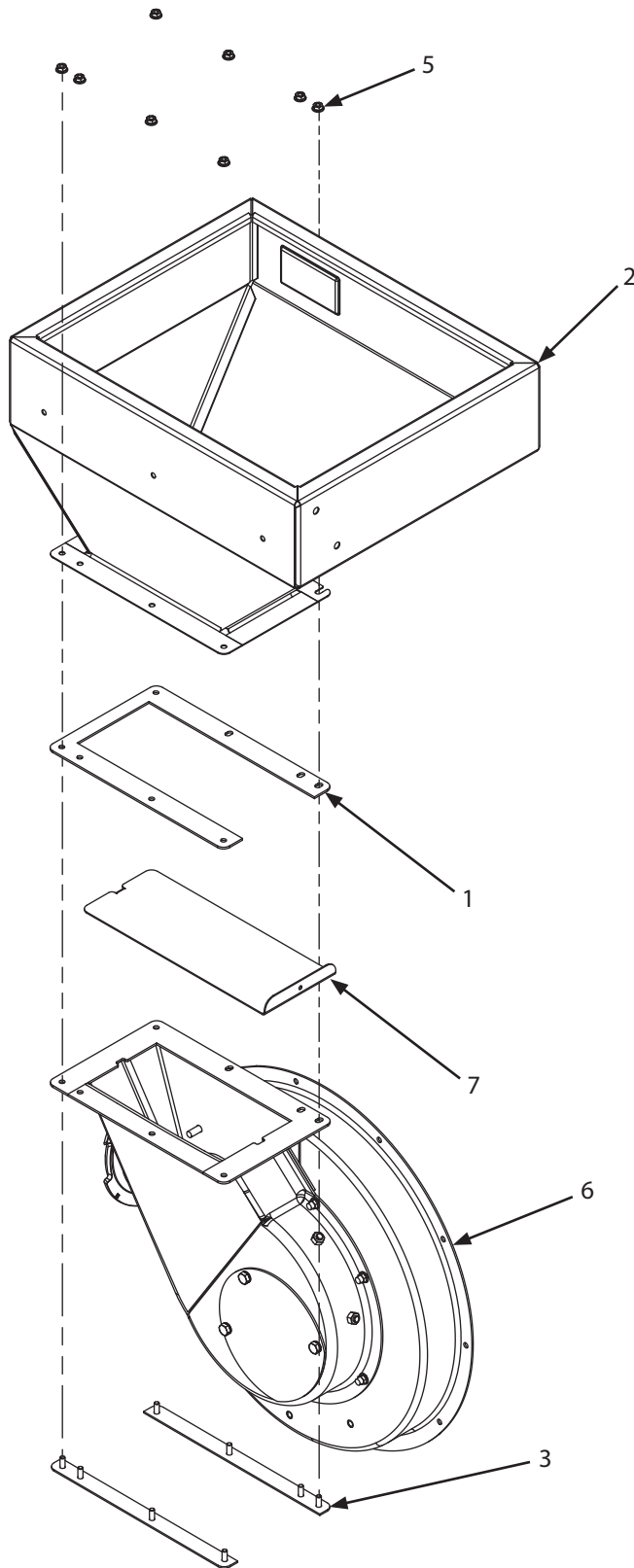
* Item shown for illustrative purposes only.

ILLUSTRATED PARTS BREAKDOWN / ILLUSTRATION DES PIÈCES DÉTACHÉES - Engine and Rotor Assembly



REF. / REP.	PART NO. / N° RÉF.	DESCRIPTION	QTY. / QTÉ
1	24129	ENGINE HRZ 1 IN SHAFT 212CC VPR R210 EPA3	1
2	20838	WELDMENT PLATE ENGINE	1
3	21959	ASSEMBLY ROTOR HAMMERS AND KNIVES METRIC	1
4	905100	KEY 1/4 IN X 1/4 IN X 2-1/4 IN LG	1
5	30608	BOLT 3/8 X 24 X 2 IN HH GR8 FT	1
6	1916965	WASHER LOCK SPRING 3/8 IN	1
7	813	BOLT 5/16-24 X 1-1/4 IN HH GR8 ZN	4
8	21640	WASHER M8 SPRLK ZN	4
9	1713200	SPACER .41 X 1.00 X .95 THK STEEL	1
10	22848	SPACER ENGINE R210	2

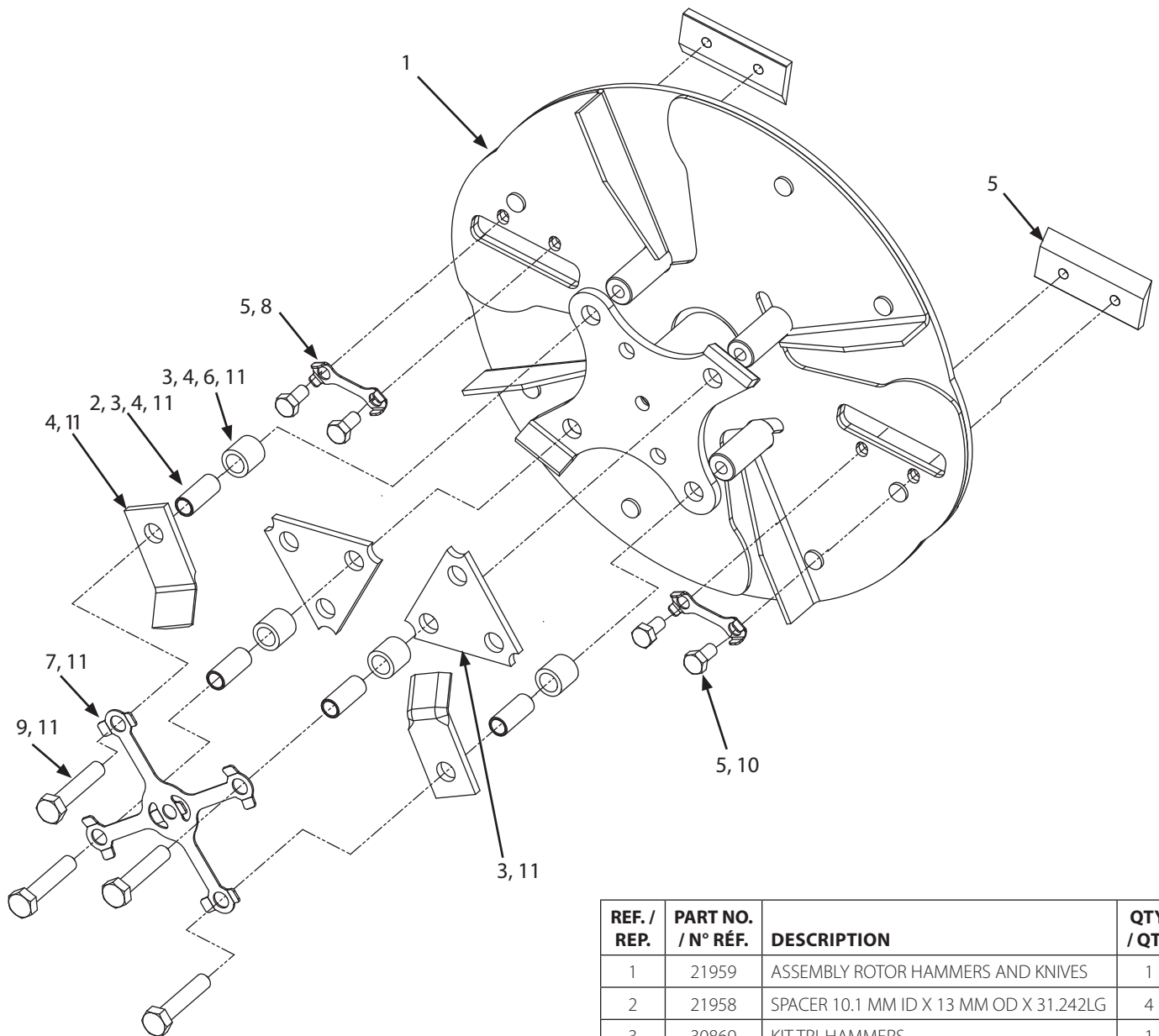
ILLUSTRATED PARTS BREAKDOWN / ILLUSTRATION DES PIÈCES DÉTACHÉES - Hopper Group



REF. / REP.	PART NO. / N° RÉF.	DESCRIPTION	QTY. / QTÉ
1	21937	SHIM	1
2	37270	WELDMENT CHIPPER HOPPER	1
3	27077	STUD PLATE	2
5	14109	NUT M6 X 1.0 MM HFNYLK CL8	8
6*	---	CHIPPER HOUSING GROUP	---
7	21938	DAMPER	1

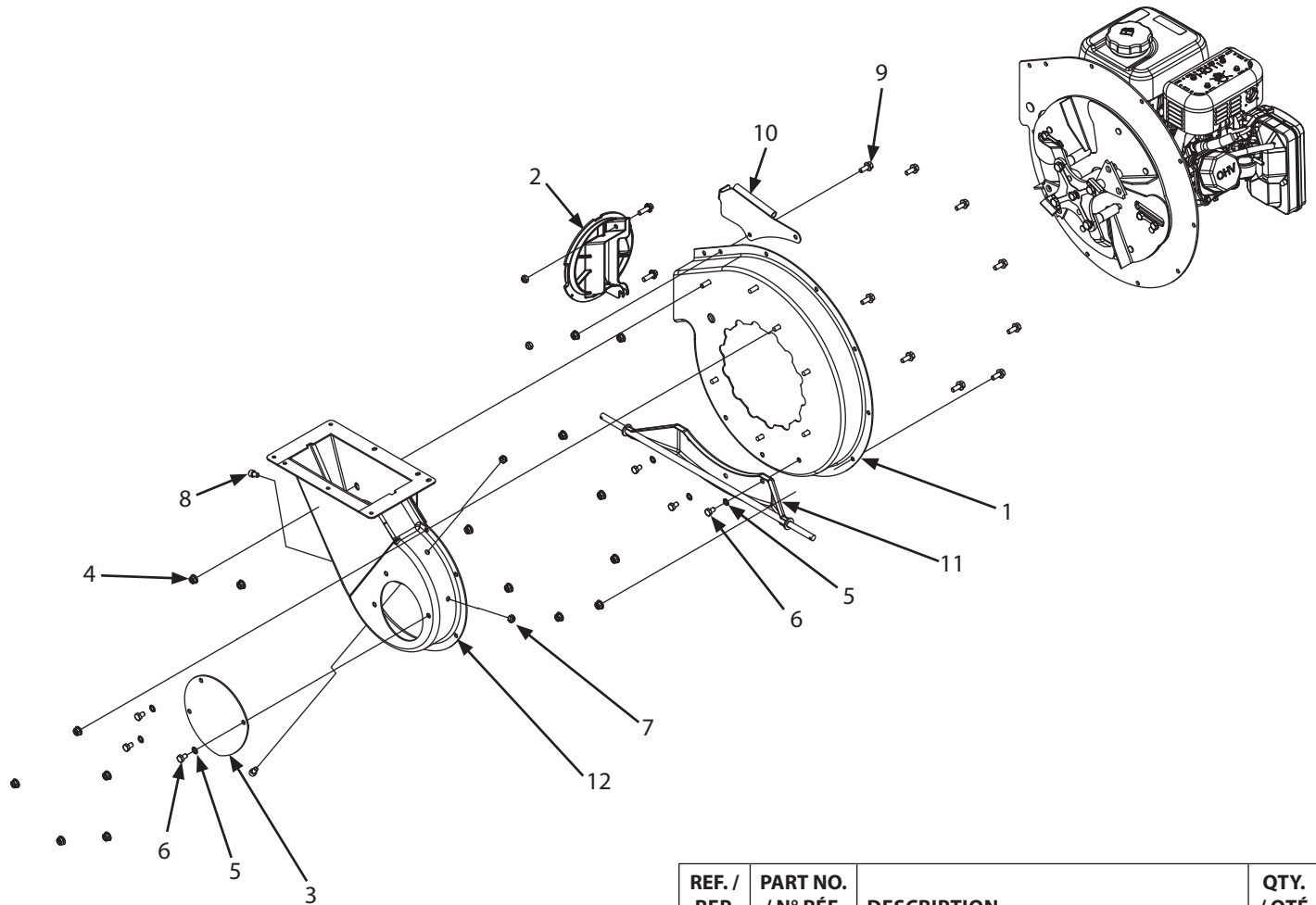
** Item shown for illustrative purposes only.*

ILLUSTRATED PARTS BREAKDOWN / ILLUSTRATION DES PIÈCES DÉTACHÉES - Rotor Group Assembly



REF. / REP.	PART NO. / N° RÉF.	DESCRIPTION	QTY. / QTÉ
1	21959	ASSEMBLY ROTOR HAMMERS AND KNIVES	1
2	21958	SPACER 10.1 MM ID X 13 MM OD X 31.242LG	4
3	30869	KIT TRI-HAMMERS	1
4	30868	KIT J-HAMMERS	1
5	30867	BLADE KIT	2
6	22166	SPACER 13 MM ID X 19 MM OD X 18.745 LG	4
7	30507	PLATE LOCKING ROTOR	1
8	30508	PLATE LOCKING KNIVES	2
9	30583	BOLT M10 X 1.5 X 50 MM HH GR10.9 F-T	4
10	30584	BOLT M8 X 1.25 X 16 MM HH GR10.9 F-T	4
11	30940	KIT ROTOR COMPLETE	1

ILLUSTRATED PARTS BREAKDOWN: Chipper Housing Assembly



REF. / REP.	PART NO. / N° RÉF.	DESCRIPTION	QTY. / QTÉ
1	20812	WELDMENT HOUSING ROTOR	1
2	21936	ASSEMBLY BAG CONNECTOR KIT	1
3	22650	COVER ROTOR HOUSING	1
4	34553	NUT M8	16
5	21640	WASHER M8 SPRING LOCK ZINC	6
6	3241	BOLT M8 X 1.25 X 12 MM HHCS GR8.8 ZN	6
7	W1265V0900	NUT M8 X 1.25 MM HNYLK GR8.8 ZN	2
8	23956	BOLT M8 X 1.25 X 12 MM SHCS GR8.8 ZN F-T	2
9	16880	BOLT M8 X 1.25 X 25 MM SFH GR8.8 ZN F-T	11
10	35636	WELDMENT BAG SUPPORT	1
11	35626	WELDMENT AXLE MOUNT CHIPPER	1
12	19221	WELDMENT CHIPPER BACK COVER	1
13*	---	ENGINE AND ROTOR GROUP	---

* Item shown for illustrative purposes only.





1730 Industrial Avenue
PO Box 666
Cumberland, WI 54829

Phone, Téléphone : (800) 345-6007
Fax, Télécopieur : (715) 822-2124
www.tazzoutdoorproducts.com