

Groundbreaking Power Equipment

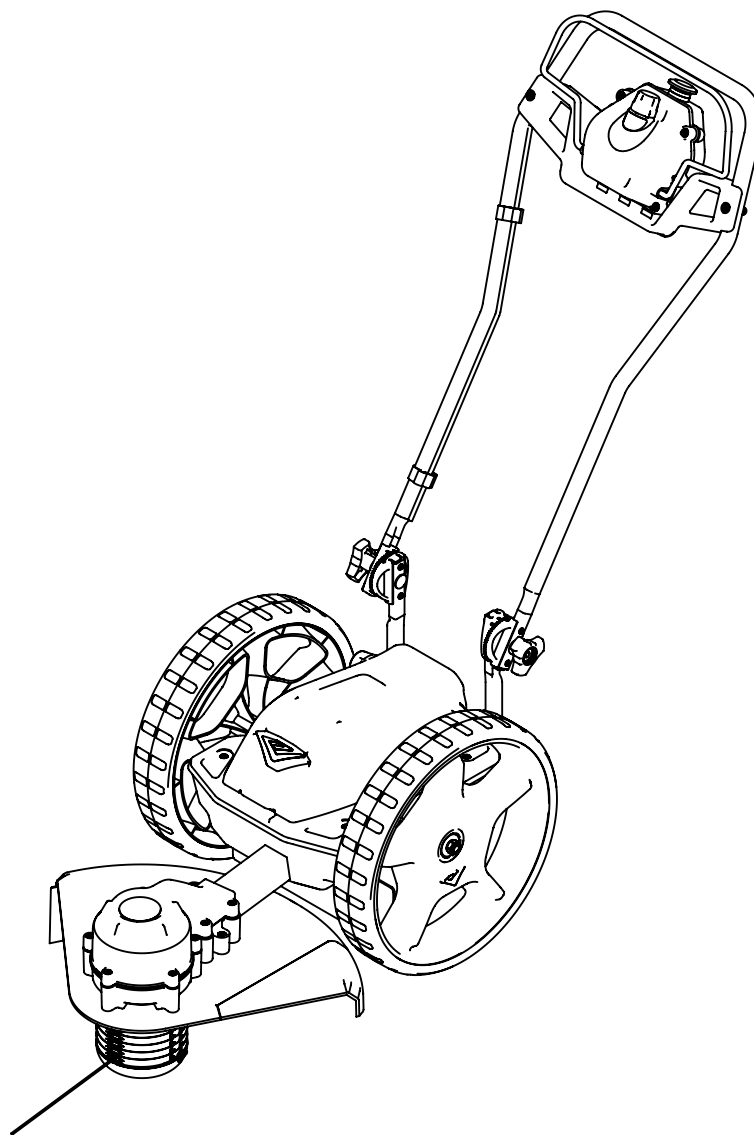
Illustrated Parts Breakdown
Illustration des pièces détachées

**Model Number,
Numéros de modèle :**
44965

ENGLISH

FRANÇAIS

S/N



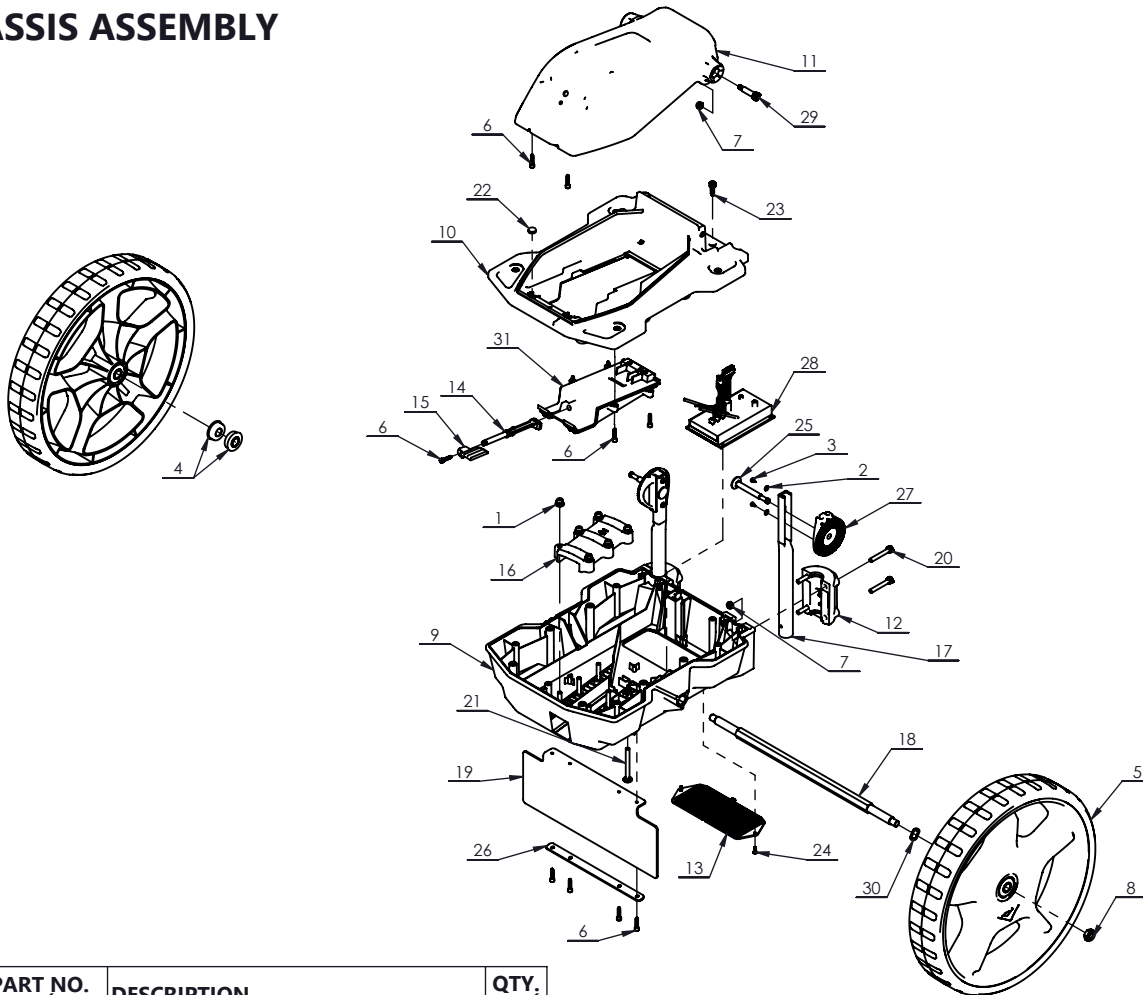
www.getearthquake.com - (800) 345-6007

© 2024 Ardisam, Inc.
All Rights Reserved
Tous droits réservés
P/N: 49473
SVC: SVC05806
ECN: 14297
REV 1: 2024-11-05



THIS INSTRUCTION BOOKLET CONTAINS IMPORTANT SAFETY INFORMATION. PLEASE READ AND KEEP FOR FUTURE REFERENCE.
CE LIVRET D'INSTRUCTIONS CONTIENT DES INFORMATIONS IMPORTANTES SUR LA SÉCURITÉ. VEUILLEZ LE LIRE ET LE CONSERVER POUR TOUTE CONSULTATION EXTÉRIEURE.

CHASSIS ASSEMBLY

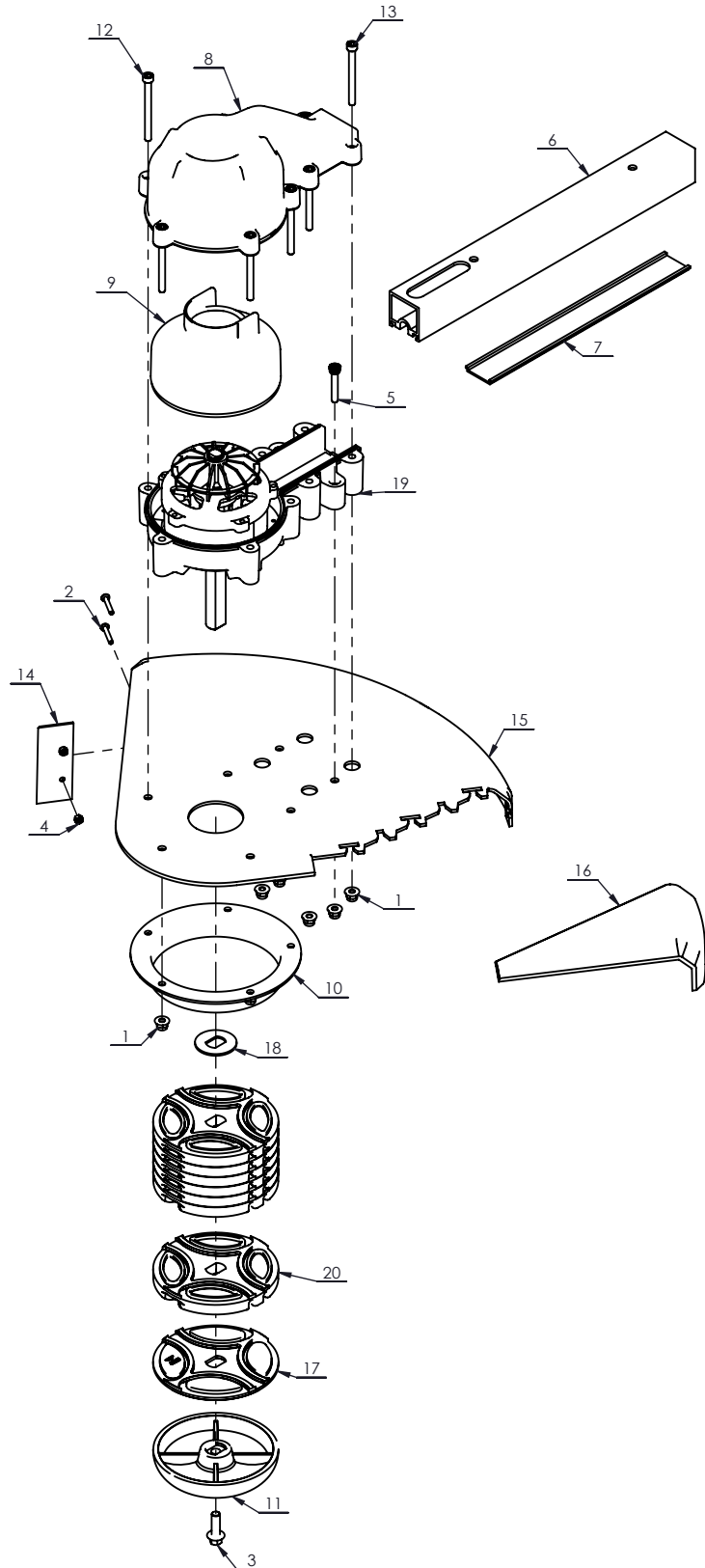


REF./ REP.	PART NO. /° RÉF.	DESCRIPTION	QTY. /QTÉ
1	13599	NUT M6	6
2	16360	WASHER M3	4
3	16397	SCREW M3 X 10	4
4	19984	BEARING	2
5	28321	WHEEL ASSEMBLY W/ BEARINGS	2
6	33974	SCREW 4 X 20MM SELF THREADING	11
7	37433	NUT M6	10
8	41235	NUT M10	2
9	44970	LOWER CHASSIS	1
10	44971	UPPER CHASSIS	1
11	44972	BATTERY COVER	1
12	44973	HANDLEBAR CLAMP	2
13	44974	INTAKE FILTER	1
14	45922	BATTERY LOCK LEVER	1
15	45923	LOCK HANDLE	1
16	45924	CLAMP	1

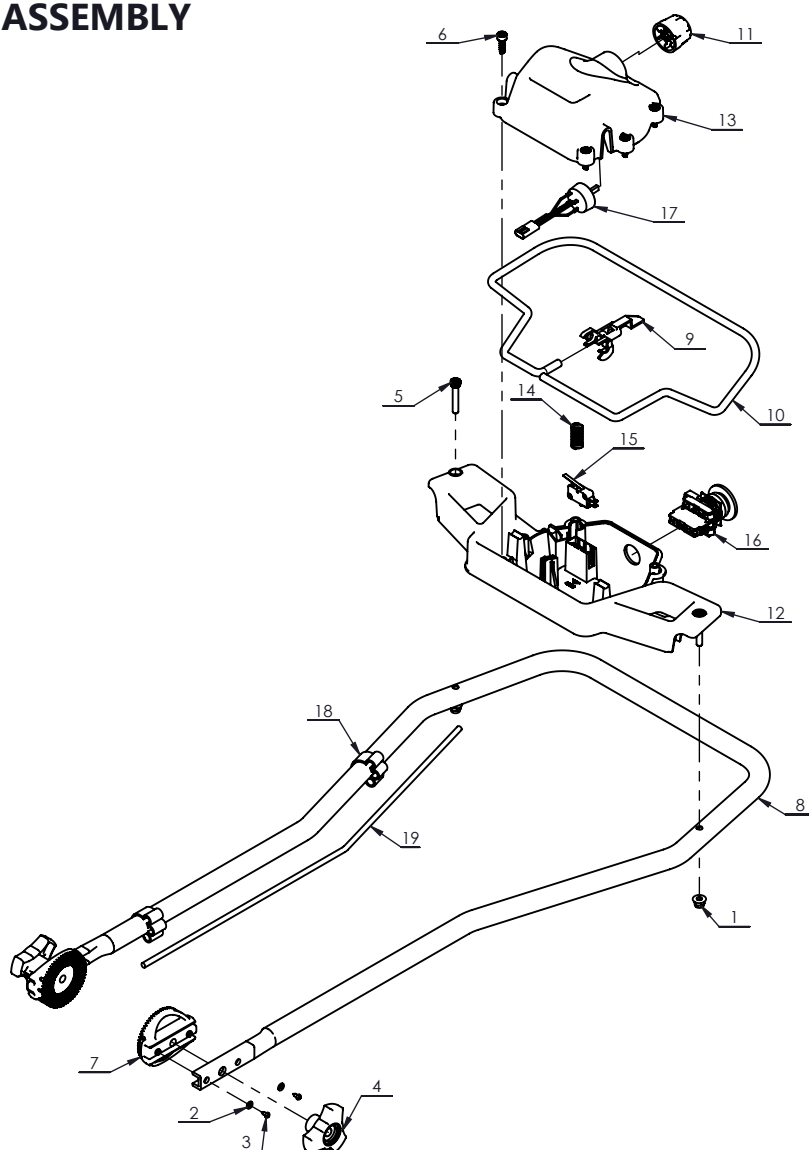
REF./ REP.	PART NO. /° RÉF.	DESCRIPTION	QTY. /QTÉ
17	45925	MOUNT TUBE	2
18	45926	AXLE SHAFT	1
19	45927	FLAP	1
20	45930	BOLT M6 X 40	8
21	45933	BOLT M6 X 60	6
22	45937	MAGNET	2
23	46259	SCREW M6 X 18	7
24	46260	SCREW #6 X 3/8	2
25	46265	BOLT M8 X 65	2
26	46266	HOLD DOWN STRIP	1
27	46267	ANGLE ADJUSTMENT DISC	2
28	46485	MOTOR CONTROLLER	1
29	47149	BOLT M6 X 35	2
30	47277	WAVE WASHER	2
31	49411	BATTERY TRAY	1

HEAD ASSEMBLY

REF./ REP.	PART NO. /° RÉF.	DESCRIPTION	QTY. /QTE
1	13599	NUT M6	11
2	24034	SCREW M4 X 25	2
3	35893	BOLT M8 X 25	1
4	41489	NUT M4 NYLOCK	2
5	45929	BOLT M6 X 35	2
6	45941	HEAD TUBE	1
7	45943	TUBE COVER	1
8	45944	MOTOR OUTER COVER	1
9	45945	MOTOR INNER COVER	1
10	45946	SHAFT WRAP GUARD	1
11	45948	CUTTING HEAD BOTTOM	1
12	45949	BOLT M6 X 70	5
13	45950	BOLT M6 X 65	4
14	45951	LINE CUTTER BLADE	1
15	46325	STRING GUARD	1
16	46326	SNAP ON STRING GUARD	1
17	46355	CUTTING HEAD 1 SIDED PLATE	1
18	46356	HEAD SHAFT WASHER	1
19	46486	ELECTRIC MOTOR	1
20	49494	CUTTING HEAD DISK	7



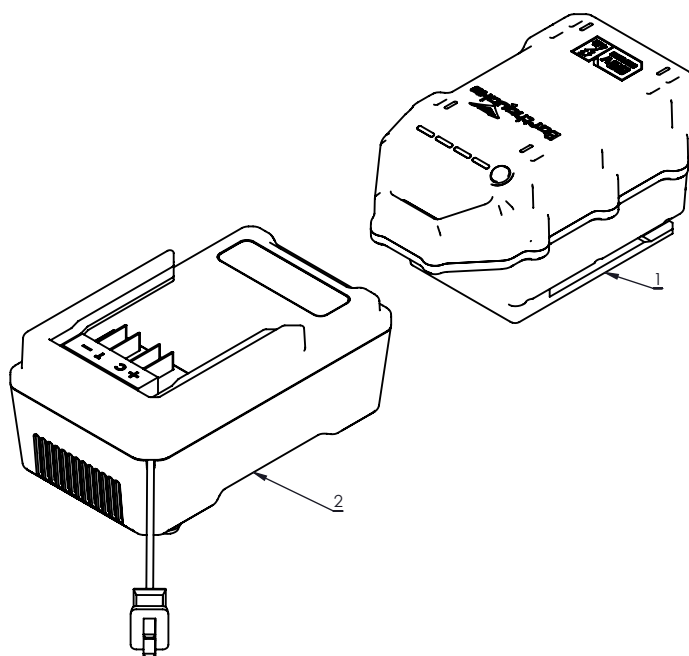
HANDLEBAR ASSEMBLY



REF./ REP.	PART NO. /° RÉF.	DESCRIPTION	QTY. /QTÉ
1	13599	NUT M6	2
2	16360	WASHER M3	4
3	16397	SCREW M3 X 10	4
4	28354	THREE LOBE HAND NUT	2
5	45929	BOLT M6 X 35	2
6	46259	SCREW M6 X 18	6
7	46267	ANGLE ADJUSTMENT DISC	2
8	46276	UPPER HANDLEBAR	1
9	46277	BAIL TRIGGER	1

REF./ REP.	PART NO. /° RÉF.	DESCRIPTION	QTY. /QTÉ
10	46278	BAIL	1
11	46279	SPEED KNOB	1
12	46280	DASH PANEL LOWER	1
13	46281	DASH PANEL UPPER	1
14	46282	SPRING	1
15	46283	SWITCH	1
16	46284	PUSH BUTTON	1
17	47278	SPEED CONTROL DIAL	1
18	47279	CABLE HOLDER	2
19	49440	WIRE HARNESS	1

BATTERY & CHARGER



REF./ REP.	PART NO. /° RÉF.	DESCRIPTION	QTY. /QTÉ
1	47573	BATTERY 60V 4AH	1
2	47578	CHARGER 60V 2AMP	1