

Groundbreaking Power Equipment

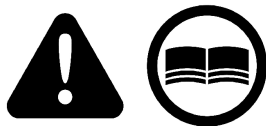
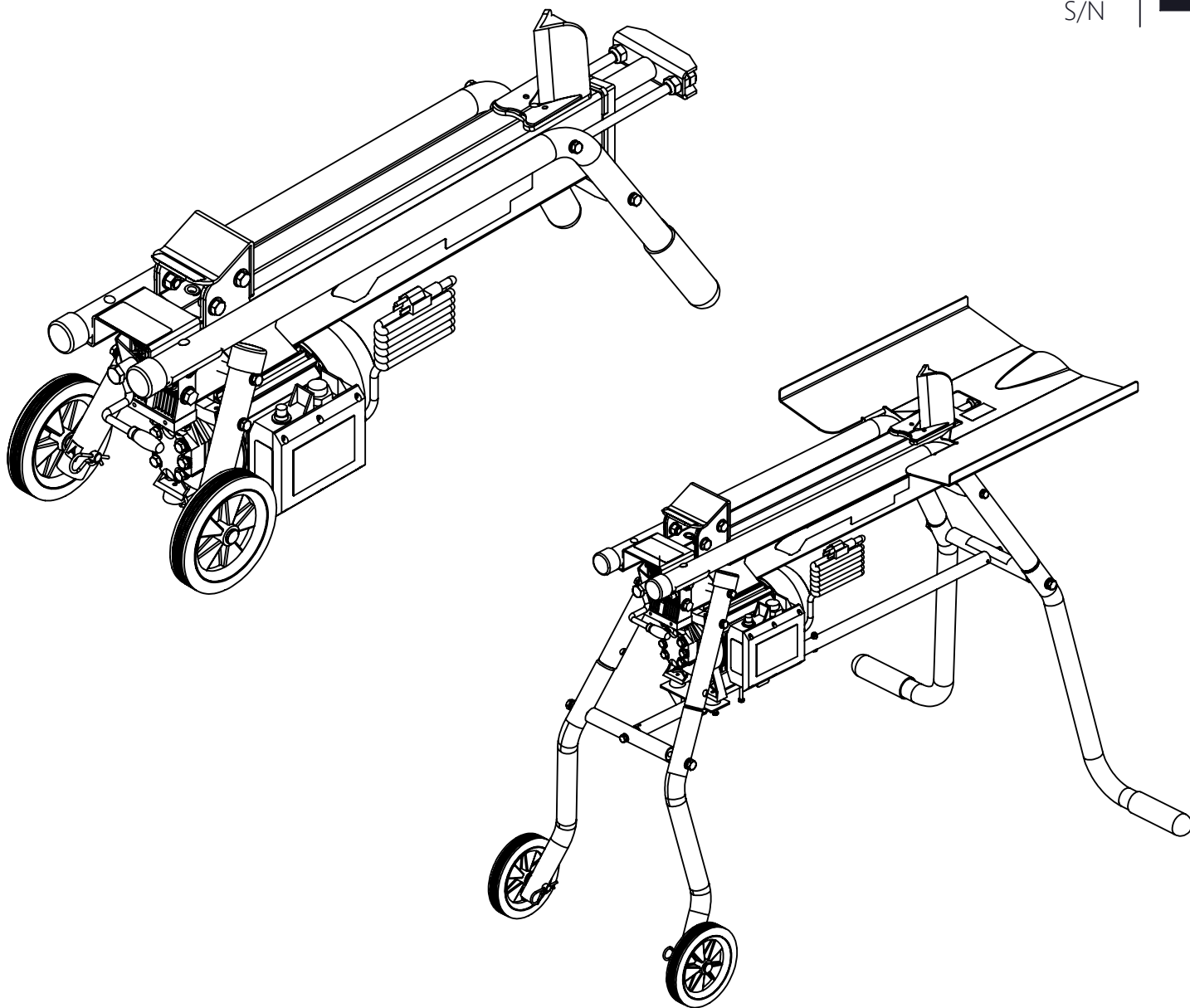
Illustrated Parts Breakdown  
Illustration des pièces détachées

**Model Numbers,  
Numéros de modèle:**  
**43715, 44099**

ENGLISH

FRANÇAIS

S/N



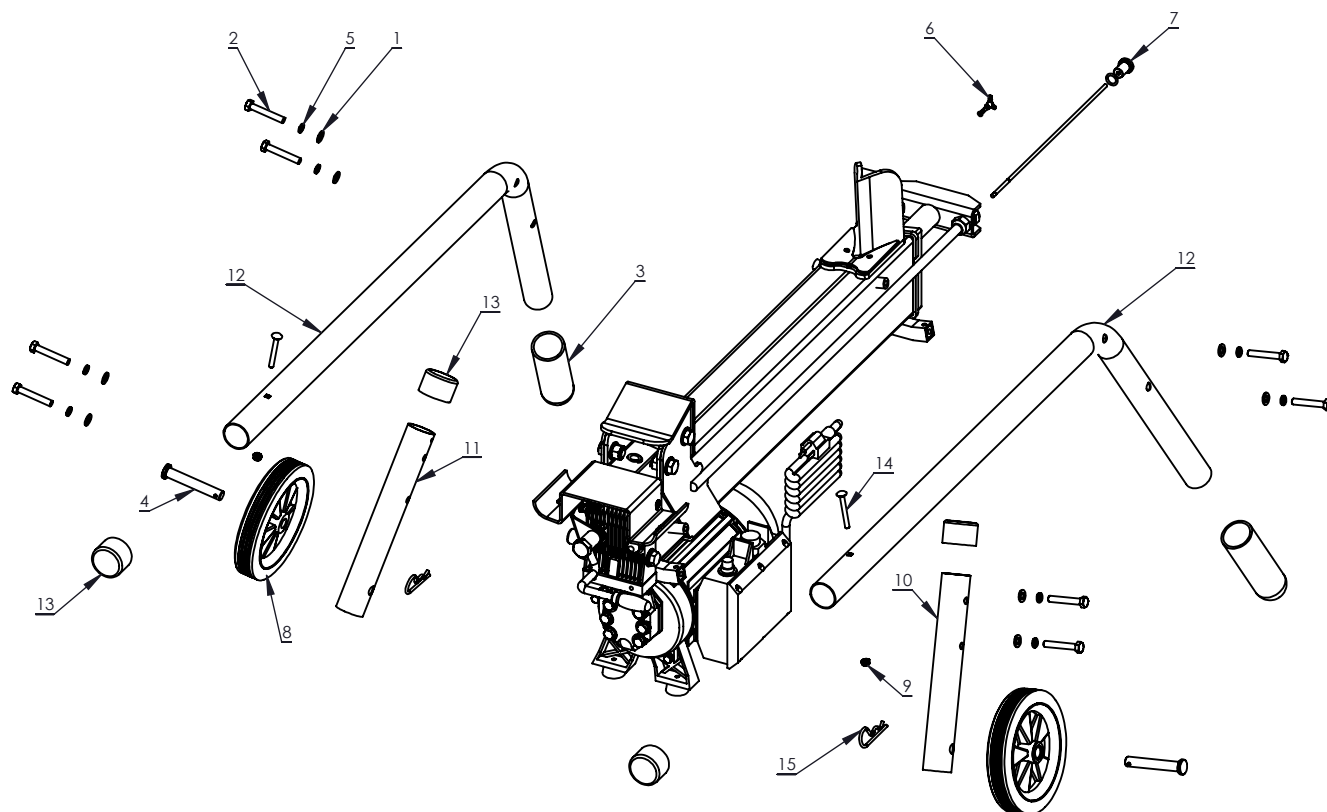
[www.getearthquake.com](http://www.getearthquake.com) - (800) 345-6007

© 2024 Ardisam, Inc.  
All Rights Reserved  
Tous droits réservés  
P/N: 45128  
SVC: 05655, 05768  
ECN: 14769  
REV 4: 2025-01-31



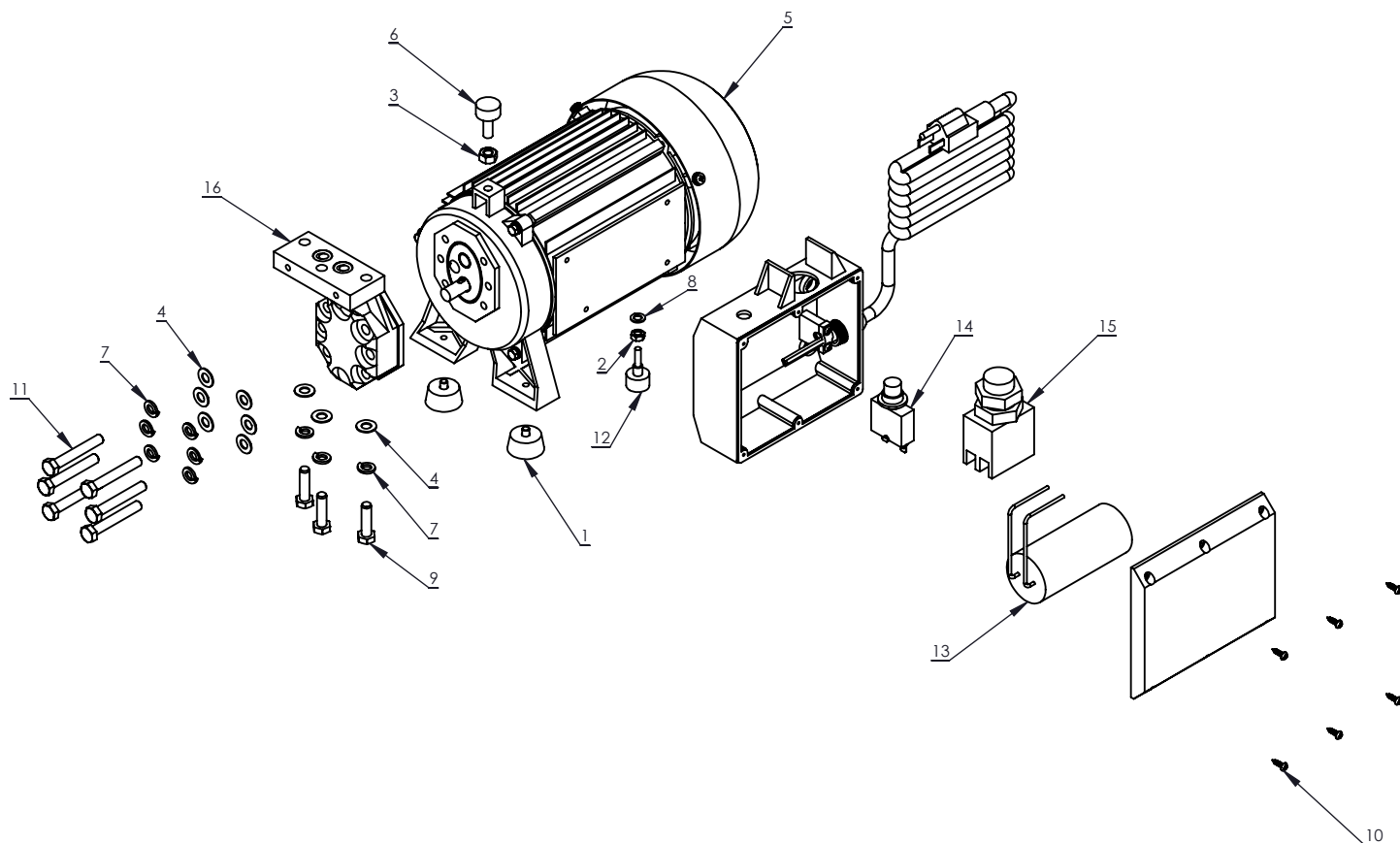
THIS INSTRUCTION BOOKLET CONTAINS IMPORTANT SAFETY INFORMATION. PLEASE READ AND KEEP FOR FUTURE REFERENCE.  
CE LIVRET D'INSTRUCTIONS CONTIENT DES INFORMATIONS IMPORTANTES SUR LA SÉCURITÉ. VEUILLEZ LE LIRE ET LE CONSERVER POUR TOUTE CONSULTATION EXTÉRIEURE.

## 5-TON ELECTRIC LOG SPLITTER BREAKDOWN



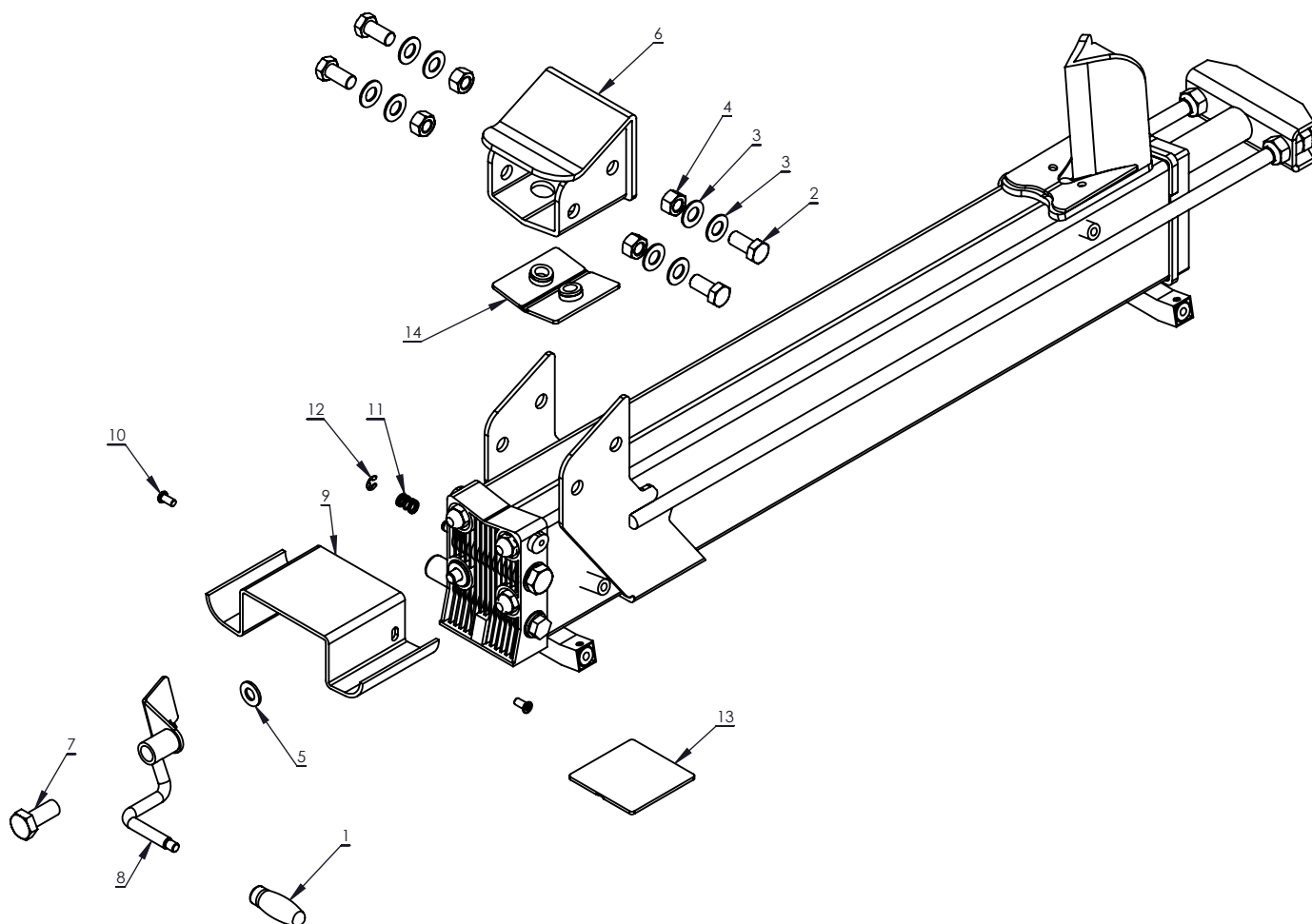
REF./ REP.	PART NO. /° RÉF.	DESCRIPTION	QTY. /QTE
1	20143	WASHER M8	8
2	21718	BOLT M8 X 50	8
3	32530	LEG COVER	2
4	32533	WHEEL AXLE	2
5	32569	LOCK WASHER M8	8
6	33670	BREATHER SCREW	1
7	33672	KIT DIPSTICK	1
8	33697	WHEEL LOG SPLITTER	2
9	37433	NUT M6	2
10	43798	LEG SUPPORT LEFT	1
11	43800	LEG SUPPORT RIGHT	1
12	43801	TUBE CRADLE	2
13	44106	TUBE CAP	4
14	44758	CARRIAGE BOLT M6	2
15	46134	HAIR PIN	2
16	W120050	E-CLIP	1
17	W120049	LEVER SPRING	1

## 5-TON ELECTRIC LOG SPLITTER BREAKDOWN



REF./ REP.	PART NO. /° RÉF.	DESCRIPTION	QTY./QTÉ
1	11691	RUBBER FOOT	2
2	31948	NUT M6	1
3	3252	NUT M8	1
4	33785	WASHER M8	9
5	W120001	MOTOR	1
6	W120003	VIBRATION DAMPENER	1
7	W1200114	LOCK WASHER M8	9
8	W1200117	WASHER M6	1
9	W1200118	BOLT M8 X 30MM	3
10	W1200121	SCREW ST3.5 X 13MM	6
11	W1200130	BOLT M8 X 55MM	6
12	W1200207	FORWARD FOOT	1
13	W1200241	MOTOR CAPACITOR	1
14	W1200243	CIRCUIT BREAKER	1
15	W1200244	PUSH BUTTON SWITCH	1
16	W1200247	HYDRAULIC PUMP KIT	1

## 5-TON ELECTRIC LOG SPLITTER BREAKDOWN



REF./ REP.	PART NO. /° REF.	DESCRIPTION	QTY. /QTE
1	32535	CONTROL LEVER KNOB	1
2	32566	BOLT M12 X 32.5MM	4
3	32567	WASHER M12	8
4	32568	NUT M12	4
5	331036	WASHER M10	1
6	33150	PUSH BLOCK	1
7	33667	BARREL NUT	1
8	43807	CONTROL HANDLE WELDMENT	1
9	44754	SAFETY GUARD	1
10	48412	SCREW M6 X 12 ULP SHCS	2
11	W120049	LEVER SPRING	1
12	W120050	E-CLIP	1
13	W120061A	PUSH BLOCK GLIDE FLAT	1
14	W120061B	PUSH BLOCK GLIDE ANGLED	1