



YARDBIRD®

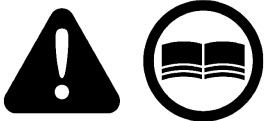
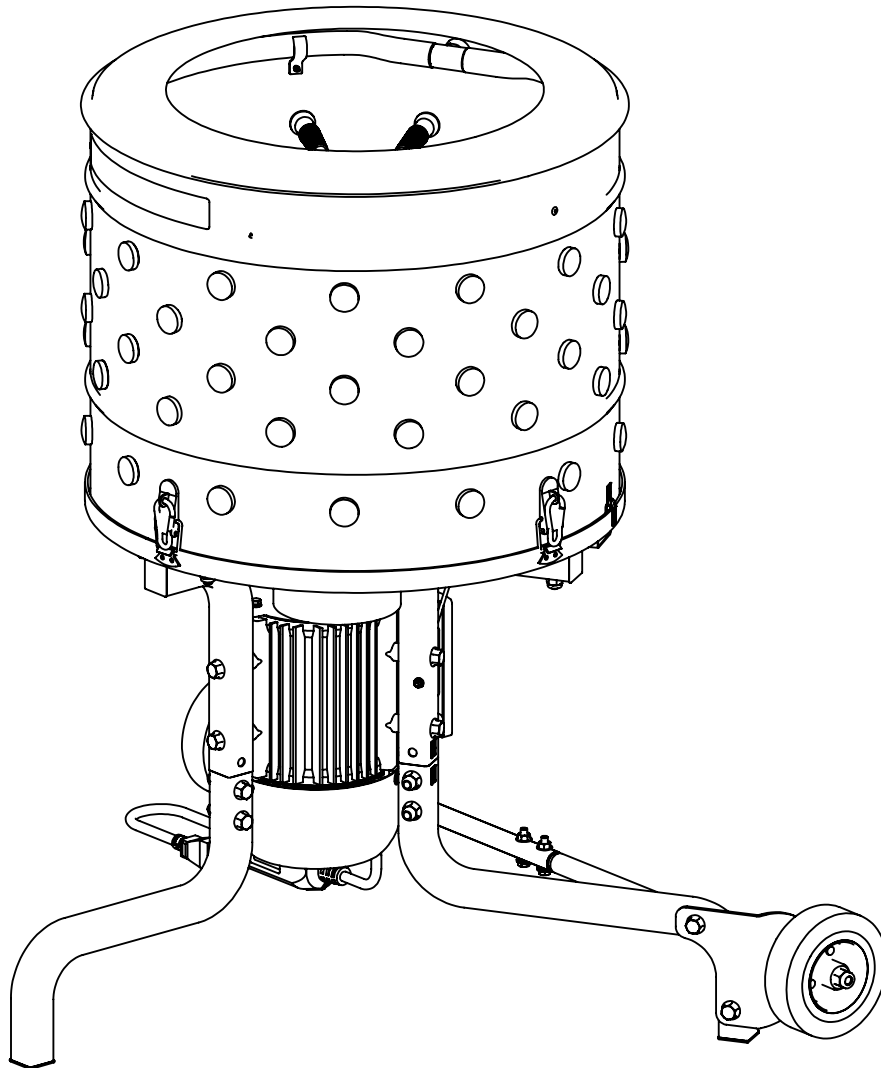
Illustrated Parts Breakdown
Illustration des pièces détachées

**Model Number,
Numéros de modèle :**
21833

ENGLISH

FRANÇAIS

S/N



www.yardbirdpluckers.com - (800) 345-6007

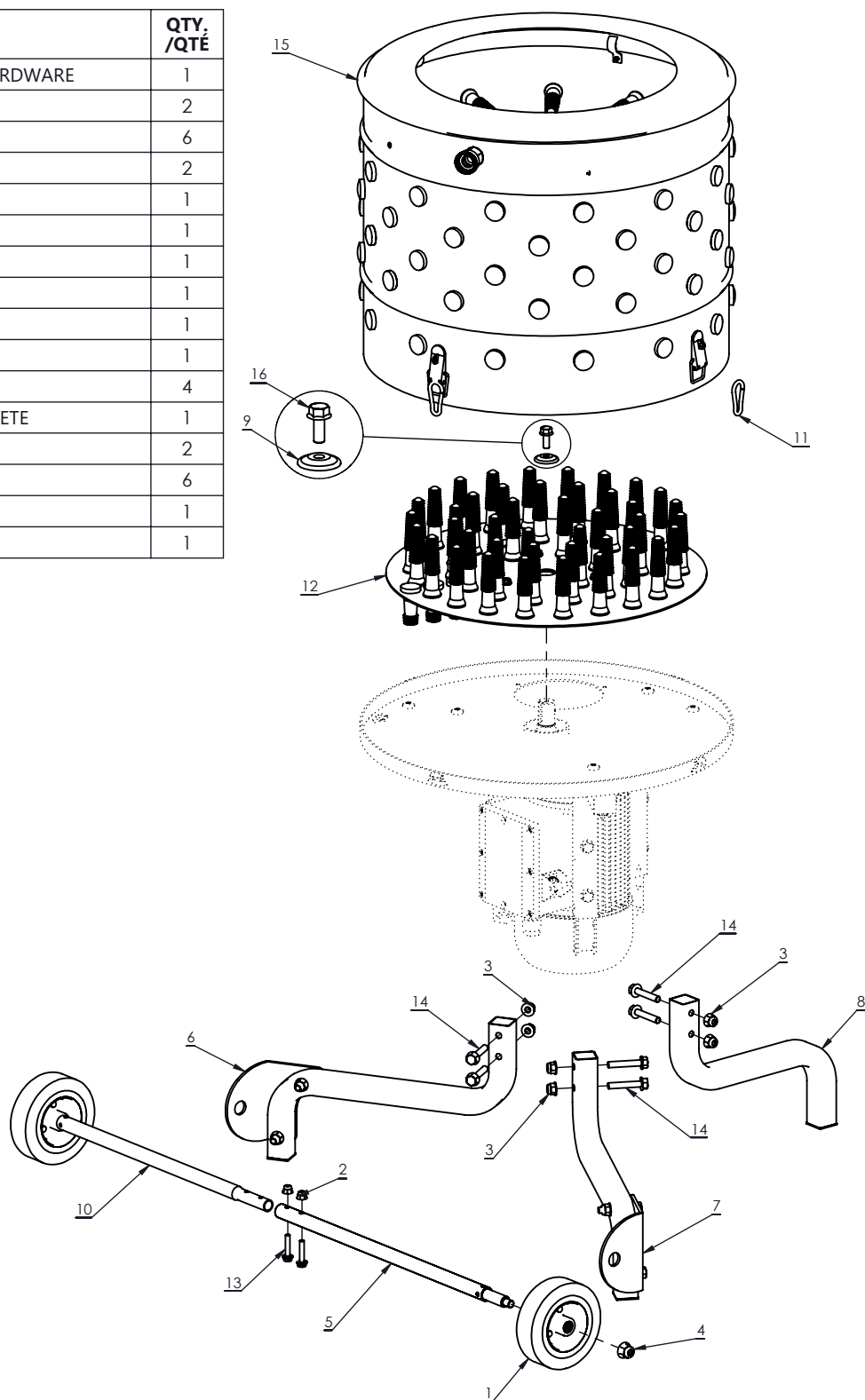
© 2024 Ardisam, Inc.
All Rights Reserved
Tous droits réservés
P/N: 47211
SVC: 05746
ECN: 14448
REV1: 2024-07-11



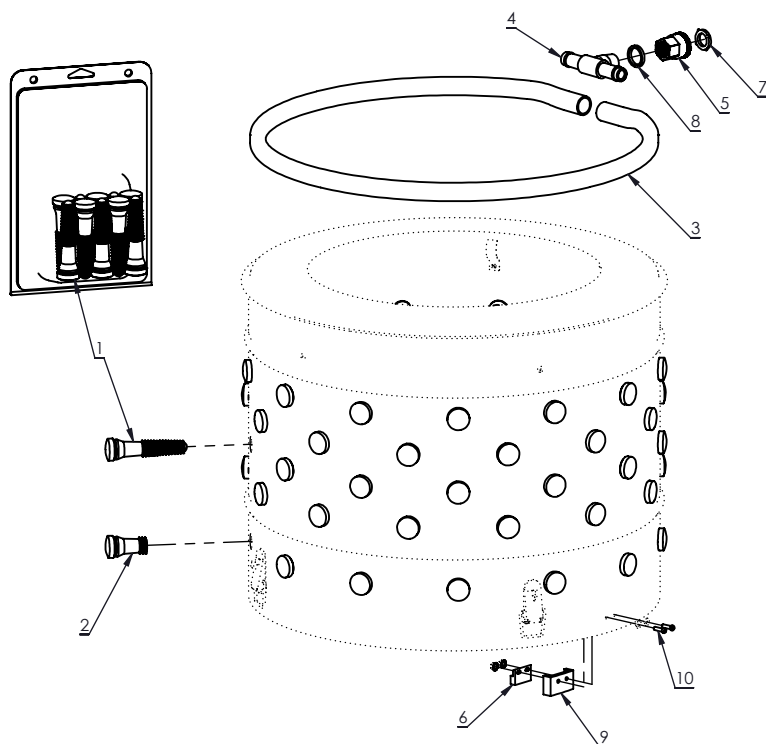
THIS INSTRUCTION BOOKLET CONTAINS IMPORTANT SAFETY INFORMATION. PLEASE READ AND KEEP FOR FUTURE REFERENCE.
CE LIVRET D'INSTRUCTIONS CONTIENT DES INFORMATIONS IMPORTANTES SUR LA SÉCURITÉ. VEUILLEZ LE LIRE ET LE CONSERVER POUR TOUTE CONSULTATION EXTÉRIEURE.

LEGS AND DRIVEN GROUP

REF./ REP.	PART NO. /° RÉF.	DESCRIPTION	QTY. /QTÉ
1	11919	TWO WHEELS WITH HARDWARE	1
2	14109	NUT M6	2
3	16400	NUT M8	6
4	16903	NUT M10	2
5	23795	AXLE FEMALE	1
6	23833	LEFT LEG	1
7	23834	RIGHT LEG	1
8	23836	FRONT LEG	1
9	23840	DOME WASHER M8	1
10	23864	AXLE MALE	1
11	24017	CARABINER	4
12	24675	FEATHER PLATE COMPLETE	1
13	30148	BOLT M6 X 30	2
14	35226	BOLT M8 X 45	6
15	41934	TUB COMPLETE	1
16	47793	BOLT M8 X 20 LH	1

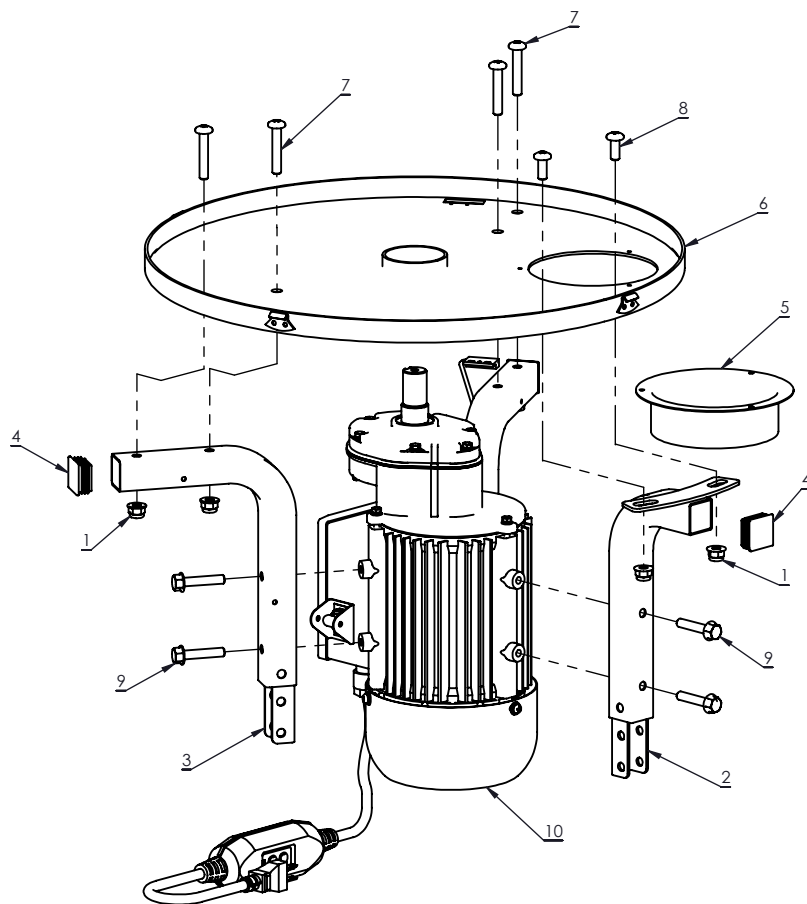


TUB AND MOTOR PLATE GROUPS

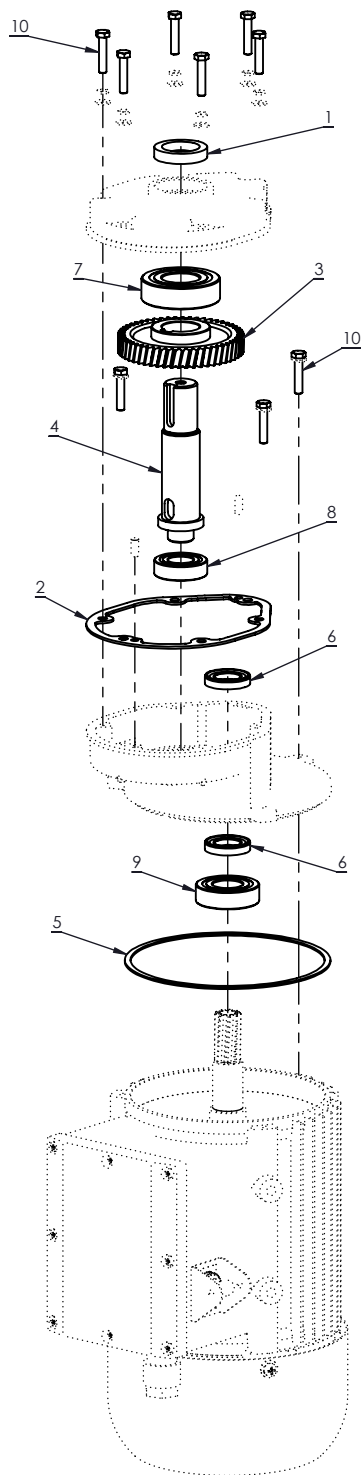


REF./ REP.	PART NO. /° RÉF.	DESCRIPTION	QTY. /QTÉ
1	22575	FINGER REPLACEMENT 10 PACK	52
2	22697	FINGER 40MM	13
3	23632	IRRIGATION RING	1
4	23649	TEE HOSE FITTING	1
5	23844	GARDEN HOSE FITTING	1
6	23846	MAGNET	1
7	23924	GARDEN HOSE GASKET	1
8	23925	RUBBER SPACER	1
9	24082	MAGNET SPACER	1
10	32855	BOLT M4 X 14	2

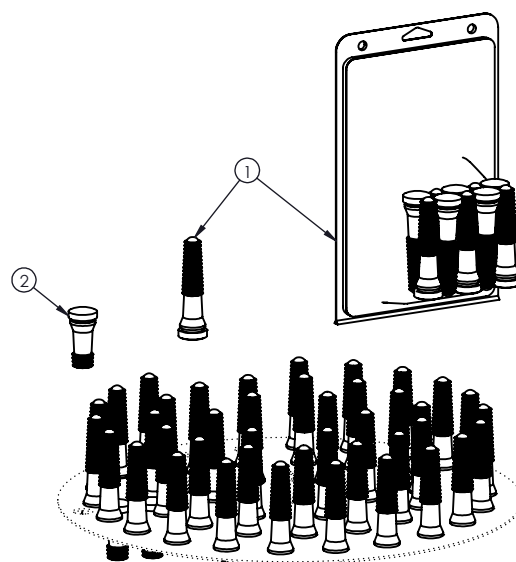
REF./ REP.	PART NO. /° RÉF.	DESCRIPTION	QTY. /QTÉ
1	16400	NUT M8	6
2	23089	SUPPORT LEG FRONT	1
3	23104	SUPPORT LEG REAR	2
4	23636	30MM SQUARE TUBE PLUG	3
5	23637	FEATHER CHUTE	1
6	23638	FEATHER PAN	1
7	24032	BOLT M8 X 45	4
8	24033	BOLT M8 X 20	2
9	37705	BOLT M8 X 40	6
10	45115	MOTOR ASSY COMPLETE	1



GEARBOX AND FEATHER PLATE GROUPS

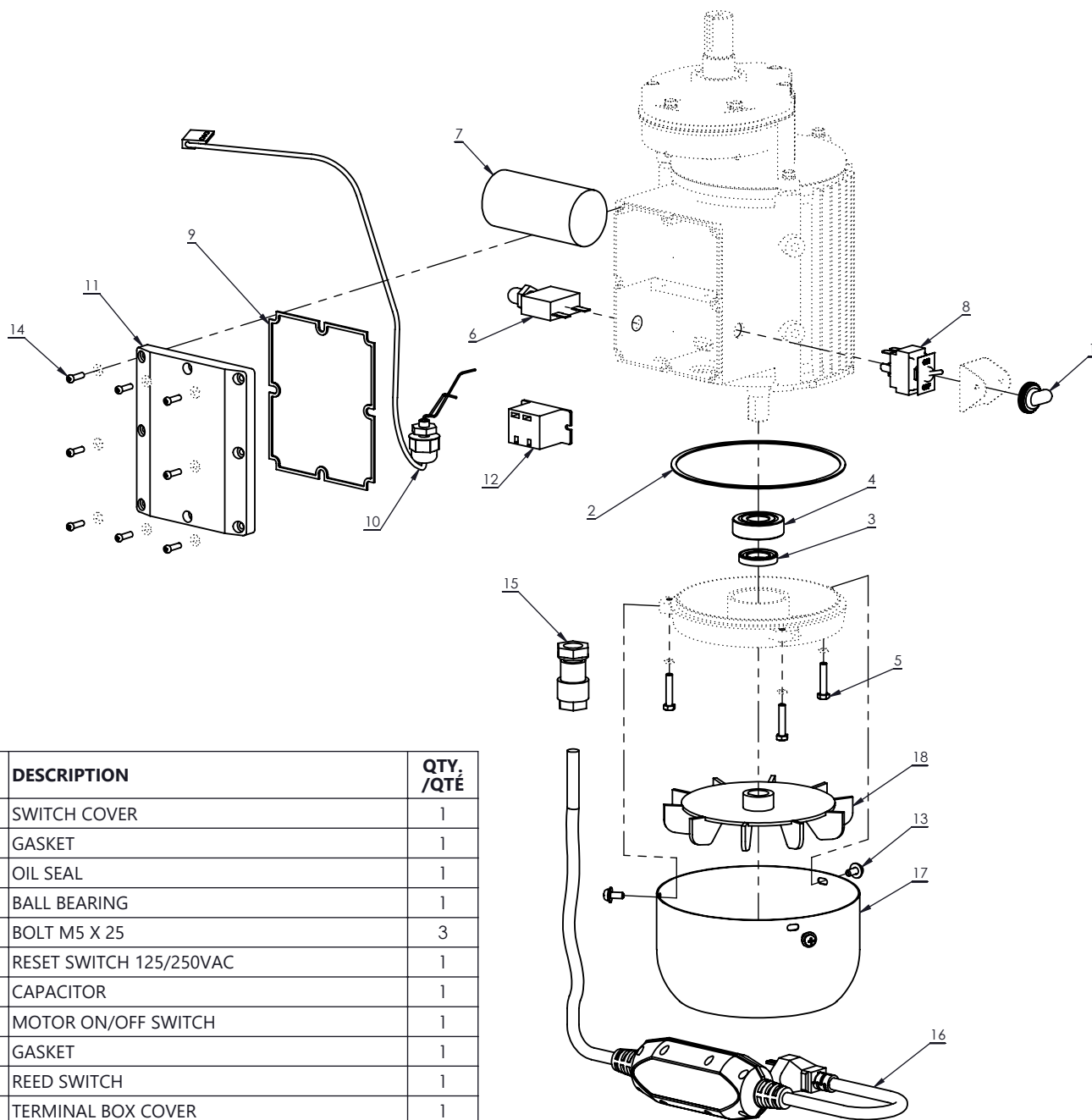


REF./ REP.	PART NO. /° RÉF.	DESCRIPTION	QTY. /QTÉ
1	23115	OIL SEAL	1
2	23117	GASKET	1
3	23118	53T STEEL GEAR	1
4	23119	OUTPUT SHAFT	1
5	23121	GASKET	1
6	23122	OIL SEAL	2
7	23128	BALL BEARING	1
8	23129	BALL BEARING	1
9	23130	BALL BEARING	1
10	24007	BOLT M5 X 25	9



REF./ REP.	PART NO. /° RÉF.	DESCRIPTION	QTY. /QTÉ
1	22575	FINGER REPLACEMENT 10 PACK	43
2	25897	FINGER 56 MM	3

MOTOR GROUP



REF./ REP.	PART NO. /° RÉF.	DESCRIPTION	QTY. /QTÉ
1	10929	SWITCH COVER	1
2	23121	GASKET	1
3	23122	OIL SEAL	1
4	23131	BALL BEARING	1
5	24007	BOLT M5 X 25	3
6	24008	RESET SWITCH 125/250VAC	1
7	24009	CAPACITOR	1
8	24010	MOTOR ON/OFF SWITCH	1
9	24012	GASKET	1
10	24014	REED SWITCH	1
11	24015	TERMINAL BOX COVER	1
12	24076	30 AMP RELAY	1
13	3250	BOLT M5 X 12	3
14	32855	BOLT M4 X 14	8
15	32962	STRAIN RELIEF CONDUIT	1
16	45106	POWER CORD AND GFCI	1
17	W1200202	FAN SHROUD	1
18	W1200236	1200W MOTOR FAN	1