

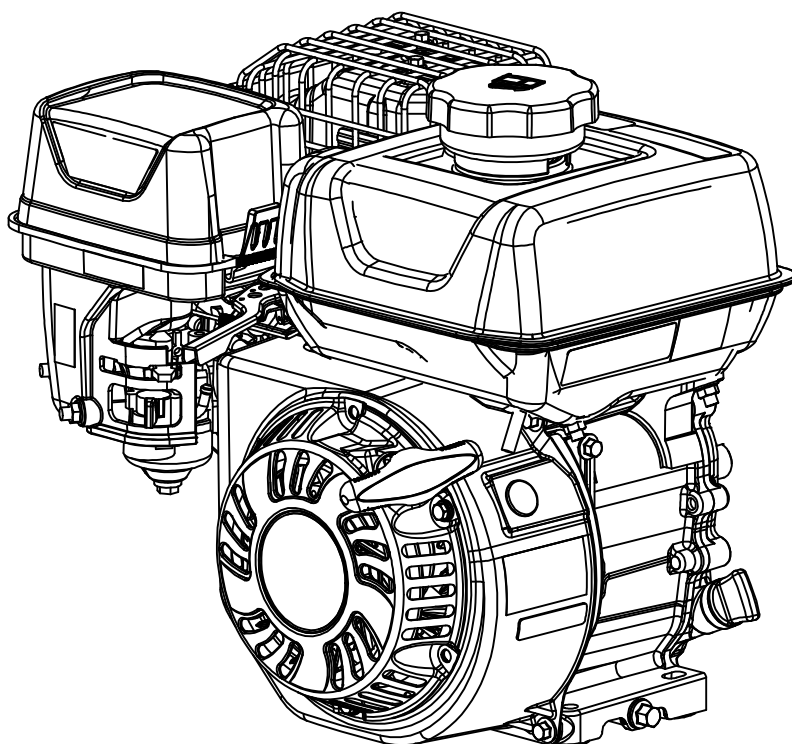
**VIPER<sup>®</sup>**  
ENGINES

Illustrated Parts Breakdown  
Illustration des pièces détachées  
209cc 4-Stroke Viper Engine

**Model Number,  
Numéros de modèle :**  
**39570**

ENGLISH

FRANÇAIS

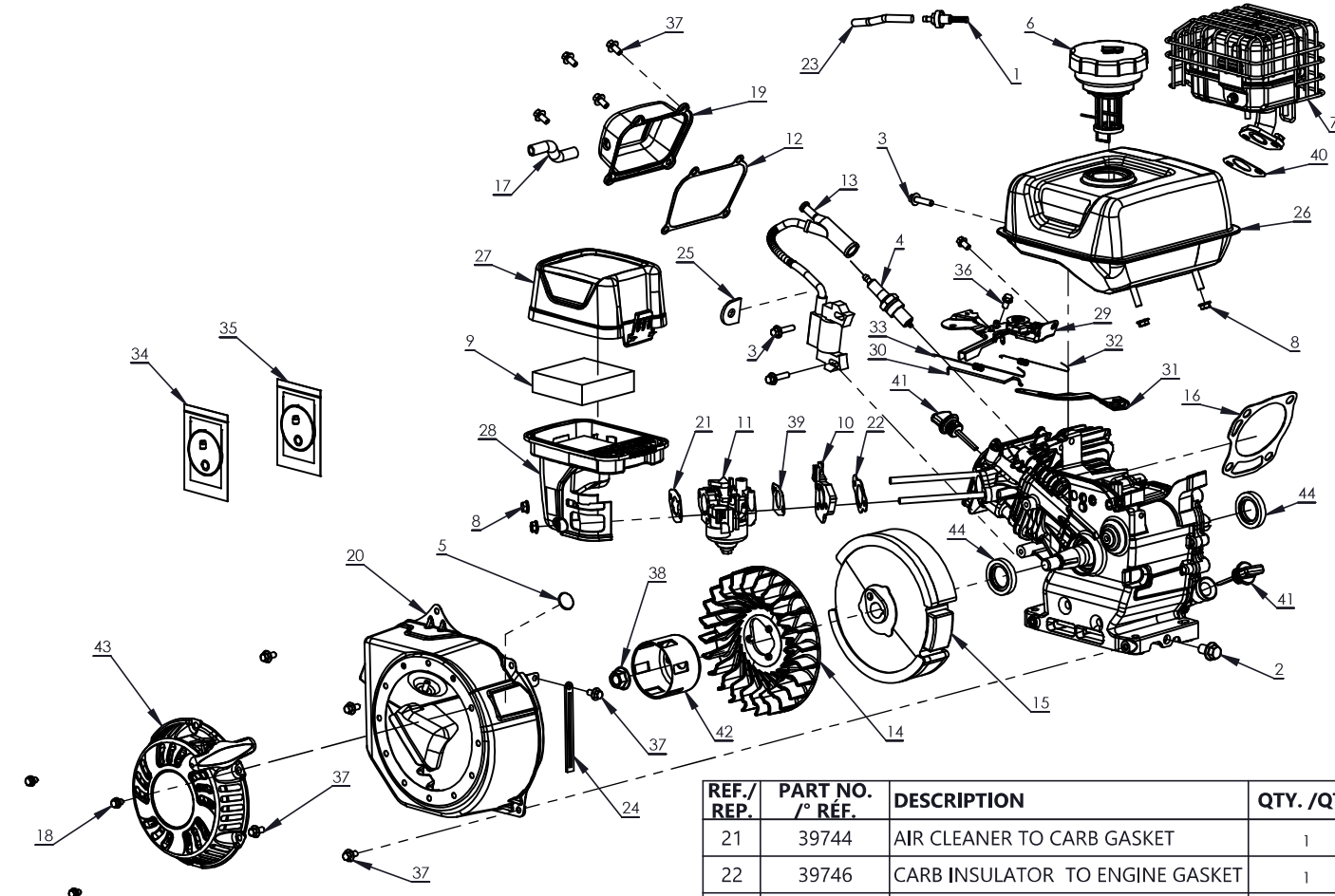


[www.ardisam.com](http://www.ardisam.com) - (800) 345-6007

© 2025 Ardisam, Inc.  
All Rights Reserved  
Tous droits réservés  
P/N: 39691  
SVC: SVC05833  
ECN: 14812  
REV 4: 2025-05-21



THIS INSTRUCTION BOOKLET CONTAINS IMPORTANT SAFETY INFORMATION. PLEASE READ AND KEEP FOR FUTURE REFERENCE.  
CE LIVRET D'INSTRUCTIONS CONTIENT DES INFORMATIONS IMPORTANTES SUR LA SÉCURITÉ. VEUILLEZ LE LIRE ET LE CONSERVER POUR TOUTE CONSULTATION EXTÉRIEURE.



REF./ REP.	PART NO. /° RÉF.	DESCRIPTION	QTY. /QTÉ
1	10106	FUEL FILTER	1
2	10119	OIL DRAIN PLUG ASSEMBLY	2
3	13600	BOLT M6 X 25	3
4	14929	SPARK PLUG F6RTC	1
5	19603	PLUG RUBBER HOLE	1
6	25568	FUEL TANK CAP KIT	1
7	31777	MUFFLER KIT	1
8	35749	NUT M6	4
9	38919	FOAM AIR FILTER ELEMENT	1
10	38921	CARBURETOR INSULATOR	1
11	38922	CARBURETOR ASSY	1
12	38923	VALVE COVER GASKET	1
13	38924	IGNITION COIL ASSY	1
14	38926	IMPELLER	1
15	38927	FLYWHEEL	1
16	38930	HEAD GASKET	1
17	38934	BREATHER HOSE	1
18	38935	BOLT M6 X 8	3
19	39207	VALVE COVER	1
20	39242	BLOWER HOUSING	1

REF./ REP.	PART NO. /° RÉF.	DESCRIPTION	QTY. /QTÉ
21	39744	AIR CLEANER TO CARB GASKET	1
22	39746	CARB INSULATOR TO ENGINE GASKET	1
23	39749	8 OD X 85 MM LONG FUEL LINE	1
24	39752	CABLE TIE BOLT ON	1
25	39753	ISOLATOR SPARK PLUG LEAD	1
26	40756	FUEL TANK VIPER 209CC WITH DECALS	1
27	40759	AIR FILTER TOP COVER	1
28	40760	AIR FILTER BOTTOM COVER	1
29	41676	THROTTLE CONTROL	1
30	41678	GOVERNOR ROD LINKAGE	1
31	41679	GOVERNOR ARM	1
32	41687	FINE REGULATING SPRING	1
33	41688	SPRING THROTTLE VALVE RETURN	1
34	44714	ALTITUDE KIT 3000-6000FT	1
35	44715	ALTITUDE KIT 6000-8000 FT	1
36	6263	BOLT M6 X 10 MM	2
37	6272	BOLT M6 X 12	10
38	6274	NUT M12	1
39	64307	GASKET CARBURETOR INNER	1
40	67027	GASKET EXHAUST	1
41	67038	DIPSTICK WITH O-RING	2
42	67062	RECOIL CUP	1
43	67178	RECOIL	1
44	913329	OIL SEAL	2