

WHAT IS MY SERIES NUMBER OR MODEL YEAR?

Table of Contents

ESKIMO

Engine Products (After 2011) Page 1
Engine Products (Before 2011) Page 2
Non-Engine Products (Shelters) Page 2

ION

Electric Products Page 3

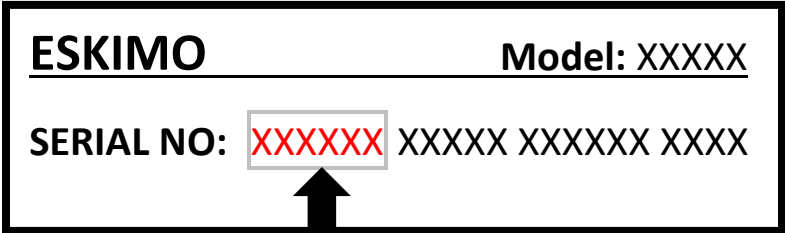
YARDBIRD

Chicken Plucker Page 4



ENGINE PRODUCTS (AFTER 2011)

The **Series Number** is the first six digits of your engine product’s twenty-one digit serial number (if your unit is newer than 2011). Please see an example Serial/Model Number decal below:



Series Number

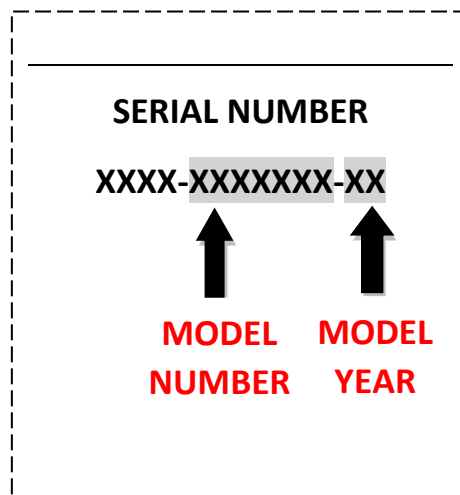
ENGINE PRODUCTS (BEFORE 2011)

Engine products prior to 2011 do not have a Series Number. They are identified by Model Year. The Model Year is represented by the Date of Manufacture located on the engine block of the unit. Please see example below of an engine block decal:



NON-ENGINE PRODUCTS

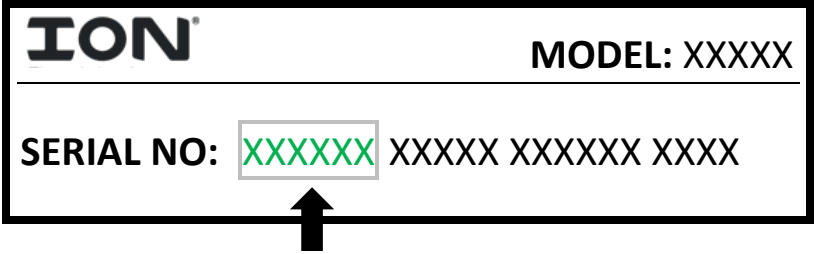
Non-engine products, such as ice shelters, do not have Series Numbers. They are identified by Model Year. The Model Year and Model Number are printed on the ID tag located on the inside of the shelter (sewn into a window or wall seam). Please see example below:



ION[®]

Electric Ice Augers

The **Series Number** is the first six digits of your serial number. The *Serial Number* is a twenty-one digit product identification code that is either located on the bottom of the powerhead and/or inside the battery cradle on the unit.



Series Number

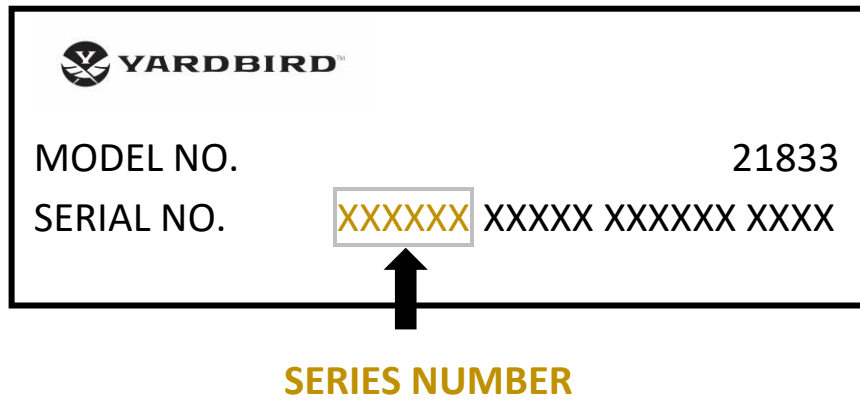
Examples of Serial Number decal(s)





The **Series Number** is the first six digits of your serial number. The *Serial Number* is a twenty-one digit product identification code that is located on the motor assembly of the Chicken Plucker.

Example of Serial Number Decal:



Serial Number Decal

